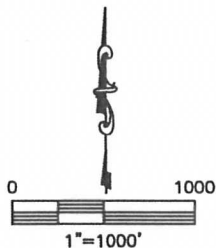
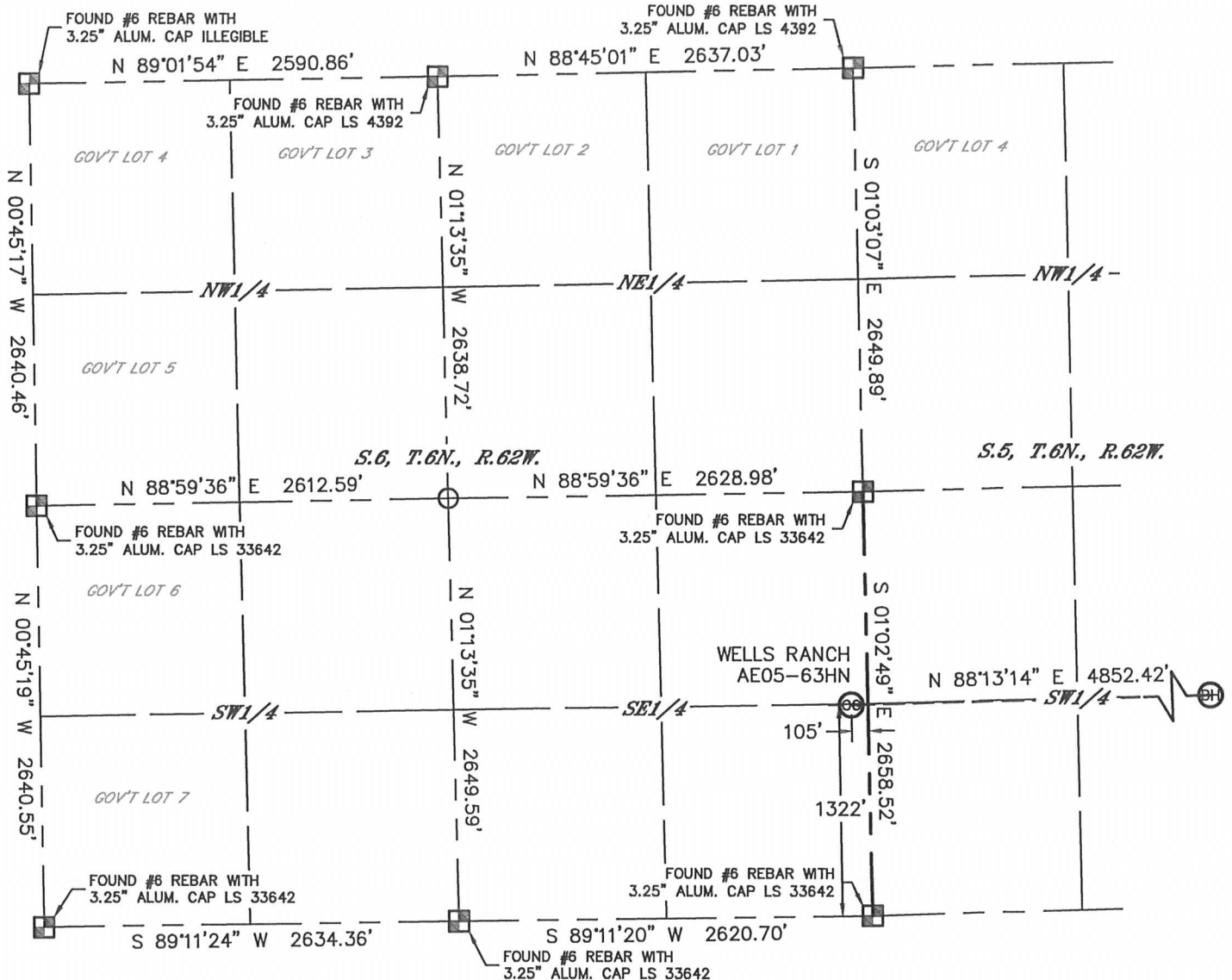


# WELL LOCATION CERTIFICATE

THIS MAP DOES NOT REPRESENT A BOUNDARY SURVEY

SECTION: 6  
TOWNSHIP: 6N  
RANGE: 62W



In accordance with a request from Matt Verbit with Noble Energy Inc. Lat40°, Inc. has determined the surface location of the WELLS RANCH AE05-63HN to be 1322' from the SOUTH line and 105' from the EAST line as measured at right angles from the section lines of Section 6, Township 6 North, Range 62 West and the bottom hole to be 1320' from the SOUTH line and 535' from the EAST line as measured at right angles from the section lines of Section 5, Township 6 North, Range 62 West of the Sixth Principal Meridian, County of Weld, State of Colorado.

I hereby state that this Well Location Certificate was prepared by me, or under my direct supervision, that the fieldwork was completed on 7/13/2012, for and on behalf of Noble Energy Inc. That this is not a Land Survey Plat or an Improvement Survey Plat, and that it is not to be relied upon for establishment of fence, building, or other future improvement lines.



**NOTE:**

- 1) Bearings shown are Grid Bearings of the Colorado State Plane Coordinate System, North Zone, North American Datum 1983/2007. The lineal dimensions as contained herein are based upon the "U.S. Survey Foot."
- 2) Ground elevations are based on an observed GPS elevation (NAVD 1988 DATUM).
- 3) NEAREST EXISTING WELL: NONE WITHIN SECTION
- 4) IMPROVEMENTS: See LOCATION DRAWING for all visible Improvements within 400' of disturbed area.
- 5) SURFACE USE: RANGELAND/EXISTING PAD
- 6) INSTRUMENT OPERATOR: WYATT HALL

**NOTE**

According to Colorado law, you must commence any legal action based upon any defect in this W.L.C. within three years after you discover such defect. In no event, may any action based upon any defect in this survey be commenced more than ten years after the date of the certificate shown hereon. (13-80-105 C.R.S.)

**LEGEND**

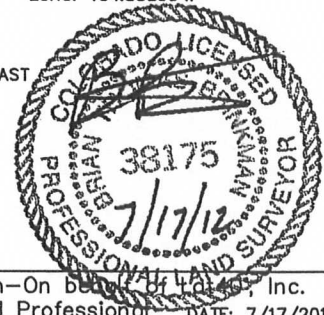
-  = ALIQUOT MONUMENT AS DESCRIBED
-  = CALCULATED POSITION

**SURFACE LOCATION**

LAT: 40.51205°N  
LONG: 104.35634°W  
PDOP: 1.3  
ELEV: 4945'  
1/4,1/4: SE1/4SE1/4  
NEAREST PROPERTY LINE: 105' EAST

**BOTTOM HOLE**

LAT: 40.51229°N  
LONG: 104.33890°W



**SHEET 1 OF 2**

Brian T. Brinkman-On behalf of Lat40°, Inc.

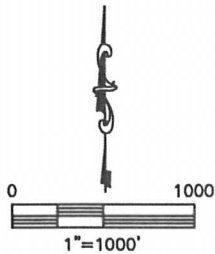
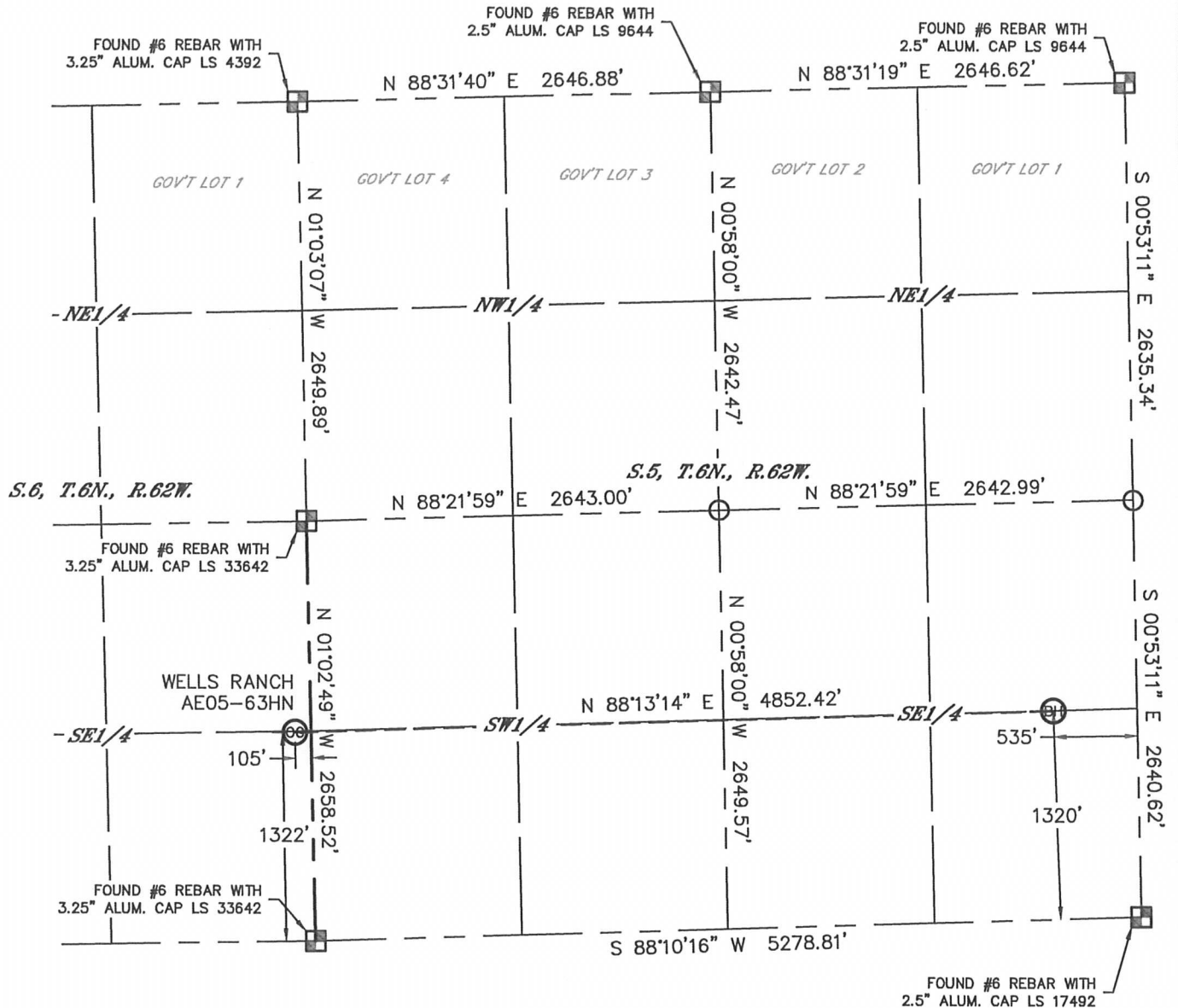
Colorado Licensed Professional  
Land Surveyor No. 38175

DATE: 7/17/2012  
PROJECT#: 2012094

# WELL LOCATION CERTIFICATE

THIS MAP DOES NOT REPRESENT A BOUNDARY SURVEY

SECTION: 6  
TOWNSHIP: 6N  
RANGE: 62W



**NOTE**  
According to Colorado law, you must commence any legal action based upon any defect in this W.L.C. within three years after you discover such defect. In no event, may any action based upon any defect in this survey be commenced more than ten years after the date of the certificate shown hereon. (13-80-105 C.R.S.)

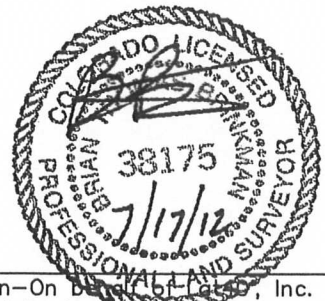
**LEGEND**  
 = ALIQUOT MONUMENT AS DESCRIBED  
 = CALCULATED POSITION

**SHEET 2 OF 2**

Brian T. Brinkman—On behalf of Lat40°, Inc.

Colorado Licensed Professional  
Land Surveyor No. 38175

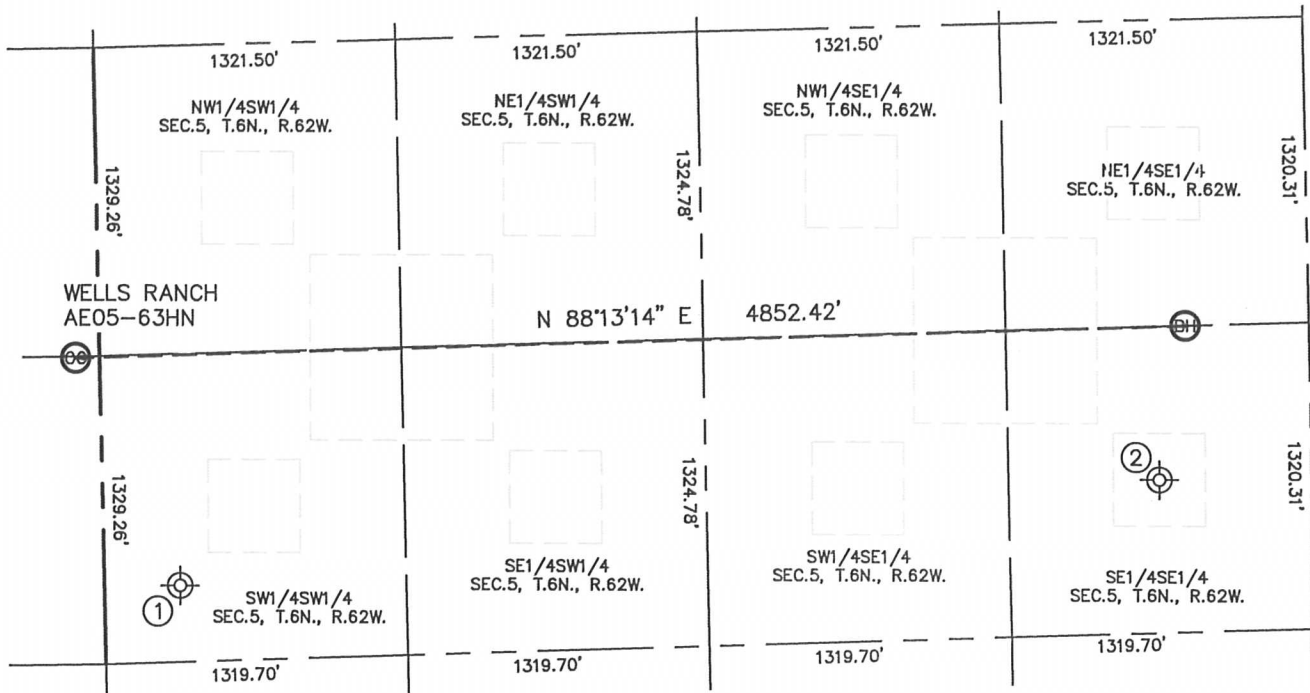
DATE: 7/17/2012  
PROJECT#: 2012094



# SITE SKETCH

## WELLS RANCH AE05-63HN

SECTION: 6  
TOWNSHIP: 6N  
RANGE: 62W



①

FRED RODES 1  
(Drilled & Abandoned)  
SW1/4SW1/4  
330' FSL (COGCC)  
330' FWL (COGCC)  
LAT-40.509225°N (COGCC)  
LONG-104.354729°W (COGCC)  
PDOP: N/A  
ELEV: 4953' (COGCC)

②

ROEDER 1  
(Plugged & Abandoned)  
SE1/4SE1/4  
660' FSL (COGCC)  
660' FEL (COGCC)  
LAT-40.509975°N (COGCC)  
LONG-104.339459°W (COGCC)  
PDOP: N/A  
ELEV: 4891' (COGCC)

