



Lat40°, Inc. 1635 Foxtrail Drive, Suite 325 Loveland, CO 970-776-3321

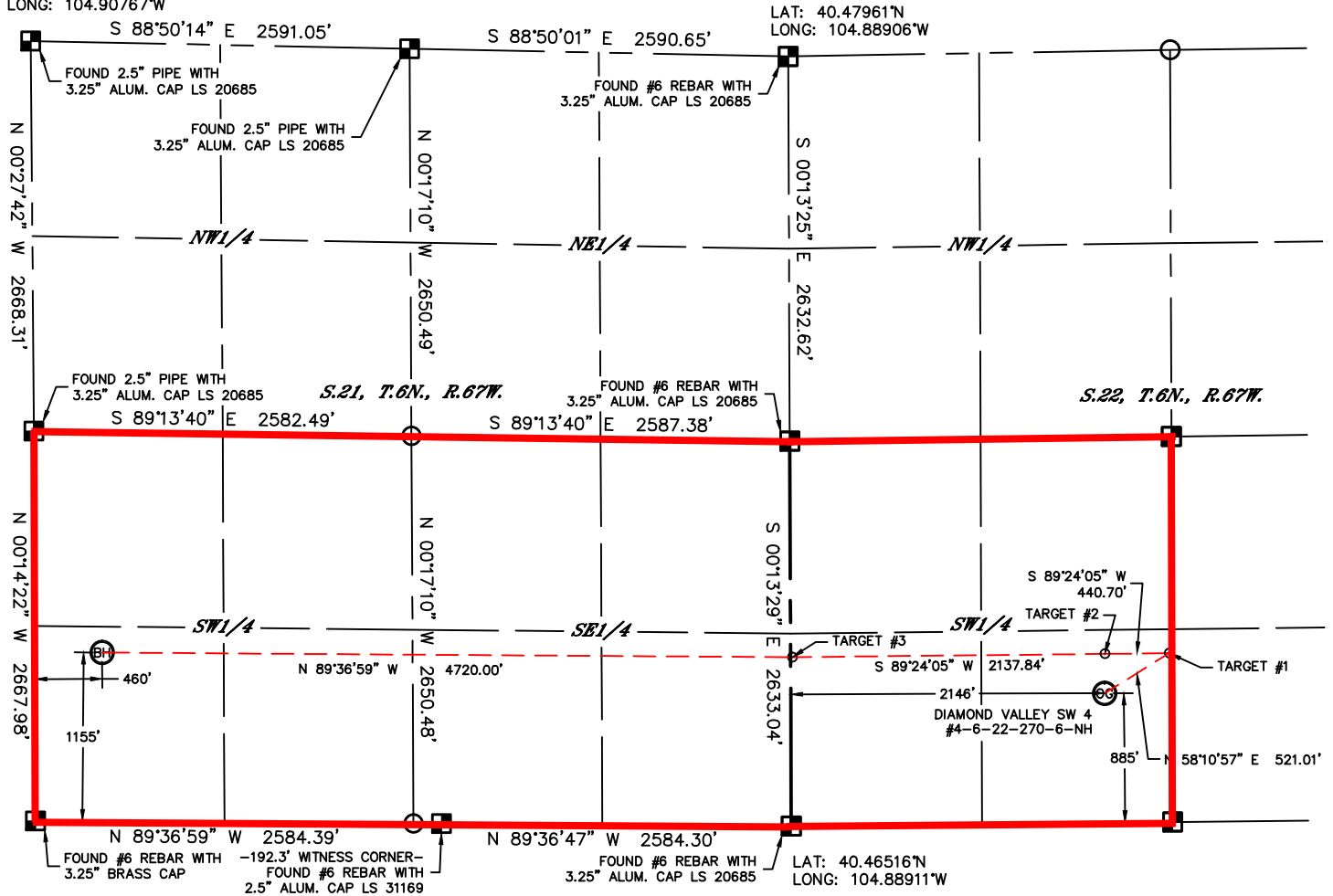
# WELL LOCATION CERTIFICATE

THIS MAP DOES NOT REPRESENT A BOUNDARY SURVEY

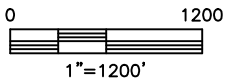
SECTION: 22  
TOWNSHIP: 6N  
RANGE: 67W

## PROPOSED SPACING UNIT

LAT: 40.47999°N  
LONG: 104.90767°W



LAT: 40.46535°N  
LONG: 104.90768°W



### NOTE

According to Colorado law, you must commence any legal action based upon any defect in this W.L.C. within three years after you discover such defect. In no event, may any action based upon any defect in this survey be commenced more than ten years after the date of the certificate shown hereon. (13-80-105 C.R.S.)

### LEGEND



= ALIQUOT MONUMENT AS DESCRIBED



= CALCULATED POSITION

### SHEET 2 OF 2

Brian T. Brinkman—On behalf of  
Colorado Licensed Professional  
Land Surveyor No. 38175  
PROJECT#: 2011212

