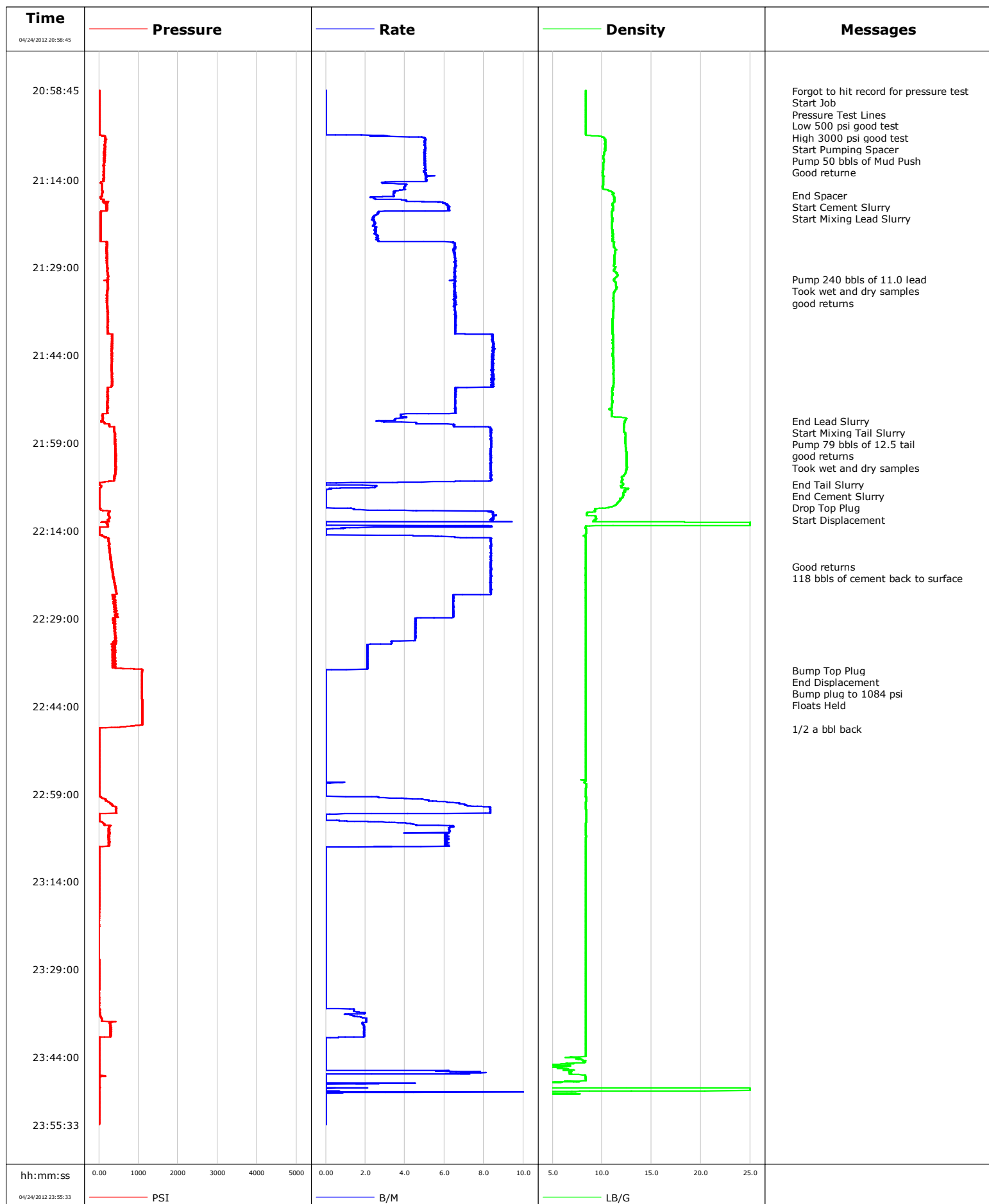


Well	SGU 8516B-21 N22 496	Client	Encana
Field		SIR No.	
Engineer		Job Type	
Country	United States	Job Date	04-24-2012





Cementing Service Report

				Customer Encana			Job Number 733393										
Well SGU 8516B-21 N22 496 SGU 8516B-21 N22 496				Location (legal)			Schlumberger Location			Job Start Apr/24/2012							
Field			Formation Name/Type			Deviation		Bit Size		Well MD 2049.1 ft		Well TVD 2098.1 ft					
County Garfield			State/Province Colorado			BHP 404 psi		BHST 110 degF		BHCT 91 degF		Pore Press. Gradient					
Well Master 0631376108			API/UWI														
Rig Name Patterson 308		Drilled For Gas		Service Via Land		Casing/Liner											
						Depth, ft		Size, in		Weight, lb/ft		Grade		Thread			
Offshore Zone		Well Class New		Well Type Development		2098.5		9.630		36.0		J55		8RD			
						0.0		0.000		0.0							
Drilling Fluid Type Bentonite			Max. Density		Plastic Viscosity		Tubing/Drill Pipe										
							Depth,		Size,		Weight,		Grade		Thread		
Service Line Cementing		Job Type Surface															
Max. Allowed Tub. Press 3000 psi		Max. Allowed Ann. Press 1038 psi		WH Connection Single Cement head		Perforations/Open Hole											
						Top,		Bottom,				No. of Shots		Total Interval			
														Diameter			
						Treat Down Casing		Displacement 158.6 bbl		Packer Type		Packer Depth					
						Tubing Vol.		Casing Vol. 162.0 bbl		Annular Vol. 252.0 bbl		Openhole Vol.					
Casing/Tubing Secured <input type="checkbox"/>		1 Hole Vol. Circulated prior to Cement <input type="checkbox"/>		Casing Tools							Squeeze Job						
Lift Pressure 1038 psi						Shoe Type Float				Squeeze Type							
Pipe Rotated <input type="checkbox"/>		Pipe Reciprocated <input type="checkbox"/>						Shoe Depth 2094.5 ft				Tool Type					
No. Centralizers 9		Top Plugs 1		Bottom Plugs		Stage Tool Type				Tool Depth							
Cement Head Type Single						Stage Tool Depth				Tail Pipe Size							
Job Scheduled For Apr/24/2012		Arrived on Location Apr/24/2012		Leave Location Apr/24/2012		Collar Type Float				Tail Pipe Depth							
						Collar Depth 2049.0 ft				Sqz. Total Vol.							
Date	Time 24-hr clock	Treating Pressure PSI		Flow Rate B/M		Density LB/G		Volume BBL		Message							
04/24/2012	20:19:06									Started Acquisition							
04/24/2012	20:58:45	23		0.0		8.35		0.0									
04/24/2012	20:58:53									Forgot to hit record for pressure test							
04/24/2012	20:58:53	23		0.0		8.35		0.0									
04/24/2012	20:59:00									Start Job							
04/24/2012	20:59:00	22		0.0		8.35		0.0									
04/24/2012	20:59:01									Pressure Test Lines							
04/24/2012	20:59:01	22		0.0		8.35		0.0									
04/24/2012	20:59:14	22		0.0		8.35		0.0									
04/24/2012	21:00:05									Low 500 psi good test							
04/24/2012	21:00:05	22		0.0		8.35		0.0									
04/24/2012	21:00:07									High 3000 psi good test							
04/24/2012	21:00:07	22		0.0		8.35		0.0									
04/24/2012	21:04:15	21		0.0		8.35		0.0									
04/24/2012	21:06:44									Start Pumping Spacer							
04/24/2012	21:06:44	150		4.7		10.02		0.9									
04/24/2012	21:07:47									Pump 50 bbls of Mud Push							
04/24/2012	21:07:47	149		5.0		10.31		6.1									
04/24/2012	21:07:49									Good returne							
04/24/2012	21:07:49	157		5.0		10.30		6.3									
04/24/2012	21:09:16	145		5.0		10.27		13.6									

Well			Field		Job Start	Customer	Job Number
SGU 8516B-21 N22 496 SGU 8516B-21 N22 496					Apr/24/2012	Encana	733393
Date	Time 24-hr clock	Treating Pressure PSI	Flow Rate B/M	Density LB/G	Volume BBL	Message	
04/24/2012	21:16:42					End Spacer	
04/24/2012	21:16:42	84	3.4	11.13	47.7		
04/24/2012	21:16:50					Start Cement Slurry	
04/24/2012	21:16:50	85	3.5	11.15	48.2		
04/24/2012	21:16:52					Start Mixing Lead Slurry	
04/24/2012	21:16:52	84	3.4	11.15	48.3		
04/24/2012	21:19:18	178	6.2	11.10	60.4		
04/24/2012	21:24:19	42	2.6	11.08	73.5		
04/24/2012	21:29:20	223	6.5	11.26	104.9		
04/24/2012	21:31:05					Pump 240 bbls of 11.0 lead	
04/24/2012	21:31:05					Took wet and dry samples	
04/24/2012	21:31:05	223	6.5	11.20	116.3		
04/24/2012	21:31:10					good returns	
04/24/2012	21:31:10	220	6.5	11.22	116.8		
04/24/2012	21:34:21	196	6.6	11.14	137.6		
04/24/2012	21:39:22	225	6.6	11.04	170.4		
04/24/2012	21:44:23	330	8.4	11.14	210.8		
04/24/2012	21:49:24	329	8.5	11.16	253.1		
04/24/2012	21:54:25	85	3.8	10.98	285.2		
04/24/2012	21:55:20					End Lead Slurry	
04/24/2012	21:55:20	69	2.8	12.29	288.5		
04/24/2012	21:55:24					Start Mixing Tail Slurry	
04/24/2012	21:55:24	59	3.0	12.28	288.7		
04/24/2012	21:56:15					Pump 79 bbls of 12.5 tail	
04/24/2012	21:56:15	260	6.5	12.21	293.3		
04/24/2012	21:56:16					good returns	
04/24/2012	21:56:16	274	6.5	12.20	293.4		
04/24/2012	21:58:05					Took wet and dry samples	
04/24/2012	21:58:05	404	8.4	12.35	308.5		
04/24/2012	21:59:26	419	8.4	12.37	319.8		
04/24/2012	22:04:27	422	8.4	12.27	361.6		
04/24/2012	22:06:10					End Tail Slurry	
04/24/2012	22:06:10	9	0.0	12.11	372.4		
04/24/2012	22:06:11					End Cement Slurry	
04/24/2012	22:06:11	9	0.0	12.11	372.4		
04/24/2012	22:06:13					Drop Top Plug	
04/24/2012	22:06:13	9	0.0	12.11	372.4		
04/24/2012	22:06:16					Start Displacement	
04/24/2012	22:06:16	55	1.8	12.05	372.4		
04/24/2012	22:09:28	9	0.0	11.50	373.7		
04/24/2012	22:14:29	2	0.0	8.38	393.4		
04/24/2012	22:19:30	315	8.3	8.35	431.3		
04/24/2012	22:20:10					Good returns	
04/24/2012	22:20:10	322	8.3	8.35	436.9		
04/24/2012	22:20:23					118 bbls of cement back to surface	
04/24/2012	22:20:23	330	8.3	8.31	438.7		
04/24/2012	22:24:31	436	8.3	8.35	473.1		
04/24/2012	22:29:32	412	4.5	8.34	505.1		
04/24/2012	22:34:33	369	2.1	8.34	524.5		
04/24/2012	22:37:53					Bump Top Plug	
04/24/2012	22:37:53	1088	0.0	8.34	531.2		
04/24/2012	22:37:54					End Displacement	
04/24/2012	22:37:54	1088	0.0	8.34	531.2		
04/24/2012	22:38:12					Bump plug to 1084 psi	

Well			Field		Job Start	Customer		Job Number
SGU 8516B-21 N22 496 SGU 8516B-21 N22 496					Apr/24/2012	Encana		733393
Date	Time 24-hr clock	Treating Pressure PSI	Flow Rate B/M	Density LB/G	Volume BBL	Message		
04/24/2012	22:38:13					Floats Held		
04/24/2012	22:38:13	1091	0.0	8.34	531.2			
04/24/2012	22:39:34	1084	0.0	8.34	531.2			
04/24/2012	22:44:35	1094	0.0	8.34	531.2			
04/24/2012	22:47:51					1/2 a bbl back		
04/24/2012	22:47:51	1	0.0	8.34	531.2			
04/24/2012	22:49:36	3	0.0	8.34	531.2			
04/24/2012	22:54:37	4	0.0	8.35	531.2			
04/24/2012	22:59:38	53	2.7	8.39	531.7			
04/24/2012	23:04:39	261	6.5	8.37	555.1			
04/24/2012	23:09:40	1	0.0	8.35	575.9			
04/24/2012	23:14:41	9	0.0	8.35	575.9			
04/24/2012	23:19:42	1	0.0	8.35	575.9			
04/24/2012	23:24:43	-0	0.0	8.35	575.9			
04/24/2012	23:29:44	2	0.0	8.35	575.9			
04/24/2012	23:34:45	2	0.0	8.35	575.9			
04/24/2012	23:39:46	292	1.9	8.34	583.1			
04/24/2012	23:44:47	3	0.0	8.23	584.8			
04/24/2012	23:49:48	0	0.7	12.97	589.1			

Post Job Summary

Average Pump Rates,					Volume of Fluid Injected, bbl				
Slurry	N2	Mud	Maximum Rate		Total Slurry 320.0	Mud	Spacer 50.0	N2	
Treating Pressure Summary, psi					Breakdown Fluid				
Maximum 500	Final 1084	Average	Bump Plug to 500	Breakdown	Type		Volume	Density	
Avg. N2 Percent		Designed Slurry Volume 320.0 bbl		Displacement 158.0 bbl	Mix Water Temp 60 degF	Cement Circulated to Surface? <input checked="" type="checkbox"/>		Volume 118.0 bbl	
						Washed Thru Perfs <input type="checkbox"/>		To	
Customer or Authorized Representative			Schlumberger Supervisor			Circulation Lost <input type="checkbox"/>	Job Completed <input checked="" type="checkbox"/>		
Mike Quintana			Justin Zika			-	-		