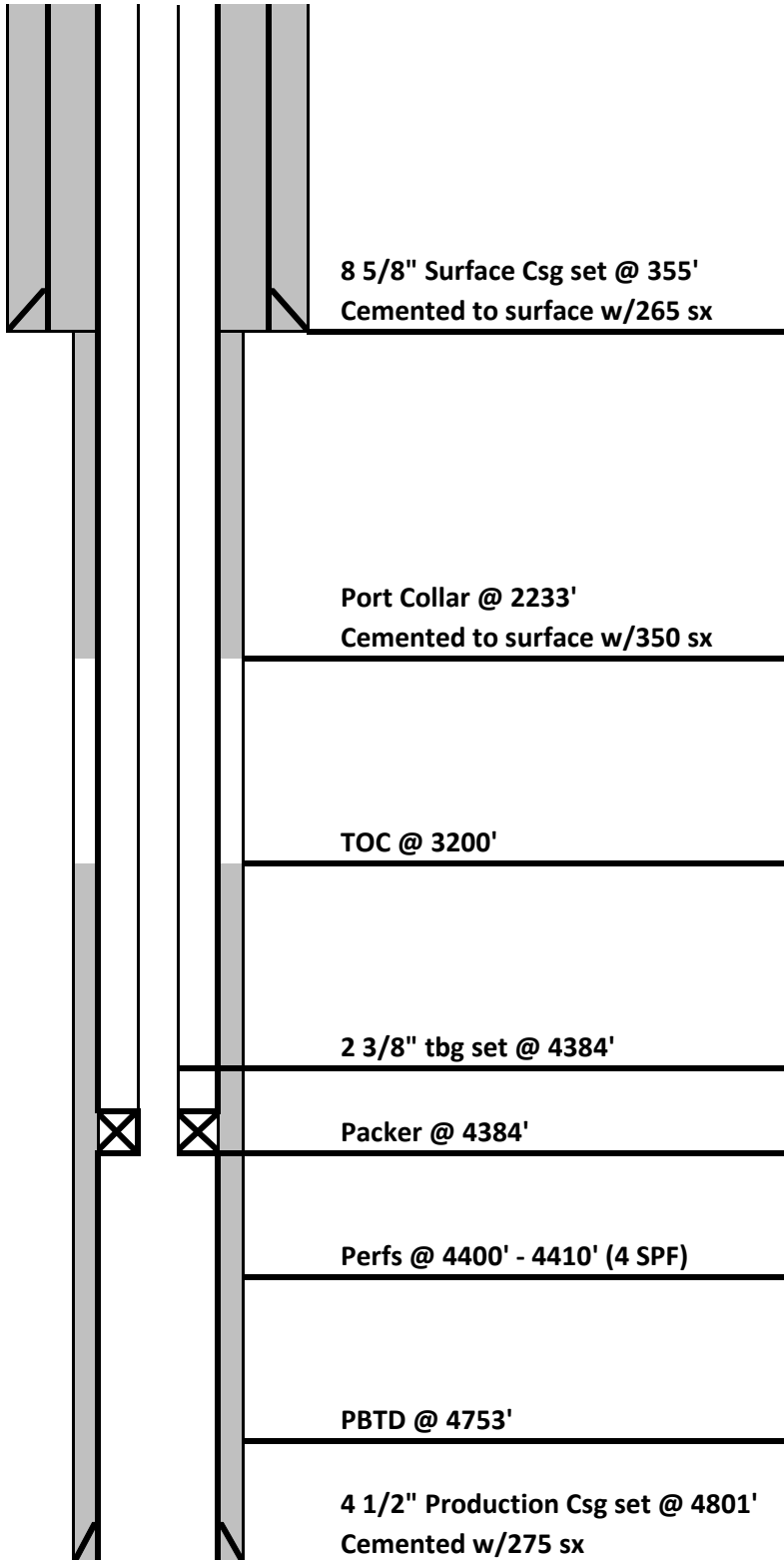




# **DRILLING COMPANY, INC.** **WICHITA, KANSAS**

## **Wellbore Diagram**



Date: 1/17/2013  
 Well Name: McBride-Michel "A" #1-31  
 Location: 605' FNL & 2400' FEL  
NW/4 NE/4 31-18S-45W  
 County: Kiowa  
 State: Colorado  
 API: 05-061-06867-00  
 Spud Date: 1/12/2012

Hole Size 12 1/4"  
 Surface Casing: Set @ 355' (8 5/8")  
 Cemented with: 265 sx  
 Production Csg: Set @ 4801' (4 1/2")  
 Cemented with: 275 sx

### **Log Tops:**

|                |      |
|----------------|------|
| Shawnee        | 3382 |
| Heebner Shale  | 3579 |
| Lansing        | 3610 |
| Marmaton       | 3989 |
| Fort Scott     | 4072 |
| Cherokee Shale | 4127 |
| Atoka          | 4266 |
| Morrow Shale   | 4397 |
| Mississippian  | 4602 |
| RTD            | 4918 |
| LTD            | 4917 |