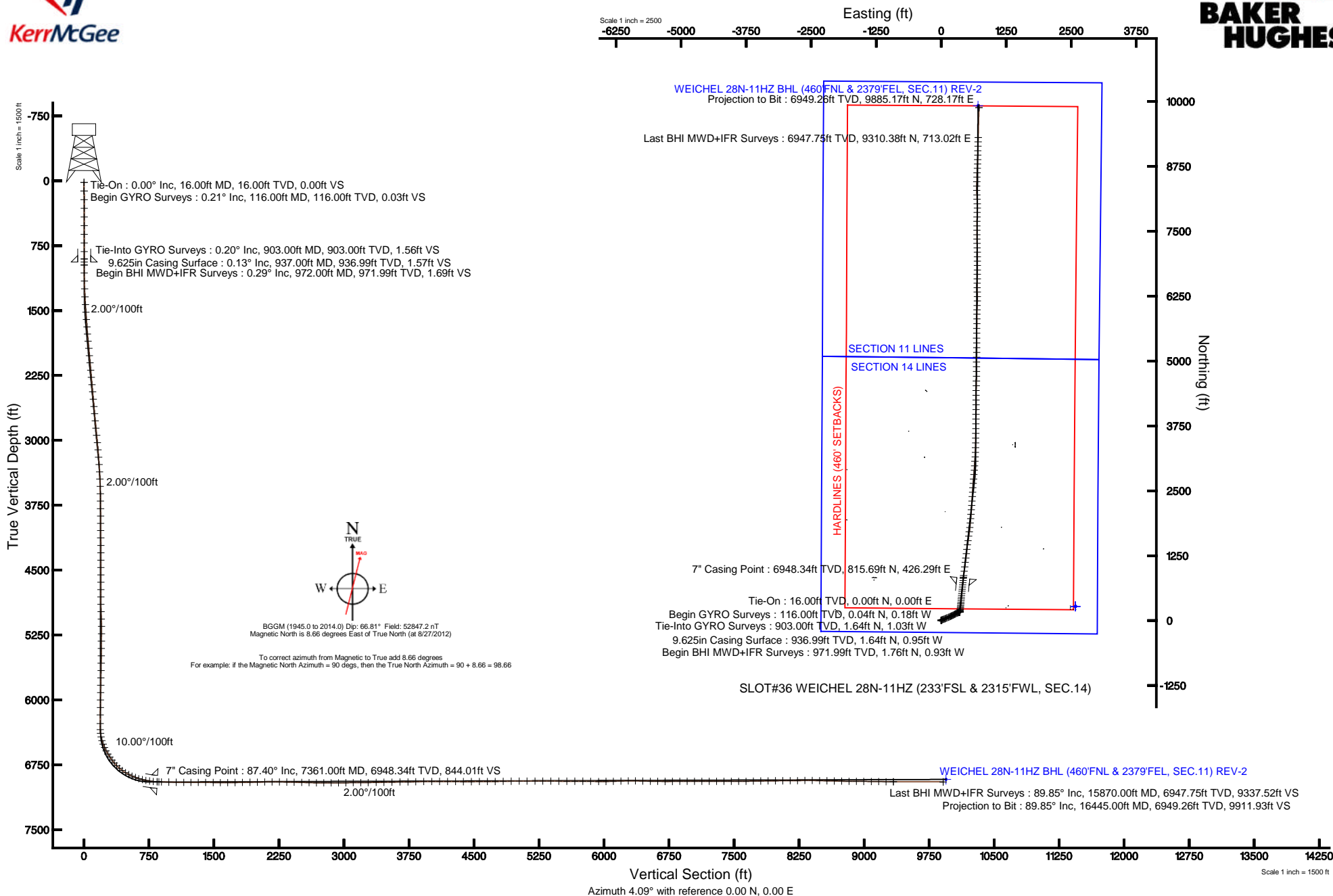


KERR-MCGEE OIL & GAS ONSHORE LP

Location: COLORADO Slot: SLOT#36 WEICHEL 28N-11HZ (233'FSL & 2315'FWL, SEC.14)
 Field: WELD COUNTY (KERR MCGEE) Well: WEICHEL 28N-11HZ
 Facility: SEC.14-T2N-R65W Wellbore: WEICHEL 28N-11HZ PWB

Plot reference wellpath is WEICHEL 28N-11HZ (REV-D.0) PWP

True vertical depths are referenced to XTREME 20 (RKB)	Grid System: NAD83 / Lambert Colorado SP, Northern Zone (501), US feet
Measured depths are referenced to XTREME 20 (RKB)	North Reference: True north
XTREME 20 (RKB) to Mean Sea Level: 4901 feet	Scale: True distance
Mean Sea Level to Mud line (At Slot: SLOT#36 WEICHEL 28N-11HZ (233'FSL & 2315'FWL, SEC.14)): 0 feet	Depths are in feet
Coordinates are in feet referenced to Slot	Created by: wilsje02 on 1/16/2013





Actual Wellpath Report

WEICHEL 28N-11HZ AWP

Page 1 of 8



REFERENCE WELLPATH IDENTIFICATION

Operator	KERR-MCGEE OIL & GAS ONSHORE LP	Slot	SLOT#36 WEICHEL 28N-11HZ (233'FSL & 2315'FWL, SEC.14)
Area	COLORADO	Well	WEICHEL 28N-11HZ
Field	WELD COUNTY (KERR MCGEE)	Wellbore	WEICHEL 28N-11HZ AWB
Facility	SEC.14-T2N-R65W		

REPORT SETUP INFORMATION

Projection System	NAD83 / Lambert Colorado SP, Northern Zone (501), US feet	Software System	WellArchitect® 3.0.2
North Reference	True	User	Wilsjef02
Scale	0.999959	Report Generated	1/16/2013 at 13:41:07
Convergence at slot	0.56° East	Database/Source file	WellArchitectDB/WEICHEL_28N-11HZ_AWB.xml

WELLPATH LOCATION

	Local coordinates		Grid coordinates		Geographic coordinates	
	North[ft]	East[ft]	Easting[US ft]	Northing[US ft]	Latitude	Longitude
Slot Location	-4416.68	283.27	3242599.12	1292102.21	40°07'55.042"N	104°37'56.485"W
Facility Reference Pt			3242272.71	1296515.72	40°08'38.688"N	104°38'00.132"W
Field Reference Pt			3197771.84	1268891.29	40°04'09.600"N	104°47'36.000"W

WELLPATH DATUM

Calculation method	Minimum curvature	XTREME 20 (RKB) to Facility Vertical Datum	4901.00ft
Horizontal Reference Pt	Slot	XTREME 20 (RKB) to Mean Sea Level	4901.00ft
Vertical Reference Pt	XTREME 20 (RKB)	XTREME 20 (RKB) to Mud Line at Slot (SLOT#36 WEICHEL 28N-11HZ (233'FSL & 2315'FWL, SEC.14))	4901.00ft
MD Reference Pt	XTREME 20 (RKB)	Section Origin	N 0.00, E 0.00 ft
Field Vertical Reference	Mean Sea Level	Section Azimuth	4.21°



Actual Wellpath Report

WEICHEL 28N-11HZ AWP

Page 2 of 8



REFERENCE WELLPATH IDENTIFICATION

Operator	KERR-MCGEE OIL & GAS ONSHORE LP	Slot	SLOT#36 WEICHEL 28N-11HZ (233'FSL & 2315'FWL, SEC.14)
Area	COLORADO	Well	WEICHEL 28N-11HZ
Field	WELD COUNTY (KERR MCGEE)	Wellbore	WEICHEL 28N-11HZ AWB
Facility	SEC.14-T2N-R65W		

WELLPATH DATA (198 stations) † = interpolated/extrapolated station

MD [ft]	Inclination [°]	Azimuth [°]	TVD [ft]	Vert Sect [ft]	North [ft]	East [ft]	Latitude	Longitude	DLS [°/100ft]	Comments
0.00†	0.000	283.370	0.00	0.00	0.00	0.00	40°07'55.042"N	104°37'56.485"W	0.00	
16.00	0.000	283.370	16.00	0.00	0.00	0.00	40°07'55.042"N	104°37'56.485"W	0.00	Tie-On
116.00	0.210	283.370	116.00	0.03	0.04	-0.18	40°07'55.042"N	104°37'56.487"W	0.21	Begin GYRO Surveys
216.00	0.270	301.890	216.00	0.17	0.21	-0.56	40°07'55.044"N	104°37'56.492"W	0.10	
316.00	0.320	333.430	316.00	0.52	0.58	-0.88	40°07'55.048"N	104°37'56.496"W	0.17	
416.00	0.290	308.260	416.00	0.90	0.99	-1.21	40°07'55.052"N	104°37'56.501"W	0.14	
516.00	0.180	49.270	516.00	1.15	1.25	-1.28	40°07'55.054"N	104°37'56.502"W	0.37	
616.00	0.120	303.840	616.00	1.31	1.41	-1.25	40°07'55.056"N	104°37'56.501"W	0.24	
716.00	0.150	35.750	716.00	1.48	1.57	-1.26	40°07'55.058"N	104°37'56.501"W	0.20	
816.00	0.020	32.530	816.00	1.60	1.70	-1.18	40°07'55.059"N	104°37'56.500"W	0.13	
903.00	0.200	116.940	903.00	1.56	1.64	-1.03	40°07'55.058"N	104°37'56.498"W	0.23	Tie-Into GYRO Surveys
972.00	0.290	359.300	971.99	1.69	1.76	-0.93	40°07'55.059"N	104°37'56.497"W	0.61	Begin BHI MWD+IFR Surveys
1065.00	0.220	21.670	1064.99	2.09	2.16	-0.87	40°07'55.063"N	104°37'56.496"W	0.13	
1157.00	2.120	56.130	1156.97	3.31	3.27	0.61	40°07'55.074"N	104°37'56.477"W	2.11	
1248.00	4.100	64.690	1247.83	5.95	5.60	4.95	40°07'55.097"N	104°37'56.421"W	2.23	
1341.00	5.930	62.590	1340.47	10.11	9.24	12.22	40°07'55.133"N	104°37'56.328"W	1.98	
1432.00	7.160	62.820	1430.88	15.53	13.99	21.44	40°07'55.180"N	104°37'56.209"W	1.35	
1520.00	8.610	67.470	1518.04	21.35	19.02	32.40	40°07'55.230"N	104°37'56.068"W	1.80	
1605.00	9.820	71.230	1601.95	27.04	23.79	45.14	40°07'55.277"N	104°37'55.904"W	1.59	
1691.00	11.090	72.100	1686.52	33.02	28.69	59.96	40°07'55.326"N	104°37'55.713"W	1.49	
1776.00	11.620	68.670	1769.85	39.79	34.32	75.71	40°07'55.381"N	104°37'55.510"W	1.01	
1861.00	11.500	67.460	1853.13	47.29	40.68	91.51	40°07'55.444"N	104°37'55.307"W	0.32	
1946.00	11.330	67.020	1936.45	54.92	47.19	107.03	40°07'55.508"N	104°37'55.107"W	0.22	
2031.00	11.520	68.890	2019.76	62.37	53.51	122.63	40°07'55.571"N	104°37'54.906"W	0.49	
2117.00	10.420	64.640	2104.19	69.88	59.93	137.67	40°07'55.634"N	104°37'54.713"W	1.59	
2202.00	9.960	65.750	2187.85	77.18	66.24	151.32	40°07'55.697"N	104°37'54.537"W	0.59	
2287.00	10.590	66.290	2271.49	84.34	72.40	165.17	40°07'55.757"N	104°37'54.358"W	0.75	
2372.00	9.120	63.560	2355.23	91.43	78.54	178.36	40°07'55.818"N	104°37'54.189"W	1.81	
2457.00	10.100	63.640	2439.04	98.66	84.85	191.07	40°07'55.880"N	104°37'54.025"W	1.15	
2542.00	10.110	62.750	2522.72	106.34	91.58	204.38	40°07'55.947"N	104°37'53.854"W	0.18	
2628.00	10.400	65.710	2607.35	113.99	98.22	218.16	40°07'56.013"N	104°37'53.676"W	0.70	
2713.00	10.790	67.230	2690.90	121.26	104.46	232.49	40°07'56.074"N	104°37'53.492"W	0.56	
2798.00	10.370	59.790	2774.46	129.19	111.39	246.44	40°07'56.143"N	104°37'53.312"W	1.68	
2883.00	10.150	62.480	2858.10	137.46	118.70	259.69	40°07'56.215"N	104°37'53.142"W	0.62	
2968.00	10.930	63.960	2941.66	145.46	125.70	273.58	40°07'56.284"N	104°37'52.963"W	0.97	
3054.00	10.160	63.190	3026.21	153.47	132.70	287.67	40°07'56.353"N	104°37'52.781"W	0.91	
3139.00	9.520	62.890	3109.96	160.99	139.28	300.62	40°07'56.418"N	104°37'52.615"W	0.76	
3224.00	8.540	62.600	3193.90	167.95	145.39	312.48	40°07'56.479"N	104°37'52.462"W	1.15	
3309.00	7.590	62.610	3278.06	174.20	150.88	323.07	40°07'56.533"N	104°37'52.326"W	1.12	
3395.00	6.300	67.340	3363.43	179.31	155.31	332.47	40°07'56.577"N	104°37'52.205"W	1.64	
3480.00	4.810	63.720	3448.03	183.23	158.68	339.97	40°07'56.610"N	104°37'52.108"W	1.80	
3565.00	3.500	67.680	3532.80	186.20	161.25	345.56	40°07'56.635"N	104°37'52.036"W	1.58	
3650.00	2.000	57.060	3617.71	188.25	163.04	349.21	40°07'56.653"N	104°37'51.989"W	1.86	
3735.00	0.540	12.600	3702.68	189.54	164.24	350.54	40°07'56.665"N	104°37'51.972"W	1.95	
3821.00	0.520	18.710	3788.68	190.32	165.00	350.75	40°07'56.673"N	104°37'51.969"W	0.07	



Actual Wellpath Report

WEICHEL 28N-11HZ AWP

Page 3 of 8



REFERENCE WELLPATH IDENTIFICATION

Operator	KERR-MCGEE OIL & GAS ONSHORE LP	Slot	SLOT#36 WEICHEL 28N-11HZ (233'FSL & 2315'FWL, SEC.14)
Area	COLORADO	Well	WEICHEL 28N-11HZ
Field	WELD COUNTY (KERR MCGEE)	Wellbore	WEICHEL 28N-11HZ AWB
Facility	SEC.14-T2N-R65W		

WELLPATH DATA (198 stations)

MD [ft]	Inclination [°]	Azimuth [°]	TVD [ft]	Vert Sect [ft]	North [ft]	East [ft]	Latitude	Longitude	DLS [°/100ft]	Comments
3906.00	0.560	338.770	3873.68	191.07	165.75	350.73	40°07'56.680"N	104°37'51.970"W	0.44	
3991.00	0.560	346.070	3958.67	191.84	166.54	350.48	40°07'56.688"N	104°37'51.973"W	0.08	
4076.00	0.730	300.260	4043.67	192.47	167.22	349.91	40°07'56.694"N	104°37'51.980"W	0.62	
4161.00	0.520	324.340	4128.66	193.01	167.81	349.22	40°07'56.700"N	104°37'51.989"W	0.39	
4247.00	0.640	42.690	4214.66	193.68	168.48	349.31	40°07'56.707"N	104°37'51.988"W	0.86	
4332.00	0.170	86.290	4299.66	194.07	168.83	349.76	40°07'56.710"N	104°37'51.982"W	0.62	
4417.00	0.150	55.470	4384.66	194.16	168.90	349.98	40°07'56.711"N	104°37'51.979"W	0.10	
4502.00	0.400	345.180	4469.66	194.51	169.25	349.99	40°07'56.715"N	104°37'51.979"W	0.44	
4587.00	0.560	192.920	4554.65	194.38	169.14	349.83	40°07'56.713"N	104°37'51.981"W	1.10	
4672.00	0.240	192.880	4639.65	193.79	168.56	349.69	40°07'56.708"N	104°37'51.983"W	0.38	
4758.00	0.170	105.810	4725.65	193.59	168.35	349.78	40°07'56.706"N	104°37'51.982"W	0.33	
4843.00	0.270	75.200	4810.65	193.63	168.36	350.09	40°07'56.706"N	104°37'51.978"W	0.18	
4928.00	1.150	20.580	4895.64	194.51	169.21	350.58	40°07'56.714"N	104°37'51.971"W	1.20	
5013.00	2.380	21.340	4980.60	197.02	171.66	351.53	40°07'56.738"N	104°37'51.959"W	1.45	
5098.00	1.580	21.900	5065.55	199.82	174.39	352.61	40°07'56.765"N	104°37'51.945"W	0.94	
5183.00	0.740	67.010	5150.53	201.19	175.69	353.55	40°07'56.778"N	104°37'51.933"W	1.39	
5269.00	0.820	145.240	5236.53	200.96	175.40	354.41	40°07'56.775"N	104°37'51.922"W	1.15	
5354.00	0.720	120.970	5321.52	200.25	174.63	355.21	40°07'56.768"N	104°37'51.912"W	0.40	
5439.00	0.500	91.770	5406.52	200.03	174.34	356.04	40°07'56.765"N	104°37'51.901"W	0.44	
5524.00	1.060	169.750	5491.51	199.28	173.55	356.55	40°07'56.757"N	104°37'51.895"W	1.26	
5609.00	0.860	168.910	5576.50	197.90	172.16	356.82	40°07'56.743"N	104°37'51.891"W	0.24	
5694.00	1.230	175.600	5661.48	196.39	170.62	357.01	40°07'56.728"N	104°37'51.889"W	0.46	
5780.00	1.060	176.790	5747.47	194.68	168.91	357.12	40°07'56.711"N	104°37'51.887"W	0.20	
5865.00	1.120	160.960	5832.45	193.14	167.33	357.44	40°07'56.696"N	104°37'51.883"W	0.36	
5950.00	1.110	164.560	5917.44	191.60	165.76	357.93	40°07'56.680"N	104°37'51.877"W	0.08	
6035.00	1.070	168.850	6002.42	190.06	164.18	358.30	40°07'56.664"N	104°37'51.872"W	0.11	
6121.00	1.010	164.500	6088.41	188.57	162.67	358.66	40°07'56.649"N	104°37'51.867"W	0.12	
6206.00	0.980	118.440	6173.39	187.57	161.60	359.50	40°07'56.639"N	104°37'51.857"W	0.92	
6308.00	0.650	132.760	6275.38	186.85	160.79	360.69	40°07'56.631"N	104°37'51.841"W	0.38	
6378.00	1.550	6.730	6345.38	187.55	161.46	361.09	40°07'56.638"N	104°37'51.836"W	2.86	
6421.00	6.640	3.420	6388.25	190.62	164.52	361.31	40°07'56.668"N	104°37'51.833"W	11.85	
6463.00	11.520	4.480	6429.71	197.25	171.13	361.78	40°07'56.733"N	104°37'51.827"W	11.63	
6506.00	16.050	3.440	6471.46	207.49	181.35	362.48	40°07'56.834"N	104°37'51.818"W	10.55	
6548.00	20.120	4.180	6511.38	220.52	194.36	363.35	40°07'56.963"N	104°37'51.807"W	9.71	
6591.00	23.860	7.010	6551.25	236.61	210.37	364.95	40°07'57.121"N	104°37'51.786"W	9.04	
6633.00	27.800	7.680	6589.04	254.88	228.51	367.30	40°07'57.300"N	104°37'51.756"W	9.41	
6676.00	30.440	8.570	6626.60	275.75	249.23	370.26	40°07'57.505"N	104°37'51.718"W	6.22	
6719.00	33.920	5.390	6663.00	298.62	271.95	373.01	40°07'57.729"N	104°37'51.683"W	9.00	
6762.00	35.890	5.260	6698.26	323.22	296.45	375.30	40°07'57.972"N	104°37'51.653"W	4.58	
6804.00	39.810	4.930	6731.42	348.98	322.11	377.58	40°07'58.225"N	104°37'51.624"W	9.35	
6847.00	44.620	4.910	6763.25	377.86	350.89	380.06	40°07'58.510"N	104°37'51.592"W	11.19	
6889.00	49.250	4.980	6791.92	408.54	381.45	382.70	40°07'58.812"N	104°37'51.558"W	11.02	
6932.00	54.120	5.600	6818.58	442.26	415.04	385.82	40°07'59.143"N	104°37'51.518"W	11.38	
6975.00	58.610	5.410	6842.39	478.04	450.66	389.25	40°07'59.495"N	104°37'51.474"W	10.45	
7018.00	61.590	5.880	6863.82	515.30	487.75	392.92	40°07'59.862"N	104°37'51.426"W	6.99	

REFERENCE WELLPATH IDENTIFICATION

Operator	KERR-MCGEE OIL & GAS ONSHORE LP	Slot	SLOT#36 WEICHEL 28N-11HZ (233'FSL & 2315'FWL, SEC.14)
Area	COLORADO	Well	WEICHEL 28N-11HZ
Field	WELD COUNTY (KERR MCGEE)	Wellbore	WEICHEL 28N-11HZ AWB
Facility	SEC.14-T2N-R65W		

WELLPATH DATA (198 stations) † = interpolated/extrapolated station

MD [ft]	Inclination [°]	Azimuth [°]	TVD [ft]	Vert Sect [ft]	North [ft]	East [ft]	Latitude	Longitude	DLS [°/100ft]	Comments
7060.00	66.200	5.080	6882.30	553.00	525.29	396.52	40°08'00.233"N	104°37'51.380"W	11.11	
7103.00	69.030	5.280	6898.67	592.75	564.88	400.11	40°08'00.624"N	104°37'51.334"W	6.60	
7145.00	73.340	5.510	6912.21	632.48	604.45	403.84	40°08'01.015"N	104°37'51.286"W	10.27	
7188.00	75.670	5.350	6923.70	673.91	645.70	407.76	40°08'01.423"N	104°37'51.235"W	5.43	
7230.00	79.950	6.160	6932.57	714.94	686.53	411.88	40°08'01.826"N	104°37'51.182"W	10.36	
7273.00	81.600	6.490	6939.46	757.35	728.72	416.56	40°08'02.243"N	104°37'51.122"W	3.91	
7315.00	83.780	6.270	6944.80	798.98	770.12	421.19	40°08'02.652"N	104°37'51.062"W	5.22	
7361.00†	87.396	6.511	6948.34	844.80	815.69	426.29	40°08'03.103"N	104°37'50.997"W	7.88	7" Casing Point
7380.00	88.890	6.610	6948.96	863.77	834.55	428.46	40°08'03.289"N	104°37'50.969"W	7.88	
7411.00	88.920	7.140	6949.55	894.74	865.32	432.17	40°08'03.593"N	104°37'50.921"W	1.71	
7496.00	87.910	7.210	6951.90	979.59	949.63	442.78	40°08'04.426"N	104°37'50.784"W	1.19	
7581.00	88.670	6.980	6954.44	1064.44	1033.94	453.28	40°08'05.259"N	104°37'50.649"W	0.93	
7667.00	89.540	6.880	6955.78	1150.33	1119.30	463.65	40°08'06.103"N	104°37'50.515"W	1.02	
7751.00	90.000	7.310	6956.12	1234.23	1202.65	474.03	40°08'06.927"N	104°37'50.382"W	0.75	
7836.00	90.030	6.750	6956.09	1319.12	1287.01	484.43	40°08'07.760"N	104°37'50.248"W	0.66	
7921.00	89.820	7.360	6956.21	1404.02	1371.37	494.87	40°08'08.594"N	104°37'50.113"W	0.76	
8007.00	89.480	7.840	6956.73	1489.87	1456.61	506.24	40°08'09.436"N	104°37'49.967"W	0.68	
8091.00	89.380	7.840	6957.57	1573.69	1539.82	517.70	40°08'10.259"N	104°37'49.819"W	0.12	
8176.00	90.430	7.480	6957.71	1658.54	1624.06	529.03	40°08'11.091"N	104°37'49.674"W	1.31	
8261.00	90.550	7.660	6956.98	1743.39	1708.32	540.23	40°08'11.924"N	104°37'49.529"W	0.25	
8346.00	91.110	6.160	6955.75	1828.28	1792.69	550.45	40°08'12.757"N	104°37'49.398"W	1.88	
8432.00	90.860	4.880	6954.27	1914.25	1878.28	558.72	40°08'13.603"N	104°37'49.291"W	1.52	
8517.00	91.050	5.320	6952.85	1999.22	1962.93	566.28	40°08'14.440"N	104°37'49.194"W	0.56	
8602.00	91.170	5.150	6951.21	2084.20	2047.56	574.03	40°08'15.276"N	104°37'49.094"W	0.24	
8688.00	90.490	4.590	6949.96	2170.18	2133.24	581.33	40°08'16.123"N	104°37'49.000"W	1.02	
8773.00	88.950	3.640	6950.38	2255.17	2218.01	587.43	40°08'16.961"N	104°37'48.921"W	2.13	
8858.00	88.950	3.840	6951.94	2340.16	2302.82	592.98	40°08'17.799"N	104°37'48.850"W	0.24	
8943.00	88.770	3.830	6953.63	2425.14	2387.61	598.66	40°08'18.637"N	104°37'48.777"W	0.21	
9029.00	88.650	3.840	6955.56	2511.12	2473.40	604.41	40°08'19.484"N	104°37'48.703"W	0.14	
9114.00	88.400	3.640	6957.75	2596.08	2558.19	609.95	40°08'20.322"N	104°37'48.631"W	0.38	
9199.00	89.140	4.710	6959.58	2681.06	2642.94	616.14	40°08'21.160"N	104°37'48.552"W	1.53	
9284.00	89.720	5.060	6960.42	2766.05	2727.63	623.38	40°08'21.997"N	104°37'48.458"W	0.80	
9370.00	90.030	5.030	6960.61	2852.04	2813.29	630.94	40°08'22.843"N	104°37'48.361"W	0.36	
9455.00	90.580	3.660	6960.16	2937.04	2898.05	637.38	40°08'23.681"N	104°37'48.278"W	1.74	
9540.00	90.490	3.740	6959.36	3022.03	2982.86	642.87	40°08'24.519"N	104°37'48.207"W	0.14	
9625.00	90.460	3.980	6958.66	3107.03	3067.67	648.59	40°08'25.357"N	104°37'48.134"W	0.28	
9711.00	90.400	3.570	6958.01	3193.02	3153.48	654.25	40°08'26.205"N	104°37'48.061"W	0.48	
9796.00	90.890	2.500	6957.06	3278.00	3238.35	658.75	40°08'27.044"N	104°37'48.003"W	1.38	
9888.00	91.080	0.780	6955.47	3369.89	3330.30	661.38	40°08'27.952"N	104°37'47.969"W	1.88	
9980.00	90.890	0.470	6953.89	3461.69	3422.28	662.39	40°08'28.861"N	104°37'47.956"W	0.40	
10072.00	90.830	1.160	6952.51	3553.52	3514.26	663.69	40°08'29.770"N	104°37'47.939"W	0.75	
10164.00	90.740	0.930	6951.25	3645.37	3606.24	665.37	40°08'30.679"N	104°37'47.917"W	0.27	
10256.00	90.590	0.880	6950.18	3737.21	3698.22	666.82	40°08'31.588"N	104°37'47.899"W	0.17	
10348.00	91.630	0.760	6948.40	3829.03	3790.19	668.14	40°08'32.497"N	104°37'47.882"W	1.14	
10440.00	91.450	0.510	6945.93	3920.82	3882.15	669.16	40°08'33.406"N	104°37'47.869"W	0.33	



Actual Wellpath Report

WEICHEL 28N-11HZ AWP

Page 5 of 8



REFERENCE WELLPATH IDENTIFICATION

Operator	KERR-MCGEE OIL & GAS ONSHORE LP	Slot	SLOT#36 WEICHEL 28N-11HZ (233'FSL & 2315'FWL, SEC.14)
Area	COLORADO	Well	WEICHEL 28N-11HZ
Field	WELD COUNTY (KERR MCGEE)	Wellbore	WEICHEL 28N-11HZ AWB
Facility	SEC.14-T2N-R65W		

WELLPATH DATA (198 stations)

MD [ft]	Inclination [°]	Azimuth [°]	TVD [ft]	Vert Sect [ft]	North [ft]	East [ft]	Latitude	Longitude	DLS [°/100ft]	Comments
10532.00	90.250	0.210	6944.56	4012.60	3974.14	669.74	40°08'34.315"N	104°37'47.861"W	1.34	
10623.00	90.060	0.600	6944.32	4103.40	4065.13	670.38	40°08'35.214"N	104°37'47.853"W	0.48	
10715.00	89.540	359.490	6944.64	4195.15	4157.13	670.45	40°08'36.123"N	104°37'47.852"W	1.33	
10807.00	88.950	0.060	6945.85	4286.87	4249.12	670.09	40°08'37.032"N	104°37'47.856"W	0.89	
10898.00	89.720	0.620	6946.91	4377.65	4340.11	670.63	40°08'37.931"N	104°37'47.849"W	1.05	
10990.00	90.520	1.710	6946.71	4469.52	4432.09	672.50	40°08'38.840"N	104°37'47.825"W	1.47	
11082.00	90.310	1.300	6946.05	4561.42	4524.06	674.92	40°08'39.749"N	104°37'47.794"W	0.50	
11174.00	89.880	1.630	6945.90	4653.31	4616.03	677.27	40°08'40.658"N	104°37'47.764"W	0.59	
11266.00	91.350	0.610	6944.91	4745.17	4708.00	679.07	40°08'41.567"N	104°37'47.741"W	1.94	
11358.00	91.020	0.620	6943.01	4836.96	4799.98	680.06	40°08'42.476"N	104°37'47.728"W	0.36	
11450.00	90.990	0.280	6941.39	4928.75	4891.96	680.78	40°08'43.385"N	104°37'47.719"W	0.37	
11542.00	90.460	0.130	6940.23	5020.52	4983.95	681.11	40°08'44.294"N	104°37'47.714"W	0.60	
11634.00	90.180	0.640	6939.71	5112.31	5075.95	681.73	40°08'45.203"N	104°37'47.706"W	0.63	
11726.00	90.030	0.380	6939.54	5204.12	5167.94	682.54	40°08'46.112"N	104°37'47.696"W	0.33	
11817.00	89.690	0.110	6939.77	5294.90	5258.94	682.93	40°08'47.011"N	104°37'47.691"W	0.48	
11909.00	89.230	359.570	6940.63	5386.63	5350.94	682.68	40°08'47.920"N	104°37'47.694"W	0.77	
12002.00	89.630	359.930	6941.56	5479.34	5443.93	682.27	40°08'48.839"N	104°37'47.699"W	0.58	
12094.00	90.060	1.350	6941.81	5571.16	5535.92	683.30	40°08'49.748"N	104°37'47.686"W	1.61	
12186.00	90.120	1.370	6941.66	5663.05	5627.90	685.48	40°08'50.657"N	104°37'47.658"W	0.07	
12278.00	89.660	1.090	6941.84	5754.92	5719.87	687.46	40°08'51.566"N	104°37'47.632"W	0.59	
12370.00	88.640	0.310	6943.21	5846.74	5811.85	688.58	40°08'52.475"N	104°37'47.618"W	1.40	
12462.00	89.600	0.340	6944.62	5938.51	5903.84	689.10	40°08'53.384"N	104°37'47.611"W	1.04	
12547.00	90.620	0.930	6944.46	6023.35	5988.83	690.05	40°08'54.224"N	104°37'47.599"W	1.39	
12632.00	91.690	2.240	6942.74	6108.24	6073.78	692.40	40°08'55.064"N	104°37'47.569"W	1.99	
12718.00	92.220	1.560	6939.81	6194.11	6159.68	695.25	40°08'55.912"N	104°37'47.532"W	1.00	
12803.00	90.120	359.090	6938.07	6278.89	6244.65	695.73	40°08'56.752"N	104°37'47.526"W	3.81	
12888.00	89.260	359.020	6938.53	6363.54	6329.64	694.32	40°08'57.592"N	104°37'47.544"W	1.02	
12973.00	88.800	359.220	6939.97	6448.20	6414.62	693.02	40°08'58.432"N	104°37'47.560"W	0.59	
13059.00	88.520	0.860	6941.98	6533.94	6500.59	693.08	40°08'59.281"N	104°37'47.560"W	1.93	
13144.00	89.480	0.740	6943.47	6618.78	6585.57	694.27	40°09'00.121"N	104°37'47.544"W	1.14	
13229.00	89.480	359.920	6944.24	6703.58	6670.56	694.76	40°09'00.961"N	104°37'47.538"W	0.96	
13314.00	90.800	0.830	6944.03	6788.38	6755.56	695.31	40°09'01.801"N	104°37'47.531"W	1.89	
13400.00	90.280	0.300	6943.22	6874.20	6841.55	696.16	40°09'02.651"N	104°37'47.520"W	0.86	
13485.00	90.340	0.590	6942.76	6959.02	6926.55	696.82	40°09'03.491"N	104°37'47.511"W	0.35	
13570.00	90.180	359.280	6942.37	7043.78	7011.54	696.72	40°09'04.331"N	104°37'47.513"W	1.55	
13655.00	89.260	358.360	6942.79	7128.40	7096.52	694.97	40°09'05.170"N	104°37'47.535"W	1.53	
13741.00	90.120	358.220	6943.25	7213.94	7182.48	692.41	40°09'06.020"N	104°37'47.568"W	1.01	
13826.00	89.540	358.680	6943.51	7298.51	7267.45	690.11	40°09'06.859"N	104°37'47.598"W	0.87	
13911.00	90.400	359.760	6943.55	7383.18	7352.44	688.95	40°09'07.699"N	104°37'47.613"W	1.62	
13996.00	90.460	359.440	6942.91	7467.91	7437.43	688.36	40°09'08.539"N	104°37'47.620"W	0.38	
14081.00	90.250	359.140	6942.39	7552.59	7522.43	687.30	40°09'09.379"N	104°37'47.634"W	0.43	
14167.00	90.180	0.790	6942.06	7638.35	7608.42	687.25	40°09'10.229"N	104°37'47.634"W	1.92	
14252.00	91.540	1.720	6940.79	7723.23	7693.39	689.11	40°09'11.069"N	104°37'47.610"W	1.94	
14337.00	90.520	0.450	6939.26	7808.08	7778.36	690.72	40°09'11.908"N	104°37'47.590"W	1.92	
14422.00	91.140	2.660	6938.03	7892.98	7863.31	693.03	40°09'12.748"N	104°37'47.560"W	2.70	



Actual Wellpath Report

WEICHEL 28N-11HZ AWP

Page 6 of 8



REFERENCE WELLPATH IDENTIFICATION

Operator	KERR-MCGEE OIL & GAS ONSHORE LP	Slot	SLOT#36 WEICHEL 28N-11HZ (233'FSL & 2315'FWL, SEC.14)
Area	COLORADO	Well	WEICHEL 28N-11HZ
Field	WELD COUNTY (KERR MCGEE)	Wellbore	WEICHEL 28N-11HZ AWB
Facility	SEC.14-T2N-R65W		

WELLPATH DATA (198 stations)

MD [ft]	Inclination [°]	Azimuth [°]	TVD [ft]	Vert Sect [ft]	North [ft]	East [ft]	Latitude	Longitude	DLS [°/100ft]	Comments
14507.00	90.490	0.810	6936.82	7977.88	7948.26	695.60	40°09'13.587"N	104°37'47.527"W	2.31	
14592.00	89.940	357.170	6936.50	8062.52	8033.23	694.10	40°09'14.427"N	104°37'47.546"W	4.33	
14677.00	91.020	358.140	6935.79	8146.96	8118.16	690.63	40°09'15.266"N	104°37'47.591"W	1.71	
14763.00	90.680	357.220	6934.51	8232.39	8204.07	687.14	40°09'16.115"N	104°37'47.635"W	1.14	
14848.00	90.620	359.670	6933.55	8316.94	8289.03	684.84	40°09'16.955"N	104°37'47.665"W	2.88	
14933.00	89.110	0.720	6933.75	8401.73	8374.03	685.13	40°09'17.795"N	104°37'47.661"W	2.16	
15018.00	88.950	0.640	6935.19	8486.56	8459.01	686.14	40°09'18.635"N	104°37'47.648"W	0.21	
15103.00	88.710	0.930	6936.92	8571.39	8543.98	687.30	40°09'19.474"N	104°37'47.633"W	0.44	
15189.00	88.550	3.150	6938.98	8657.30	8629.90	690.36	40°09'20.323"N	104°37'47.594"W	2.59	
15274.00	88.370	3.210	6941.26	8742.25	8714.74	695.07	40°09'21.162"N	104°37'47.533"W	0.22	
15359.00	89.570	3.020	6942.79	8827.22	8799.60	699.69	40°09'22.000"N	104°37'47.474"W	1.43	
15444.00	89.660	1.040	6943.36	8912.15	8884.54	702.70	40°09'22.840"N	104°37'47.435"W	2.33	
15529.00	89.690	0.720	6943.84	8997.01	8969.52	704.01	40°09'23.679"N	104°37'47.418"W	0.38	
15615.00	89.380	1.400	6944.54	9082.87	9055.51	705.60	40°09'24.529"N	104°37'47.397"W	0.87	
15700.00	89.080	1.920	6945.68	9167.78	9140.46	708.06	40°09'25.369"N	104°37'47.366"W	0.71	
15785.00	89.140	1.630	6947.00	9252.69	9225.41	710.69	40°09'26.208"N	104°37'47.332"W	0.35	
15870.00	89.850	1.510	6947.75	9337.60	9310.38	713.02	40°09'27.048"N	104°37'47.302"W	0.85	Last BHI MWD+IFR Surveys
16445.00	89.850	1.510	6949.26	9911.96	9885.17	728.17	40°09'32.728"N	104°37'47.106"W	0.00	Projection to Bit

HOLE & CASING SECTIONS - Ref Wellbore: WEICHEL 28N-11HZ AWB Ref Wellpath: WEICHEL 28N-11HZ AWP

String/Diameter	Start MD [ft]	End MD [ft]	Interval [ft]	Start TVD [ft]	End TVD [ft]	Start N/S [ft]	Start E/W [ft]	End N/S [ft]	End E/W [ft]
13.5in Open Hole	16.00	937.00	921.00	16.00	936.99	0.00	0.00	1.64	-0.95
9.625in Casing Surface	16.00	937.00	921.00	16.00	936.99	0.00	0.00	1.64	-0.95
8.75in Open Hole	937.00	7370.00	6433.00	936.99	6948.69	1.64	-0.95	824.62	427.31
7in Casing Intermediate	16.00	7361.00	7345.00	16.00	6948.34	0.00	0.00	815.69	426.29
6.125in Open Hole	7361.00	16445.00	9084.00	6948.34	6949.26	815.69	426.29	9885.17	728.17



Actual Wellpath Report

WEICHEL 28N-11HZ AWP

Page 7 of 8



REFERENCE WELLPATH IDENTIFICATION

Operator	KERR-MCGEE OIL & GAS ONSHORE LP	Slot	SLOT#36 WEICHEL 28N-11HZ (233'FSL & 2315'FWL, SEC.14)
Area	COLORADO	Well	WEICHEL 28N-11HZ
Field	WELD COUNTY (KERR MCGEE)	Wellbore	WEICHEL 28N-11HZ AWB
Facility	SEC.14-T2N-R65W		

TARGETS

Name	MD [ft]	TVD [ft]	North [ft]	East [ft]	Grid East [US ft]	Grid North [US ft]	Latitude	Longitude	Shape
WEICHEL 3 PAD SECTION 11 LINES		6.00	271.49	2584.80	3245181.02	1292398.97	40°07'57.724"N	104°37'23.207"W	polygon
WEICHEL 3 PAD SECTION 14 LINES		6.00	271.49	2584.80	3245181.02	1292398.97	40°07'57.724"N	104°37'23.207"W	polygon
WEICHEL 28N-11HZ BHL (460'FNL & 2379'FEL, SEC.11) REV-2		6921.00	9920.08	709.25	3243211.25	1302028.34	40°09'33.073"N	104°37'47.350"W	point
WEICHEL 28N-11HZ BHL ON PLAT (460'FNL & 2629'FEL, SEC.11) REV-1		6921.00	9920.08	459.25	3242961.27	1302025.89	40°09'33.073"N	104°37'50.570"W	point
WEICHEL 3 PAD HARDLINES (460' SETBACKS)		7206.00	271.49	2584.80	3245181.02	1292398.97	40°07'57.724"N	104°37'23.207"W	polygon

WELLPATH COMPOSITION - Ref Wellbore: WEICHEL 28N-11HZ AWB Ref Wellpath: WEICHEL 28N-11HZ AWP

Start MD [ft]	End MD [ft]	Positional Uncertainty Model	Log Name/Comment	Wellbore
16.00	903.00	Generic gyro - continuous (Standard)	GYRODATA SURVYES <116-903>	WEICHEL 28N-11HZ AWB
903.00	7315.00	NaviTrak (MAGCORR,IFR)	BHI MWD+IFR SURVEYS 8 3/4" HOLE <972-7315>	WEICHEL 28N-11HZ AWB
7315.00	15870.00	OnTrak (MAGCORR,IFR)	BHI MWD+IFR SURVEYS 6 1/8" HOLE <7380-15870>	WEICHEL 28N-11HZ AWB
15870.00	16445.00	Blind Drilling (std)	Projection to bit	WEICHEL 28N-11HZ AWB



Actual Wellpath Report

WEICHEL 28N-11HZ AWP

Page 8 of 8



REFERENCE WELLPATH IDENTIFICATION

Operator	KERR-MCGEE OIL & GAS ONSHORE LP	Slot	SLOT#36 WEICHEL 28N-11HZ (233'FSL & 2315'FWL, SEC.14)
Area	COLORADO	Well	WEICHEL 28N-11HZ
Field	WELD COUNTY (KERR MCGEE)	Wellbore	WEICHEL 28N-11HZ AWB
Facility	SEC.14-T2N-R65W		

WELLPATH COMMENTS

MD [ft]	Inclination [°]	Azimuth [°]	TVD [ft]	Comment
16.00	0.000	283.370	16.00	Tie-On
116.00	0.210	283.370	116.00	Begin GYRO Surveys
903.00	0.200	116.940	903.00	Tie-Into GYRO Surveys
972.00	0.290	359.300	971.99	Begin BHI MWD+IFR Surveys
7361.00	87.396	6.511	6948.34	7" Casing Point
15870.00	89.850	1.510	6947.75	Last BHI MWD+IFR Surveys
16445.00	89.850	1.510	6949.26	Projection to Bit