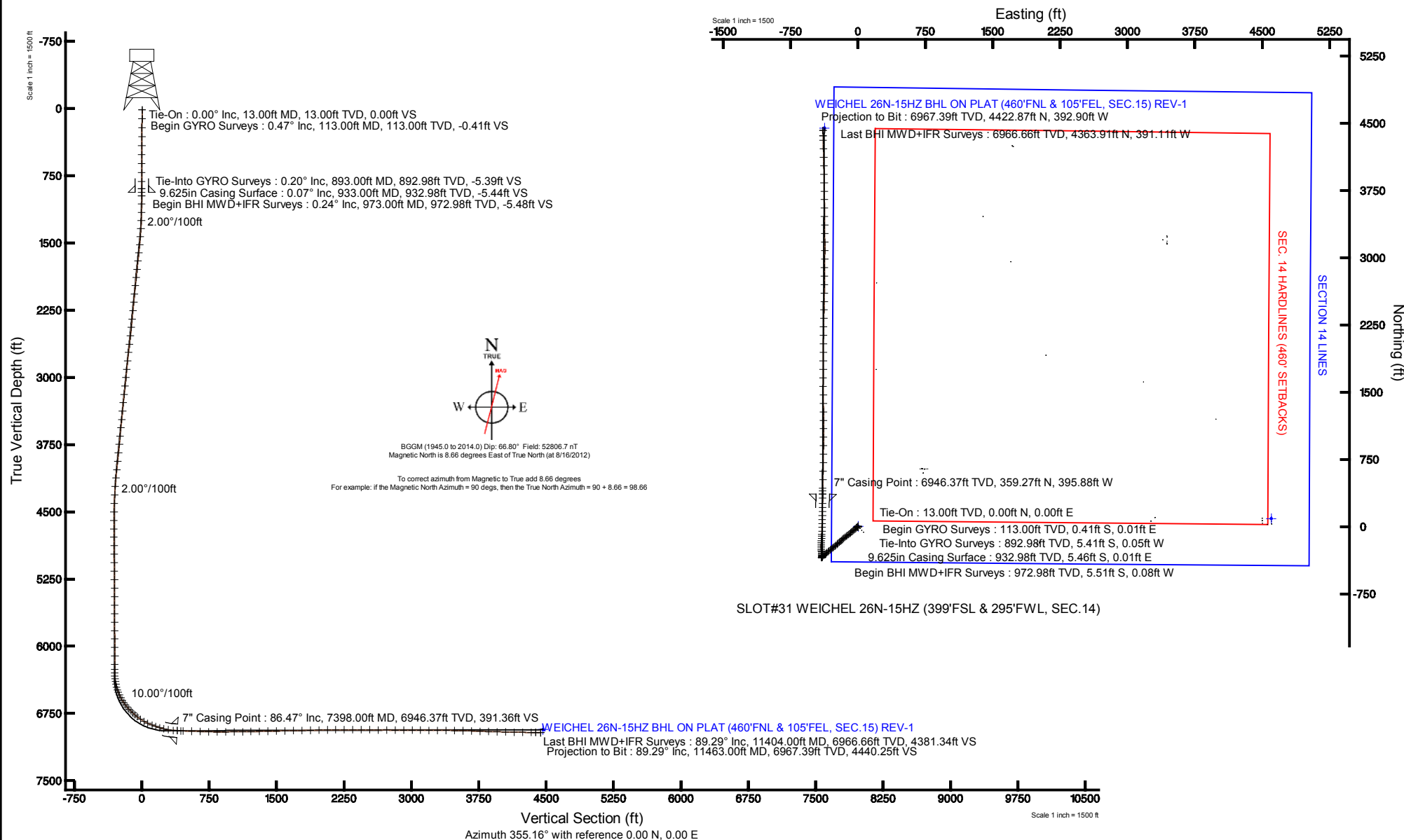


KERR-MCGEE OIL & GAS ONSHORE LP

Location: COLORADO Slot: SLOT#31 WEICHEL 26N-15HZ (399'FSL & 295'FWL, SEC.14)
 Field: WELD COUNTY (KERR MCGEE) Well: WEICHEL 26N-15HZ
 Facility: SEC.14-T2N-R65W Wellbore: WEICHEL 26N-15HZ PWB

Plot reference wellpath is WEICHEL 26N-15HZ (REV-A.0) PWP

True vertical depths are referenced to ENSIGN 145 (RKB)	Grid System: NAD83 / Lambert Colorado SP, Northern Zone (501), US feet
Measured depths are referenced to ENSIGN 145 (RKB)	North Reference: True north
ENSGIN 145 (RKB) to Mean Sea Level: 4905 feet	Scale: True distance
Mean Sea Level to Mud line (At Slot: SLOT#31 WEICHEL 26N-15HZ (399'FSL & 295'FWL, SEC.14)): 0 feet	Depths are in feet
Coordinates are in feet referenced to Slot	Created by: wilsjeff02 on 1/16/2013





Actual Wellpath Report

WEICHEL 26N-15HZ AWP

Page 1 of 6



REFERENCE WELLPATH IDENTIFICATION

Operator	KERR-MCGEE OIL & GAS ONSHORE LP	Slot	SLOT#31 WEICHEL 26N-15HZ (399'FSL & 295'FWL, SEC.14)
Area	COLORADO	Well	WEICHEL 26N-15HZ
Field	WELD COUNTY (KERR MCGEE)	Wellbore	WEICHEL 26N-15HZ AWB
Facility	SEC.14-T2N-R65W		

REPORT SETUP INFORMATION

Projection System	NAD83 / Lambert Colorado SP, Northern Zone (501), US feet	Software System	WellArchitect® 3.0.2
North Reference	True	User	Wilsjef02
Scale	0.999959	Report Generated	1/16/2013 at 12:45:38
Convergence at slot	0.56° East	Database/Source file	WellArchitectDB/WEICHEL_26N-15HZ_AWB.xml

WELLPATH LOCATION

	Local coordinates		Grid coordinates		Geographic coordinates	
	North[ft]	East[ft]	Easting[US ft]	Northing[US ft]	Latitude	Longitude
Slot Location	-4231.94	-1735.05	3240579.17	1292267.21	40°07'56.867"N	104°38'22.470"W
Facility Reference Pt			3242272.71	1296515.72	40°08'38.688"N	104°38'00.132"W
Field Reference Pt			3197771.84	1268891.29	40°04'09.600"N	104°47'36.000"W

WELLPATH DATUM

Calculation method	Minimum curvature	ENSIGN 145 (RKB) to Facility Vertical Datum	4905.00ft
Horizontal Reference Pt	Slot	ENSIGN 145 (RKB) to Mean Sea Level	4905.00ft
Vertical Reference Pt	ENSIGN 145 (RKB)	ENSIGN 145 (RKB) to Mud Line at Slot (SLOT#31 WEICHEL 26N-15HZ (399'FSL & 295'FWL, SEC.14))	4905.00ft
MD Reference Pt	ENSIGN 145 (RKB)	Section Origin	N 0.00, E 0.00 ft
Field Vertical Reference	Mean Sea Level	Section Azimuth	354.92°

REFERENCE WELLPATH IDENTIFICATION

Operator	KERR-MCGEE OIL & GAS ONSHORE LP	Slot	SLOT#31 WEICHEL 26N-15HZ (399'FSL & 295'FWL, SEC.14)
Area	COLORADO	Well	WEICHEL 26N-15HZ
Field	WELD COUNTY (KERR MCGEE)	Wellbore	WEICHEL 26N-15HZ AWB
Facility	SEC.14-T2N-R65W		

WELLPATH DATA (143 stations) † = interpolated/extrapolated station

MD [ft]	Inclination [°]	Azimuth [°]	TVD [ft]	Vert Sect [ft]	North [ft]	East [ft]	Latitude	Longitude	DLS [°/100ft]	Comments
0.00†	0.000	179.030	0.00	0.00	0.00	0.00	40°07'56.867"N	104°38'22.470"W	0.00	
13.00	0.000	179.030	13.00	0.00	0.00	0.00	40°07'56.867"N	104°38'22.470"W	0.00	Tie-On
113.00	0.470	179.030	113.00	-0.41	-0.41	0.01	40°07'56.863"N	104°38'22.470"W	0.47	Begin GYRO Surveys
213.00	0.670	171.630	212.99	-1.40	-1.40	0.10	40°07'56.853"N	104°38'22.469"W	0.21	
313.00	0.550	176.610	312.99	-2.47	-2.46	0.21	40°07'56.843"N	104°38'22.467"W	0.13	
413.00	0.480	182.840	412.98	-3.36	-3.35	0.22	40°07'56.834"N	104°38'22.467"W	0.09	
513.00	0.230	186.660	512.98	-3.97	-3.97	0.18	40°07'56.828"N	104°38'22.468"W	0.25	
613.00	0.380	204.890	612.98	-4.46	-4.47	0.01	40°07'56.823"N	104°38'22.470"W	0.18	
713.00	0.270	195.270	712.98	-4.96	-5.00	-0.19	40°07'56.818"N	104°38'22.472"W	0.12	
813.00	0.100	154.930	812.98	-5.27	-5.31	-0.21	40°07'56.815"N	104°38'22.473"W	0.20	
893.00	0.200	107.190	892.98	-5.38	-5.41	-0.05	40°07'56.814"N	104°38'22.471"W	0.19	Tie-Into GYRO Surveys
973.00	0.240	250.620	972.98	-5.48	-5.51	-0.08	40°07'56.813"N	104°38'22.471"W	0.52	Begin BHI MWD+IFR Surveys
1064.00	1.830	264.860	1063.96	-5.53	-5.70	-1.70	40°07'56.811"N	104°38'22.492"W	1.76	
1157.00	2.880	250.910	1156.88	-6.10	-6.60	-5.39	40°07'56.802"N	104°38'22.539"W	1.28	
1248.00	4.380	234.820	1247.70	-8.39	-9.35	-10.39	40°07'56.775"N	104°38'22.604"W	1.98	
1339.00	5.990	228.820	1338.32	-12.93	-14.48	-16.80	40°07'56.724"N	104°38'22.686"W	1.86	
1431.00	7.190	228.690	1429.71	-19.16	-21.44	-24.74	40°07'56.655"N	104°38'22.789"W	1.30	
1523.00	9.590	229.420	1520.72	-27.02	-30.23	-34.89	40°07'56.568"N	104°38'22.919"W	2.61	
1614.00	10.570	229.930	1610.32	-36.21	-40.53	-47.03	40°07'56.466"N	104°38'23.076"W	1.08	
1706.00	10.370	230.030	1700.79	-45.78	-51.28	-59.84	40°07'56.360"N	104°38'23.240"W	0.22	
1798.00	9.750	227.740	1791.37	-55.23	-61.84	-71.95	40°07'56.256"N	104°38'23.396"W	0.80	
1890.00	10.250	230.230	1881.97	-64.60	-72.31	-84.00	40°07'56.152"N	104°38'23.552"W	0.72	
1985.00	9.720	229.190	1975.53	-74.09	-82.96	-96.57	40°07'56.047"N	104°38'23.713"W	0.59	
2079.00	10.160	232.390	2068.12	-83.18	-93.21	-109.15	40°07'55.946"N	104°38'23.875"W	0.75	
2174.00	10.680	233.250	2161.56	-92.31	-103.59	-122.84	40°07'55.843"N	104°38'24.051"W	0.57	
2269.00	9.780	232.570	2255.05	-101.25	-113.76	-136.30	40°07'55.743"N	104°38'24.225"W	0.96	
2364.00	9.920	231.320	2348.65	-110.10	-123.78	-149.09	40°07'55.644"N	104°38'24.389"W	0.27	
2459.00	10.550	232.360	2442.13	-119.31	-134.20	-162.37	40°07'55.541"N	104°38'24.560"W	0.69	
2554.00	9.760	225.210	2535.65	-129.14	-145.19	-174.97	40°07'55.432"N	104°38'24.723"W	1.56	
2648.00	10.060	225.170	2628.25	-139.48	-156.59	-186.45	40°07'55.320"N	104°38'24.870"W	0.32	
2743.00	9.700	223.850	2721.84	-150.04	-168.21	-197.88	40°07'55.205"N	104°38'25.018"W	0.45	
2838.00	10.250	227.270	2815.40	-160.46	-179.72	-209.63	40°07'55.091"N	104°38'25.169"W	0.85	
2933.00	9.320	230.850	2909.02	-169.94	-190.31	-221.80	40°07'54.986"N	104°38'25.326"W	1.17	
3028.00	10.170	231.350	3002.65	-178.88	-200.40	-234.32	40°07'54.887"N	104°38'25.487"W	0.90	
3122.00	10.220	229.720	3095.16	-188.28	-210.98	-247.16	40°07'54.782"N	104°38'25.652"W	0.31	
3217.00	10.030	228.450	3188.68	-198.06	-221.92	-259.78	40°07'54.674"N	104°38'25.815"W	0.31	
3312.00	9.780	231.170	3282.27	-207.46	-232.46	-272.26	40°07'54.570"N	104°38'25.975"W	0.56	
3407.00	10.310	231.260	3375.81	-216.65	-242.84	-285.18	40°07'54.467"N	104°38'26.141"W	0.56	
3502.00	9.720	229.490	3469.36	-226.02	-253.37	-297.90	40°07'54.363"N	104°38'26.305"W	0.70	
3597.00	9.350	231.760	3563.05	-234.89	-263.36	-310.06	40°07'54.264"N	104°38'26.462"W	0.56	
3691.00	9.960	234.720	3655.72	-243.15	-272.78	-322.70	40°07'54.171"N	104°38'26.625"W	0.84	
3786.00	9.790	229.480	3749.31	-251.97	-282.77	-335.54	40°07'54.073"N	104°38'26.790"W	0.96	
3881.00	10.090	229.020	3842.89	-261.53	-293.48	-347.97	40°07'53.967"N	104°38'26.950"W	0.33	
3976.00	9.160	227.970	3936.55	-270.96	-304.00	-359.87	40°07'53.863"N	104°38'27.103"W	1.00	
4071.00	9.170	227.420	4030.34	-280.12	-314.18	-371.06	40°07'53.762"N	104°38'27.247"W	0.09	



Actual Wellpath Report

WEICHEL 26N-15HZ AWP

Page 3 of 6



REFERENCE WELLPATH IDENTIFICATION

Operator	KERR-MCGEE OIL & GAS ONSHORE LP	Slot	SLOT#31 WEICHEL 26N-15HZ (399'FSL & 295'FWL, SEC.14)
Area	COLORADO	Well	WEICHEL 26N-15HZ
Field	WELD COUNTY (KERR MCGEE)	Wellbore	WEICHEL 26N-15HZ AWB
Facility	SEC.14-T2N-R65W		

WELLPATH DATA (143 stations)

MD [ft]	Inclination [°]	Azimuth [°]	TVD [ft]	Vert Sect [ft]	North [ft]	East [ft]	Latitude	Longitude	DLS [°/100ft]	Comments
4165.00	8.890	227.030	4123.17	-289.14	-324.20	-381.89	40°07'53.663"N	104°38'27.387"W	0.30	
4260.00	6.980	228.530	4217.26	-297.07	-333.03	-391.58	40°07'53.576"N	104°38'27.511"W	2.02	
4355.00	5.500	224.360	4311.69	-303.46	-340.10	-399.09	40°07'53.506"N	104°38'27.608"W	1.63	
4450.00	3.620	219.500	4406.39	-308.55	-345.67	-404.18	40°07'53.451"N	104°38'27.674"W	2.02	
4545.00	1.600	235.160	4501.29	-311.35	-348.75	-407.18	40°07'53.421"N	104°38'27.712"W	2.24	
4640.00	0.400	117.420	4596.27	-312.19	-349.66	-407.97	40°07'53.412"N	104°38'27.722"W	1.92	
4735.00	0.560	75.520	4691.27	-312.29	-349.69	-407.23	40°07'53.411"N	104°38'27.713"W	0.39	
4829.00	0.670	61.100	4785.27	-311.99	-349.31	-406.30	40°07'53.415"N	104°38'27.701"W	0.20	
4924.00	1.520	42.110	4880.25	-310.91	-348.11	-404.97	40°07'53.427"N	104°38'27.684"W	0.96	
5019.00	0.600	27.280	4975.23	-309.63	-346.73	-403.90	40°07'53.441"N	104°38'27.670"W	1.00	
5114.00	0.580	22.850	5070.23	-308.79	-345.85	-403.49	40°07'53.449"N	104°38'27.665"W	0.05	
5209.00	0.780	27.970	5165.22	-307.82	-344.83	-403.00	40°07'53.459"N	104°38'27.658"W	0.22	
5303.00	0.950	20.300	5259.21	-306.58	-343.54	-402.43	40°07'53.472"N	104°38'27.651"W	0.22	
5398.00	0.030	21.450	5354.20	-305.85	-342.78	-402.14	40°07'53.480"N	104°38'27.647"W	0.97	
5493.00	0.060	96.820	5449.20	-305.84	-342.76	-402.08	40°07'53.480"N	104°38'27.647"W	0.06	
5588.00	0.170	45.820	5544.20	-305.76	-342.67	-401.93	40°07'53.481"N	104°38'27.645"W	0.15	
5683.00	0.310	54.760	5639.20	-305.54	-342.42	-401.62	40°07'53.483"N	104°38'27.641"W	0.15	
5777.00	0.550	16.270	5733.20	-304.99	-341.84	-401.29	40°07'53.489"N	104°38'27.636"W	0.39	
5872.00	0.680	28.180	5828.19	-304.09	-340.90	-400.89	40°07'53.498"N	104°38'27.631"W	0.19	
5967.00	0.700	357.000	5923.19	-303.04	-339.83	-400.66	40°07'53.509"N	104°38'27.628"W	0.39	
6062.00	0.760	359.760	6018.18	-301.84	-338.62	-400.69	40°07'53.521"N	104°38'27.629"W	0.07	
6156.00	0.660	239.220	6112.18	-301.45	-338.27	-401.16	40°07'53.524"N	104°38'27.635"W	1.31	
6252.00	0.460	232.760	6208.17	-301.89	-338.79	-401.94	40°07'53.519"N	104°38'27.645"W	0.22	
6307.00	0.300	195.800	6263.17	-302.15	-339.06	-402.16	40°07'53.516"N	104°38'27.648"W	0.52	
6347.00	0.220	232.070	6303.17	-302.29	-339.21	-402.25	40°07'53.515"N	104°38'27.649"W	0.45	
6379.00	2.000	349.940	6335.16	-301.76	-338.70	-402.39	40°07'53.520"N	104°38'27.651"W	6.60	
6410.00	5.770	352.230	6366.09	-299.67	-336.62	-402.70	40°07'53.540"N	104°38'27.654"W	12.17	
6442.00	9.270	353.310	6397.81	-295.48	-332.46	-403.21	40°07'53.582"N	104°38'27.661"W	10.95	
6473.00	12.740	353.200	6428.23	-289.57	-326.59	-403.91	40°07'53.640"N	104°38'27.670"W	11.19	
6505.00	14.660	355.070	6459.32	-281.99	-319.05	-404.68	40°07'53.714"N	104°38'27.680"W	6.16	
6537.00	17.960	353.810	6490.03	-273.01	-310.11	-405.56	40°07'53.802"N	104°38'27.691"W	10.37	
6568.00	20.960	353.110	6519.26	-262.68	-299.85	-406.74	40°07'53.904"N	104°38'27.706"W	9.71	
6600.00	24.390	353.190	6548.78	-250.36	-287.60	-408.21	40°07'54.025"N	104°38'27.725"W	10.72	
6632.00	27.480	355.830	6577.55	-236.37	-273.68	-409.53	40°07'54.162"N	104°38'27.742"W	10.31	
6663.00	31.360	356.040	6604.55	-221.14	-258.49	-410.61	40°07'54.313"N	104°38'27.756"W	12.52	
6695.00	35.270	357.200	6631.29	-203.58	-240.95	-411.63	40°07'54.486"N	104°38'27.770"W	12.38	
6727.00	38.130	0.440	6656.94	-184.51	-221.84	-412.01	40°07'54.675"N	104°38'27.774"W	10.79	
6758.00	40.160	2.540	6680.98	-165.07	-202.28	-411.49	40°07'54.868"N	104°38'27.768"W	7.82	
6790.00	42.440	2.530	6705.02	-144.14	-181.18	-410.56	40°07'55.077"N	104°38'27.756"W	7.13	
6821.00	45.960	3.040	6727.24	-122.73	-159.59	-409.51	40°07'55.290"N	104°38'27.742"W	11.41	
6853.00	48.190	3.300	6749.04	-99.55	-136.20	-408.21	40°07'55.521"N	104°38'27.725"W	6.99	
6885.00	48.560	3.500	6770.29	-75.89	-112.32	-406.79	40°07'55.757"N	104°38'27.707"W	1.25	
6916.00	50.050	3.170	6790.50	-52.64	-88.86	-405.42	40°07'55.989"N	104°38'27.690"W	4.87	
6961.00	54.880	2.420	6817.91	-17.30	-53.23	-403.69	40°07'56.341"N	104°38'27.667"W	10.81	
7011.00	61.510	1.790	6844.25	24.84	-10.79	-402.14	40°07'56.760"N	104°38'27.647"W	13.30	



Actual Wellpath Report

WEICHEL 26N-15HZ AWP

Page 4 of 6



REFERENCE WELLPATH IDENTIFICATION

Operator	KERR-MCGEE OIL & GAS ONSHORE LP	Slot	SLOT#31 WEICHEL 26N-15HZ (399'FSL & 295'FWL, SEC.14)
Area	COLORADO	Well	WEICHEL 26N-15HZ
Field	WELD COUNTY (KERR MCGEE)	Wellbore	WEICHEL 26N-15HZ AWB
Facility	SEC.14-T2N-R65W		

WELLPATH DATA (143 stations) † = interpolated/extrapolated station

MD [ft]	Inclination [°]	Azimuth [°]	TVD [ft]	Vert Sect [ft]	North [ft]	East [ft]	Latitude	Longitude	DLS [°/100ft]	Comments
7056.00	66.340	0.900	6864.02	64.99	29.61	-401.20	40°07'57.160"N	104°38'27.635"W	10.88	
7106.00	69.320	1.280	6882.89	111.02	75.90	-400.32	40°07'57.617"N	104°38'27.624"W	6.00	
7151.00	70.990	1.520	6898.17	153.08	118.21	-399.28	40°07'58.035"N	104°38'27.611"W	3.74	
7201.00	71.620	1.230	6914.19	200.14	165.56	-398.14	40°07'58.503"N	104°38'27.596"W	1.37	
7246.00	76.160	0.850	6926.68	243.12	208.77	-397.36	40°07'58.930"N	104°38'27.586"W	10.12	
7296.00	81.450	0.830	6936.38	291.89	257.80	-396.64	40°07'59.415"N	104°38'27.577"W	10.58	
7354.00	85.140	0.180	6943.15	349.21	315.39	-396.14	40°07'59.984"N	104°38'27.570"W	6.46	
7398.00†	86.471	0.481	6946.37	392.89	359.27	-395.88	40°08'00.417"N	104°38'27.567"W	3.10	7" Casing Point
7436.00	87.620	0.740	6948.33	430.65	397.22	-395.48	40°08'00.792"N	104°38'27.562"W	3.10	
7465.00	87.690	0.510	6949.51	459.49	426.19	-395.16	40°08'01.079"N	104°38'27.558"W	0.83	
7560.00	88.450	1.640	6952.71	553.88	521.12	-393.38	40°08'02.017"N	104°38'27.535"W	1.43	
7655.00	87.990	1.650	6955.66	648.18	616.03	-390.66	40°08'02.955"N	104°38'27.500"W	0.48	
7750.00	88.080	0.800	6958.92	742.55	710.96	-388.63	40°08'03.893"N	104°38'27.474"W	0.90	
7845.00	89.590	0.940	6960.85	837.02	805.92	-387.18	40°08'04.831"N	104°38'27.455"W	1.60	
7939.00	90.860	0.070	6960.48	930.57	899.91	-386.36	40°08'05.760"N	104°38'27.444"W	1.64	
8034.00	90.580	0.630	6959.29	1025.14	994.91	-385.77	40°08'06.699"N	104°38'27.437"W	0.66	
8129.00	90.740	359.900	6958.20	1119.72	1089.90	-385.34	40°08'07.637"N	104°38'27.431"W	0.79	
8224.00	90.890	359.680	6956.84	1214.37	1184.89	-385.68	40°08'08.576"N	104°38'27.436"W	0.28	
8319.00	91.350	359.740	6954.99	1309.02	1279.87	-386.16	40°08'09.515"N	104°38'27.442"W	0.49	
8414.00	91.360	359.590	6952.74	1403.67	1374.84	-386.72	40°08'10.453"N	104°38'27.449"W	0.16	
8508.00	91.130	359.140	6950.70	1497.36	1468.81	-387.76	40°08'11.382"N	104°38'27.463"W	0.54	
8603.00	91.040	358.790	6948.90	1592.11	1563.78	-389.48	40°08'12.320"N	104°38'27.485"W	0.38	
8698.00	91.160	0.590	6947.08	1686.76	1658.76	-389.99	40°08'13.259"N	104°38'27.491"W	1.90	
8793.00	91.130	0.330	6945.18	1781.29	1753.73	-389.23	40°08'14.198"N	104°38'27.481"W	0.28	
8888.00	91.690	0.200	6942.84	1875.85	1848.70	-388.79	40°08'15.136"N	104°38'27.476"W	0.61	
8983.00	91.810	0.130	6939.94	1970.41	1943.66	-388.52	40°08'16.074"N	104°38'27.472"W	0.15	
9077.00	91.070	0.760	6937.58	2063.95	2037.62	-387.79	40°08'17.003"N	104°38'27.463"W	1.03	
9172.00	90.000	1.390	6936.69	2158.39	2132.60	-386.00	40°08'17.942"N	104°38'27.440"W	1.31	
9267.00	90.580	0.490	6936.21	2252.87	2227.59	-384.45	40°08'18.880"N	104°38'27.420"W	1.13	
9362.00	90.400	1.420	6935.40	2347.34	2322.57	-382.86	40°08'19.819"N	104°38'27.400"W	1.00	
9457.00	89.350	1.330	6935.60	2441.73	2417.54	-380.58	40°08'20.757"N	104°38'27.370"W	1.11	
9552.00	89.160	0.990	6936.84	2536.16	2512.51	-378.66	40°08'21.696"N	104°38'27.346"W	0.41	
9646.00	89.440	1.430	6937.99	2629.59	2606.48	-376.67	40°08'22.624"N	104°38'27.320"W	0.55	
9741.00	88.670	359.680	6939.55	2724.11	2701.46	-375.75	40°08'23.563"N	104°38'27.308"W	2.01	
9836.00	90.060	0.370	6940.61	2818.73	2796.45	-375.71	40°08'24.502"N	104°38'27.308"W	1.63	
9931.00	90.180	0.950	6940.41	2913.25	2891.45	-374.62	40°08'25.441"N	104°38'27.294"W	0.62	
10026.00	89.960	1.410	6940.29	3007.69	2986.43	-372.66	40°08'26.379"N	104°38'27.268"W	0.54	
10120.00	88.640	0.450	6941.44	3101.16	3080.40	-371.14	40°08'27.308"N	104°38'27.249"W	1.74	
10215.00	89.130	359.210	6943.29	3195.79	3175.38	-371.42	40°08'28.246"N	104°38'27.252"W	1.40	
10310.00	89.530	359.440	6944.40	3290.51	3270.37	-372.54	40°08'29.185"N	104°38'27.267"W	0.49	
10405.00	90.120	359.440	6944.69	3385.21	3365.36	-373.47	40°08'30.124"N	104°38'27.279"W	0.62	
10500.00	89.070	359.210	6945.36	3479.93	3460.35	-374.58	40°08'31.062"N	104°38'27.293"W	1.13	
10595.00	88.400	359.290	6947.46	3574.63	3555.32	-375.83	40°08'32.001"N	104°38'27.309"W	0.71	
10690.00	88.420	359.370	6950.09	3669.31	3650.28	-376.94	40°08'32.939"N	104°38'27.324"W	0.09	
10784.00	88.060	359.290	6952.98	3762.99	3744.23	-378.04	40°08'33.868"N	104°38'27.338"W	0.39	



Actual Wellpath Report

WEICHEL 26N-15HZ AWP

Page 5 of 6



REFERENCE WELLPATH IDENTIFICATION

Operator	KERR-MCGEE OIL & GAS ONSHORE LP	Slot	SLOT#31 WEICHEL 26N-15HZ (399'FSL & 295'FWL, SEC.14)
Area	COLORADO	Well	WEICHEL 26N-15HZ
Field	WELD COUNTY (KERR MCGEE)	Wellbore	WEICHEL 26N-15HZ AWB
Facility	SEC.14-T2N-R65W		

WELLPATH DATA (143 stations)

MD [ft]	Inclination [°]	Azimuth [°]	TVD [ft]	Vert Sect [ft]	North [ft]	East [ft]	Latitude	Longitude	DLS [°/100ft]	Comments
10879.00	87.960	359.130	6956.28	3857.67	3839.16	-379.35	40°08'34.806"N	104°38'27.355"W	0.20	
10974.00	88.790	359.450	6958.97	3952.35	3934.11	-380.52	40°08'35.744"N	104°38'27.370"W	0.94	
11069.00	88.700	358.890	6961.06	4047.07	4029.08	-381.90	40°08'36.683"N	104°38'27.388"W	0.60	
11164.00	88.920	358.360	6963.03	4141.85	4124.03	-384.18	40°08'37.621"N	104°38'27.417"W	0.60	
11259.00	89.130	358.350	6964.64	4236.67	4218.98	-386.90	40°08'38.559"N	104°38'27.452"W	0.22	
11354.00	89.220	358.360	6966.01	4331.49	4313.93	-389.63	40°08'39.498"N	104°38'27.487"W	0.10	
11404.00	89.290	358.260	6966.66	4381.40	4363.91	-391.11	40°08'39.991"N	104°38'27.506"W	0.24	Last BHI MWD+IFR Surveys
11463.00	89.290	358.260	6967.39	4440.29	4422.87	-392.90	40°08'40.574"N	104°38'27.529"W	0.00	Projection to Bit

HOLE & CASING SECTIONS - Ref Wellbore: WEICHEL 26N-15HZ AWB Ref Wellpath: WEICHEL 26N-15HZ AWP

String/Diameter	Start MD [ft]	End MD [ft]	Interval [ft]	Start TVD [ft]	End TVD [ft]	Start N/S [ft]	Start E/W [ft]	End N/S [ft]	End E/W [ft]
13.5in Open Hole	13.00	933.00	920.00	13.00	932.98	0.00	0.00	-5.46	0.01
9.625in Casing Surface	13.00	933.00	920.00	13.00	932.98	0.00	0.00	-5.46	0.01
8.75in Open Hole	933.00	7408.00	6475.00	932.98	6946.96	-5.46	0.01	369.25	-395.79
7in Casing Intermediate	13.00	7398.00	7385.00	13.00	6946.37	0.00	0.00	359.27	-395.88
6.125in Open Hole	7398.00	11463.00	4065.00	6946.37	6967.39	359.27	-395.88	4422.87	-392.90

TARGETS

Name	MD [ft]	TVD [ft]	North [ft]	East [ft]	Grid East [US ft]	Grid North [US ft]	Latitude	Longitude	Shape
WEICHEL 3 PAD SECTION 14 LINES		10.00	87.11	4603.11	3245181.02	1292398.97	40°07'57.724"N	104°37'23.207"W	polygon
WEICHEL 26N-15HZ BHL ON PLAT (460'FNL & 105'FEL, SEC.15) REV-1		6935.00	4448.76	-376.33	3240159.71	1296711.92	40°08'40.830"N	104°38'27.316"W	point
WEICHEL 13-14HZ PAD SEC. 14 HARDLINES (460' SETBACKS)		7500.00	0.00	0.00	3240579.17	1292267.21	40°07'56.867"N	104°38'22.470"W	polygon

WELLPATH COMPOSITION - Ref Wellbore: WEICHEL 26N-15HZ AWB Ref Wellpath: WEICHEL 26N-15HZ AWP

Start MD [ft]	End MD [ft]	Positional Uncertainty Model	Log Name/Comment	Wellbore
13.00	893.00	Generic gyro - continuous (Standard)	GYRODATA SURVEYS <113-893>	WEICHEL 26N-15HZ AWB
893.00	7354.00	NaviTrak (MAGCORR,IFR)	BHI MWD+IFR SURVEYS 8 3/4" HOLE <973-7354>	WEICHEL 26N-15HZ AWB
7354.00	11404.00	OnTrak (MAGCORR,IFR)	BHI MWD+IFR SURVEYS 6 1/8" HOLE <7436-11404>	WEICHEL 26N-15HZ AWB
11404.00	11463.00	Blind Drilling (std)	Projection to bit	WEICHEL 26N-15HZ AWB



Actual Wellpath Report

WEICHEL 26N-15HZ AWP

Page 6 of 6



REFERENCE WELLPATH IDENTIFICATION

Operator	KERR-MCGEE OIL & GAS ONSHORE LP	Slot	SLOT#31 WEICHEL 26N-15HZ (399'FSL & 295'FWL, SEC.14)
Area	COLORADO	Well	WEICHEL 26N-15HZ
Field	WELD COUNTY (KERR MCGEE)	Wellbore	WEICHEL 26N-15HZ AWB
Facility	SEC.14-T2N-R65W		

WELLPATH COMMENTS

MD [ft]	Inclination [°]	Azimuth [°]	TVD [ft]	Comment
13.00	0.000	179.030	13.00	Tie-On
113.00	0.470	179.030	113.00	Begin GYRO Surveys
893.00	0.200	107.190	892.98	Tie-Into GYRO Surveys
973.00	0.240	250.620	972.98	Begin BHI MWD+IFR Surveys
7398.00	86.471	0.481	6946.37	7" Casing Point
11404.00	89.290	358.260	6966.66	Last BHI MWD+IFR Surveys
11463.00	89.290	358.260	6967.39	Projection to Bit