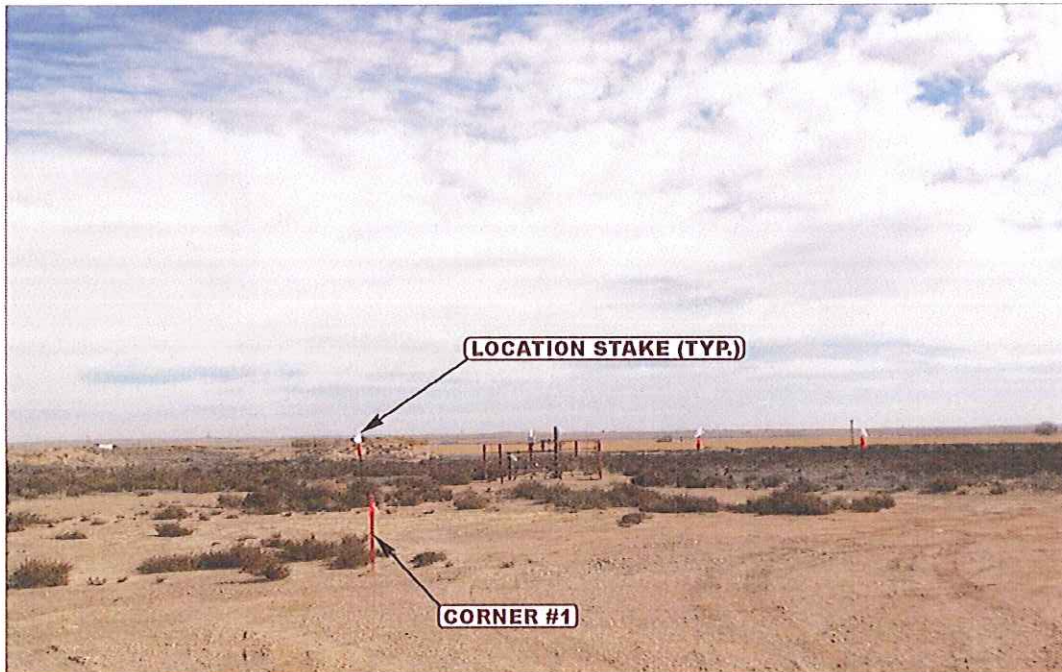


**GREAT WESTERN OIL & GAS COMPANY**  
**NEW CACHE FH #8-37D, #8-38D, #8-39D & #8-40D**  
**LOCATED IN WELD COUNTY, COLORADO**  
**SECTION 8, T6N, R63W, 6th P.M.**



**PHOTO: VIEW FROM CORNER #1 TO LOCATION STAKES**

**CAMERA ANGLE: EASTERLY**



**PHOTO: VIEW FOF EXISTING ACCESS**

**CAMERA ANGLE: EASTERLY**



**U** **E** **L** **S** **Uintah Engineering & Land Surveying**  
85 South 200 East Vernal, Utah 84078  
(435) 789-1017 \* FAX (435) 789-1813

**LOCATION PHOTOS**

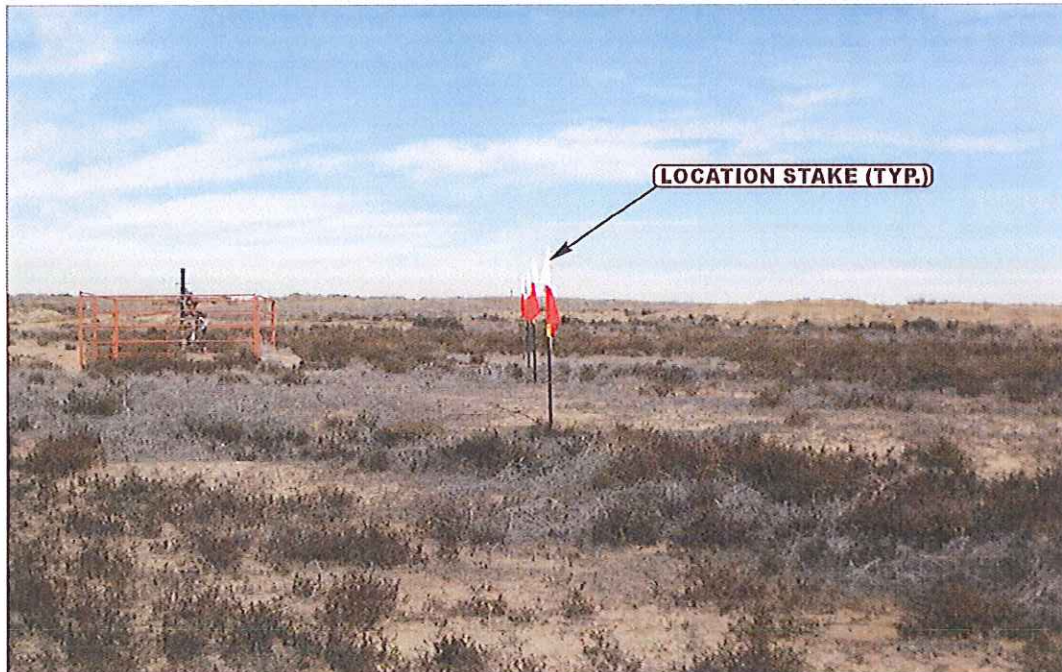
**10** **23** **12**  
MONTH DAY YEAR

TAKEN BY: D.N. DRAWN BY: B.D.H. REVISED: 00-00-00

**PHOTO**  
**P1**



**GREAT WESTERN OIL & GAS COMPANY**  
**NEW CACHE FH #8-37D, #8-38D, #8-39D & #8-40D**  
**LOCATED IN WELD COUNTY, COLORADO**  
**SECTION 8, T6N, R63W, 6th P.M.**



**PHOTO: VIEW OF LOCATION STAKES**

**CAMERA ANGLE: NORTHERLY**



**PHOTO: VIEW OF LOCATION STAKES**

**CAMERA ANGLE: EASTERLY**



**UELS**

Uintah Engineering & Land Surveying  
85 South 200 East Vernal, Utah 84078  
(435) 789-1017 \* FAX (435) 789-1813

**LOCATION PHOTOS**

**10** **23** **12**  
MONTH DAY YEAR

TAKEN BY: D.N. | DRAWN BY: B.D.H. | REVISED: 00-00-00

**PHOTO**  
**P2**



**GREAT WESTERN OIL & GAS COMPANY**  
**NEW CACHE FH #8-37D, #8-38D, #8-39D & #8-40D**  
**LOCATED IN WELD COUNTY, COLORADO**  
**SECTION 8, T6N, R63W, 6th P.M.**



**PHOTO: VIEW OF LOCATION STAKES**

**CAMERA ANGLE: SOUTHERLY**



**PHOTO: VIEW OF LOCATION STAKES**

**CAMERA ANGLE: WESTERLY**



**UELS** Uintah Engineering & Land Surveying  
85 South 200 East Vernal, Utah 84078  
(435) 789-1017 \* FAX (435) 789-1813

**LOCATION PHOTOS**

**10** **23** **12**  
MONTH DAY YEAR

TAKEN BY: D.N. | DRAWN BY: B.D.H. | REVISED: 00-00-00

**PHOTO**  
**P3**