

# GREAT WESTERN OIL & GAS COMPANY

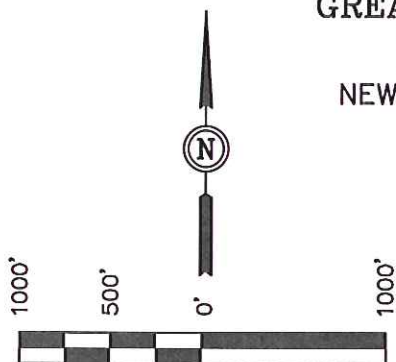
## TARGET BOTTOM HOLE DRAWING FOR

NEW CACHE FH #8-12D, #8-32D & #8-33D

SECTION 8, T6N, R63W, 6th P.M.

NW 1/4 SW 1/4

FIGURE #5

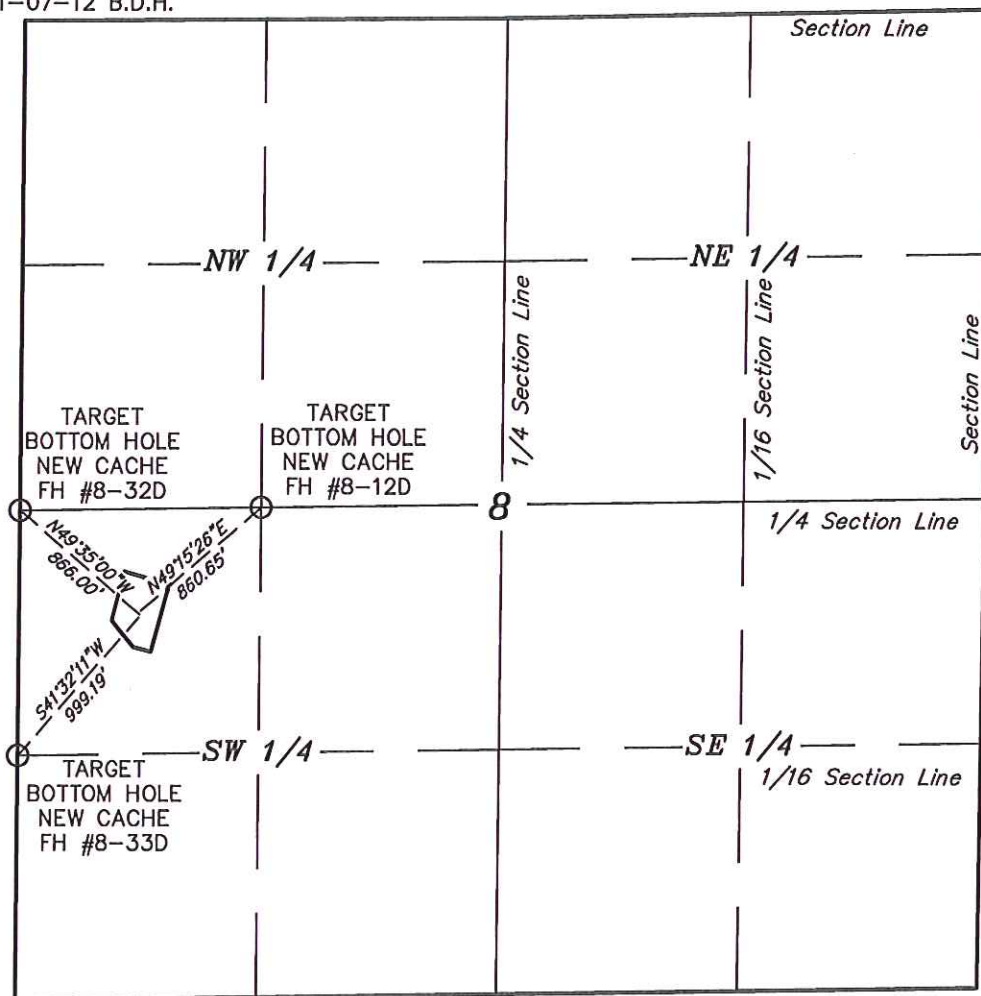


SCALE

DATE: 10-25-12

DRAWN BY: J.M.H.

REV: 11-07-12 B.D.H.



UINTAH ENGINEERING & LAND SURVEYING

85 So. 200 East \* Vernal, Utah 84078 \* (435) 789-1017