

LEGEND:

 PROPOSED LOCATION

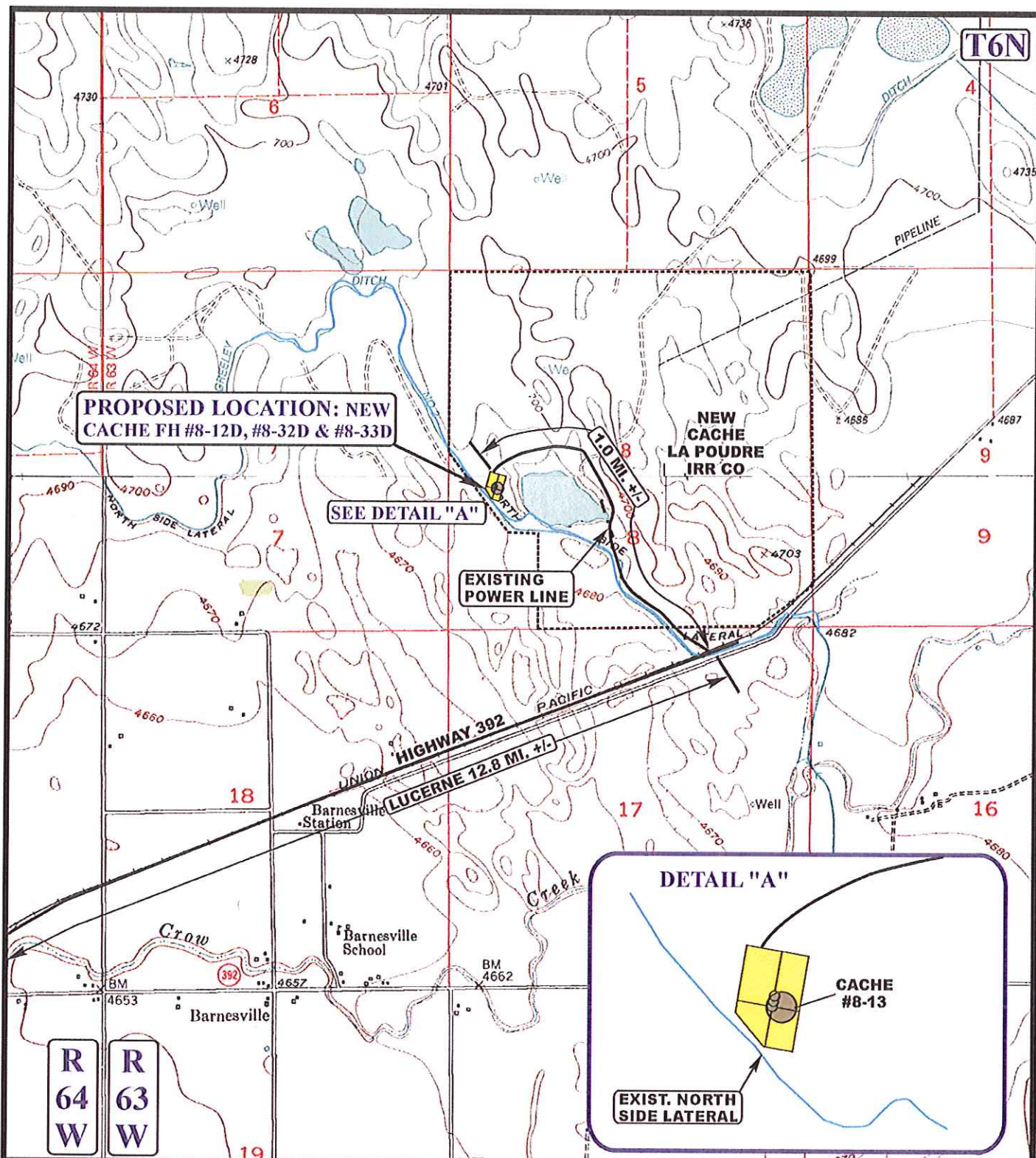
GREAT WESTERN OIL & GAS COMPANY

**NEW CACHE FH #8-12D, #8-32D & #8-33D
SECTION 8, T6N, R63W, 6th P.M.
NW 1/4 SW 1/4**

SCALE: 1:100,000	DRAWN BY: B.D.H.	REVISED: 11-07-12
------------------	------------------	-------------------



Utah Engineering & Land Surveying
85 South 200 East Vernal, Utah 84078
(435) 789-1017 * FAX (435) 789-1813



GREAT WESTERN OIL & GAS COMPANY
NEW CACHE FH #8-12D, #8-32D & #8-33D
SECTION 8, T6N, R63W, 6th P.M.

BEGINNING AT THE INTERSECTION OF WCR 39 & HIGHWAY 392 IN LUCERNE, COLORADO, PROCEED IN AN EASTERLY DIRECTION APPROXIMATELY 12.8 MILES TO AN EXISTING ROAD TO THE NORTHWEST; TURN LEFT AND PROCEED IN A NORTHWESTERLY, THEN SOUTHWESTERLY DIRECTION APPROXIMATELY 1.0 MILE TO THE PROPOSED LOCATION.

TOTAL DISTANCE FROM LUCERNE, COLORADO TO THE PROPOSED LOCATION IS APPROXIMATELY 13.8 MILES.