

<<< Fold Here >>>
All interpretations are opinions based on inferences from electrical or other measurements and we cannot and do not guarantee the accuracy or correctness of any interpretation, and we shall not, except in the case of gross or willful negligence on our part, be liable or responsible for any loss, costs, damages, or expenses incurred or sustained by anyone resulting from any interpretation made by any of our officers, agents or employees. These interpretations are also subject to our general terms and conditions set out in our current Price Schedule.
Comments
Tool ran to top of fluid level of 1104' No cement top was seen in log interval.



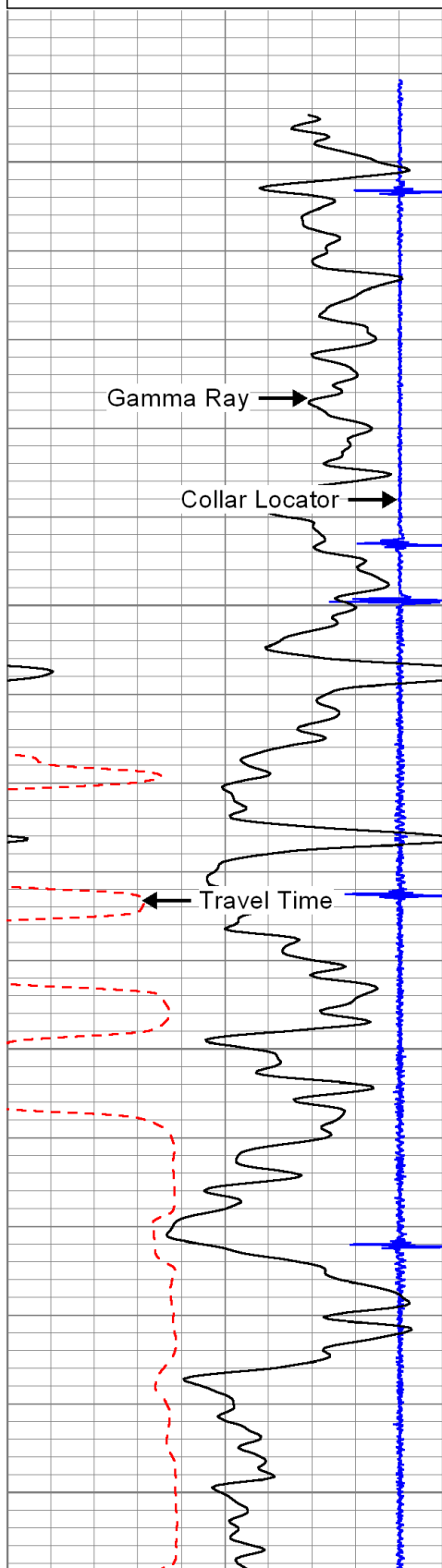
# SERVICES

Database File: 109036.db  
Dataset Pathname: pass4.3  
Presentation Format: cbl\_dr  
Dataset Creation: Wed Jun 01 11:27:20 2011 by Calc Open-Cased 090629  
Charted by: Depth in Feet scaled 1:240

450	Travel Time (usec)	300
9	Collar Locator	-1
0	Gamma Ray (GAPI)	150

0	Amplified Amplitude (mV)	10
0	Amplitude (mV)	100

200 Variable Density 1200



Gamma Ray →

Collar Locator →

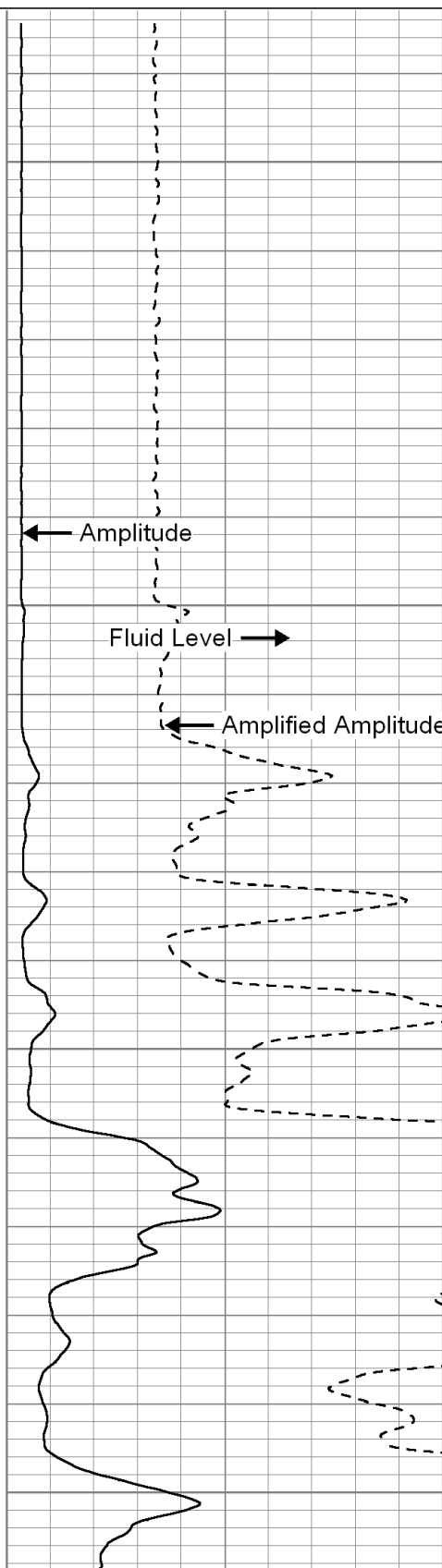
Travel Time →

1050

1100

1150

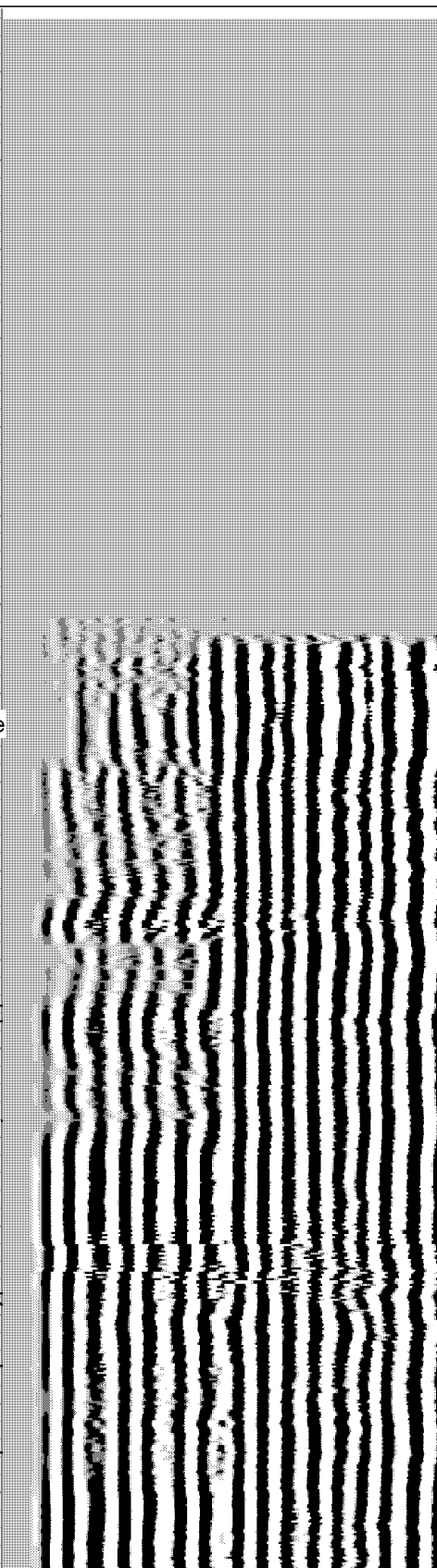
1200

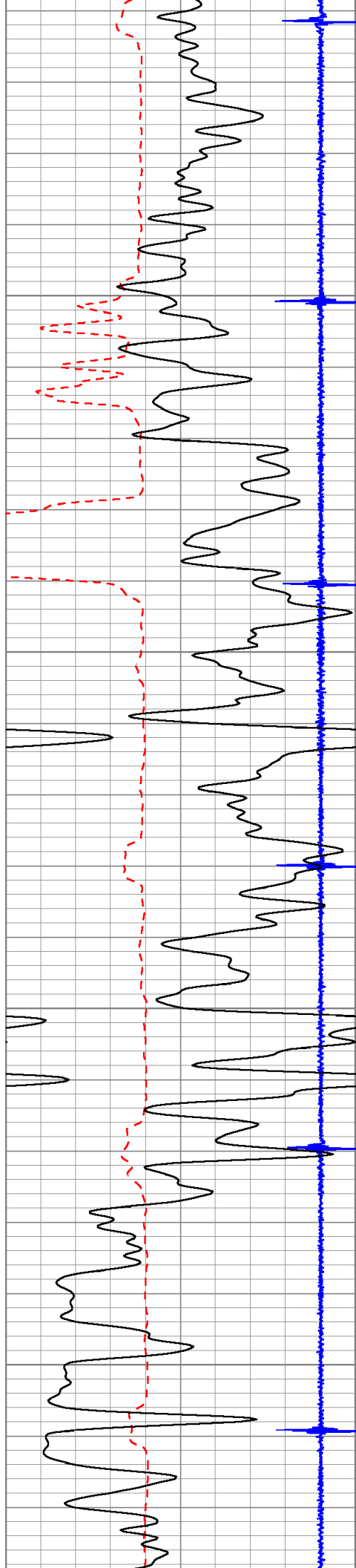


← Amplitude

Fluid Level →

← Amplified Amplitude



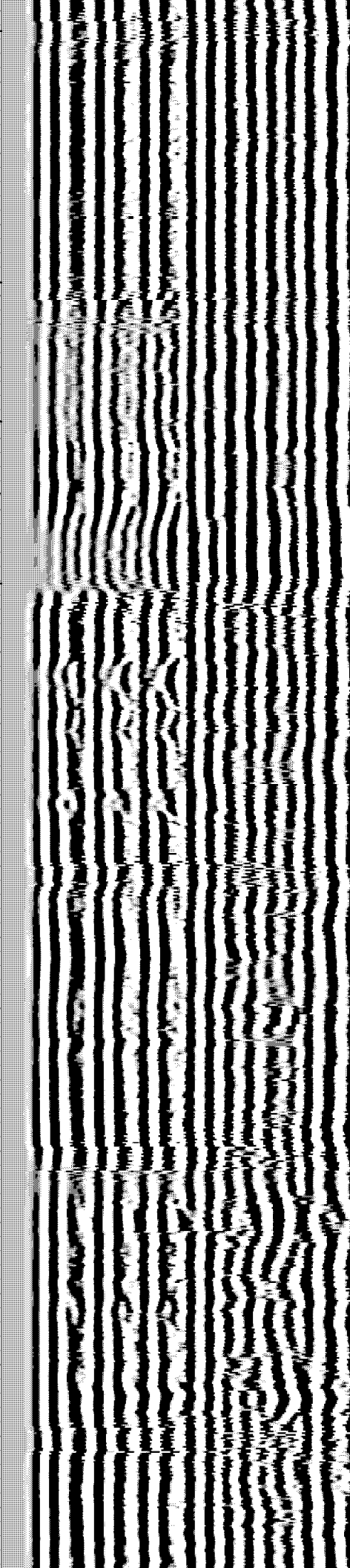
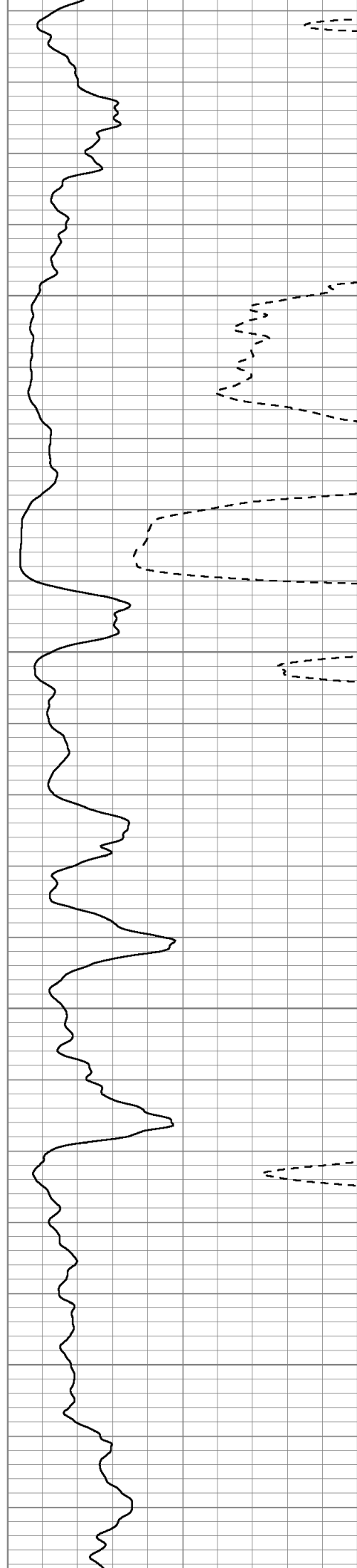


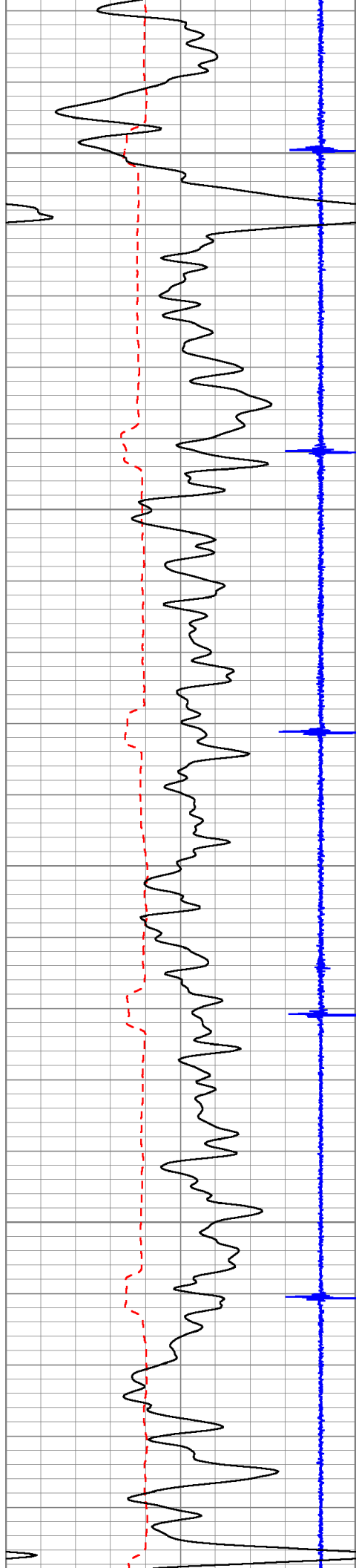
1250

1300

1350

1400



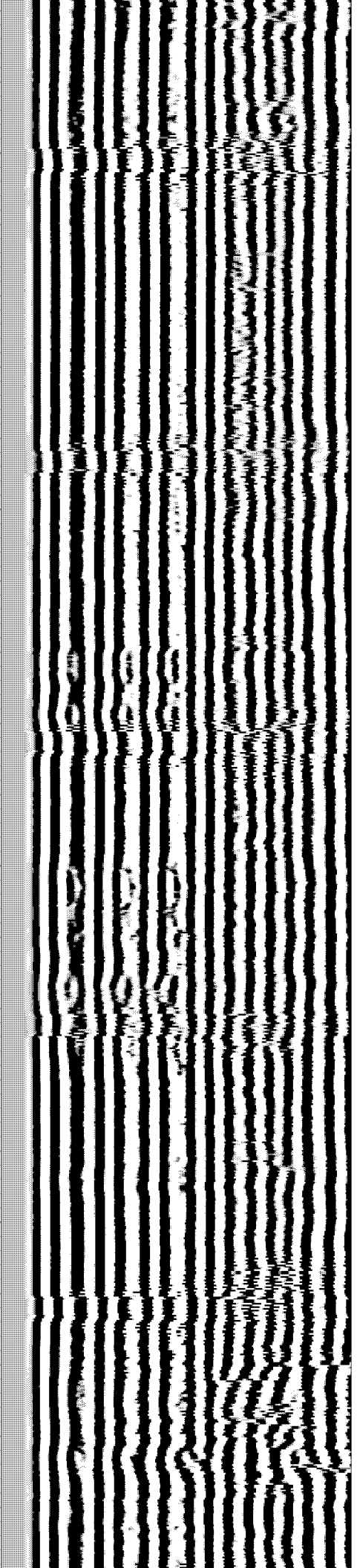
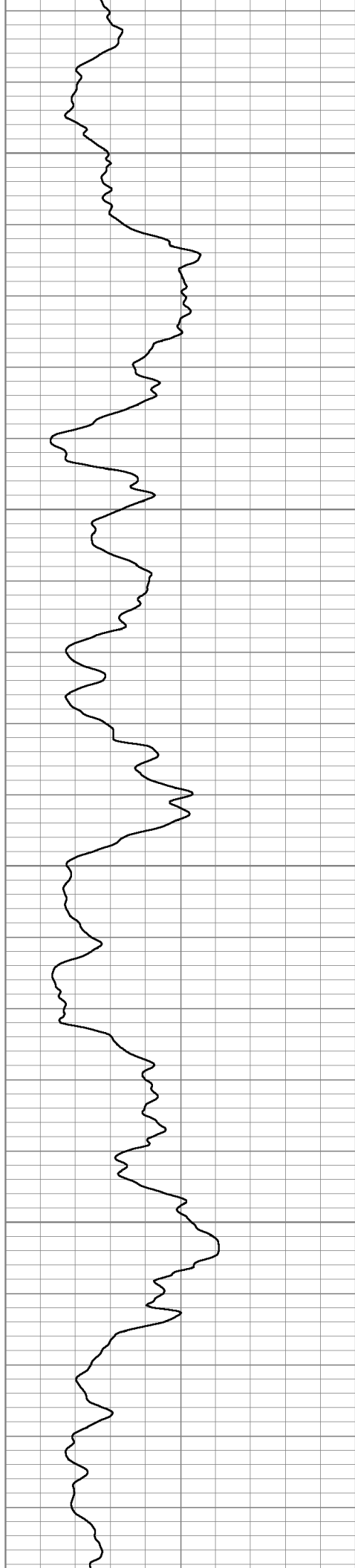


1450

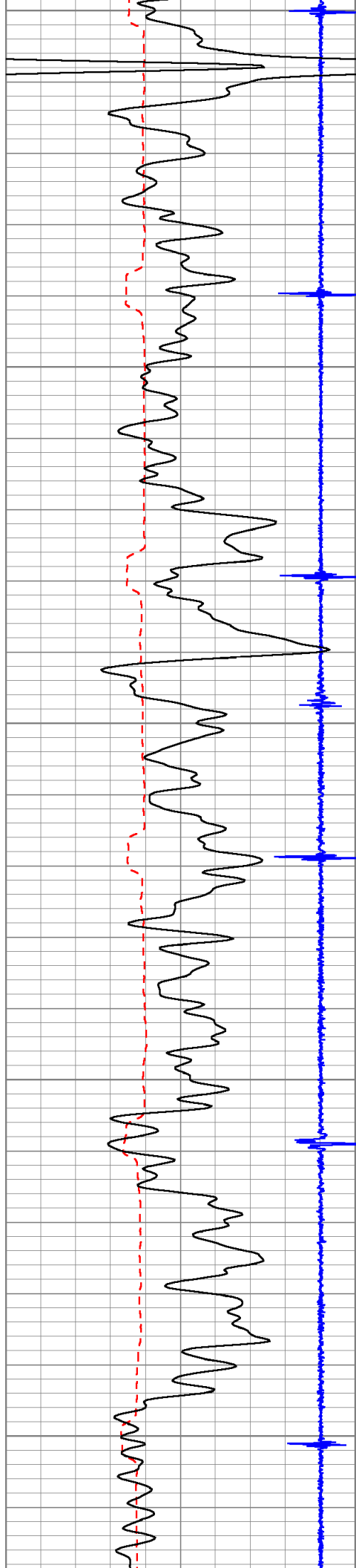
1500

1550

1600







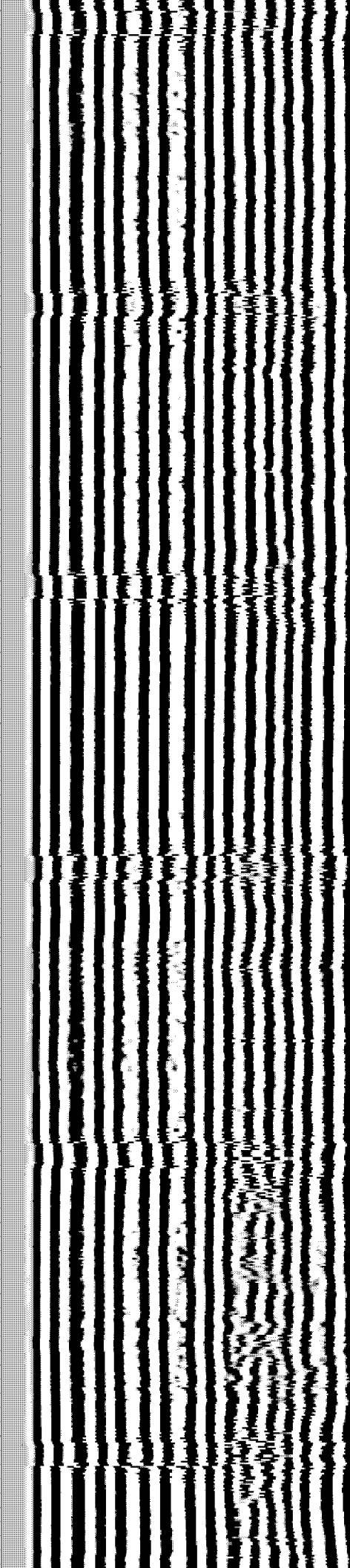
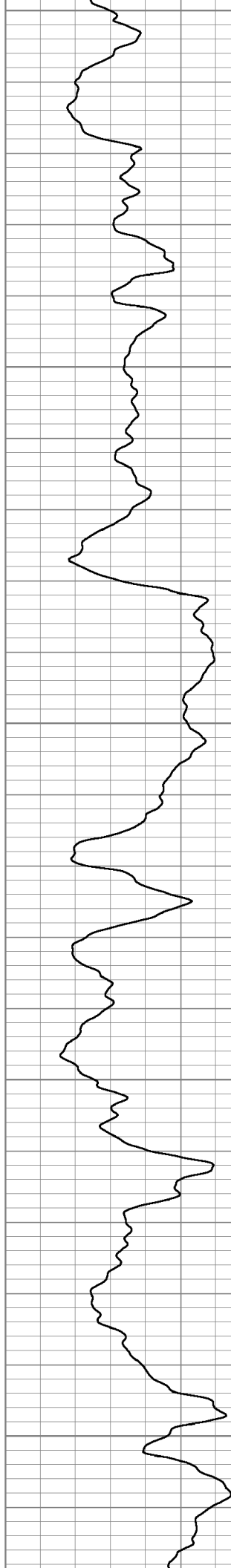
1650

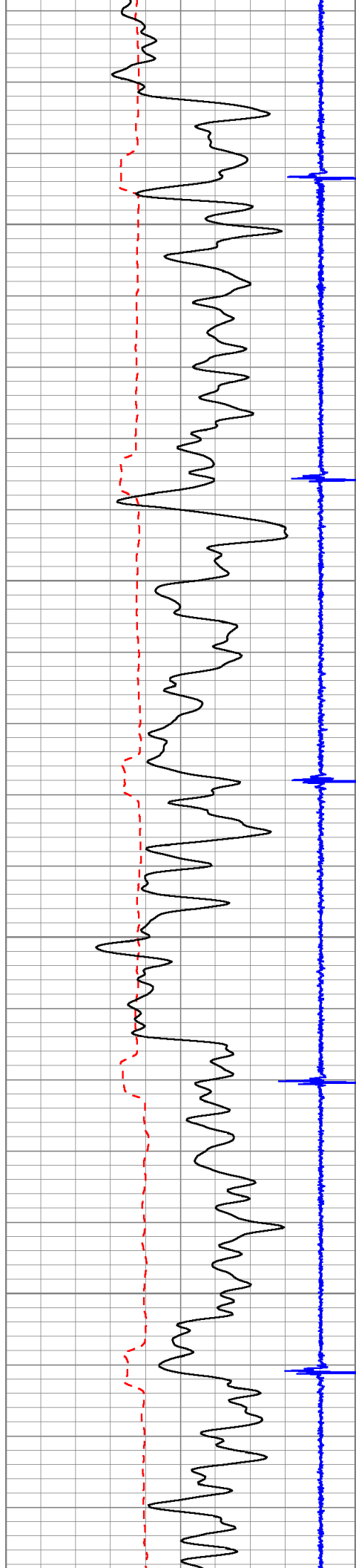
1700

1750

1800

1850



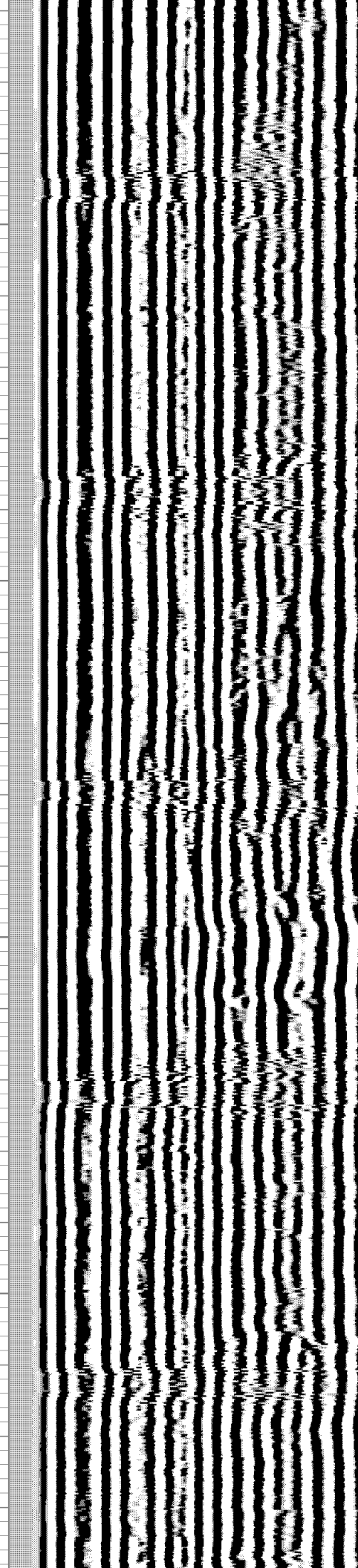
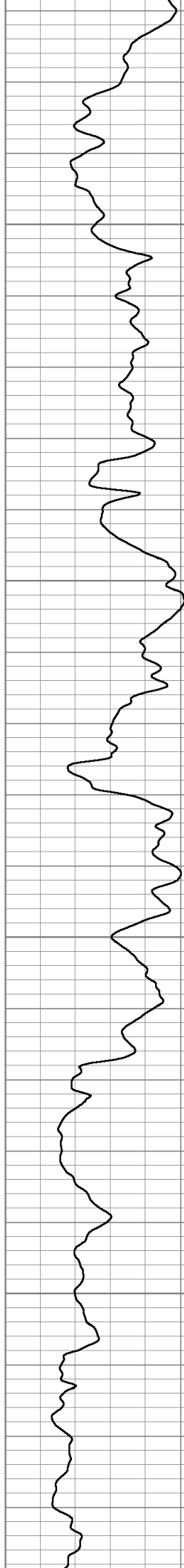


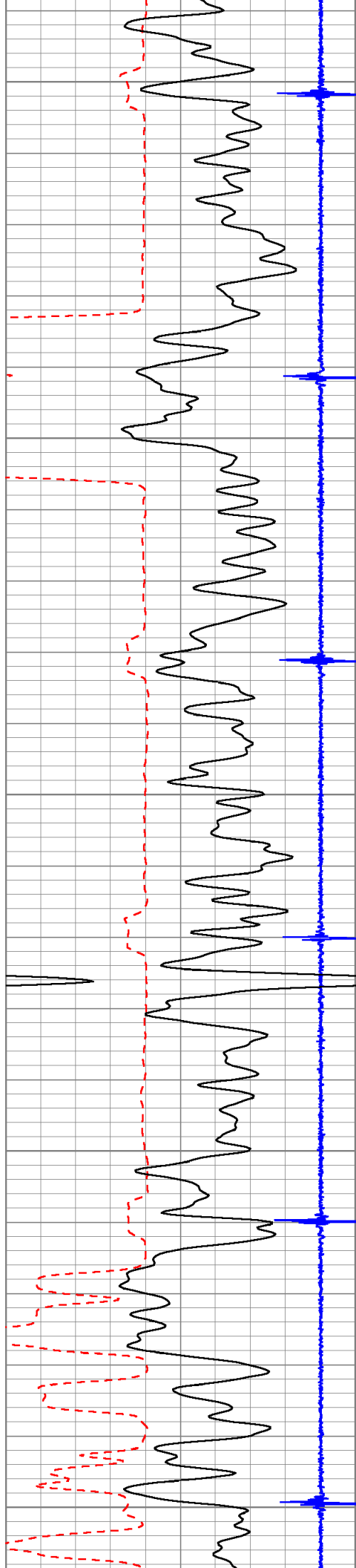
1900

1950

2000

2050





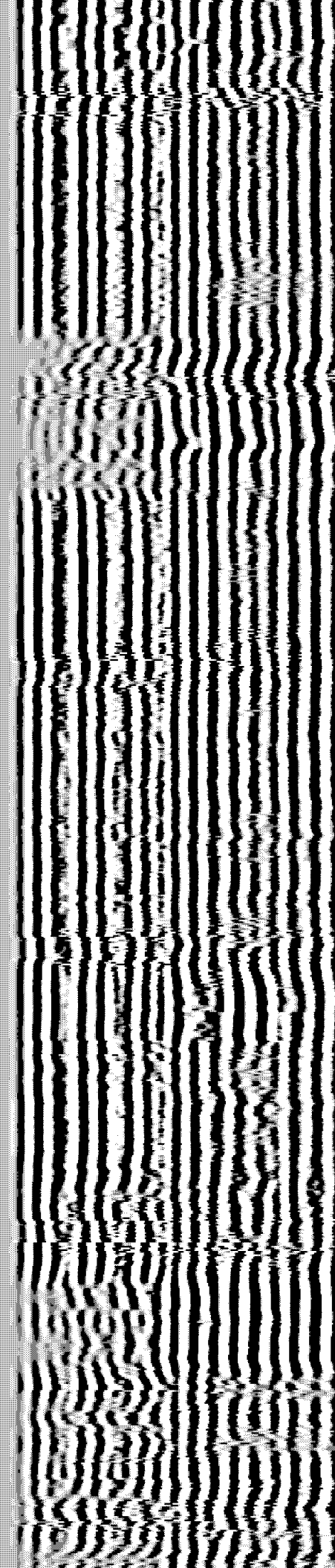
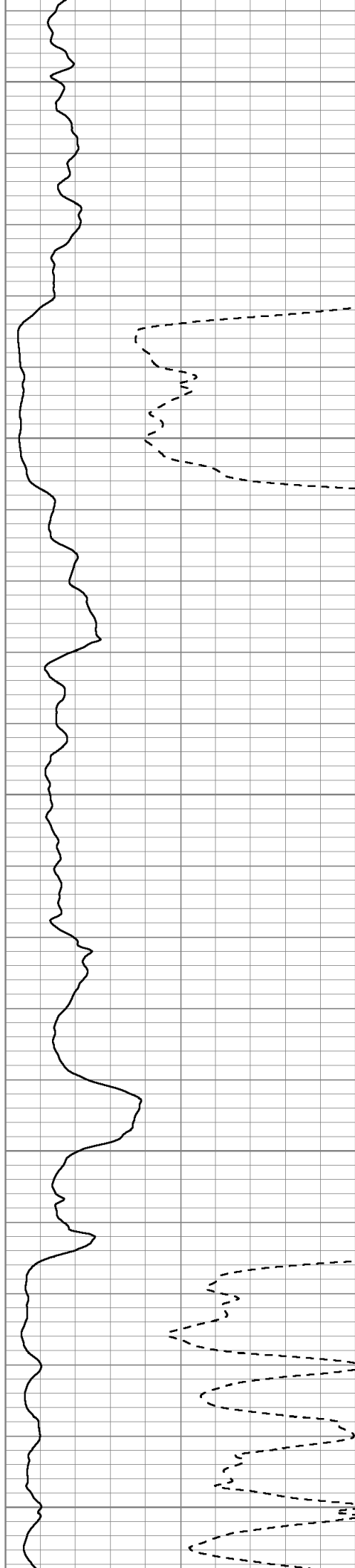
2100

2150

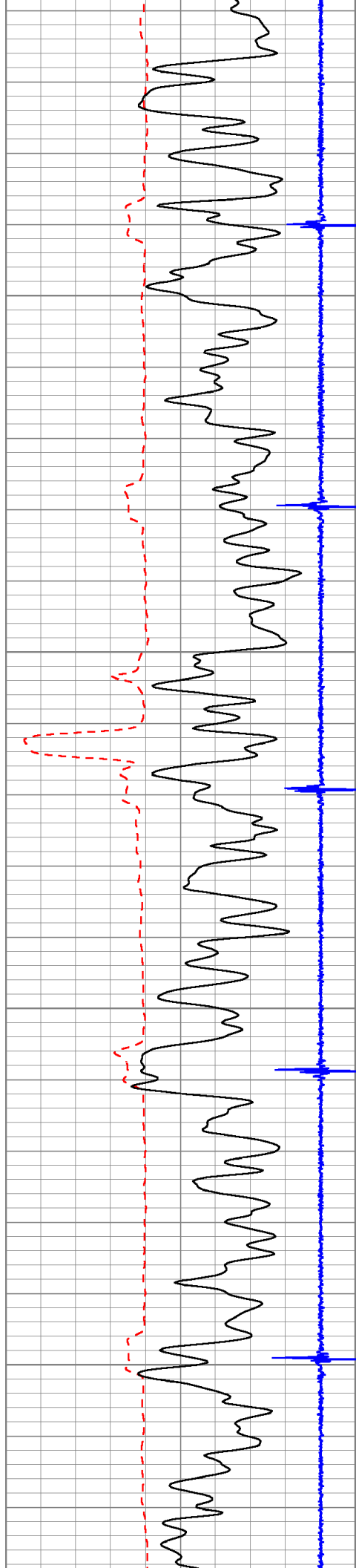
2200

2250

2300





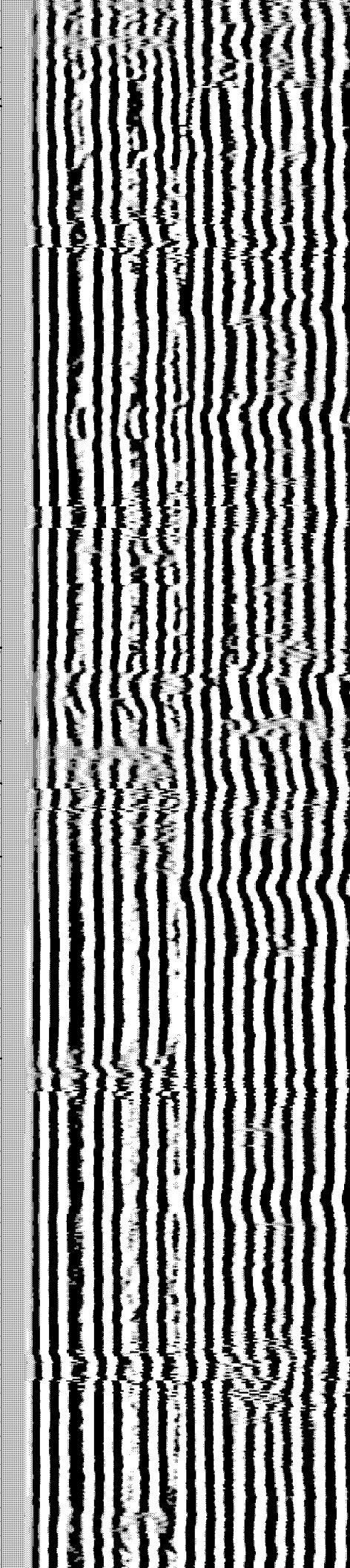
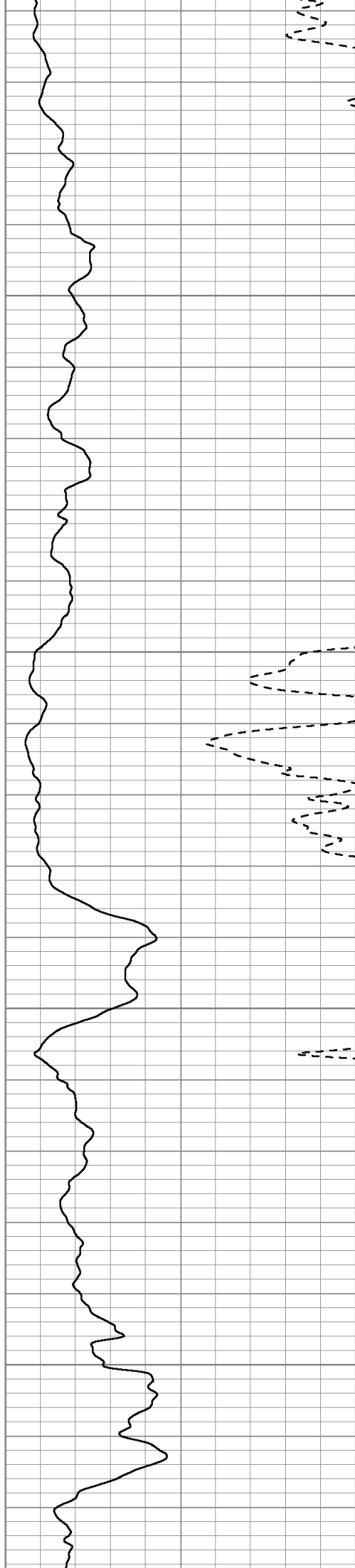


2350

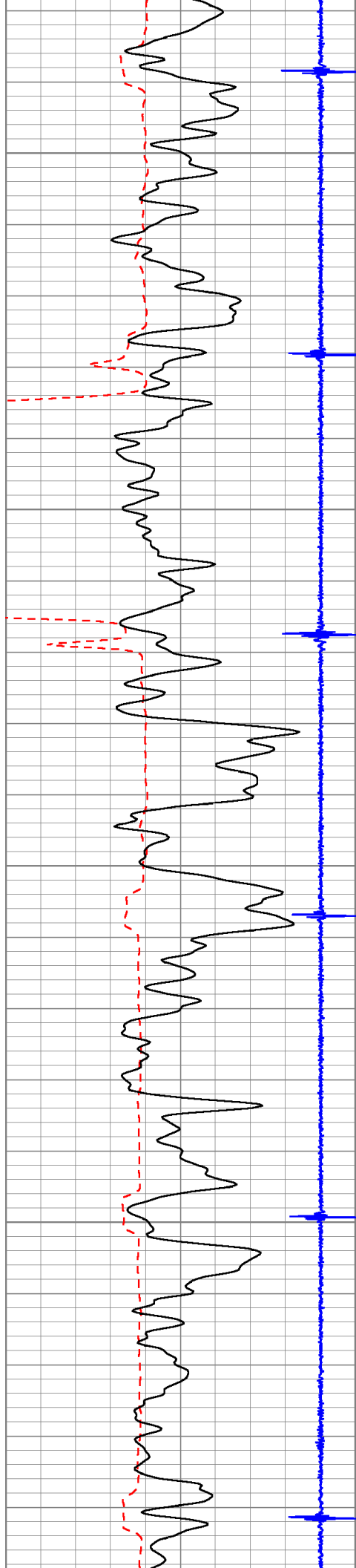
2400

2450

2500





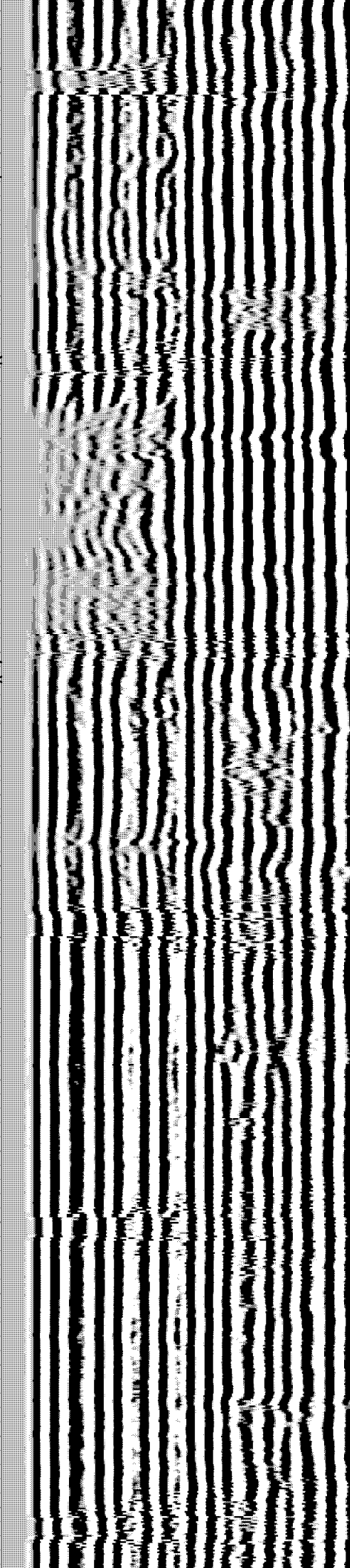
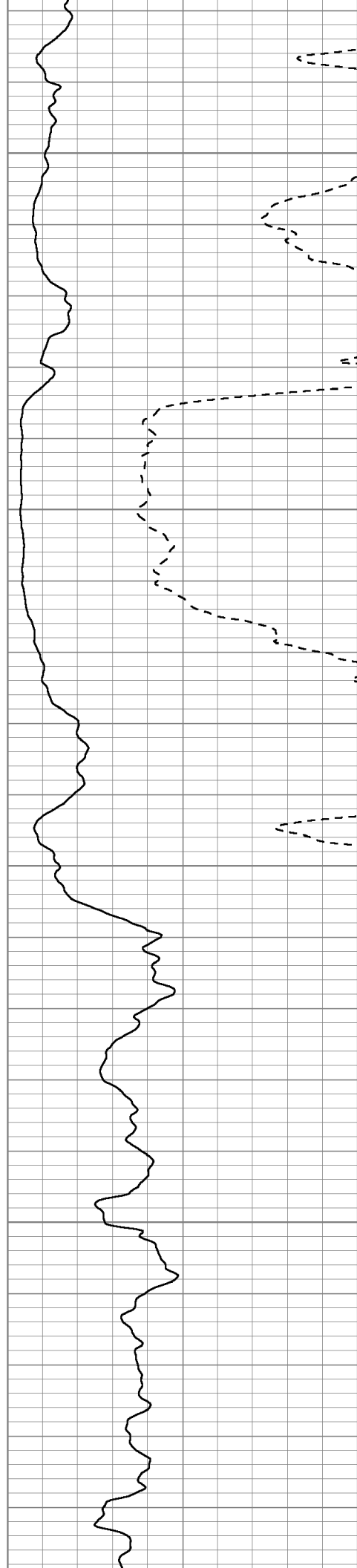


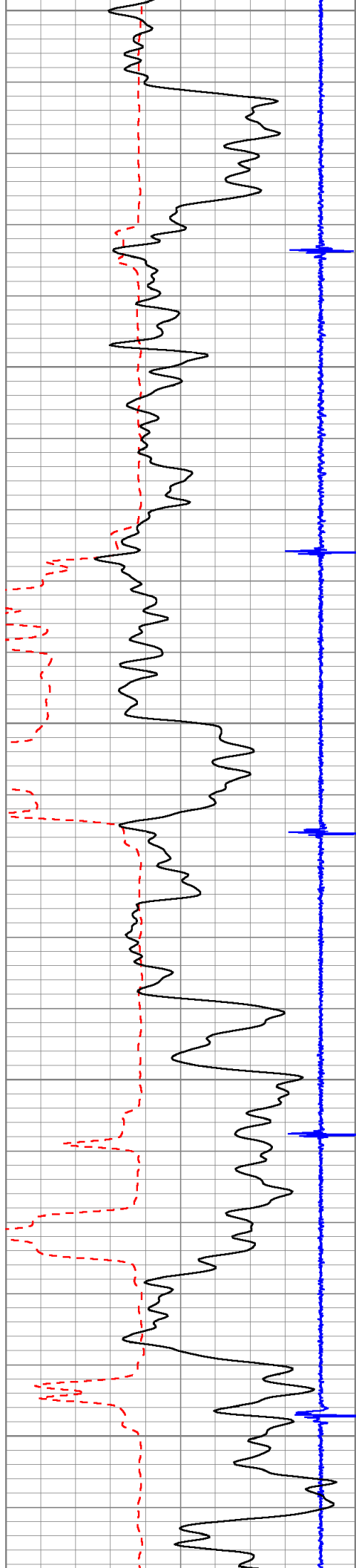
2550

2600

2650

2700





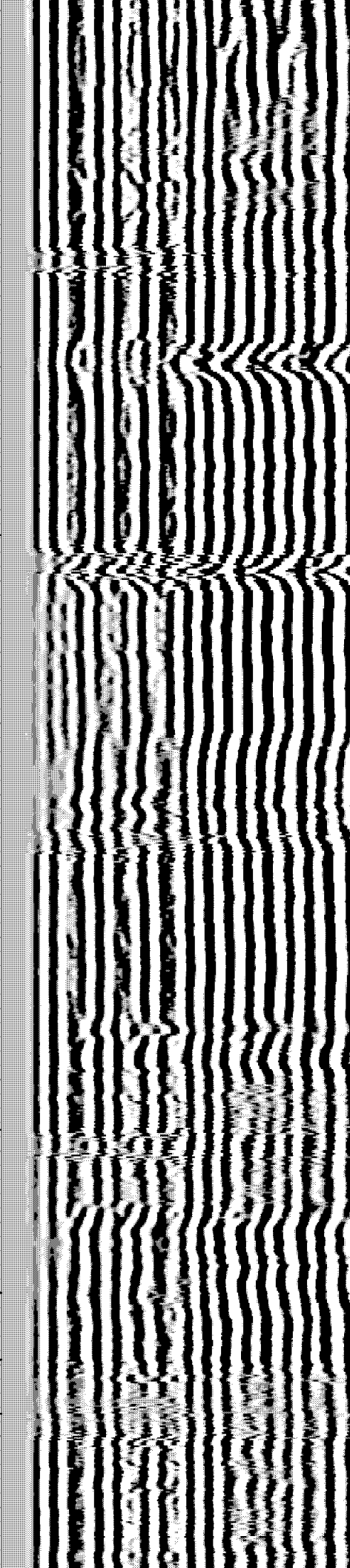
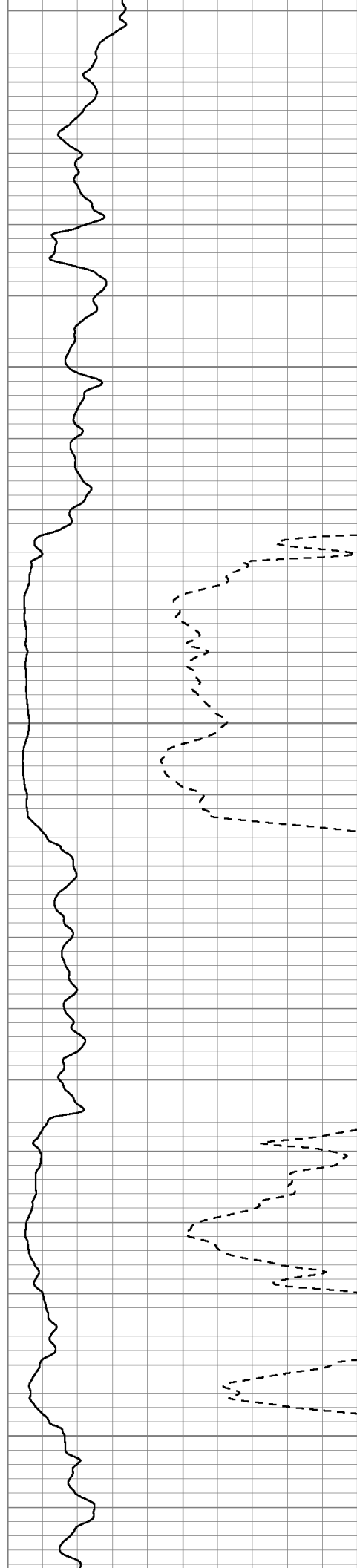
2750

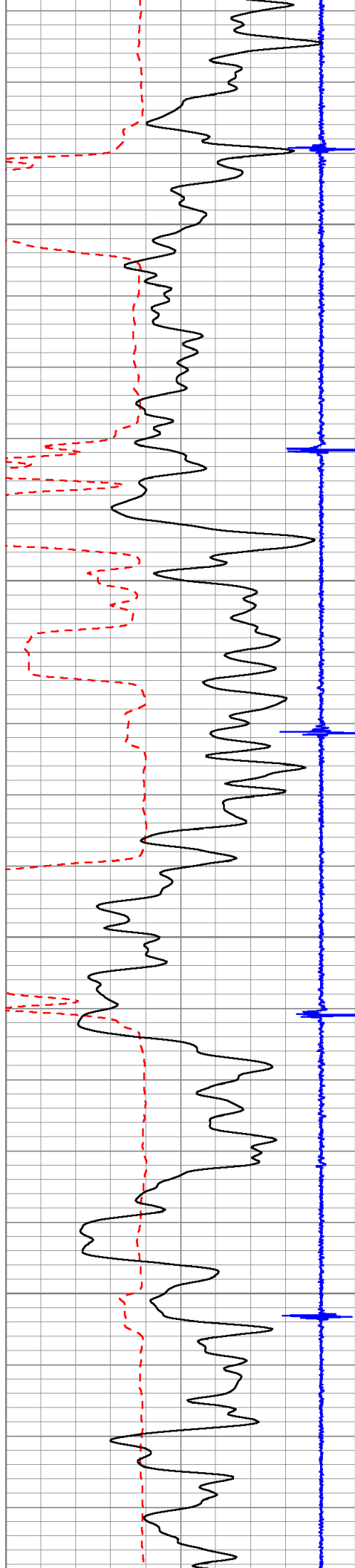
2800

2850

2900

2950



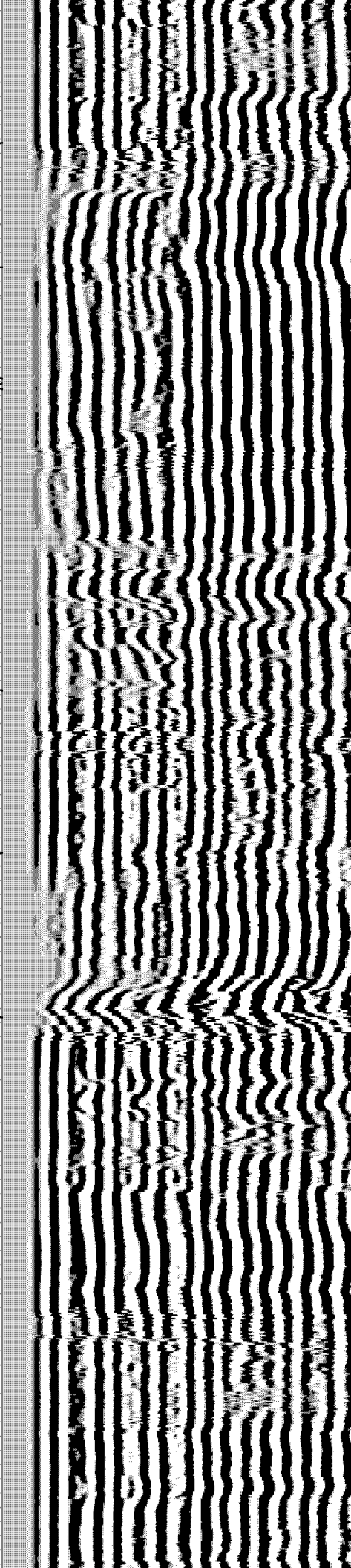
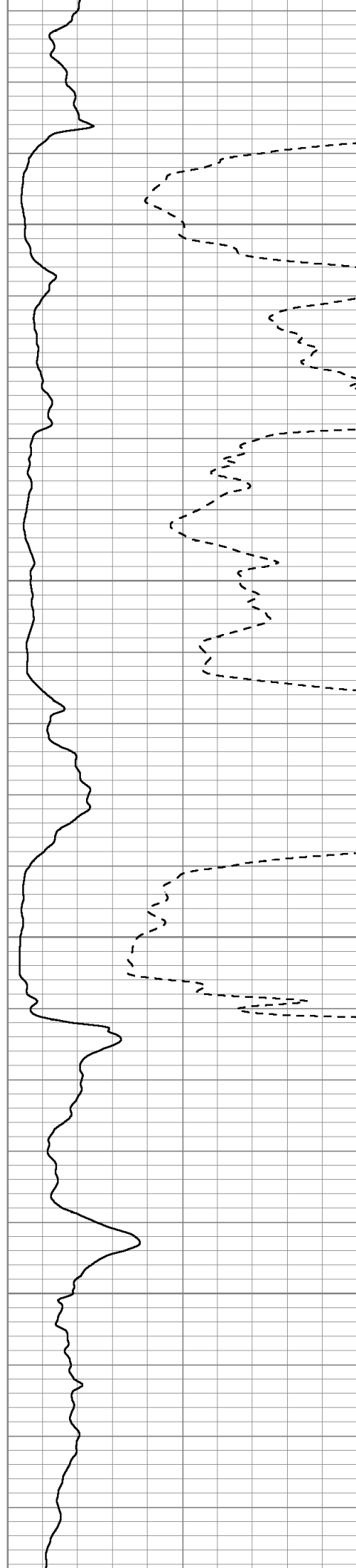


3000

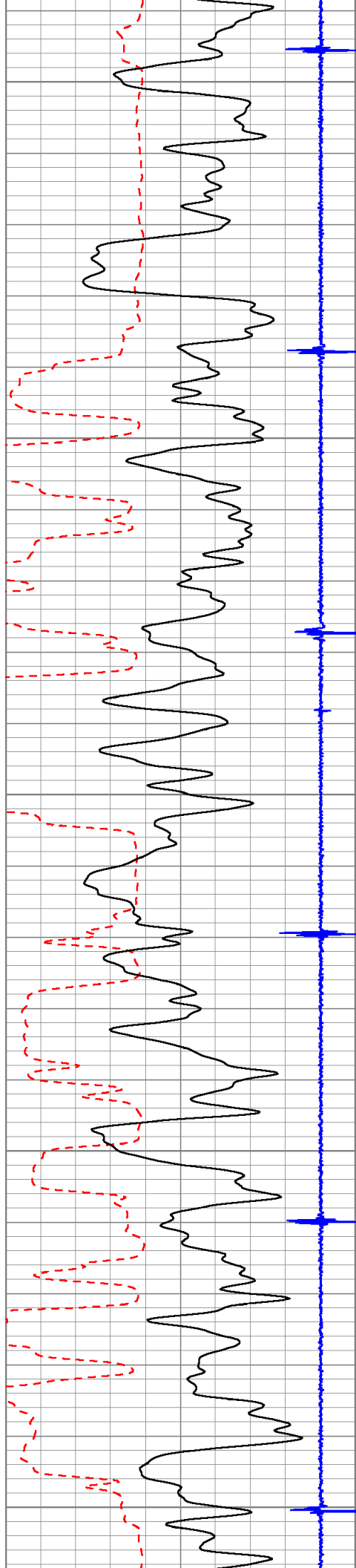
3050

3100

3150







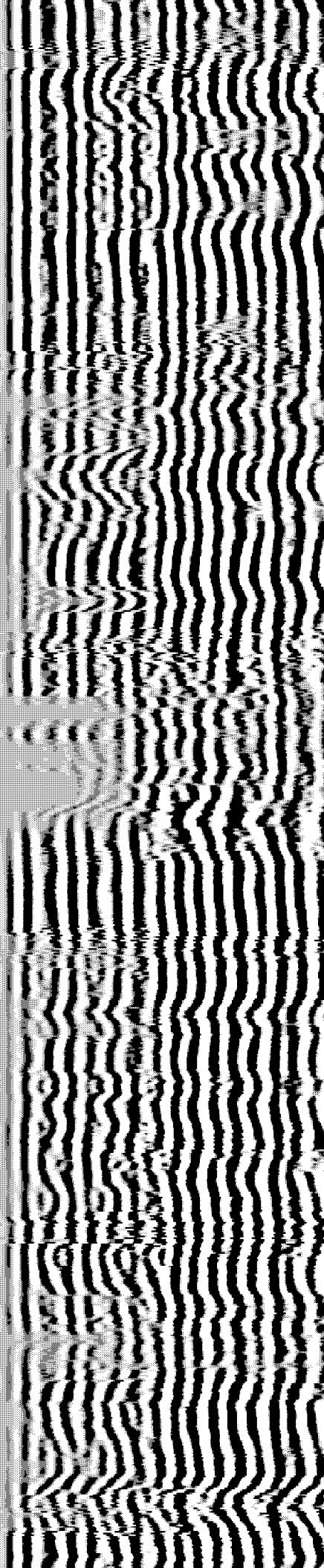
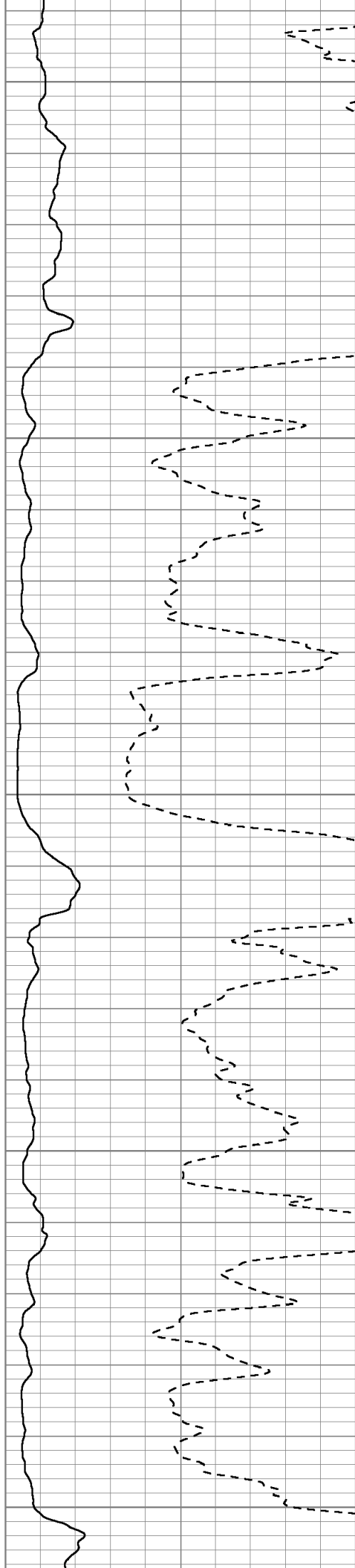
3200

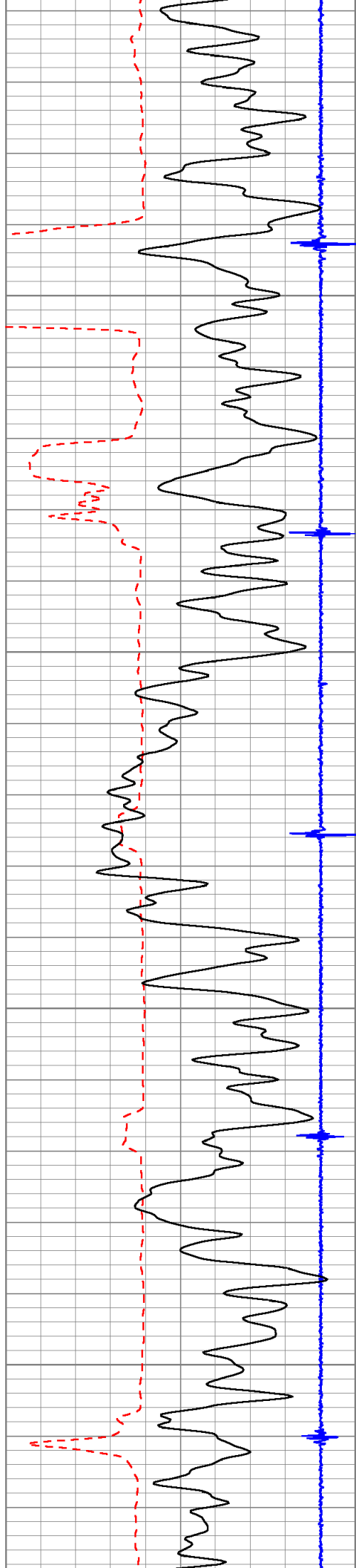
3250

3300

3350

3400



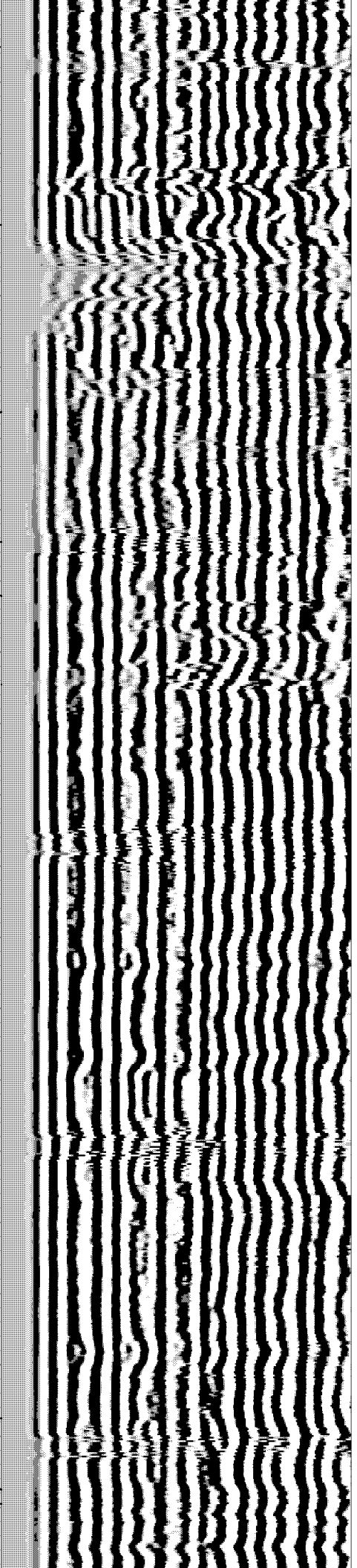
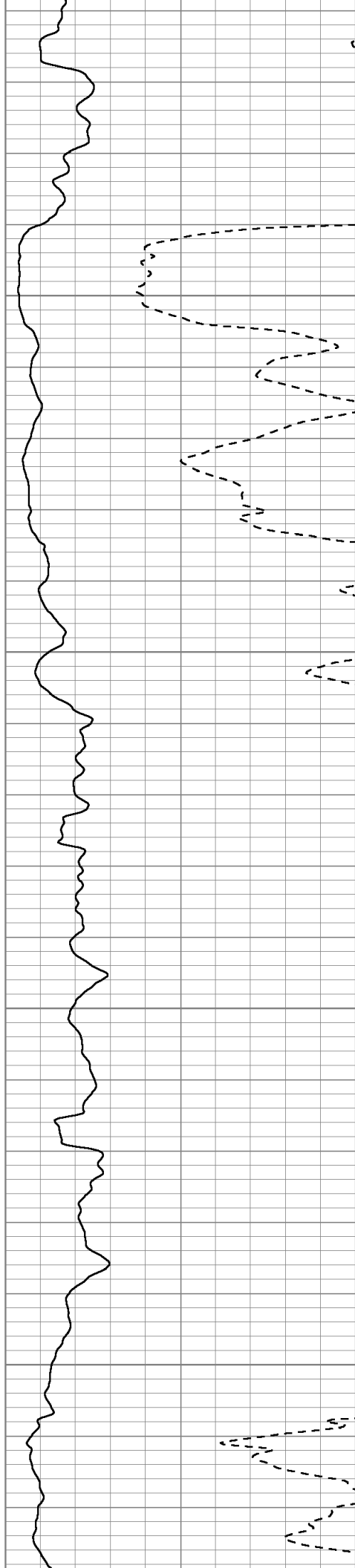


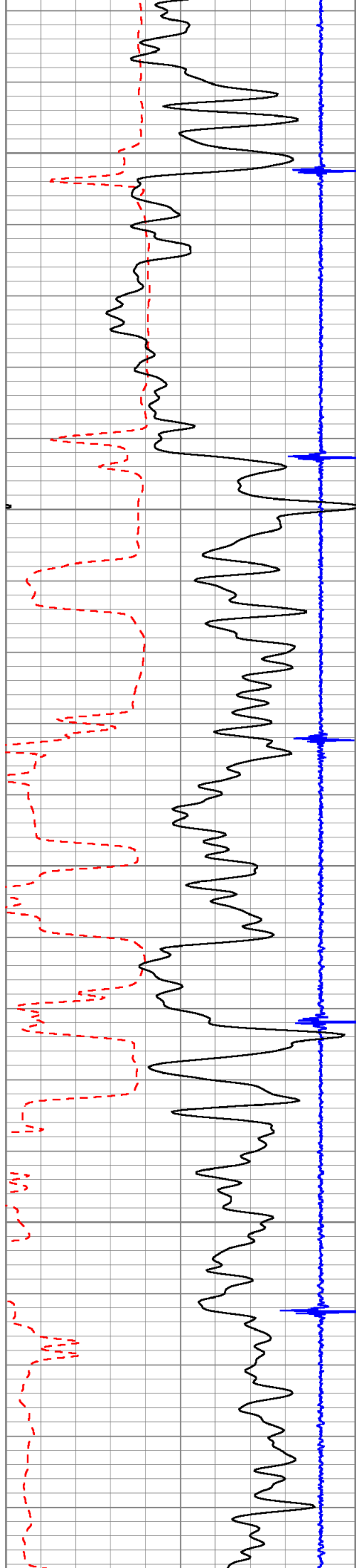
3450

3500

3550

3600



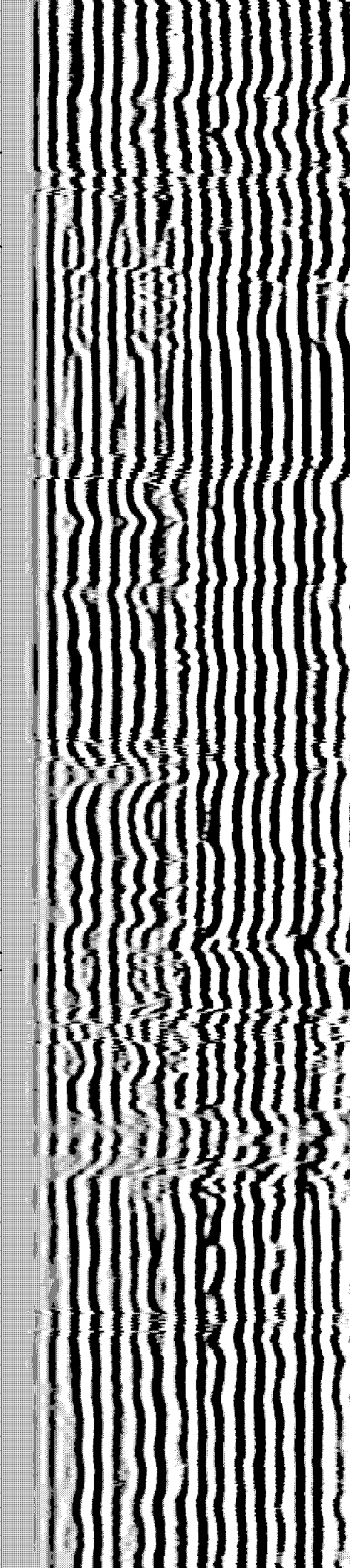
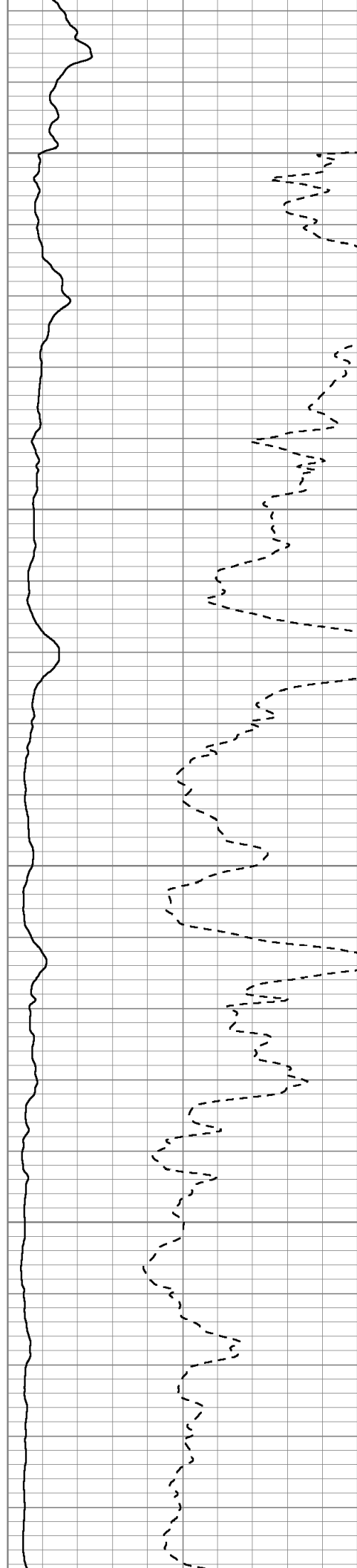


3650

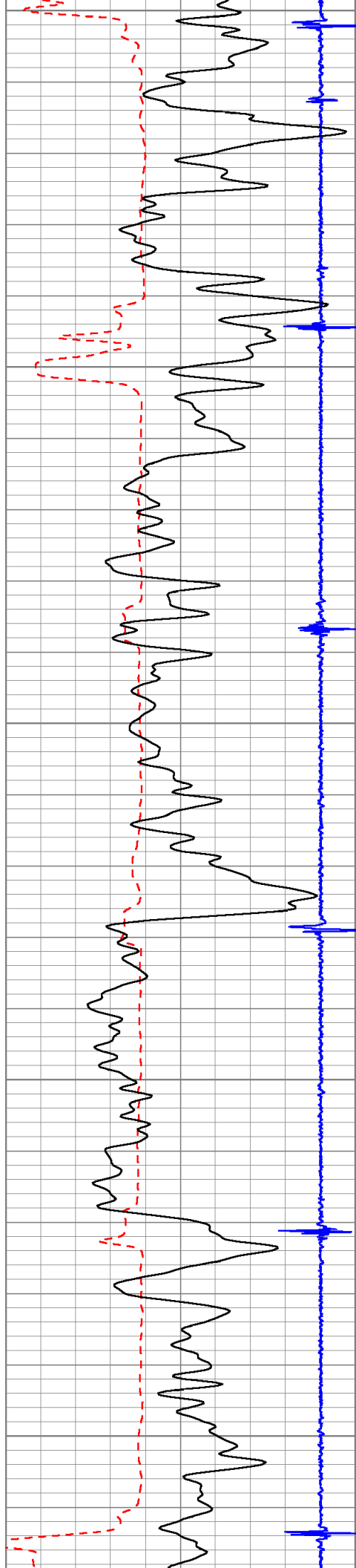
3700

3750

3800







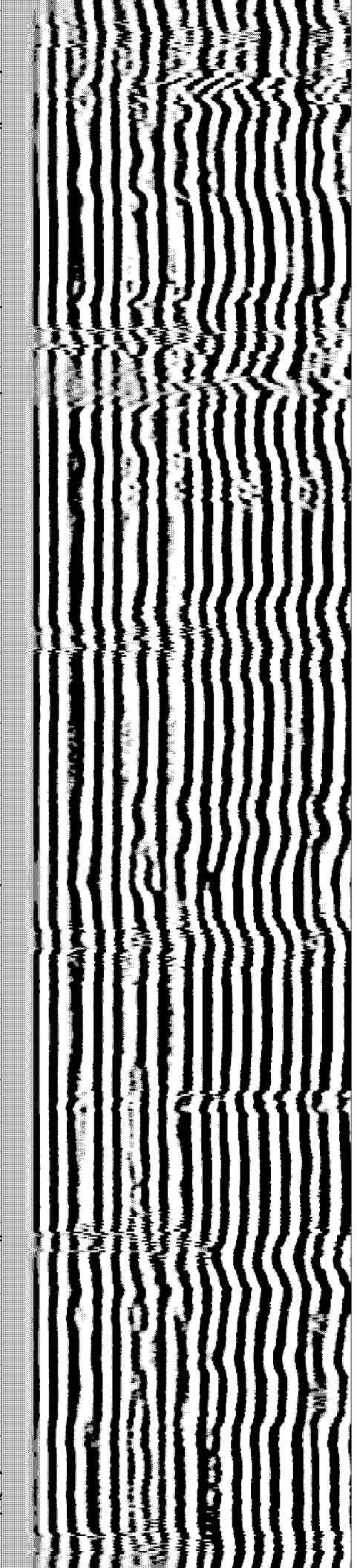
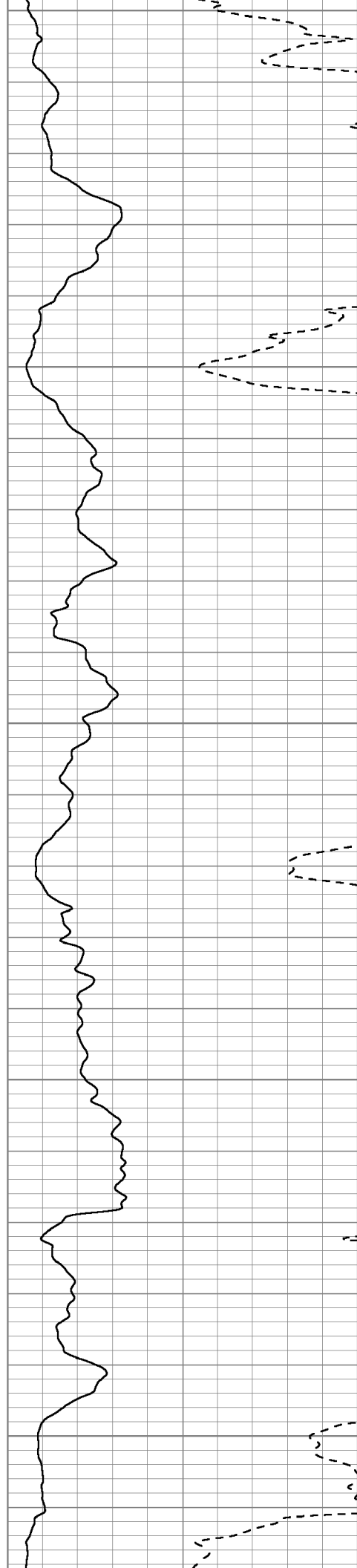
3850

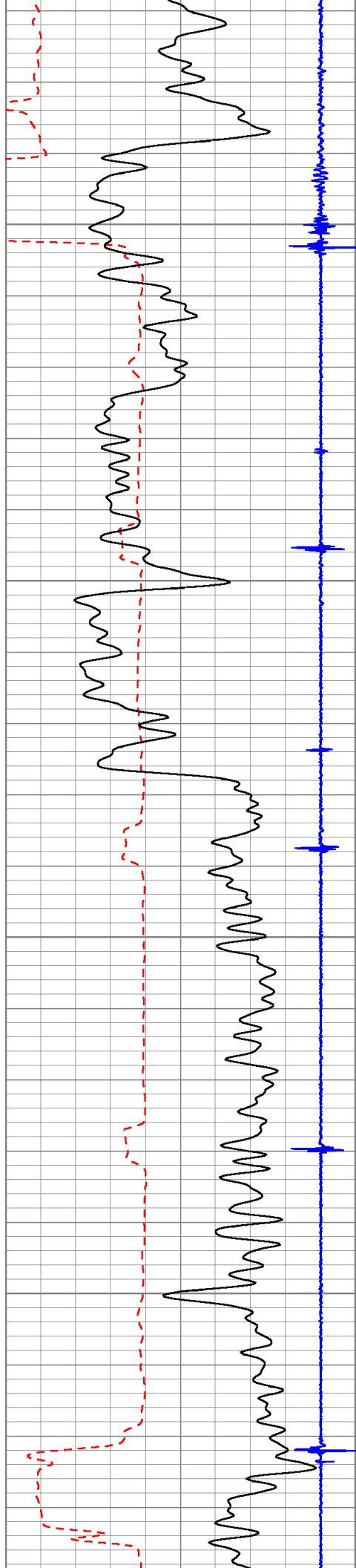
3900

3950

4000

4050



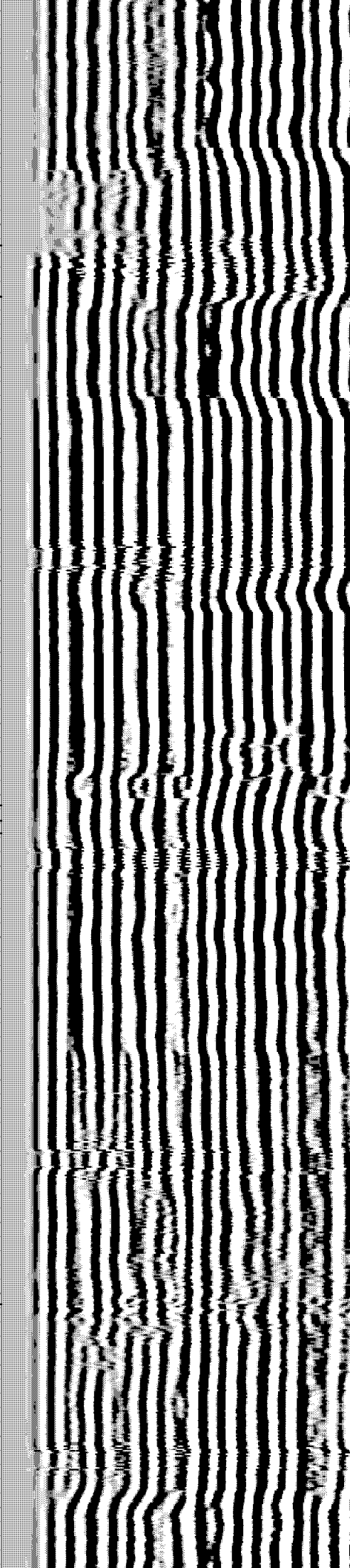
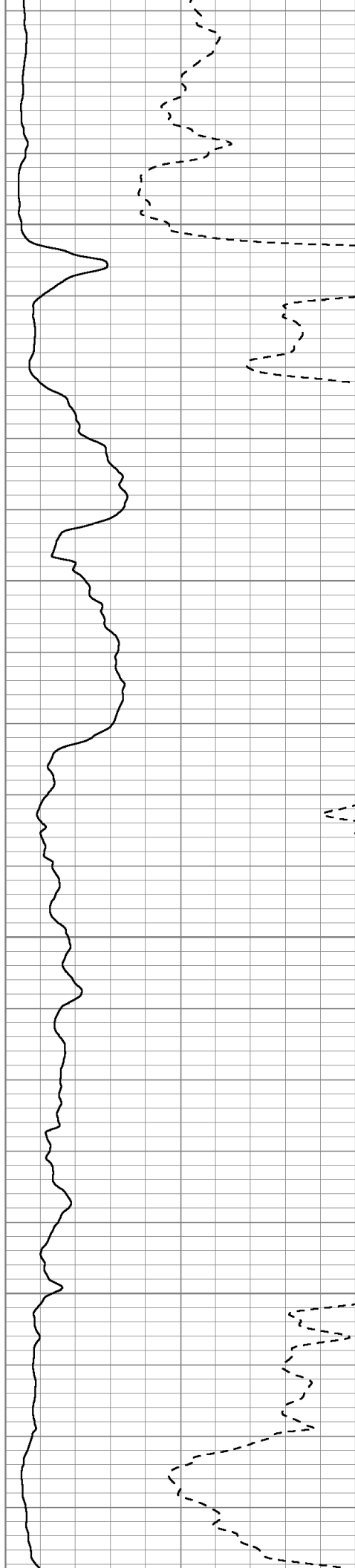


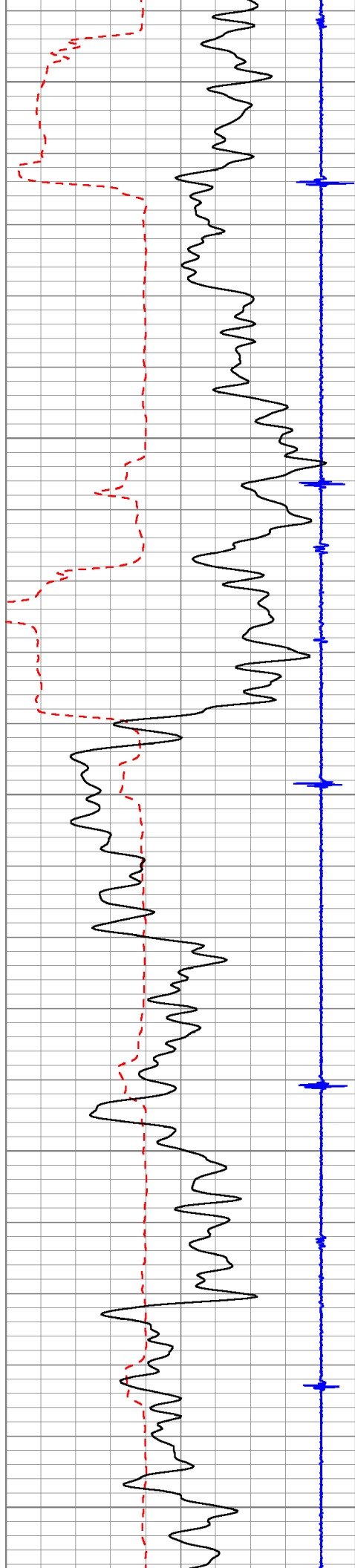
4100

4150

4200

4250





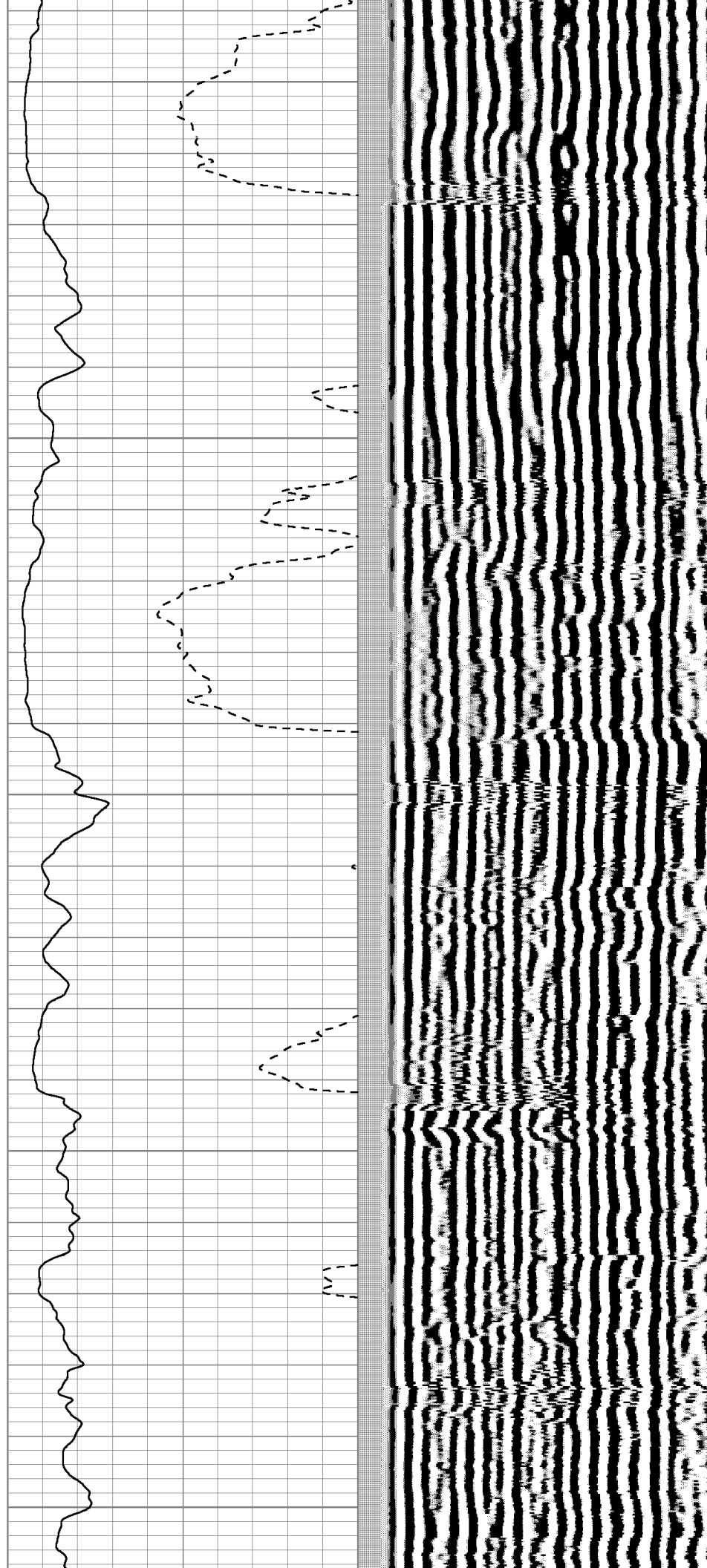
4300

4350

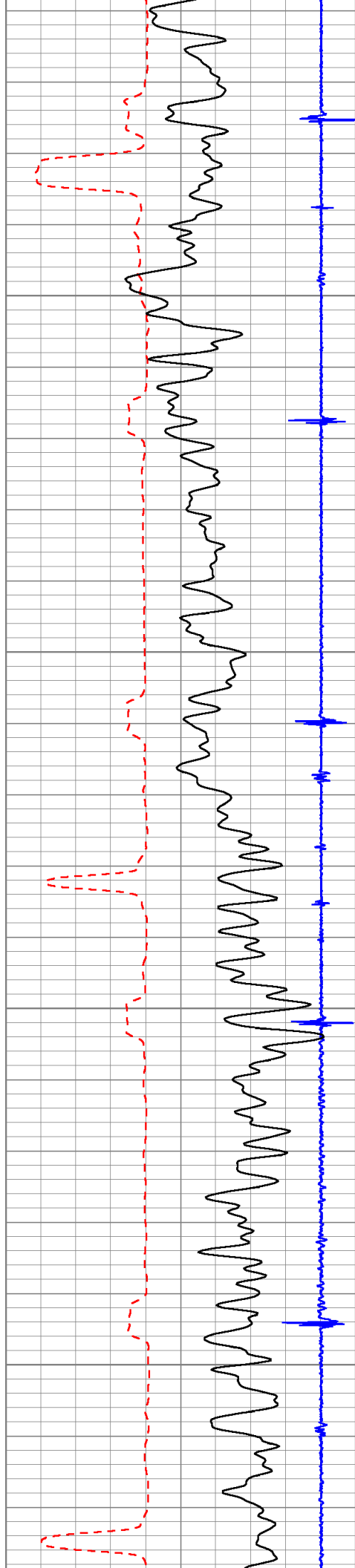
4400

4450

4500





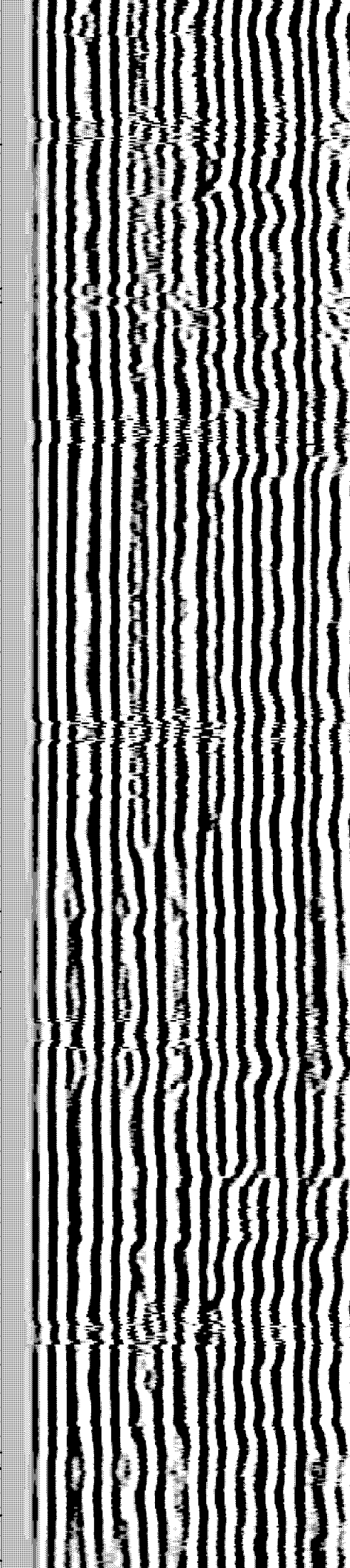
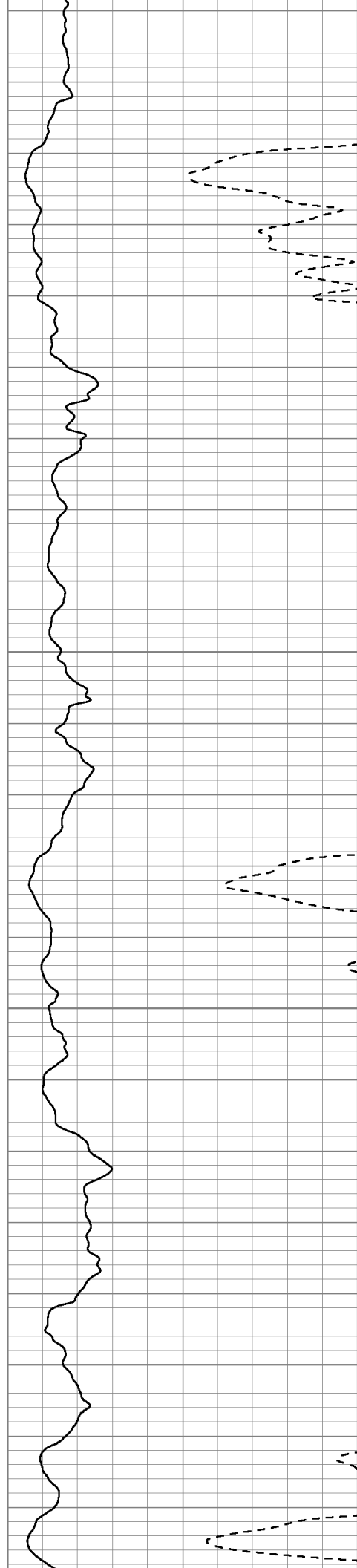


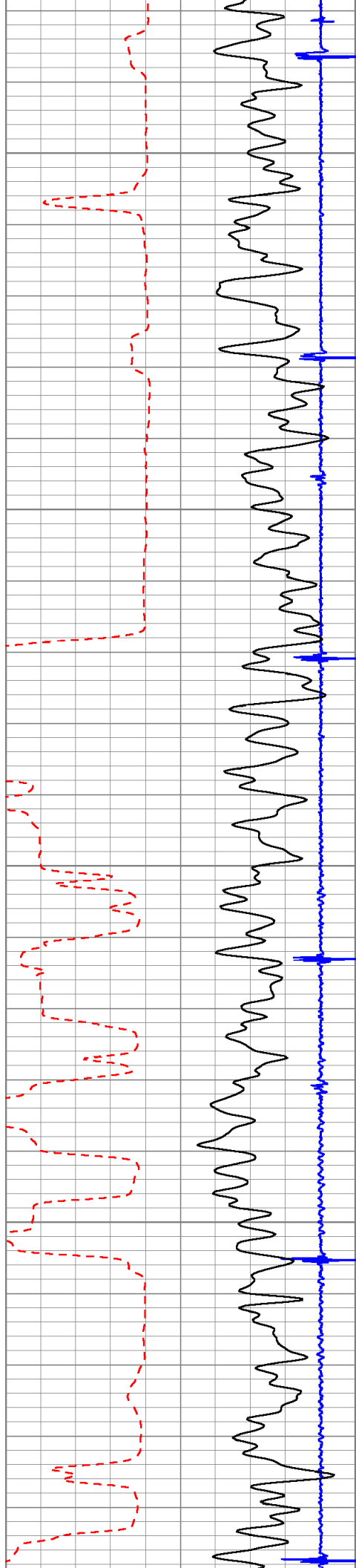
4550

4600

4650

4700



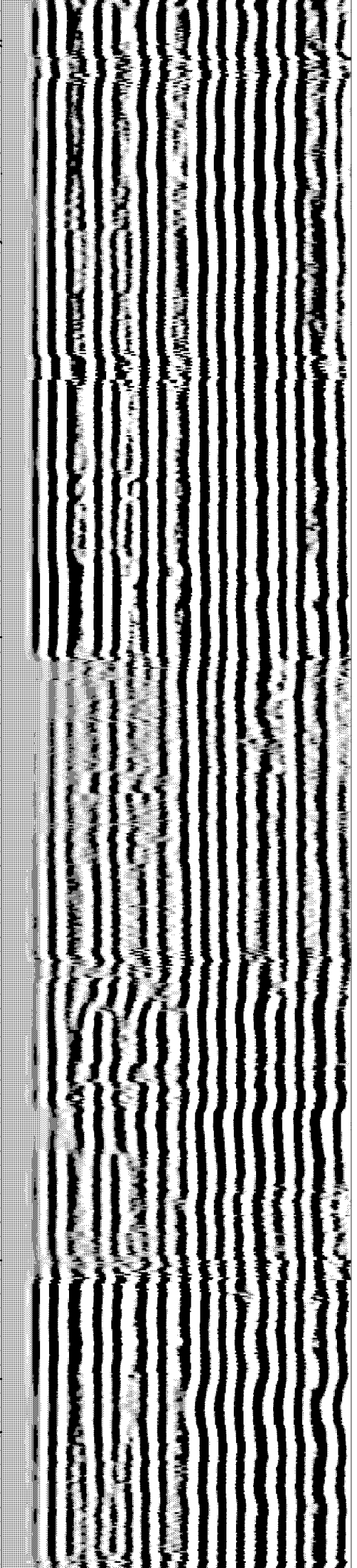
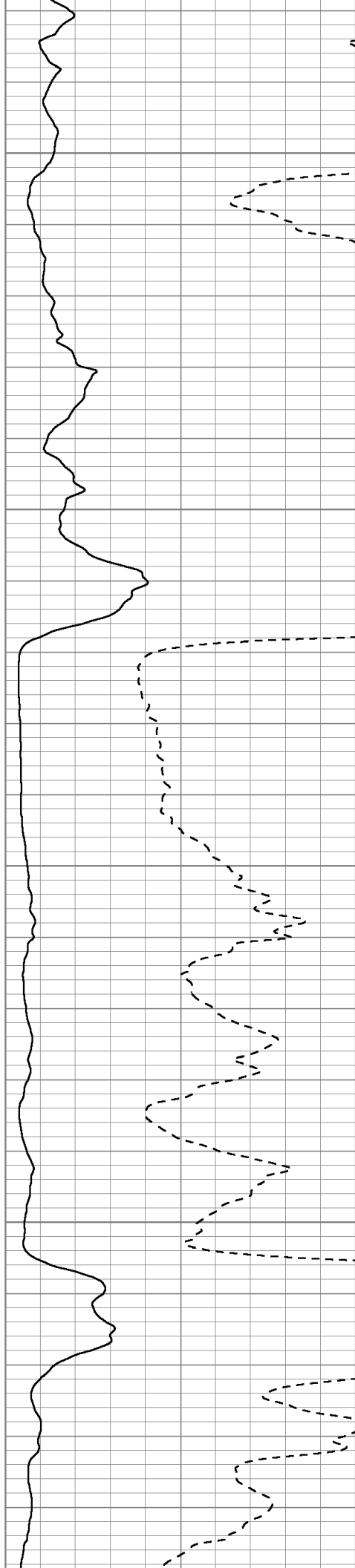


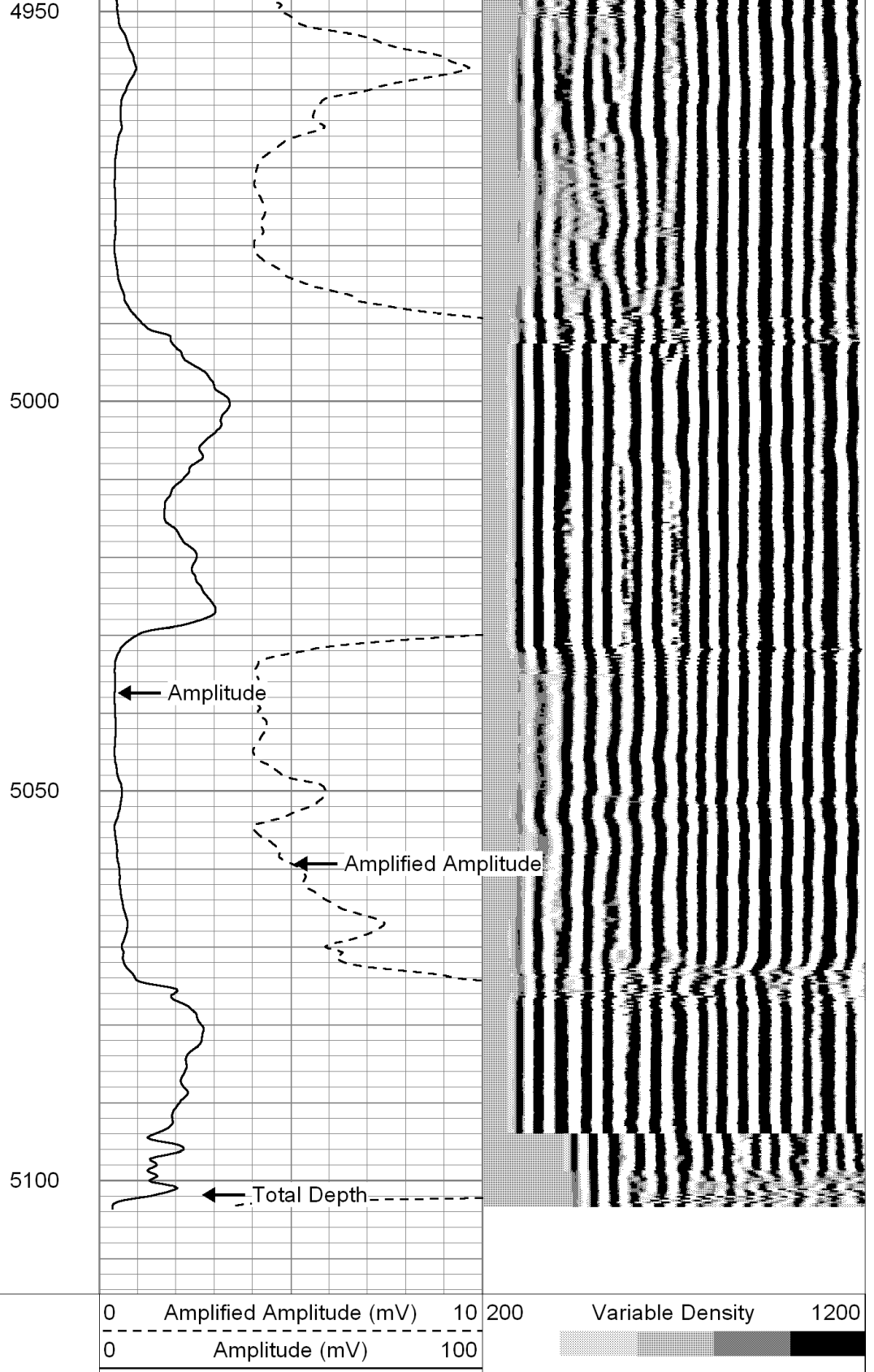
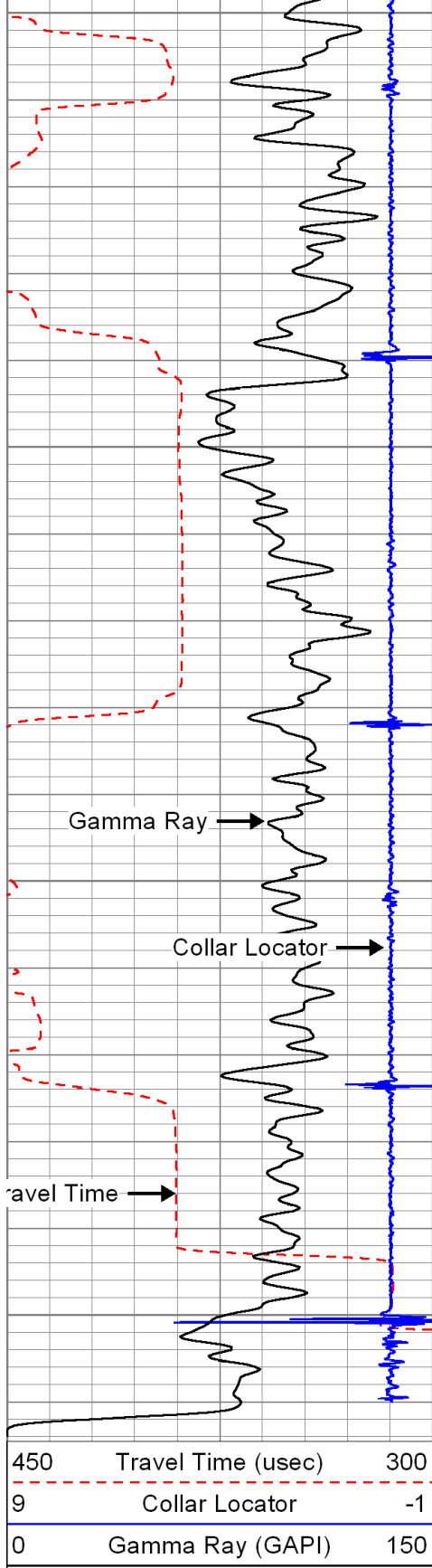
4750

4800

4850

4900



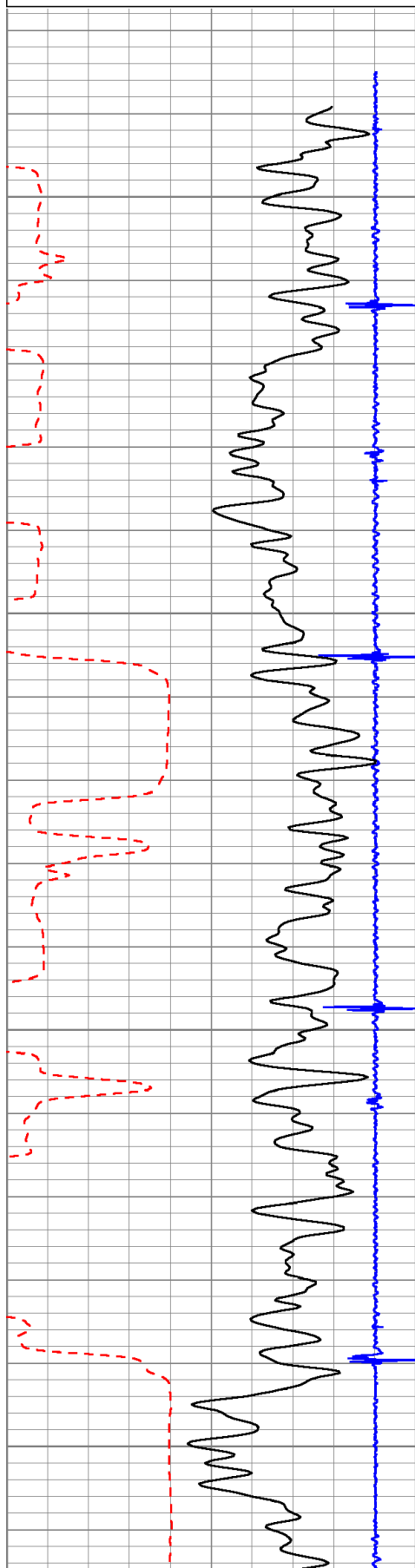
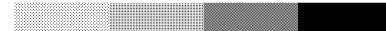




450	Travel Time (usec)	300
9	Collar Locator	-1
0	Gamma Ray (GAPI)	150

0	Amplified Amplitude (mV)	10
0	Amplitude (mV)	100

200 Variable Density 1200

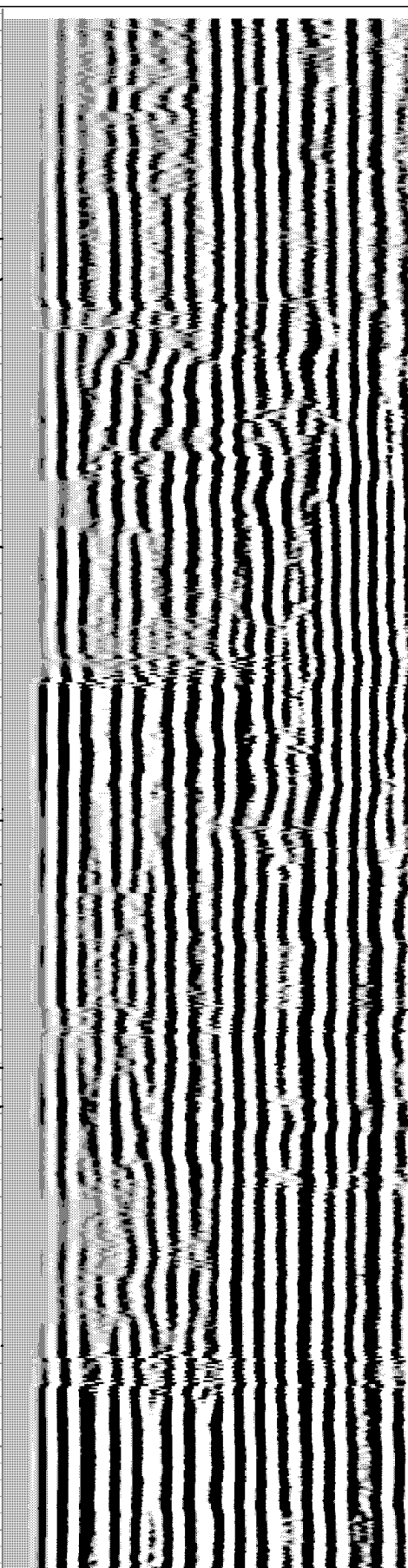
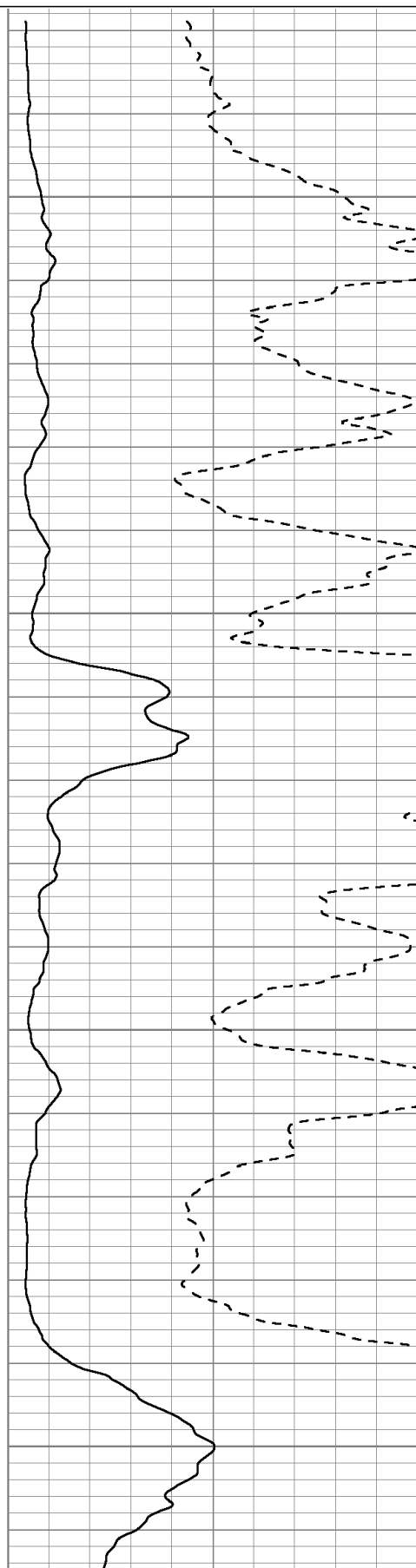


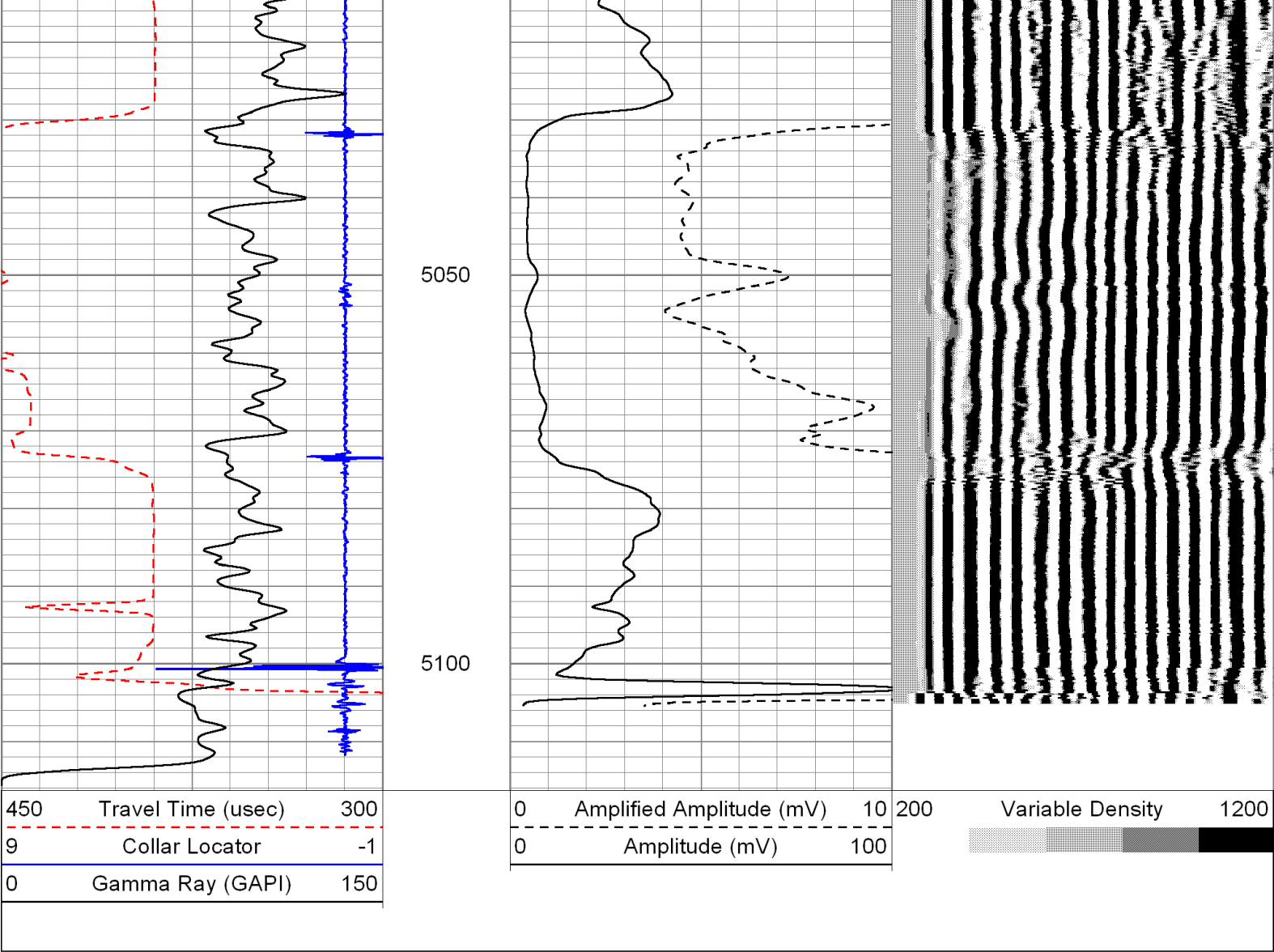
4850

4900

4950

5000





Sensor	Offset (ft)	Schematic	Description	Len (ft)	OD (in)	Wt (lb)
WVF3	12.23		CHD-STNDRD (GOI) Standard Cable Head	1.00	1.69	10.00
			Probe Probe 2 3/4 Centralizer	2.90	2.75	20.00
			CBL-Probe (080536) Probe 2.75" Dual Receiver Bond	8.92	2.75	60.00

Tool Joint	Length (ft)	Weight (lb)	OD (in)	Tool Joint	Length (ft)	Weight (lb)	OD (in)
WVF5	11.23						
				Probe	2.90	2.75	20.00
				Probe 2 3/4 Centralizer			
CCL	4.47			CCL-312tekco (3.12TEKCO)	1.82	3.12	25.00
				3 1/8 TEK CCL Earth Mag			
GR	2.54			GR-Probe275 (080537)	3.33	2.75	57.00
Dataset: 109036.db: field/well/run1/pass4.3 Total Length: 20.86 ft Total Weight: 192.00 lb O.D. 3.12 in							