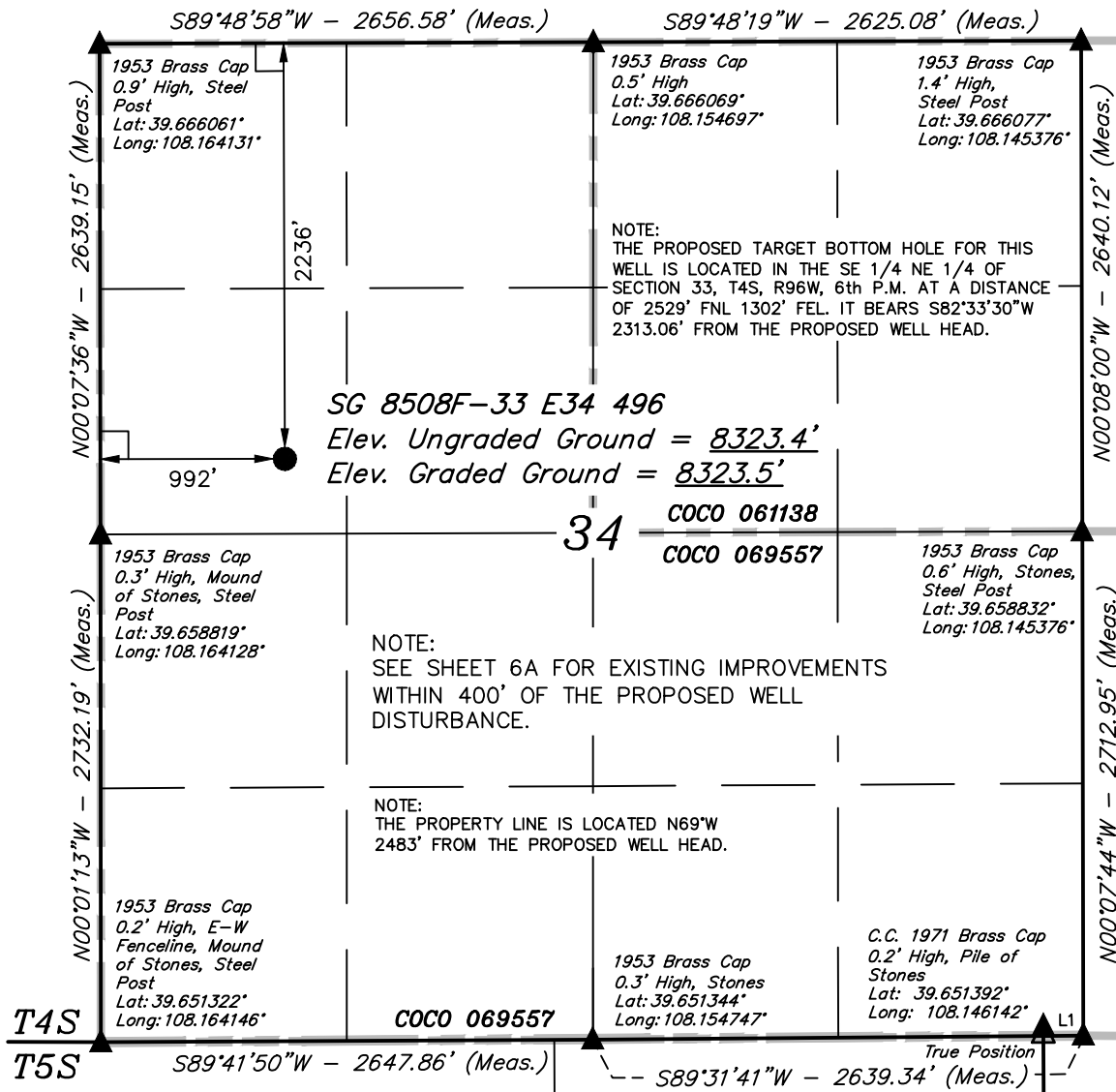


T4S, R96W, 6th P.M.



Sec. 3

Encana OIL & GAS (USA) INC.

Well location, SG 8508F-33 E34 496 (SURFACE LOCATION), located as shown in the SW 1/4 NW 1/4 of Section 34, T4S, R96W, 6th P.M., Garfield County, Colorado.

BASIS OF ELEVATION

BENCH MARK (H79) LOCATED IN THE NE 1/4 OF SECTION 35, T4S, R98W, 6th P.M. TAKEN FROM THE BULL FORK QUADRANGLE, COLORADO, 7.5 MINUTE SERIES (TOPO GRAPHICAL MAP) PUBLISHED BY THE UNITED STATES DEPARTMENT OF THE INTERIOR, GEOLOGICAL SURVEY. SAID ELEVATION IS MARKED AS BEING 8535 FEET.

BASIS OF BEARINGS

BASIS OF BEARINGS IS A G.P.S. OBSERVATION.

LINE TABLE		
LINE	DIRECTION	LENGTH
L1	N89°31'41"E	215.17'



CERTIFICATE

THIS IS TO CERTIFY THAT THE ABOVE PLAT WAS PREPARED AND LOCATION AS SHOWN WAS STAKED ON THE GROUND FROM FIELD NOTES OF ACTUAL SURVEYS MADE BY ME OR UNDER MY SUPERVISION AND THAT THE SAME ARE TRUE AND CORRECT TO THE BEST OF MY KNOWLEDGE AND BELIEF.

REGISTERED LAND SURVEYOR
REGISTRATION NO. 17492
STATE OF COLORADO

REVISED: 12-18-12 T.B.

UINTAH ENGINEERING & LAND SURVEYING
85 SOUTH 200 EAST - VERNAL, UTAH 84078
(435) 789-1017

PDOP = 1.4

NAD 83 (SURFACE LOCATION)	
LATITUDE	= 39°39'35.74" (39.659928)
LONGITUDE	= 108°09'38.19" (108.160608)
NAD 27 (SURFACE LOCATION)	
LATITUDE	= 39°39'35.83" (39.659953)
LONGITUDE	= 108°09'35.90" (108.159972)

SCALE 1" = 1000'	DATE SURVEYED: 06-01-12	DATE DRAWN: 07-05-12
PARTY B.B. C.C. T.B.	REFERENCES G.L.O. PLAT	
WEATHER COLD	FILE Encana OIL & GAS (USA) INC.	

NAD 83 (TARGET BOTTOM HOLE)
LATITUDE = 39°39'32.83" (39.659119)
LONGITUDE = 108°10'07.51" (108.168753)
NAD 27 (TARGET BOTTOM HOLE)
LATITUDE = 39°39'32.92" (39.659144)
LONGITUDE = 108°10'05.22" (108.168117)