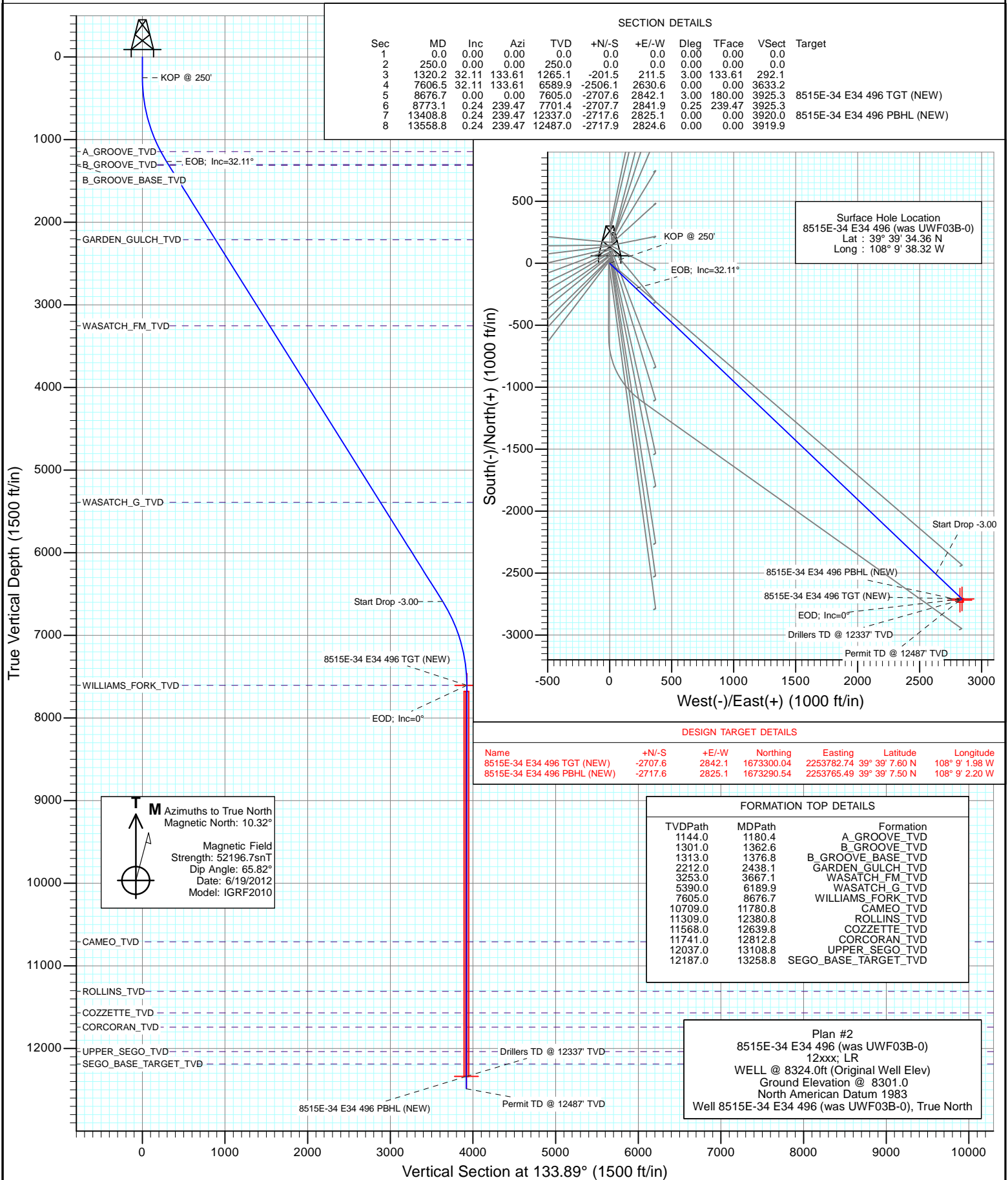




Project: Story Gulch
Site: S33-T4S-R96W (E34 496)
Well: 8515E-34 E34 496 (was UWF03B-0)
Wellbore: DD
Design: Plan #2



Planning Report

Database:	USA EDM 5000 Multi Users DB	Local Co-ordinate Reference:	Well 8515E-34 E34 496 (was UWF03B-0)
Company:	EnCana Oil & Gas (USA) Inc	TVD Reference:	WELL @ 8324.0ft (Original Well Elev)
Project:	Story Gulch	MD Reference:	WELL @ 8324.0ft (Original Well Elev)
Site:	S33-T4S-R96W (E34 496)	North Reference:	True
Well:	8515E-34 E34 496 (was UWF03B-0)	Survey Calculation Method:	Minimum Curvature
Wellbore:	DD		
Design:	Plan #2		

Project	Story Gulch		
Map System:	US State Plane 1983	System Datum:	Mean Sea Level
Geo Datum:	North American Datum 1983		
Map Zone:	Colorado Central Zone		

Site		S33-T4S-R96W (E34 496)			
Site Position:		Northing:	1,676,257.20 ft	Latitude:	39° 39' 36.02 N
From:	Lat/Long	Easting:	2,251,040.13 ft	Longitude:	108° 9' 38.14 W
Position Uncertainty:	0.0 ft	Slot Radius:	13.200 in	Grid Convergence:	-1.68 °

Well	8515E-34 E34 496 (was UWF03B-0)					
Well Position	+N/-S	0.0 ft	Northing:	1,676,089.70 ft	Latitude:	39° 39' 34.36 N
	+E/-W	0.0 ft	Easting:	2,251,021.14 ft	Longitude:	108° 9' 38.32 W
Position Uncertainty		0.0 ft	Wellhead Elevation:	ft	Ground Level:	8,301.0 ft

Wellbore	DD				
Magnetics	Model Name	Sample Date	Declination (°)	Dip Angle (°)	Field Strength (nT)
	IGRF2010	6/19/2012	10.32	65.82	52,197

Design	Plan #2				
Audit Notes:					
Version:	Phase:	PLAN		Tie On Depth:	0.0
Vertical Section:	Depth From (TVD) (ft)	+N/-S (ft)	+E/-W (ft)	Direction (°)	
	0.0	0.0	0.0	133.89	

Plan Sections										
Measured Depth (ft)	Inclination (°)	Azimuth (°)	Vertical Depth (ft)	+N/-S (ft)	+E/-W (ft)	Dogleg Rate (°/100ft)	Build Rate (°/100ft)	Turn Rate (°/100ft)	TFO (°)	Target
0.0	0.00	0.00	0.0	0.0	0.0	0.00	0.00	0.00	0.00	
250.0	0.00	0.00	250.0	0.0	0.0	0.00	0.00	0.00	0.00	
1,320.2	32.11	133.61	1,265.1	-201.5	211.5	3.00	3.00	0.00	133.61	
7,606.5	32.11	133.61	6,589.9	-2,506.1	2,630.6	0.00	0.00	0.00	0.00	
8,676.7	0.00	0.00	7,605.0	-2,707.6	2,842.1	3.00	-3.00	0.00	180.00	8515E-34 E34 496 TC
8,773.1	0.24	239.47	7,701.4	-2,707.7	2,841.9	0.25	0.25	-125.09	239.47	
13,408.8	0.24	239.47	12,337.0	-2,717.6	2,825.1	0.00	0.00	0.00	0.00	8515E-34 E34 496 PE
13,558.8	0.24	239.47	12,487.0	-2,717.9	2,824.6	0.00	0.00	0.00	0.00	

Planning Report

Database:	USA EDM 5000 Multi Users DB	Local Co-ordinate Reference:	Well 8515E-34 E34 496 (was UWF03B-0)
Company:	EnCana Oil & Gas (USA) Inc	TVD Reference:	WELL @ 8324.0ft (Original Well Elev)
Project:	Story Gulch	MD Reference:	WELL @ 8324.0ft (Original Well Elev)
Site:	S33-T4S-R96W (E34 496)	North Reference:	True
Well:	8515E-34 E34 496 (was UWF03B-0)	Survey Calculation Method:	Minimum Curvature
Wellbore:	DD		
Design:	Plan #2		

Planned Survey

Measured Depth (ft)	Inclination (°)	Azimuth (°)	Vertical Depth (ft)	+N/-S (ft)	+E/-W (ft)	Vertical Section (ft)	Dogleg Rate (°/100ft)	Build Rate (°/100ft)	Comments / Formations
0.0	0.00	0.00	0.0	0.0	0.0	0.0	0.00	0.00	
100.0	0.00	0.00	100.0	0.0	0.0	0.0	0.00	0.00	
200.0	0.00	0.00	200.0	0.0	0.0	0.0	0.00	0.00	
250.0	0.00	0.00	250.0	0.0	0.0	0.0	0.00	0.00	KOP @ 250'
300.0	1.50	133.61	300.0	-0.5	0.5	0.7	3.00	3.00	
400.0	4.50	133.61	399.8	-4.1	4.3	5.9	3.00	3.00	
500.0	7.50	133.61	499.3	-11.3	11.8	16.3	3.00	3.00	
600.0	10.50	133.61	598.0	-22.1	23.2	32.0	3.00	3.00	
700.0	13.50	133.61	695.8	-36.4	38.2	52.8	3.00	3.00	
800.0	16.50	133.61	792.4	-54.2	56.9	78.6	3.00	3.00	
900.0	19.50	133.61	887.5	-75.6	79.3	109.5	3.00	3.00	
1,000.0	22.50	133.61	980.9	-100.3	105.3	145.4	3.00	3.00	
1,100.0	25.50	133.61	1,072.2	-128.3	134.7	186.0	3.00	3.00	
1,180.4	27.91	133.61	1,144.0	-153.2	160.9	222.2	3.00	3.00	A_GROOVE_TVD
1,200.0	28.50	133.61	1,161.3	-159.6	167.6	231.4	3.00	3.00	
1,300.0	31.50	133.61	1,247.9	-194.1	203.8	281.4	3.00	3.00	
1,320.2	32.11	133.61	1,265.1	-201.5	211.5	292.1	3.00	3.00	EOB; Inc=32.11°
1,362.6	32.11	133.61	1,301.0	-217.0	227.8	314.6	0.00	0.00	B_GROOVE_TVD
1,376.8	32.11	133.61	1,313.0	-222.2	233.3	322.2	0.00	0.00	B_GROOVE_BASE_TVD
1,400.0	32.11	133.61	1,332.7	-230.7	242.2	334.5	0.00	0.00	
1,500.0	32.11	133.61	1,417.4	-267.4	280.7	387.6	0.00	0.00	
1,600.0	32.11	133.61	1,502.1	-304.0	319.2	440.8	0.00	0.00	
1,700.0	32.11	133.61	1,586.8	-340.7	357.6	493.9	0.00	0.00	
1,800.0	32.11	133.61	1,671.5	-377.4	396.1	547.1	0.00	0.00	
1,900.0	32.11	133.61	1,756.2	-414.0	434.6	600.2	0.00	0.00	
2,000.0	32.11	133.61	1,840.9	-450.7	473.1	653.4	0.00	0.00	
2,100.0	32.11	133.61	1,925.6	-487.4	511.6	706.5	0.00	0.00	
2,200.0	32.11	133.61	2,010.3	-524.0	550.0	759.7	0.00	0.00	
2,300.0	32.11	133.61	2,095.0	-560.7	588.5	812.8	0.00	0.00	
2,400.0	32.11	133.61	2,179.7	-597.3	627.0	866.0	0.00	0.00	
2,438.1	32.11	133.61	2,212.0	-611.3	641.7	886.2	0.00	0.00	GARDEN_GULCH_TVD
2,500.0	32.11	133.61	2,264.4	-634.0	665.5	919.1	0.00	0.00	
2,600.0	32.11	133.61	2,349.1	-670.7	704.0	972.3	0.00	0.00	
2,700.0	32.11	133.61	2,433.8	-707.3	742.5	1,025.4	0.00	0.00	
2,800.0	32.11	133.61	2,518.5	-744.0	780.9	1,078.6	0.00	0.00	
2,900.0	32.11	133.61	2,603.2	-780.6	819.4	1,131.7	0.00	0.00	
3,000.0	32.11	133.61	2,687.9	-817.3	857.9	1,184.9	0.00	0.00	
3,100.0	32.11	133.61	2,772.7	-854.0	896.4	1,238.0	0.00	0.00	
3,200.0	32.11	133.61	2,857.4	-890.6	934.9	1,291.2	0.00	0.00	
3,300.0	32.11	133.61	2,942.1	-927.3	973.4	1,344.3	0.00	0.00	
3,400.0	32.11	133.61	3,026.8	-964.0	1,011.8	1,397.5	0.00	0.00	
3,500.0	32.11	133.61	3,111.5	-1,000.6	1,050.3	1,450.6	0.00	0.00	
3,600.0	32.11	133.61	3,196.2	-1,037.3	1,088.8	1,503.8	0.00	0.00	
3,667.1	32.11	133.61	3,253.0	-1,061.9	1,114.6	1,539.4	0.00	0.00	WASATCH_FM_TVD
3,700.0	32.11	133.61	3,280.9	-1,073.9	1,127.3	1,556.9	0.00	0.00	
3,800.0	32.11	133.61	3,365.6	-1,110.6	1,165.8	1,610.1	0.00	0.00	
3,900.0	32.11	133.61	3,450.3	-1,147.3	1,204.3	1,663.2	0.00	0.00	
4,000.0	32.11	133.61	3,535.0	-1,183.9	1,242.7	1,716.4	0.00	0.00	
4,100.0	32.11	133.61	3,619.7	-1,220.6	1,281.2	1,769.5	0.00	0.00	
4,200.0	32.11	133.61	3,704.4	-1,257.2	1,319.7	1,822.7	0.00	0.00	
4,300.0	32.11	133.61	3,789.1	-1,293.9	1,358.2	1,875.8	0.00	0.00	
4,400.0	32.11	133.61	3,873.8	-1,330.6	1,396.7	1,929.0	0.00	0.00	

Planning Report

Database:	USA EDM 5000 Multi Users DB	Local Co-ordinate Reference:	Well 8515E-34 E34 496 (was UWF03B-0)
Company:	EnCana Oil & Gas (USA) Inc	TVD Reference:	WELL @ 8324.0ft (Original Well Elev)
Project:	Story Gulch	MD Reference:	WELL @ 8324.0ft (Original Well Elev)
Site:	S33-T4S-R96W (E34 496)	North Reference:	True
Well:	8515E-34 E34 496 (was UWF03B-0)	Survey Calculation Method:	Minimum Curvature
Wellbore:	DD		
Design:	Plan #2		

Planned Survey									
Measured Depth (ft)	Inclination (°)	Azimuth (°)	Vertical Depth (ft)	+N/-S (ft)	+E/-W (ft)	Vertical Section (ft)	Dogleg Rate (°/100ft)	Build Rate (°/100ft)	Comments / Formations
4,500.0	32.11	133.61	3,958.5	-1,367.2	1,435.1	1,982.1	0.00	0.00	
4,600.0	32.11	133.61	4,043.2	-1,403.9	1,473.6	2,035.3	0.00	0.00	
4,700.0	32.11	133.61	4,127.9	-1,440.6	1,512.1	2,088.4	0.00	0.00	
4,800.0	32.11	133.61	4,212.6	-1,477.2	1,550.6	2,141.6	0.00	0.00	
4,900.0	32.11	133.61	4,297.4	-1,513.9	1,589.1	2,194.7	0.00	0.00	
5,000.0	32.11	133.61	4,382.1	-1,550.5	1,627.6	2,247.9	0.00	0.00	
5,100.0	32.11	133.61	4,466.8	-1,587.2	1,666.0	2,301.0	0.00	0.00	
5,200.0	32.11	133.61	4,551.5	-1,623.9	1,704.5	2,354.2	0.00	0.00	
5,300.0	32.11	133.61	4,636.2	-1,660.5	1,743.0	2,407.3	0.00	0.00	
5,400.0	32.11	133.61	4,720.9	-1,697.2	1,781.5	2,460.5	0.00	0.00	
5,500.0	32.11	133.61	4,805.6	-1,733.8	1,820.0	2,513.6	0.00	0.00	
5,600.0	32.11	133.61	4,890.3	-1,770.5	1,858.5	2,566.8	0.00	0.00	
5,700.0	32.11	133.61	4,975.0	-1,807.2	1,896.9	2,619.9	0.00	0.00	
5,800.0	32.11	133.61	5,059.7	-1,843.8	1,935.4	2,673.1	0.00	0.00	
5,900.0	32.11	133.61	5,144.4	-1,880.5	1,973.9	2,726.2	0.00	0.00	
6,000.0	32.11	133.61	5,229.1	-1,917.2	2,012.4	2,779.4	0.00	0.00	
6,100.0	32.11	133.61	5,313.8	-1,953.8	2,050.9	2,832.5	0.00	0.00	
6,189.9	32.11	133.61	5,390.0	-1,986.8	2,085.5	2,880.3	0.00	0.00	WASATCH_G_TVD
6,200.0	32.11	133.61	5,398.5	-1,990.5	2,089.4	2,885.7	0.00	0.00	
6,300.0	32.11	133.61	5,483.2	-2,027.1	2,127.8	2,938.8	0.00	0.00	
6,400.0	32.11	133.61	5,567.9	-2,063.8	2,166.3	2,992.0	0.00	0.00	
6,500.0	32.11	133.61	5,652.6	-2,100.5	2,204.8	3,045.1	0.00	0.00	
6,600.0	32.11	133.61	5,737.3	-2,137.1	2,243.3	3,098.3	0.00	0.00	
6,700.0	32.11	133.61	5,822.1	-2,173.8	2,281.8	3,151.4	0.00	0.00	
6,800.0	32.11	133.61	5,906.8	-2,210.4	2,320.2	3,204.6	0.00	0.00	
6,900.0	32.11	133.61	5,991.5	-2,247.1	2,358.7	3,257.7	0.00	0.00	
7,000.0	32.11	133.61	6,076.2	-2,283.8	2,397.2	3,310.9	0.00	0.00	
7,100.0	32.11	133.61	6,160.9	-2,320.4	2,435.7	3,364.0	0.00	0.00	
7,200.0	32.11	133.61	6,245.6	-2,357.1	2,474.2	3,417.2	0.00	0.00	
7,300.0	32.11	133.61	6,330.3	-2,393.8	2,512.7	3,470.3	0.00	0.00	
7,400.0	32.11	133.61	6,415.0	-2,430.4	2,551.1	3,523.5	0.00	0.00	
7,500.0	32.11	133.61	6,499.7	-2,467.1	2,589.6	3,576.6	0.00	0.00	
7,600.0	32.11	133.61	6,584.4	-2,503.7	2,628.1	3,629.8	0.00	0.00	
7,606.5	32.11	133.61	6,589.9	-2,506.1	2,630.6	3,633.2	0.00	0.00	Start Drop -3.00
7,700.0	29.30	133.61	6,670.3	-2,539.0	2,665.2	3,681.0	3.00	-3.00	
7,800.0	26.30	133.61	6,758.7	-2,571.2	2,698.9	3,727.6	3.00	-3.00	
7,900.0	23.30	133.61	6,849.5	-2,600.1	2,729.3	3,769.6	3.00	-3.00	
8,000.0	20.30	133.61	6,942.3	-2,625.8	2,756.2	3,806.7	3.00	-3.00	
8,041.9	19.05	133.61	6,981.8	-2,635.5	2,766.4	3,820.8	3.00	-3.00	E34 496 UWF03B-03 TGT
8,100.0	17.30	133.61	7,037.0	-2,648.0	2,779.5	3,838.9	3.00	-3.00	
8,200.0	14.30	133.61	7,133.2	-2,666.8	2,799.2	3,866.1	3.00	-3.00	
8,300.0	11.30	133.61	7,230.7	-2,682.1	2,815.3	3,888.3	3.00	-3.00	
8,400.0	8.30	133.61	7,329.2	-2,693.8	2,827.6	3,905.3	3.00	-3.00	
8,500.0	5.30	133.61	7,428.5	-2,702.0	2,836.2	3,917.2	3.00	-3.00	
8,600.0	2.30	133.61	7,528.3	-2,706.5	2,841.0	3,923.8	3.00	-3.00	
8,676.7	0.00	0.00	7,605.0	-2,707.6	2,842.1	3,925.3	3.00	-3.00	EOD; Inc=0° - WILLIAMS_FORK_TVD - 8515E
8,700.0	0.06	239.47	7,628.3	-2,707.6	2,842.1	3,925.3	0.25	0.25	
8,773.1	0.24	239.47	7,701.4	-2,707.7	2,841.9	3,925.3	0.25	0.25	
8,800.0	0.24	239.47	7,728.3	-2,707.8	2,841.8	3,925.3	0.00	0.00	
8,900.0	0.24	239.47	7,828.3	-2,708.0	2,841.5	3,925.1	0.00	0.00	
9,000.0	0.24	239.47	7,928.3	-2,708.2	2,841.1	3,925.0	0.00	0.00	
9,100.0	0.24	239.47	8,028.3	-2,708.4	2,840.7	3,924.9	0.00	0.00	

Planning Report

Database:	USA EDM 5000 Multi Users DB	Local Co-ordinate Reference:	Well 8515E-34 E34 496 (was UWF03B-0)
Company:	EnCana Oil & Gas (USA) Inc	TVD Reference:	WELL @ 8324.0ft (Original Well Elev)
Project:	Story Gulch	MD Reference:	WELL @ 8324.0ft (Original Well Elev)
Site:	S33-T4S-R96W (E34 496)	North Reference:	True
Well:	8515E-34 E34 496 (was UWF03B-0)	Survey Calculation Method:	Minimum Curvature
Wellbore:	DD		
Design:	Plan #2		

Planned Survey									
Measured Depth (ft)	Inclination (°)	Azimuth (°)	Vertical Depth (ft)	+N/-S (ft)	+E/-W (ft)	Vertical Section (ft)	Dogleg Rate (°/100ft)	Build Rate (°/100ft)	Comments / Formations
9,200.0	0.24	239.47	8,128.3	-2,708.6	2,840.4	3,924.8	0.00	0.00	
9,300.0	0.24	239.47	8,228.3	-2,708.8	2,840.0	3,924.7	0.00	0.00	
9,400.0	0.24	239.47	8,328.3	-2,709.0	2,839.7	3,924.6	0.00	0.00	
9,500.0	0.24	239.47	8,428.3	-2,709.3	2,839.3	3,924.5	0.00	0.00	
9,600.0	0.24	239.47	8,528.3	-2,709.5	2,838.9	3,924.3	0.00	0.00	
9,700.0	0.24	239.47	8,628.3	-2,709.7	2,838.6	3,924.2	0.00	0.00	
9,800.0	0.24	239.47	8,728.3	-2,709.9	2,838.2	3,924.1	0.00	0.00	
9,900.0	0.24	239.47	8,828.3	-2,710.1	2,837.8	3,924.0	0.00	0.00	
10,000.0	0.24	239.47	8,928.3	-2,710.3	2,837.5	3,923.9	0.00	0.00	
10,100.0	0.24	239.47	9,028.3	-2,710.5	2,837.1	3,923.8	0.00	0.00	
10,200.0	0.24	239.47	9,128.3	-2,710.8	2,836.8	3,923.7	0.00	0.00	
10,300.0	0.24	239.47	9,228.3	-2,711.0	2,836.4	3,923.6	0.00	0.00	
10,400.0	0.24	239.47	9,328.3	-2,711.2	2,836.0	3,923.4	0.00	0.00	
10,500.0	0.24	239.47	9,428.3	-2,711.4	2,835.7	3,923.3	0.00	0.00	
10,600.0	0.24	239.47	9,528.3	-2,711.6	2,835.3	3,923.2	0.00	0.00	
10,700.0	0.24	239.47	9,628.3	-2,711.8	2,834.9	3,923.1	0.00	0.00	
10,800.0	0.24	239.47	9,728.3	-2,712.0	2,834.6	3,923.0	0.00	0.00	
10,900.0	0.24	239.47	9,828.2	-2,712.2	2,834.2	3,922.9	0.00	0.00	
11,000.0	0.24	239.47	9,928.2	-2,712.5	2,833.9	3,922.8	0.00	0.00	
11,100.0	0.24	239.47	10,028.2	-2,712.7	2,833.5	3,922.7	0.00	0.00	
11,200.0	0.24	239.47	10,128.2	-2,712.9	2,833.1	3,922.5	0.00	0.00	
11,300.0	0.24	239.47	10,228.2	-2,713.1	2,832.8	3,922.4	0.00	0.00	
11,400.0	0.24	239.47	10,328.2	-2,713.3	2,832.4	3,922.3	0.00	0.00	
11,500.0	0.24	239.47	10,428.2	-2,713.5	2,832.1	3,922.2	0.00	0.00	
11,600.0	0.24	239.47	10,528.2	-2,713.7	2,831.7	3,922.1	0.00	0.00	
11,700.0	0.24	239.47	10,628.2	-2,714.0	2,831.3	3,922.0	0.00	0.00	
11,780.8	0.24	239.47	10,709.0	-2,714.1	2,831.0	3,921.9	0.00	0.00	CAMEO_TVD
11,800.0	0.24	239.47	10,728.2	-2,714.2	2,831.0	3,921.9	0.00	0.00	
11,900.0	0.24	239.47	10,828.2	-2,714.4	2,830.6	3,921.8	0.00	0.00	
12,000.0	0.24	239.47	10,928.2	-2,714.6	2,830.2	3,921.6	0.00	0.00	
12,100.0	0.24	239.47	11,028.2	-2,714.8	2,829.9	3,921.5	0.00	0.00	
12,200.0	0.24	239.47	11,128.2	-2,715.0	2,829.5	3,921.4	0.00	0.00	
12,300.0	0.24	239.47	11,228.2	-2,715.2	2,829.2	3,921.3	0.00	0.00	
12,380.8	0.24	239.47	11,309.0	-2,715.4	2,828.9	3,921.2	0.00	0.00	ROLLINS_TVD
12,400.0	0.24	239.47	11,328.2	-2,715.4	2,828.8	3,921.2	0.00	0.00	
12,500.0	0.24	239.47	11,428.2	-2,715.7	2,828.4	3,921.1	0.00	0.00	
12,600.0	0.24	239.47	11,528.2	-2,715.9	2,828.1	3,921.0	0.00	0.00	
12,639.8	0.24	239.47	11,568.0	-2,716.0	2,827.9	3,920.9	0.00	0.00	COZZETTE_TVD
12,700.0	0.24	239.47	11,628.2	-2,716.1	2,827.7	3,920.8	0.00	0.00	
12,800.0	0.24	239.47	11,728.2	-2,716.3	2,827.3	3,920.7	0.00	0.00	
12,812.8	0.24	239.47	11,741.0	-2,716.3	2,827.3	3,920.7	0.00	0.00	CORCORAN_TVD
12,900.0	0.24	239.47	11,828.2	-2,716.5	2,827.0	3,920.6	0.00	0.00	
13,000.0	0.24	239.47	11,928.2	-2,716.7	2,826.6	3,920.5	0.00	0.00	
13,100.0	0.24	239.47	12,028.2	-2,716.9	2,826.3	3,920.4	0.00	0.00	
13,108.8	0.24	239.47	12,037.0	-2,717.0	2,826.2	3,920.4	0.00	0.00	UPPER_SEGO_TVD
13,199.7	0.24	239.47	12,127.9	-2,717.2	2,825.9	3,920.3	0.00	0.00	E34 496 UWF03B-03 PBHL
13,200.0	0.24	239.47	12,128.2	-2,717.2	2,825.9	3,920.3	0.00	0.00	
13,258.8	0.24	239.47	12,187.0	-2,717.3	2,825.7	3,920.2	0.00	0.00	SEGO_BASE_TARGET_TVD
13,300.0	0.24	239.47	12,228.2	-2,717.4	2,825.5	3,920.2	0.00	0.00	
13,400.0	0.24	239.47	12,328.2	-2,717.6	2,825.2	3,920.1	0.00	0.00	
13,408.8	0.24	239.47	12,337.0	-2,717.6	2,825.1	3,920.0	0.00	0.00	Drillers TD @ 12337' TVD - 8515E-34 E34 496
13,500.0	0.24	239.47	12,428.2	-2,717.8	2,824.8	3,919.9	0.00	0.00	

Planning Report

Database:	USA EDM 5000 Multi Users DB	Local Co-ordinate Reference:	Well 8515E-34 E34 496 (was UWF03B-0)
Company:	EnCana Oil & Gas (USA) Inc	TVD Reference:	WELL @ 8324.0ft (Original Well Elev)
Project:	Story Gulch	MD Reference:	WELL @ 8324.0ft (Original Well Elev)
Site:	S33-T4S-R96W (E34 496)	North Reference:	True
Well:	8515E-34 E34 496 (was UWF03B-0)	Survey Calculation Method:	Minimum Curvature
Wellbore:	DD		
Design:	Plan #2		

Planned Survey

Measured Depth (ft)	Inclination (°)	Azimuth (°)	Vertical Depth (ft)	+N/-S (ft)	+E/-W (ft)	Vertical Section (ft)	Dogleg Rate (°/100ft)	Build Rate (°/100ft)	Comments / Formations
13,558.8	0.24	239.47	12,487.0	-2,717.9	2,824.6	3,919.9	0.00	0.00	Permit TD @ 12487' TVD

Targets

Target Name - hit/miss target - Shape	Dip Angle (°)	Dip Dir. (°)	TVD (ft)	+N/-S (ft)	+E/-W (ft)	Northing (ft)	Easting (ft)	Latitude	Longitude
E34 496 UWF03B-03 PE - plan misses target center by 2718.8ft at 13199.7ft MD (12127.9 TVD, -2717.2 N, 2825.9 E) - Rectangle (sides W30.0 H50.0 D0.0)	0.00	0.00	12,117.0	-3,321.8	175.2	1,672,764.18	2,251,099.00	39° 39' 1.53 N	108° 9' 36.08 W
E34 496 UWF03B-03 TC - plan misses target center by 2705.8ft at 7964.5ft MD (6909.2 TVD, -2617.1 N, 2747.1 E) - Point	0.00	0.00	7,458.0	-3,311.8	190.2	1,672,773.76	2,251,114.28	39° 39' 1.63 N	108° 9' 35.89 W
8515E-34 E34 496 TGT - plan hits target center - Point	0.00	0.00	7,605.0	-2,707.6	2,842.1	1,673,300.04	2,253,782.74	39° 39' 7.60 N	108° 9' 1.98 W
8515E-34 E34 496 PBH - plan hits target center - Rectangle (sides W30.0 H50.0 D0.0)	0.00	0.00	12,337.0	-2,717.6	2,825.1	1,673,290.54	2,253,765.49	39° 39' 7.50 N	108° 9' 2.20 W

Formations

Measured Depth (ft)	Vertical Depth (ft)	Name	Lithology	Dip (°)	Dip Direction (°)
1,180.4	1,144.0	A_GROOVE_TVD			
1,362.6	1,301.0	B_GROOVE_TVD			
1,376.8	1,313.0	B_GROOVE_BASE_TVD			
2,438.1	2,212.0	GARDEN_GULCH_TVD			
3,667.1	3,253.0	WASATCH_FM_TVD			
6,189.9	5,390.0	WASATCH_G_TVD			
8,676.7	7,605.0	WILLIAMS_FORK_TVD			
11,780.8	10,709.0	CAMEO_TVD			
12,380.8	11,309.0	ROLLINS_TVD			
12,639.8	11,568.0	COZZETTE_TVD			
12,812.8	11,741.0	CORCORAN_TVD			
13,108.8	12,037.0	UPPER_SEGO_TVD			
13,258.8	12,187.0	SEGO_BASE_TARGET_TVD			

Planning Report

Database:	USA EDM 5000 Multi Users DB	Local Co-ordinate Reference:	Well 8515E-34 E34 496 (was UWF03B-0)
Company:	EnCana Oil & Gas (USA) Inc	TVD Reference:	WELL @ 8324.0ft (Original Well Elev)
Project:	Story Gulch	MD Reference:	WELL @ 8324.0ft (Original Well Elev)
Site:	S33-T4S-R96W (E34 496)	North Reference:	True
Well:	8515E-34 E34 496 (was UWF03B-0)	Survey Calculation Method:	Minimum Curvature
Wellbore:	DD		
Design:	Plan #2		

Plan Annotations

Measured Depth (ft)	Vertical Depth (ft)	Local Coordinates		Comment
		+N/-S (ft)	+E/-W (ft)	
250.0	250.0	0.0	0.0	KOP @ 250'
1,320.2	1,265.1	-201.5	211.5	EOB; Inc=32.11°
7,606.5	6,589.9	-2,506.1	2,630.6	Start Drop -3.00
8,676.7	7,605.0	-2,707.6	2,842.1	EOD; Inc=0°
13,408.8	12,337.0	-2,707.7	2,841.9	Drillers TD @ 12337' TVD
13,558.8	12,487.0	-2,717.6	2,825.1	Permit TD @ 12487' TVD