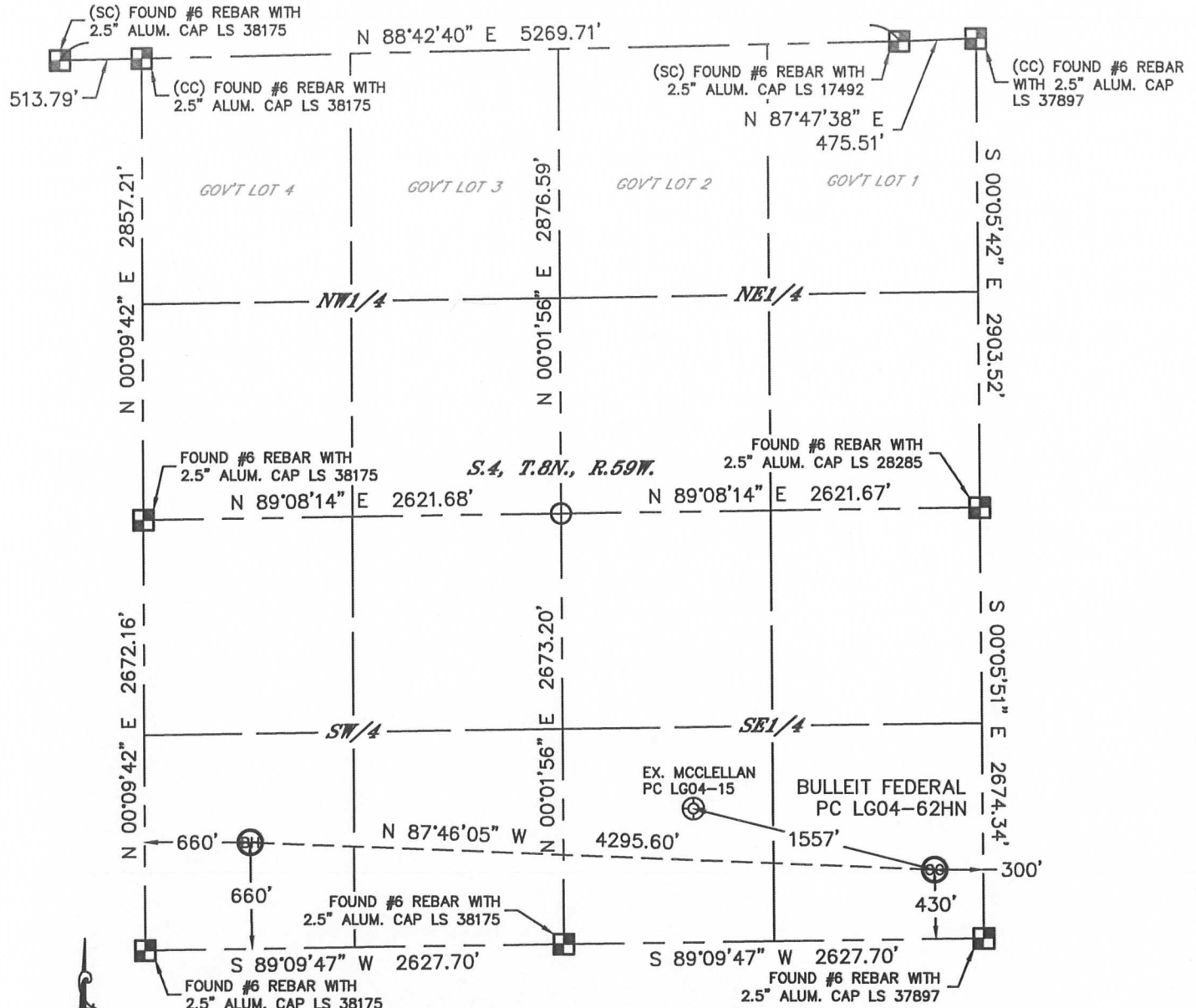


WELL LOCATION CERTIFICATE

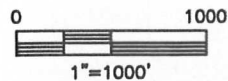
THIS MAP DOES NOT REPRESENT A BOUNDARY SURVEY

SECTION: 4
TOWNSHIP: 8N
RANGE: 59W



In accordance with a request from Nate McCorkell with Noble Energy Inc. Lat40°, Inc. has determined the surface location of the BULLEIT FEDERAL PC LG04-62HN to be 430' from the SOUTH line and 300' from the EAST line and the bottom hole to be 660' from the SOUTH line and 660' from the WEST line as measured at right angles from the section lines of Section 4, Township 8 North, Range 59 West of the Sixth Principal Meridian, County of Weld, State of Colorado.

I hereby state that this Well Location Certificate was prepared by me, or under my direct supervision, that the fieldwork was completed on 9/17/2012, for and on behalf of Noble Energy Inc. That this is not a Land Survey Plat or an Improvement Survey Plat, and that it is not to be relied upon for establishment of fence, building, or other future improvement lines.



NOTE:

- 1) Bearings shown are Grid Bearings of the Colorado State Plane Coordinate System, North Zone, North American Datum 1983/2007. The lineal dimensions as contained herein are based upon the "U.S. Survey Foot."
- 2) Ground elevations are based on an observed GPS elevation (NAVD 1988 DATUM).
- 3) NEAREST EXISTING WELL: MCCLELLAN PC LG04-15, 1557'
- 4) IMPROVEMENTS: See LOCATION DRAWING for all visible Improvements within 400' of disturbed area.
- 5) SURFACE USE: RANGELAND
- 6) INSTRUMENT OPERATOR: WYATT HALL

NOTE

According to Colorado law, you must commence any legal action based upon any defect in this W.L.C. within three years after you discover such defect. In no event, may any action based upon any defect in this survey be commenced more than ten years after the date of the certificate shown hereon. (13-80-105 C.R.S.)

LEGEND

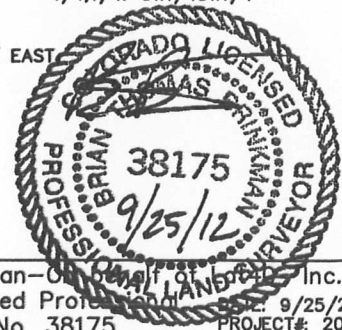
- = ALIQUOT MONUMENT AS DESCRIBED
- = CALCULATED POSITION

SURFACE LOCATION

LAT: 40.68528N
LONG: 103.97292W
PDOP: 1.4
ELEV: 4814'
1/4,1/4: SE1/4SE1/4
NEAREST PROPERTY LINE: 300' EAST

BOTTOM HOLE

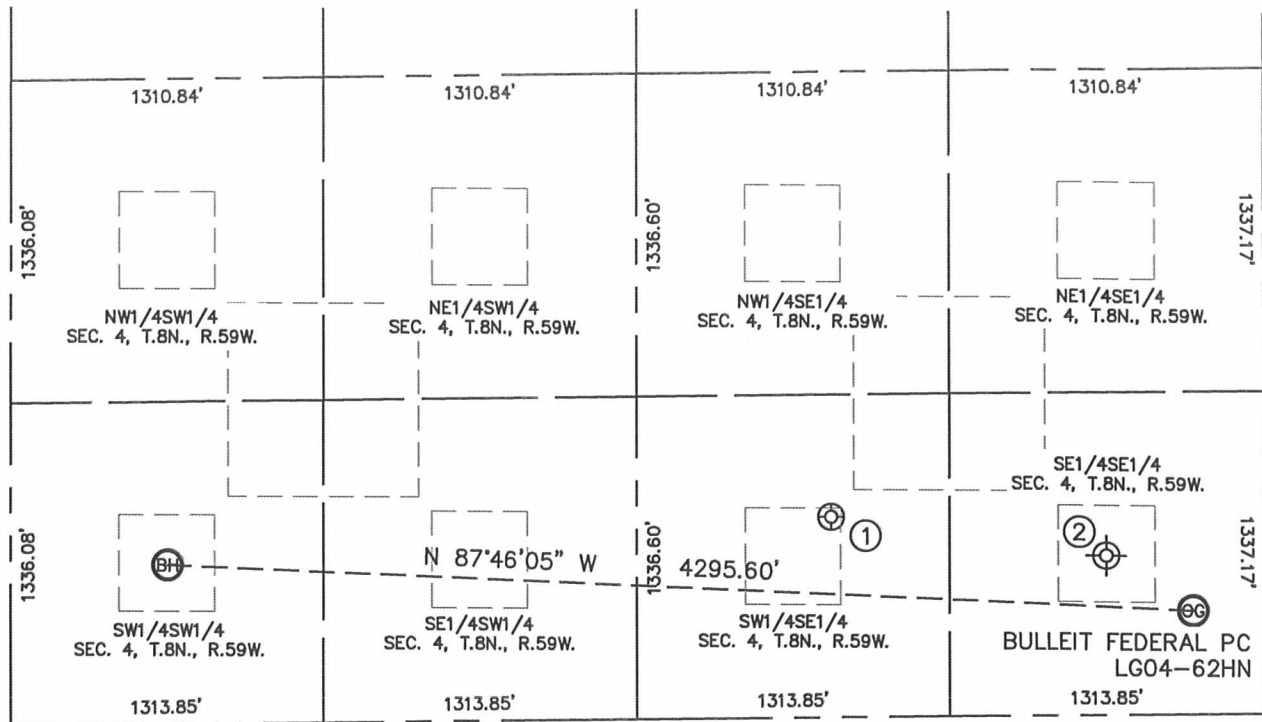
LAT: 40.68594N
LONG: 103.98838W
1/4,1/4: SW1/4SW1/4



SITE SKETCH

BULLEIT FEDERAL PC LG04-62HN

SECTION: 4
TOWNSHIP: 8N
RANGE: 59W



①

MCCLELLAN PC LG04-15
SW1/4SE1/4
830' FSL
1810' FEL
LAT-40.68638°N
LONG-103.97834°W
PDOP: 1.7
ELEV: 4843'

②

GREY 1
Drilled & Abandoned
SE1/4SE1/4 (COGCC)
660' FSL (COGCC)
660' FEL (COGCC)
LAT-40.685775°N (COGCC)
LONG-103.974179°W (COGCC)
PDOP: N/A
ELEV: 4808' (COGCC)

