

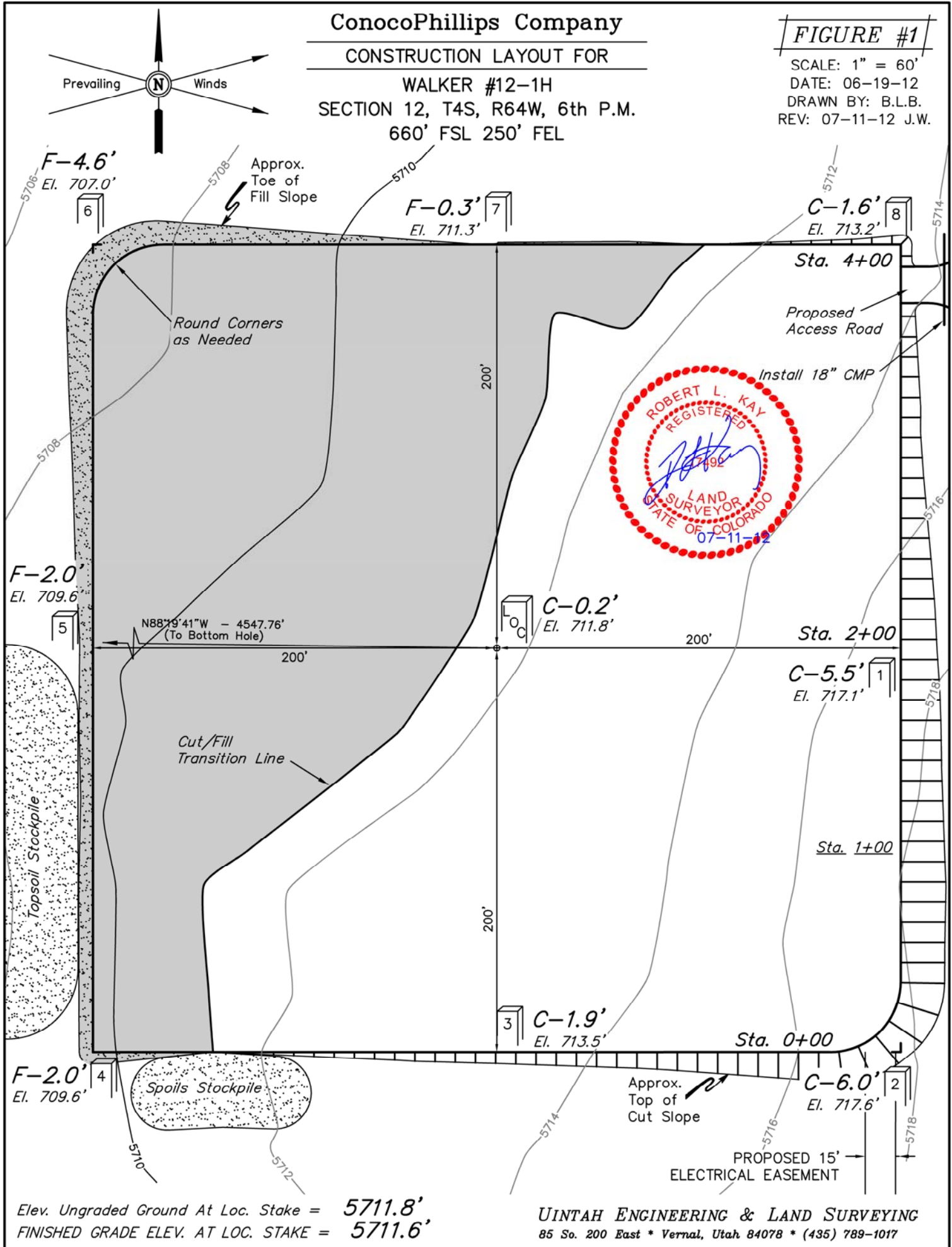
ConocoPhillips Company

CONSTRUCTION LAYOUT FOR

WALKER #12-1H
SECTION 12, T4S, R64W, 6th P.M.
660' FSL 250' FEL

FIGURE #1

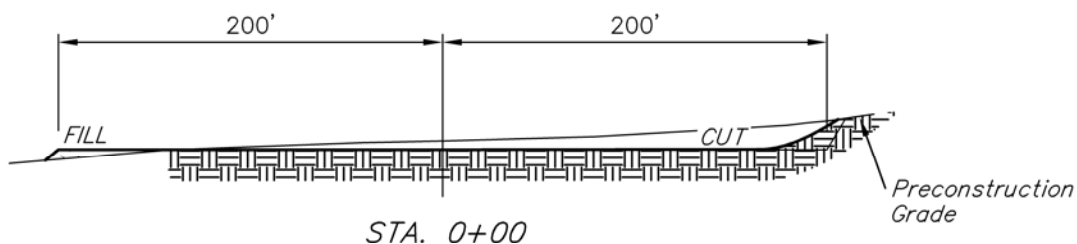
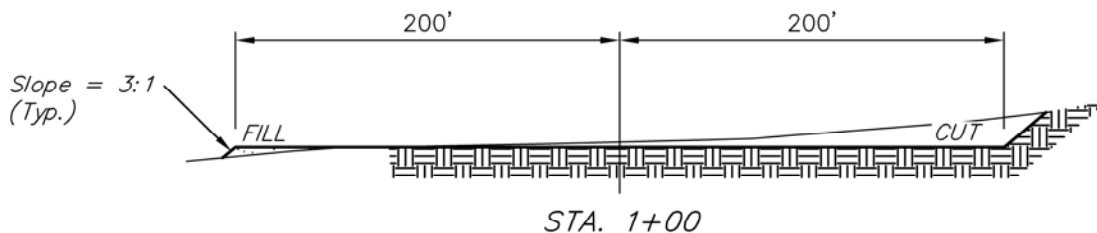
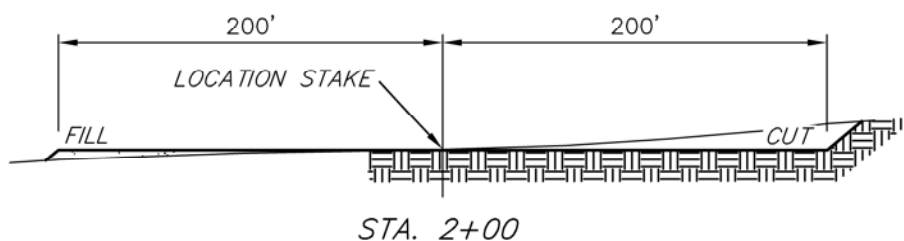
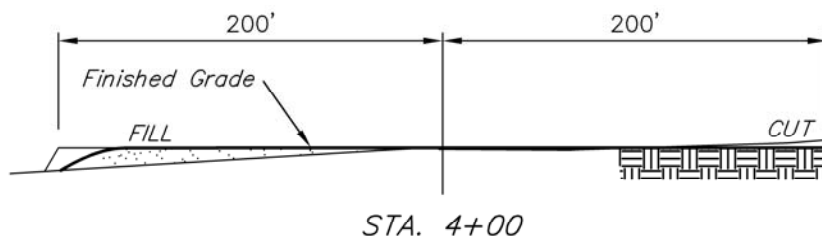
SCALE: 1" = 60'
DATE: 06-19-12
DRAWN BY: B.L.B.
REV: 07-11-12 J.W.



1" = 40'
X-Section
Scale
1" = 100'
DATE: 06-19-12
DRAWN BY: B.L.B.

ConocoPhillips Company
CONSTRUCTION LAYOUT CROSS SECTIONS FOR
WALKER #12-1H
SECTION 12, T4S, R64W, 6th P.M.
660' FSL 250' FEL

FIGURE #2



NOTE:

Topsoil should not be Stripped Below Finished Grade on Substructure Area.

APPROXIMATE ACREAGES
WELL SITE DISTURBANCE = ± 4.347 ACRES
ACCESS ROAD DISTURBANCE = ± 0.027 ACRES
TOTAL = ± 4.374 ACRES

* NOTE:
FILL QUANTITY INCLUDES 5% FOR COMPACTION

APPROXIMATE YARDAGES

(6") Topsoil Stripping = 3,220 Cu. Yds.
Remaining Location = 5,660 Cu. Yds.
TOTAL CUT = 8,880 CU.YDS.
FILL = 5,070 CU.YDS.

EXCESS MATERIAL = 3,810 Cu. Yds.
Topsoil = 3,220 Cu. Yds.

EXCESS UNBALANCE = 590 Cu. Yds.
(After Interim Rehabilitation)

UINTAH ENGINEERING & LAND SURVEYING
85 So. 200 East * Vernal, Utah 84078 * (435) 789-1017