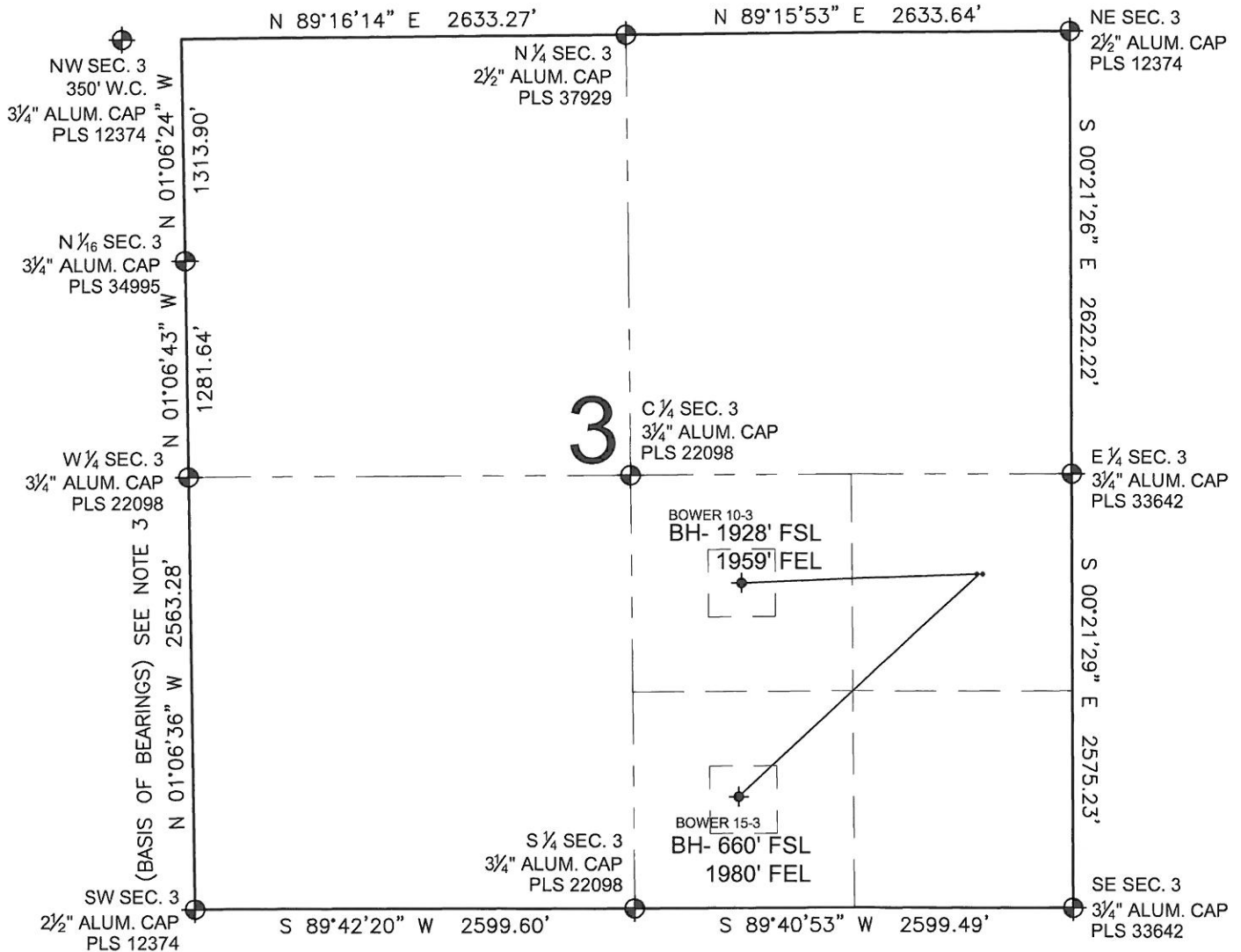


BOWER 15-3 PAD MULTI-WELL PLAN

SECTION 3, TOWNSHIP 6 NORTH, RANGE 67 WEST, 6TH P.M.



LEGEND

- ⊕ = EXISTING MONUMENT
- ⊙ = PROPOSED WELL
- ⬮ = BOTTOM HOLE
- ⬮ = EXISTING WELL
- BH= BOTTOM HOLE

NOTES:

1. THIS FIELD SURVEY CONFORMS TO THE MINIMUM STANDARDS SET BY THE C.O.G.C.C., RULE NO. 215
2. HORIZONTAL POSITIONS AND ORTHOMETRIC ELEVATIONS SHOWN AT THE WELL HEAD, ARE BASED ON GPS-RTK POSITIONS DERIVED FROM MINIMUM 2-HOUR STATIC OBSERVATIONS CORRECTED BY THE NATIONAL GEODETIC SURVEY ONLINE POSITIONING USER SERVICE, O.P.U.S. DATUM: HORIZONTAL = NAD83/2007, VERTICAL = NAVD88
3. THE BASIS OF BEARINGS ARE STATE PLANE COORDINATE SYSTEM GRID BEARINGS SHOWN HEREON BETWEEN THE DESCRIBED THE MONUMENTS SHOWN HEREON.
4. GRID DISTANCES ARE SHOWN, AS MEASURED IN THE FIELD, WITH TIES TO WELLS MEASURED PERPENDICULAR TO SECTION LINES.

NOTES:

BOWER 15-3 TO BE AT 1980' FSL, 550' FEL.
BOTTOM HOLE AT 660' FSL & 1980' FEL.
BOWER 10-3 TO BE AT 1980' FSL, 565' FEL.
BOTTOM HOLE AT 1928' FSL & 1959' FEL.

PREPARED BY:



BAYSWATER EXPLORATION & PRODUCTION, LLC

FIELD DATE: 08-01-12	PAD NAME: BOWER 15-3 PAD
DRAWING DATE: 09-13-12	SURFACE LOCATION: NE 1/4 SE 1/4, SEC. 3, T6N, R67W, 6TH P.M. WELD COUNTY, COLORADO
BY: SMF	CHECK: TJN

