

*The Road to Excellence Starts with Safety*

Sold To #: 300721	Ship To #: 2943852	Quote #:	Sales Order #: 9756428
Customer: WPX ENERGY ROCKY MOUNTAIN LLC-EBUS	Customer Rep: Oaks, Rick		
Well Name: RWF	Well #: 343-34	API/UWI #: 05-045-20449	
Field: Rulison	City (SAP): RIFLE	County/Parish: Garfield	State: Colorado
Lat: N 39.483 deg. OR N 39 deg. 28 min. 59.959 secs.	Long: W 107.863 deg. OR W -108 deg. 8 min. 13.43 secs.		
Contractor: NABORS 576	Rig/Platform Name/Num: NABORS 576		
Job Purpose: Cement Surface Casing			
Well Type: Development Well	Job Type: Cement Surface Casing		
Sales Person: MAYO, MARK	Srv Supervisor: KUKUS, CHRISTOPHER	MBU ID Emp #: 413952	

### Job Personnel

HES Emp Name	Exp Hrs	Emp #	HES Emp Name	Exp Hrs	Emp #	HES Emp Name	Exp Hrs	Emp #
BURKE, BRENDAN Patrick	0.0	487782	KUKUS, CHRISTOPHER A	0.0	413952	MILLER II, MATTHEW Reginald	0.0	425164

### Equipment

HES Unit #	Distance-1 way	HES Unit #	Distance-1 way	HES Unit #	Distance-1 way	HES Unit #	Distance-1 way
10744549	60 mile	10871245	60 mile	10995027	60 mile	11583931	60 mile
11808831	60 mile						

### Job Hours

Date	On Location Hours	Operating Hours	Date	On Location Hours	Operating Hours	Date	On Location Hours	Operating Hours

TOTAL Total is the sum of each column separately

### Job

Formation Name	Formation Depth (MD)	Top	Bottom	Form Type	Job depth MD	Job Depth TVD	Water Depth	Perforation Depth (MD)	From	To
				BHST	1184. ft	1184. ft				
						5. ft				

### Job Times

Date	Time	Time Zone
21 - Aug - 2012	07:15	MST
21 - Aug - 2012	11:30	MST
21 - Aug - 2012	16:01	MST
21 - Aug - 2012	17:02	MST
21 - Aug - 2012	18:30	MST

### Well Data

Description	New / Used	Max pressure psig	Size in	ID in	Weight lbm/ft	Thread	Grade	Top MD ft	Bottom MD ft	Top TVD ft	Bottom TVD ft
OPEN HOLE				13.5				.	1184.		
SURFACE CASING	New		9.625	9.001	32.3		I-80	.	1136.8		

### Tools and Accessories

Type	Size	Qty	Make	Depth	Type	Size	Qty	Make	Depth	Type	Size	Qty	Make
Guide Shoe					Packer					Top Plug			
Float Shoe					Bridge Plug					Bottom Plug			
Float Collar					Retainer					SSR plug set			
Insert Float										Plug Container			
Stage Tool										Centralizers			

### Miscellaneous Materials

Gelling Agt	Conc	Surfactant	Conc	Acid Type	Qty	Conc	%
Treatment Fld	Conc	Inhibitor	Conc	Sand Type	Size	Qty	

### Fluid Data

Stage/Plug #: 1									
Fluid #	Stage Type	Fluid Name	Qty	Qty uom	Mixing Density lbm/gal	Yield ft3/sk	Mix Fluid Gal/sk	Rate bbl/min	Total Mix Fluid Gal/sk

Stage/Plug #: 1

Stage/Plug #: 1									
Fluid #	Stage Type	Fluid Name	Qty	Qty uom	Mixing Density lbm/gal	Yield ft <sup>3</sup> /sk	Mix Fluid Gal/sk	Rate bbl/min	Total Mix Fluid Gal/sk
1	Fresh Water		20.00	bbl	8.33	.0	.0	.0	
2	Lead Cement	VERSACEM (TM) SYSTEM (452010)	160.0	sacks	12.3	2.38	13.75		13.75
	13.75 Gal	FRESH WATER							
3	Tail Cement	VERSACEM (TM) SYSTEM (452010)	160.0	sacks	12.8	2.11	11.75		11.75
	11.75 Gal	FRESH WATER							
4	Displacement Fluid		86.00	bbl	8.34	.0	.0	.0	
Calculated Values		Pressures		Volumes					
Displacement		Shut In: Instant		Lost Returns		Cement Slurry		Pad	
Top Of Cement		5 Min		Cement Returns		Actual Displacement		Treatment	
Frac Gradient		15 Min		Spacers		Load and Breakdown		Total Job	
Rates									
Circulating		Mixing		Displacement		Avg. Job			
Cement Left In Pipe		Amount	37.2 ft	Reason	Shoe Joint				
Frac Ring # 1 @	ID	Frac ring # 2 @	ID	Frac Ring # 3 @	ID	Frac Ring # 4 @	ID		
The Information Stated Herein Is Correct				Customer Representative Signature					



*The Road to Excellence Starts with Safety*

Sold To #: 300721	Ship To #: 2943852	Quote #:	Sales Order #: 9756428
Customer: WPX ENERGY ROCKY MOUNTAIN LLC-EBUS		Customer Rep: Oaks, Rick	
Well Name: RWF	Well #: 343-34	API/UWI #: 05-045-20449	
Field: Rulison	City (SAP): RIFLE	County/Parish: Garfield	State: Colorado
Legal Description:			
Lat: N 39.483 deg. OR N 39 deg. 28 min. 59.959 secs.		Long: W 107.863 deg. OR W -108 deg. 8 min. 13.43 secs.	
Contractor: NABORS 576		Rig/Platform Name/Num: NABORS 576	
Job Purpose: Cement Surface Casing			Ticket Amount:
Well Type: Development Well		Job Type: Cement Surface Casing	
Sales Person: MAYO, MARK		Srv Supervisor: KUKUS, CHRISTOPHER	MBU ID Emp #: 413952

Activity Description	Date/Time	Cht #	Rate bbl/min	Volume bbl		Pressure psig		Comments
				Stage	Total	Tubing	Casing	
Call Out	08/21/2012 07:15							ELITE # 8
Depart Yard Safety Meeting	08/21/2012 10:00							ALL HES EMPLOYEES
Arrive At Loc	08/21/2012 11:30							RIG RUNNING CASING HES CREW ARRIVED 1 HOUR EARLY DID NOT START CHARGE HOURS TILL ON LOCATION TIME HES CREW WAITED OFF LOCATION TILL RIG WAS DONE RUNNING CASING
Assessment Of Location Safety Meeting	08/21/2012 13:15							ALL HES EMPLOYEES
Pre-Rig Up Safety Meeting	08/21/2012 13:20							ALL HES EMPLOYEES
Rig-Up Equipment	08/21/2012 13:30							1 F-550 PICKUP 1 HT-400 PUMP TRUCK 1 660 BULK TRUCK
Pre-Job Safety Meeting	08/21/2012 15:50							ALL HES EMPLOYEES AND RIG CREW
Test Lines	08/21/2012 16:04					3840.0		PRESSURE TEST OK
Start Job	08/21/2012 16:09							TD: 1184 TP: 1136.75 SJ: 37.27 CSG: 9 5/8 32.3# OH: 13 1/2 MUD WT 9.7
Pump Spacer	08/21/2012 16:09		4	20	20		102.0	FRESH WATER SPACER
Activity Description	Date/Time	Cht #	Rate bbl/min	Volume bbl		Pressure psig		Comments
				Stage	Total	Tubing	Casing	

Sold To #: 300721

Ship To #: 2943852

Quote #:

Sales Order #:

9756428

SUMMIT Version: 7.3.0039

Wednesday, September 05, 2012 10:41:00

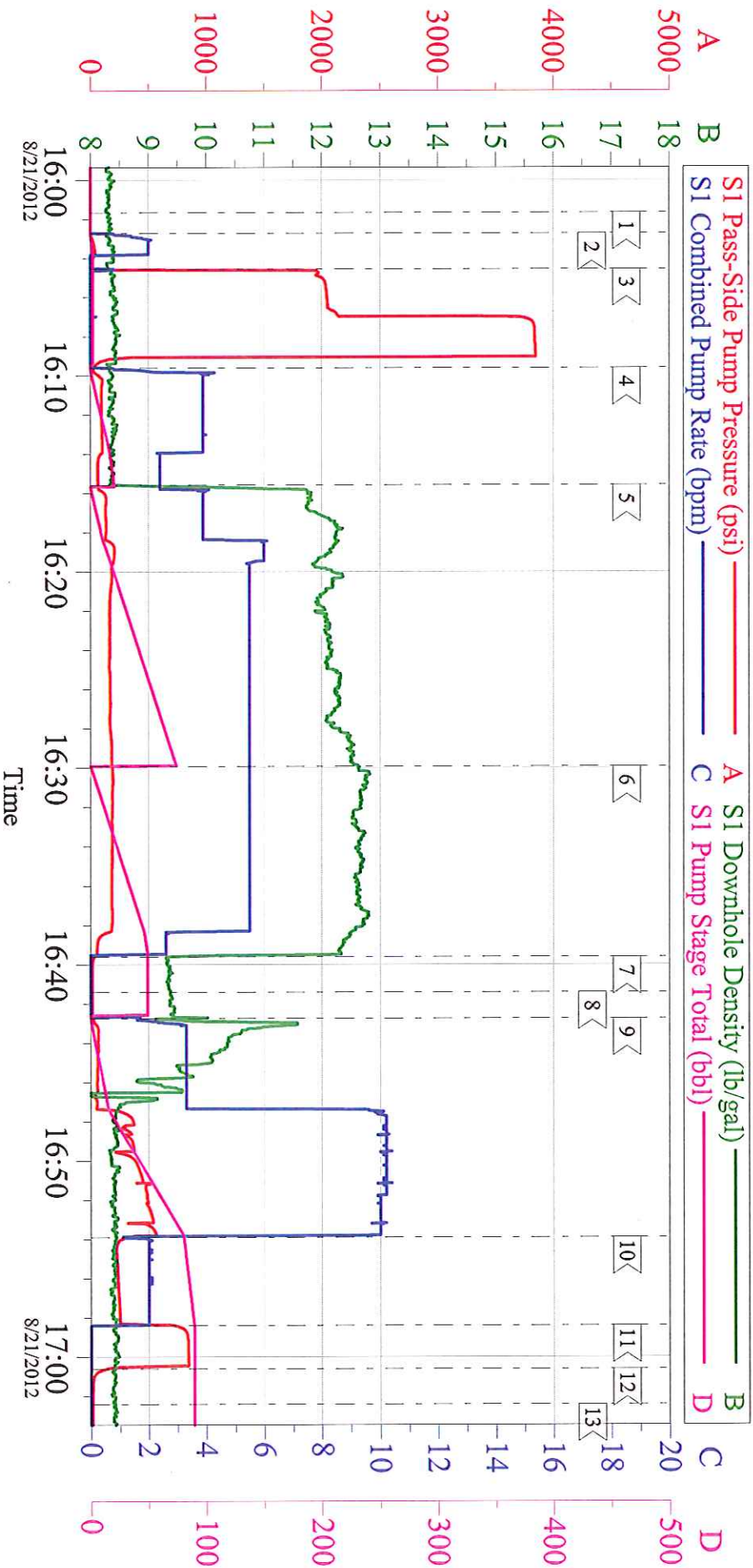
## Cementing Job Log

Pump Lead Cement	08/21/2012 16:15		5.5	67.8	67.8		185.0	160 SKS 12.3 PPG 2.38 YEILD 13.75 GAL / SK LEAD CEMENT WEIGHT VERIFIED VIA MUD SCALES THROUGH OUT LEAD CEMENT
Pump Tail Cement	08/21/2012 16:29		5.5	60.1	60.1		187.0	160 SKS 12.8 PPG 2.11 YEILD 11.75 GAL / SK TAIL CEMENT WEIGHT VERIFIED VIA MUD SCALES THROUGH OUT TAIL CEMENT
Shutdown	08/21/2012 16:39							
Drop Plug	08/21/2012 16:41							PLUG AWAY NO PROBLEMS
Pump Displacement	08/21/2012 16:42		10	86.5	86.5		560.0	FRESH WATER
Slow Rate	08/21/2012 16:53		2	76.5	76.5		280.0	SLOW RATE TO BUMP PLUG
Bump Plug	08/21/2012 16:58		2	86.5	86.5		260.0	BUMP PLUG @ 260 AND TOOK PRESSURE UP TO 840 PSI
Check Floats	08/21/2012 17:00							FLOATS HELD .5 BBL BACK TO DISPLACEMENT TANKS
End Job	08/21/2012 17:02							GOOD RETURNS THROUGH OUT CEMENT JOB 17 BBLS CEMENT TO SURFACE
Pre-Rig Down Safety Meeting	08/21/2012 17:10							ALL HES EMPLOYEES
Rig-Down Equipment	08/21/2012 17:15							
Pre-Convoy Safety Meeting	08/21/2012 18:00							ALL HES EMPLOYEES
Crew Leave Location	08/21/2012 18:30							THANKS FOR USING HALLIBURTON CEMENT CHRIS KUKUS AND CREW



# WPX - RWF 343-34

9.625 SURFACE



## Local Event Log

1 < START JOB	2 < FILL LINES	3 < TEST LINES	16:04:33
4 < PUMP H2O SPACER	5 < PUMP LEAD CEMENT	6 < PUMP TAIL CEMENT	16:29:55
7 < SHUT DOWN	8 < DROP PLUG	9 < PUMP H2O DISPLACEMENT	16:42:45
10 < SLOW RATE	11 < BUMP PLUG	12 < CHECK FLOATS	17:00:36
13 < END JOB			

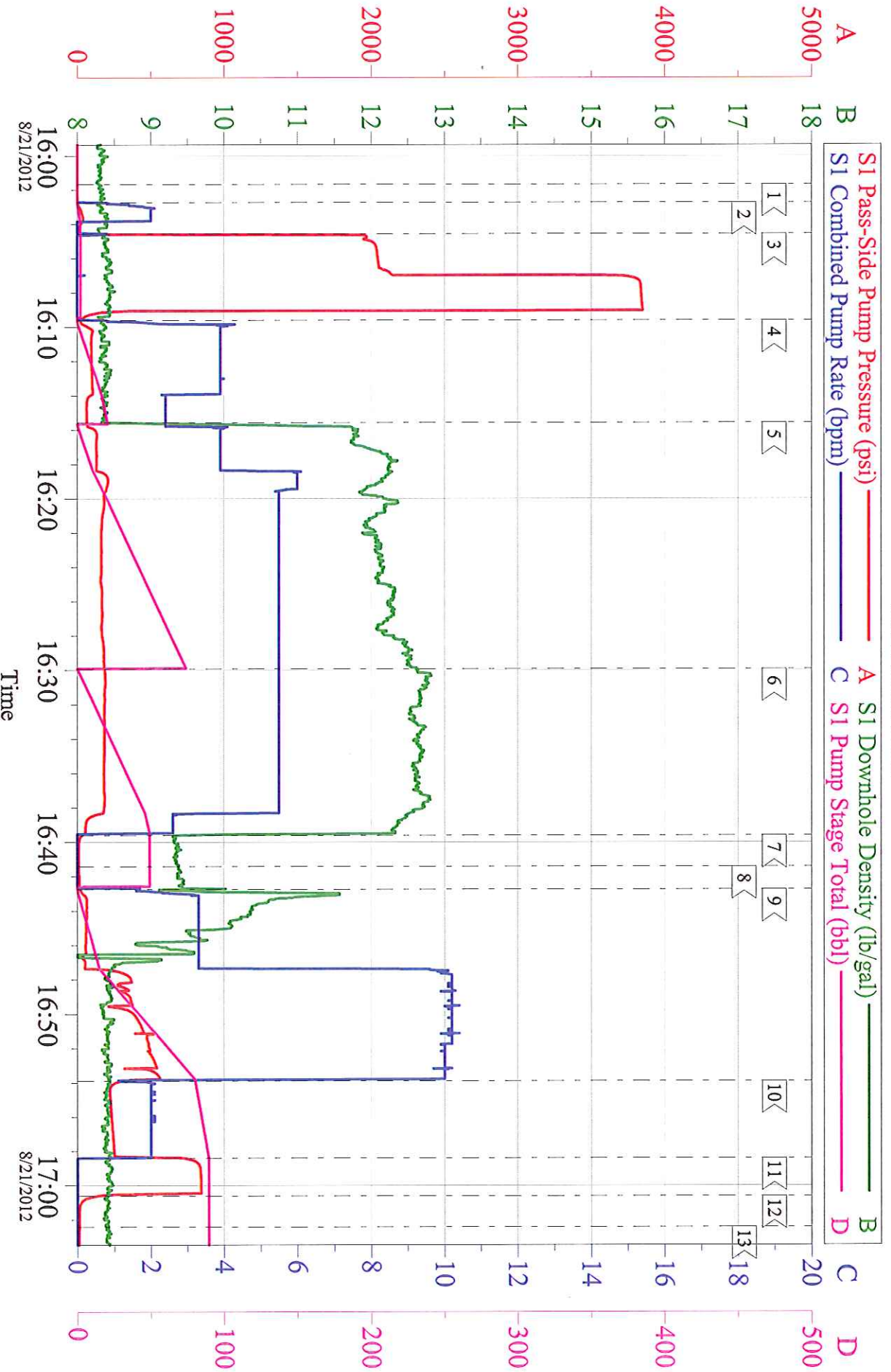
Customer: WPX  
Well Description: RWF 343-34  
Company Rep: RICK OAKS

Job Date: 21-Aug-2012  
Job Type: SURFACE  
Cement Supervisor: CHRIS KUKUS

Sales Order #: 9756428  
ADC Used: YES  
Elite #: 8: BRENDAN BURKE

# WPX - RWF 343-34

9.625 SURFACE



Customer: WPX  
Well Description: RWF 343-34  
Company Rep: RICK OAKS

Job Date: 21-Aug-2012  
Job Type: SURFACE  
Cement Supervisor: CHRIS KUKUS

Sales Order #: 9756428  
ADC Used: YES  
Elite #: 8: BRENDAN BURKE

OptiCem v6.4.10  
21-Aug-12 17:26