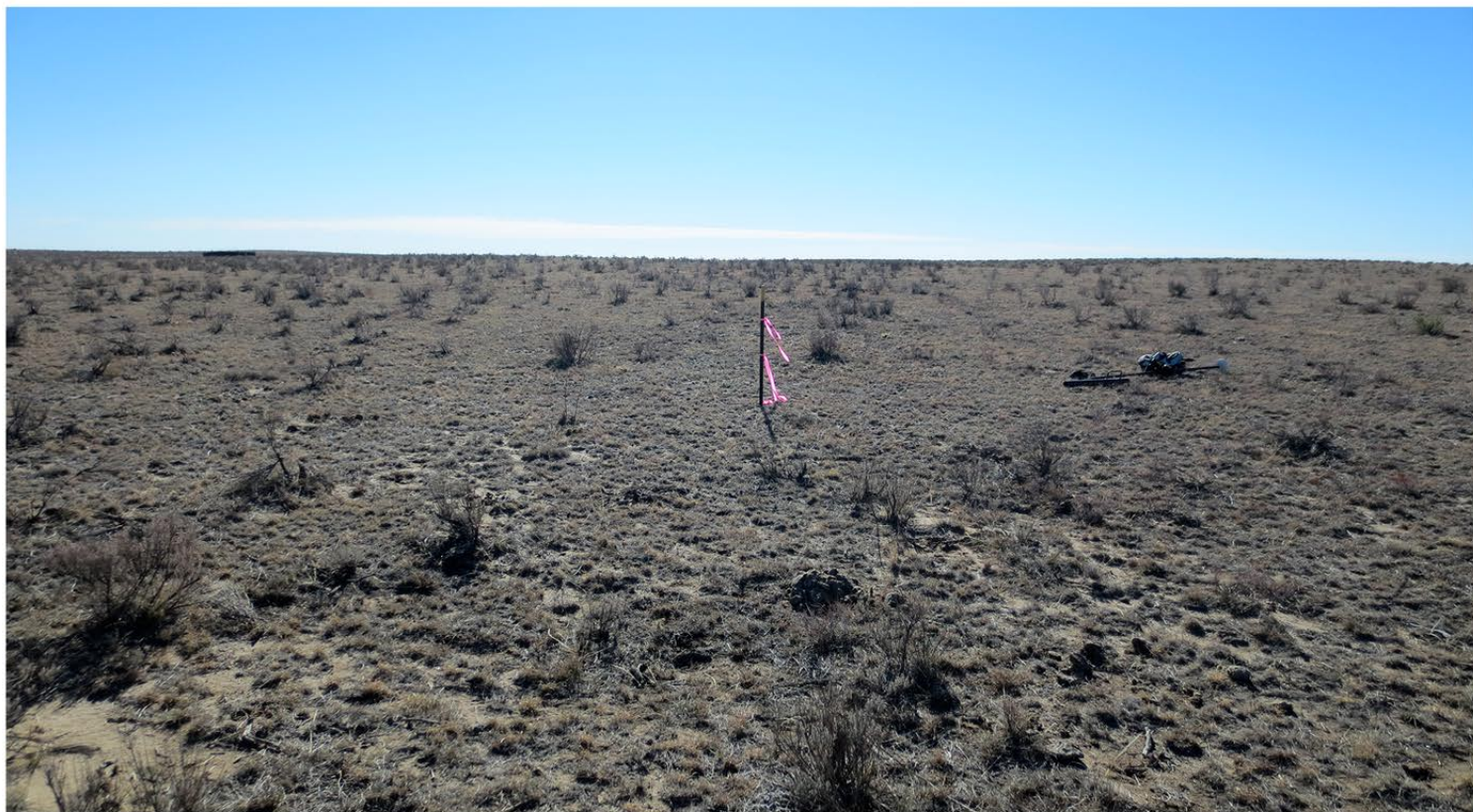


WITHERS A7-12S-54W-01H
SEC 7, T12S, R54W, 6TH PM, LINCOLN COUNTY, COLORADO
LOCATION PHOTOS - NOVEMBER 14, 2012

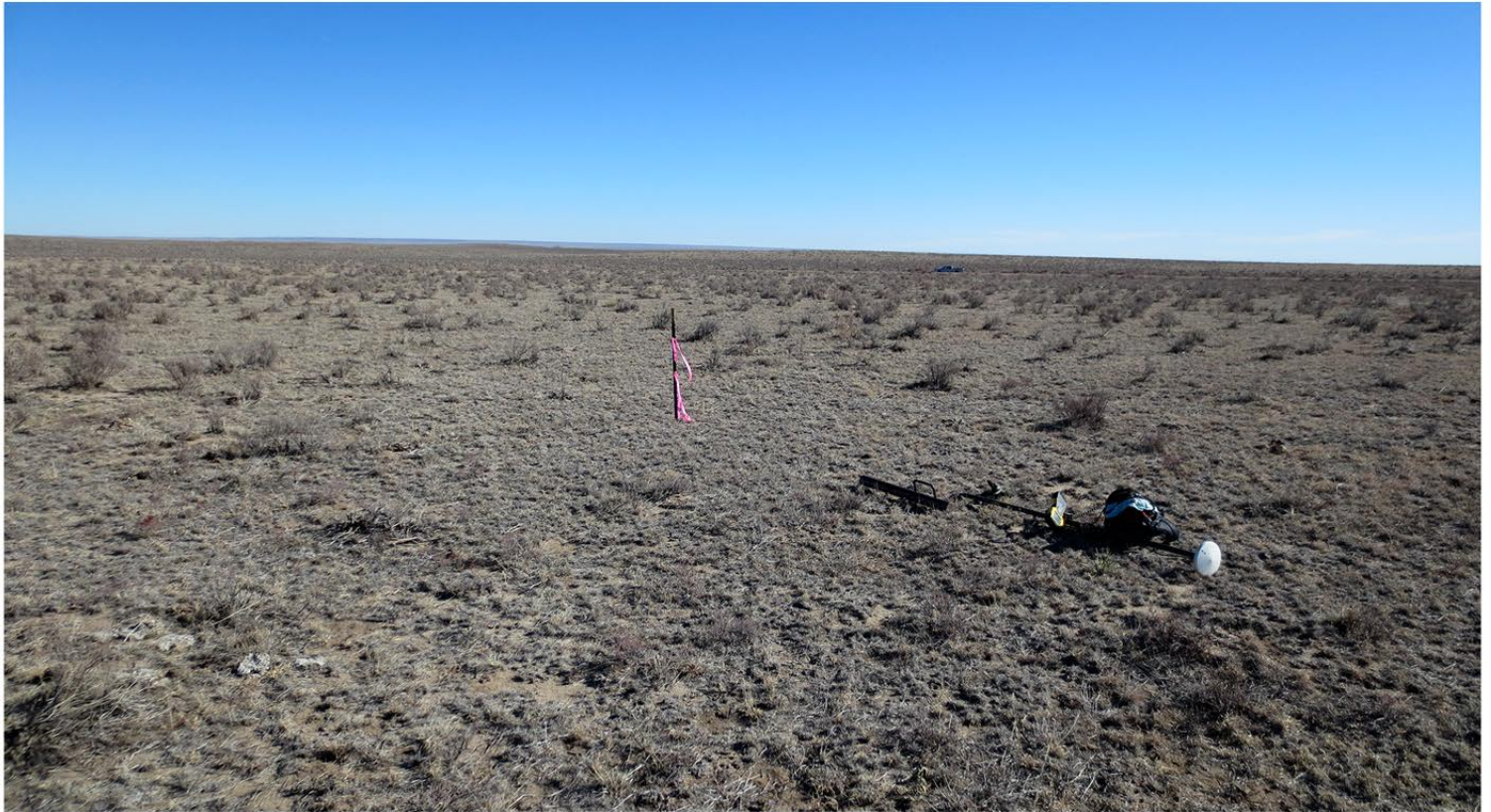


WELL PAD VIEW (LOOKING NORTH)

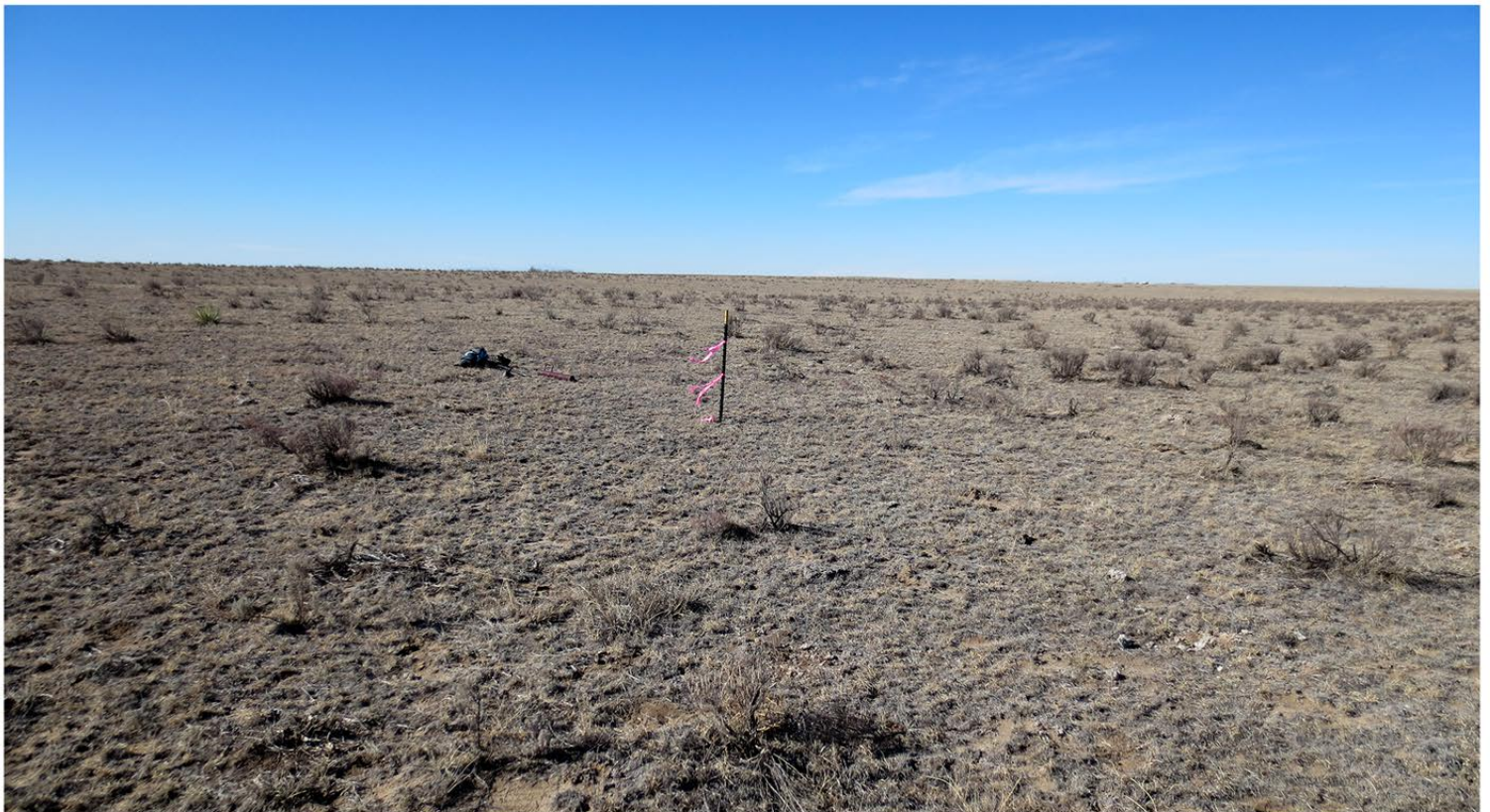


WELL PAD VIEW (LOOKING SOUTH)

WITHERS A7-12S-54W-01H
SEC 7, T12S, R54W, 6TH PM, LINCOLN COUNTY, COLORADO
LOCATION PHOTOS - NOVEMBER 14, 2012



WELL PAD VIEW (LOOKING EAST)



WELL PAD VIEW (LOOKING WEST)