

Continental Resources, Inc.

Weld County, CO

Sec. 5-T7N-R60W

Leggett 1-5H

Plan C Rev 0

Plan: Plan C Rev 0 Proposed Permit Only

Sperry Drilling Services

Proposal Report

13 December, 2012

Well Coordinates: 1,465,240.35 N, 3,381,677.81 E (40° 36' 08.50" N, 104° 07' 31.50" W)

Ground Level: 4,916.99 usft

Local Coordinate Origin:

Centered on Site Sec. 5-T7N-R60W

Viewing Datum:

WELL @ 4937.0usft (Original Well Elev)

TVDs to System:

N

North Reference:

True

Unit System:

Cont Res

Geodetic Scale Factor Applied

Version: 5000.1 Build: 61

HALLIBURTON

Project: Weld County, CO
Site: Sec. 5-T7N-R60W

Continental Resources, Inc.

HALLIBURTON
Sperry Drilling

Well: Leggett 1-5H

Wellbore: Plan C Rev 0

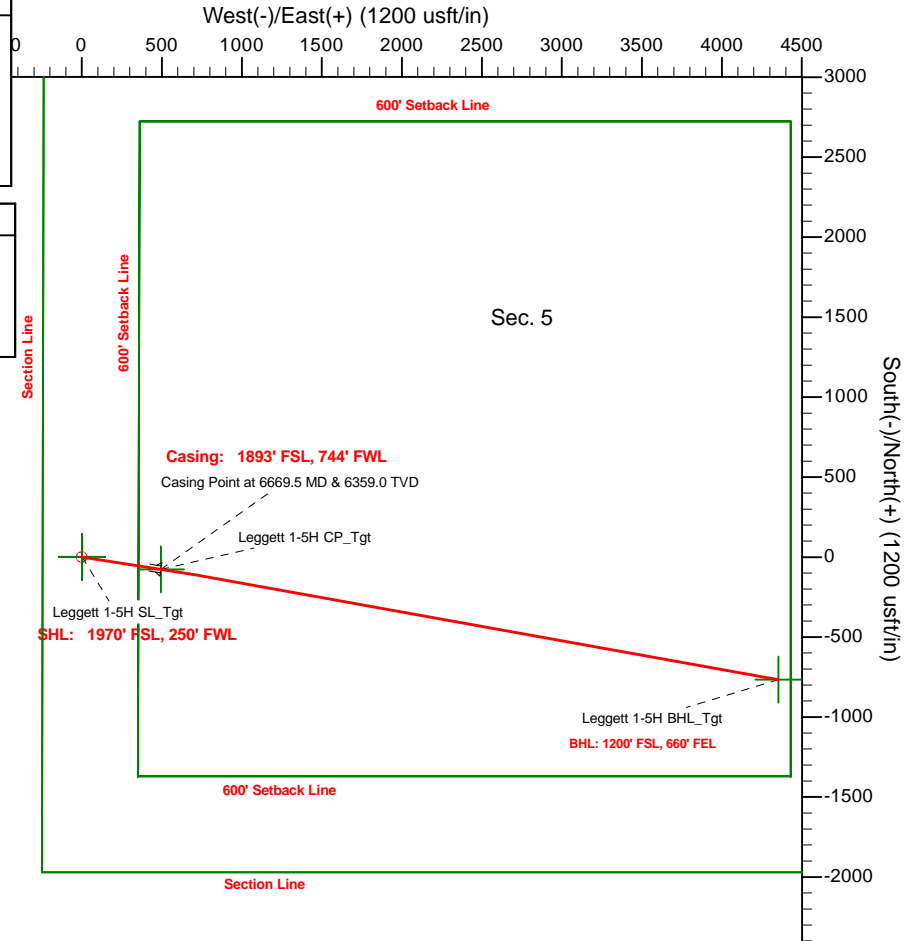
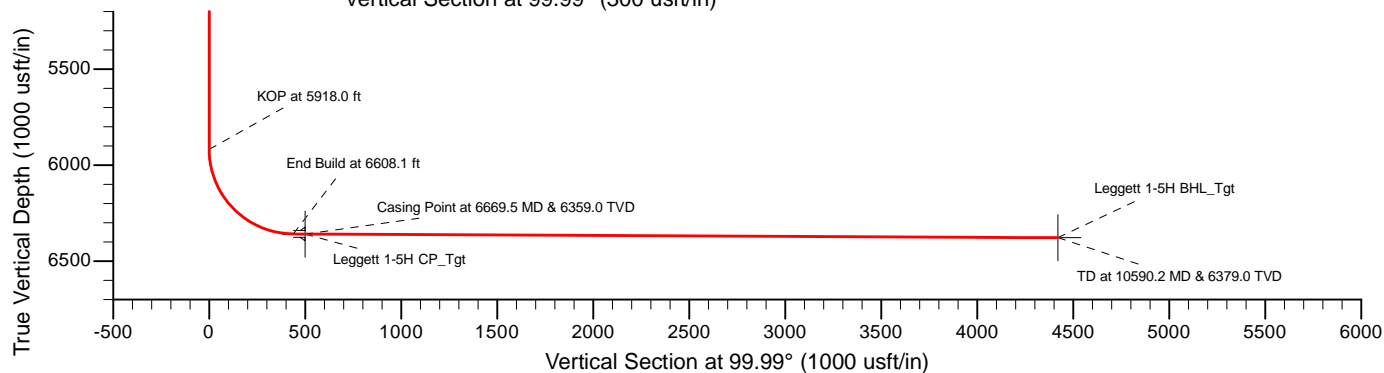
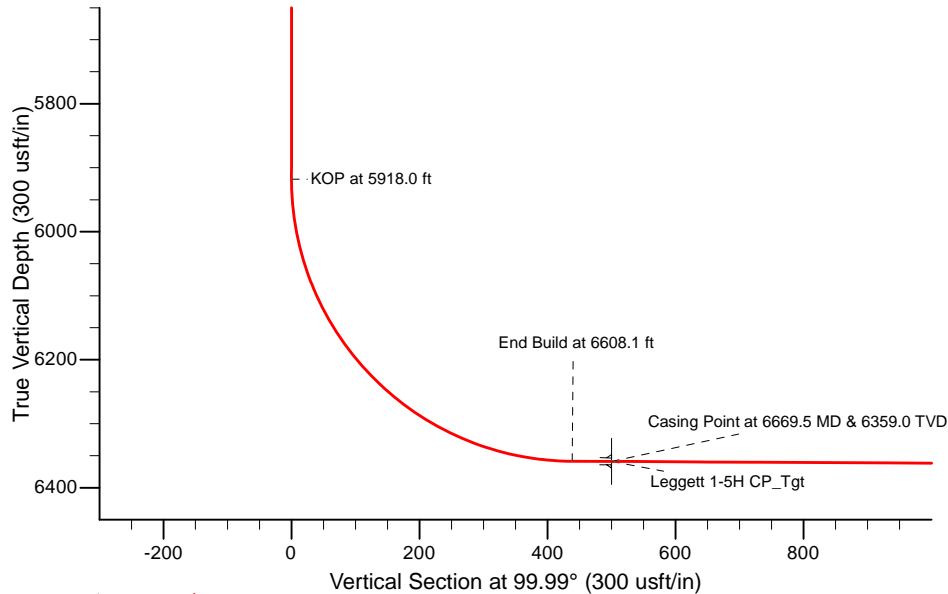
Design: Plan C Rev 0 Proposed Permit Only

SECTION DETAILS

Sec	MD	Inc	Azi	TVD	+N/-S	+E/-W	Dleg	TFace	VSect	Target
1	0.0	0.00	0.00	0.0	0.0	0.0	0.00	0.00	0.0	
2	5918.0	0.00	0.00	5918.0	0.0	0.0	0.00	0.00	0.0	
3	6608.1	89.71	98.86	6358.7	-67.5	433.3	13.00	98.86	438.4	
4	6669.5	89.71	98.86	6359.0	-77.0	494.0	0.00	0.00	499.9	Leggett 1-5H CP_Tgt
5	6819.5	89.71	98.86	6359.8	-100.1	642.2	0.00	0.00	649.8	
6	6886.2	89.71	100.19	6360.1	-111.1	707.9	2.00	90.07	716.5	
7	10590.2	89.71	100.19	6379.0	-766.5	4353.4	0.00	0.00	4420.4	Leggett 1-5H BHL_Tgt

WELLBORE TARGET DETAILS (MAP CO-ORDINATES AND LAT/LONG)

Name	TVD	+N/-S	+E/-W	Northing	Easting	Latitude	Longitude	Shape
Leggett 1-5H SL_Tgt	0.0	0.0	0.0	1465240.35	3381677.81	40.602362	-104.125416	Point
Sec 5 Setback Lines	0.0	0.0	0.0	1465240.35	3381677.81	40.602362	-104.125416	Polygon
Section 5 Lines	0.0	0.0	0.0	1465240.35	3381677.81	40.602362	-104.125416	Polygon
Leggett 1-5H CP_Tgt	6359.0	-77.0	494.0	1465171.02	3382172.93	40.602151	-104.123637	Point
Leggett 1-5H BHL_Tgt	6379.0	-766.5	4353.4	1464541.43	3386042.47	40.600257	-104.109739	Point



WELL DETAILS: Leggett 1-5H

Ground Level: 4917.0			
Northing	Easting	Latitude	Longitude
1465240.35	3381677.81	40.602362	-104.125416

Plan C Rev 0 Proposed Permit Only (Leggett 1-5H)

Created By: Lacy Taylor Date: 12/13/2012

Checked: _____ Date: _____

Plan Report for Leggett 1-5H - Plan C Rev 0 Proposed Permit Only

Measured Depth (usft)	Inclination (°)	Azimuth (°)	Vertical Depth (usft)	+N/-S (usft)	+E/-W (usft)	Vertical Section (usft)	Dogleg Rate (°/100usft)	Build Rate (°/100usft)	Turn Rate (°/100usft)	Toolface Azimuth (°)
0.0	0.00	0.00	0.0	0.0	0.0	0.0	0.00	0.00	0.00	0.00
100.0	0.00	0.00	100.0	0.0	0.0	0.0	0.00	0.00	0.00	0.00
200.0	0.00	0.00	200.0	0.0	0.0	0.0	0.00	0.00	0.00	0.00
300.0	0.00	0.00	300.0	0.0	0.0	0.0	0.00	0.00	0.00	0.00
400.0	0.00	0.00	400.0	0.0	0.0	0.0	0.00	0.00	0.00	0.00
500.0	0.00	0.00	500.0	0.0	0.0	0.0	0.00	0.00	0.00	0.00
600.0	0.00	0.00	600.0	0.0	0.0	0.0	0.00	0.00	0.00	0.00
700.0	0.00	0.00	700.0	0.0	0.0	0.0	0.00	0.00	0.00	0.00
800.0	0.00	0.00	800.0	0.0	0.0	0.0	0.00	0.00	0.00	0.00
900.0	0.00	0.00	900.0	0.0	0.0	0.0	0.00	0.00	0.00	0.00
1,000.0	0.00	0.00	1,000.0	0.0	0.0	0.0	0.00	0.00	0.00	0.00
1,100.0	0.00	0.00	1,100.0	0.0	0.0	0.0	0.00	0.00	0.00	0.00
1,200.0	0.00	0.00	1,200.0	0.0	0.0	0.0	0.00	0.00	0.00	0.00
1,300.0	0.00	0.00	1,300.0	0.0	0.0	0.0	0.00	0.00	0.00	0.00
1,400.0	0.00	0.00	1,400.0	0.0	0.0	0.0	0.00	0.00	0.00	0.00
1,500.0	0.00	0.00	1,500.0	0.0	0.0	0.0	0.00	0.00	0.00	0.00
1,600.0	0.00	0.00	1,600.0	0.0	0.0	0.0	0.00	0.00	0.00	0.00
1,700.0	0.00	0.00	1,700.0	0.0	0.0	0.0	0.00	0.00	0.00	0.00
1,800.0	0.00	0.00	1,800.0	0.0	0.0	0.0	0.00	0.00	0.00	0.00
1,900.0	0.00	0.00	1,900.0	0.0	0.0	0.0	0.00	0.00	0.00	0.00
2,000.0	0.00	0.00	2,000.0	0.0	0.0	0.0	0.00	0.00	0.00	0.00
2,100.0	0.00	0.00	2,100.0	0.0	0.0	0.0	0.00	0.00	0.00	0.00
2,200.0	0.00	0.00	2,200.0	0.0	0.0	0.0	0.00	0.00	0.00	0.00
2,300.0	0.00	0.00	2,300.0	0.0	0.0	0.0	0.00	0.00	0.00	0.00
2,400.0	0.00	0.00	2,400.0	0.0	0.0	0.0	0.00	0.00	0.00	0.00
2,500.0	0.00	0.00	2,500.0	0.0	0.0	0.0	0.00	0.00	0.00	0.00
2,600.0	0.00	0.00	2,600.0	0.0	0.0	0.0	0.00	0.00	0.00	0.00
2,700.0	0.00	0.00	2,700.0	0.0	0.0	0.0	0.00	0.00	0.00	0.00
2,800.0	0.00	0.00	2,800.0	0.0	0.0	0.0	0.00	0.00	0.00	0.00
2,900.0	0.00	0.00	2,900.0	0.0	0.0	0.0	0.00	0.00	0.00	0.00
3,000.0	0.00	0.00	3,000.0	0.0	0.0	0.0	0.00	0.00	0.00	0.00
3,100.0	0.00	0.00	3,100.0	0.0	0.0	0.0	0.00	0.00	0.00	0.00
3,200.0	0.00	0.00	3,200.0	0.0	0.0	0.0	0.00	0.00	0.00	0.00
3,300.0	0.00	0.00	3,300.0	0.0	0.0	0.0	0.00	0.00	0.00	0.00
3,400.0	0.00	0.00	3,400.0	0.0	0.0	0.0	0.00	0.00	0.00	0.00
3,500.0	0.00	0.00	3,500.0	0.0	0.0	0.0	0.00	0.00	0.00	0.00
3,600.0	0.00	0.00	3,600.0	0.0	0.0	0.0	0.00	0.00	0.00	0.00
3,700.0	0.00	0.00	3,700.0	0.0	0.0	0.0	0.00	0.00	0.00	0.00
3,800.0	0.00	0.00	3,800.0	0.0	0.0	0.0	0.00	0.00	0.00	0.00
3,900.0	0.00	0.00	3,900.0	0.0	0.0	0.0	0.00	0.00	0.00	0.00
4,000.0	0.00	0.00	4,000.0	0.0	0.0	0.0	0.00	0.00	0.00	0.00
4,100.0	0.00	0.00	4,100.0	0.0	0.0	0.0	0.00	0.00	0.00	0.00
4,200.0	0.00	0.00	4,200.0	0.0	0.0	0.0	0.00	0.00	0.00	0.00
4,300.0	0.00	0.00	4,300.0	0.0	0.0	0.0	0.00	0.00	0.00	0.00
4,400.0	0.00	0.00	4,400.0	0.0	0.0	0.0	0.00	0.00	0.00	0.00
4,500.0	0.00	0.00	4,500.0	0.0	0.0	0.0	0.00	0.00	0.00	0.00
4,600.0	0.00	0.00	4,600.0	0.0	0.0	0.0	0.00	0.00	0.00	0.00
4,700.0	0.00	0.00	4,700.0	0.0	0.0	0.0	0.00	0.00	0.00	0.00
4,800.0	0.00	0.00	4,800.0	0.0	0.0	0.0	0.00	0.00	0.00	0.00
4,900.0	0.00	0.00	4,900.0	0.0	0.0	0.0	0.00	0.00	0.00	0.00
5,000.0	0.00	0.00	5,000.0	0.0	0.0	0.0	0.00	0.00	0.00	0.00
5,100.0	0.00	0.00	5,100.0	0.0	0.0	0.0	0.00	0.00	0.00	0.00
5,200.0	0.00	0.00	5,200.0	0.0	0.0	0.0	0.00	0.00	0.00	0.00
5,300.0	0.00	0.00	5,300.0	0.0	0.0	0.0	0.00	0.00	0.00	0.00
5,400.0	0.00	0.00	5,400.0	0.0	0.0	0.0	0.00	0.00	0.00	0.00
5,500.0	0.00	0.00	5,500.0	0.0	0.0	0.0	0.00	0.00	0.00	0.00
5,600.0	0.00	0.00	5,600.0	0.0	0.0	0.0	0.00	0.00	0.00	0.00
5,700.0	0.00	0.00	5,700.0	0.0	0.0	0.0	0.00	0.00	0.00	0.00
5,800.0	0.00	0.00	5,800.0	0.0	0.0	0.0	0.00	0.00	0.00	0.00

Plan Report for Leggett 1-5H - Plan C Rev 0 Proposed Permit Only

Measured Depth (usft)	Inclination (°)	Azimuth (°)	Vertical Depth (usft)	+N/-S (usft)	+E/-W (usft)	Vertical Section (usft)	Dogleg Rate (°/100usft)	Build Rate (°/100usft)	Turn Rate (°/100usft)	Toolface Azimuth (°)
5,900.0	0.00	0.00	5,900.0	0.0	0.0	0.0	0.00	0.00	0.00	0.00
5,918.0	0.00	0.00	5,918.0	0.0	0.0	0.0	0.00	0.00	0.00	0.00
KOP at 5918.0 ft										
5,925.0	0.91	98.86	5,925.0	0.0	0.1	0.1	13.00	13.00	0.00	98.86
5,950.0	4.16	98.86	5,950.0	-0.2	1.1	1.2	13.00	13.00	0.00	0.00
5,975.0	7.41	98.86	5,974.8	-0.6	3.6	3.7	13.00	13.00	0.00	0.00
6,000.0	10.66	98.86	5,999.5	-1.2	7.5	7.6	13.00	13.00	0.00	0.00
6,025.0	13.91	98.86	6,024.0	-2.0	12.8	12.9	13.00	13.00	0.00	0.00
6,050.0	17.16	98.86	6,048.0	-3.0	19.4	19.6	13.00	13.00	0.00	0.00
6,075.0	20.41	98.86	6,071.7	-4.3	27.3	27.7	13.00	13.00	0.00	0.00
6,100.0	23.66	98.86	6,094.9	-5.7	36.6	37.0	13.00	13.00	0.00	0.00
6,125.0	26.91	98.86	6,117.5	-7.4	47.2	47.7	13.00	13.00	0.00	0.00
6,150.0	30.16	98.86	6,139.4	-9.2	59.0	59.7	13.00	13.00	0.00	0.00
6,175.0	33.41	98.86	6,160.7	-11.2	72.0	72.8	13.00	13.00	0.00	0.00
6,200.0	36.66	98.86	6,181.1	-13.4	86.1	87.2	13.00	13.00	0.00	0.00
6,225.0	39.91	98.86	6,200.8	-15.8	101.4	102.6	13.00	13.00	0.00	0.00
6,250.0	43.16	98.86	6,219.5	-18.4	117.8	119.2	13.00	13.00	0.00	0.00
6,275.0	46.41	98.86	6,237.2	-21.1	135.2	136.8	13.00	13.00	0.00	0.00
6,300.0	49.66	98.86	6,253.9	-23.9	153.6	155.4	13.00	13.00	0.00	0.00
6,325.0	52.91	98.86	6,269.6	-26.9	172.9	174.9	13.00	13.00	0.00	0.00
6,350.0	56.16	98.86	6,284.1	-30.1	193.0	195.3	13.00	13.00	0.00	0.00
6,375.0	59.41	98.86	6,297.4	-33.3	213.9	216.4	13.00	13.00	0.00	0.00
6,400.0	62.66	98.86	6,309.5	-36.7	235.5	238.3	13.00	13.00	0.00	0.00
6,425.0	65.91	98.86	6,320.4	-40.2	257.7	260.8	13.00	13.00	0.00	0.00
6,450.0	69.16	98.86	6,329.9	-43.7	280.6	283.9	13.00	13.00	0.00	0.00
6,475.0	72.41	98.86	6,338.1	-47.4	303.9	307.5	13.00	13.00	0.00	0.00
6,500.0	75.66	98.86	6,345.0	-51.1	327.6	331.5	13.00	13.00	0.00	0.00
6,525.0	78.91	98.86	6,350.5	-54.8	351.7	355.9	13.00	13.00	0.00	0.00
6,550.0	82.16	98.86	6,354.6	-58.6	376.1	380.5	13.00	13.00	0.00	0.00
6,575.0	85.41	98.86	6,357.3	-62.4	400.6	405.4	13.00	13.00	0.00	0.00
6,600.0	88.66	98.86	6,358.6	-66.3	425.3	430.3	13.00	13.00	0.00	0.00
6,608.1	89.71	98.86	6,358.7	-67.5	433.3	438.4	13.00	13.00	0.00	0.00
End Build at 6608.1 ft										
6,669.5	89.71	98.86	6,359.0	-77.0	494.0	499.8	0.00	0.00	0.00	0.00
Casing Point at 6669.5 MD & 6359.0 TVD - 7"										
6,700.0	89.71	98.86	6,359.2	-81.7	524.1	530.3	0.00	0.00	0.00	0.00
6,800.0	89.71	98.86	6,359.7	-97.1	622.9	630.3	0.00	0.00	0.00	0.00
6,819.5	89.71	98.86	6,359.8	-100.1	642.2	649.8	0.00	0.00	0.00	0.00
6,886.2	89.71	100.19	6,360.1	-111.1	707.9	716.5	2.00	0.00	2.00	90.07
6,900.0	89.71	100.19	6,360.2	-113.6	721.5	730.3	0.00	0.00	0.00	0.00
7,000.0	89.71	100.19	6,360.7	-131.3	820.0	830.3	0.00	0.00	0.00	0.00
7,100.0	89.71	100.19	6,361.2	-149.0	918.4	930.3	0.00	0.00	0.00	0.00
7,200.0	89.71	100.19	6,361.7	-166.7	1,016.8	1,030.3	0.00	0.00	0.00	0.00
7,300.0	89.71	100.19	6,362.2	-184.4	1,115.2	1,130.3	0.00	0.00	0.00	0.00
7,400.0	89.71	100.19	6,362.8	-202.0	1,213.6	1,230.3	0.00	0.00	0.00	0.00
7,500.0	89.71	100.19	6,363.3	-219.7	1,312.1	1,330.3	0.00	0.00	0.00	0.00
7,600.0	89.71	100.19	6,363.8	-237.4	1,410.5	1,430.3	0.00	0.00	0.00	0.00
7,700.0	89.71	100.19	6,364.3	-255.1	1,508.9	1,530.3	0.00	0.00	0.00	0.00
7,800.0	89.71	100.19	6,364.8	-272.8	1,607.3	1,630.3	0.00	0.00	0.00	0.00
7,900.0	89.71	100.19	6,365.3	-290.5	1,705.7	1,730.3	0.00	0.00	0.00	0.00
8,000.0	89.71	100.19	6,365.8	-308.2	1,804.2	1,830.3	0.00	0.00	0.00	0.00
8,100.0	89.71	100.19	6,366.3	-325.9	1,902.6	1,930.3	0.00	0.00	0.00	0.00
8,200.0	89.71	100.19	6,366.8	-343.6	2,001.0	2,030.3	0.00	0.00	0.00	0.00
8,300.0	89.71	100.19	6,367.3	-361.3	2,099.4	2,130.3	0.00	0.00	0.00	0.00
8,400.0	89.71	100.19	6,367.8	-379.0	2,197.8	2,230.3	0.00	0.00	0.00	0.00
8,500.0	89.71	100.19	6,368.4	-396.7	2,296.3	2,330.3	0.00	0.00	0.00	0.00
8,600.0	89.71	100.19	6,368.9	-414.4	2,394.7	2,430.3	0.00	0.00	0.00	0.00
8,700.0	89.71	100.19	6,369.4	-432.1	2,493.1	2,530.3	0.00	0.00	0.00	0.00
8,800.0	89.71	100.19	6,369.9	-449.8	2,591.5	2,630.3	0.00	0.00	0.00	0.00

Plan Report for Leggett 1-5H - Plan C Rev 0 Proposed Permit Only

Measured Depth (usft)	Inclination (°)	Azimuth (°)	Vertical Depth (usft)	+N/-S (usft)	+E/-W (usft)	Vertical Section (usft)	Dogleg Rate (°/100usft)	Build Rate (°/100usft)	Turn Rate (°/100usft)	Toolface Azimuth (°)
8,900.0	89.71	100.19	6,370.4	-467.5	2,689.9	2,730.3	0.00	0.00	0.00	0.00
9,000.0	89.71	100.19	6,370.9	-485.2	2,788.4	2,830.3	0.00	0.00	0.00	0.00
9,100.0	89.71	100.19	6,371.4	-502.8	2,886.8	2,930.3	0.00	0.00	0.00	0.00
9,200.0	89.71	100.19	6,371.9	-520.5	2,985.2	3,030.3	0.00	0.00	0.00	0.00
9,300.0	89.71	100.19	6,372.4	-538.2	3,083.6	3,130.2	0.00	0.00	0.00	0.00
9,400.0	89.71	100.19	6,372.9	-555.9	3,182.1	3,230.2	0.00	0.00	0.00	0.00
9,500.0	89.71	100.19	6,373.4	-573.6	3,280.5	3,330.2	0.00	0.00	0.00	0.00
9,600.0	89.71	100.19	6,373.9	-591.3	3,378.9	3,430.2	0.00	0.00	0.00	0.00
9,700.0	89.71	100.19	6,374.5	-609.0	3,477.3	3,530.2	0.00	0.00	0.00	0.00
9,800.0	89.71	100.19	6,375.0	-626.7	3,575.7	3,630.2	0.00	0.00	0.00	0.00
9,900.0	89.71	100.19	6,375.5	-644.4	3,674.2	3,730.2	0.00	0.00	0.00	0.00
10,000.0	89.71	100.19	6,376.0	-662.1	3,772.6	3,830.2	0.00	0.00	0.00	0.00
10,100.0	89.71	100.19	6,376.5	-679.8	3,871.0	3,930.2	0.00	0.00	0.00	0.00
10,200.0	89.71	100.19	6,377.0	-697.5	3,969.4	4,030.2	0.00	0.00	0.00	0.00
10,300.0	89.71	100.19	6,377.5	-715.2	4,067.8	4,130.2	0.00	0.00	0.00	0.00
10,400.0	89.71	100.19	6,378.0	-732.9	4,166.3	4,230.2	0.00	0.00	0.00	0.00
10,500.0	89.71	100.19	6,378.5	-750.6	4,264.7	4,330.2	0.00	0.00	0.00	0.00
10,590.2	89.71	100.19	6,379.0	-766.5	4,353.4	4,420.4	0.00	0.00	0.00	0.00

TD at 10590.2 MD & 6379.0 TVD

Plan Annotations

Measured Depth (usft)	Vertical Depth (usft)	Local Coordinates +N/-S (usft)	+E/-W (usft)	Comment
5,918.0	5,918.0	0.0	0.0	KOP at 5918.0 ft
6,608.1	6,358.7	-67.5	433.3	End Build at 6608.1 ft
6,669.5	6,359.0	-77.0	494.0	Casing Point at 6669.5 MD & 6359.0 TVD
10,590.2	6,379.0	-100.1	642.2	TD at 10590.2 MD & 6379.0 TVD

Vertical Section Information

Angle Type	Target	Azimuth (°)	Origin Type	Origin +N/_S (usft)	+E/-W (usft)	Start TVD (usft)
TD	No Target (Freehand)	99.99	Slot	0.0	0.0	0.0

Survey tool program

From (usft)	To (usft)	Survey/Plan	Survey Tool
0.0	10,590.2	Plan C Rev 0 Proposed Permit Only	MWD

Casing Details

Measured Depth (usft)	Vertical Depth (usft)	Name	Casing Diameter (")	Hole Diameter (")
6,669.5	6,359.0	7"	7	7-1/2

Plan Report for Leggett 1-5H - Plan C Rev 0 Proposed Permit Only

Targets associated with this wellbore

Target Name	TVD (usft)	+N/-S (usft)	+E/-W (usft)	Shape
Leggett 1-5H BHL_Tgt	6,379.0	-766.5	4,353.4	Point
Leggett 1-5H SL_Tgt	0.0	0.0	0.0	Point
Leggett 1-5H CP_Tgt	6,359.0	-77.0	494.0	Point
Sec 5 Setback Lines	0.0	0.0	0.0	Polygon
Section 5 Lines	0.0	0.0	0.0	Polygon

North Reference Sheet for Sec. 5-T7N-R60W - Leggett 1-5H - Plan C Rev 0

All data is in US Feet unless otherwise stated. Directions and Coordinates are relative to True North Reference.

Vertical Depths are relative to WELL @ 4937.0usft (Original Well Elev). Northing and Easting are relative to Sec. 5-T7N-R60W

Coordinate System is US State Plane 1983, Colorado Northern Zone using datum North American Datum 1983, ellipsoid GRS 1980

Projection method is Lambert Conformal Conic (2 parallel)

Central Meridian is -105.50°, Longitude Origin:0.000000°, Latitude Origin:40.783333°

False Easting: 3,000,000.00usft, False Northing: 1,000,000.00usft, Scale Reduction: 0.99997564

Grid Coordinates of Well: 1,465,240.35 usft N, 3,381,677.81 usft E

Geographical Coordinates of Well: 40° 36' 08.50" N, 104° 07' 31.50" W

Grid Convergence at Surface is: 0.89°

Based upon Minimum Curvature type calculations, at a Measured Depth of 10,590.16usft
the Bottom Hole Displacement is 4,420.38usft in the Direction of 99.99° (True).

Magnetic Convergence at surface is: -7.44° (13 December 2012, , IGRF2010)

