

The Road to Excellence Starts with Safety

Sold To #: 300721	Ship To #: 2940651	Quote #:	Sales Order #: 9683405
Customer: WPX ENERGY ROCKY MOUNTAIN LLC-EBUS	Customer Rep: Oaks, Rick		
Well Name: RWF	Well #: 323-35	API/UWI #: 05-045-20454	
Field: RULISON	City (SAP): RIFLE	County/Parish: Garfield	State: Colorado
Lat: N 39.483 deg. OR N 39 deg. 29 min. 0.017 secs.	Long: W 107.863 deg. OR W -108 deg. 8 min. 13.571 secs.		
Contractor: NABORS 576	Rig/Platform Name/Num: NABORS 576		
Job Purpose: Cement Surface Casing			
Well Type: Development Well	Job Type: Cement Surface Casing		
Sales Person: MAYO, MARK	Srv Supervisor: DEUSSEN, EDWARD	MBU ID Emp #: 485182	

Job Personnel

HES Emp Name	Exp Hrs	Emp #	HES Emp Name	Exp Hrs	Emp #	HES Emp Name	Exp Hrs	Emp #
DEUSSEN, EDWARD Eric	9.5	485182	HAMMOND, DENNIS C	9.5	287025	LAULAINEN, ROGER Edward	9.5	524413
WALPOLE, DARREN Livingston	9.5	485294	WEAVER, CARLTON Russell	9.5	457698			

Equipment

HES Unit #	Distance-1 way	HES Unit #	Distance-1 way	HES Unit #	Distance-1 way	HES Unit #	Distance-1 way
10744549	60 mile	10871245	60 mile	10995027	60 mile	11164590	60 mile
11583932	60 mile	11808831	60 mile				

Job Hours

Date	On Location Hours	Operating Hours	Date	On Location Hours	Operating Hours	Date	On Location Hours	Operating Hours
8/5/2012	6.25	0.5	8/6/2012	3.25	1.5			

TOTAL Total is the sum of each column separately

Job

Job Times

Formation Name	Top	Bottom	Called Out	Date	Time	Time Zone
Formation Depth (MD)			On Location	05 - Aug - 2012	13:30	MST
Form Type	BHST		Job Started	05 - Aug - 2012	17:45	MST
Job depth MD	1154. ft	Job Depth TVD	Job Completed	06 - Aug - 2012	00:53	MST
Water Depth		Wk Ht Above Floor	Departed Loc	06 - Aug - 2012	01:49	MST
Perforation Depth (MD)	From	To		06 - Aug - 2012	03:15	MST

Well Data

Description	New / Used	Max pressure psig	Size in	ID in	Weight lbm/ft	Thread	Grade	Top MD ft	Bottom MD ft	Top TVD ft	Bottom TVD ft
OPEN HOLE				13.5				.	1175.		
SURFACE CASING	Unknown		9.625	9.001	32.3		H-40	.	1153.3		

Sales/Rental/3rd Party (HES)

Description	Qty	Qty uom	Depth	Supplier
PLUG,CMTG,TOP,9 5/8,HWE,8.16 MIN/9.06 MA	1	EA		
R/A DENSOMETER W/CHART RECORDER,/JOB,ZI	1	JOB		
PORT. DATA ACQUIS. W/OPTICEM RT W/HES	1	EA		
ADC (AUTO DENSITY CTRL) SYS, /JOB,ZI	1	JOB		

Tools and Accessories

Type	Size	Qty	Make	Depth	Type	Size	Qty	Make	Depth	Type	Size	Qty	Make
Guide Shoe					Packer					Top Plug	9 5/8	1	HES
Float Shoe					Bridge Plug					Bottom Plug			
Float Collar					Retainer					SSR plug set			
Insert Float										Plug Container	9 5/8	1	HES
Stage Tool										Centralizers			

Miscellaneous Materials

Gelling Agt	Conc	Surfactant	Conc	Acid Type	Qty	Conc	%
Treatment Fld	Conc	Inhibitor	Conc	Sand Type	Size	Qty	

Fluid Data									
Stage/Plug #: 1									
Fluid #	Stage Type	Fluid Name	Qty	Qty uom	Mixing Density lbm/gal	Yield ft ³ /sk	Mix Fluid Gal/sk	Rate bbl/min	Total Mix Fluid Gal/sk
1	Fresh Water		20.00	bbl	8.33	.0	.0	6.0	
2	Lead Cement	VERSACEM (TM) SYSTEM (452010)	170.0	sacks	12.3	2.38	13.75	8.0	13.75
3	Tail Cement	VERSACEM (TM) SYSTEM (452010)	160.0	sacks	12.8	2.11	11.75	8.0	11.75
4	Displacement Fluid		87.00	bbl	8.34	.0	.0	10.0	
Calculated Values		Pressures		Volumes					
Displacement	87.8	Shut In: Instant		Lost Returns	0	Cement Slurry	132.1	Pad	
Top Of Cement	SURFACE	5 Min		Cement Returns	12	Actual Displacement	87.8	Treatment	
Frac Gradient		15 Min		Spacers	20	Load and Breakdown		Total Job	239.9
Rates									
Circulating		Mixing	8	Displacement	10	Avg. Job			9
Cement Left In Pipe	Amount	37.50 ft	Reason	Shoe Joint					
Frac Ring # 1 @	ID	Frac ring # 2 @	ID	Frac Ring # 3 @	ID	Frac Ring # 4 @	ID		
The Information Stated Herein Is Correct				Customer Representative Signature					

The Road to Excellence Starts with Safety

Sold To #: 300721	Ship To #: 2940651	Quote #:	Sales Order #: 9683405
Customer: WPX ENERGY ROCKY MOUNTAIN LLC-EBUS	Customer Rep: Oaks, Rick		
Well Name: RWF	Well #: 323-35	API/UWI #: 05-045-20454	
Field: RULISON	City (SAP): RIFLE	County/Parish: Garfield	State: Colorado
Legal Description:			
Lat: N 39.483 deg. OR N 39 deg. 29 min. 0.017 secs.		Long: W 107.863 deg. OR W -108 deg. 8 min. 13.571 secs.	
Contractor: NABORS 576	Rig/Platform Name/Num: NABORS 576		
Job Purpose: Cement Surface Casing	Ticket Amount:		
Well Type: Development Well	Job Type: Cement Surface Casing		
Sales Person: MAYO, MARK	Srv Supervisor: DEUSSEN, EDWARD	MBU ID Emp #: 485182	

Activity Description	Date/Time	Cht #	Rate bbl/ min	Volume bbl		Pressure psig		Comments
				Stage	Total	Tubing	Casing	
Call Out	08/05/2012 13:30							
Pre-Convoy Safety Meeting	08/05/2012 15:45							
Crew Leave Yard	08/05/2012 16:00							1 ELITE, 1 660, 1 PICKUP
Arrive At Loc	08/05/2012 17:45							RIG STILL PULLING DRILL PIPE
Assessment Of Location Safety Meeting	08/05/2012 18:30							
Pre-Rig Up Safety Meeting	08/05/2012 23:15							
Rig-Up Equipment	08/05/2012 23:30							1 HARD LINE TO FLOOR, 2 WATER LINES TO UPRIGHT AND DAY TANK, 1 BULK HOSE
Pre-Job Safety Meeting	08/06/2012 00:30							
Start Job	08/06/2012 00:53							TD 1175, TP 1153.27, SJ 37.5, MW 9.4, OH 13 1/2, CSG 9 5/8", 32.3#
Pump Water	08/06/2012 00:53		2	2			55.0	FILL LINES
Pressure Test	08/06/2012 00:56							PRESSURED UP TO 3311 PSI - PRESSURE HELD WELL
Pump Spacer 1	08/06/2012 00:59		6	20			205.0	FRESH WATER SPACER
Pump Lead Cement	08/06/2012 01:06		8	72			441.0	170 SKS, 12.3 PPG, 2.38 YIELD, 13.75 GAL/SK
Pump Tail Cement	08/06/2012 01:16		8	60.1			352.0	160 SKS, 12.8 PPG, 2.11 YIELD, 11.75 GAL/SK

Sold To # : 300721

Ship To # :2940651

Quote # :

Sales Order # :

9683405

SUMMIT Version: 7.3.0039

Thursday, August 09, 2012 01:27:00

Cementing Job Log

Activity Description	Date/Time	Cht #	Rate bbl/ min	Volume bbl		Pressure psig		Comments
				Stage	Total	Tubing	Casing	
Shutdown	08/06/2012 01:27							
Drop Top Plug	08/06/2012 01:29							
Pump Displacement	08/06/2012 01:31		10	87.8			611.0	FRESH WATER
Slow Rate	08/06/2012 01:43		2	10			240.0	
Bump Plug	08/06/2012 01:47						264.0	PRESSURED UP TO 870 PSI
Check Floats	08/06/2012 01:48							FLOATS HELD - GOT 1/2 BBL BACK
End Job	08/06/2012 01:49							GOT 12 BBLS CEMENT TO SURFACE / USED 40 LBS SUGAR
Post-Job Safety Meeting (Pre Rig-Down)	08/06/2012 02:00							
Rig-Down Equipment	08/06/2012 02:15							
Pre-Convoy Safety Meeting	08/06/2012 03:00							
Crew Leave Location	08/06/2012 03:15							
Other	08/06/2012 03:16							THANK YOU FOR USING HALLIBURTON AND ED DEUSSEN AND CREW

Sold To # : 300721

Ship To # :2940651

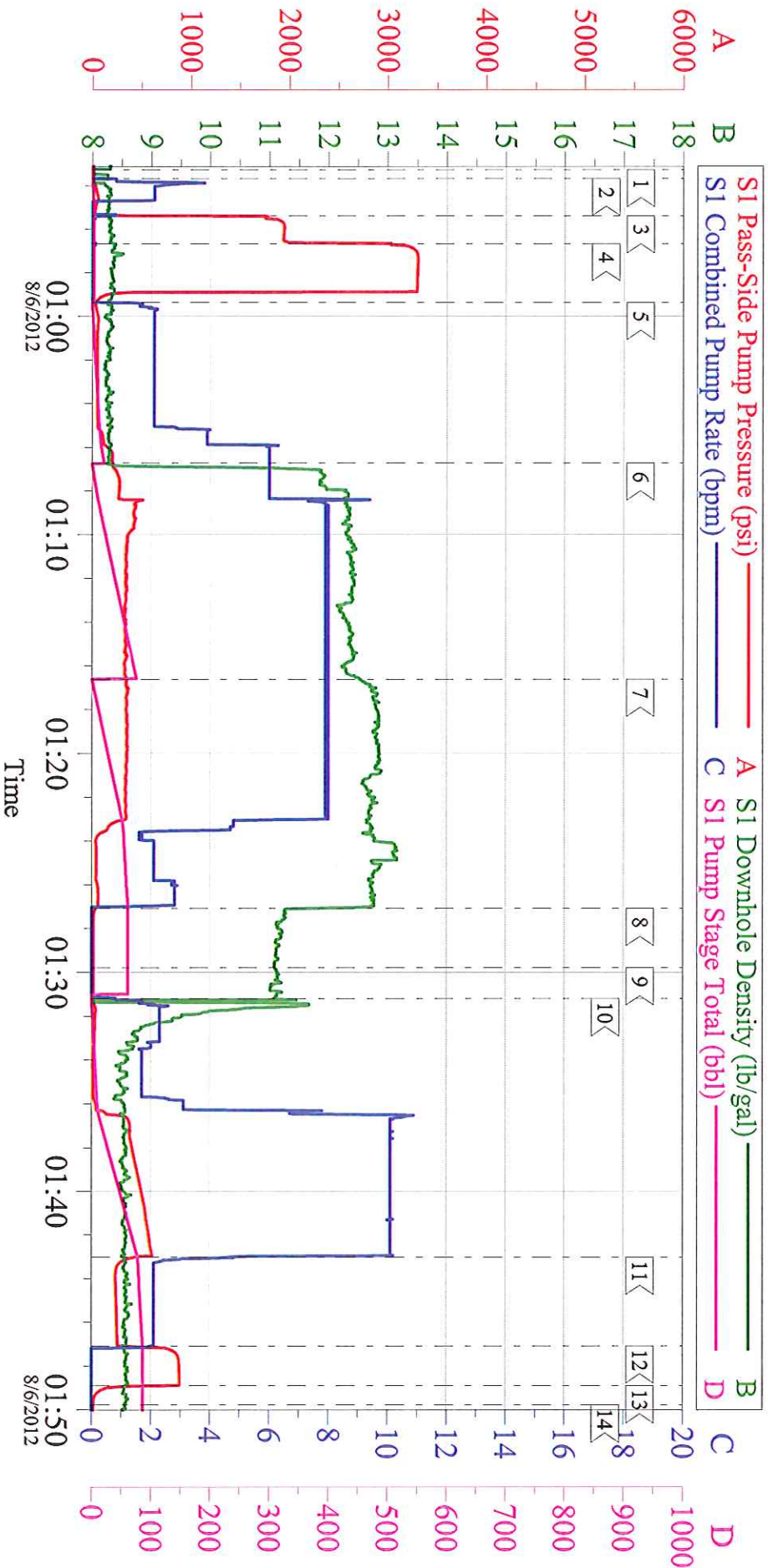
Quote # :

Sales Order # : 9683405

SUMMIT Version: 7.3.0039

Thursday, August 09, 2012 01:27:00

WPX - RWF 323-35 9 5/8 SURFACE

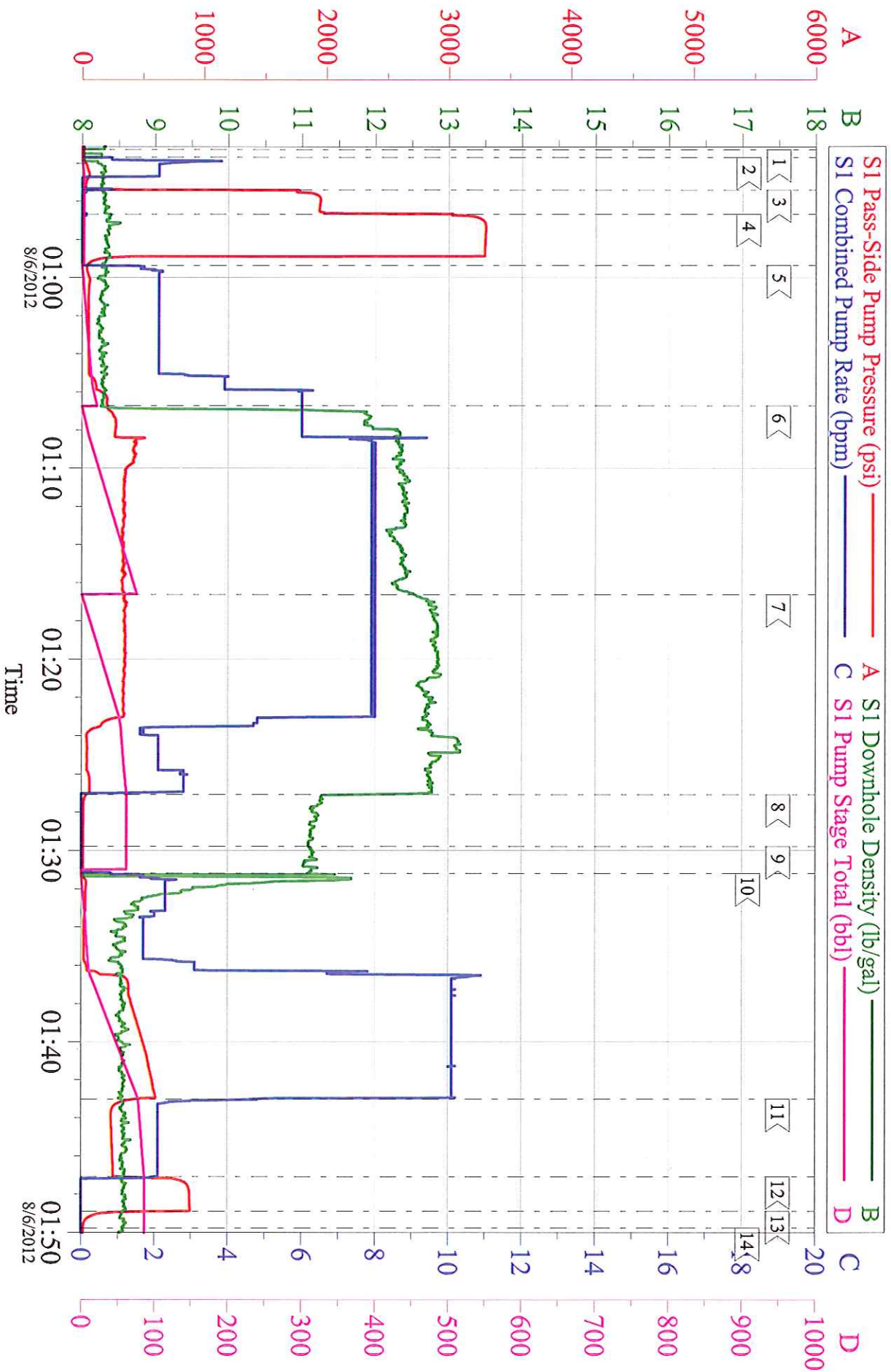


Customer: WPX
Well Description: RWF 323-35
Company Rep: RICK OAKS

Job Date: 05-Aug-2012
Job Type: SURFACE
Cement Supervisor: ED DEUSSEN

Sales Order #: 9683405
ADC Used: YES
Elite #: RUSTY WEAVER

WPX - RWF 323-35 9 5/8 SURFACE



Customer: WPX
Well Description: RWF 323-35
Company Rep: RICK OAKS

Job Date: 05-Aug-2012
Job Type: SURFACE
Cement Supervisor: ED DEUSSEN

Sales Order #: 9683405
ADC Used: YES
Elite #8: RUSTY WEAVER