



# NABORS

**COMPLETION  
& PRODUCTION  
SERVICES CO.**

**MICRO  
LOG**

Company MULL DRILLING COMPANY, INC.

Well APC - DOUG #1-25

Field LOMA

County CHEYENNE

State COLORADO

Company MULL DRILLING COMPANY, INC.

Well APC - DOUG #1-25

Field LOMA

County CHEYENNE State COLORADO

Location: API # : 05-017-07732-0000

825' FSL & 1620' FEL  
SW/4 - SE/4

SEC 25 TWP 16S RGE 45W

Permanent Datum GROUND LEVEL Elevation 4295  
Log Measured From KELLY BUSHING 11' A.G.L.  
Drilling Measured From KELLY BUSHING

Other Services  
CDL/CNL/PE  
DIL/SONIC  
Elevation  
K.B. 4306  
D.F. 4304  
G.L. 4295

Date 12/10/12

Run Number TWO

Depth Driller 5560

Depth Logger 5565

Bottom Logged Interval 5543

Top Log Interval 3900

Casing Driller 8 5/8" @ 323'

Casing Logger 326

Bit Size 7 7/8"

Type Fluid in Hole CHEMICAL MUD

Density / Viscosity 9.2/57

pH / Fluid Loss 9.5/8.8

Source of Sample FLOWLINE

Rim @ Meas. Temp .950 @ 84F

Rmf @ Meas. Temp .713 @ 84F

Rmc @ Meas. Temp 1.14 @ 84F

Source of Rmf / Rmc MEASUREMENT

Rim @ BHT .614 @ 130F

Time Circulation Stopped 5.5 HOURS

Time Logger on Bottom 12:30 P.M.

Maximum Recorded Temperature 130F

Equipment Number 4854

Location HAYS, KANSAS

Recorded By JEFF LUEBBERS

Witnessed By PHIL ASKEY

<<< Fold Here >>>

All interpretations are opinions based on inferences from electrical or other measurements and we cannot and do not guarantee the accuracy or correctness of any interpretation, and we shall not, except in the case of gross or willful negligence on our part, be liable or responsible for any loss, costs, damages, or expenses incurred or sustained by anyone resulting from any interpretation made by any of our officers, agents or employees. These interpretations are also subject to our general terms and conditions set out in our current Price Schedule.

Comments

THANK YOU FOR USING "NABORS" HAYS, KANSAS (785) 628-6395  
DIRECTIONS

CHEYENNE WELLS, CO., 12 1/2S. ON HWY 385 TO "RD. C", 5 1/2W. TO RADIO TOWER, 1S., 1E. INTO



# NABORS

**COMPLETION  
& PRODUCTION**

# MAIN SECTION

Database File:

010031pe.db

Dataset Pathname:

pass7.3

Presentation Format:

micro

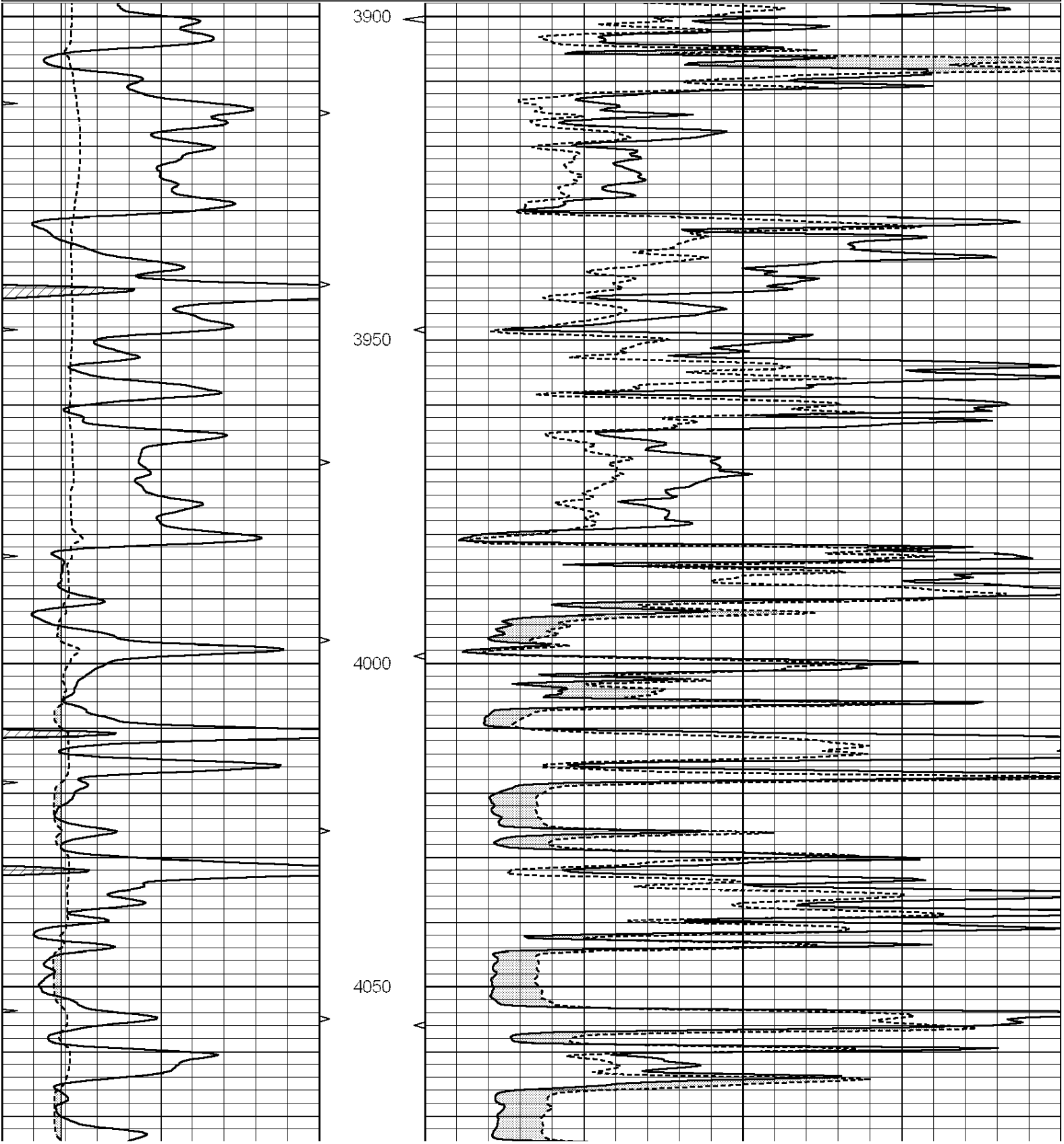
Dataset Creation:

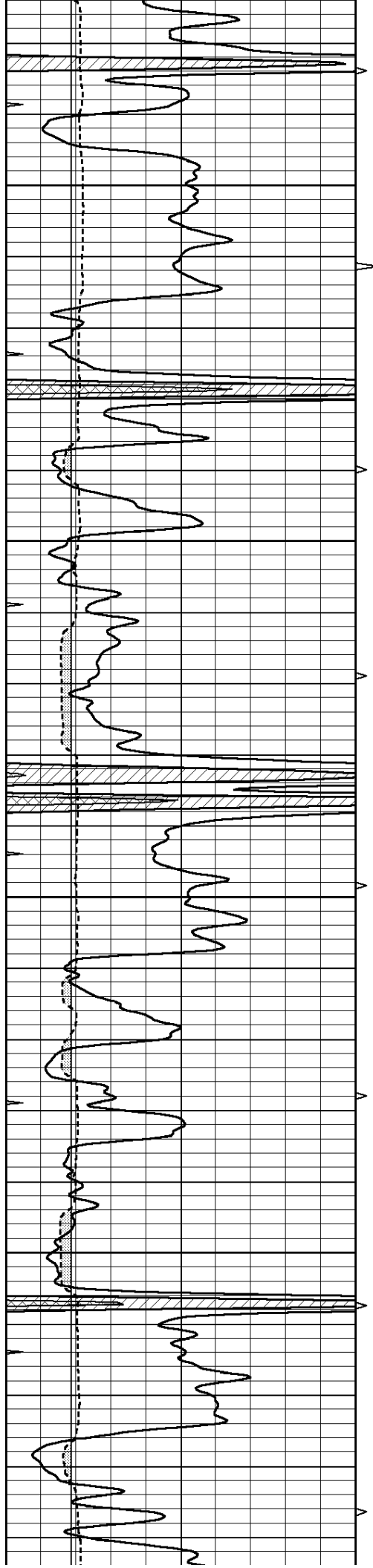
Mon Dec 10 18:39:54 2012

Charted by:

Depth in Feet scaled 1:240

0	GAMMA RAY (GAPI)	150	ABHV	0	MEL1.5 (Ohm-m)	40
6	CALIPER (in)	16	10 (ft3)	0 0	MEL2.0 (Ohm-m)	40
0	MINMK	20	TBHV			
			0 (ft3)	10		



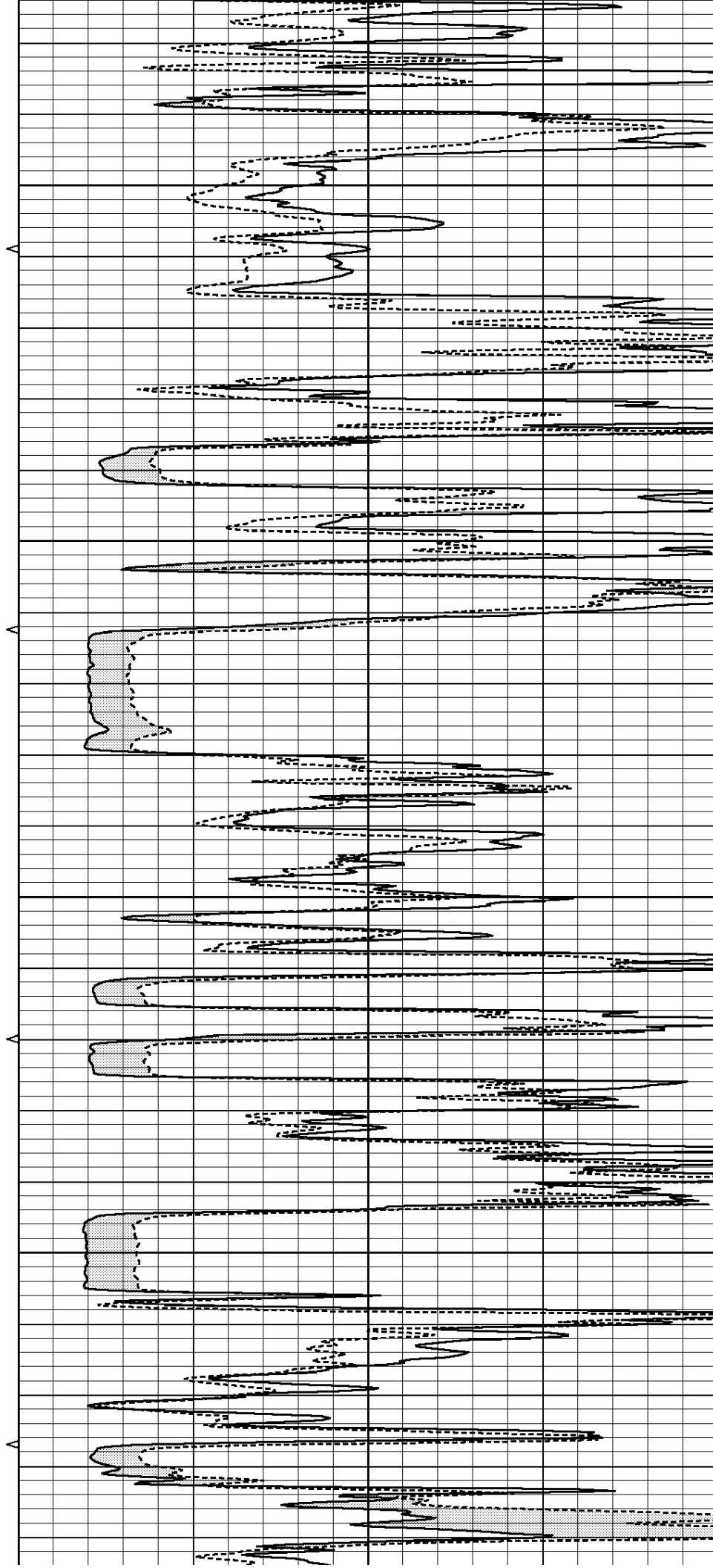


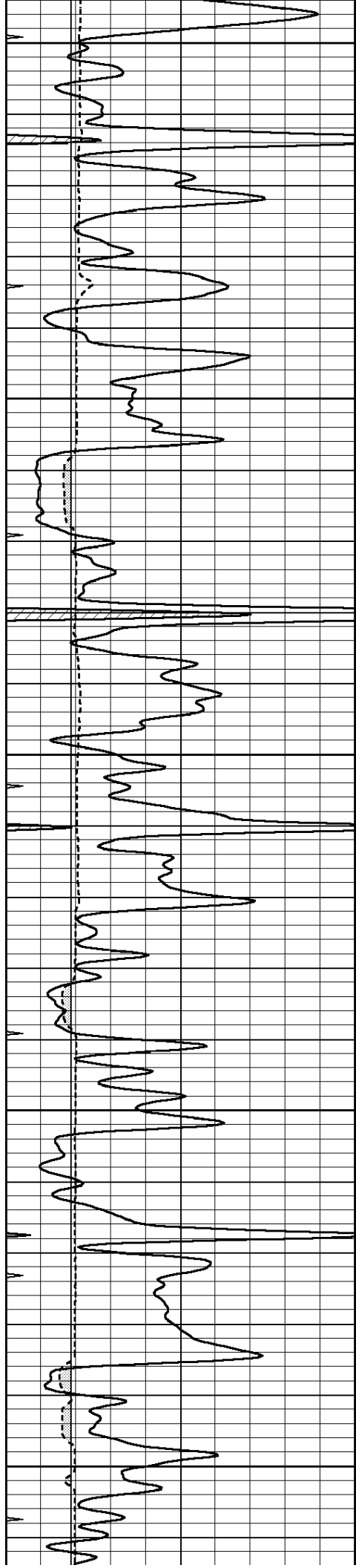
4100

4150

4200

4250





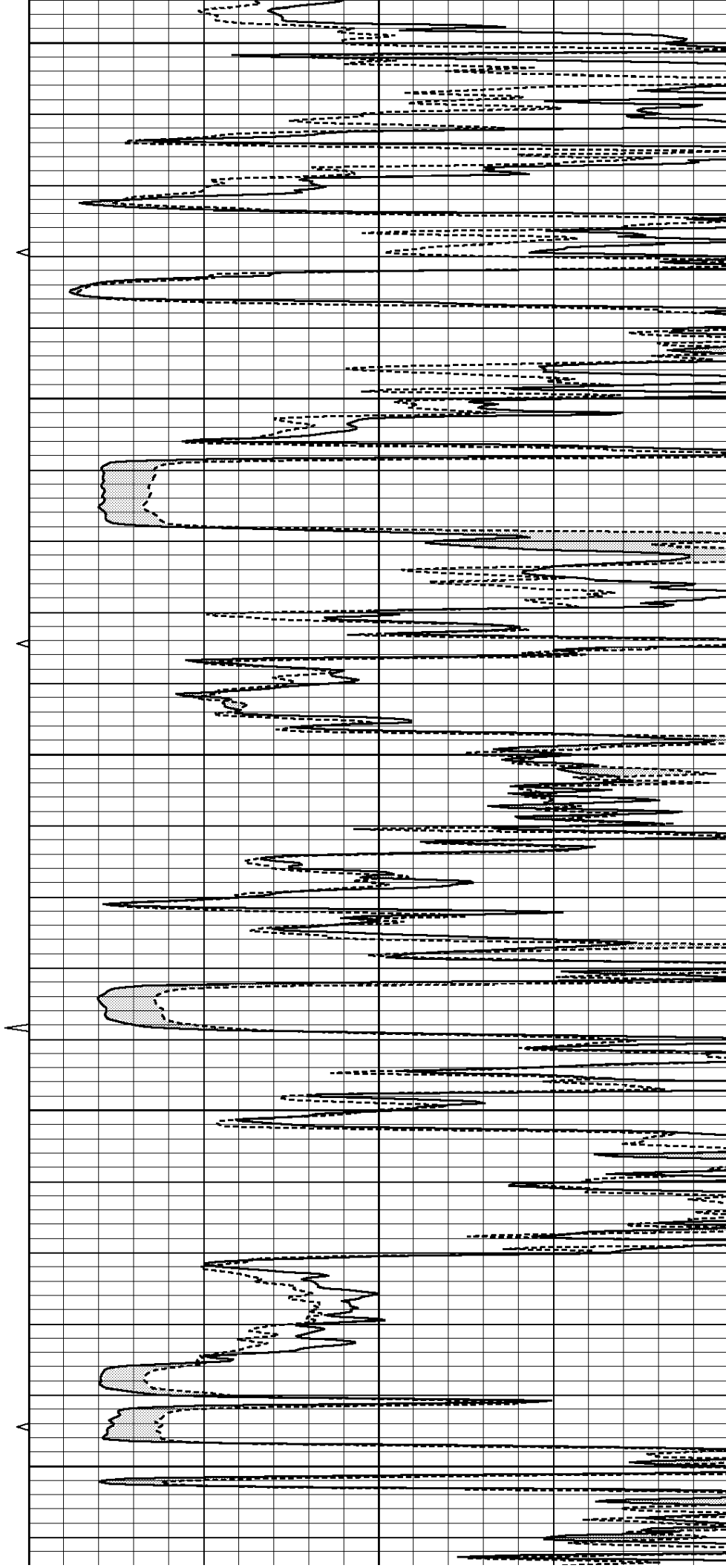
4300

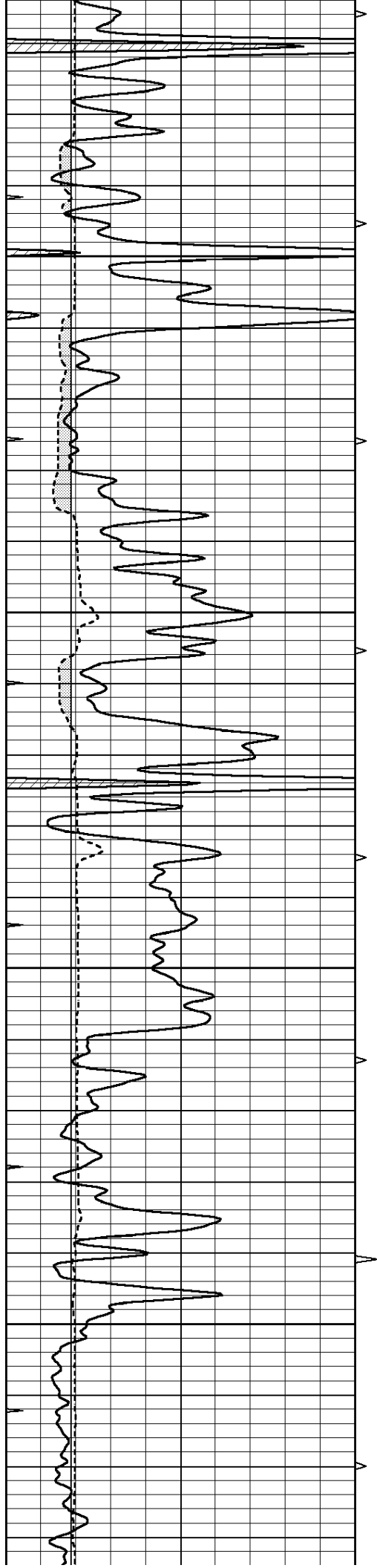
4350

4400

4450

4500



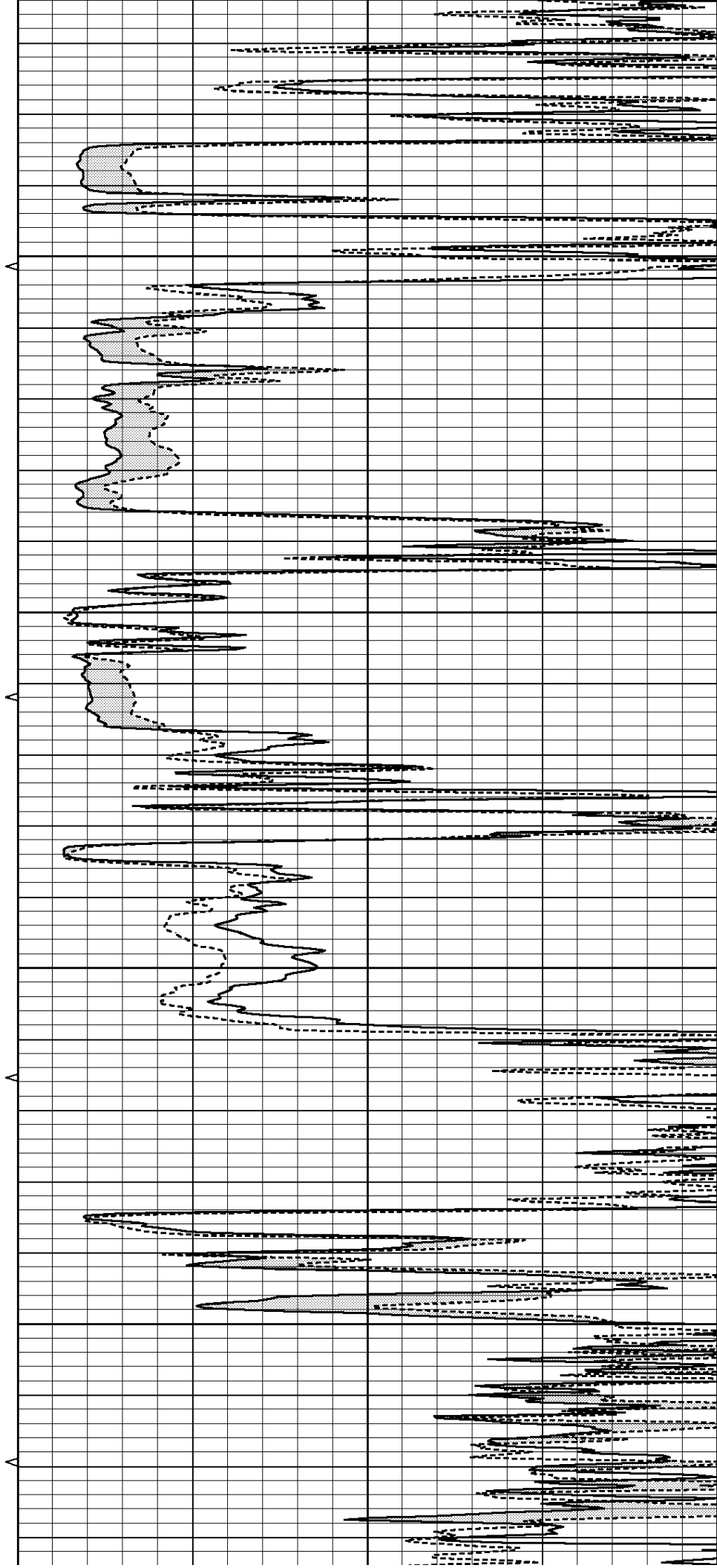


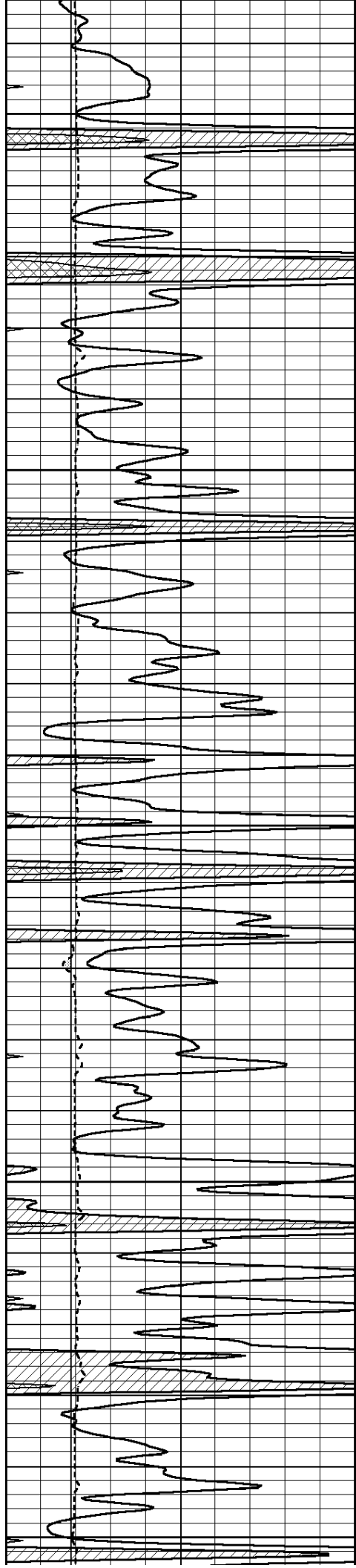
4550

4600

4650

4700





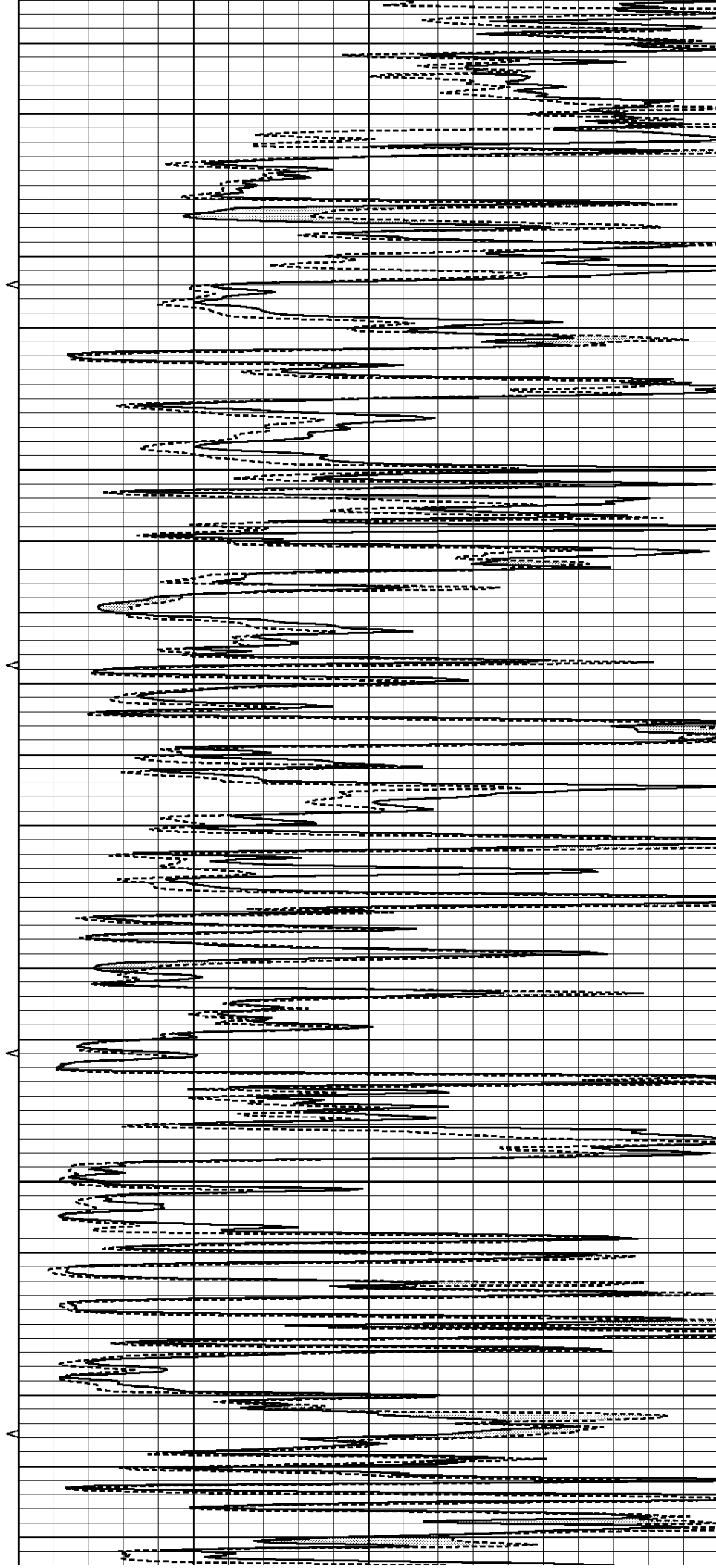
4750

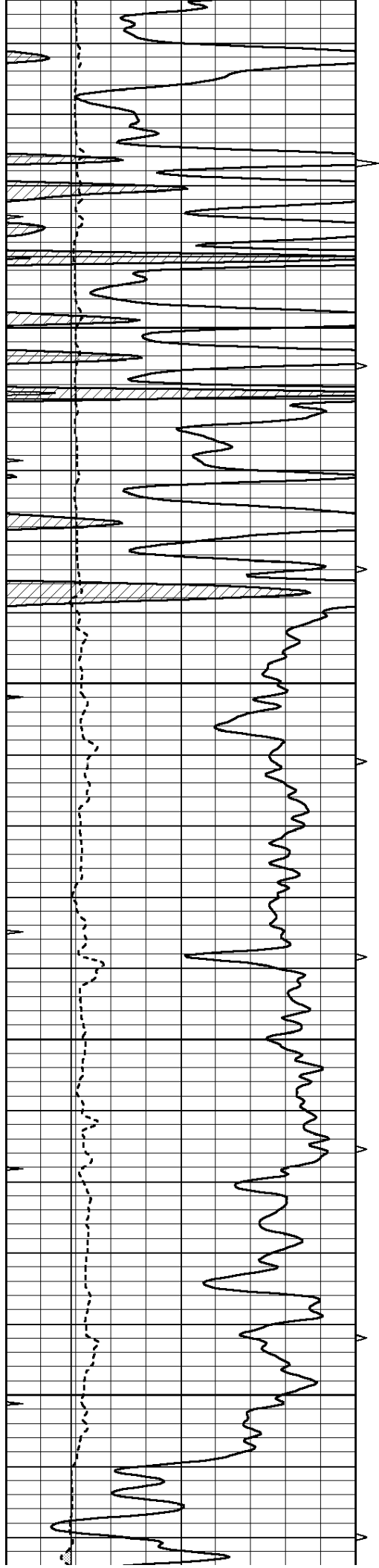
4800

4850

4900

4950



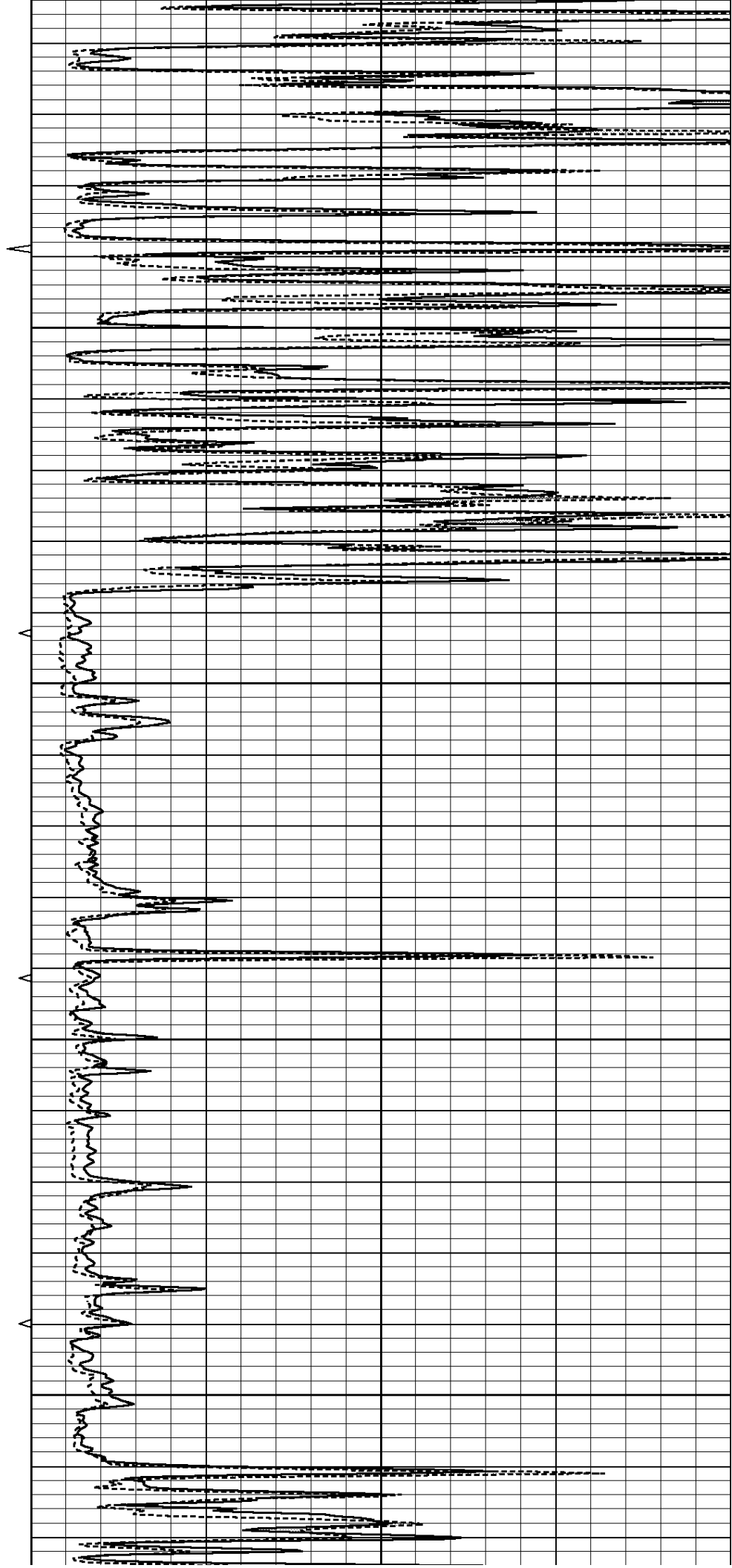


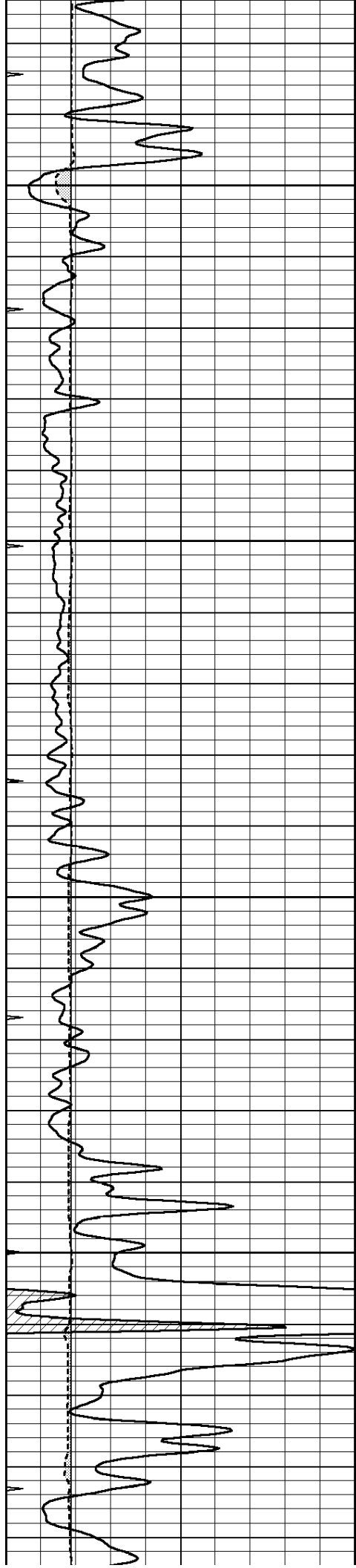
5000

5050

5100

5150



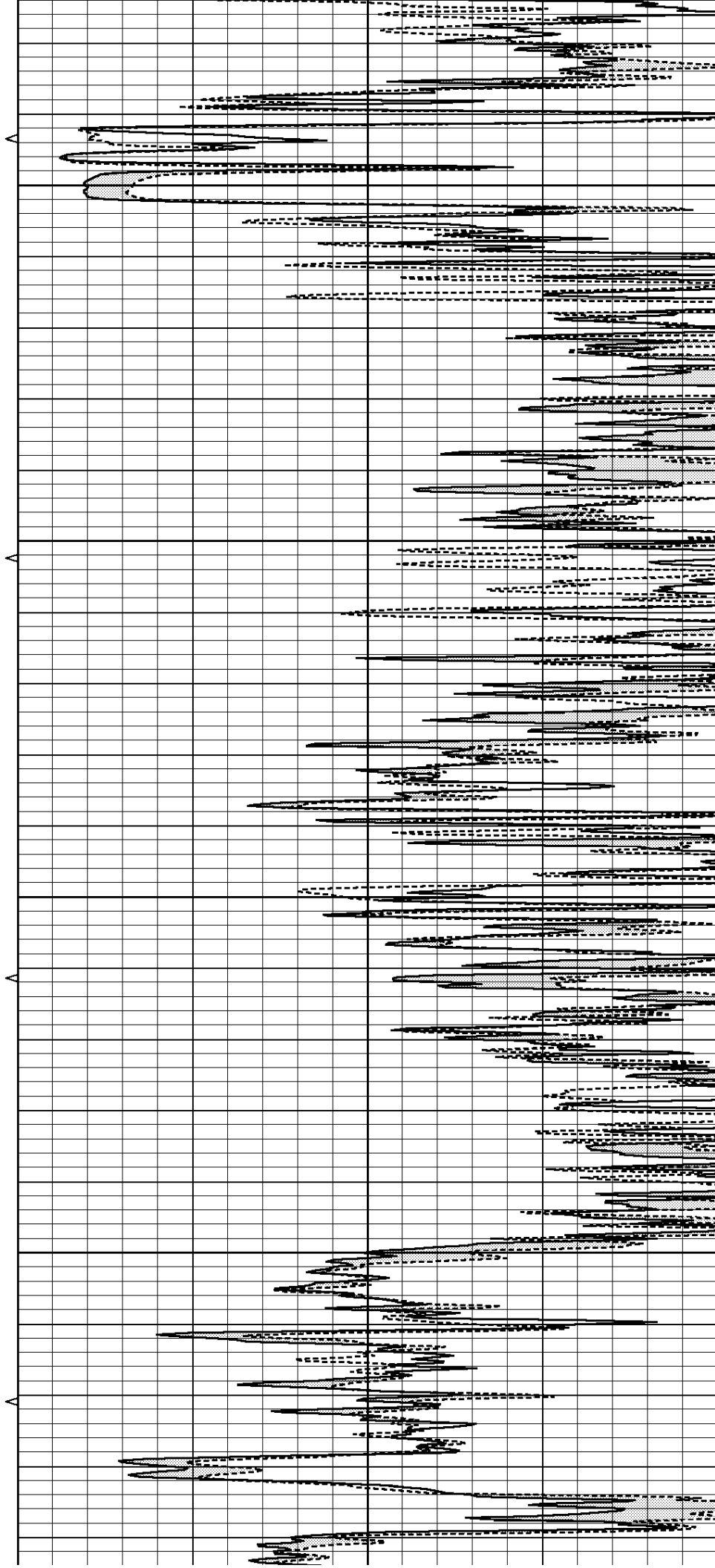


5200

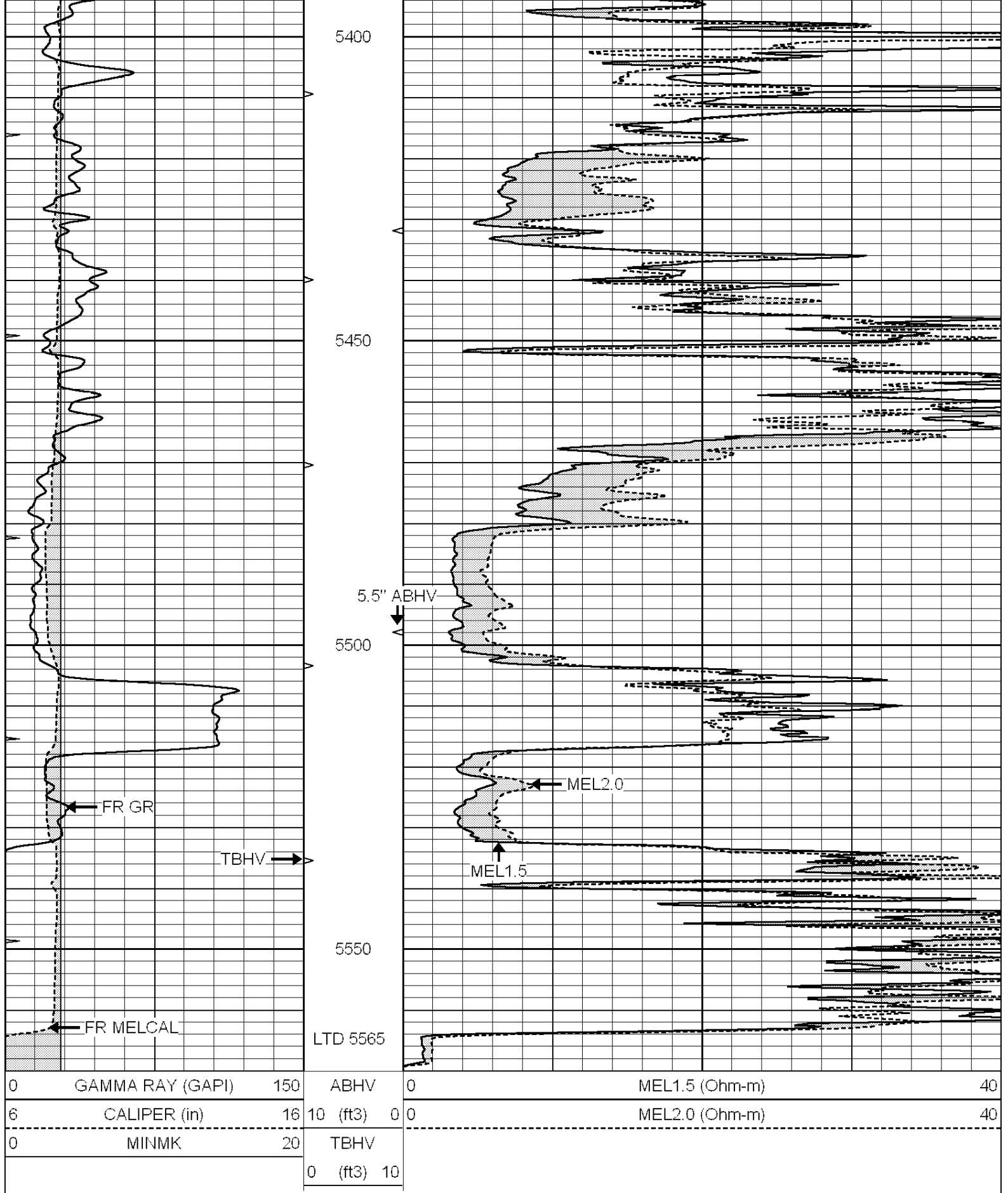
5250

5300

5350







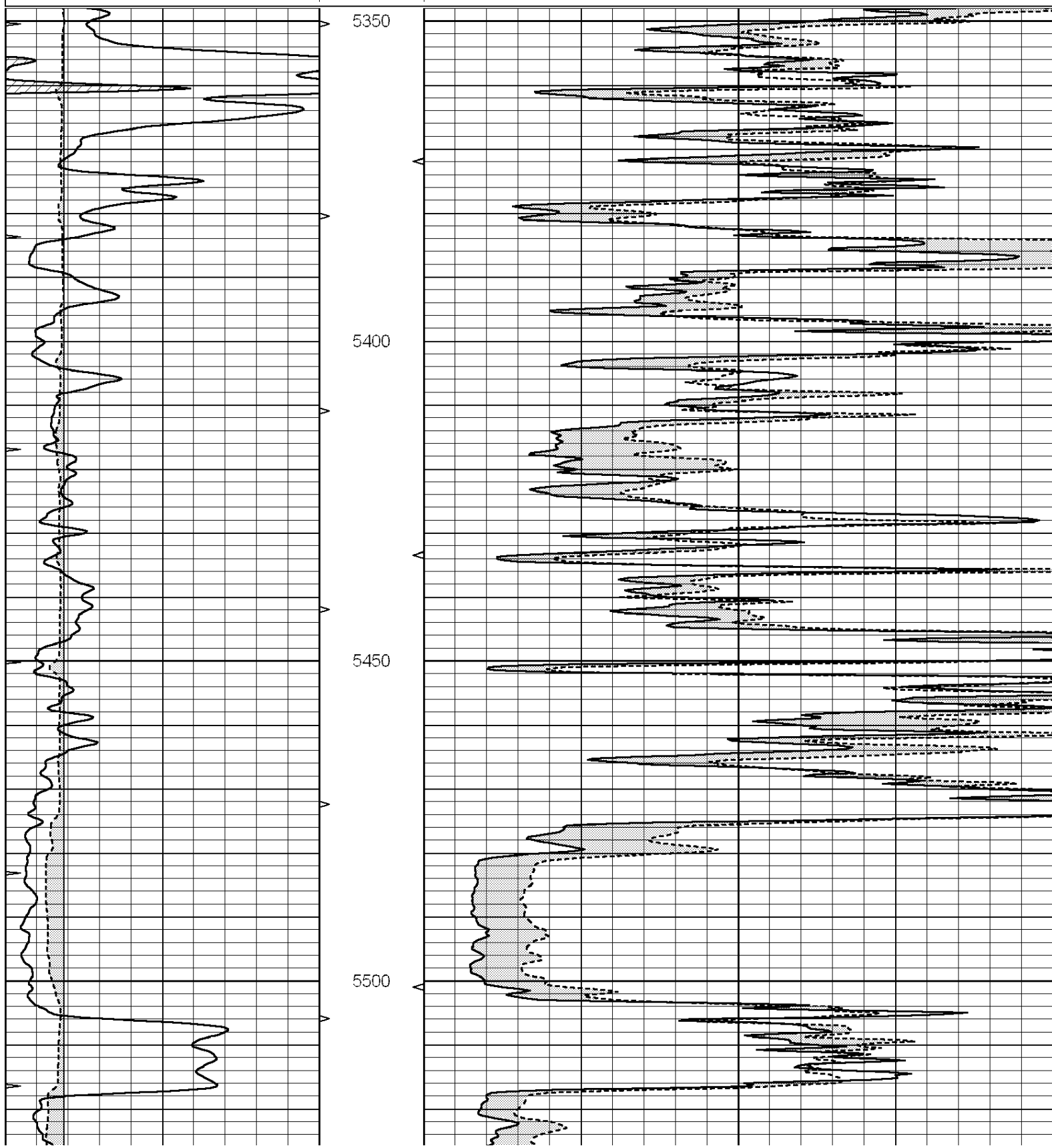
**NABORS**

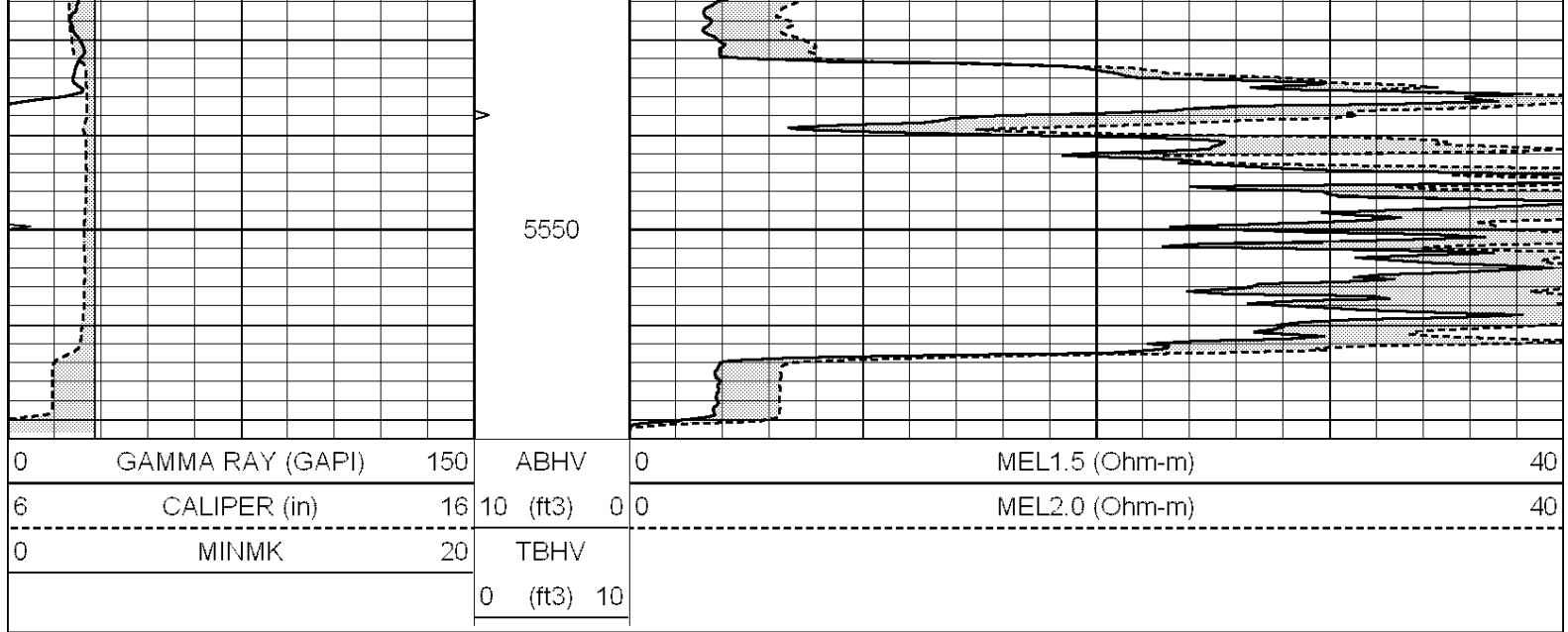
COMPLETION  
& PRODUCTION  
SERVICES CO.

REPEAT SECTION

Database File: 010031pe.db  
 Dataset Pathname: pass9.3  
 Presentation Format: micro  
 Dataset Creation: Mon Dec 10 18:51:07 2012  
 Charted by: Depth in Feet scaled 1:240

0	GAMMA RAY (GAPI)	150	ABHV	0	MEL1.5 (Ohm-m)	40
6	CALIPER (in)	16	10 (ft3)	0 0	MEL2.0 (Ohm-m)	40
0	MINMK	20	TBHV			
			0 (ft3)	10		





Calibration Report			
Database File:	010031pe.db		
Dataset Pathname:	pass7.3		
Dataset Creation:	Mon Dec 10 18:39:54 2012		
MICRO Calibration Report			
Serial Number:	2		
Tool Model:	PROBE		
Performed:	Mon Dec 10 17:17:14 2012		
Caliper Calibration:	Gain=3.929	Offset=3.858	
	Low Cal	High Cal	
References	8.300	15.000	
Readings	1.130	2.835	
1.5" Calibration:	Gain=25.000	Offset=0.000	
	Low Cal	High Cal	
References	0.000	20.000	
Readings	0.065	1.210	
2" Calibration:	Gain=40.000	Offset=-0.400	
	Low Cal	High Cal	
References	0.000	20.000	
Readings	0.012	1.043	
Gamma Ray Calibration Report			
Serial Number:	GR4		
Tool Model:	OPEN		
Performed:	Mon Dec 10 17:27:49 2012		
Calibrator Value:	200.0	GAPI	
Background Reading:	0.0	cps	
Calibrator Reading:	189.0	cps	
Sensitivity:	2.0000	GAPI/cps	