

The Road to Excellence Starts with Safety

Sold To #: 300721	Ship To #: 2949275	Quote #:	Sales Order #: 9788247
Customer: WPX ENERGY ROCKY MOUNTAIN LLC-EBUS	Customer Rep: Moore, Frank		
Well Name: RWF	Well #: 413-35	API/UWI #: 05-045-20520	
Field: RULISON	City (SAP): RIFLE	County/Parish: Garfield	State: Colorado
Lat: N 39.483 deg. OR N 39 deg. 28 min. 59.887 secs.	Long: W 107.863 deg. OR W -108 deg. 8 min. 13.412 secs.		
Contractor:	Rig/Platform Name/Num: NABORS 576		
Job Purpose: Cement Surface Casing			
Well Type: Development Well	Job Type: Cement Surface Casing		
Sales Person: MAYO, MARK	Srv Supervisor: ANGLESTEIN, TROY	MBU ID Emp #: 436099	

Job Personnel

HES Emp Name	Exp Hrs	Emp #	HES Emp Name	Exp Hrs	Emp #	HES Emp Name	Exp Hrs	Emp #
ANGLESTEIN, TROY Edward WM	11	436099	BRENNECKE, ANDREW Bailey	11	486345	WOLFE, JON P	11	485217

Equipment

HES Unit #	Distance-1 way	HES Unit #	Distance-1 way	HES Unit #	Distance-1 way	HES Unit #	Distance-1 way
10025118	60 mile	10872429	60 mile	10951251	60 mile	11360881	60 mile
11808847	60 mile						

Job Hours

Date	On Location Hours	Operating Hours	Date	On Location Hours	Operating Hours	Date	On Location Hours	Operating Hours
9/13/2012	11	2						

TOTAL Total is the sum of each column separately

Job

Job Times

Formation Name	Formation Depth (MD)	Top	Bottom	Called Out	Date	Time	Time Zone
Form Type			BHST	On Location	13 - Sep - 2012	00:00	MST
Job depth MD	1167. ft		Job Depth TVD	Job Started	13 - Sep - 2012	03:45	MST
Water Depth			Wk Ht Above Floor	Job Completed	13 - Sep - 2012	13:05	MST
Perforation Depth (MD)	From		To	Job Completed	13 - Sep - 2012	14:03	MST
				Departed Loc	13 - Sep - 2012	15:00	MST

Well Data

Description	New / Used	Max pressure psig	Size in	ID in	Weight lbm/ft	Thread	Grade	Top MD ft	Bottom MD ft	Top TVD ft	Bottom TVD ft
-------------	------------	-------------------	---------	-------	---------------	--------	-------	-----------	--------------	------------	---------------

Sales/Rental/3rd Party (HES)

Description	Qty	Qty uom	Depth	Supplier
PLUG,CMTG,TOP,9 5/8,HWE,8.16 MIN/9.06 MA	1	EA		

Tools and Accessories

Type	Size	Qty	Make	Depth	Type	Size	Qty	Make	Depth	Type	Size	Qty	Make
Guide Shoe					Packer					Top Plug	9.625	1	HES
Float Shoe					Bridge Plug					Bottom Plug			
Float Collar					Retainer					SSR plug set			
Insert Float										Plug Container	9.625	1	HES
Stage Tool										Centralizers			

Miscellaneous Materials

Gelling Agt	Conc	Surfactant	Conc	Acid Type	Qty	Conc	%
Treatment Fld	Conc	Inhibitor	Conc	Sand Type	Size	Qty	

Fluid Data

Stage/Plug #: 1	Fluid #	Stage Type	Fluid Name	Qty	Qty uom	Mixing Density lbm/gal	Yield ft ³ /sk	Mix Fluid Gal/sk	Rate bbl/min	Total Mix Fluid Gal/sk
-----------------	---------	------------	------------	-----	---------	------------------------	---------------------------	------------------	--------------	------------------------

Stage/Plug #: 1

Stage/Plug #: 1									
Fluid #	Stage Type	Fluid Name	Qty	Qty uom	Mixing Density lbm/gal	Yield ft ³ /sk	Mix Fluid Gal/sk	Rate bbl/min	Total Mix Fluid Gal/sk
1	Water Spacer		20.00	bbl	8.33	.0	.0	4	
2	Lead Cement	VERSACEM (TM) SYSTEM (452010)	160.0	sacks	12.3	2.38	13.75	7	13.75
3	Tail Cement	VERSACEM (TM) SYSTEM (452010)	160.0	sacks	12.8	2.11	11.75	6	11.75
4	Displacement		87.00	bbl	8.33	.0	.0	10	
Calculated Values		Pressures		Volumes					
Displacement	87.1	Shut In: Instant		Lost Returns	0	Cement Slurry	128	Pad	
Top Of Cement	SURFACE	5 Min		Cement Returns	25	Actual Displacement	87.1	Treatment	
Frac Gradient		15 Min		Spacers	20	Load and Breakdown		Total Job	435
Rates									
Circulating	10	Mixing	7	Displacement	10	Avg. Job	8		
Cement Left In Pipe	Amount	42.61 ft	Reason	Shoe Joint					
Frac Ring # 1 @	ID	Frac ring # 2 @	ID	Frac Ring # 3 @	ID	Frac Ring # 4 @	ID		
The Information Stated Herein Is Correct				Customer Representative Signature					

The Road to Excellence Starts with Safety

Sold To #: 300721		Ship To #: 2949275		Quote #:		Sales Order #: 9788247	
Customer: WPX ENERGY ROCKY MOUNTAIN LLC-EBUS				Customer Rep: Moore, Frank			
Well Name: RWF			Well #: 413-35			API/UWI #: 05-045-20520	
Field: RULISON		City (SAP): RIFLE		County/Parish: Garfield			State: Colorado
Legal Description:							
Lat: N 39.483 deg. OR N 39 deg. 28 min. 59.887 secs.				Long: W 107.863 deg. OR W -108 deg. 8 min. 13.412 secs.			
Contractor:			Rig/Platform Name/Num: NABORS 576				
Job Purpose: Cement Surface Casing						Ticket Amount:	
Well Type: Development Well			Job Type: Cement Surface Casing				
Sales Person: MAYO, MARK			Srv Supervisor: ANGLESTEIN, TROY			MBU ID Emp #: 436099	

Activity Description	Date/Time	Cht #	Rate bbl/min	Volume bbl		Pressure psig		Comments
				Stage	Total	Tubing	Casing	
Call Out	09/13/2012 00:00							
Pre-Convoy Safety Meeting	09/13/2012 02:30							ALL HES EMPLOYEES
Arrive At Loc	09/13/2012 03:45							RIG STILL RUNNING CASING CIRCULATED FOR 1 HOUR
Assessment Of Location Safety Meeting	09/13/2012 04:00							ALL HES EMPLOYEES
Rig-Up Equipment	09/13/2012 11:30							1 HT 400 PUMP TRUCK, 1 660 BULK TRUCK, 1 9.625 QUICK LATCH PLUG CONTAINER, 1 F 450 P/U
Pre-Job Safety Meeting	09/13/2012 12:50							ALL HES EMPLOYEES, RIG CREW, CO REP.
Start Job	09/13/2012 13:05							9.625 CASING SET AT 1110.80', FC 1068.19', LANDING JOINT: 38' TD: 1155, OPEN HOLE 13.5", MUD WT 10.2 PPG, 800 BBLS OF H2O ON LOCATION, WATER SAMPLE SUBMITTED.
Pump Water	09/13/2012 13:06		2	2			33.0	FILL LINES
Pressure Test	09/13/2012 13:07		0.5	0.5		3977.0		NO LEAKS
Pump Spacer 1	09/13/2012 13:10		4	20			87.0	FRESH WATER
Activity Description	Date/Time	Cht #	Rate bbl/min	Volume bbl		Pressure psig		Comments
				Stage	Total	Tubing	Casing	

Cementing Job Log

Pump Lead Cement	09/13/2012 13:19		7	67.8			170.0	160 SKS VERSACEM CMT TO BE MIXED AT 12.3 PPG, 2.38 YIELD, 13.75 GAL/SK, CMT TO BE WEIGHED VIA PRESSURE BALANCED MUD SCALES WET AND DRY SAMPLES SUBMITTED
Pump Tail Cement	09/13/2012 13:31		6	60.1			160.0	160 SKS VERSACEM CMT TO BE MIXED AT 12.8 PPG, 2.11 YIELD, 11.75 GAL/SK, CMT TO BE WEIGHED VIA PRESSURE BALANCED MUD SCALES. WET AND DRY SAMPLES SUBMITTED. HES UNABLE TO PUMP 8 BPM DUE TO CEMENT DELIVERY, SLOWED RATE TO MAINTAIN DENSITY
Shutdown	09/13/2012 13:41							FOR NO MORE THEN 5 MINUTES,
Drop Plug	09/13/2012 13:45							PLUG LAUNCHED
Pump Displacement	09/13/2012 13:46		10	87.1			505.0	FRESHWATER
Cement Returns to Surface	09/13/2012 13:51		10	62			421.0	25 BBLS OF CEMENT TO SURFACE.
Slow Rate	09/13/2012 13:56		2	77.1			210.0	10 BBLS PRIOR TO CALCULATED DISPLACEMENT
Bump Plug	09/13/2012 14:00		2	87.1			230.0	PLUG LANDED AT 730 HELD FOR TWO MINUTES
Check Floats	09/13/2012 14:02							FLOATS HOLDING, NO ANNULAR FLOW NOTED
End Job	09/13/2012 14:03							THANK YOU FOR USING HES FROM TROY ANGLESTEIN AND CREW.
Post-Job Safety Meeting (Pre Rig-Down)	09/13/2012 14:10							ALL HES EMPLOYEES
Rig-Down Equipment	09/13/2012 14:30							SAFELY
Pre-Convoy Safety Meeting	09/13/2012 14:45							ALL HES EMPLOYEES

Cementing Job Log

Activity Description	Date/Time	Cht #	Rate bbl/ min	Volume bbl		Pressure psig		Comments
				Stage	Total	Tubing	Casing	
Crew Leave Location	09/13/2012 15:00							SITE WAS AS CLEAN AS WHEN WE ARRIVED

Sold To # : 300721

Ship To # :2949275

Quote # :

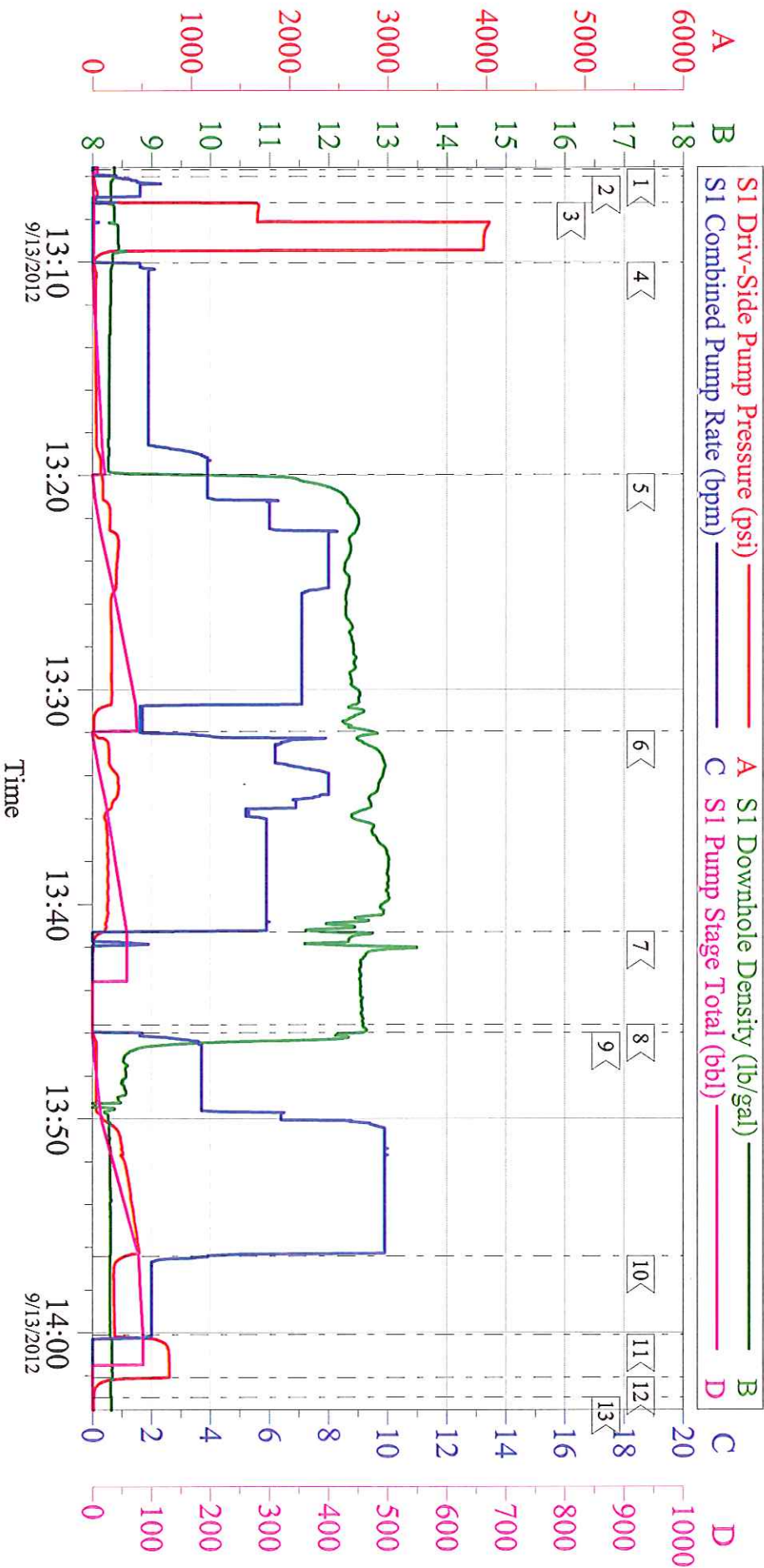
Sales Order # : 9788247

SUMMIT Version: 7.3.0040

Tuesday, September 25, 2012 03:28:00

WPX ENERGY - RWF 413-35

SURFACE



Local Event Log

1 < START JOB	13:05:41	2 < FILL LINES	13:06:01	3 < TEST LINES	13:07:15
4 < PUMP H2O SPACER	13:10:03	5 < PUMP LEAD CEMENT	13:19:57	6 < PUMP TAIL CEMENT	13:31:57
7 < SHUTDOWN	13:41:18	8 < DROP PLUG	13:45:37	9 < PUMP DISPLACEMENT	13:46:00
10 < SLOW RATE	13:56:26	11 < BUMP PLUG	14:00:06	12 < CHECK FLOATS	14:02:06
13 < END JOB	14:03:01				

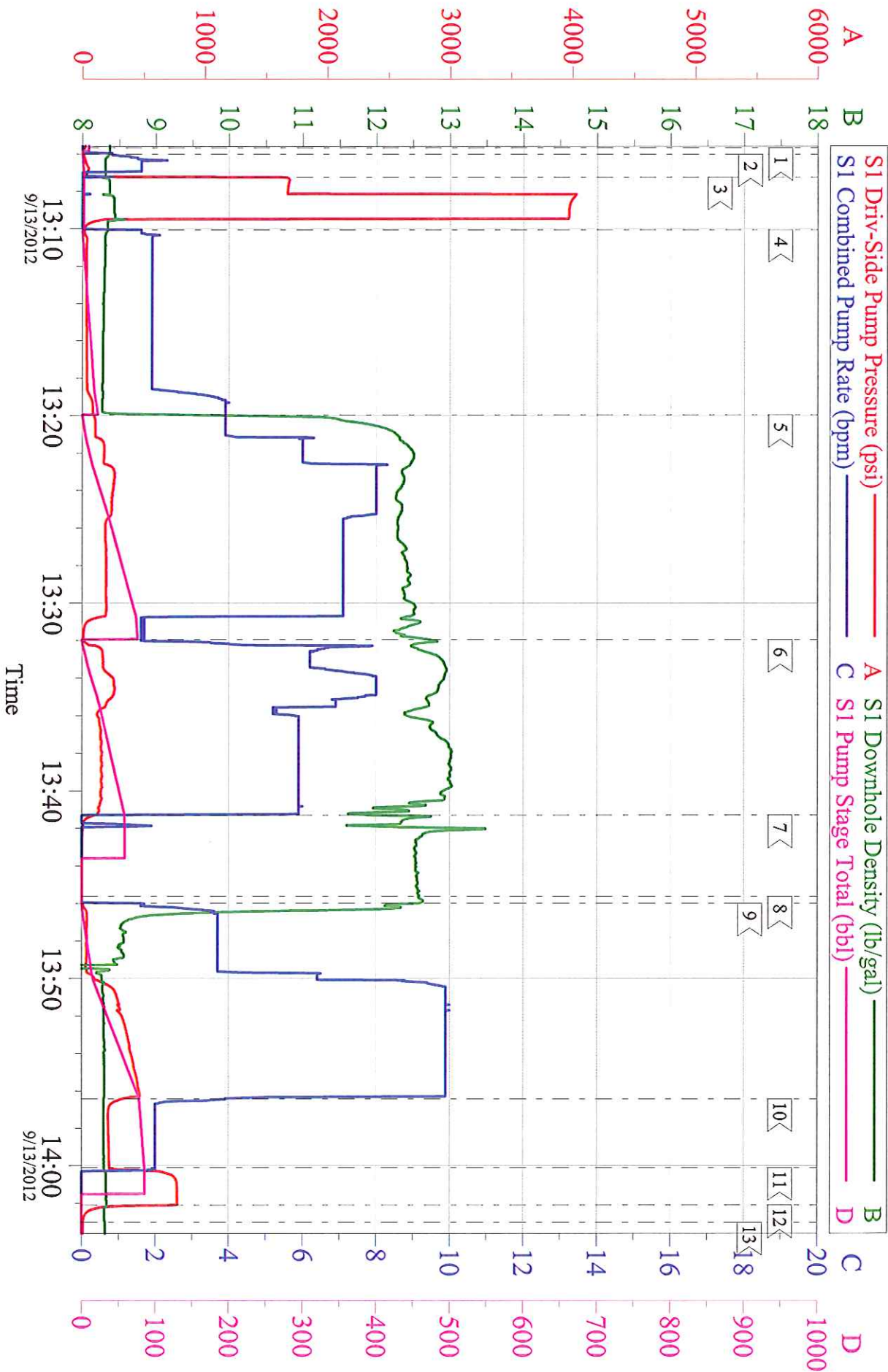
Customer: WPX ENERGY
 Well Description: RWF 413-35
 Company Rep: FRANK MOORE

Job Date: 13-Sep-2012
 Job Type: SURFACE
 Cement Supervisor: TROY ANGLESTEIN

Sales Order #: 9788247
 ADC Used: YES
 Elite #: 7: ANDREW BRENNHECKE

WPX ENERGY - RWF 413-35

SURFACE



Customer:	WPX ENERGY	Job Date:	13-Sep-2012	Sales Order #:	9788247
Well Description:	RWF 413-35	Job Type:	SURFACE	ADC Used:	YES
Company Rep:	FRANK MOORE	Cement Supervisor:	TROY ANGLESTEIN	Elite # 7:	ANDREW BRENNHECKE