



CEMENT BOND  
GAMMA RAY  
COLLAR LOG

Company	SUNDANCE ENERGY INC.		
Well	MLD 21-22		
Field	WATTENBERG		
County	WELD		
State	COLORADO	Country	US
Company SUNDANCE ENERGY INC.		Well	MLD 21-22
Field WATTENBERG		County	WELD
State COLORADO		Country	US
Location:	API #: 05-123-36095-00		Other Services
SHL: 854' FNL & 1335' FWL NW/NW BHL: 628' FNL & 1988' FWL NE/NW SEC 22 TWP 4N RGE 68W		NONE	
Permanent Datum	GROUND LEVEL	Elevation	4877
Log Measured From	KELLY BUSHING	K.B.	4893
Drilling Measured From	KELLY BUSHING	D.F.	4892
		G.L.	4877

Date	12-12-12			
Run Number	ONE			
Depth Driller	7018			
Depth Logger	6907			
Bottom Logged Interval	6896			
Top Log Interval	2397			
Open Hole Size	7 7/8			
Type Fluid	WATER			
Density / Viscosity	---			
Max. Recorded Temp.	NOT RECORDED			
Estimated Cement Top	2648			
Time Well Ready	ROA			
Time Logger on Bottom	---			
Equipment Number	HD-0255			
Location	FT. LUPION			
Recorded By	GREG JACKSON			
Witnessed By	DEAN ROGERS			
Borehole Record				
Run Number	Bit	From	To	Size
				Weight
				From
				To
Tubing Record				
Casing Record	Size	Wgt/Ft	Top	Bottom
Surface String	8 5/8	NA	SURFACE	572
Prot. String				
Production String	4 1/2	11.6	SURFACE	TOTAL DEPTH
Liner				

>>> Fold Here >>>

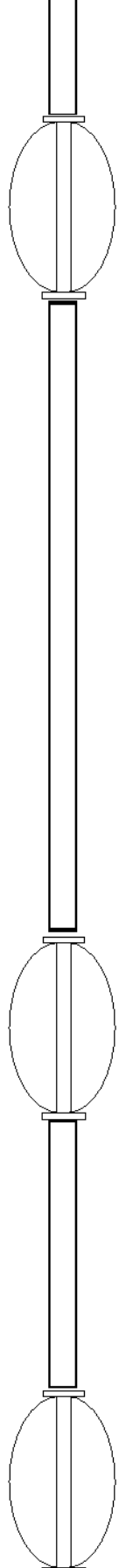
All interpretations are opinions based on inferences from electrical or other measurements and we cannot and do not guarantee the accuracy or correctness of any interpretation, and we shall not, except in the case of gross or willful negligence on our part, be liable or responsible for any loss, costs, damages, or expenses incurred or sustained by anyone resulting from any interpretation made by any of our officers, agents or employees. These interpretations are also subject to our general terms and conditions set out in our current Price Schedule.

Comments

LOG CORRELATED TO PIONEER OPEN HOLE LOG DATED 09-NOV-2012  
LOGGED WITH ZERO PSI @ SURFACE  
ESTIMATED CEMENT TOP IS 2648  
LOGGED FROM TD TO 250' ABOVE TOP OF CEMENT

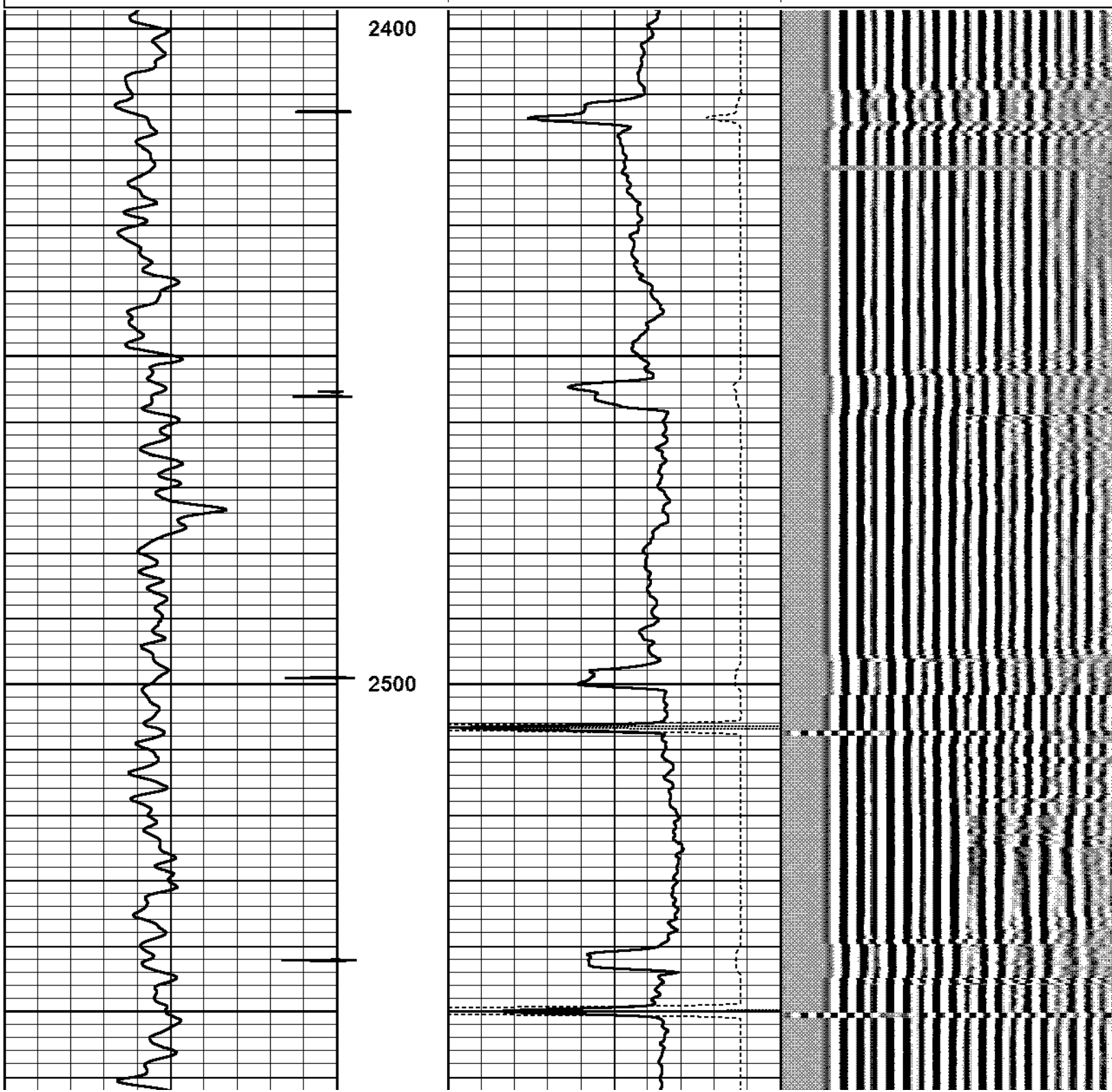
THANK YOU FOR CHOOSING PURE ENERGY WIRELINE AN FMC TECHNOLOGIES COMPANY

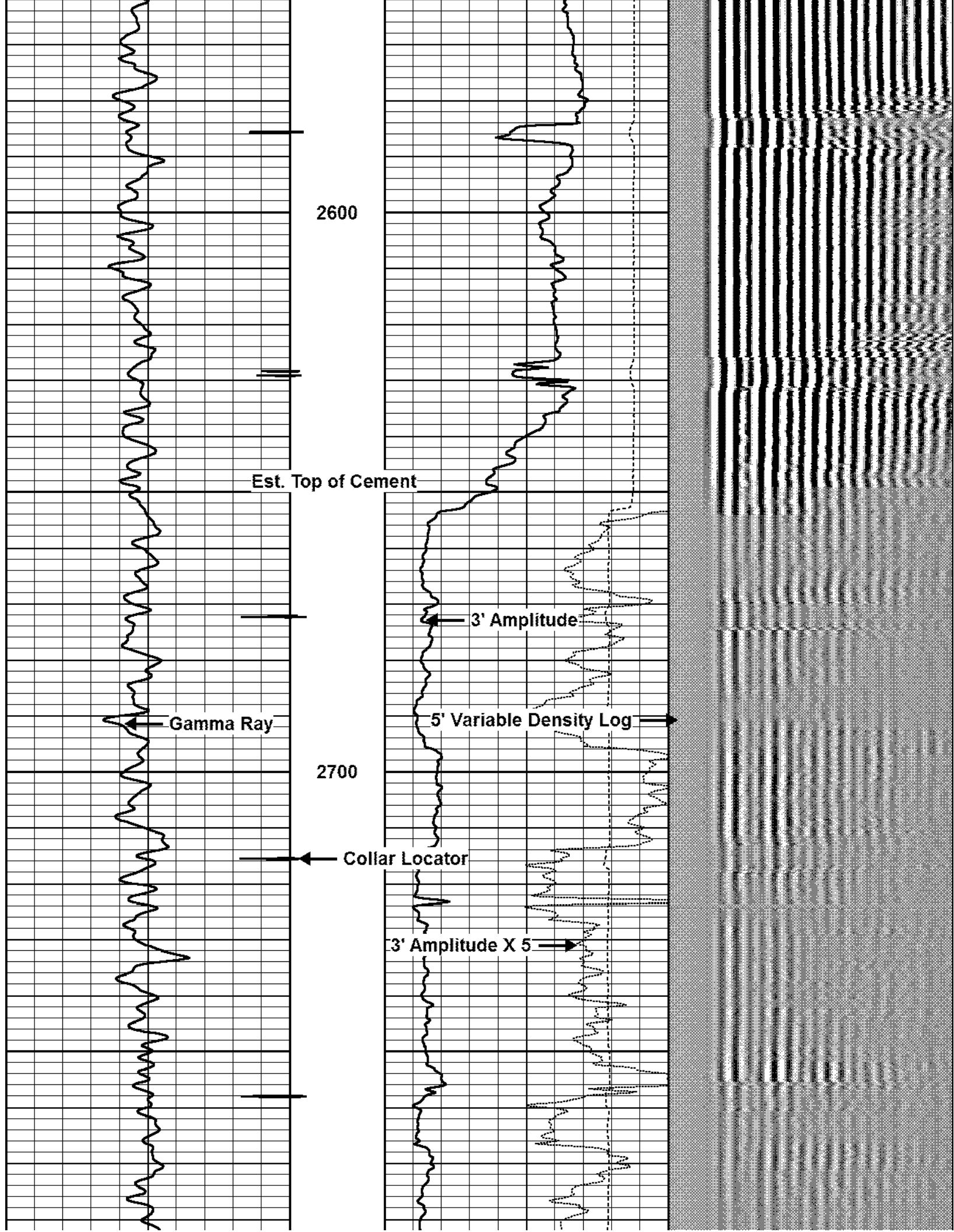
Sensor	Offset (ft)	Schematic	Description	Len (ft)	OD (in)	Wt (lb)
			AES1563 Applied Science 1-7/16" cablehead with 1" fishing neck	1.04	1.56	2.00

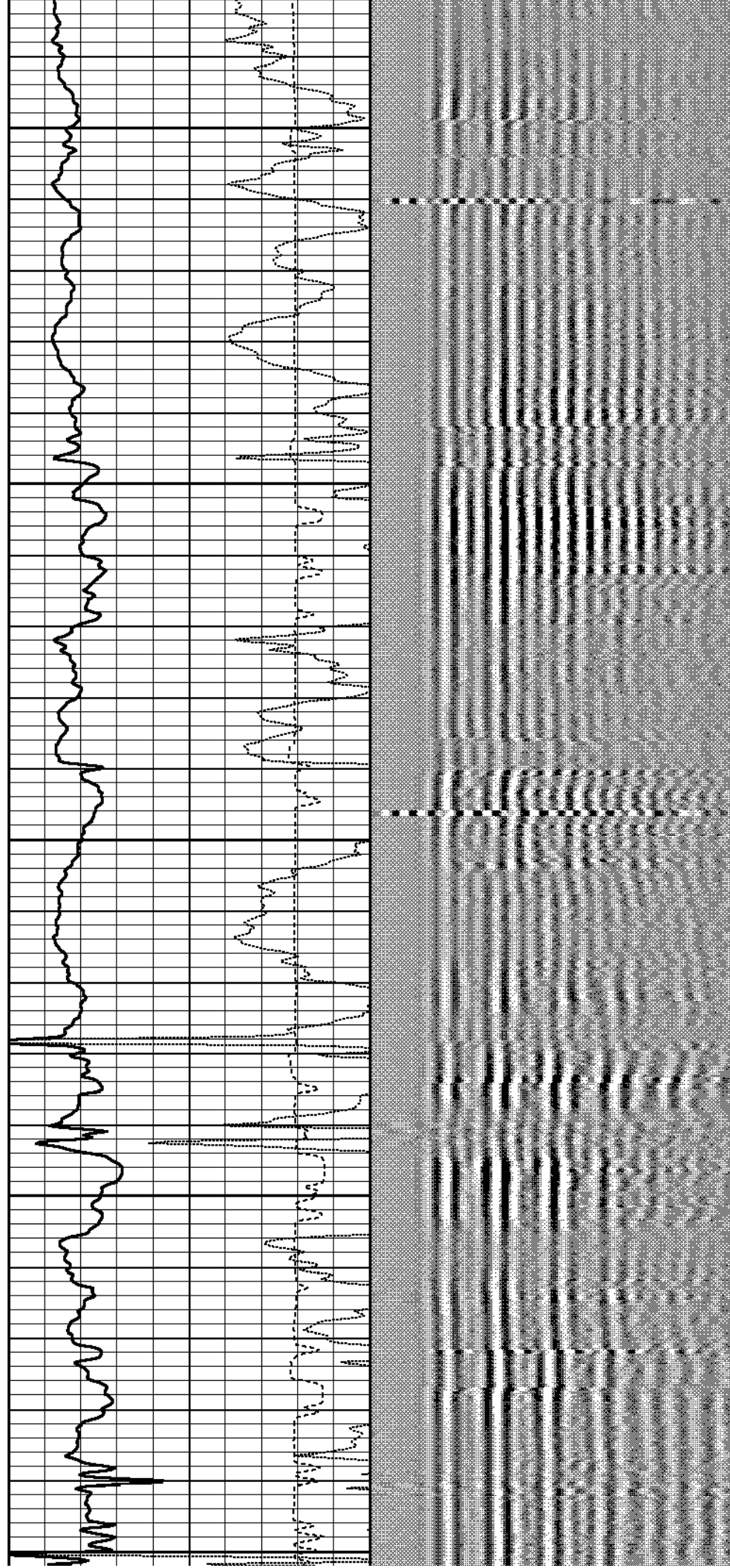
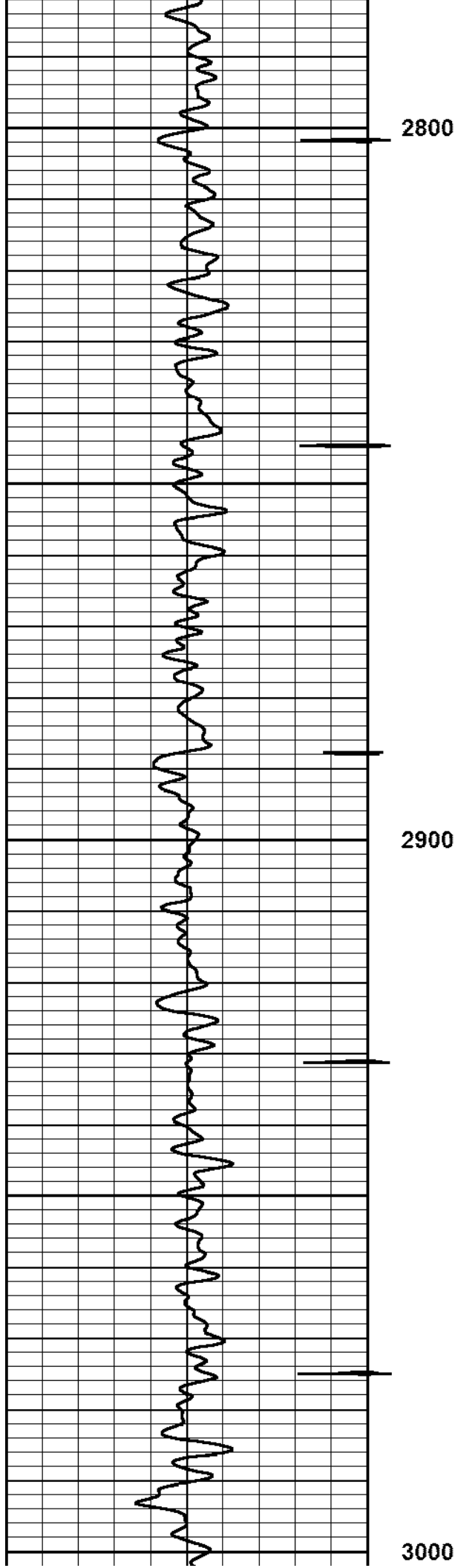
CCL	22.39		CCL_LOG-TypeC (CCCC) Titan 2-3/4" Logging CCL w/ short body	1.92	2.75	30.00
			AES_4arm_IL AES bowspring inline electrical centralizer - 32.75"	2.73	2.75	20.00
WVF3FT	14.63		Sondex_RBT007-RBT_007 (1234) 3-1/8" Sondex Analog RBT Model 007	9.47	3.13	119.00
WVFS1	14.63					
WVFS2	14.63					
WVFS3	14.63					
WVFS4	14.63					
WVFS5	14.63					
WVFS6	14.63					
WVFS7	14.63					
WVFS8	14.63					
WVF5FT	13.63					
			AES_4arm_IL AES bowspring inline electrical centralizer - 32.75"	2.73	2.75	20.00
			GR-TypeC (CCCC) Titan 2-3/4" Scintillating Gamma Ray	4.02	2.75	46.00
GR	4.01		AES_4arm_IL AES bowspring inline electrical centralizer - 32.75"	2.73	2.75	20.00
<div>Dataset: sundance_mid_21-22_cbl.db: field/well/run1/pass4</div> <div>Total Length: 24.64 ft</div> <div>Total Weight: 257.00 lb</div> <div>O.D. 3.13 in</div>						

Database File: sundance\_mid\_21-22\_cbl.db  
 Dataset Pathname: main2  
 Presentation Format: cbl  
 Dataset Creation: Wed Dec 12 14:49:55 2012 by Calc SCH 111116  
 Charted by: Depth in Feet scaled 1:240

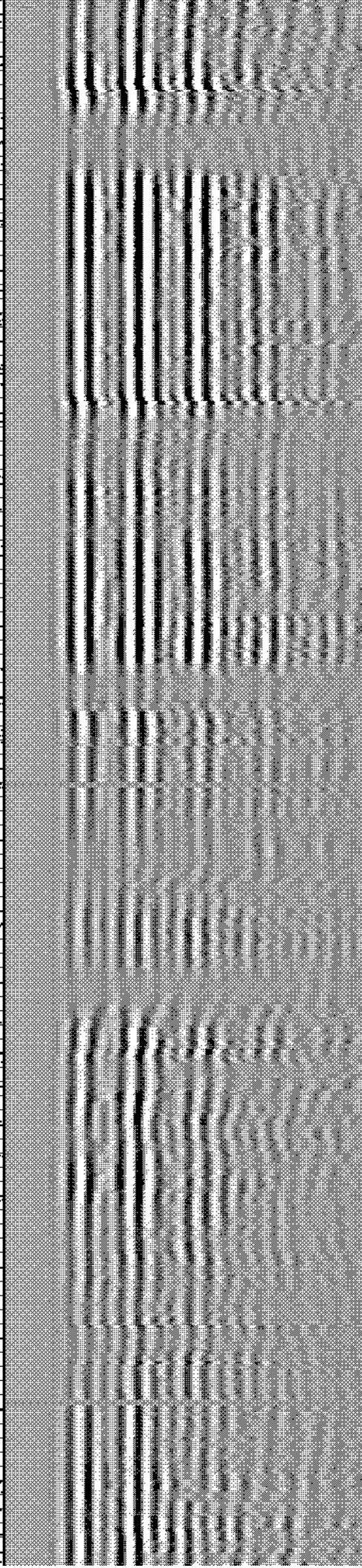
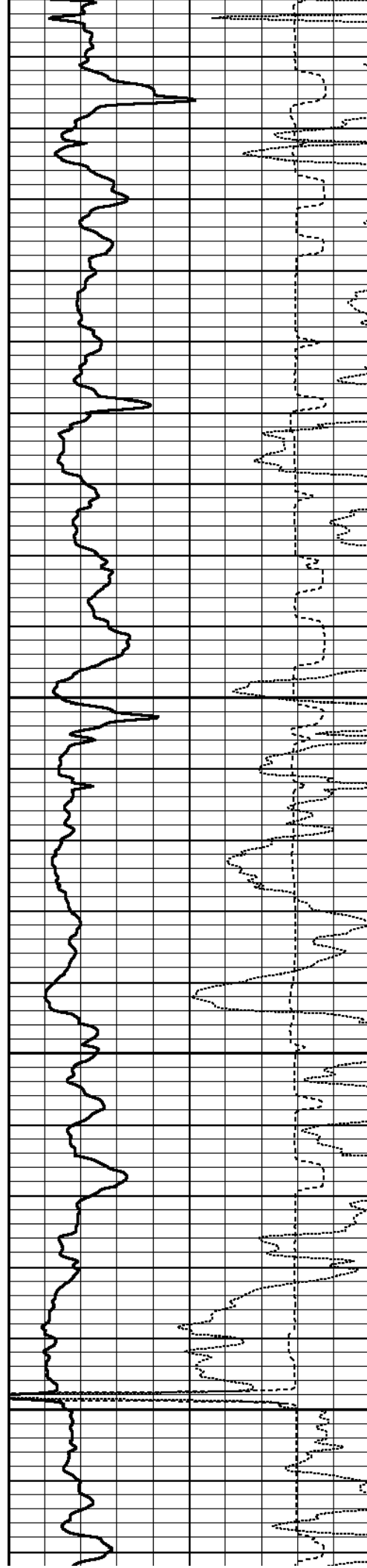
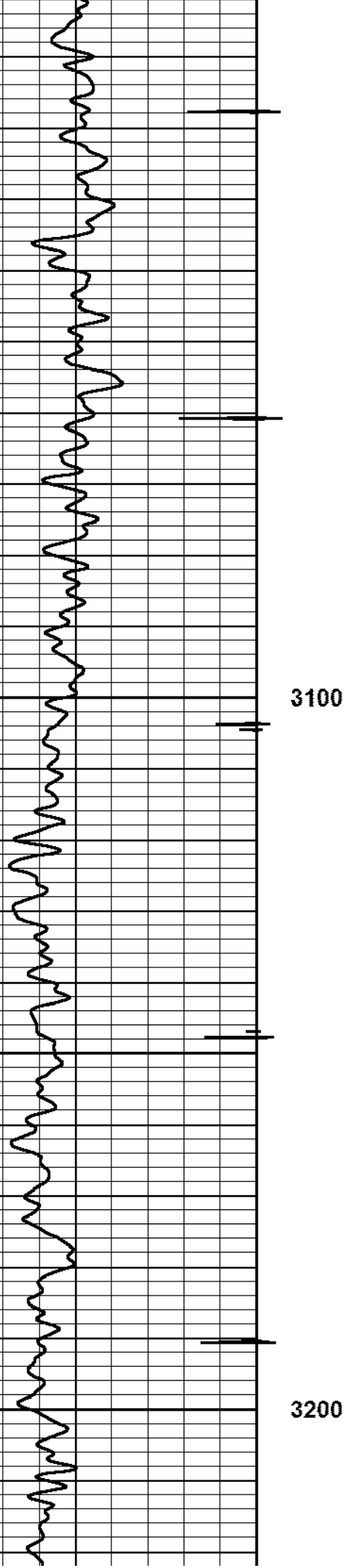
Collar Locator			0	3' Amplitude X 5 (mV)	20	5' Variable Density Log	
0	Gamma Ray	150	0	3' Amplitude (mV)	100	200	1200
			650	3' Travel Time (usec)	150		

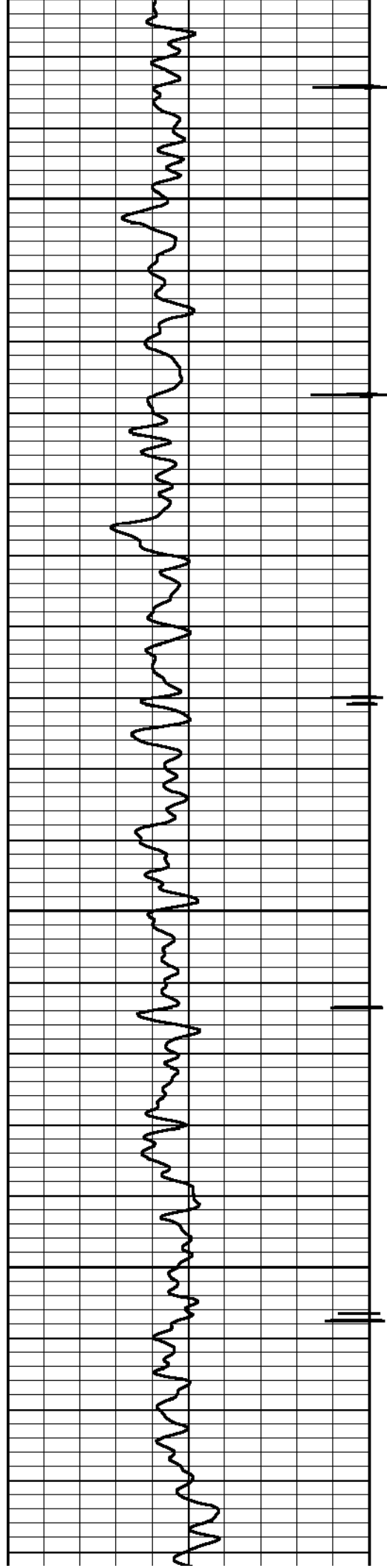






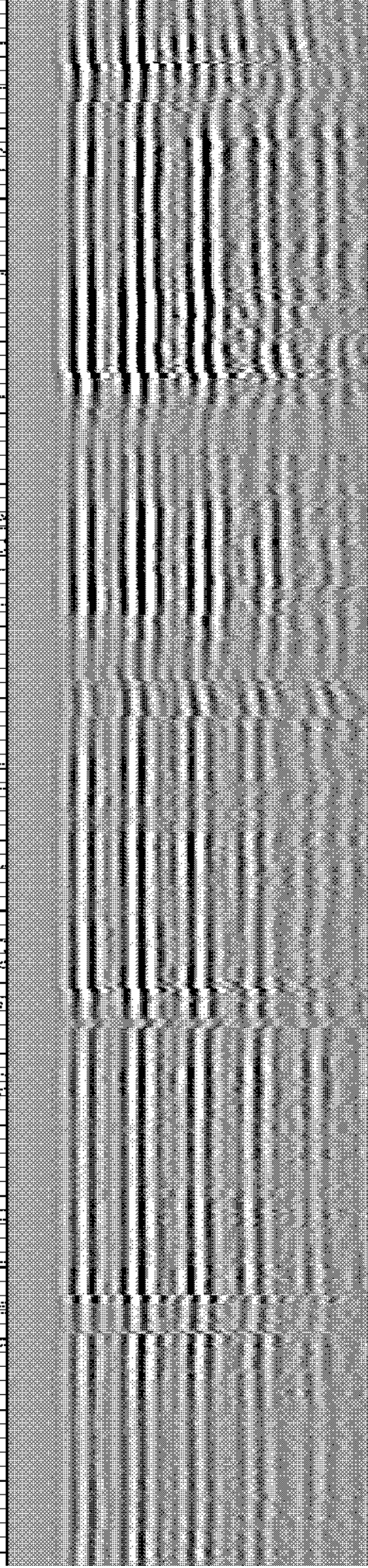
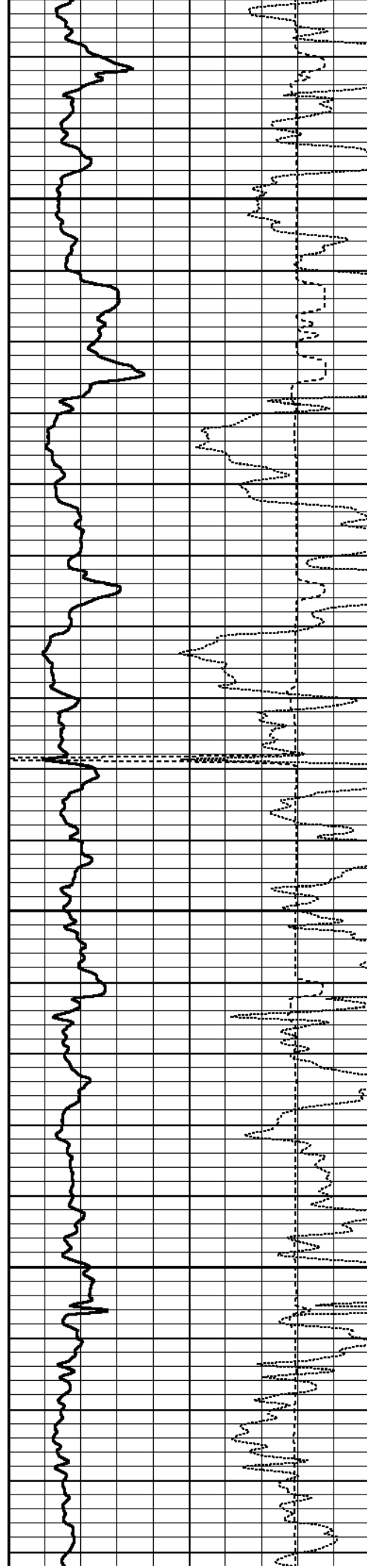


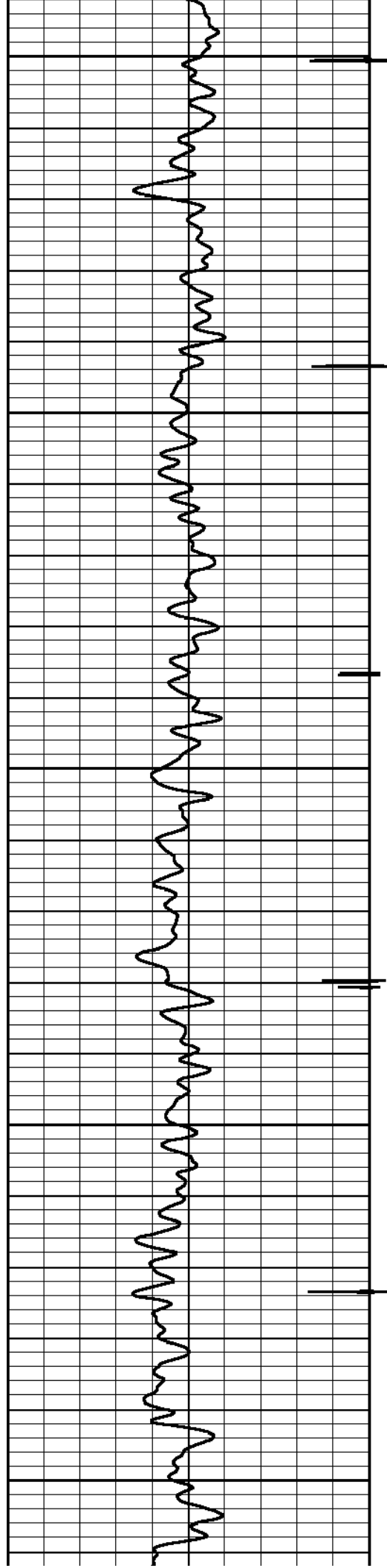




3300

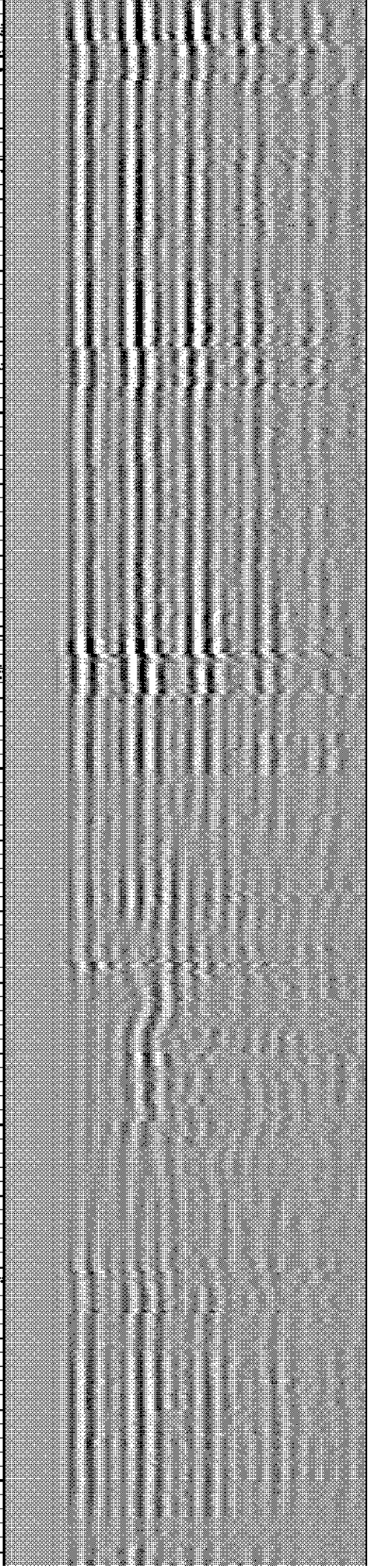
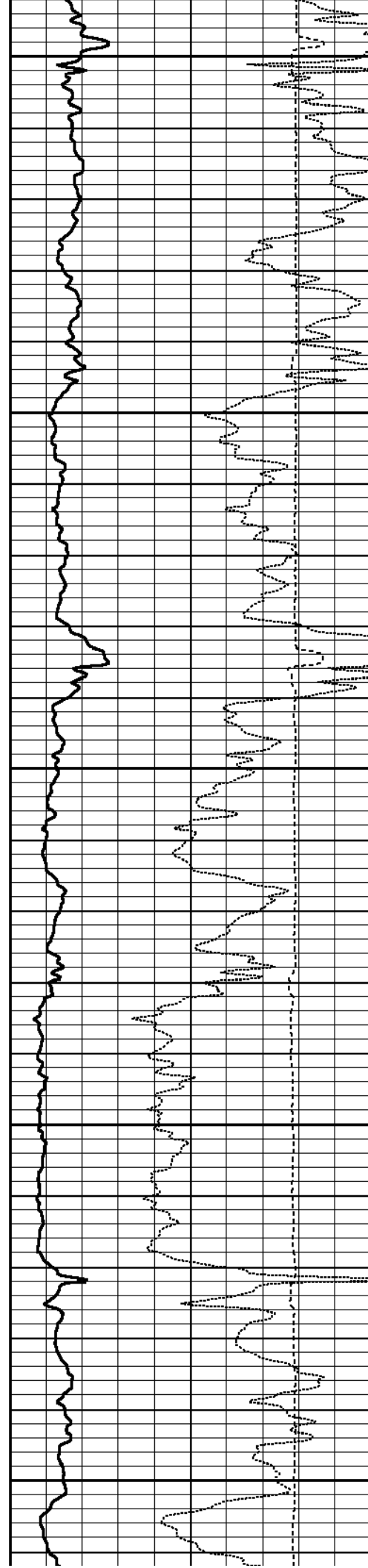
3400



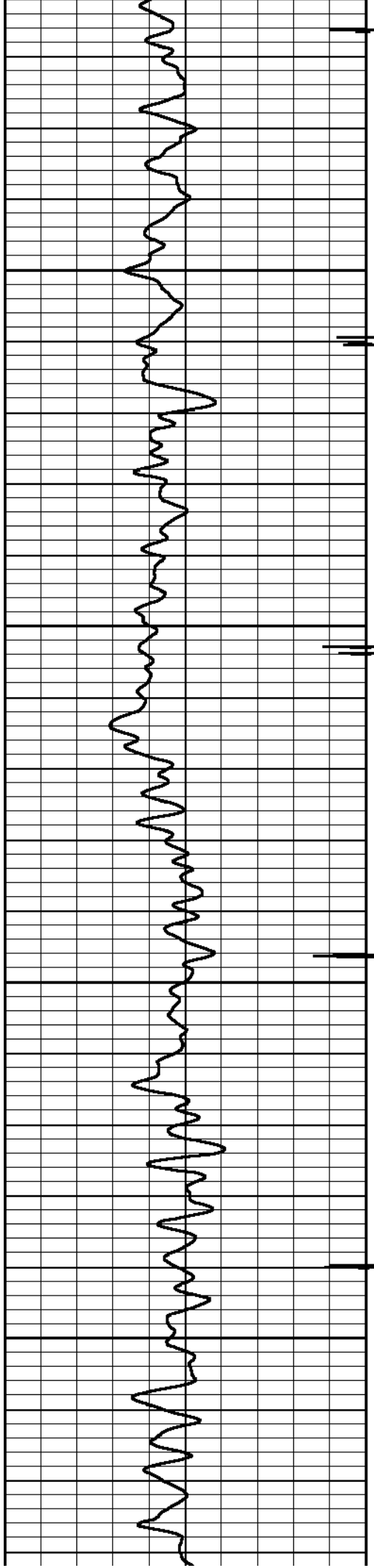


3500

3600

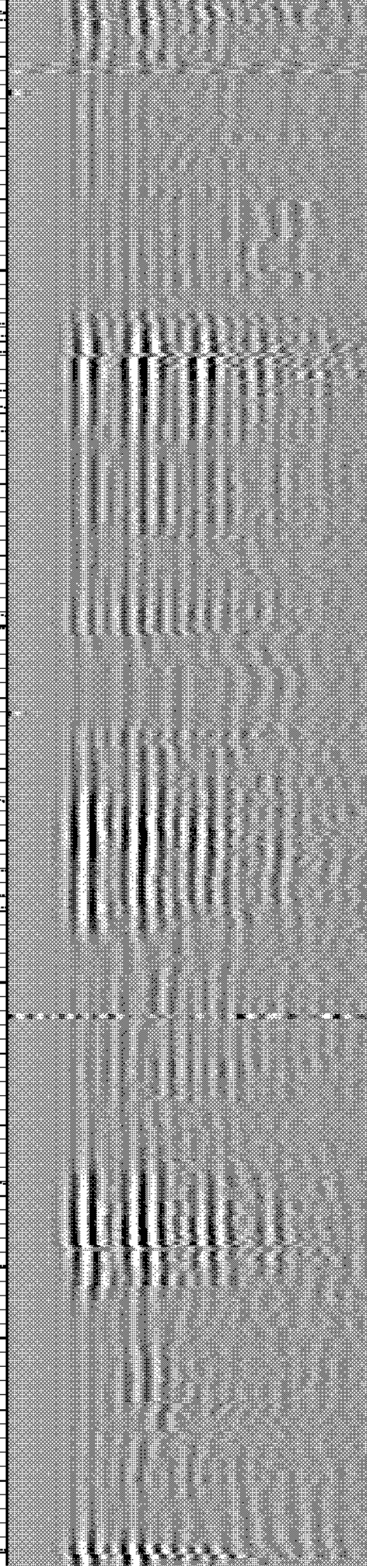
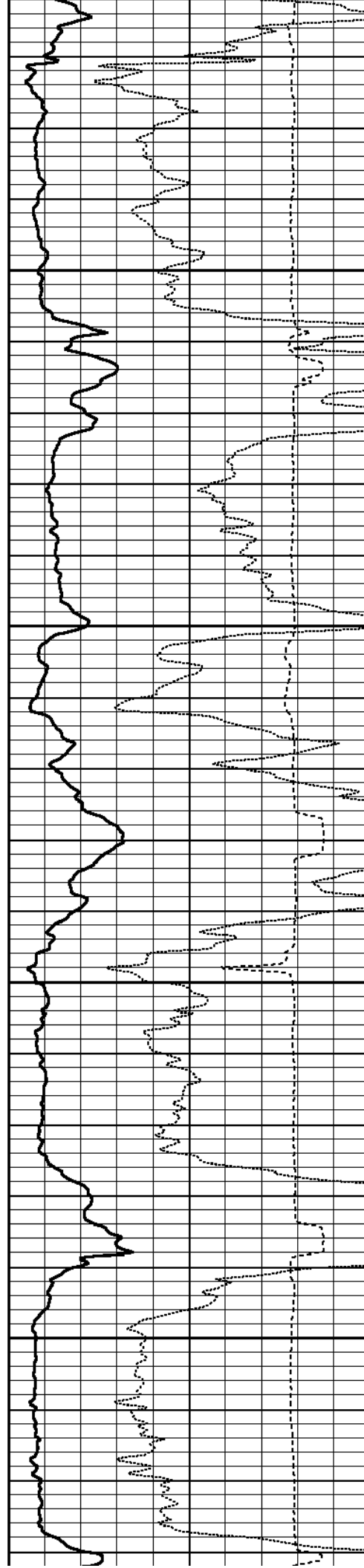


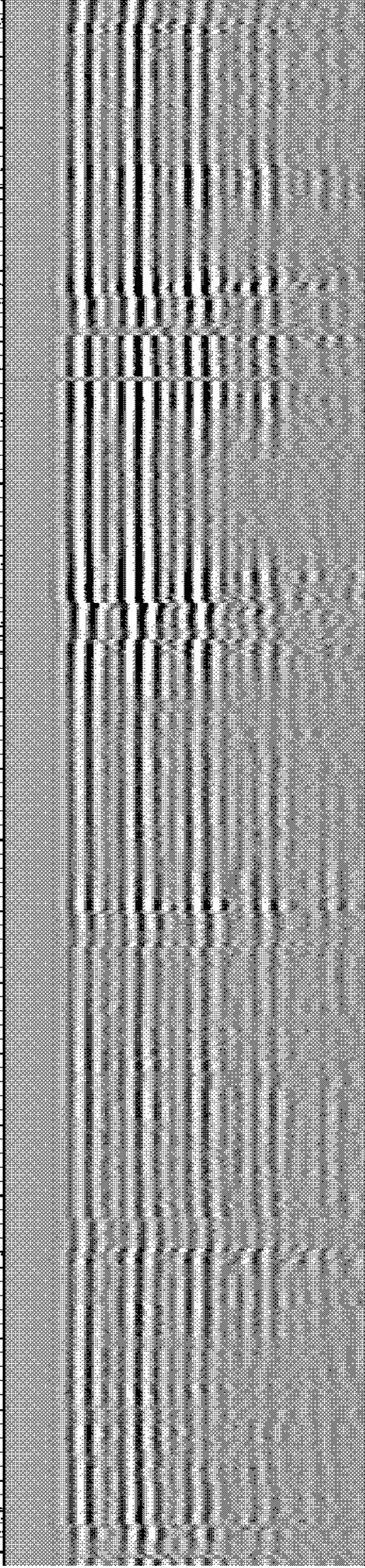
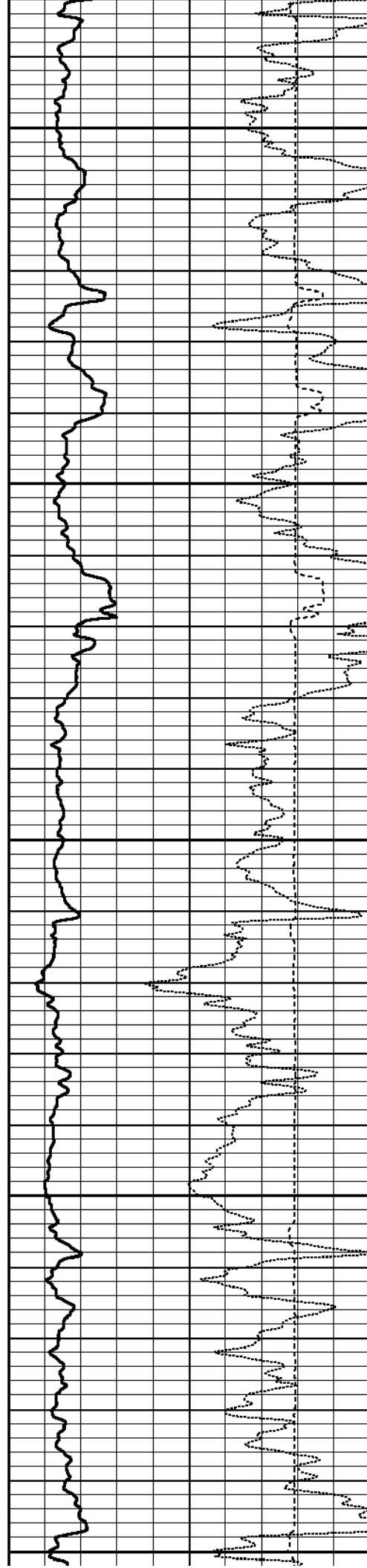
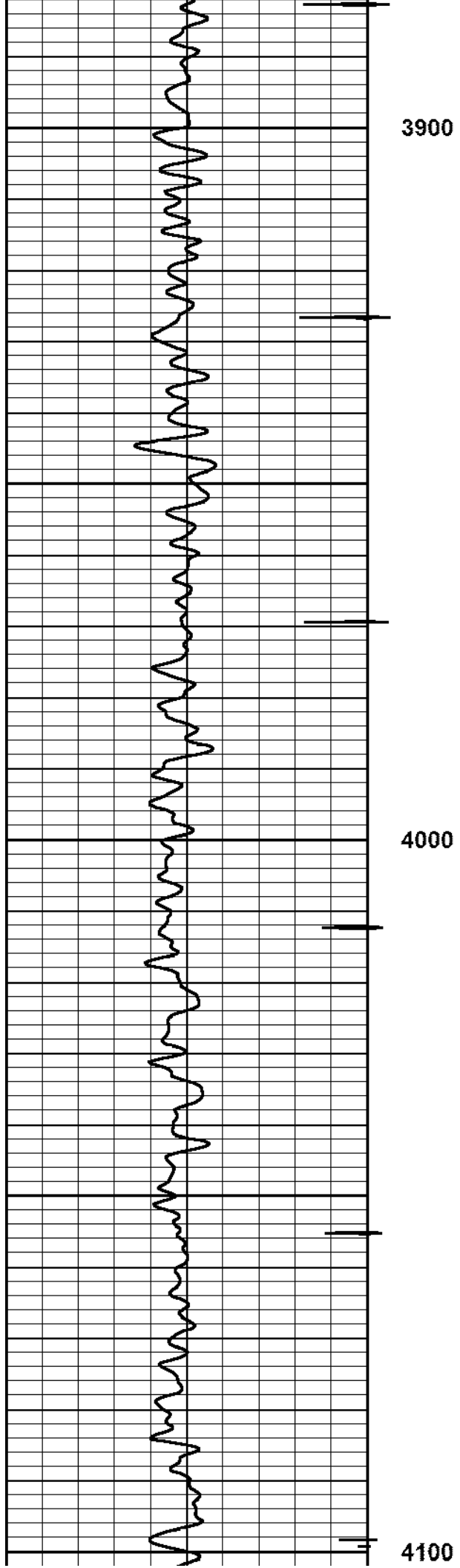


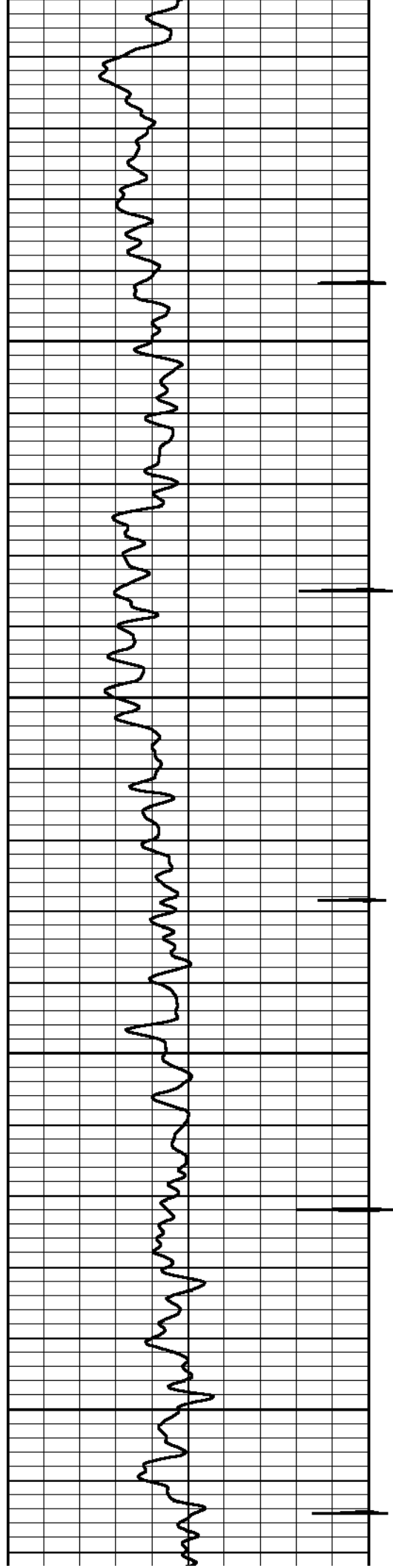


3700

3800

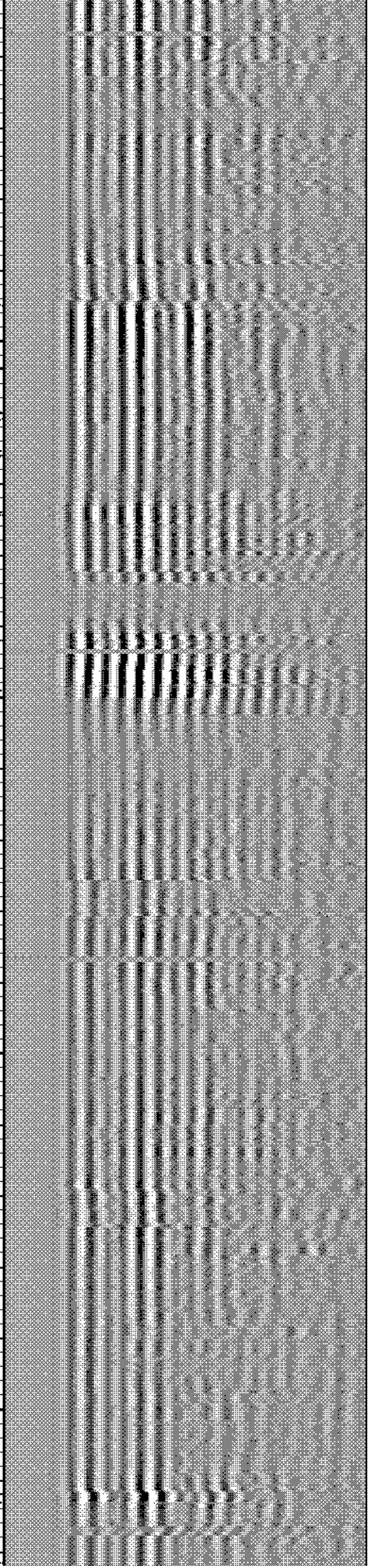
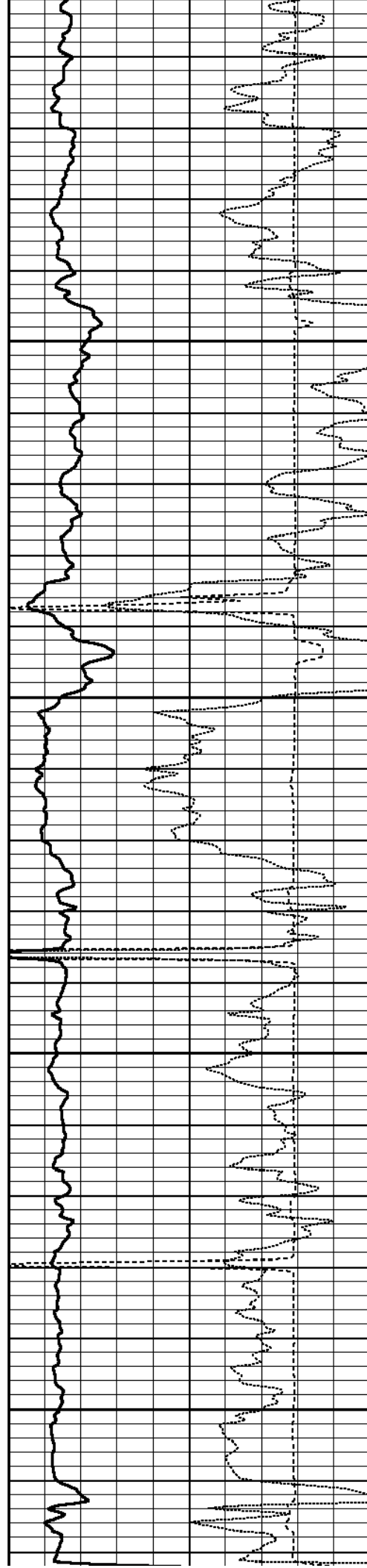




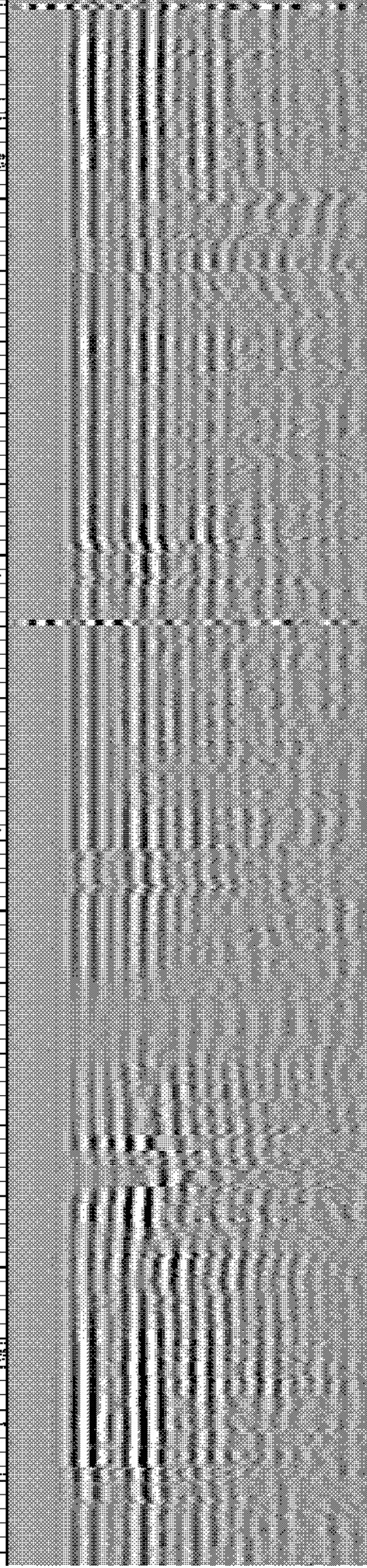
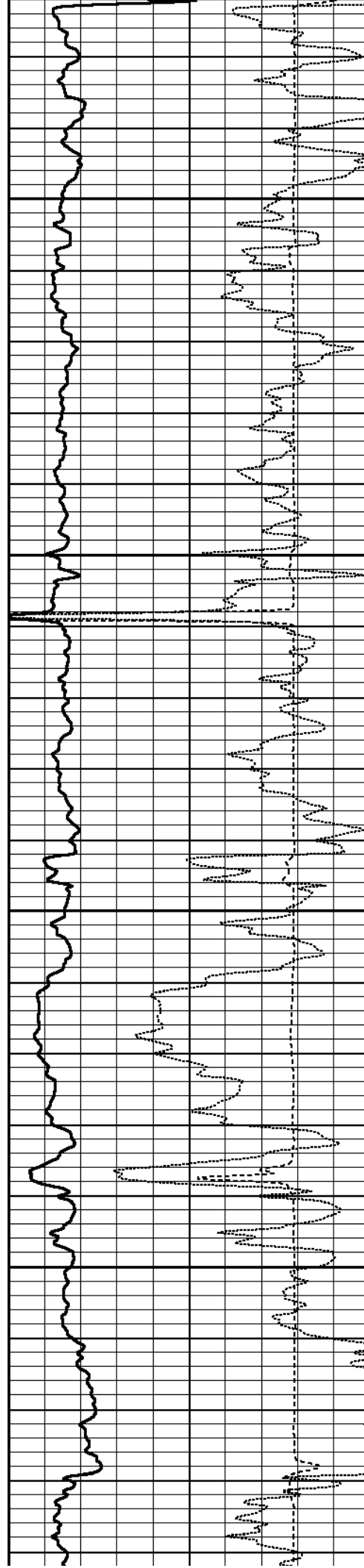
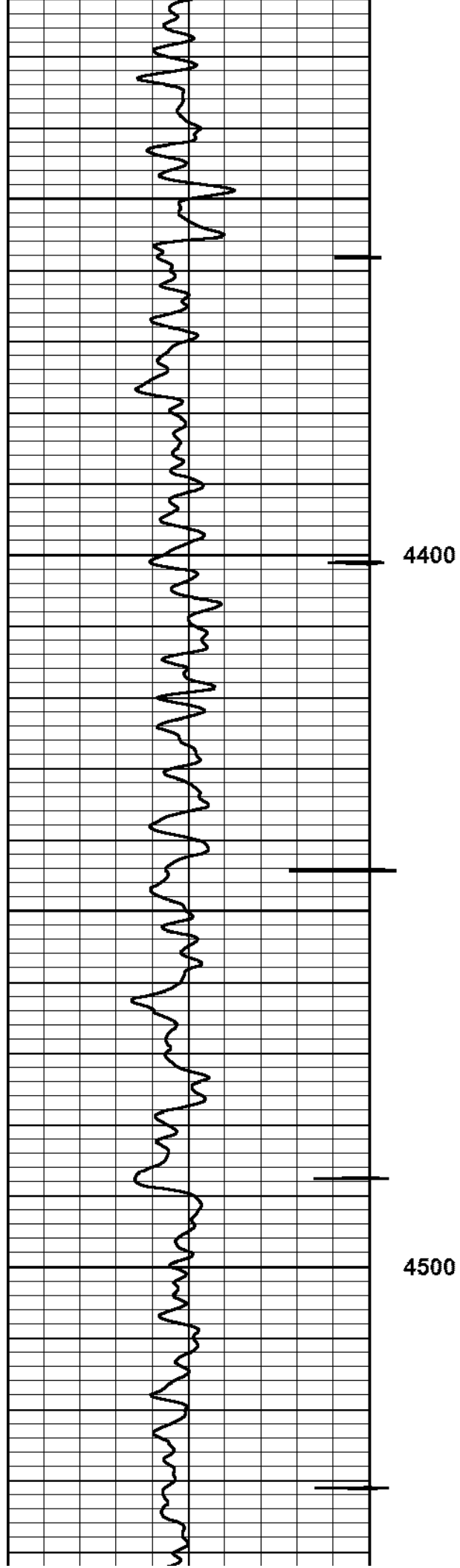


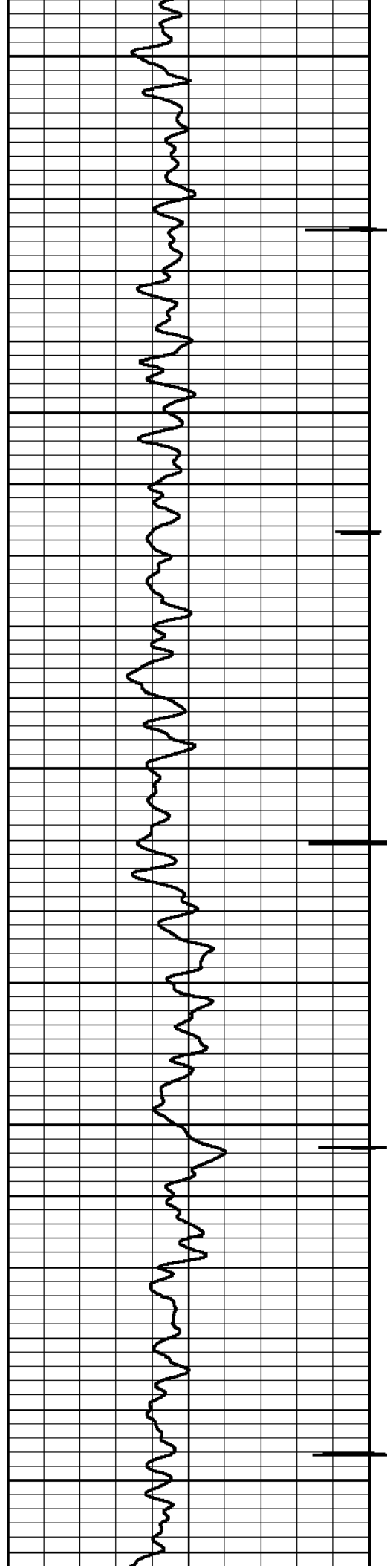
4200

4300



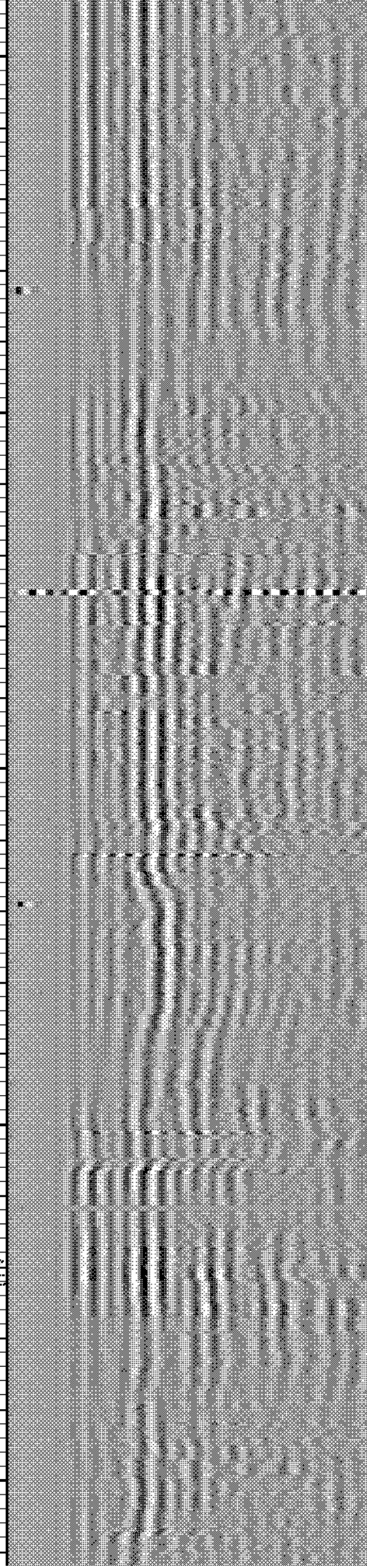
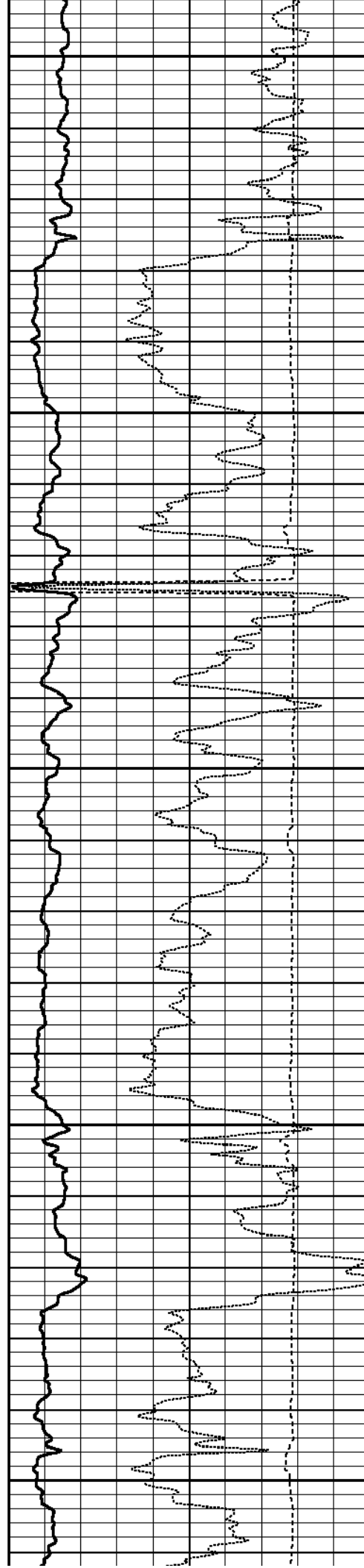




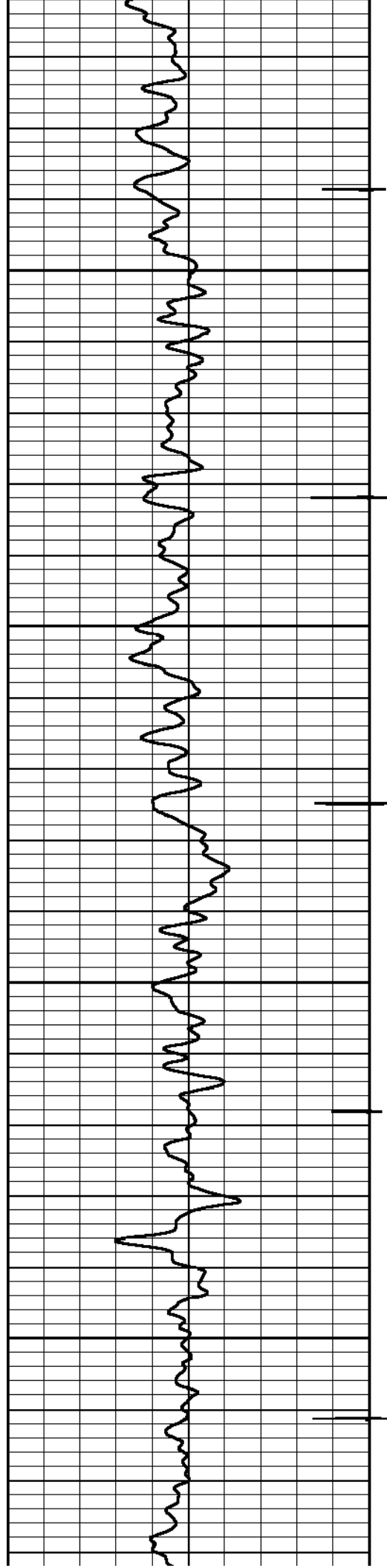


4600

4700

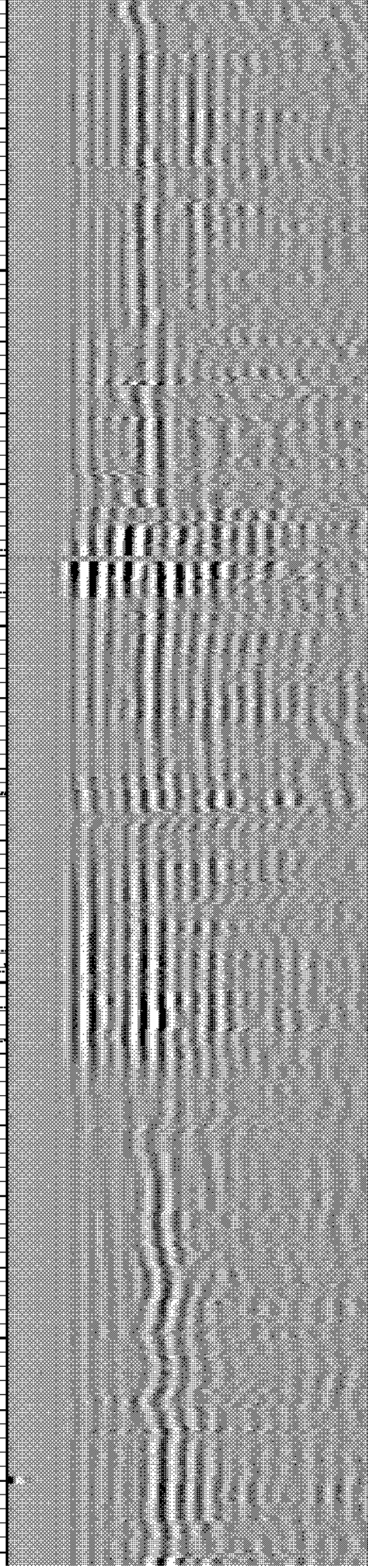
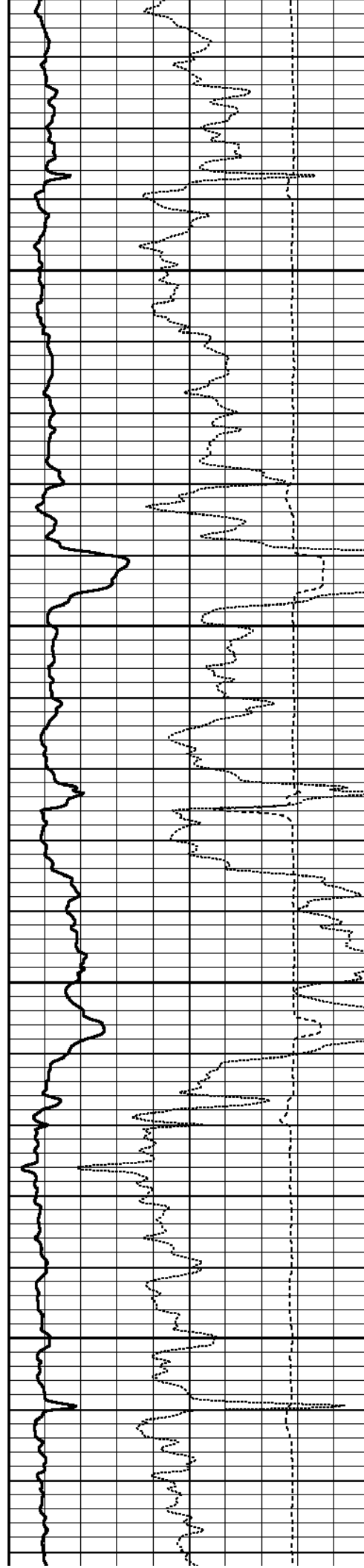


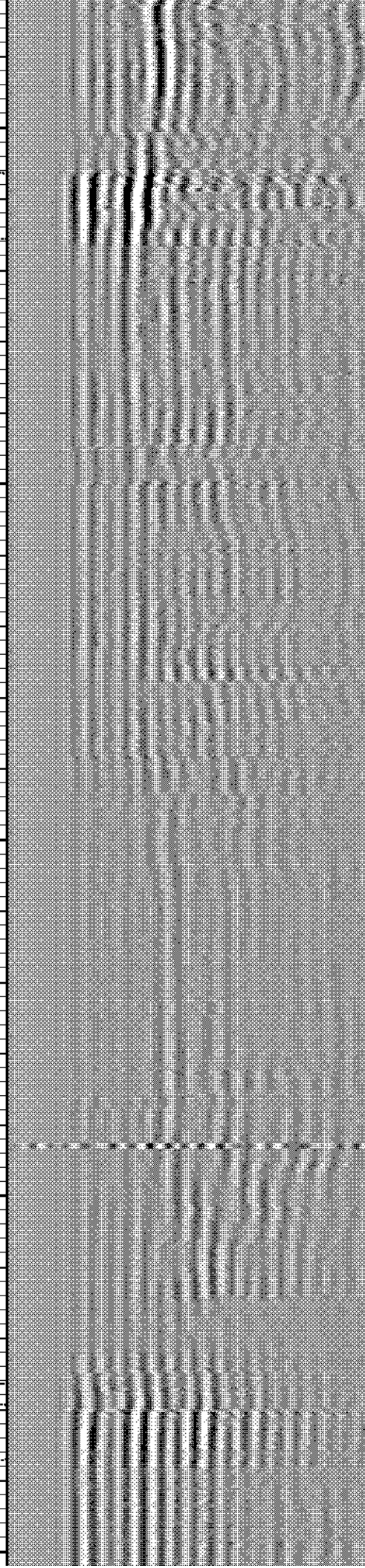
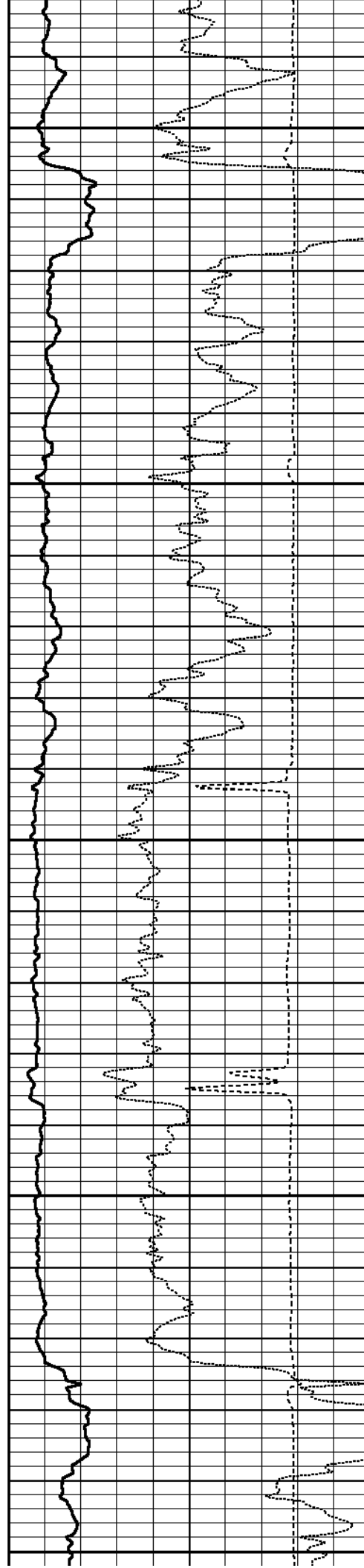
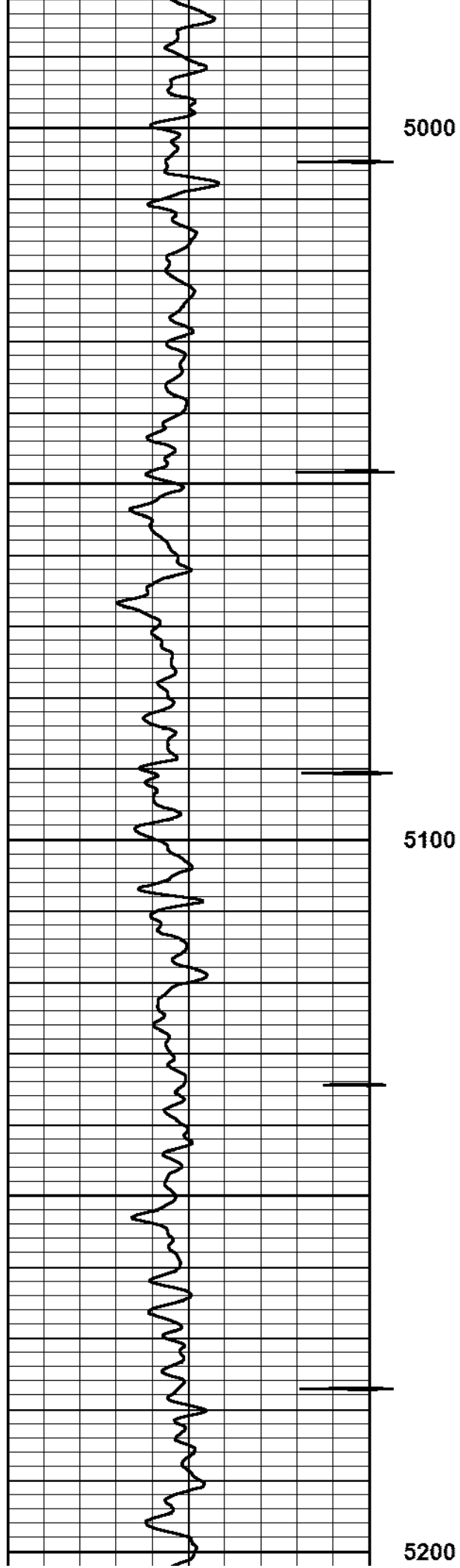


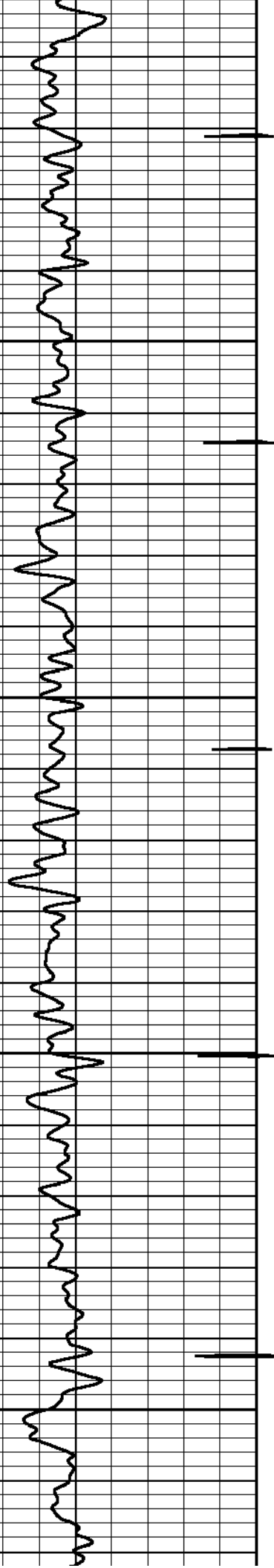


4800

4900

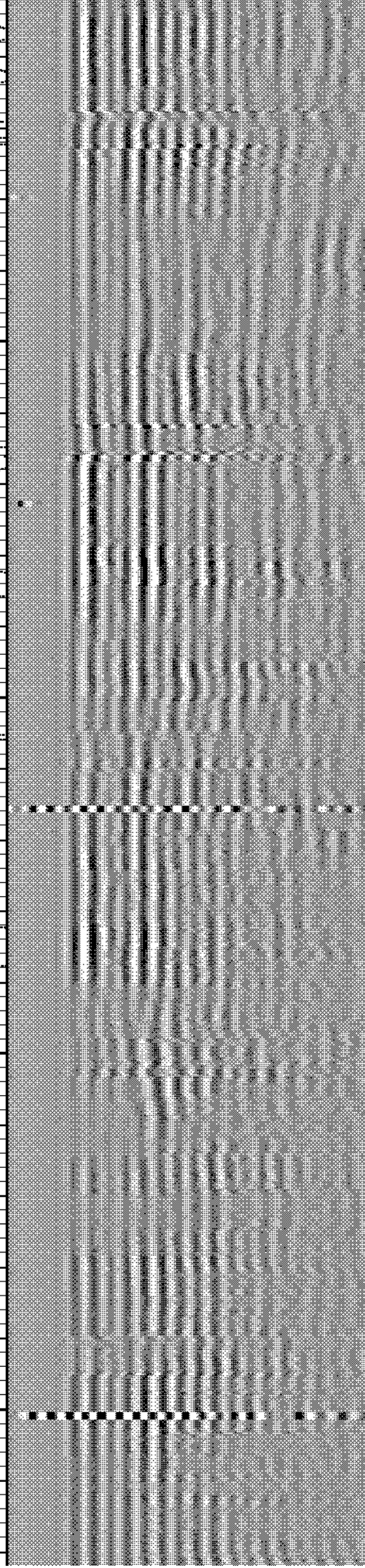
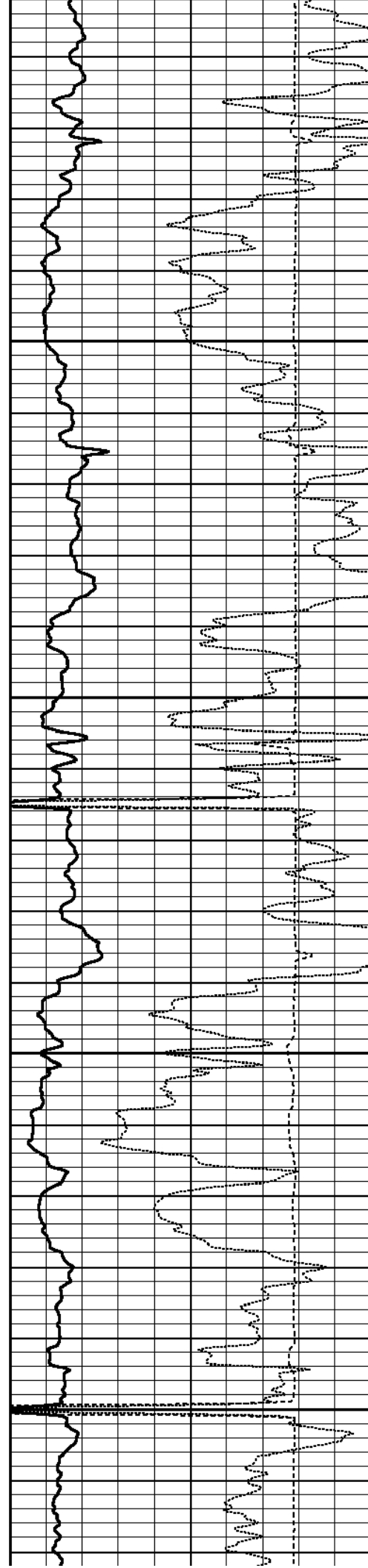




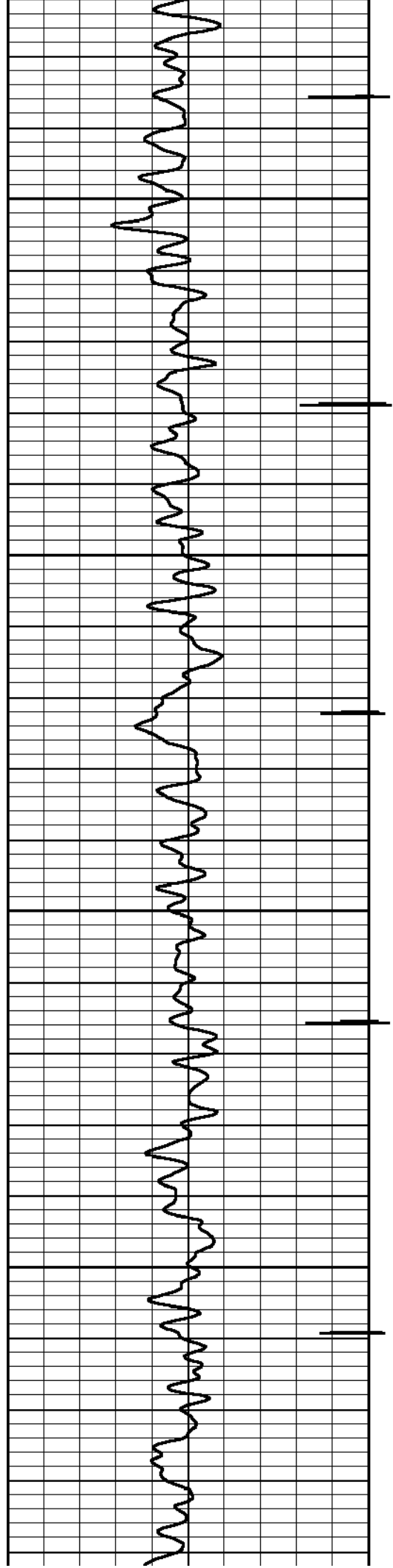


5300

5400

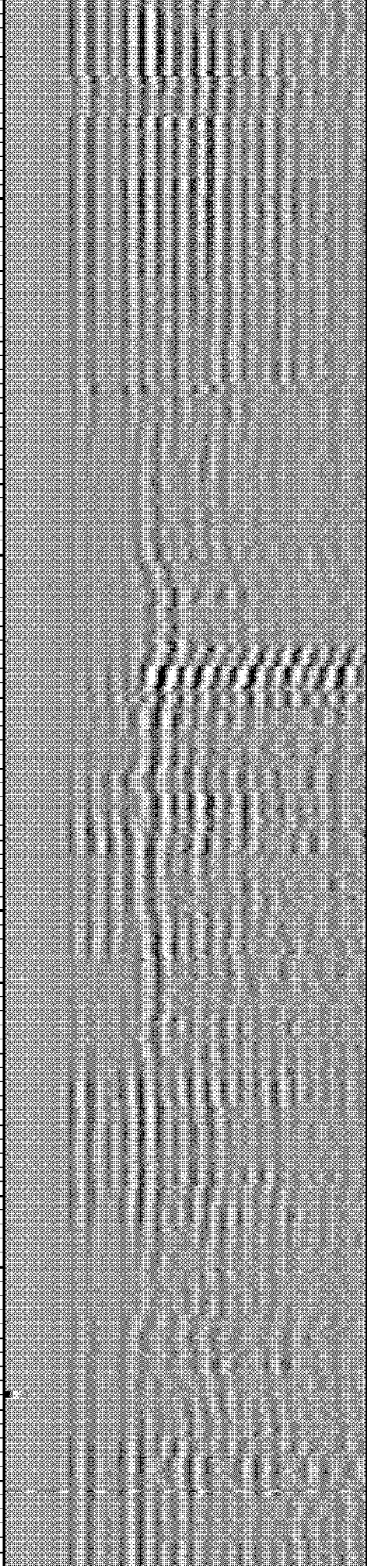
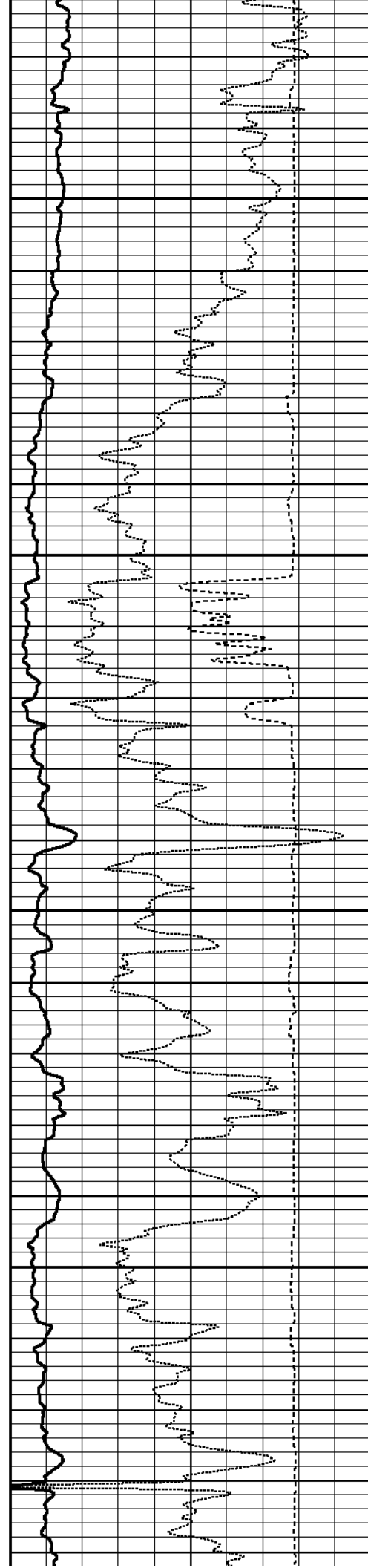


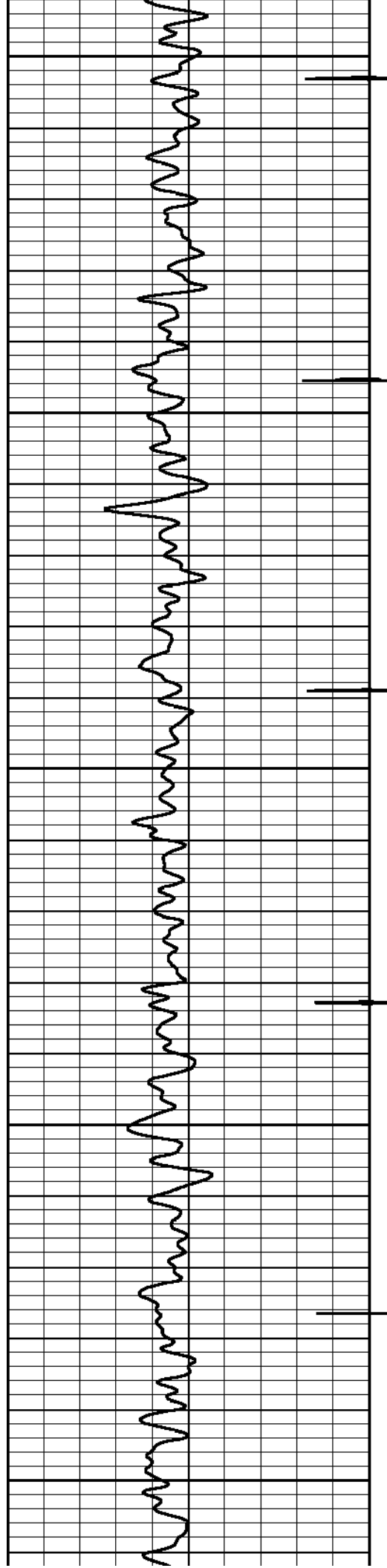




5500

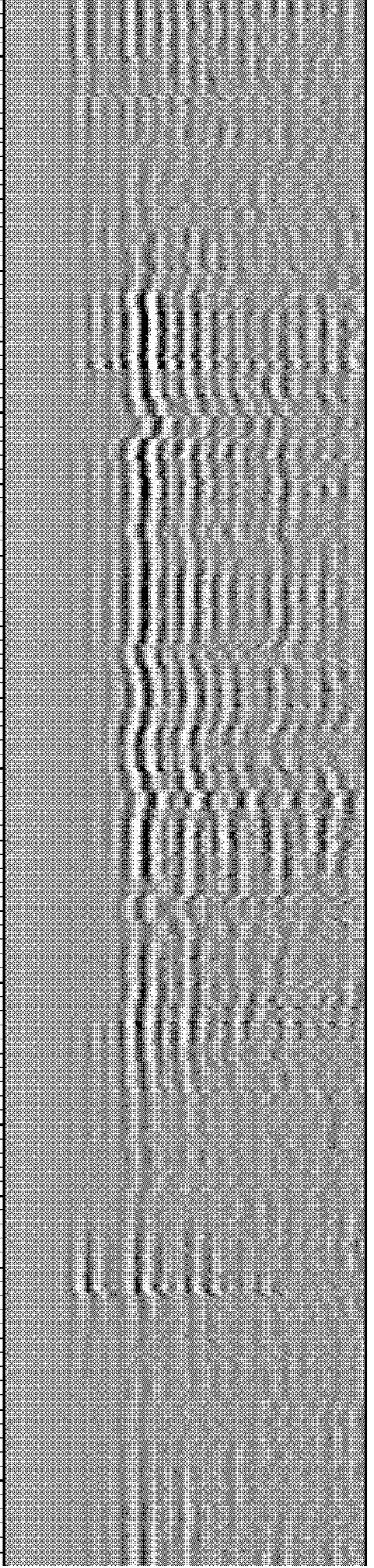
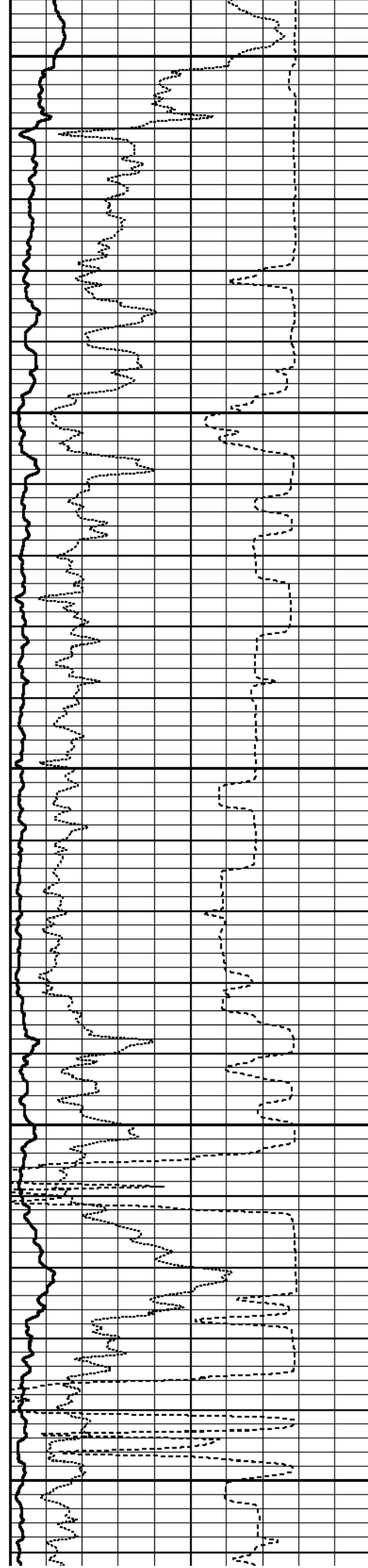
5600



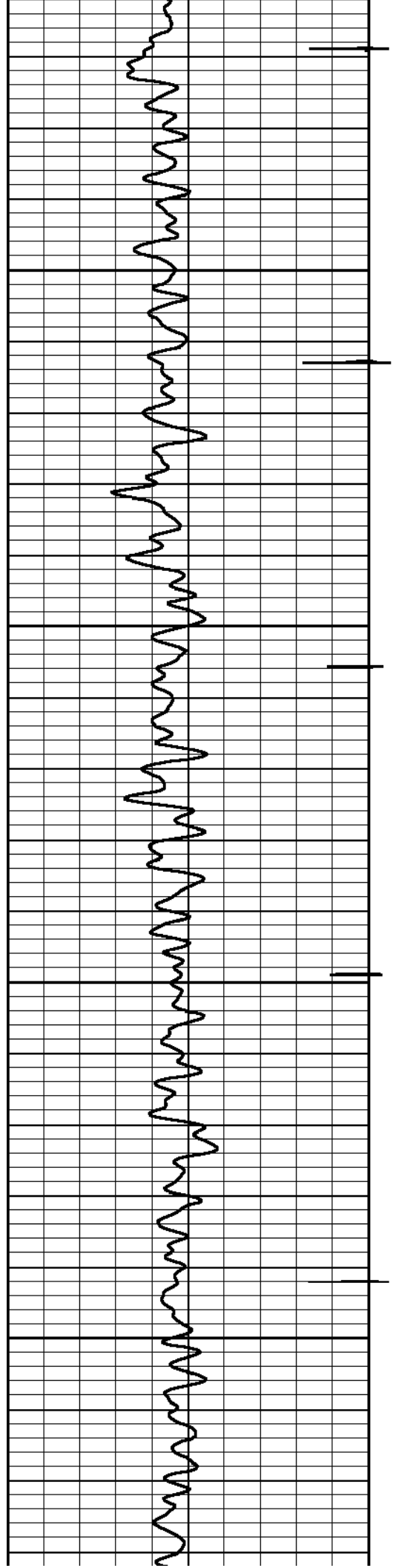


5700

5800

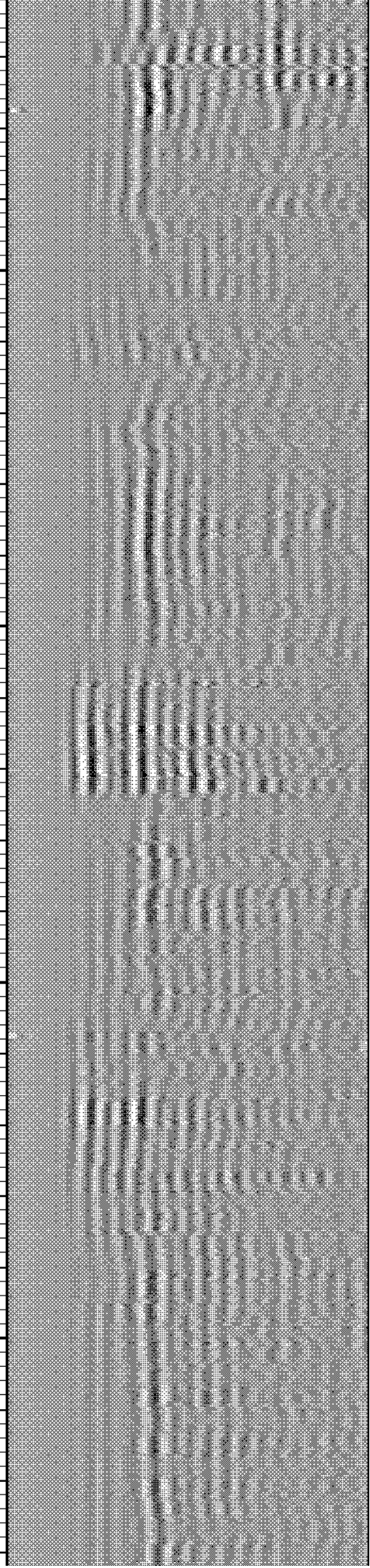
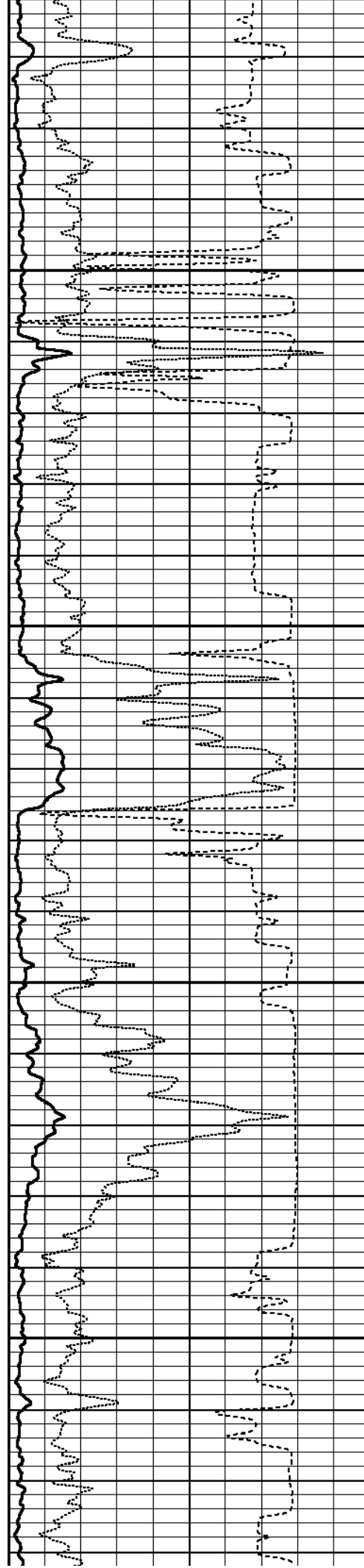


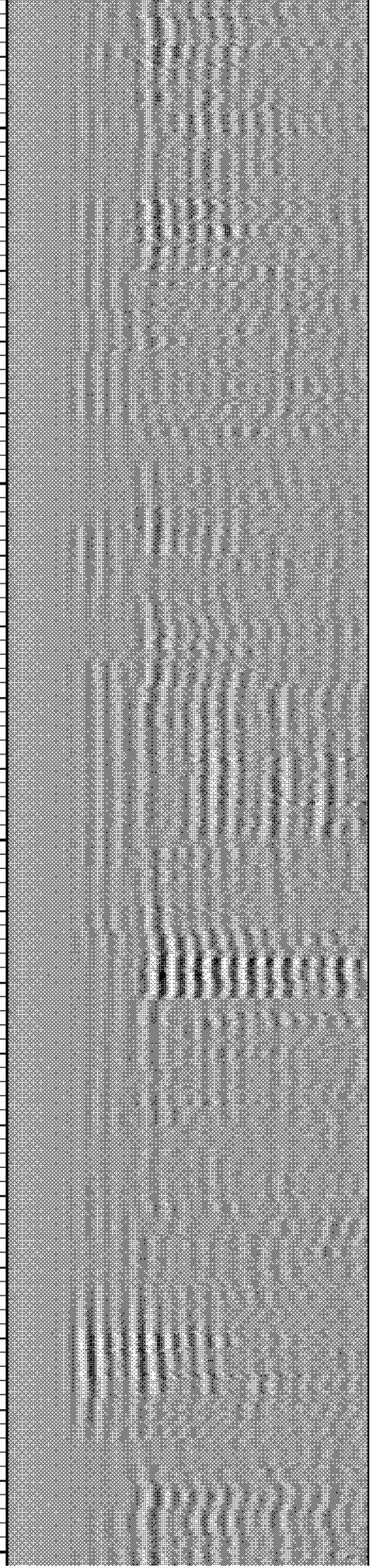
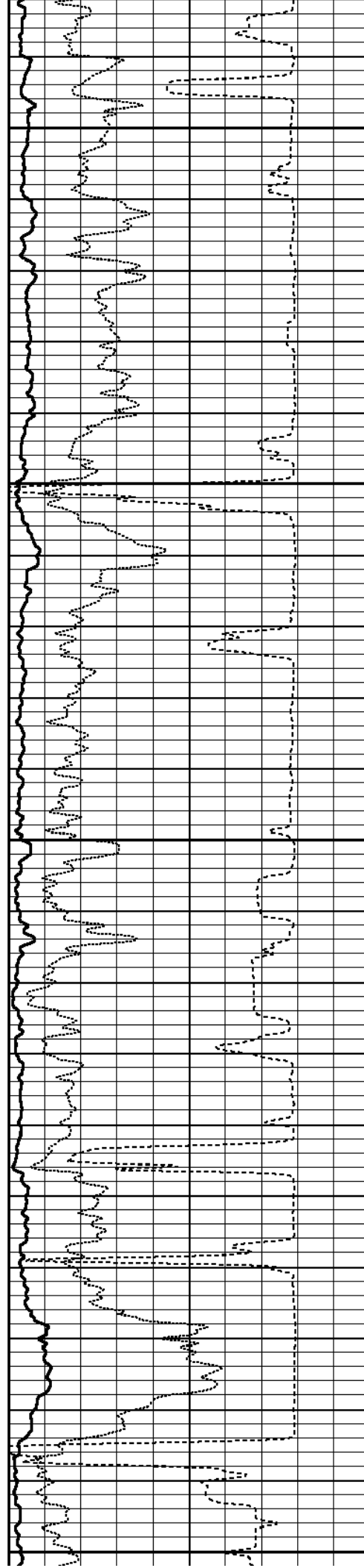
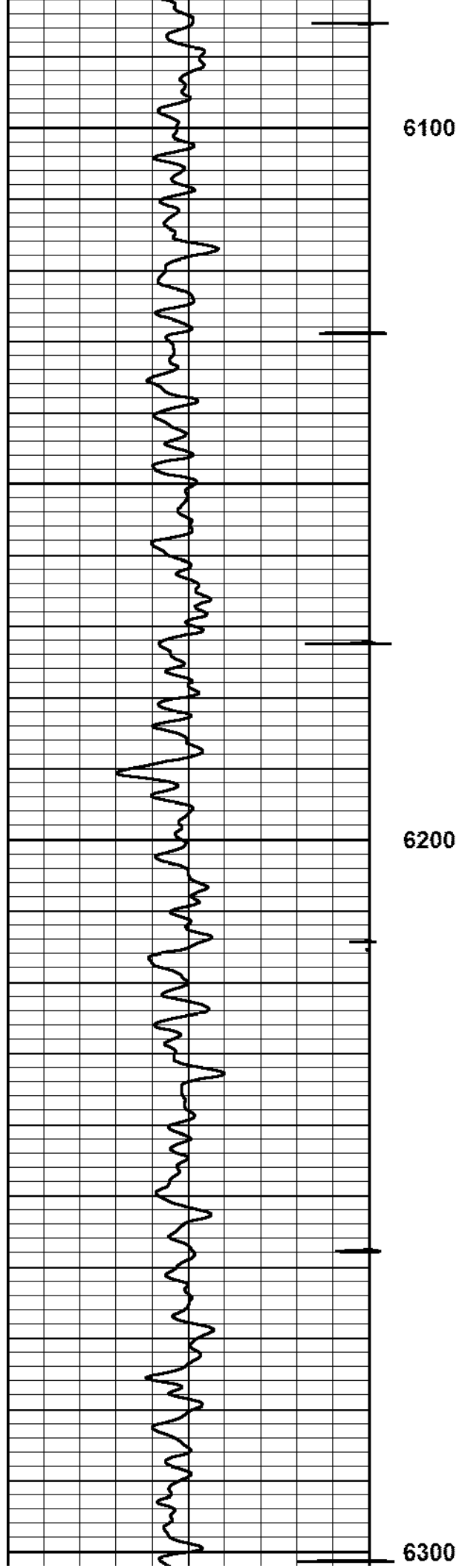


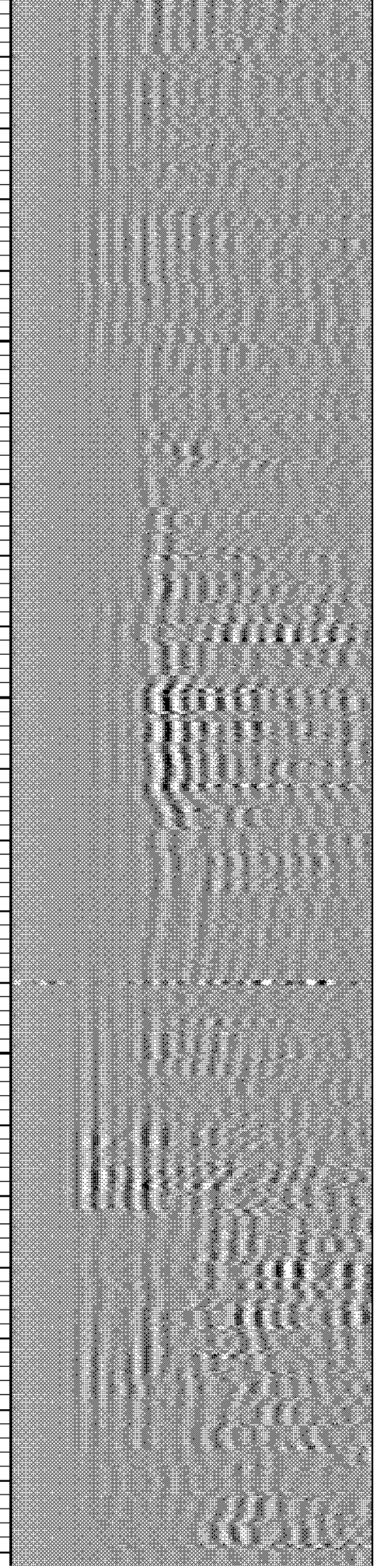
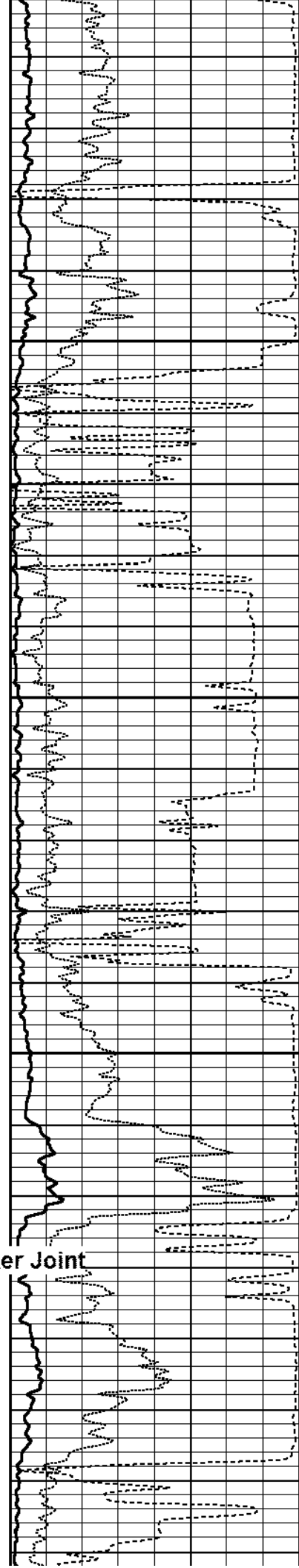
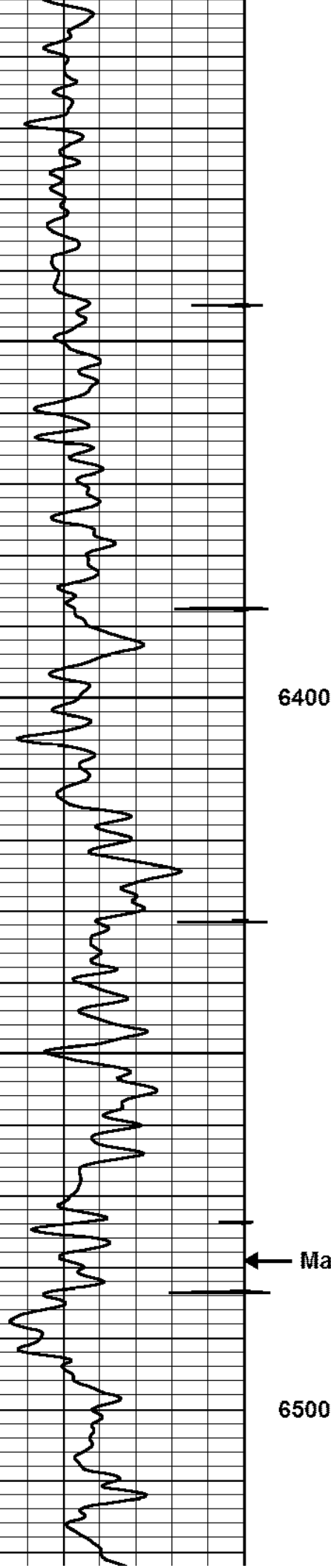


5900

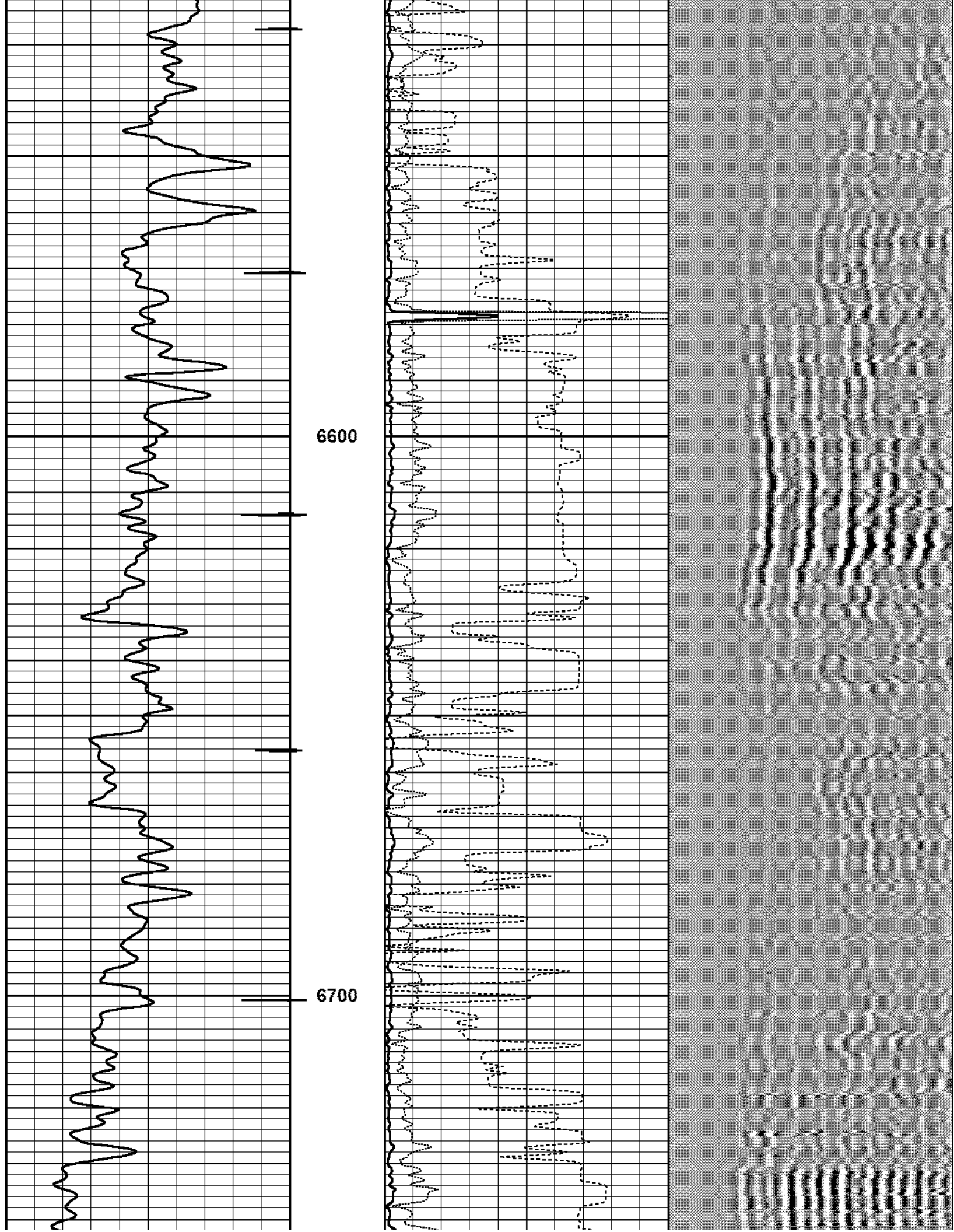
6000

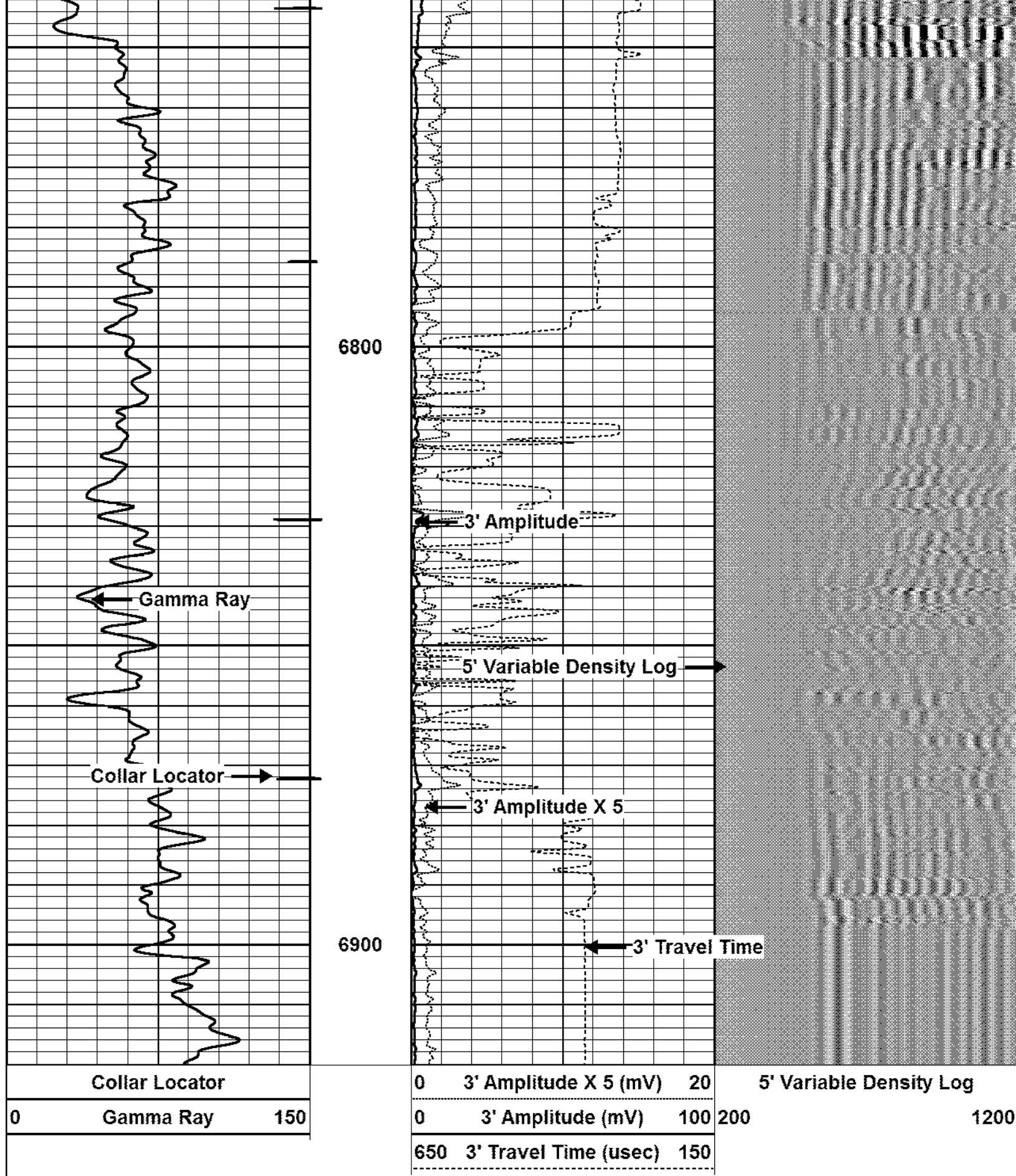












Company SUNDANCE ENERGY INC.  
 Well MLD 21-22  
 Field WATTENBERG



Providing Superior Value

County  
State

WELD  
COLORADO

Country US