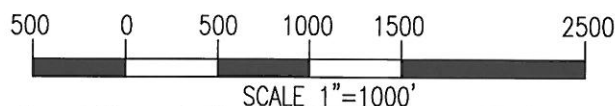


WELL: MEAGHER #14-1H TO BE LOCATED 1630' FNL AND 2700' FWL IN SECTION 14, TOWNSHIP 1 SOUTH, RANGE 104 WEST OF THE 6TH P.M. LOCATION FALLS IN: NATURAL GROUND GROUND ELEVATION = 6554' IMPROVEMENTS: NONE WITHIN 400' OF LOCATION

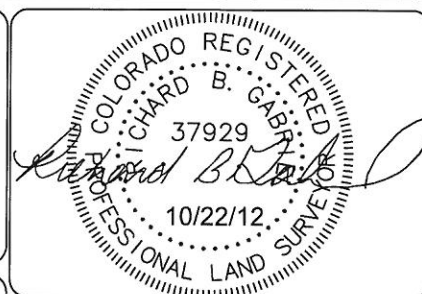
LEGEND:

- FOUND 2.5" BRASS B.L.M. MONUMENT
- ◆ PROPOSED WELL LOCATION
- ◇ PROPOSED BOTTOM HOLE LOCATION



NOTES:

1. THIS SURVEY WAS DONE BY GPS METHODS AND CONFORMS TO THE MINIMUM STANDARDS AS SET BY THE C.O.G.C.C. RULE NO. 215.
2. ELEVATIONS SHOWN AT THE WELL HEAD, AS WELL AS HORIZONTAL CONTROL, ARE BASED ON GPS-RTK VALUES DERIVED FROM DOING 2-HOUR STATIC GPS SESSIONS AND REDUCTIONS USING O.P.U.S. SOLUTIONS USING NGS POINT ET II JEK LOCATED IN SEC. 2, T1S, R104W 6TH P.M. N.A.V.D. 88 ELEV=6109'. VERTICAL = NAVD88 HORIZONTAL = NAD83/92
3. THE BEARINGS AS SHOWN HEREON ARE BASED ON GPS OBSERVATIONS BETWEEN THE MONUMENTS SHOWN HEREON AS FOUND IN THE FIELD DATE BELOW.
4. DISTANCES SHOWN ARE AT GROUND LEVEL, AS MEASURED IN THE FIELD, WITH TIES TO WELLS MEASURED AT A PERPENDICULAR TO SECTION LINES.



POWERTM
 Surveying Company, Inc.
 Established 1948

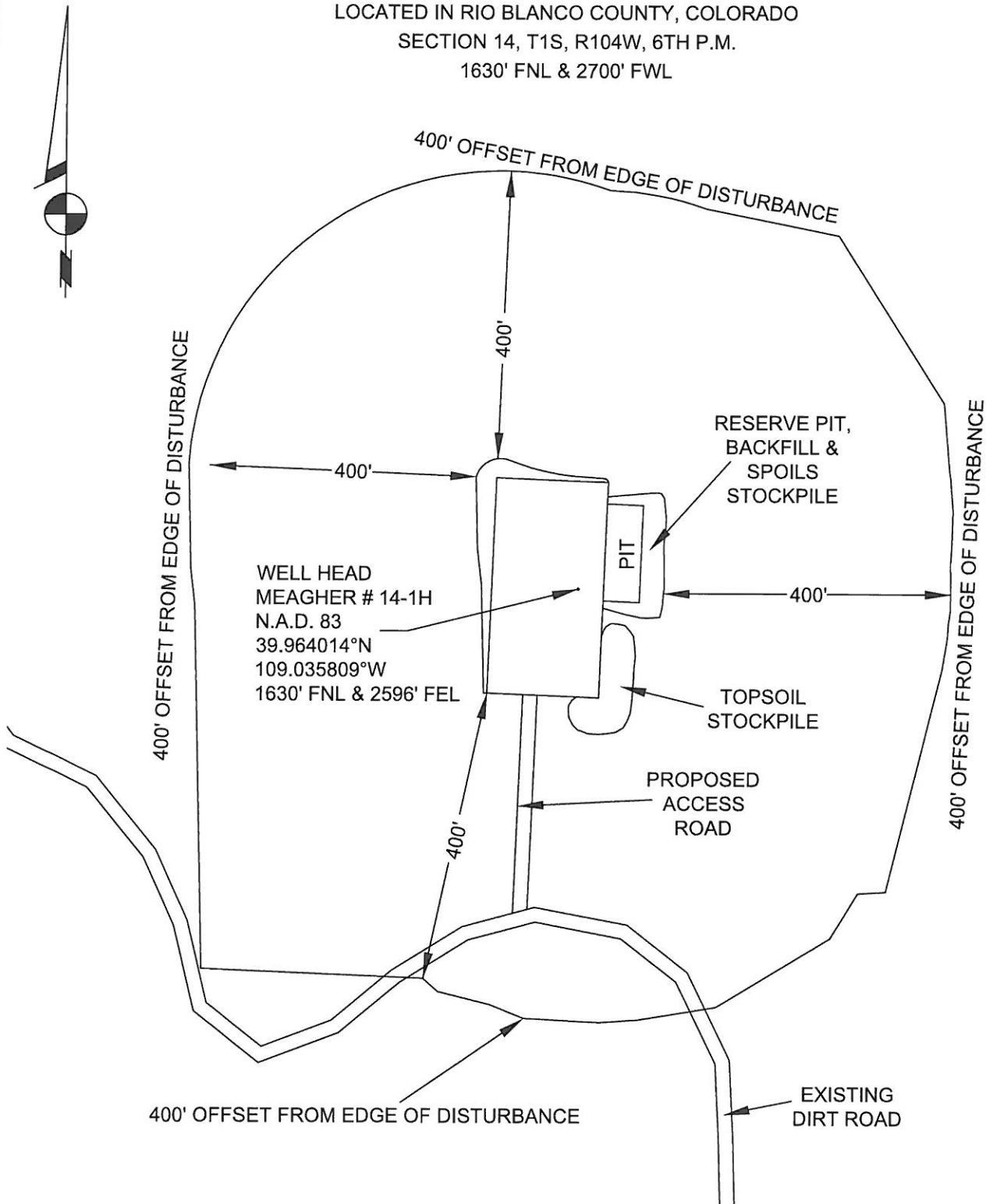
120 W. 84TH AVENUE PH. 303-702-1617
 THORNTON, COLORADO 80260 FAX. 303-702-1488
 WWW.POWERSURVEYING.COM

DATE OF FIELD WORK: 10/18/12
 DATE OF COMPLETION: 10/22/12
 PROJECT NUMBER: 501-12-209

P4

KGH OPERATING COMPANY

ADDENDUM TO LEGAL PLAT FOR
MEAGHER #14-1H
LOCATED IN RIO BLANCO COUNTY, COLORADO
SECTION 14, T1S, R104W, 6TH P.M.
1630' FNL & 2700' FWL



120 W. 84TH AVENUE
THORNTON, COLORADO 80260
PH. 303-702-1617
FAX. 303-702-1488
WWW.POWERSURVEYING.COM

ADDENDUM TO LEGAL PLAT

SURVEYED BY: C. VAN MATRE
DRAWN BY: D. YOSHIDA
APPROVED BY: R. GABRIEL

REVISED:

SCALE:
1" = 200'

DATE:
10/22/12

P5