

Northern Region Drilling

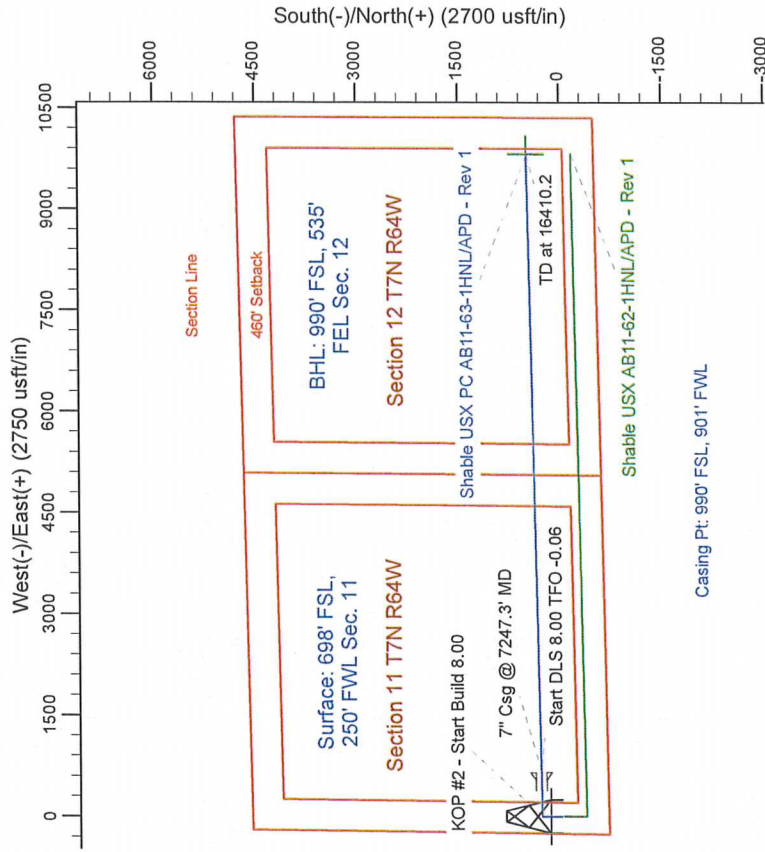
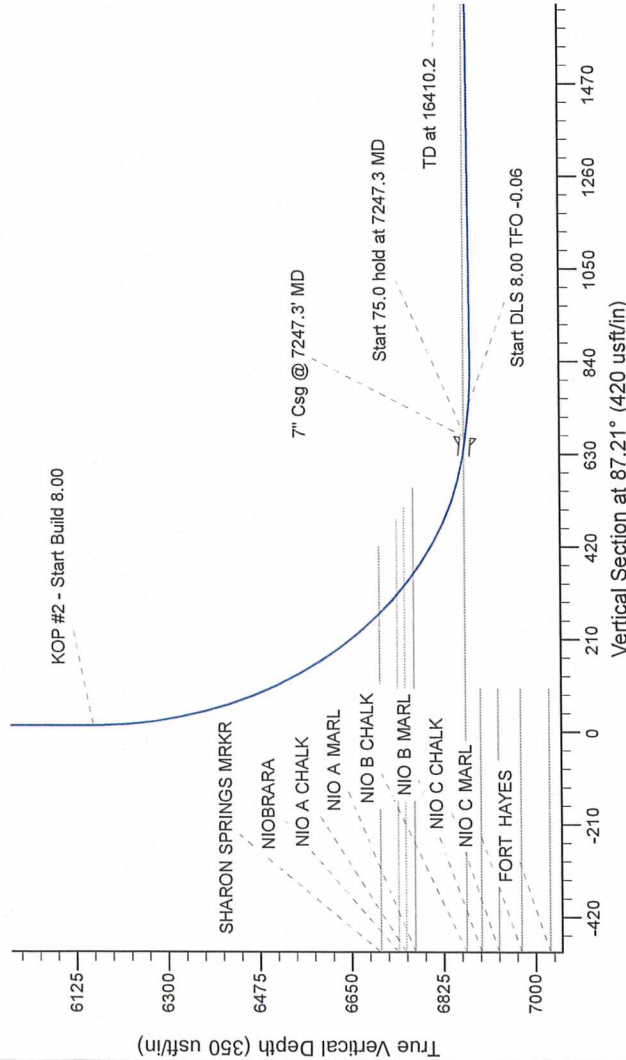
Project: Wattenberg Field
Site: AB (Sec.11-T07N-R64W) Weld County, CO
Well: Shable USX PC AB11-63-1HNL
Wellbore: Original Drilling
Design: APD - Rev 1

Geodetic System: US State Plane 1983
Datum: North American Datum 1983
Ellipsoid: GRS 1980
Zone: Colorado Northern Zone
System Datum: Mean Sea Level

SECTION DETAILS

Sec	MD	Inc	Azi	TVD	+N/S	+E/W	Dleg	TFace	VSet	Target
1	0.0	0.00	0.00	0.0	0.0	0.0	0.00	0.00	0.0	
2	2000.0	0.00	0.00	2000.0	0.0	0.0	0.00	0.00	0.0	
3	2480.3	12.01	0.00	2476.8	50.1	0.0	0.00	0.00	2.4	
4	3401.9	12.01	0.00	3378.2	241.9	0.0	0.00	0.00	11.6	
5	3882.2	0.00	0.00	3855.0	282.0	0.0	0.00	180.00	14.2	
6	6184.8	0.00	0.00	6157.6	282.0	0.0	0.00	2.50	657.2	
7	7247.3	85.00	88.92	6871.1	304.3	693.7	0.00	86.56	742.4	
8	7322.3	85.00	88.92	6877.9	305.7	735.8	0.00	8.00	806.8	
9	7398.6	90.40	86.91	6860.3	305.7	735.8	0.00	-0.06	806.8	
10	16410.2	90.40	86.91	6817.4	477.9	9814.3	0.00	0.00	9825.9	

Shable USX PC AB11-63-1HNL BHL 990'FSL, 535'FEL



T G M

Azimuths to Grid North
True North: -0.63°
Magnetic North: 7.89°

Magnetic Field
Strength: 53132.5snT
Dip Angle: 67.20°
Date: 10/25/2012
Model: IGRF200510

WELL DETAILS: Shable USX PC AB11-63-1HNL

Ground Level: 4818.0
Northing: 1456483.25
Easting: 3270758.91
Latitude: 40.582360
Longitude: -104.525190

Plan: APD - Rev 1 (Shable USX PC AB11-63-1HNL/Original Drilling)

Created By: Carrie Willers Date: 15:50, October 31 2012

Checked: Date: _____

Reviewed: Date: _____

Approved: Date: _____