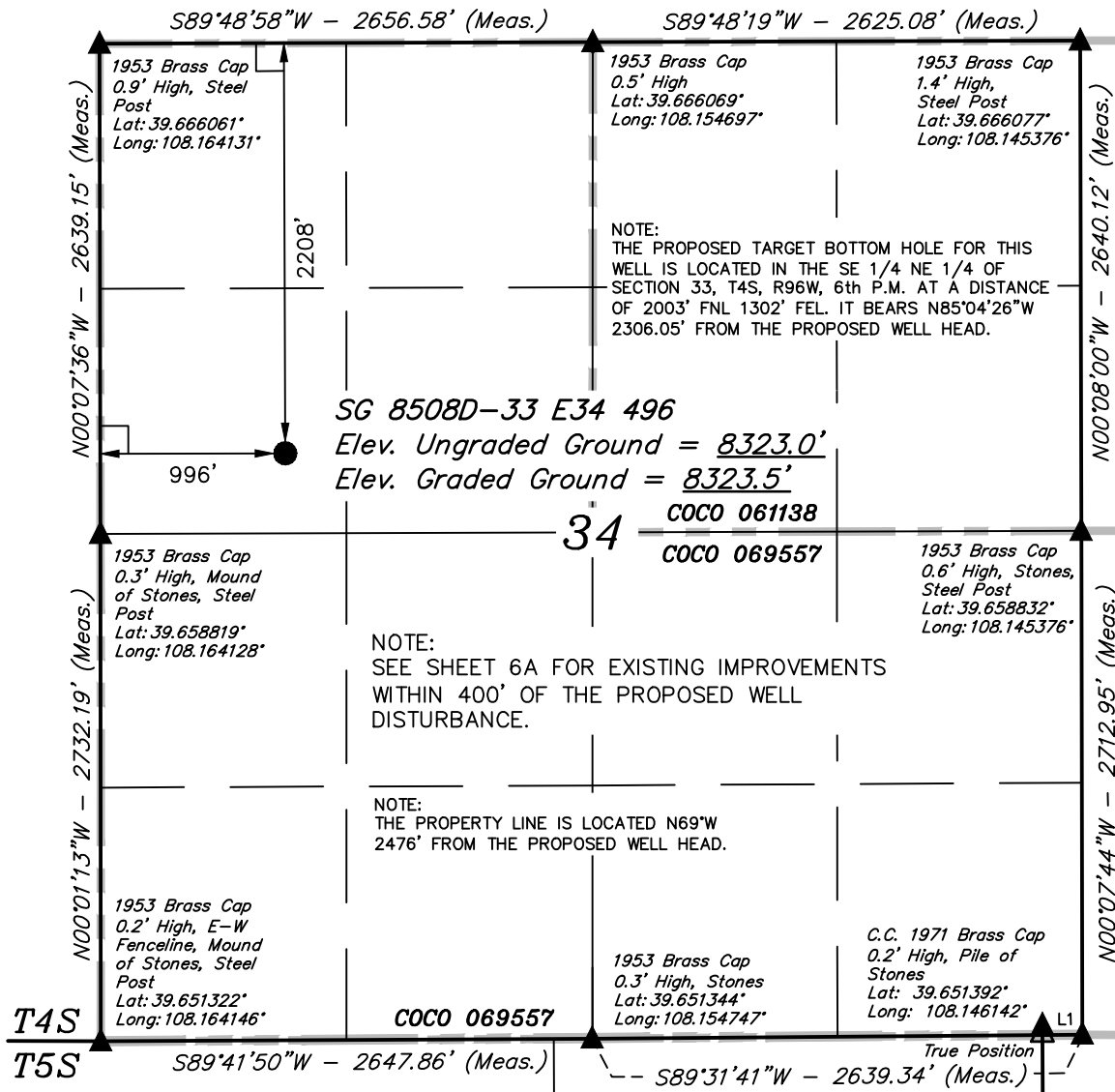


T4S, R96W, 6th P.M.



Sec. 3

LEGEND:

- └─ = 90° SYMBOL
- = PROPOSED WELL HEAD.
- ▲ = SECTION CORNERS LOCATED.
- △ = SECTION CORNERS RE-ESTABLISHED.
(Not Set on Ground.)

| | |
|--|--|
| PDOP = 1.4 | |
| NAD 83 (SURFACE LOCATION) | |
| LATITUDE = 39°39'36.02" (39.660006) | |
| LONGITUDE = 108°09'38.14" (108.160594) | |
| NAD 27 (SURFACE LOCATION) | |
| LATITUDE = 39°39'36.10" (39.660028) | |
| LONGITUDE = 108°09'35.85" (108.159958) | |

Encana OIL & GAS (USA) INC.

Well location, SG 8508D-33 E34 496 (SURFACE LOCATION), located as shown in the SW 1/4 NW 1/4 of Section 34, T4S, R96W, 6th P.M., Garfield County, Colorado.

BASIS OF ELEVATION

BENCH MARK (H79) LOCATED IN THE NE 1/4 OF SECTION 35, T4S, R98W, 6th P.M. TAKEN FROM THE BULL FORK QUADRANGLE, COLORADO, 7.5 MINUTE SERIES (TOPO GRAPHICAL MAP) PUBLISHED BY THE UNITED STATES DEPARTMENT OF THE INTERIOR, GEOLOGICAL SURVEY. SAID ELEVATION IS MARKED AS BEING 8535 FEET.

BASIS OF BEARINGS

BASIS OF BEARINGS IS A G.P.S. OBSERVATION.

| LINE TABLE | | |
|------------|-------------|---------|
| LINE | DIRECTION | LENGTH |
| L1 | N89°31'41"E | 215.17' |



Sheet 1a of 9



CERTIFICATE

THIS IS TO CERTIFY THAT THE ABOVE PLAT WAS PREPARED AND LOCATION AS SHOWN WAS STAKED ON THE GROUND FROM FIELD NOTES OF ACTUAL SURVEYS MADE BY ME OR UNDER MY SUPERVISION AND THAT THE SAME ARE TRUE AND CORRECT TO THE BEST OF MY KNOWLEDGE AND BELIEF.

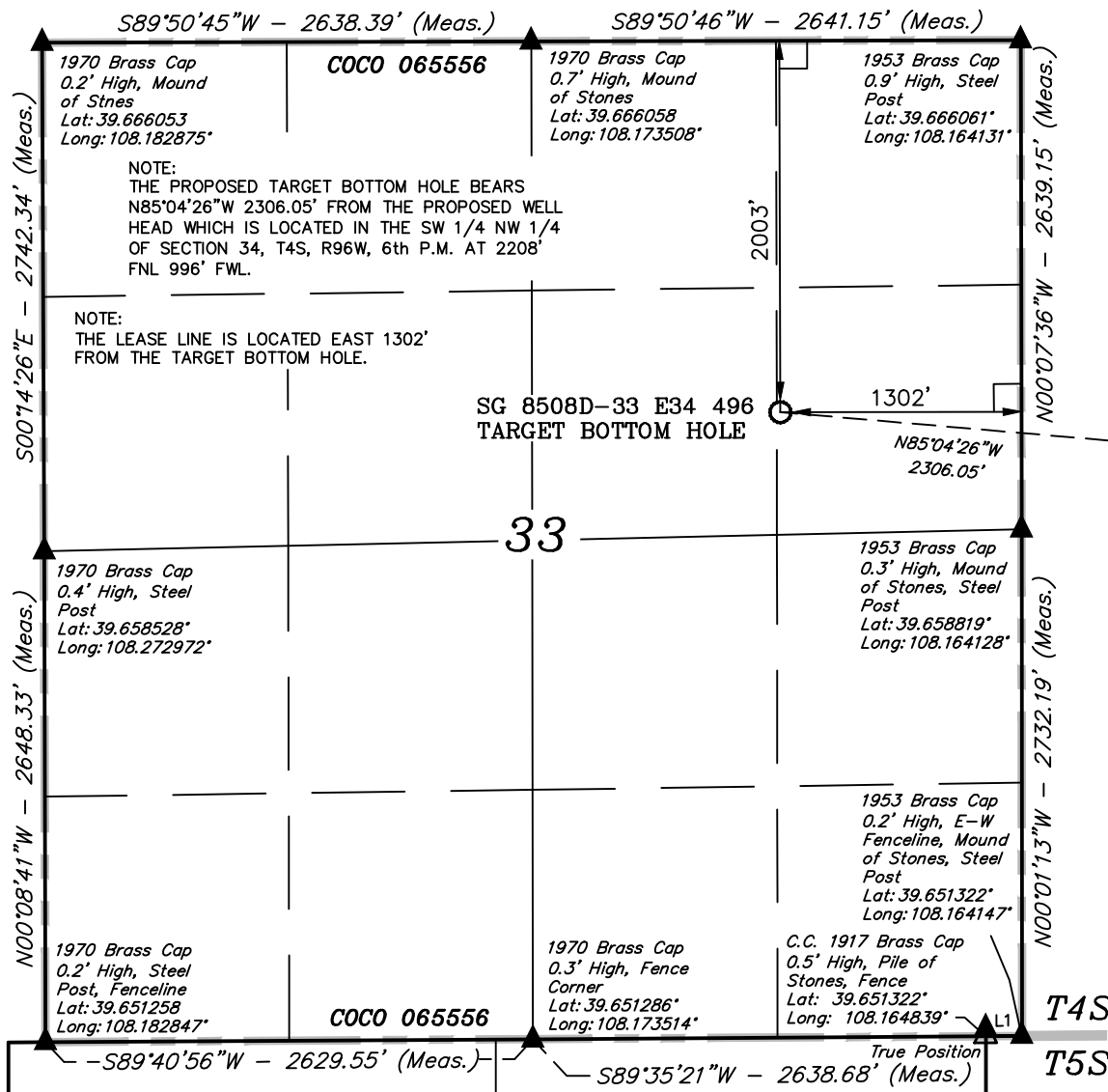
REGISTERED LAND SURVEYOR
REGISTRATION NO. 17492
STATE OF COLORADO

REVISED: 12-18-12 T.B.

UINTAH ENGINEERING & LAND SURVEYING
85 SOUTH 200 EAST - VERNAL, UTAH 84078
(435) 789-1017

| | | |
|-------------------------|-------------------------------------|-------------------------|
| SCALE 1" = 1000' | DATE SURVEYED: 06-01-12 | DATE DRAWN: 07-05-12 |
| PARTY B.B. C.C. T.B. | REFERENCES G.L.O. PLAT | |
| WEATHER COLD | FILE Encana OIL & GAS (USA) INC. | |

T4S, R96W, 6th P.M.



LEGEND:

- └─ = 90° SYMBOL
- = PROPOSED WELL HEAD.
- ▲ = SECTION CORNERS LOCATED.
- △ = SECTION CORNERS RE-ESTABLISHED.
(Not Set on Ground.)

| LINE TABLE | | |
|------------|-------------|---------|
| LINE | DIRECTION | LENGTH |
| L1 | S89°35'21"W | 195.03' |

| NAD 83 (TARGET BOTTOM HOLE) | |
|-----------------------------|------------------------------|
| LATITUDE | = 39°39'38.02" (39.660561) |
| LONGITUDE | = 108°10'07.50" (108.168750) |
| NAD 27 (TARGET BOTTOM HOLE) | |
| LATITUDE | = 39°39'38.11" (39.660586) |
| LONGITUDE | = 108°10'05.21" (108.168114) |

Encana OIL & GAS (USA) INC.

Well location, SG 8508D-33 E34 496 (TARGET BOTTOM HOLE), located as shown in the SE 1/4 NE 1/4 of Section 33, T4S, R96W, 6th P.M., Garfield County, Colorado.

BASIS OF ELEVATION

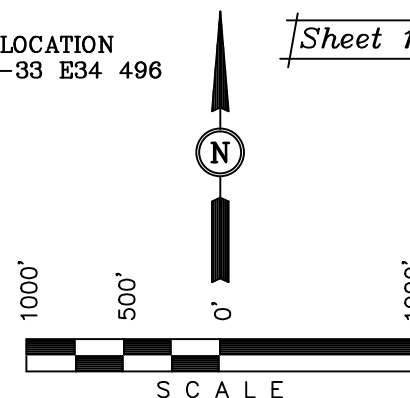
BENCH MARK (H79) LOCATED IN THE NE 1/4 OF SECTION 35, T4S, R98W, 6th P.M. TAKEN FROM THE BULL FORK QUADRANGLE, COLORADO, 7.5 MINUTE SERIES (TOPO GRAPHICAL MAP) PUBLISHED BY THE UNITED STATES DEPARTMENT OF THE INTERIOR, GEOLOGICAL SURVEY. SAID ELEVATION IS MARKED AS BEING 8535 FEET.

BASIS OF BEARINGS

BASIS OF BEARINGS IS A G.P.S. OBSERVATION.

SURFACE LOCATION
SG 8508D-33 E34 496

Sheet 1b of 9



CERTIFICATE

THIS IS TO CERTIFY THAT THE ABOVE PLAT WAS PREPARED AND LOCATION AS SHOWN WAS STAKED ON THE GROUND FROM FIELD NOTES OF ACTUAL SURVEYS MADE BY ME OR UNDER MY SUPERVISION AND THAT THE SAME ARE TRUE AND CORRECT TO THE BEST OF MY KNOWLEDGE AND BELIEF.

REGISTERED LAND SURVEYOR
REGISTRATION NO. 17492
STATE OF COLORADO

REVISED: 12-18-12 T.B.

UINTAH ENGINEERING & LAND SURVEYING
85 SOUTH 200 EAST - VERNAL, UTAH 84078
(435) 789-1017

| | | |
|-------------------------|-------------------------------------|-------------------------|
| SCALE 1" = 1000' | DATE SURVEYED: 06-01-12 | DATE DRAWN: 07-05-12 |
| PARTY B.B. C.C. T.B. | REFERENCES G.L.O. PLAT | |
| WEATHER COLD | FILE Encana OIL & GAS (USA) INC. | |