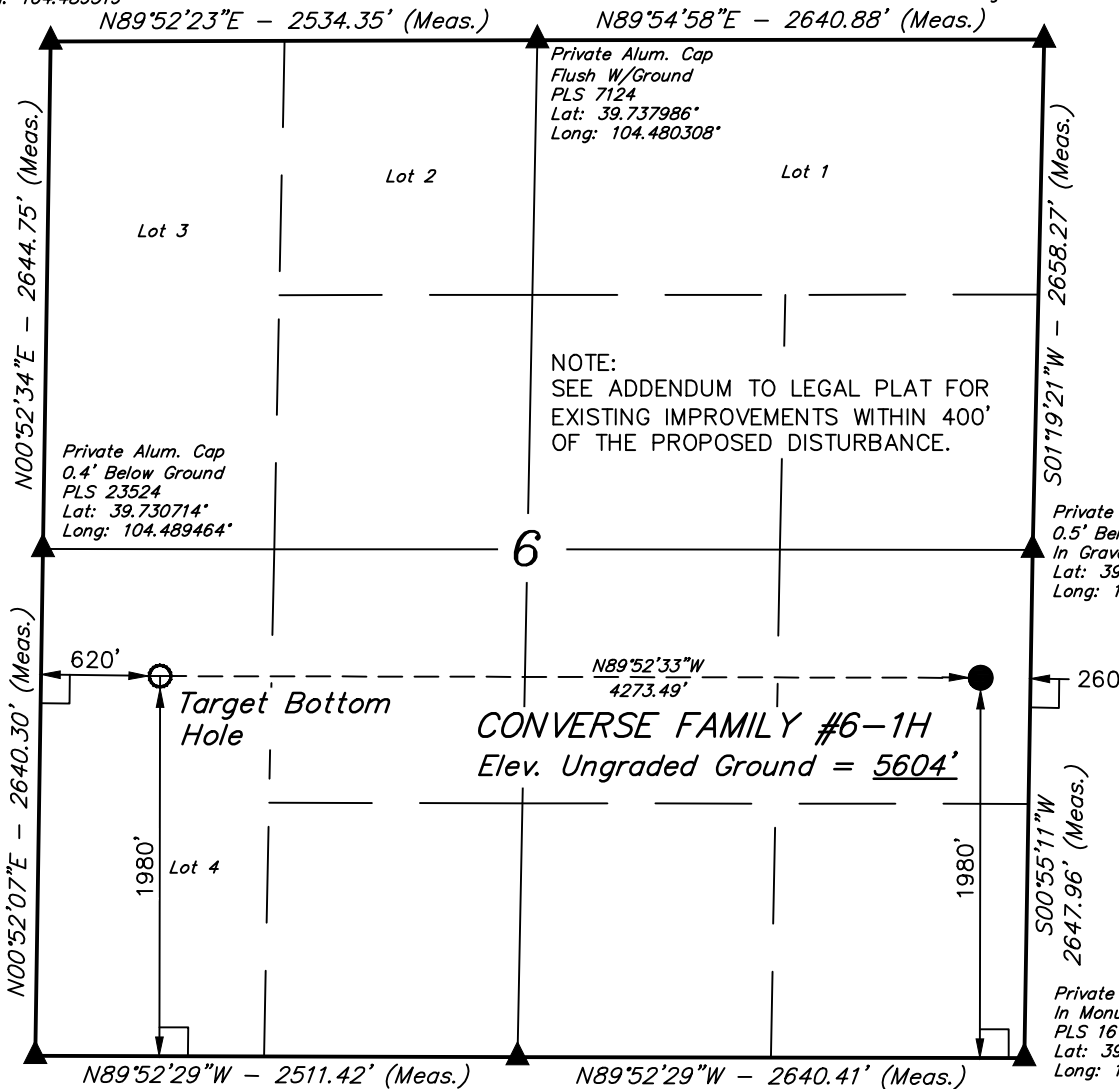


WELL LOCATION PLAT T4S, R63W, 6th P.M.

Private Alum. Cap
0.5' Above Ground
Lat: 39.737972°
Long: 104.489319°

Private Alum. Cap
In Monument Box
PLS 7124
Lat: 39.737994°
Long: 104.470922°



2003 Private Alum. Cap
0.5' Below Ground
Lat: 39.723469°
Long: 104.489608°

Private Alum. Cap
In Monument Box
PLS 27269
Lat: 39.723453°
Long: 104.480681°

ConocoPhillips Company

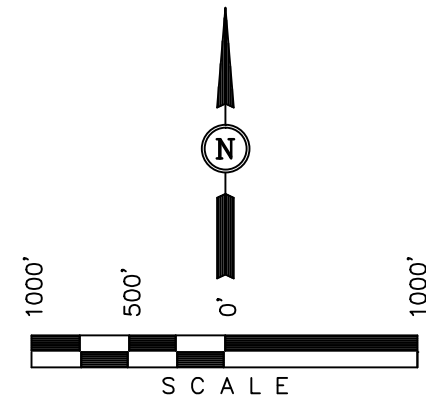
Well location, CONVERSE FAMILY #6-1H, located as shown in the NE 1/4 SE 1/4 of Section 6, T4S, R63W, 6th P.M., Arapahoe County, Colorado.

BASIS OF ELEVATION

BENCHMARK 374 LOCATED ON THE SECTION LINE BETWEEN SECTIONS 12 & 13, T5S, R64W, 6th. P.M., TAKEN FROM 1988 PUBLISHED DATUM BY THE UNITED STATES DEPARTMENT OF THE INTERIOR, GEOLOGICAL SURVEY AS BEING 6054.61 FEET.

BASIS OF BEARINGS

BASIS OF BEARINGS IS A G.P.S. OBSERVATION.



CERTIFICATE

THIS IS TO CERTIFY THAT THE ABOVE PLAT WAS PREPARED FROM FIELD NOTES OF ACTUAL SURVEYS MADE BY ME OR UNDER MY SUPERVISION AND THAT THE SAME ARE TRUE AND CORRECT TO THE BEST OF MY KNOWLEDGE AND BELIEF.

REGISTERED LAND SURVEYOR
REGISTRATION NO. 17492
STATE OF COLORADO

REV: 12-14-12 B.D.H.

UINTAH ENGINEERING & LAND SURVEYING
85 SOUTH 200 EAST - VERNAL, UTAH 84078
(435) 789-1017

LEGEND:

- └─┘ = 90° SYMBOL
- = PROPOSED WELL HEAD.
- ▲ = SECTION CORNERS LOCATED.

PDOP = 1.9

NAD 83 (TARGET BOTTOM HOLE)	NAD 83 (SURFACE LOCATION)
LATITUDE = 39°43'44.04" (39.728900)	LATITUDE = 39°43'43.93" (39.728869)
LONGITUDE = 104°29'14.26" (104.487294)	LONGITUDE = 104°28'19.58" (104.472106)
NAD 27 (TARGET BOTTOM HOLE)	NAD 27 (SURFACE LOCATION)
LATITUDE = 39°43'44.09" (39.728914)	LATITUDE = 39°43'43.98" (39.728883)
LONGITUDE = 104°29'12.40" (104.486778)	LONGITUDE = 104°28'17.72" (104.471589)

SCALE 1" = 1000'	DATE SURVEYED: 10-04-12	DATE DRAWN: 10-05-12
PARTY D.L.S. C.C. S.R.L.	REFERENCES G.L.O. PLAT	
WEATHER WARM	FILE CONOCOPHILLIPS COMPANY	

SECTION BREAKDOWN T4S, R63W, 6th P.M.

Private Alum. Cap
0.5' Above Ground
Lat: 39.737972°
Long: 104.489319°

Private Alum. Cap
In Monument Box
PLS 7124
Lat: 39.737994°
Long: 104.470922°

ConocoPhillips Company

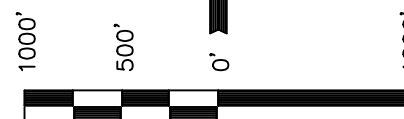
Well location, CONVERSE FAMILY #6-1H, located as shown in the NE 1/4 SE 1/4 of Section 6, T4S, R63W, 6th P.M., Arapahoe County, Colorado.

BASIS OF ELEVATION

BENCHMARK 374 LOCATED ON THE SECTION LINE BETWEEN SECTIONS 12 & 13, T5S, R64W, 6th. P.M., TAKEN FROM 1988 PUBLISHED DATUM BY THE UNITED STATES DEPARTMENT OF THE INTERIOR, GEOLOGICAL SURVEY AS BEING 6054.61 FEET.

BASIS OF BEARINGS

BASIS OF BEARINGS IS A G.P.S. OBSERVATION.



SCALE

CERTIFICATE

THIS IS TO CERTIFY THAT THE ABOVE PLAT WAS PREPARED FROM FIELD NOTES OF ACTUAL SURVEYS MADE BY ME OR UNDER MY SUPERVISION AND THAT THE SAME ARE TRUE AND CORRECT TO THE BEST OF MY KNOWLEDGE AND BELIEF.

REGISTERED LAND SURVEYOR
REGISTRATION NO. 17492
STATE OF COLORADO

REV: 12-14-12 B.D.H.

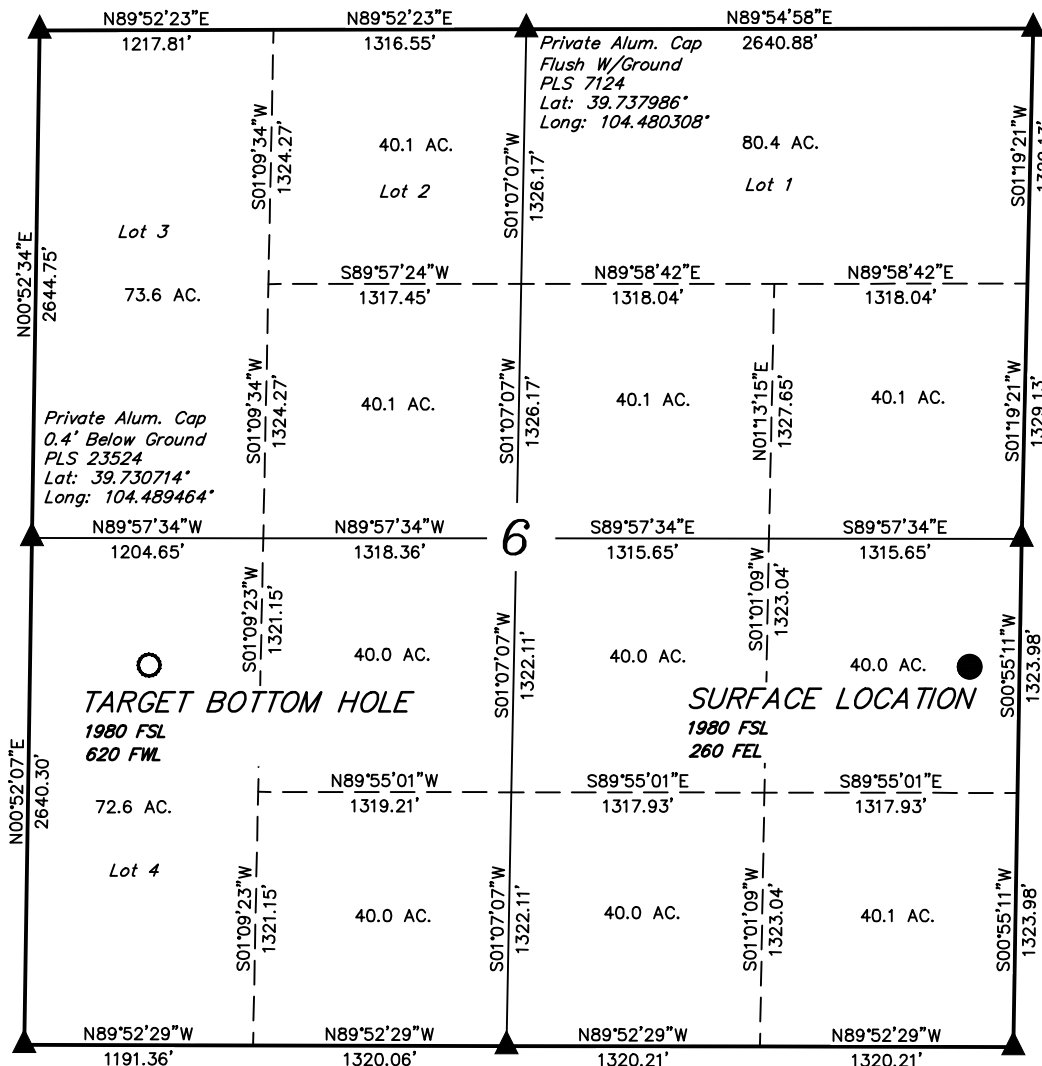
UINTAH ENGINEERING & LAND SURVEYING
85 SOUTH 200 EAST - VERNAL, UTAH 84078
(435) 789-1017

LEGEND:

- └─┘ = 90° SYMBOL
- = PROPOSED WELL HEAD.
- ▲ = SECTION CORNERS LOCATED.

NAD 83 (TARGET BOTTOM HOLE)	NAD 83 (SURFACE LOCATION)
LATITUDE = 39°43'44.04" (39.728900)	LATITUDE = 39°43'43.93" (39.728869)
LONGITUDE = 104°29'14.26" (104.487294)	LONGITUDE = 104°28'19.58" (104.472106)
NAD 27 (TARGET BOTTOM HOLE)	NAD 27 (SURFACE LOCATION)
LATITUDE = 39°43'44.09" (39.728914)	LATITUDE = 39°43'43.98" (39.728883)
LONGITUDE = 104°29'12.40" (104.486778)	LONGITUDE = 104°28'17.72" (104.471589)

SCALE 1" = 1000'	DATE SURVEYED: 10-04-12	DATE DRAWN: 10-05-12
PARTY D.L.S. C.C. S.R.L.	REFERENCES G.L.O. PLAT	
WEATHER WARM	FILE CONOCOPHILLIPS COMPANY	



2003 Private Alum. Cap
0.5' Below Ground
Lat: 39.723469°
Long: 104.489608°

Private Alum. Cap
In Monument Box
PLS 27269
Lat: 39.723453°
Long: 104.480681°

Private Alum. Cap
In Monument Box
PLS 16109
Lat: 39.723433°
Long: 104.471297°