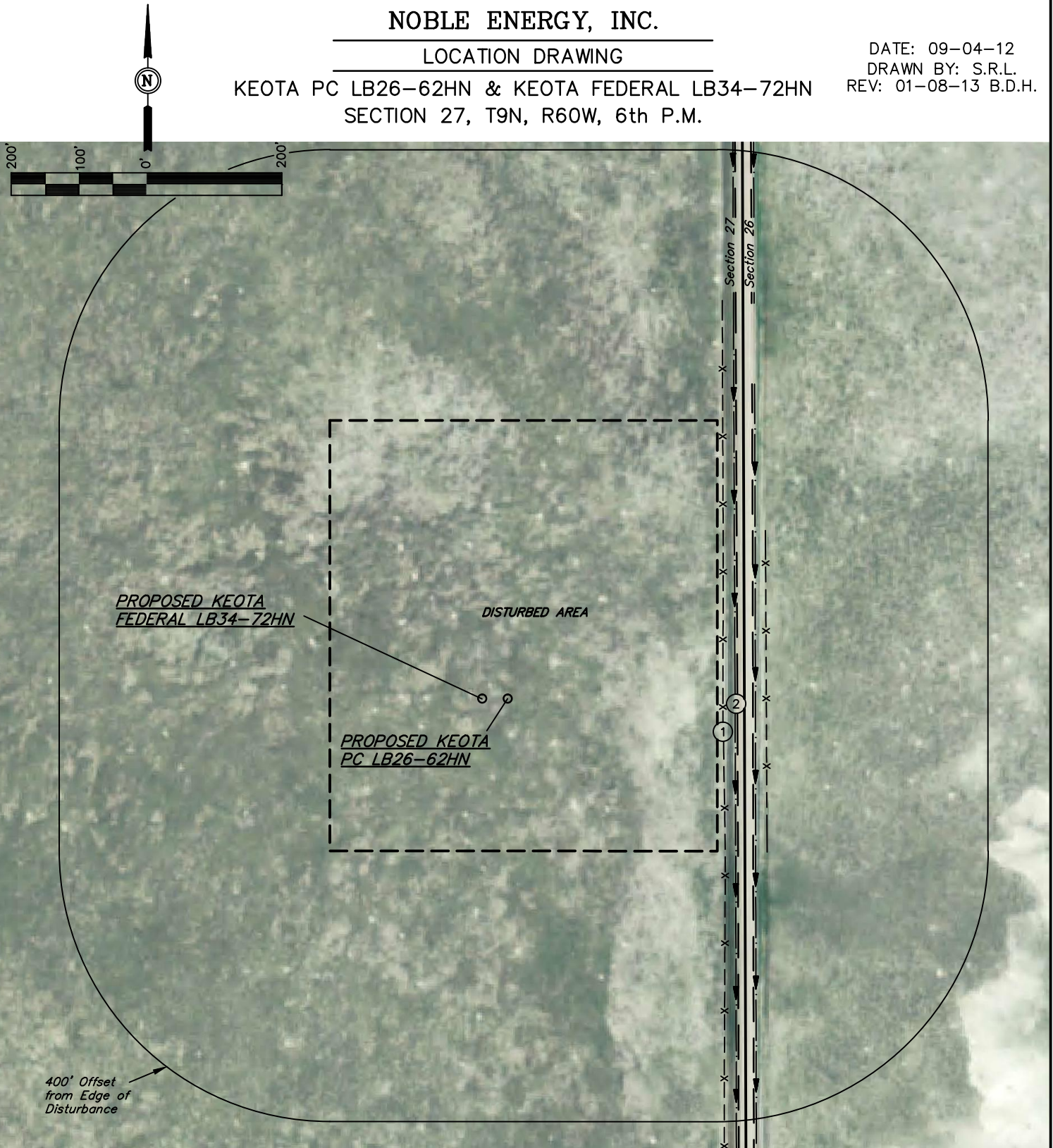


NOBLE ENERGY, INC.

LOCATION DRAWING

KEOTA PC LB26-62HN & KEOTA FEDERAL LB34-72HN
SECTION 27, T9N, R60W, 6th P.M.

DATE: 09-04-12
DRAWN BY: S.R.L.
REV: 01-08-13 B.D.H.



NOTE:
DIRECTION AND DISTANCE TO IMPROVEMENTS
AND NEAREST FEATURES ARE FROM PROPOSED
KEOTA PC LB26-62HN.

IMPROVEMENTS:

- ① FENCE 318' EAST, 383' EAST
- ② BAR DITCH 336' EAST, 367' EAST

PAD DETAILS:
WELL HEAD SPACING = 37.5'

NEAREST FEATURE: BUILDING 4650' SW, PUBLIC ROAD
340' EAST (CR 105), ABOVE GROUND UTILITY 1359' SE,
RAILROAD 5280' +, PROPERTY LINE 350' EAST

UINTAH ENGINEERING & LAND SURVEYING
85 So. 200 East * Vernal, Utah 84078 * (435) 789-1017