

KGH OPERATING COMPANY

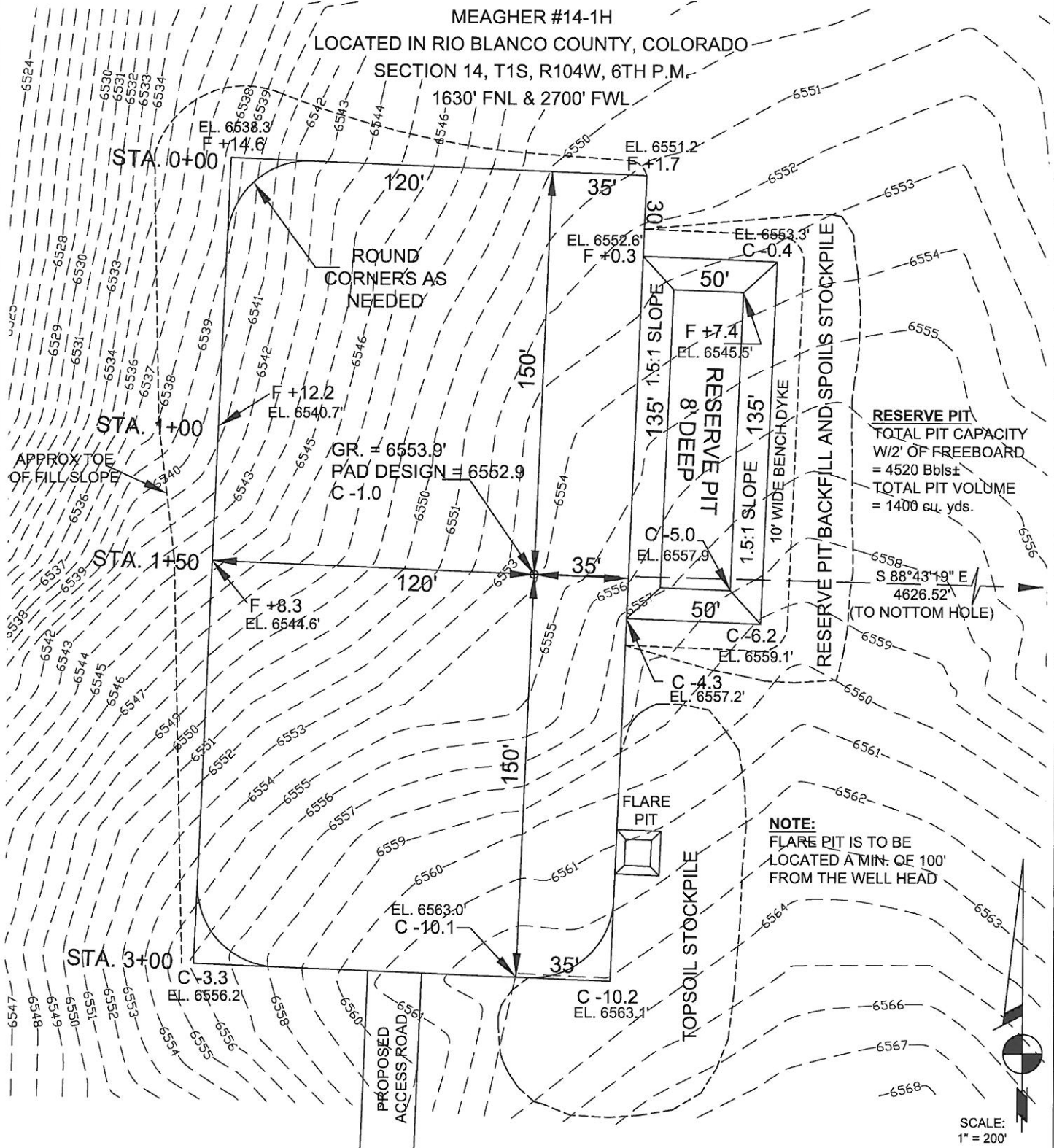
CONSTRUCTION LAYOUT FOR

MEAGHER #14-1H

LOCATED IN RIO BLANCO COUNTY, COLORADO

SECTION 14, T1S, R104W, 6TH P.M.

1630' FNL & 2700' FWL



120 W. 84TH AVENUE
 THORNTON, COLORADO 80260
 PH. 303-702-1617
 FAX. 303-702-1488
 WWW.POWERSURVEYING.COM

CONSTRUCTION LAYOUT

SURVEYED BY: C. VAN MATRE
 DRAWN BY: D. YOSHIDA
 APPROVED BY: R. GABRIEL

REVISED:

SCALE:
 1" = 200'

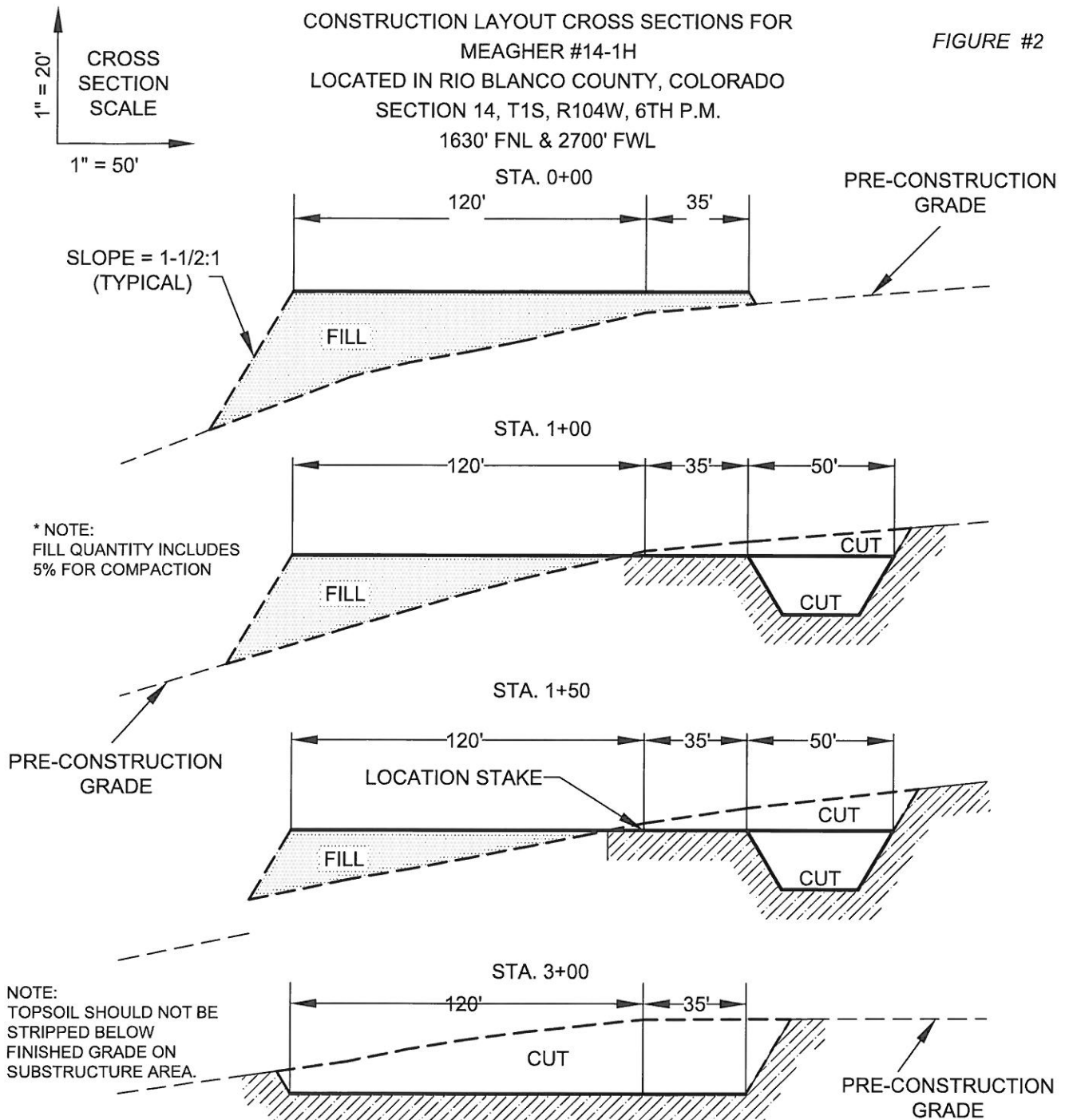
DATE:
 10/22/12

P6

KGH OPERATING COMPANY

CONSTRUCTION LAYOUT CROSS SECTIONS FOR
MEAGHER #14-1H
LOCATED IN RIO BLANCO COUNTY, COLORADO
SECTION 14, T1S, R104W, 6TH P.M.
1630' FNL & 2700' FWL

FIGURE #2



APPROXIMATE YARDAGES
(6") TOPSOIL STRIPPING = 1,360 CU. YDS.
REMAINING LOCATION = 4,761 CU. YDS.
TOTAL CUT = 6,121 CU. YDS
FILL = 4,606 CU. YDS

APPROXIMATE ACREAGES
WELL SITE DISTURBANCE = ± 1.7 ACRES
ACCESS ROAD DISTURBANCE = ± 0.135 ACRES
TOTAL = ± 1.835 ACRES

EXCESS MATERIAL = 1,515 CU. YDS.
TOPSOIL & PIT BACKFILL = 1,515 CU. YDS
(1/2 PIT VOL.)
EXCESS UNBALANCE = 0 CU. YDS
(AFTER INTERIM REHABILITATION)

POWERTM
Surveying Company, Inc.
Established 1948
120 W. 84TH AVENUE
THORNTON, COLORADO 80260
PH. 303-702-1617
FAX. 303-702-1488
WWW.POWERSURVEYING.COM

PAD CROSS SECTIONS

SURVEYED BY: C. VAN MATRE
DRAWN BY: D. YOSHIDA
APPROVED BY: R. GABRIEL

REVISED:

SCALE:
HORIZ = 1" = 50'
VERT = 1" = 20'

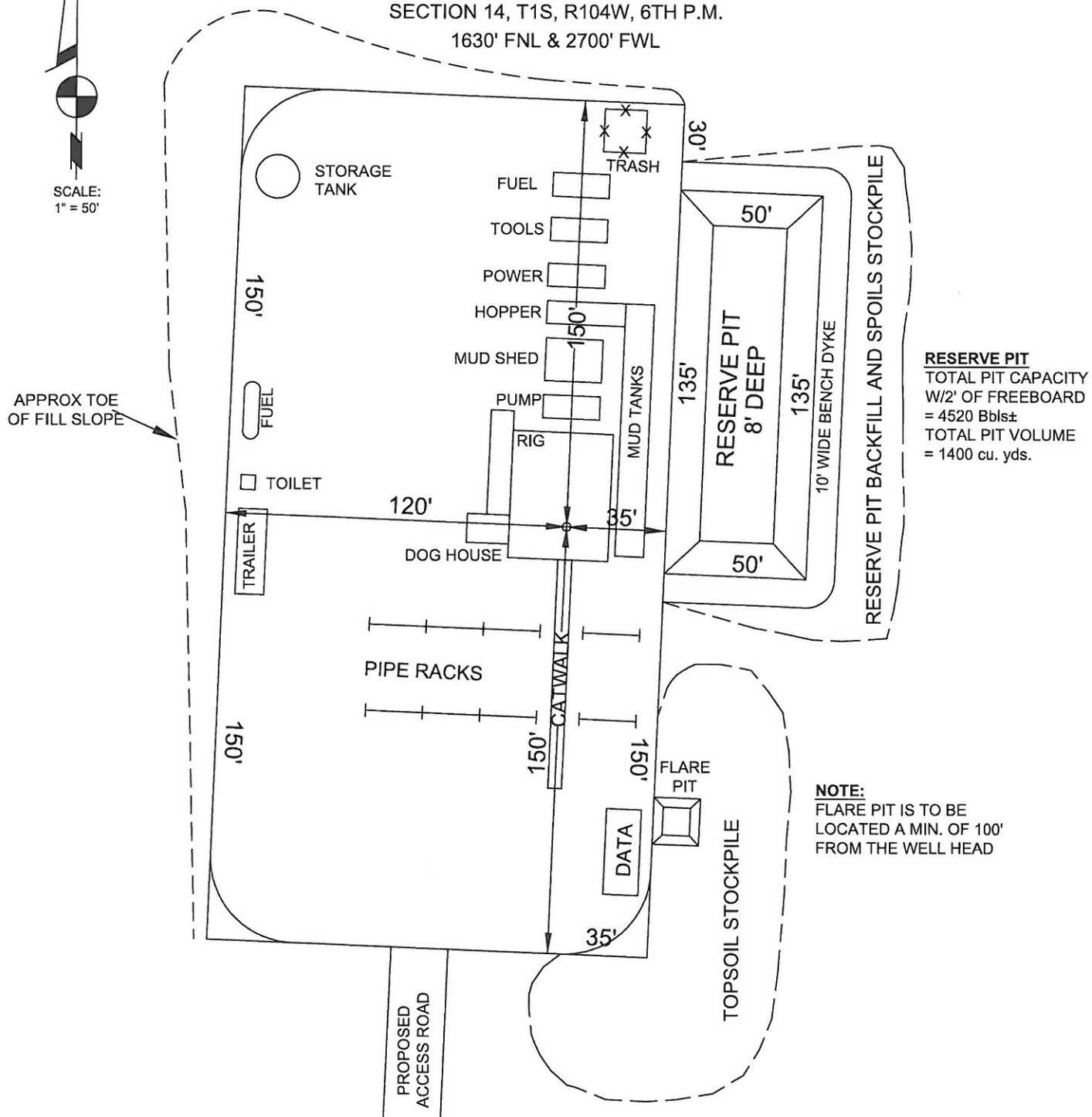
DATE:
10/22/12

P7

KGH OPERATING COMPANY

TYPICAL RIG LAYOUT FOR
MEAGHER #14-1H
LOCATED IN RIO BLANCO COUNTY, COLORADO
SECTION 14, T1S, R104W, 6TH P.M.
1630' FNL & 2700' FWL

FIGURE #3



120 W. 84TH AVENUE
THORNTON, COLORADO 80260
PH. 303-702-1617
FAX. 303-702-1488
WWW.POWERSURVEYING.COM

TYPICAL RIG LAYOUT

SURVEYED BY: C. VAN MATRE
DRAWN BY: D. YOSHIDA
APPROVED BY: R. GABRIEL

REVISED:

SCALE:
1" = 50'

DATE:
10/22/12

P8