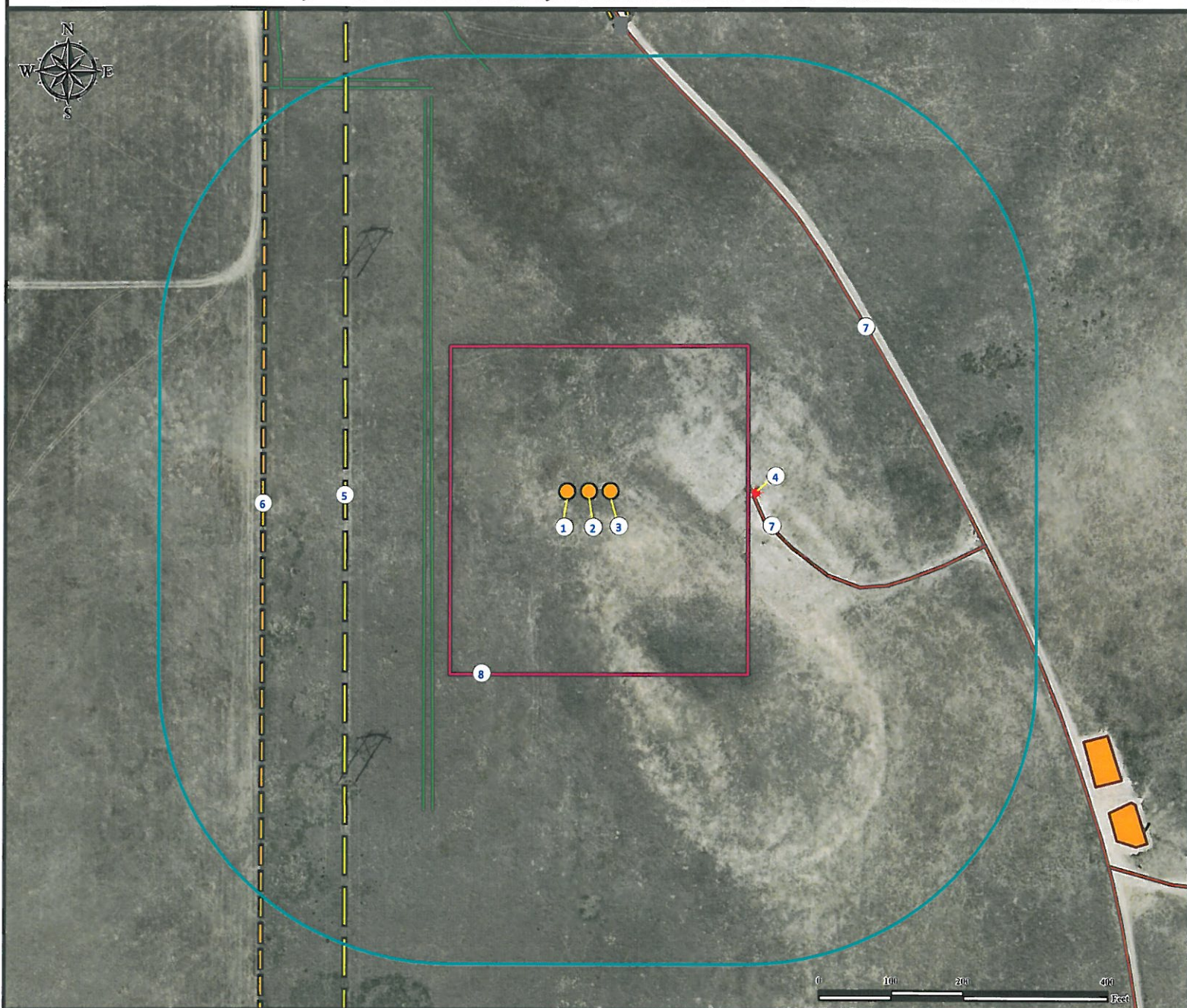


# Location Drawing TURKEY SPRINGS 3C-14HZ

## Horizontal Multi Well Pad

NW¼ NE¼ SECTION 23, TOWNSHIP 2 NORTH, RANGE 66 WEST OF THE 6TH PRINCIPAL MERIDIAN



1. Proposed well TURKEY SPRINGS 29N-14HZ
2. Proposed well TURKEY SPRINGS 3C-14HZ
3. Proposed well TURKEY SPRINGS 3N-14HZ
4. Existing well ARROWHEAD FARMS #31-23 is ±230' E.

5. Power Line is ±336' W.
6. Fence is ±450' W.
7. Private Roads are ±230' E and ±445' NE.
8. Operational Disturbance Area.

### Legend

- |               |                   |                      |       |
|---------------|-------------------|----------------------|-------|
| Proposed Well | Existing Facility | Power Line           | Fence |
| Existing Well | Disturbance Area  | Private Road         |       |
| Gate          | 400' Radius       | Underground Pipeline |       |

### Reference Location

\*\* All Measurements are Made from Reference Well TURKEY SPRINGS 3C-14HZ \*\*  
 Lat: 40.128904° Long: -104.742786° (NAD83)  
 Elevation: 5154 Feet

Surface Use: Rangeland



Use our resources to find yours!  
[www.petro-fs.com](http://www.petro-fs.com)  
 (303) 928-7128

Field Date: 07/20/2012  
 Drafting Date: 07/27/2012  
 Drafter: DMM  
 Revision: 1

Data Sources:  
 - Aerial courtesy of Anadarko Petroleum Corporation (2010)

Prepared for:   
 KERR-MCGEE OIL & GAS ONSHORE LP