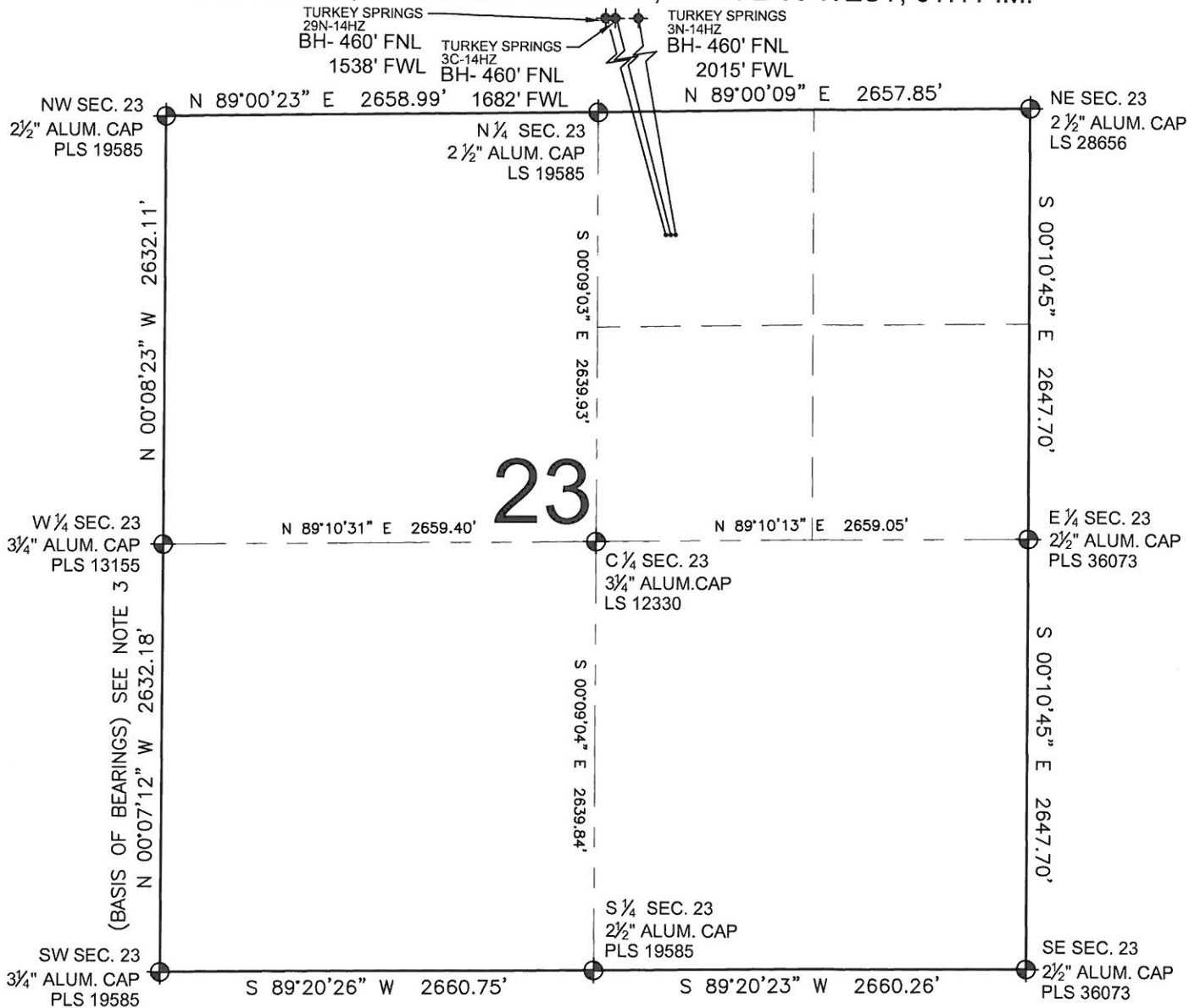


MULTI-WELL PLAN TURKEY SPRINGS 3C-14HZ

SECTION 23, TOWNSHIP 2 NORTH, RANGE 66 WEST, 6TH P.M.



NOTES:

1. THIS FIELD SURVEY CONFORMS TO THE MINIMUM STANDARDS SET BY THE C.O.G.C.C., RULE NO. 215
2. HORIZONTAL POSITIONS AND ORTHOMETRIC ELEVATIONS SHOWN AT THE WELL HEAD, ARE BASED ON GPS-RTK POSITIONS DERIVED FROM MINIMUM 2-HOUR STATIC OBSERVATIONS CORRECTED BY THE NATIONAL GEODETIC SURVEY ONLINE POSITIONING USER SERVICE, O.P.U.S. DATUM: HORIZONTAL = NAD83/2007, VERTICAL = NAVD88
3. THE BASIS OF BEARINGS ARE STATE PLANE COORDINATE SYSTEM GRID BEARINGS SHOWN HEREON BETWEEN THE DESCRIBED THE MONUMENTS SHOWN HEREON.
4. GRID DISTANCES ARE SHOWN, AS MEASURED IN THE FIELD, WITH TIES TO WELLS MEASURED PERPENDICULAR TO SECTION LINES.

LEGEND

- = EXISTING MONUMENT
 = BOTTOM HOLE
 = PROPOSED WELL
 = EXISTING WELL
 BH = BOTTOM HOLE

NOTES:

TURKEY SPRINGS 29N-14HZ TO BE AT 758' FNL, 2238' FEL.
 BOTTOM HOLE AT 460' FNL & 1538' FWL.
 TURKEY SPRINGS 3C-14HZ TO BE AT 758' FNL, 2208' FEL.
 BOTTOM HOLE AT 460' FNL & 1682' FWL.
 TURKEY SPRINGS 3N-14HZ TO BE AT 758' FNL, 2178' FEL.
 BOTTOM HOLE AT 460' FNL & 2015' FWL.

PREPARED BY:

PFS

Petroleum Field Services, LLC
1801 W. 13th Ave.
Denver, CO 80204



KERR-MCGEE OIL & GAS ONSHORE LP

FIELD DATE:
07-20-12

DRAWING DATE:
09-14-12

BY: SMF CHECKED: MLP

PAD NAME:
TURKEY SPRINGS 3 PAD

SURFACE LOCATION:
WELD COUNTY, COLORADO
NW 1/4 NE 1/4, SEC. 23, T2N, R66W, 6TH P.M.

