

Location:	COLORADO	Slot:	SLOT#27 REIGLE 4N-9HZ (496'FNL & 272'FWL, SEC.4)
Field:	WELD COUNTY (KERR MCGEE)	Well:	REIGLE 4N-9HZX
Facility:	SEC.04-T2N-R65W	Wellbore:	REIGLE 4N-9HZX PWB

Location:	COLORADO	Slot:	SLOT#27 REIGLE 4N-9HZ (496'FNL & 272'FWL, SEC.4)
Field:	WELD COUNTY (KERR MCGEE)	Well:	REIGLE 4N-9HZX
Facility:	SEC.04-T2N-R65W	Wellbore:	REIGLE 4N-9HZX PWB

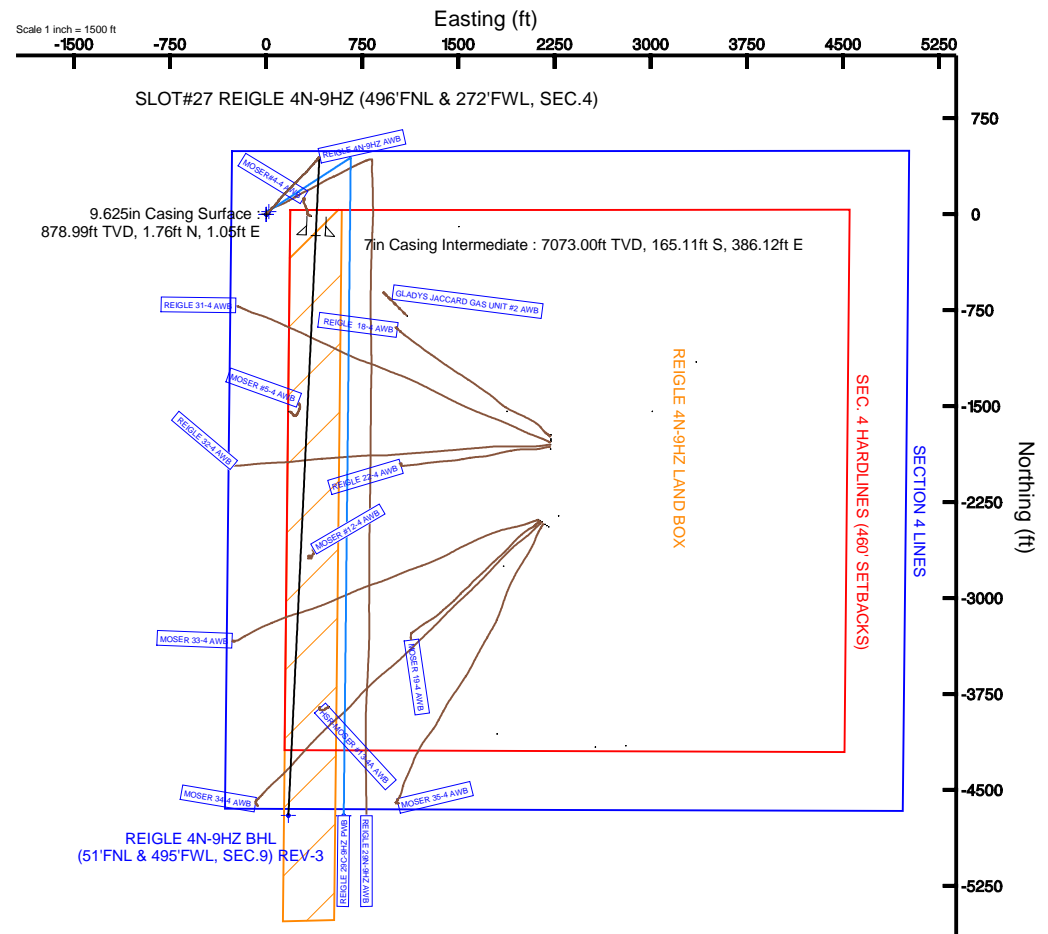
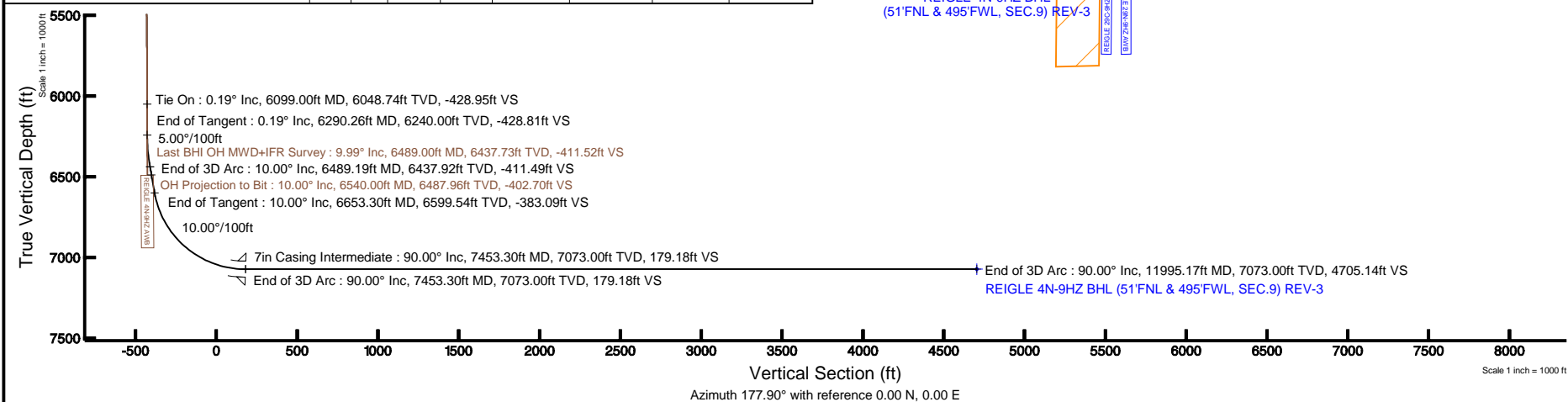
True vertical depths are referenced to XTREME 6 (RKB)	Grid System: NAD83 / Lambert Colorado SP, Northern Zone (501), US feet
Measured depths are referenced to XTREME 6 (RKB)	North Reference: True north
XTREME 6 (RKB) to Mean Sea Level: 4886 feet	Scale: True distance
Mean Sea Level to Mud line (At Slot: SLOT#27 REIGLE 4N-9HZ (496FNL & 272FNL, SEC.4)): 0 feet	Depths are in feet
Coordinates are in feet referenced to Slot	Created by: wilsje02 on 1/7/2013

Facility Name			Grid East (US ft)	Grid North (US ft)	Latitude	Longitude
SEC.04-T2N-R65W			3232187.417	1305339.416	40°10'06.838"N	104°40'08.933"W
Slot	Local N (ft)	Local E (ft)	Grid East (US ft)	Grid North (US ft)	Latitude	Longitude
SLOT#27 REIGLE 4N-9HZ (496FNL & 272FWL, SEC.4)	1724.24	-2223.06	3229948.401	1307042.675	40°10'23.876"N	104°40'37.517"W
XTREME 6 (RKB) to Mud line (At Slot: SLOT#27 REIGLE 4N-9HZ (496FNL & 272FWL, SEC.4))					4886ft	
Mean Sea Level to Mud line (At Slot: SLOT#27 REIGLE 4N-9HZ (496FNL & 272FWL, SEC.4))					0ft	
XTREME 6 (RKB) to Mean Sea Level					4886ft	

Start MD (ft)	End MD (ft)	Tool	Model	Log Name/Comment	Wellbore
17.00	836.00	Generic gyro - continuous	Generic gyro - continuous (Standard)		REIGLE 4N-9HZ AWB
836.00	6099.00	NavTrak	NavTrak (MAGCORR, IFR)		REIGLE 4N-9HZ AWB
6099.00	7453.30	NavTrak	NavTrak (MAGCORR, IFR)		REIGLE 4N-9HZX PWB
7453.30	11995.17	OnTrak	OnTrak (MAGCORR, IFR)		REIGLE 4N-9HZX PWB

Design Comment	MD (ft)	Inc (°)	Az (°)	TVD (ft)	Local N (ft)	Local E (ft)	DLS (°/100ft)	VS (ft)
Tie On	6099.00	0.190	255.920	6048.74	444.51	415.72	0.00	-428.95
End of Tangent	6290.26	0.190	255.920	6240.00	444.35	415.10	0.00	-428.81
End of 3D Arc	6489.19	10.000	182.692	6437.92	426.98	413.97	5.00	-411.49
End of Tangent	6653.30	10.000	182.692	6599.54	398.51	412.63	0.00	-383.09
End of 3D Arc	7453.30	90.000	182.693	7073.00	-165.12	386.12	10.00	179.18
End of 3D Arc	11995.17	90.000	182.693	7073.00	-4701.97	172.75	0.00	4705.14

Name	MD (ft)	TVD (ft)	Local N (ft)	Local E (ft)	Grid East (US ft)	Grid North (US ft)	Latitude	Longitude
SECTION 4 LINES		0.00	0.00	0.00	3229948.40	1307042.68	40°10'23.876"N	104°40'37.571"W
REIGLE 4N-9H2 B/L ON PLAT (51FNL & 545FNL, SEC.9) REV-1		7044.00	-4701.97	222.75	3230214.76	1302343.16	40°09'37.411"N	104°40'34.702"W
REIGLE 4N-9H2 B/L (51FNL & 495FNL, SEC.9) REV-3	11895.17	7073.00	-4701.97	172.75	323064.77	1302342.72	40°09'37.411"N	104°40'34.348"W
REIGLE 4N-9H2 B/L ON PLAT (51FNL & 545FNL, SEC.9) REV-2		7073.00	-4701.97	222.75	3230214.76	1302343.16	40°09'37.411"N	104°40'34.702"W
REIGLE 4N-9H2 LAND BOX		7073.00	0.00	0.00	3229948.40	1307042.68	40°10'23.876"N	104°40'37.571"W
SEC. 4 HARDLINES (469' SETBACKS)		7220.00	0.00	0.00	3229948.40	1307042.68	40°10'23.876"N	104°40'37.571"W





Planned Wellpath Report

REIGLE 4N-9HZX (REV-A.0) PWP

Page 1 of 5



REFERENCE WELLPATH IDENTIFICATION

Operator	KERR-MCGEE OIL & GAS ONSHORE LP	Slot	SLOT#27 REIGLE 4N-9HZ (496'FNL & 272'FWL, SEC.4)
Area	COLORADO	Well	REIGLE 4N-9HZX
Field	WELD COUNTY (KERR MCGEE)	Wellbore	REIGLE 4N-9HZX PWB
Facility	SEC.04-T2N-R65W		

REPORT SETUP INFORMATION

Projection System	NAD83 / Lambert Colorado SP, Northern Zone (501), US feet	Software System	WellArchitect® 3.0.2
North Reference	True	User	Wilsjef02
Scale	0.999958	Report Generated	1/7/2013 at 11:09:25
Convergence at slot	0.53° East	Database/Source file	WellArchitectDB/REIGLE_4N-9HZX_PWB.xml

WELLPATH LOCATION

	Local coordinates		Grid coordinates		Geographic coordinates	
	North[ft]	East[ft]	Easting[US ft]	Northing[US ft]	Latitude	Longitude
Slot Location	1724.24	-2223.06	3229948.40	1307042.68	40°10'23.876"N	104°40'37.571"W
Facility Reference Pt			3232187.42	1305339.42	40°10'06.838"N	104°40'08.933"W
Field Reference Pt			3197771.84	1268891.29	40°04'09.600"N	104°47'36.000"W

WELLPATH DATUM

Calculation method	Minimum curvature	XTREME 6 (RKB) to Facility Vertical Datum	4886.00ft
Horizontal Reference Pt	Slot	XTREME 6 (RKB) to Mean Sea Level	4886.00ft
Vertical Reference Pt	XTREME 6 (RKB)	XTREME 6 (RKB) to Mud Line at Slot (SLOT#27 REIGLE 4N-9HZ (496'FNL & 272'FWL, SEC.4))	4886.00ft
MD Reference Pt	XTREME 6 (RKB)	Section Origin	N 0.00, E 0.00 ft
Field Vertical Reference	Mean Sea Level	Section Azimuth	177.90°



Planned Wellpath Report

REIGLE 4N-9HZX (REV-A.0) PWP

Page 2 of 5



REFERENCE WELLPATH IDENTIFICATION			
Operator	KERR-MCGEE OIL & GAS ONSHORE LP	Slot	SLOT#27 REIGLE 4N-9HZ (496'FNL & 272'FWL, SEC.4)
Area	COLORADO	Well	REIGLE 4N-9HZX
Field	WELD COUNTY (KERR MCGEE)	Wellbore	REIGLE 4N-9HZX PWB
Facility	SEC.04-T2N-R65W		

WELLPATH DATA (66 stations) † = interpolated/extrapolated station										
MD [ft]	Inclination [°]	Azimuth [°]	TVD [ft]	Vert Sect [ft]	North [ft]	East [ft]	Latitude	Longitude	DLS [°/100ft]	Comments
6099.00	0.190	255.920	6048.74	-428.95	444.51	415.72	40°10'28.269"N	104°40'32.216"W	0.00	Tie On
6199.00†	0.190	255.920	6148.74	-428.88	444.43	415.39	40°10'28.268"N	104°40'32.220"W	0.00	
6290.26	0.190	255.920	6240.00	-428.81	444.35	415.10	40°10'28.267"N	104°40'32.223"W	0.00	End of Tangent
6299.00†	0.522	202.175	6248.74	-428.77	444.31	415.07	40°10'28.267"N	104°40'32.224"W	5.00	
6399.00†	5.492	183.558	6348.57	-423.59	439.11	414.60	40°10'28.215"N	104°40'32.230"W	5.00	
6489.00†	9.990	182.694	6437.73	-411.52	427.01	413.97	40°10'28.096"N	104°40'32.238"W	5.00	Last BHI OH MWD+IFR Survey
6489.19	10.000	182.692	6437.92	-411.49	426.98	413.97	40°10'28.095"N	104°40'32.238"W	5.00	End of 3D Arc
6499.00†	10.000	182.692	6447.58	-409.79	425.28	413.89	40°10'28.079"N	104°40'32.239"W	0.00	
6540.00†	10.000	182.693	6487.96	-402.70	418.16	413.55	40°10'28.008"N	104°40'32.243"W	0.00	OH Projection to Bit
6599.00†	10.000	182.693	6546.06	-392.49	407.93	413.07	40°10'27.907"N	104°40'32.250"W	0.00	
6653.30	10.000	182.692	6599.54	-383.09	398.51	412.63	40°10'27.814"N	104°40'32.255"W	0.00	End of Tangent
6699.00†	14.570	182.693	6644.18	-373.41	388.80	412.17	40°10'27.718"N	104°40'32.261"W	10.00	
6799.00†	24.570	182.693	6738.28	-340.07	355.39	410.60	40°10'27.388"N	104°40'32.281"W	10.00	
6899.00†	34.570	182.693	6825.15	-290.96	306.15	408.28	40°10'26.901"N	104°40'32.311"W	10.00	
6999.00†	44.570	182.693	6902.13	-227.56	242.60	405.30	40°10'26.273"N	104°40'32.350"W	10.00	
7099.00†	54.570	182.693	6966.90	-151.80	166.67	401.72	40°10'25.523"N	104°40'32.396"W	10.00	
7199.00†	64.570	182.693	7017.49	-65.99	80.65	397.68	40°10'24.673"N	104°40'32.448"W	10.00	
7299.00†	74.570	182.693	7052.35	27.27	-12.84	393.28	40°10'23.749"N	104°40'32.505"W	10.00	
7399.00†	84.570	182.693	7070.43	125.15	-110.96	388.67	40°10'22.779"N	104°40'32.564"W	10.00	
7453.30	90.000	182.693	7073.00	179.18	-165.12	386.12	40°10'22.244"N	104°40'32.597"W	10.00	End of 3D Arc
7499.00†	90.000	182.693	7073.00	224.72	-210.76	383.97	40°10'21.793"N	104°40'32.625"W	0.00	
7599.00†	90.000	182.693	7073.00	324.37	-310.65	379.27	40°10'20.806"N	104°40'32.685"W	0.00	
7699.00†	90.000	182.693	7073.00	424.02	-410.54	374.58	40°10'19.819"N	104°40'32.746"W	0.00	
7799.00†	90.000	182.693	7073.00	523.67	-510.43	369.88	40°10'18.832"N	104°40'32.806"W	0.00	
7899.00†	90.000	182.693	7073.00	623.32	-610.32	365.18	40°10'17.845"N	104°40'32.867"W	0.00	
7999.00†	90.000	182.693	7073.00	722.97	-710.21	360.48	40°10'16.858"N	104°40'32.927"W	0.00	
8099.00†	90.000	182.693	7073.00	822.62	-810.10	355.78	40°10'15.871"N	104°40'32.988"W	0.00	
8199.00†	90.000	182.693	7073.00	922.27	-909.99	351.09	40°10'14.883"N	104°40'33.048"W	0.00	
8299.00†	90.000	182.693	7073.00	1021.92	-1009.88	346.39	40°10'13.896"N	104°40'33.109"W	0.00	
8399.00†	90.000	182.693	7073.00	1121.57	-1109.77	341.69	40°10'12.909"N	104°40'33.169"W	0.00	
8499.00†	90.000	182.693	7073.00	1221.22	-1209.66	336.99	40°10'11.922"N	104°40'33.230"W	0.00	
8599.00†	90.000	182.693	7073.00	1320.87	-1309.55	332.29	40°10'10.935"N	104°40'33.291"W	0.00	
8699.00†	90.000	182.693	7073.00	1420.52	-1409.44	327.60	40°10'09.948"N	104°40'33.351"W	0.00	
8799.00†	90.000	182.693	7073.00	1520.17	-1509.33	322.90	40°10'08.961"N	104°40'33.412"W	0.00	
8899.00†	90.000	182.693	7073.00	1619.82	-1609.22	318.20	40°10'07.974"N	104°40'33.472"W	0.00	
8999.00†	90.000	182.693	7073.00	1719.47	-1709.11	313.50	40°10'06.987"N	104°40'33.533"W	0.00	
9099.00†	90.000	182.693	7073.00	1819.12	-1809.00	308.80	40°10'05.999"N	104°40'33.593"W	0.00	
9199.00†	90.000	182.693	7073.00	1918.77	-1908.89	304.11	40°10'05.012"N	104°40'33.654"W	0.00	
9299.00†	90.000	182.693	7073.00	2018.42	-2008.78	299.41	40°10'04.025"N	104°40'33.714"W	0.00	
9399.00†	90.000	182.693	7073.00	2118.07	-2108.67	294.71	40°10'03.038"N	104°40'33.775"W	0.00	
9499.00†	90.000	182.693	7073.00	2217.71	-2208.56	290.01	40°10'02.051"N	104°40'33.835"W	0.00	
9599.00†	90.000	182.693	7073.00	2317.36	-2308.45	285.32	40°10'01.064"N	104°40'33.896"W	0.00	
9699.00†	90.000	182.693	7073.00	2417.01	-2408.34	280.62	40°10'00.077"N	104°40'33.956"W	0.00	
9799.00†	90.000	182.693	7073.00	2516.66	-2508.22	275.92	40°09'59.090"N	104°40'34.017"W	0.00	
9899.00†	90.000	182.693	7073.00	2616.31	-2608.11	271.22	40°09'58.103"N	104°40'34.077"W	0.00	



Planned Wellpath Report

REIGLE 4N-9HZX (REV-A.0) PWP

Page 3 of 5



REFERENCE WELLPATH IDENTIFICATION

Operator	KERR-MCGEE OIL & GAS ONSHORE LP	Slot	SLOT#27 REIGLE 4N-9HZ (496'FNL & 272'FWL, SEC.4)
Area	COLORADO	Well	REIGLE 4N-9HZX
Field	WELD COUNTY (KERR MCGEE)	Wellbore	REIGLE 4N-9HZX PWB
Facility	SEC.04-T2N-R65W		

WELLPATH DATA (66 stations) † = interpolated/extrapolated station

MD [ft]	Inclination [°]	Azimuth [°]	TVD [ft]	Vert Sect [ft]	North [ft]	East [ft]	Latitude	Longitude	DLS [°/100ft]	Comments
9999.00†	90.000	182.693	7073.00	2715.96	-2708.00	266.52	40°09'57.115"N	104°40'34.138"W	0.00	
10099.00†	90.000	182.693	7073.00	2815.61	-2807.89	261.83	40°09'56.128"N	104°40'34.198"W	0.00	
10199.00†	90.000	182.693	7073.00	2915.26	-2907.78	257.13	40°09'55.141"N	104°40'34.259"W	0.00	
10299.00†	90.000	182.693	7073.00	3014.91	-3007.67	252.43	40°09'54.154"N	104°40'34.320"W	0.00	
10399.00†	90.000	182.693	7073.00	3114.56	-3107.56	247.73	40°09'53.167"N	104°40'34.380"W	0.00	
10499.00†	90.000	182.693	7073.00	3214.21	-3207.45	243.04	40°09'52.180"N	104°40'34.441"W	0.00	
10599.00†	90.000	182.693	7073.00	3313.86	-3307.34	238.34	40°09'51.193"N	104°40'34.501"W	0.00	
10699.00†	90.000	182.693	7073.00	3413.51	-3407.23	233.64	40°09'50.206"N	104°40'34.562"W	0.00	
10799.00†	90.000	182.693	7073.00	3513.16	-3507.12	228.94	40°09'49.219"N	104°40'34.622"W	0.00	
10899.00†	90.000	182.693	7073.00	3612.81	-3607.01	224.24	40°09'48.231"N	104°40'34.683"W	0.00	
10999.00†	90.000	182.693	7073.00	3712.46	-3706.90	219.55	40°09'47.244"N	104°40'34.743"W	0.00	
11099.00†	90.000	182.693	7073.00	3812.11	-3806.79	214.85	40°09'46.257"N	104°40'34.804"W	0.00	
11199.00†	90.000	182.693	7073.00	3911.76	-3906.68	210.15	40°09'45.270"N	104°40'34.864"W	0.00	
11299.00†	90.000	182.693	7073.00	4011.41	-4006.57	205.45	40°09'44.283"N	104°40'34.925"W	0.00	
11399.00†	90.000	182.693	7073.00	4111.06	-4106.46	200.76	40°09'43.296"N	104°40'34.985"W	0.00	
11499.00†	90.000	182.693	7073.00	4210.71	-4206.35	196.06	40°09'42.309"N	104°40'35.046"W	0.00	
11599.00†	90.000	182.693	7073.00	4310.36	-4306.24	191.36	40°09'41.322"N	104°40'35.106"W	0.00	
11699.00†	90.000	182.693	7073.00	4410.01	-4406.13	186.66	40°09'40.334"N	104°40'35.167"W	0.00	
11799.00†	90.000	182.693	7073.00	4509.66	-4506.02	181.97	40°09'39.347"N	104°40'35.227"W	0.00	
11899.00†	90.000	182.693	7073.00	4609.31	-4605.91	177.27	40°09'38.360"N	104°40'35.288"W	0.00	
11995.17	90.000	182.693	7073.00 ¹	4705.14	-4701.97	172.75	40°09'37.411"N	104°40'35.346"W	0.00	End of 3D Arc

HOLE & CASING SECTIONS - Ref Wellbore: REIGLE 4N-9HZX PWB Ref Wellpath: REIGLE 4N-9HZX (REV-A.0) PWP

String/Diameter	Start MD [ft]	End MD [ft]	Interval [ft]	Start TVD [ft]	End TVD [ft]	Start N/S [ft]	Start E/W [ft]	End N/S [ft]	End E/W [ft]
13.5in Open Hole	17.00	879.00	862.00	17.00	878.99	0.00	0.00	1.76	1.05
9.625in Casing Surface	17.00	879.00	862.00	17.00	878.99	0.00	0.00	1.76	1.05
8.75in Open Hole	879.00	6099.00	5220.00	878.99	6048.74	1.76	1.05	444.51	415.72
8.75in Open Hole	6099.00	7453.30	1354.30	6048.74	7073.00	444.51	415.72	-165.11	386.12
7in Casing Intermediate	17.00	7453.30	7436.30	17.00	7073.00	0.00	0.00	-165.11	386.12
6.125in Open Hole	7453.30	11995.17	4541.87	7073.00	7073.00	-165.11	386.12	-4701.97	172.75
4.5in Open Hole	17.00	11995.17	11978.17	17.00	7073.00	0.00	0.00	-4701.97	172.75



Planned Wellpath Report

REIGLE 4N-9HZX (REV-A.0) PWP

Page 4 of 5



REFERENCE WELLPATH IDENTIFICATION

Operator	KERR-MCGEE OIL & GAS ONSHORE LP	Slot	SLOT#27 REIGLE 4N-9HZ (496'FNL & 272'FWL, SEC.4)
Area	COLORADO	Well	REIGLE 4N-9HZX
Field	WELD COUNTY (KERR MCGEE)	Wellbore	REIGLE 4N-9HZX PWB
Facility	SEC.04-T2N-R65W		

TARGETS

Name	MD [ft]	TVD [ft]	North [ft]	East [ft]	Grid East [US ft]	Grid North [US ft]	Latitude	Longitude	Shape
SECTION 4 LINES		0.00	0.00	0.00	3229948.40	1307042.68	40°10'23.876"N	104°40'37.571"W	polygon
REIGLE 4N-9HZ BHL ON PLAT (51'FNL & 545'FWL, SEC.9) REV-1		7044.00	-4701.97	222.75	3230214.76	1302343.19	40°09'37.411"N	104°40'34.702"W	point
1) REIGLE 4N-9HZ BHL (51'FNL & 495'FWL, SEC.9) REV-3	11995.17	7073.00	-4701.97	172.75	3230164.77	1302342.72	40°09'37.411"N	104°40'35.346"W	point
REIGLE 4N-9HZ BHL ON PLAT (51'FNL & 545'FWL, SEC.9) REV-2		7073.00	-4701.97	222.75	3230214.76	1302343.18	40°09'37.411"N	104°40'34.702"W	point
REIGLE 4N-9HZ LAND BOX		7220.00	0.00	0.00	3229948.40	1307042.68	40°10'23.876"N	104°40'37.571"W	polygon
SEC. 4 HARDLINES (460' SETBACKS)		7220.00	0.00	0.00	3229948.40	1307042.68	40°10'23.876"N	104°40'37.571"W	polygon

SURVEY PROGRAM - Ref Wellbore: REIGLE 4N-9HZX PWB Ref Wellpath: REIGLE 4N-9HZX (REV-A.0) PWP

Start MD [ft]	End MD [ft]	Positional Uncertainty Model	Log Name/Comment	Wellbore
17.00	836.00	Generic gyro - continuous (Standard)		REIGLE 4N-9HZ AWB
836.00	6099.00	NaviTrak (MAGCORR,IFR)		REIGLE 4N-9HZ AWB
6099.00	7453.30	NaviTrak (MAGCORR,IFR)		REIGLE 4N-9HZX PWB
7453.30	11995.17	OnTrak (MAGCORR,IFR)		REIGLE 4N-9HZX PWB



Planned Wellpath Report

REIGLE 4N-9HZX (REV-A.0) PWP

Page 5 of 5



REFERENCE WELLPATH IDENTIFICATION

Operator	KERR-MCGEE OIL & GAS ONSHORE LP	Slot	SLOT#27 REIGLE 4N-9HZ (496'FNL & 272'FWL, SEC.4)
Area	COLORADO	Well	REIGLE 4N-9HZX
Field	WELD COUNTY (KERR MCGEE)	Wellbore	REIGLE 4N-9HZX PWB
Facility	SEC.04-T2N-R65W		

WELLPATH COMMENTS

MD [ft]	Inclination [°]	Azimuth [°]	TVD [ft]	Comment
17.00	0.000	57.080	17.00	Tie-On
117.00	0.440	57.080	117.00	Begin GYRO Surveys
836.00	0.300	189.500	835.99	Tie-Into GYRO Surveys
966.00	0.370	354.740	965.99	Begin BHI OH MWD+IFR Surveys
6489.00	9.990	182.694	6437.73	Last BHI OH MWD+IFR Survey
6540.00	10.000	182.693	6487.96	OH Projection to Bit