

HALLIBURTON

WPX ENERGY ROCKY MOUNTAIN LLC-EBUS

**Federal RGU 413-25-198
SULPHUR CREEK
Rio Blanco County , Colorado**

Cement Multiple Stages

01-Aug-2012

Post Job Summary



Cementing Job Summary

The Road to Excellence Starts with Safety

| | | | |
|---|---------------------------|---|-------------------------------|
| Sold To #: 300721 | Ship To #: 2942436 | Quote #: | Sales Order #: 9704699 |
| Customer: WPX ENERGY ROCKY MOUNTAIN LLC-EBUS | | Customer Rep: Brunk, Andrew | |
| Well Name: Federal RGU | Well #: 413-25-198 | API/UWI #: 05-103-11872 | |
| Field: SULPHUR CREEK | City (SAP): MEEKER | County/Parish: Rio Blanco | State: Colorado |
| Lat: N 39.928 deg. OR N 39 deg. 55 min. 41.3 secs. | | Long: W 108.346 deg. OR W -109 deg. 39 min. 13.378 secs. | |
| Contractor: CYCLONE 29 | | Rig/Platform Name/Num: CYCLONE 29 | |
| Job Purpose: Cement Multiple Stages | | | |
| Well Type: Development Well | | Job Type: Cement Multiple Stages | |
| Sales Person: MAYO, MARK | | Srvs Supervisor: DEUSSEN, EDWARD | MBU ID Emp #: 485182 |

Job Personnel

| HES Emp Name | Exp Hrs | Emp # | HES Emp Name | Exp Hrs | Emp # | HES Emp Name | Exp Hrs | Emp # |
|----------------------------|---------|--------|-----------------|---------|--------|------------------|---------|--------|
| DEUSSEN, EDWARD Eric | 16.0 | 485182 | PARKER, BRANDON | 16.0 | 503646 | STILLSON, ERIC W | 16.0 | 393789 |
| WEAVER, CARLTON Russell | 16.0 | 457698 | | | | | | |

Equipment

| HES Unit # | Distance-1 way | HES Unit # | Distance-1 way | HES Unit # | Distance-1 way | HES Unit # | Distance-1 way |
|------------|----------------|------------|----------------|------------|----------------|------------|----------------|
| 10567589C | 30 mile | 10722398 | 30 mile | 10867425 | 30 mile | 10897891 | 30 mile |
| 11139330 | 30 mile | 11583932 | 30 mile | 11808829 | 30 mile | 11562538 | 30 mile |
| 10867423 | 30 mile | | | | | | |

Job Hours

| Date | On Location Hours | Operating Hours | Date | On Location Hours | Operating Hours | Date | On Location Hours | Operating Hours |
|------------|-------------------|-----------------|------------|-------------------|-----------------|------|-------------------|-----------------|
| 08/01/2012 | 9.0 | 7.0 | 08/02/2012 | 7.0 | 2.0 | | | |

TOTAL

Total is the sum of each column separately

Job

Job Times

| | | | | | | | | |
|------------------------|----------|-------------------|---------------|----------|---------------|-----------------|-------|-----------|
| Formation Name | | | | | | Date | Time | Time Zone |
| Formation Depth (MD) | Top | | Bottom | | Called Out | 01 - Aug - 2012 | 08:30 | MST |
| Form Type | | BHST | | | On Location | 01 - Aug - 2012 | 15:00 | MST |
| Job depth MD | 3978. ft | | Job Depth TVD | 3978. ft | Job Started | 01 - Aug - 2012 | 17:50 | MST |
| Water Depth | | Wk Ht Above Floor | | 4. ft | Job Completed | 01 - Aug - 2012 | 05:31 | MST |
| Perforation Depth (MD) | From | | To | | Departed Loc | 01 - Aug - 2012 | 07:00 | MST |

Well Data

| <i>Description</i> | <i>New / Used</i> | <i>Max pressure psig</i> | <i>Size in</i> | <i>ID in</i> | <i>Weight lbm/ft</i> | <i>Thread</i> | <i>Grade</i> | <i>Top MD ft</i> | <i>Bottom MD ft</i> | <i>Top TVD ft</i> | <i>Bottom TVD ft</i> |
|--------------------|-----------------------|----------------------------------|--------------------|------------------|--------------------------|---------------|--------------|----------------------|-----------------------------|---------------------------|------------------------------|
| OPEN HOLE | | | | 13.5 | | | | 1800. | 3986. | | |
| OPEN HOLE | | | | 14.75 | | | | . | 1800. | | |
| SURFACE CASING | Unknown | | 9.625 | 8.921 | 36. | | J-55 | . | 3978. | | |

Tools and Accessories

| Type | Size | Qty | Make | Depth | Type | Size | Qty | Make | Depth | Type | Size | Qty | Make |
|--------------|------|-----|------|-------|-------------|------|-----|------|-------|----------------|------|-------|------|
| Guide Shoe | | | | | Packer | | | | | Top Plug | | | |
| Float Shoe | | | | | Bridge Plug | | | | | Bottom Plug | | | |
| Float Collar | | | | | Retainer | | | | | SSR plug set | | | |
| Insert Float | | | | | | | | | | Plug Container | 1 | 9 5/8 | HES |
| Stage Tool | | | | 1869 | | | | | | Centralizers | | | |

Miscellaneous Materials

| Gelling Agt | Conc | Surfactant | Conc | Acid Type | Qty | Conc | % |
|---------------|------|------------|------|-----------|------|------|---|
| Treatment Fld | Conc | Inhibitor | Conc | Sand Type | Size | Qty | |

Fluid Data

Stage/Plug #: 1

| Fluid # | Stage Type | Fluid Name | Qty | Qty uom | Mixing Density lbm/gal | Yield ft ³ /sk | Mix Fluid Gal/sk | Rate bbl/min | Total Mix Fluid Gal/sk |
|--|-----------------------|-------------------------------|--------|-----------------------------------|------------------------|---------------------------|------------------|--------------|------------------------|
| 1 | Fresh Water Spacer | | 20.00 | bbl | 8.33 | .0 | .0 | 6.0 | |
| 2 | 1st Stage Lead Cement | ECONOCEM (TM) SYSTEM (452992) | 565.0 | sacks | 12.8 | 1.77 | 9.34 | 8.0 | 9.34 |
| | 9.34 Gal | FRESH WATER | | | | | | | |
| 3 | 1st Stage Tail Cement | VARICEM (TM) CEMENT (452009) | 170.0 | sacks | 12.8 | 1.96 | 10.96 | 8.0 | 10.96 |
| | 10.96 Gal | FRESH WATER | | | | | | | |
| 4 | Displacement | | 305.00 | bbl | 8.33 | .0 | .0 | 10.0 | |
| 5 | Fresh Water Spacer | | 20.00 | bbl | 8.33 | .0 | .0 | 6.0 | |
| 6 | 2nd Stage Tail | VARICEM (TM) CEMENT (452009) | 795.0 | sacks | 12.8 | 1.96 | 10.95 | 8.0 | 10.95 |
| | 10.95 Gal | FRESH WATER | | | | | | | |
| 7 | Displacement | | 144.00 | bbl | 8.33 | .0 | .0 | 10.0 | |
| 8 | Top Out Cement | HALCEM (TM) SYSTEM (452986) | 525.0 | sacks | 15.8 | 1.15 | 5.0 | 2.0 | 5.0 |
| | 5 Gal | FRESH WATER | | | | | | | |
| Calculated Values | | Pressures | | Volumes | | | | | |
| Displacement | 450.2 | Shut In: Instant | | Lost Returns | | Cement Slurry | 622.5 | Pad | |
| Top Of Cement | SURFACE | 5 Min | | Cement Returns | | Actual Displacement | 450.2 | Treatment | |
| Frac Gradient | | 15 Min | | Spacers | 46 | Load and Breakdown | | Total Job | 1185.4 |
| Rates | | | | | | | | | |
| Circulating | | Mixing | 8 | Displacement | 10 | Avg. Job | 9 | | |
| Cement Left In Pipe | Amount | 23.4 ft | Reason | Shoe Joint | | | | | |
| Frac Ring # 1 @ | ID | Frac ring # 2 @ | ID | Frac Ring # 3 @ | ID | Frac Ring # 4 @ | ID | | |
| The Information Stated Herein Is Correct | | | | Customer Representative Signature | | | | | |

The Road to Excellence Starts with Safety

| | | | |
|--|--------------------|--|-------------------------|
| Sold To #: 300721 | Ship To #: 2942436 | Quote #: | Sales Order #: 9704699 |
| Customer: WPX ENERGY ROCKY MOUNTAIN LLC-EBUS | | Customer Rep: Brunk, Andrew | |
| Well Name: Federal RGU | | Well #: 413-25-198 | API/UWI #: 05-103-11872 |
| Field: SULPHUR CREEK | City (SAP): MEEKER | County/Parish: Rio Blanco | State: Colorado |
| Legal Description: | | | |
| Lat: N 39.928 deg. OR N 39 deg. 55 min. 41.3 secs. | | Long: W 108.346 deg. OR W -109 deg. 39 min. 13.378 secs. | |
| Contractor: CYCLONE 29 | | Rig/Platform Name/Num: CYCLONE 29 | |
| Job Purpose: Cement Multiple Stages | | | Ticket Amount: |
| Well Type: Development Well | | Job Type: Cement Multiple Stages | |
| Sales Person: MAYO, MARK | | Srvc Supervisor: DEUSSEN, EDWARD | MBU ID Emp #: 485182 |

| Activity Description | Date/Time | Cht # | Rate bbl/ min | Volume bbl | | Pressure psig | | Comments |
|--|---------------------|----------|---------------------|---------------|-------|------------------|--------|--|
| | | | | Stage | Total | Tubing | Casing | |
| Call Out | 08/01/2012 08:30 | | | | | | | |
| Pre-Convoy Safety Meeting | 08/01/2012 11:30 | | | | | | | |
| Crew Leave Yard | 08/01/2012 11:45 | | | | | | | 1 ELITE, 2 660s, 1 PICKUP |
| Arrive At Loc | 08/01/2012 15:00 | | | | | | | RIG STILL RUNNING CASING |
| Assessment Of Location Safety Meeting | 08/01/2012 15:45 | | | | | | | |
| Pre-Rig Up Safety Meeting | 08/01/2012 16:15 | | | | | | | |
| Rig-Up Equipment | 08/01/2012 16:30 | | | | | | | 1 HARD LINE TO FLOOR, 2 WATER LINES TO UPRIGHT AND DAY TANK, 1 BULK HOSE TO SILO AND 660 |
| Pre-Job Safety Meeting | 08/01/2012 17:30 | | | | | | | |
| Start Job | 08/01/2012 17:50 | | | | | | | TD 3986, TP 3978, SJ 23.40, MW 9.2, OH 14 3/4 to 1800', 13 1/2 TO 3986, CSG 9 5/8", 36#, TOOL SET AT 1869' |
| Pump Water | 08/01/2012 17:51 | | 2 | 2 | | | 140.0 | FILL LINES |
| Pressure Test | 08/01/2012 17:56 | | | | | | | PRESSURED UP TO 3921 PSI - PRESSURE HELD WELL |
| Pump Spacer 1 | 08/01/2012 18:01 | | 6 | 20 | | | 340.0 | FRESH WATER SPACER |
| Activity Description | Date/Time | Cht # | Rate bbl/ min | Volume bbl | | Pressure psig | | Comments |
| | | | | Stage | Total | Tubing | Casing | |

Sold To #: 300721

Ship To #: 2942436

Quote #:

Sales Order #:

9704699

SUMMIT Version: 7.3.0039

Thursday, August 02, 2012 06:13:00

| | | | | | | | |
|--|---------------------|--|----|-------|--|------------|---|
| Pump Lead Cement | 08/01/2012 18:07 | | 8 | 178.1 | | 651.0 | 565 SKS, 12.8 PPG, 1.77 YIELD, 9.34 GAL/SK - TUFF FIBER IN FIRST 100 BBLS - HAD UNEXPECTED SHUTDOWN PRIOR TO SWAP-BULK HOSE HAD A HOLE-HAD TO SWAP OUT BULK HOSE, SHUTDOWN FOR 2 MINUTES - LOST RETURNS AS A RESULT OF SHUTTING DOWN |
| Pump Tail Cement | 08/01/2012 18:36 | | 8 | 59.3 | | 442.0 | 170 SKS, 12.8 PPG, 1.96 YIELD, 10.96 GAL/SK |
| Shutdown | 08/01/2012 18:43 | | | | | | |
| Drop Plug | 08/01/2012 18:47 | | | | | | WIPER PLUG |
| Pump Displacement | 08/01/2012 18:51 | | 10 | 305.7 | | 980.0 | FRESH WATER - GOT RETURNS RE- ESTABLISHED DURING DISPLACEMENT, THEN LOST THEM AGAIN AT 250 BBLS DISPLACEMENT PUMPED |
| Slow Rate | 08/01/2012 19:22 | | 4 | 295 | | 768.0 | |
| Bump Plug | 08/01/2012 19:30 | | | | | 782.0 | PRESSURED UP TO 1364 PSI |
| Check Floats | 08/01/2012 19:33 | | | | | | FLOATS HELD - GOT 2 BBL BACK |
| Drop Opening Device For Multiple Stage Cementer | 08/01/2012 19:35 | | | | | | WAIT 10 MINUTES FOR TOOL TO FALL |
| Pump Spacer 1 | 08/01/2012 20:15 | | 4 | 20 | | 575.0 | TOOK 3 ATTEMPTS TO PRESSURE UP TO OPEN TOOL |
| Pump Tail Cement | 08/01/2012 20:21 | | 8 | 277.5 | | 651.0 | 795 SKS, 12.8 PPG, 1.96 YIELD, 10.95 GAL/SK - TUFF FIBER IN LAST 100 BBLS |
| Shutdown | 08/01/2012 20:57 | | | | | | |
| Drop Plug | 08/01/2012 21:00 | | | | | | CLOSING PLUG |
| Pump Displacement | 08/01/2012 21:01 | | 10 | 144.5 | | 1103. 0 | FRESH WATER - RE- ESTABLISHED RETURNS |

Cementing Job Log

| Activity Description | Date/Time | Cht # | Rate bbl/min | Volume bbl | | Pressure psig | | Comments |
|-----------------------------|------------------|-------|--------------|------------|-------|---------------|--------|--|
| | | | | Stage | Total | Tubing | Casing | |
| Slow Rate | 08/01/2012 21:18 | | 4 | 10 | | | 424.0 | |
| Bump Plug | 08/01/2012 21:20 | | | | | | 486.0 | PRESSURED UP TO 1688 PSI TO CLOSE TOOL |
| Check Floats | 08/01/2012 21:22 | | | | | | | FLOATS HELD - GOT 1 BBL BACK |
| End Job | 08/01/2012 21:24 | | | | | | | DID NOT GET CEMENT BACK TO SURFACE |
| Pump Cement | 08/01/2012 22:20 | | 2 | 43.2 | | | 42.0 | TOPOUT FOR FIRST 3 HOLES ON PAD - USED APPROX. 211 SACKS-GOT CEMENT TO SURFACE ON ALL 3 HOLES |
| Shutdown | 08/01/2012 23:04 | | | | | | | ORDERED 350 MORE SACKS OF TOPOUT FOR HOLE JUST FINISHED SURFACE CEMENTING (RGU 413-25-198) |
| Pump Water | 08/02/2012 01:24 | | 2 | 3 | | | 64.0 | WATER AHEAD OF TOPOUT |
| Pump Cement | 08/02/2012 01:28 | | 2 | 26.2 | | | 145.0 | TOPOUT OF RGU 413-25-198 - KICKOUTS INITIALLY SET AT 100 PSI, HIT HALFWAY THRU PUMPING TOPOUT - BROUGHT KICKOUTS UP TO 300 PSI |
| Pump Water | 08/02/2012 01:43 | | 2 | 3 | | | 110.0 | WATER BEHIND |
| Shutdown | 08/02/2012 01:44 | | | | | | | USED REMAINING 139 SKS |
| Pump Water | 08/02/2012 04:59 | | 2 | 3 | | | 50.0 | 2ND TRUCK OF TOPOUT |
| Pump Cement | 08/02/2012 05:01 | | 2 | 34.6 | | | 95.0 | TOPOUT - G NEAT - USED 175 SKS |
| Shutdown | 08/02/2012 05:31 | | | | | | | CEMENT TO SURFACE |
| Pre-Rig Down Safety Meeting | 08/02/2012 05:45 | | | | | | | |
| Rig-Down Equipment | 08/02/2012 06:00 | | | | | | | |
| Pre-Convoy Safety Meeting | 08/02/2012 06:45 | | | | | | | |

HALLIBURTON***Cementing Job Log***

| Activity Description | Date/Time | Cht # | Rate bbl/ min | Volume bbl | | Pressure psig | | Comments |
|----------------------|---------------------|----------|---------------------|---------------|-------|------------------|--------|--|
| | | | | Stage | Total | Tubing | Casing | |
| Crew Leave Location | 08/02/2012 07:00 | | | | | | | |
| Other | 08/02/2012 07:01 | | | | | | | THANK YOU FOR USING HALLIBURTON AND ED DEUSSEN AND CREW |

Sold To # : 300721

Ship To # :2942436

Quote # :

Sales Order # :

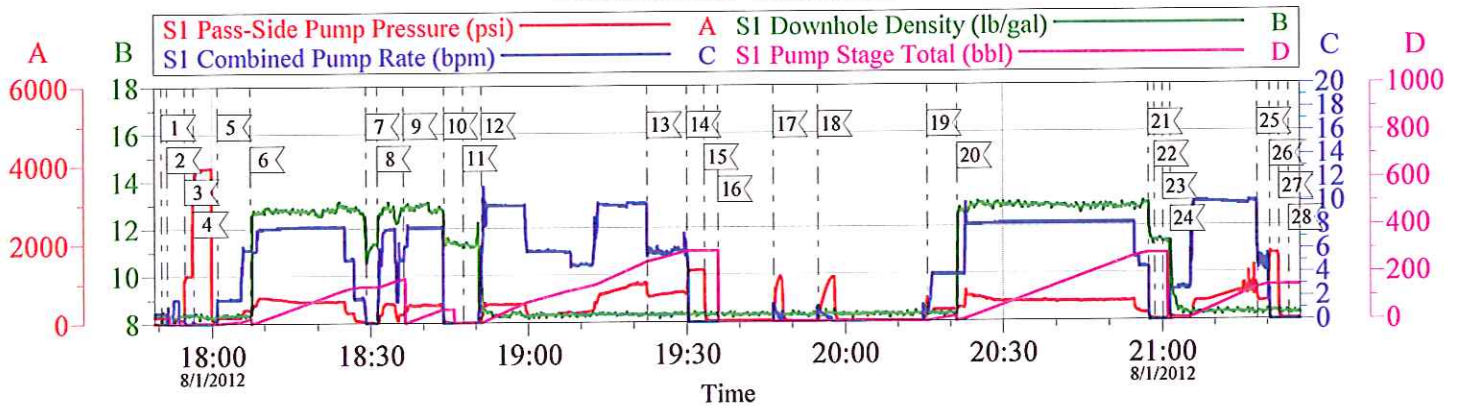
9704699

SUMMIT Version: 7.3.0039

Thursday, August 02, 2012 06:13:00

WPX - RGU 413-25-198

9 5/8 SURFACE - COMPLETE

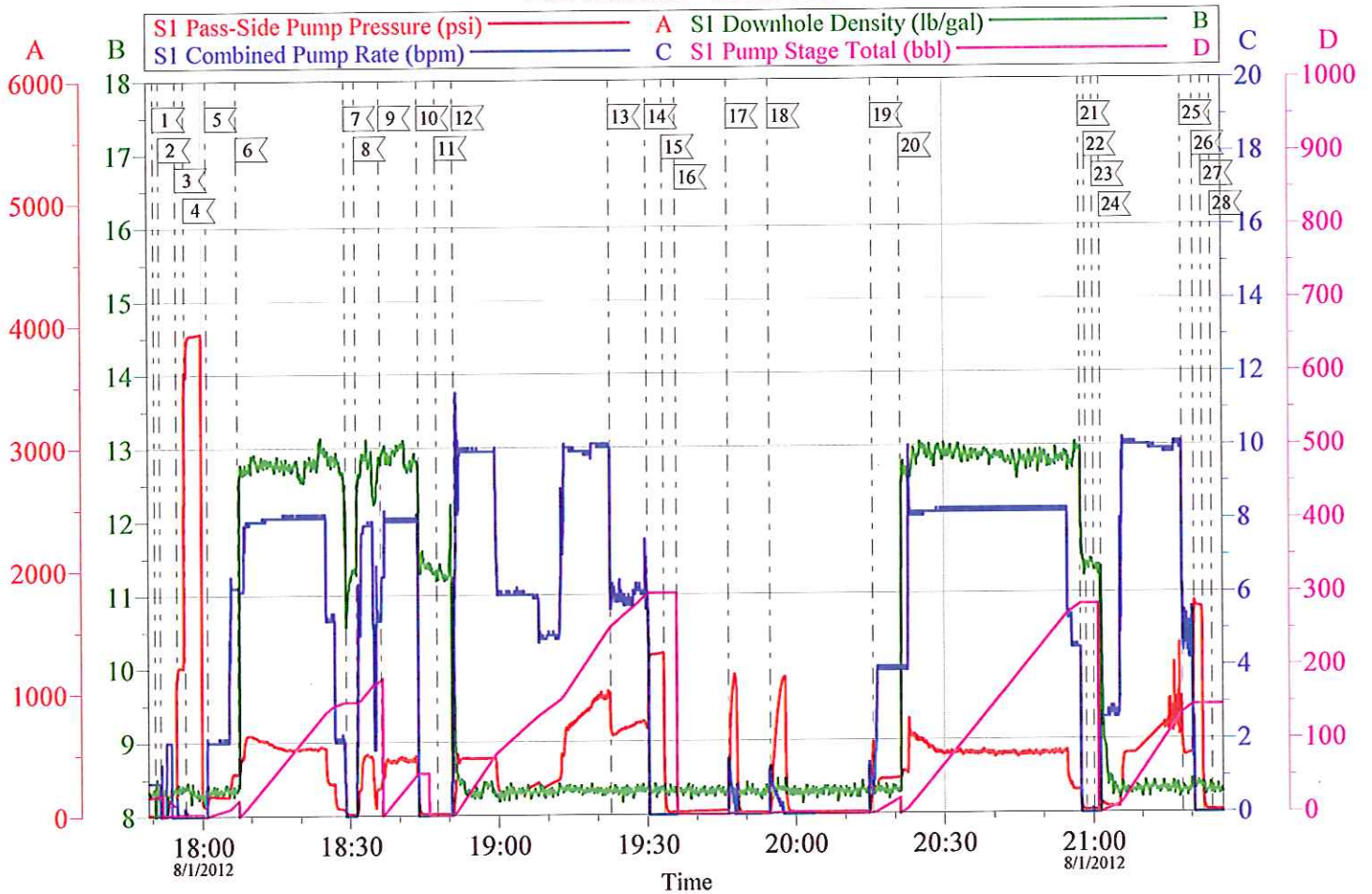


| Local Event Log | | | | | |
|-----------------|---------------------------|----------|----|----------------------------|----------|
| 1 | START JOB | 17:50:31 | 2 | FILL LINES | 17:51:37 |
| 3 | 5TH GEAR STALLOUT | 17:54:53 | 4 | PRESSURE TEST | 17:56:36 |
| 5 | PUMP H2O SPACER | 18:01:08 | 6 | PUMP LEAD CEMENT | 18:07:21 |
| 7 | SHUTDOWN | 18:29:09 | 8 | PUMP CEMENT | 18:31:17 |
| 9 | PUMP TAIL CEMENT | 18:36:16 | 10 | SHUTDOWN | 18:43:59 |
| 11 | DROP WIPER PLUG | 18:47:39 | 12 | PUMP DISPLACEMENT | 18:51:08 |
| 13 | SLOW RATE | 19:22:38 | 14 | BUMP PLUG | 19:30:02 |
| 15 | CHECK FLOATS | 19:33:23 | 16 | DROP OPENING TOOL | 19:35:58 |
| 17 | TRY TO OPEN TOOL | 19:46:28 | 18 | TRY TO OPEN TOOL | 19:54:53 |
| 19 | OPEN TOOL/PUMP H2O SPACER | 20:15:38 | 20 | PUMP 2ND STAGE TAIL CEMENT | 20:21:19 |
| 21 | SHUTDOWN | 20:57:28 | 22 | WASH UP ON PLUG | 20:58:35 |
| 23 | DROP CLOSING PLUG | 21:00:10 | 24 | PUMP DISPLACEMENT | 21:01:39 |
| 25 | SLOW RATE | 21:18:08 | 26 | BUMP PLUG | 21:20:30 |
| 27 | CHECK FLOATS | 21:22:17 | 28 | END JOB | 21:24:07 |

| | | |
|----------------------------------|-------------------------------|------------------------|
| Customer: WPX | Job Date: 01-Aug-2012 | Sales Order #: 9704699 |
| Well Description: RGU 413-25-198 | Job Type: SURFACE | ADC Used: YES |
| Company Rep: ANDREW BRUNK | Cement Supervisor: ED DEUSSEN | Elite #3: RUSTY WEAVER |

OptiCem v6.4.10
01-Aug-12 23:37

WPX - RGU 413-25-198 9 5/8 SURFACE - COMPLETE

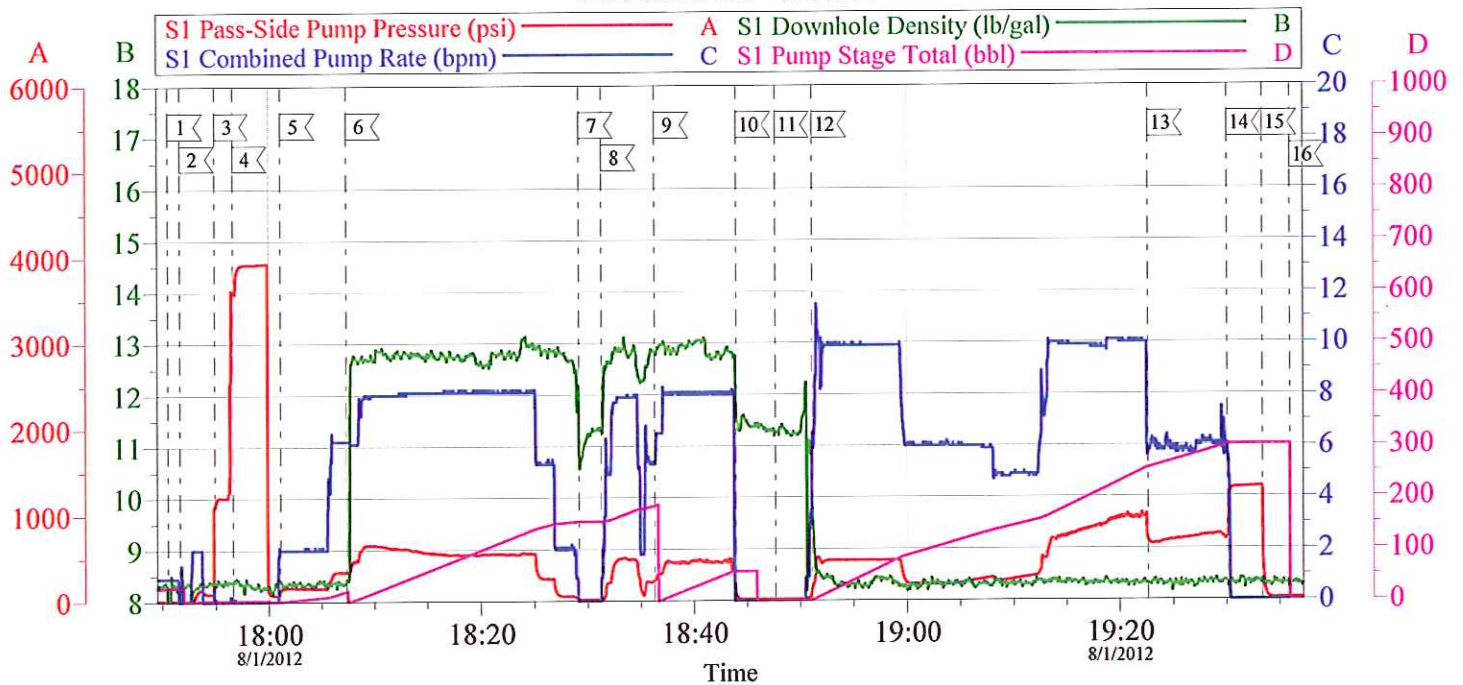


| | | |
|----------------------------------|-------------------------------|------------------------|
| Customer: WPX | Job Date: 01-Aug-2012 | Sales Order #: 9704699 |
| Well Description: RGU 413-25-198 | Job Type: SURFACE | ADC Used: YES |
| Company Rep: ANDREW BRUNK | Cement Supervisor: ED DEUSSEN | Elite #3: RUSTY WEAVER |

OptiCem v6.4.10
01-Aug-12 23:38

WPX - RGU 413-25-198

9 5/8 SURFACE - STAGE 1



| Local Event Log | | | | | |
|-----------------|-------------------|----------|----|-------------------|----------|
| 1 | START JOB | 17:50:31 | 2 | FILL LINES | 17:51:37 |
| 3 | 5TH GEAR STALLOUT | 17:54:53 | 4 | PRESSURE TEST | 17:56:36 |
| 5 | PUMP H2O SPACER | 18:01:08 | 6 | PUMP LEAD CEMENT | 18:07:21 |
| 7 | SHUTDOWN | 18:29:09 | 8 | PUMP CEMENT | 18:31:17 |
| 9 | PUMP TAIL CEMENT | 18:36:16 | 10 | SHUTDOWN | 18:43:59 |
| 11 | DROP WIPER PLUG | 18:47:39 | 12 | PUMP DISPLACEMENT | 18:51:08 |
| 13 | SLOW RATE | 19:22:38 | 14 | BUMP PLUG | 19:30:02 |
| 15 | CHECK FLOATS | 19:33:23 | 16 | DROP OPENING TOOL | 19:35:58 |

Customer: WPX
Well Description: RGU 413-25-198
Company Rep: ANDREW BRUNK

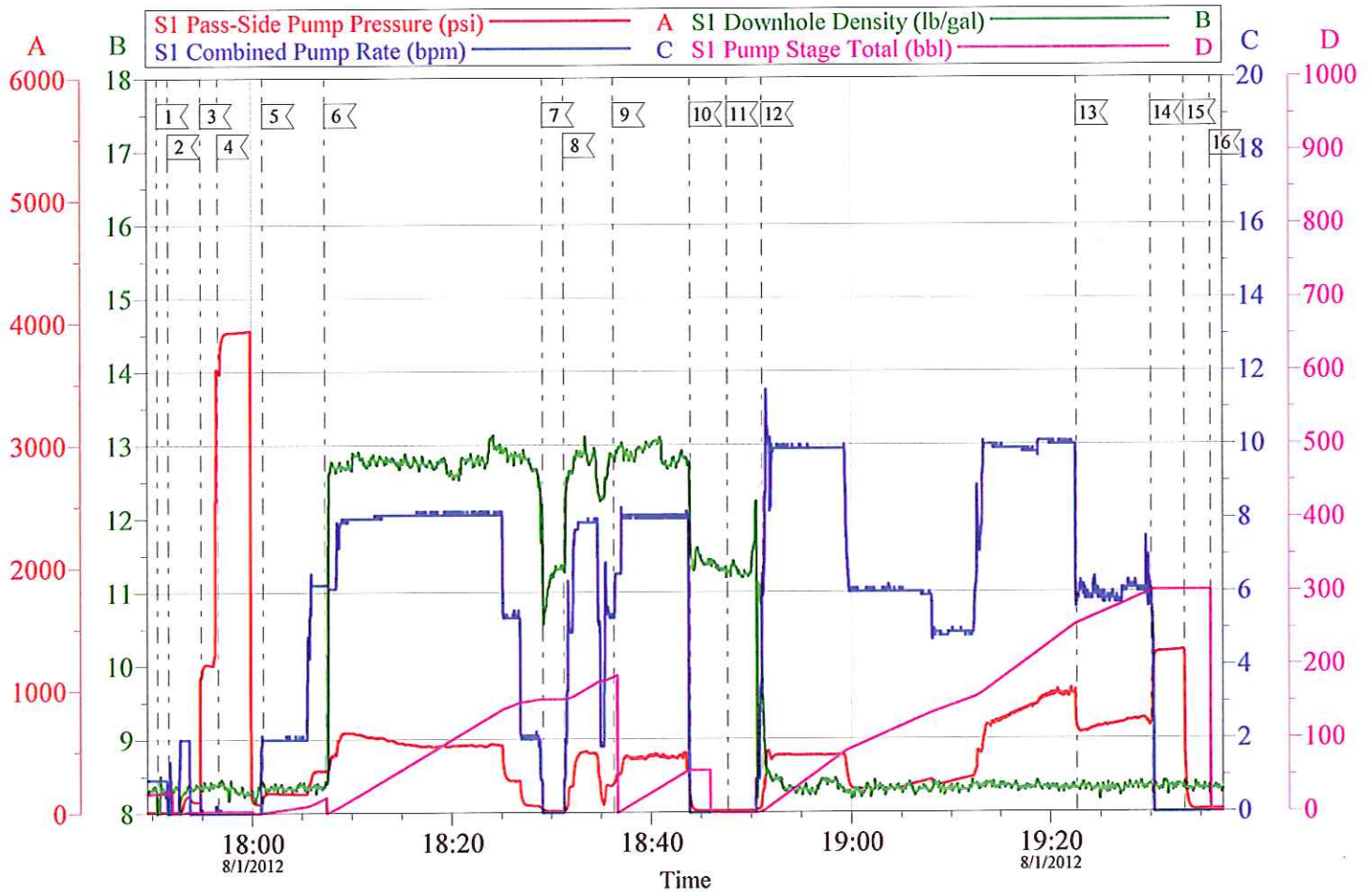
Job Date: 01-Aug-2012
Job Type: SURFACE
Cement Supervisor: ED DEUSSEN

Sales Order #: 9704699
ADC Used: YES
Elite #3: RUSTY WEAVER

OptiCem v6.4.10
01-Aug-12 23:29

WPX - RGU 413-25-198

9 5/8 SURFACE - STAGE 1

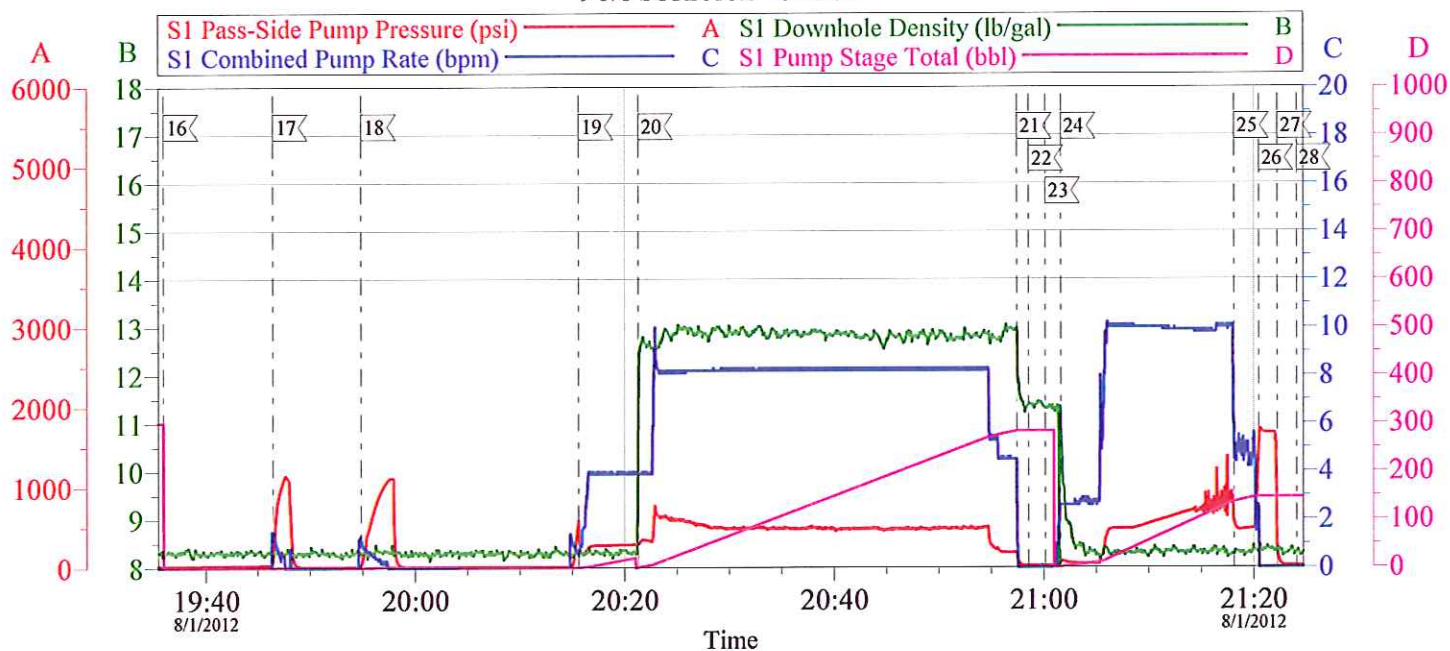


| | | |
|----------------------------------|-------------------------------|------------------------|
| Customer: WPX | Job Date: 01-Aug-2012 | Sales Order #: 9704699 |
| Well Description: RGU 413-25-198 | Job Type: SURFACE | ADC Used: YES |
| Company Rep: ANDREW BRUNK | Cement Supervisor: ED DEUSSEN | Elite #3: RUSTY WEAVER |

OptiCem v6.4.10
01-Aug-12 23:29

WPX - RGU 413-25-198

9 5/8 SURFACE - STAGE 2



| Local Event Log | | | |
|-----------------|----------------------------|----------|---------------------------------------|
| 16 | DROP OPENING TOOL | 19:35:58 | 17 TRY TO OPEN TOOL 19:46:28 |
| 18 | TRY TO OPEN TOOL | 19:54:53 | 19 OPEN TOOL/PUMP H2O SPACER 20:15:38 |
| 20 | PUMP 2ND STAGE TAIL CEMENT | 20:21:19 | 21 SHUTDOWN 20:57:28 |
| 22 | WASH UP ON PLUG | 20:58:35 | 23 DROP CLOSING PLUG 21:00:10 |
| 24 | PUMP DISPLACEMENT | 21:01:39 | 25 SLOW RATE 21:18:08 |
| 26 | BUMP PLUG | 21:20:30 | 27 CHECK FLOATS 21:22:17 |
| 28 | END JOB | 21:24:07 | |

Customer: WPX
Well Description: RGU 413-25-198
Company Rep: ANDREW BRUNK

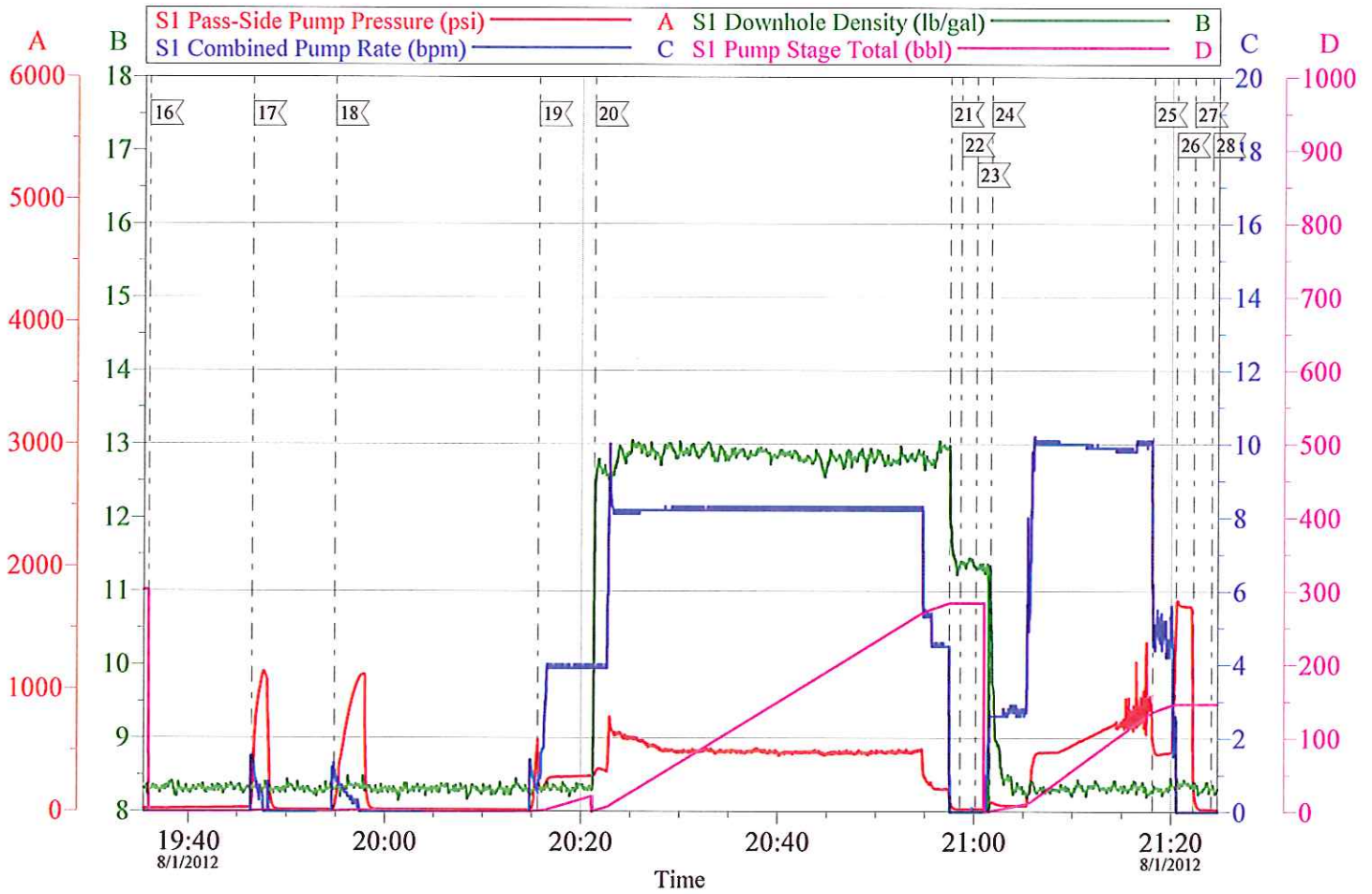
Job Date: 01-Aug-2012
Job Type: SURFACE
Cement Supervisor: ED DEUSSEN

Sales Order #: 9704699
ADC Used: YES
Elite #3: RUSTY WEAVER

OptiCem v6.4.10
01-Aug-12 23:35

WPX - RGU 413-25-198

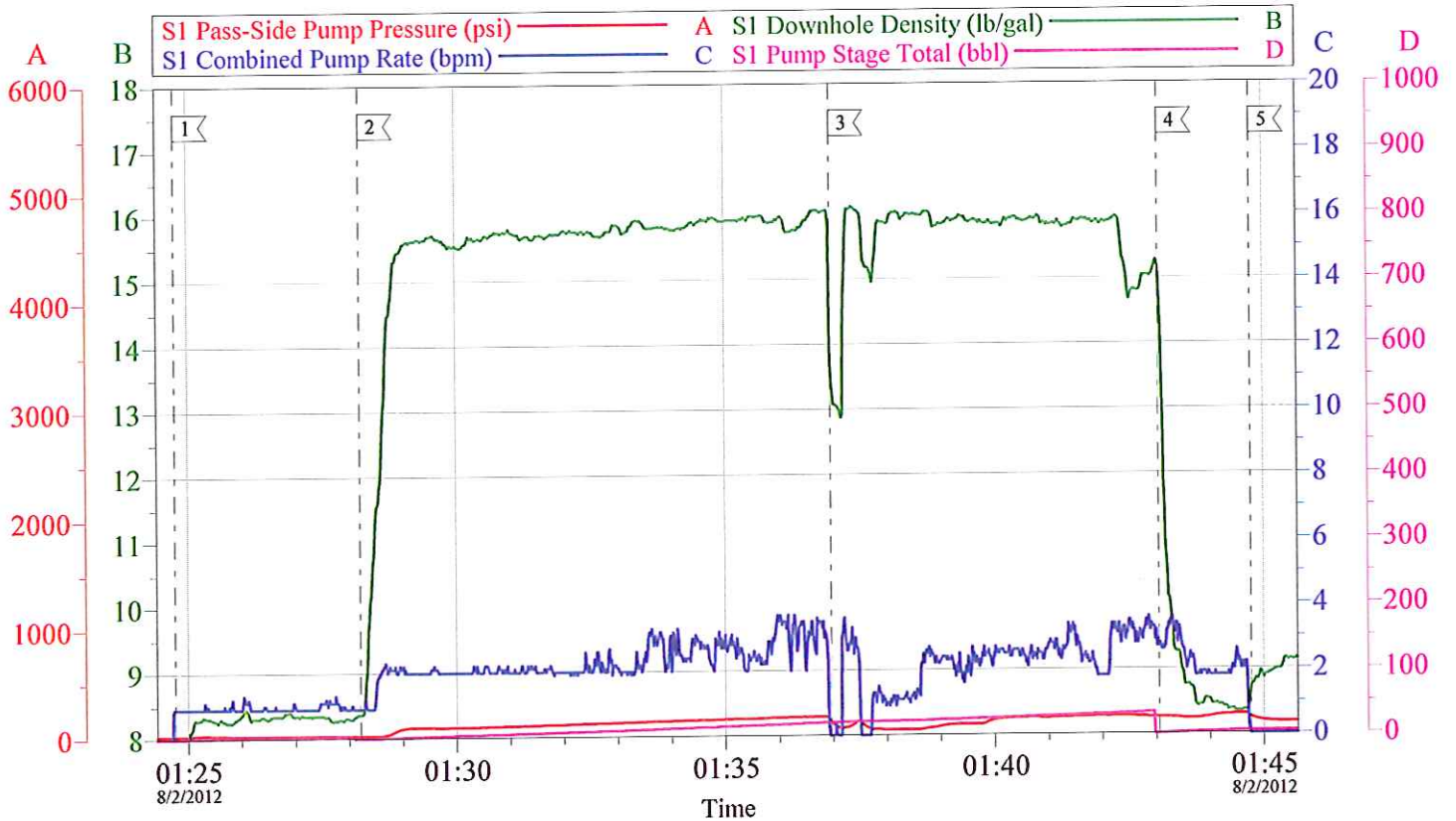
9 5/8 SURFACE - STAGE 2



| | | |
|----------------------------------|-------------------------------|------------------------|
| Customer: WPX | Job Date: 01-Aug-2012 | Sales Order #: 9704699 |
| Well Description: RGU 413-25-198 | Job Type: SURFACE | ADC Used: YES |
| Company Rep: ANDREW BRUNK | Cement Supervisor: ED DEUSSEN | Elite #3: RUSTY WEAVER |

OptiCem v6.4.10
01-Aug-12 23:36

WPX - RGU 413-25-198 TOPOUT



| Local Event Log | | | |
|------------------|----------|----------------------|----------|
| 1 PUMP H2O AHEAD | 01:24:46 | 2 PUMP TOPOUT CEMENT | 01:28:13 |
| 3 KICKOUTS HIT | 01:36:57 | 4 PUMP H2O BEHIND | 01:43:03 |
| 5 SHUTDOWN | 01:44:46 | | |

| | | |
|----------------------------------|-------------------------------|------------------------|
| Customer: WPX | Job Date: 02-Aug-2012 | Sales Order #: 9704699 |
| Well Description: RGU 413-25-198 | Job Type: TOPOUT | ADC Used: NO |
| Company Rep: ANDREW BRUNK | Cement Supervisor: ED DEUSSEN | Elite #7: RUSTY WEAVER |

OptiCem v6.4.10
02-Aug-12 01:56

WPX - RGU 413-25-198

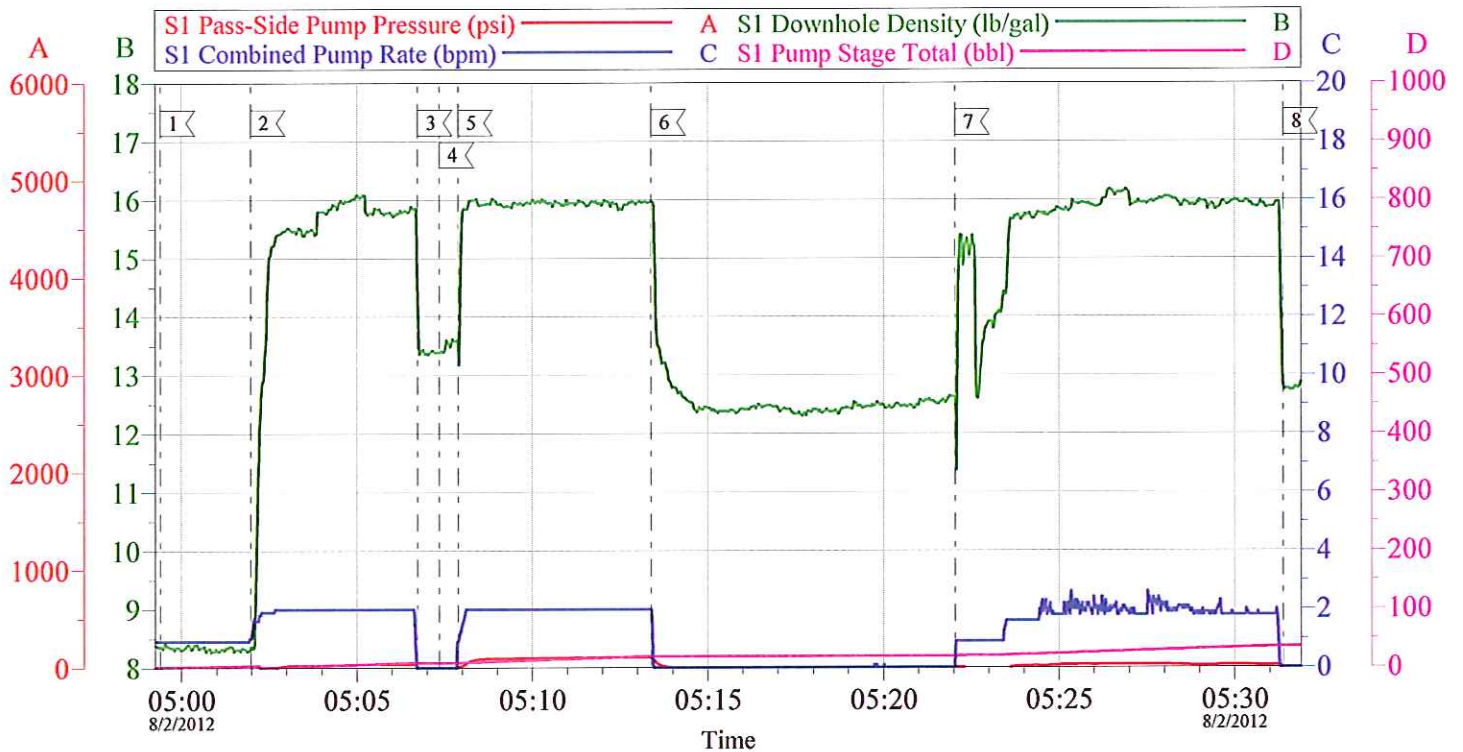
TOPOUT



| | | |
|----------------------------------|--------------------------------|------------------------|
| Customer: WPX | Job Date: 02-Aug-2012 | Sales Order #: 9704699 |
| Well Description: RGU 413-25-198 | Job Type: TOPOUT | ADC Used: NO |
| Company Rep: ANDREW BRUNK | Cement Supervisor: ED DEUSSSEN | Elite #7: RUSTY WEAVER |

OptiCem v6.4.10
02-Aug-12 01:57

WPX - RGU 413-25-198 TOPOUT 2



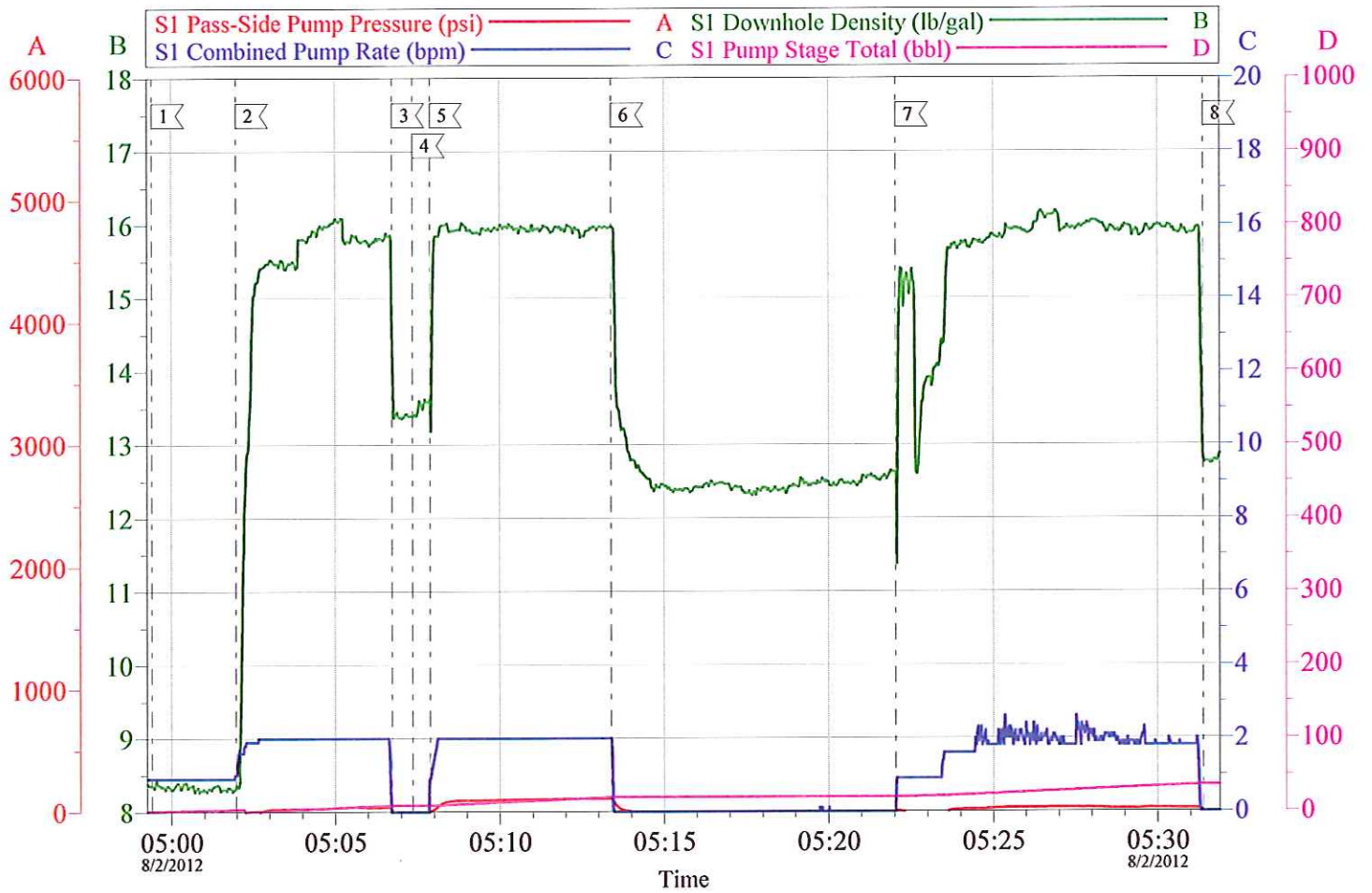
| Local Event Log | | | | | |
|-----------------|------------------|----------|---|----------------------------|----------|
| 1 | PUMP WATER AHEAD | 04:59:24 | 2 | PUMP TOPOUT CEMENT | 05:01:59 |
| 3 | SHUTDOWN | 05:06:44 | 4 | PULL HARD LINE OUT OF HOLE | 05:07:22 |
| 5 | PUMP TOPOUT | 05:07:53 | 6 | SHUTDOWN | 05:13:23 |
| 7 | TOP OFF | 05:22:02 | 8 | SHUTDOWN | 05:31:23 |

| | | |
|----------------------------------|-------------------------------|------------------------|
| Customer: WPX | Job Date: 02-Aug-2012 | Sales Order #: 9704699 |
| Well Description: RGU 413-25-198 | Job Type: TOPOUT 2 | ADC Used: NO |
| Company Rep: ANDREW BRUNK | Cement Supervisor: ED DEUSSEN | Elite #3: RUSTY WEAVER |

OptiCem v6.4.10
02-Aug-12 05:38

WPX - RGU 413-25-198

TOPOUT 2



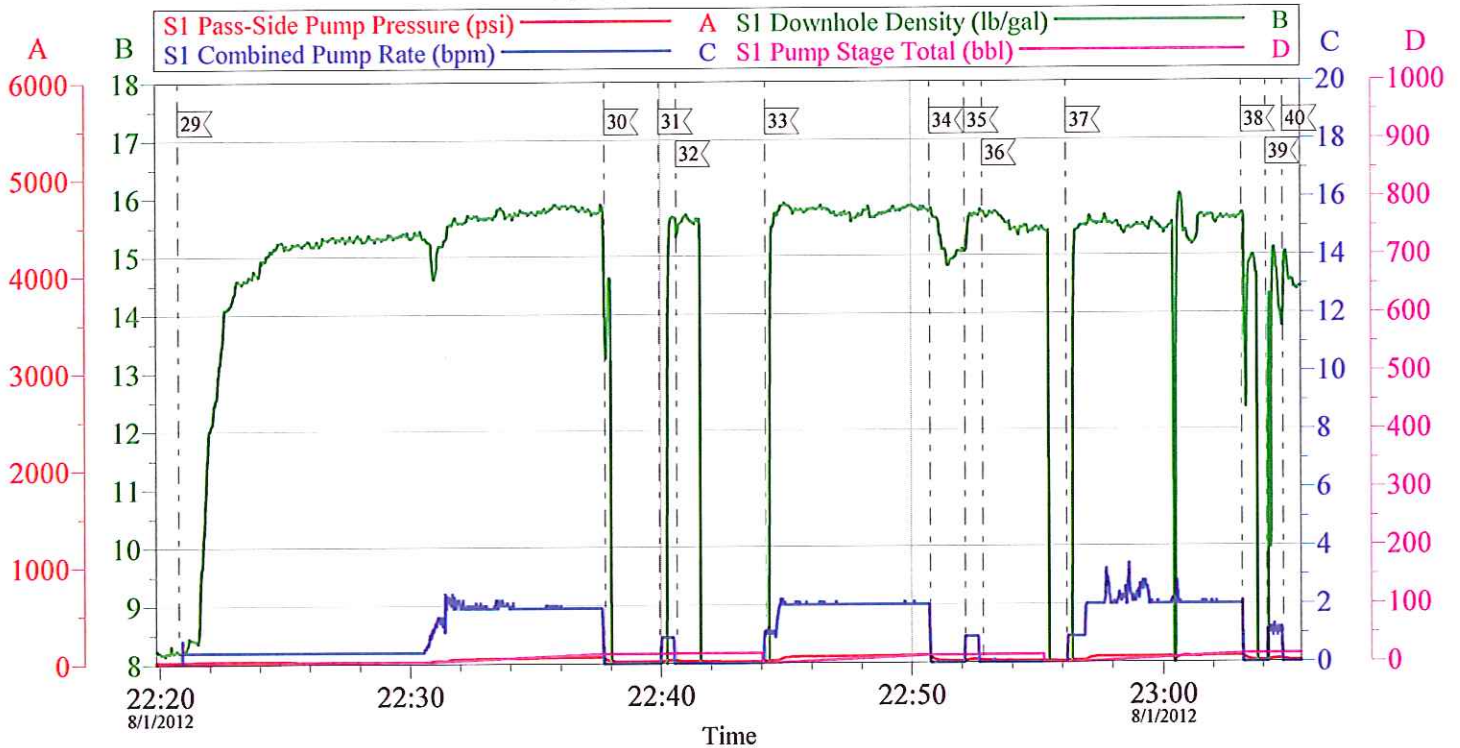
Customer: WPX
Well Description: RGU 413-25-198
Company Rep: ANDREW BRUNK

Job Date: 02-Aug-2012
Job Type: TOPOUT 2
Cement Supervisor: ED DEUSSEN

Sales Order #: 9704699
ADC Used: NO
Elite #3: RUSTY WEAVER

OptiCem v6.4.10
02-Aug-12 05:38

WPX - RGU TOPOUT - PREVIOUS 3 HOLES



| Local Event Log | | | | | |
|-----------------|---------------------|----------|----|----------|----------|
| 29 | START TOPOUT HOLE 1 | 22:20:46 | 30 | SHUTDOWN | 22:37:46 |
| 31 | TOP OFF | 22:39:56 | 32 | SHUTDOWN | 22:40:38 |
| 33 | TOPOUT HOLE 2 | 22:44:11 | 34 | SHUTDOWN | 22:50:44 |
| 35 | TOP OFF | 22:52:08 | 36 | SHUTDOWN | 22:52:50 |
| 37 | TOPOUT HOLE 3 | 22:56:11 | 38 | SHUTDOWN | 23:03:09 |
| 39 | TOP OFF | 23:04:08 | 40 | SHUTDOWN | 23:04:49 |

| | | |
|---------------------------|-------------------------------|------------------------|
| Customer: WPX | Job Date: 01-Aug-2012 | Sales Order #: 9704699 |
| Well Description: RGU | Job Type: SURFACE | ADC Used: YES |
| Company Rep: ANDREW BRUNK | Cement Supervisor: ED DEUSSEN | Elite #3: RUSTY WEAVER |

OptiCem v6.4.10
01-Aug-12 23:47