

**HALLIBURTON**

---

# **SUNDANCE ENERGY INC**

---

**MLD 11-22  
Wattenberg  
Weld County , Colorado**

## **Cement Production Casing** **30-Nov-2012**

### **Job Site Documents**

## Field Ticket

<b>Field Ticket Number:</b> 900037403		<b>Field Ticket Date:</b> Friday, November 30, 2012	
<b>Bill To:</b>  		<b>Job Name:</b> MLD <b>Order Type:</b> Streamline Order (ZOH) <b>Well Name:</b> MLD 11-22 <b>Company Code:</b> 1100 <b>Customer PO No.:</b> NA <b>Shipping Point:</b> Brighton, CO, USA <b>Sales Office:</b> Rocky Mountains BD <b>Well Type:</b> <b>Well Category:</b>	
<b>Ship To:</b> SUNDANCE ENERGY INC MLD, 11-22 2966095 UNKNOWN,			

Material	Description	QTY	UOM	Base Amt	Unit Amt	Gross Amount	Discount	Net Amount
7523	CMT PRODUCTION CASING BOM	1	JOB	0.00	0.00	0.00		0.00
16091	ZI - PUMPING CHARGE	1	EA	0.00	7,962.00	7,962.00	65%	2,786.70
	DEPTH	6845						
	FEET/METERS (FT/M)		FT					
432904	CMT, ROCKIES SG SETUP	1	EA			10,162.00	50.67%	5,012.70
432905	CMT, ROCKIES SG MILEAGE	58	MI			954.68	61.41%	368.45
	Number of Units	1						
432906	CMT, ROCKIES SG DELIVERY	1	TNM			5,770.19	63.35%	2,114.94
	NUMBER OF TONS	22						
528788	MUD FLUSH III	24	BBL	0.00	94.45	2,266.80	65%	793.38
452963	FRACCEM (TM) SYSTEM	150	SK			9,639.22	65.0%	3,373.73
101894003	ENHANCER 923	752	LB	0.00	1.05	789.60	65%	276.36
452981	EXTENDACEM (TM) SYSTEM	310	SK			15,996.48	65.0%	5,598.77
100003668	SUPER CBL	52	LB	0.00	72.35	3,762.20	65%	1,316.77
100003652	SALT,MORTON-PUREX-FINE	732	LB	0.00	0.44	322.08	65%	112.73
101985045	CHEM, CLA-WEB - TOTE	6	GAL	0.00	474.30	2,845.80	65%	996.03
<b>Halliburton Rep:</b> JONATHAN SNYDER				<b>Totals</b>	<b>USD</b>	<b>60,471.05</b>	<b>37,720.49</b>	<b>22,750.56</b>

Customer Agent:  
Halliburton Approval

GENE HUDSON

## Field Ticket

<b>Field Ticket Number:</b> 900037403	<b>Field Ticket Date:</b> Friday, November 30, 2012
<b>Bill To:</b>          	<b>Job Name:</b> MLD <b>Order Type:</b> Streamline Order (ZOH) <b>Well Name:</b> MLD 11-22 <b>Company Code:</b> 1100 <b>Customer PO No.:</b> NA <b>Shipping Point:</b> Brighton, CO, USA <b>Sales Office:</b> Rocky Mountains BD <b>Well Type:</b> <b>Well Category:</b>
<b>Ship To:</b> SUNDANCE ENERGY INC MLD, 11-22 2966095 UNKNOWN,	

Material	Description	QTY	UOM	Base Amt	Unit Amt	Gross Amount	Discount	Net Amount
----------	-------------	-----	-----	----------	----------	--------------	----------	------------

THIS OUTPUT DOES NOT INCLUDE TAXES. APPLICABLE SALES TAX WILL BE BILLED ON THE FINAL INVOICE.

CUSTOMER HEREBY ACKNOWLEDGES RECEIPT OF THE MATERIALS AND SERVICES DESCRIBED ABOVE AND ON THE ATTACHED DOCUMENTS.

X

FIELD TICKET TOTAL: USD

22,750.56

Customer Signature

Was our HSE performance satisfactory? Y or N  
(Health, Safety, Environment)

Were you satisfied with our Equipment? Y or N

Were you satisfied with our people? Y or N

Comments

--

## The Road to Excellence Starts with Safety

Sold To #: 344834	Ship To #: UNKNOWN	Quote #:	Sales Order #: 900037403
Customer: SUNDANCE ENERGY INC		Customer Rep: HUDSON, GENE	
Well Name: MLD	Well #: 11-22	API/UWI #: 05-123-36099	
Field: Wattenberg	City (SAP): UNKNOWN	County/Parish: Weld	State: Colorado
Lat: N 40.304 deg. OR N 40 deg. 18 min. 13.874 secs.		Long: W 104.994 deg. OR W -105 deg. 0 min. 20.858 secs.	
Contractor: Ensign	Rig/Platform Name/Num: 55		
Job Purpose: Cement Production Casing			
Well Type: Development Well	Job Type: Cement Production Casing		
Sales Person: AARON, WESLEY	Srvc Supervisor: SNYDER, JONATHAN	MBU ID Emp #: 435616	

### Job Personnel

HES Emp Name	Exp Hrs	Emp #	HES Emp Name	Exp Hrs	Emp #	HES Emp Name	Exp Hrs	Emp #
EDWARDS, MICHEAL H	4.5	522592	HALE, ROBERT E	4.5	470588	ROMERO, JOSEPH M	4.5	512137
SNYDER, JONATHAN Leroy	4.5	435616						

### Equipment

HES Unit #	Distance-1 way	HES Unit #	Distance-1 way	HES Unit #	Distance-1 way	HES Unit #	Distance-1 way
10025030	29 mile	11064535	29 mile	11362287C	29 mile	11518548	29 mile
11562562	29 mile						

### Job Hours

Date	On Location Hours	Operating Hours	Date	On Location Hours	Operating Hours	Date	On Location Hours	Operating Hours
11/30/2012	4.5	1.5						

**TOTAL** Total is the sum of each column separately

### Job

### Job Times

Formation Name	Formation Depth (MD)	Top	Bottom	Called Out	Date	Time	Time Zone
Form Type			BHST	On Location	30 - Nov - 2012	18:30	MST
Job depth MD	6845. ft		Job Depth TVD	7629. ft	Job Started	30 - Nov - 2012	20:39
Water Depth			Wk Ht Above Floor	4. ft	Job Completed	30 - Nov - 2012	21:53
Perforation Depth (MD)	From		To		Departed Loc	30 - Nov - 2012	23:00

### Well Data

Description	New / Used	Max pressure psig	Size in	ID in	Weight lbm/ft	Thread	Grade	Top MD ft	Bottom MD ft	Top TVD ft	Bottom TVD ft
Open Hole				7.875				581.	6893.		
Production Casing	Unknown		4.5	4.	11.6			.	6845.	.	
Surface Casing	Unknown		8.625	8.097	24.			.	581.	.	

### Tools and Accessories

Type	Size	Qty	Make	Depth	Type	Size	Qty	Make	Depth	Type	Size	Qty	Make
Guide Shoe					Packer					Top Plug			
Float Shoe					Bridge Plug					Bottom Plug			
Float Collar					Retainer					SSR plug set			
Insert Float										Plug Container			
Stage Tool										Centralizers			

### Miscellaneous Materials

Gelling Agt		Conc		Surfactant		Conc		Acid Type		Qty		Conc	%
Treatment Fld		Conc		Inhibitor		Conc		Sand Type		Size		Qty	

### Fluid Data

Stage/Plug #: 1	Fluid #	Stage Type	Fluid Name	Qty	Qty uom	Mixing Density lbm/gal	Yield ft <sup>3</sup> /sk	Mix Fluid Gal/sk	Rate bbl/min	Total Mix Fluid Gal/sk
-----------------	---------	------------	------------	-----	---------	------------------------	---------------------------	------------------	--------------	------------------------

1	Clay Web Water Spacer		20.00	bbl	8.4	.0	.0	.0	
2	MUD FLUSH III	MUD FLUSH III - SBM (528788)	24.00	bbl	8.4	.0	1000.0	5.0	
3	CalyWeb Water Spacer		10.00	bbl	8.4	.0	.0	.0	
4	Extendacem 11.3#	EXTENDACEM (TM) SYSTEM (452981)	310.0	sacks	11.3	2.46	14.12		14.12
	0.2 %	SUPER CBL, 50 LB PAIL (100003668)							
	3 %	SALT, 100 LB BAG (100003652)							
	14.12 Gal	FRESH WATER							
5	Fraccem 13.5#	FRACCEM (TM) SYSTEM (452963)	150.0	sacks	13.5	1.74	8.3	5.0	8.3
	5 lbm	ENHANCER 923, BULK (101894003)							
	8.3 Gal	FRESH WATER							
6	ClayWeb Water Displacement		106.00	bbl	8.34	.0	.0	7.0	
	2.5 gal/Mgal	CLA-WEB - TOTE (101985045)							
<b>Calculated Values</b>		<b>Pressures</b>		<b>Volumes</b>					
Displacement	106	Shut In: Instant		Lost Returns		Cement Slurry	181	Pad	
Top Of Cement	2387	5 Min		Cement Returns	0	Actual Displacement	106	Treatment	
Frac Gradient		15 Min		Spacers	54	Load and Breakdown		Total Job	
<b>Rates</b>									
Circulating	5	Mixing	6	Displacement	8	Avg. Job	6		
Cement Left In Pipe	Amount 0 ft	Reason							
Frac Ring # 1 @	ID	Frac ring # 2 @	ID	Frac Ring # 3 @	ID	Frac Ring # 4 @	ID		
The Information Stated Herein Is Correct				Customer Representative Signature					



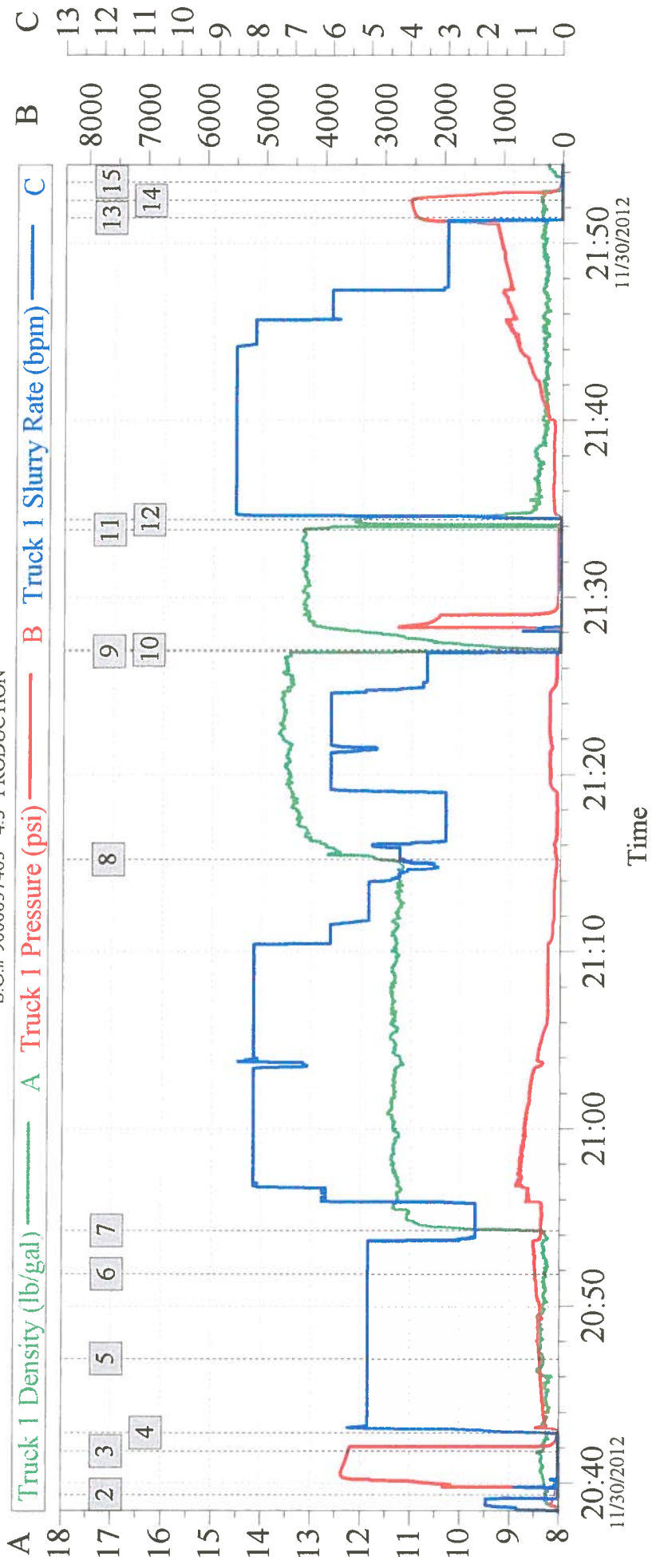
*The Road to Excellence Starts with Safety*

Sold To #: 344834		Ship To #: UNKNOWN		Quote #:		Sales Order #: 900037403	
Customer: SUNDANCE ENERGY INC				Customer Rep: HUDSON, GENE			
Well Name: MLD			Well #: 11-22		API/UWI #: 05-123-36099		
Field: Wattenberg		City (SAP): UNKNOWN		County/Parish: Weld		State: Colorado	
Legal Description:							
Lat: N 40.304 deg. OR N 40 deg. 18 min. 13.874 secs.				Long: W 104.994 deg. OR W -105 deg. 0 min. 20.858 secs.			
Contractor: Ensign			Rig/Platform Name/Num: 55				
Job Purpose: Cement Production Casing						Ticket Amount:	
Well Type: Development Well			Job Type: Cement Production Casing				
Sales Person: AARON, WESLEY			Srv Supervisor: SNYDER, JONATHAN			MBU ID Emp #: 435616	

Activity Description	Date/Time	Cht #	Rate bbl/ min	Volume bbl		Pressure psig		Comments
				Stage	Total	Tubing	Casing	
Arrive at Location from Service Center	11/30/2012 22:06							ARRIVED AND CONDUCTED A HAZARD HUNT AND FOUND NO HAZARDS THAT CONFLICT WITH US RIGGING UP EQUIPMENT.
Pre-Job Safety Meeting	11/30/2012 22:06							HELD A SAFETY MEETING WITH ALL EMPLOYEES AND ALL THIRD PARTY PERSONEL PRIOR TO PUMPING THE CEMENT JOB.
Start Job	11/30/2012 22:06							
Test Lines	11/30/2012 22:06							PRESSURE TEST LINES TO 3463 PSI
Pump Spacer 1	11/30/2012 22:06		5	20			293.3	W/ RIG WATER
Pump Spacer 2	11/30/2012 22:06		5	24			347.3	RIG WATER MIXED W/ MUD FLUSH III
Pump Spacer 1	11/30/2012 22:06		5	10			403.3	W/ RIG WATER
Pump Lead Cement	11/30/2012 22:06		8	135			333.3	310 SKS EXTENDACEM B2 MIXED @ 11.3 PPG W/ RIG WATER
Pump Tail Cement	11/30/2012 22:06		6	46			160.3	150 SKS FRACCCEM 923 MIXED @ 13.5 PPG W/ RIG WATER
Shutdown	11/30/2012 22:06							
Clean Lines	11/30/2012 22:06							

## Cementing Job Log

Activity Description	Date/Time	Cht #	Rate bbl/ min	Volume bbl		Pressure psig		Comments
				Stage	Total	Tubing	Casing	
Drop Top Plug	11/30/2012 22:06							PLUG PRELOADED, DROPPED PLUG WHILE OPERATOR WAS CLEANING PUMPS AND LINES
Pump Displacement	11/30/2012 22:06		8	106			633.3	RIG WATER MIXED W/ CLAY WEB III
Bump Plug	11/30/2012 22:06		3				1093. 3	
Check Floats	11/30/2012 22:06						2537. 3	FLOATS HELD, GOOD RETURNS THROUGHOUT THE JOB, WE GOT 1 BBL OF WATER BACK IN THE DISPLACEMENT TANKS WHEN WE CHECKED FLOATS.
End Job	11/30/2012 22:06							
Pre-Rig Down Safety Meeting	11/30/2012 22:06							HELD SAFETY MEETING WITH ALL EMPLOYEES PRIOR TO RIGGING DOWN AND DISCUSSED ALL HAZARDS WHILE RIGGING DOWN EQUIPMENT.
Depart Location for Service Center or Other Site	11/30/2012 22:06							HELD SAFETY MEETING PRIOR TO LEAVING LOCATION AND DISCUSSED ALL POTENTIAL HAZARDS WHILE DRIVING BACK TO THE SERVICE CENTER.



Global Event Log			
Intersection	TID	TIP	
2 Start Job	20:39:21	8.245	56.22
3 Test Lines	20:41:47	8.363	3544
4 Pump Water Spacer	20:42:50	8.250	19.00
5 Pump Mud Flush III Spacer	20:47:01	8.307	318.0
6 Pump Water Spacer	20:51:49	8.287	395.7
7 Pump Lead Cement @ 11.3#	20:54:16	8.596	303.2
8 Pump Tail Cement @ 13.5#	21:15:12	11.65	66.21
9 Shutdown	21:26:56	8.116	54.42
10 Clean Lines	21:27:01	7.464	38.17
11 Drop Top Plug	21:33:48	13.14	47.00
12 Pump Displacement	21:34:22	12.11	22.00
13 Bump Plug	21:51:26	8.392	2433
14 Check Floats	21:52:25	8.409	2552
15 End Job	21:53:27	7.629	21.71



# HALLIBURTON

## SALES ORDER

Halliburton Energy Services, Inc.

**Sales Order Number: 900029389**

**Sales Order Date: November 26, 2012**

**SOLD TO:**

SUNDANCE ENERGY INC  
633 17TH ST STE 1950  
DENVER CO 80202  
USA

**Rig Name:**

Well/Rig Name: SUNDANCE MLD 11-22,WELD  
Company Code: 1100  
Customer P.O. No.: n/a  
Shipping Point: Brighton, CO, USA  
Sales Office: Rocky Mountains BD  
Well Type: Gas  
Well Category: Development  
Service Location: 0201  
Payment Terms: Net 30 days from Invoice date  
Ticket Type: Services  
Order Type: ZOH

**SHIP TO:**

SUNDANCE MLD 11-22,WELD  
MLD 11-22  
S22 4N 68W  
BERTHOUD CO 80513  
USA

Material	Description	QTY	UOM	Base Amount	Unit Amount	Gross Amount	Discount	Net Amount
374609	CMT CASING EQUIPMENT BOM CMT CASING EQUIPMENT BOM /	1.00	JOB					
100004879	SHOE,FLT,4-1/2 8RD,K55,2-3/4 SHOE, FLOAT, 4-1/2 8RD, K- 55, 2-3/4 / SUPER SEAL II VALVE	1.000	EA		599.00	599.00	389.35-	209.65
100004752	CLR,FLT,4-1/2 8RD 9.5- COLLAR,FLOAT, 4-1/2 8RD 9.5-13.5 / LBS/FT, 2-3/4 SUPER SEAL II VALVE	1.000	EA		700.00	700.00	455.00-	245.00
100004473	CTRZR ASSY,API,4 1/2 CSG X 7 CENTRALIZER ASSEMBLY, API, 4 1/2 CASING / X 7 7/8 HOLE, HINGED, WITH WELDED BOWS	45.000	EA		126.00	5,670.00	3,685.50-	1,984.50
101241019	PLUG,CMTG,TOP,4-1/2,HWE,3.65 PLUG, CEMENTING, TOP, 4 1/2, HWE, 3.65 MIN/4.14 MAX CASING ID, / SYNTHETIC SERVICE	1.000	EA		186.00	186.00	120.90-	65.10
100005045	KIT,HALL WELD-A	1.000	EA		74.30	74.30	48.30-	26.00

# HALLIBURTON

Halliburton Energy Services, Inc.

**Sales Order Number: 900029389**

**Sales Order Date: November 26, 2012**

Material	Description	QTY	UOM	Base Amount	Unit Amount	Gross Amount	Discount	Net Amount
100004595	BSKT,CEM,4 1/2 CSG X 6 1/4,8 806.70020 / BASKET - CEMENT - 4-1/2 CSG X 6-1/4 - / 8-3/4 HOLE - SLIP-ON - STEEL VANE - / UNIVERSAL BOW	2.000	EA		390.00	780.00	507.00-	273.00
2	MILEAGE FOR CEMENTING CREW 000-119 Number of Units	58.000 1	MI unit		5.76	334.08	217.15-	116.93
86954	Z1 FUEL SURCHG-CARS/PICKUPS<1 1/2TON FUEL SURCHG-CARS/PICKUPS<1 1/2TON/PER/MI Number of Units	58.000 1	MI unit		0.23	13.34		13.34
<b>SALES ORDER AMOUNT</b>						<b>8,356.72</b>	<b>5,423.20-</b>	
<b>SALES ORDER TOTAL</b> Sales Tax - State						<b>8,356.72</b>	<b>5,423.20-</b>	<b>2,933.52</b> <b>81.29</b> <b>3,014.81</b> <b>US Dollars</b>
Total Weight: 429.10 LB								

**INVOICE INSTRUCTIONS:**

Operator Name:  
Customer Agent:

Halliburton Approval: X \_\_\_\_\_  
Customer Signature: X \_\_\_\_\_

# HALLIBURTON

## Field Ticket

<b>Field Ticket Number:</b> 900025724		<b>Field Ticket Date:</b> Saturday, November 24, 2012	
<b>Bill To:</b>  		<b>Job Name:</b> MLD <b>Order Type:</b> Streamline Order (ZOH) <b>Well Name:</b> MLD 12-22 <b>Company Code:</b> 1100 <b>Customer PO No.:</b> NA <b>Shipping Point:</b> Brighton, CO, USA <b>Sales Office:</b> Rocky Mountains BD <b>Well Type:</b> Gas <b>Well Category:</b> Development	
<b>Ship To:</b> SUNDANCE MLD 12-22,WELD MLD 12-22 2965121 S22 T4N R68W BERTHOUD, CO 80513			

Item #	Material	Description	Ref #	QTY	UOM	Base Amt	Unit Amt	Gross Amount	Discount	Net Amount
10	7523	CMT PRODUCTION CASING BOM		1	JOB	0.00	0.00	0.00		0.00
20	16091	ZI - PUMPING CHARGE		1	EA	0.00	9,081.00	9,081.00	65%	3,178.35
		DEPTH		7165						
		FEET/METERS (FT/M)			FT					
30	432904	CMT, ROCKIES SG SETUP		1	EA			10,162.00	50.67%	5,012.70
140	432905	CMT, ROCKIES SG MILEAGE		56	MI			1,257.20	61.7%	481.51
		Number of Units		1						
190	432906	CMT, ROCKIES SG DELIVERY		1	TNM			6,003.87	63.38%	2,198.47
		NUMBER OF TONS		23.2						
230	528788	MUD FLUSH III		24	BBL	0.00	94.45	2,266.80	65%	793.38
250	452963	FRACCEM (TM) SYSTEM		160	SK			10,132.85	65.0%	3,546.51
340	101894003	ENHANCER 923		800	LB	0.00	1.05	840.00	65%	294.00
350	101985045	CHEM, CLA-WEB - TOTE		7	GAL	0.00	474.30	3,320.10	65%	1,162.03
360	452981	EXTENDACEM (TM) SYSTEM		325	SK			16,624.31	65.0%	5,818.50
440	100003668	SUPER CBL		52	LB	0.00	72.35	3,762.20	65%	1,316.77
450	100003652	SALT,MORTON-PUREX-FINE		768	LB	0.00	0.44	337.92	65%	118.27
460	100007955	SHOE-FLT- 4 1/2 8RD - HI-PORT		1	EA	0.00	918.00	918.00	65%	321.30
480	100004481	CTRZR ASSY,TURBO,API,4 1/2 CSG X 7 7/8		15	EA	0.00	166.00	2,490.00	65%	871.50
490	100004622	CLAMP - LIMIT - 4-1/2 - HINGED -		1	EA	0.00	44.20	44.20	65%	15.47
530	100004473	CENTRALIZER ASSY - API - 4-1/2 CSG X		15	EA	0.00	126.00	1,890.00	65%	661.50
540	100008028	SUGAR, GRANULATED, IMPERIAL		50	LB	0.00	6.44	322.00	65%	112.70

# HALLIBURTON

## Field Ticket

<b>Field Ticket Number:</b> 900025724		<b>Field Ticket Date:</b> Saturday, November 24, 2012	
<b>Bill To:</b> <div style="border: 1px solid black; height: 80px; width: 100%;"></div>		<b>Job Name:</b> MLD <b>Order Type:</b> Streamline Order (ZOH) <b>Well Name:</b> MLD 12-22 <b>Company Code:</b> 1100 <b>Customer PO No.:</b> NA <b>Shipping Point:</b> Brighton, CO, USA <b>Sales Office:</b> Rocky Mountains BD <b>Well Type:</b> Gas <b>Well Category:</b> Development	
<b>Ship To:</b> SUNDANCE MLD 12-22,WELD MLD 12-22 2965121 S22 T4N R68W BERTHOUD, CO 80513			

Item #	Material	Description	Ref #	QTY	UOM	Base Amt	Unit Amt	Gross Amount	Discount	Net Amount
		<b>Halliburton Rep:</b>	BRANDON NIELSON		<b>Totals</b>		<b>USD</b>	<b>69,452.45</b>	<b>43,549.49</b>	<b>25,902.96</b>
		<b>Customer Agent:</b>	GENE HUDSON							
<b>Halliburton Approval</b>										

THIS OUTPUT DOES NOT INCLUDE TAXES. APPLICABLE SALES TAX WILL BE BILLED ON THE FINAL INVOICE.  
 CUSTOMER HEREBY ACKNOWLEDGES RECEIPT OF THE MATERIALS AND SERVICES DESCRIBED ABOVE AND ON THE ATTACHED DOCUMENTS.

X \_\_\_\_\_

Customer Signature

Was our HSE performance satisfactory? Y or N      Were you satisfied with our Equipment? Y or N      Were you satisfied with our people? Y or N

(Health, Safety, Environment)

Comments

FIELD TICKET TOTAL: USD

25,902.96