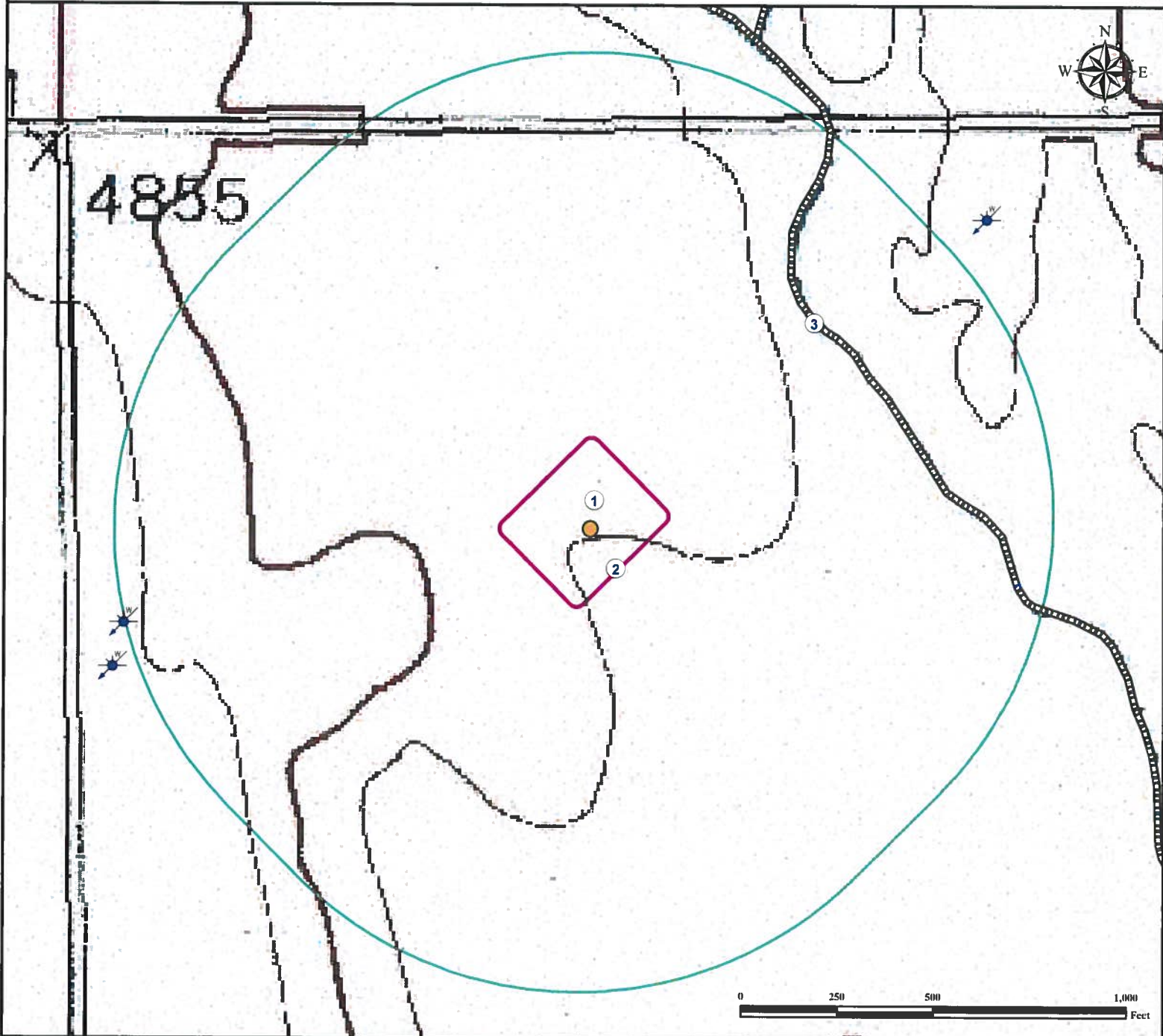


Hydrology Map






BUSYGULLY 13-54-12-3

NE¼ NW¼ SECTION 12, TOWNSHIP 13 SOUTH, RANGE 54 WEST OF THE 6TH PRINCIPAL MERIDIAN



1. Proposed Well BUSYGULLY 13-54-12-3.
2. Operational Disturbance Area.
3. Stream is $\pm 793'$ NE.

Legend

- | | | | | | |
|---|---------------|---|--------------|---|------------------|
|  | Proposed Well |  | Stream |  | Disturbance Area |
|  | Water Well |  | 1000' Radius | | |

Reference Location

** All Measurements are Made from Reference Well BUSYGULLY 13-54-12-3 **

Lat: 38.933676° Long: -103.399755° (NAD 83)
Elevation: 4843 Feet



Use our resources to find yours!
www.petro-fs.com
(303) 928-7128

Field Date: 10/17/2012
Drafting Date: 10/19/2012
Drafter: PAH
Revision:

Data Sources:

- TOPO courtesy of USGS
- Stream courtesy of NHD

Prepared for:

PINE RIDGE OIL & GAS, LLC