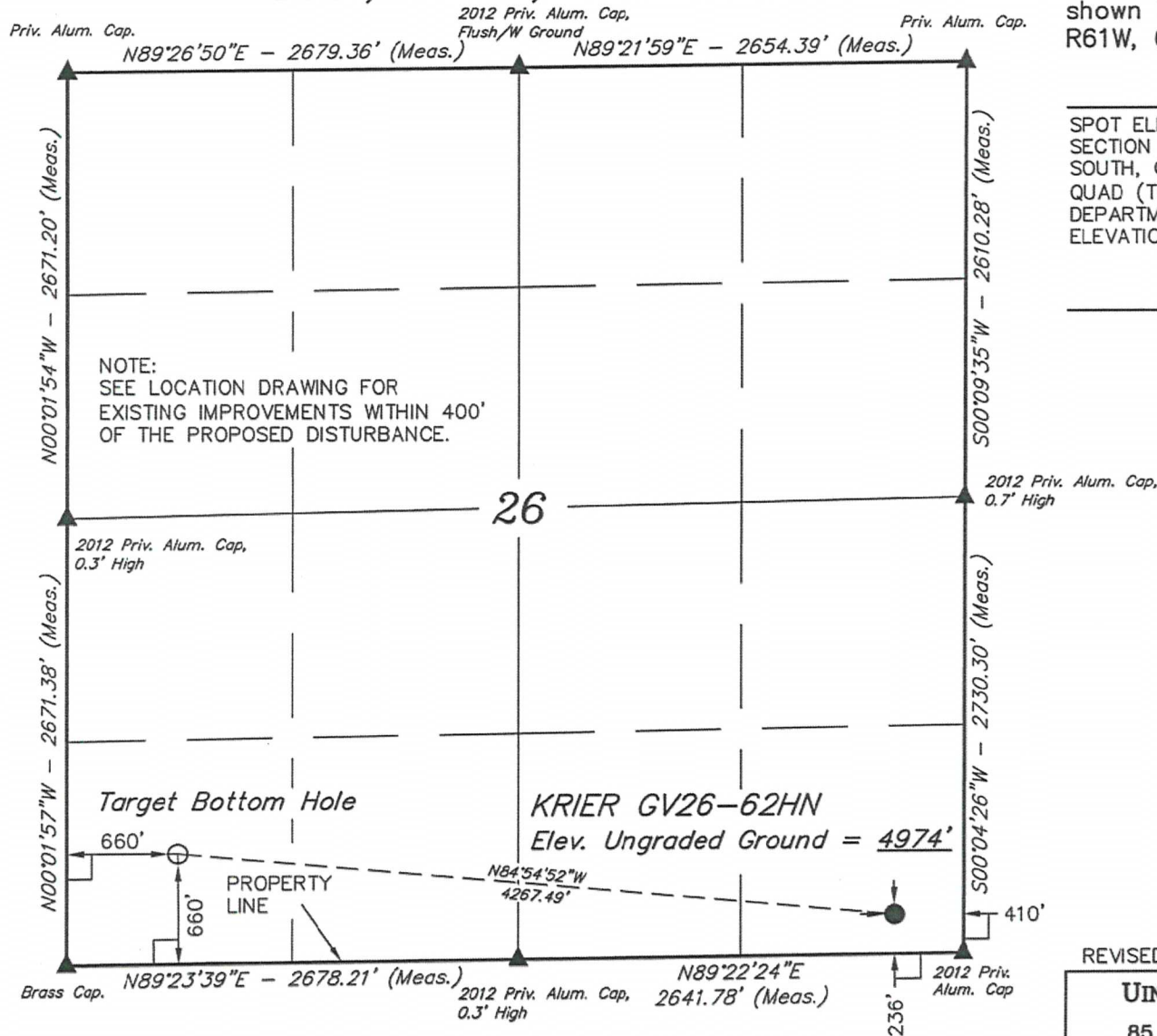


# WELL LOCATION PLAT T9N, R61W, 6th P.M.



## LEGEND:

- └─┘ = 90° SYMBOL
- = PROPOSED WELL HEAD.
- ▲ = SECTION CORNERS LOCATED.

## FEATURE TABLE

EXISTING FEATURE	DIRECTION	LENGTH
PROPERTY LINE	SOUTH	236'

PDOP = 1.3

NAD 83 (TARGET BOTTOM HOLE)	NAD 83 (SURFACE LOCATION)
LATITUDE = 40°42'52.37" (40.714547)	LATITUDE = 40°42'48.64" (40.713511)
LONGITUDE = 104°10'46.65" (104.179625)	LONGITUDE = 104°09'51.46" (104.164294)

## NOBLE ENERGY, INC.

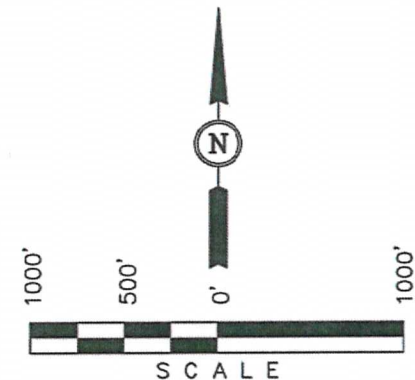
Well location, KRIER GV26-62HN, located as shown in the SE 1/4 SE 1/4 of Section 26, T9N, R61W, 6th P.M., Weld County, Colorado.

## BASIS OF ELEVATION

SPOT ELEVATION LOCATED AT THE NORTHEAST CORNER OF SECTION 2, T9N, R61W, 6th P.M., TAKEN FROM THE GROVER SOUTH, QUADRANGLE, COLORADO, WELD COUNTY, 7.5 MINUTE QUAD (TOPOGRAPHICAL MAP) PUBLISHED BY THE UNITED STATES DEPARTMENT OF THE INTERIOR, GEOLOGICAL SURVEY. SAID ELEVATION IS MARKED AS BEING 5043 FEET.

## BASIS OF BEARINGS

BASIS OF BEARINGS IS A G.P.S. OBSERVATION.



## CERTIFICATE

THIS IS TO CERTIFY THAT THE ABOVE PLAT WAS PREPARED FROM FIELD NOTES OF ACTUAL SURVEYS MADE BY ME OR UNDER MY SUPERVISION AND THAT THE SAME ARE TRUE AND CORRECT TO THE BEST OF MY KNOWLEDGE AND BELIEF.

REGISTERED LAND SURVEYOR  
REGISTRATION NO. 17492  
STATE OF COLORADO  
09-19-12

REVISED: 09-19-12 J.M.H.

**UINTAH ENGINEERING & LAND SURVEYING**  
85 SOUTH 200 EAST - VERNAL, UTAH 84078  
(435) 789-1017

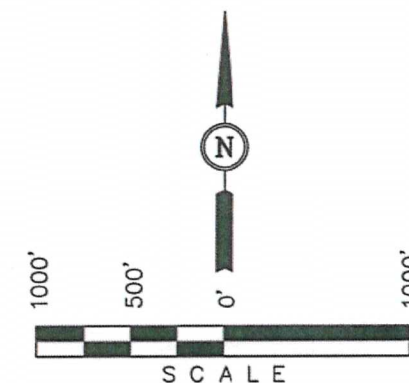
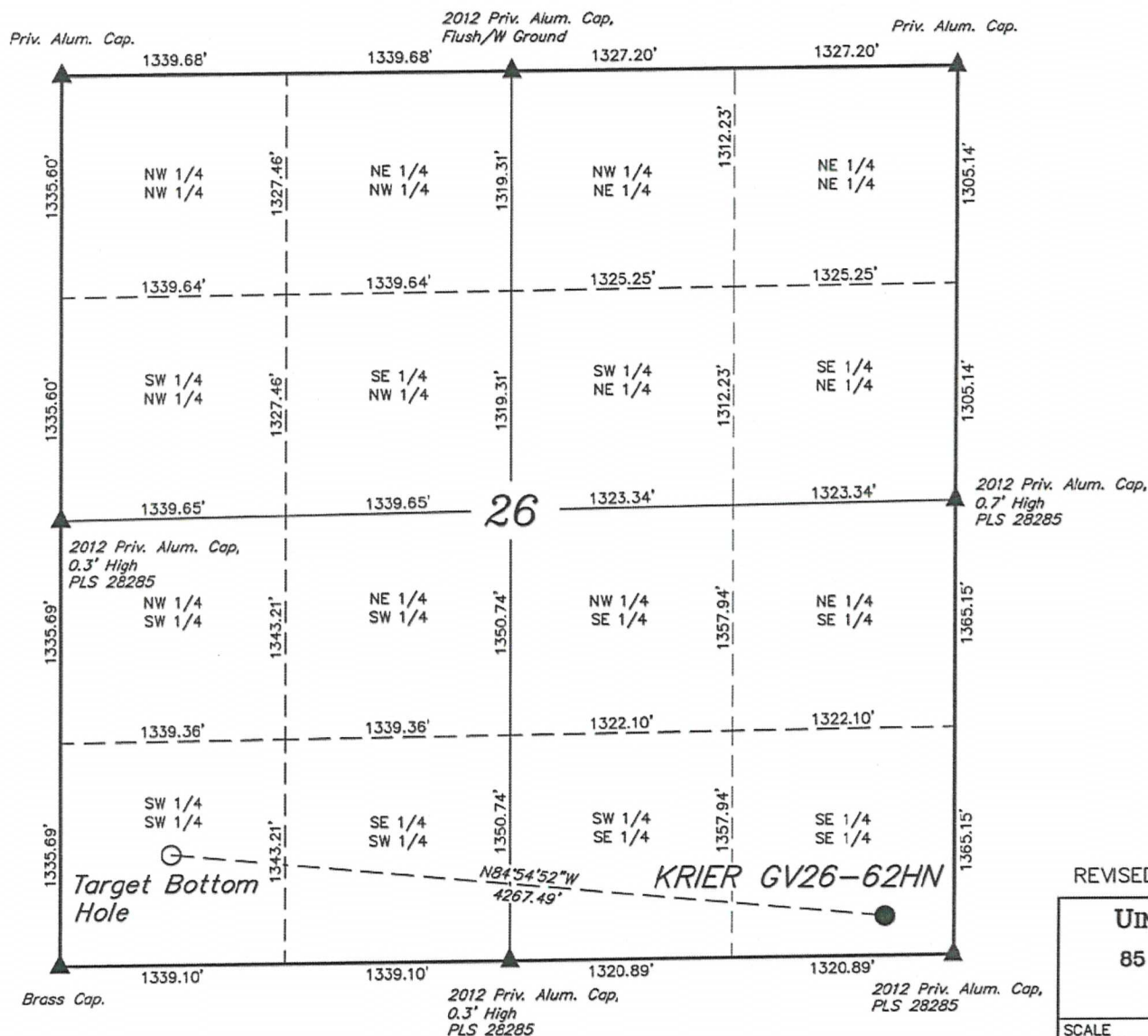
SCALE 1" = 1000'	DATE SURVEYED: 5-30-12	DATE DRAWN: 07-10-12
PARTY LOREN SHANKS, B.D.H.	REFERENCES G.L.O. PLAT	
WEATHER WARM	FILE NOBLE ENERGY, INC.	

# SITE SKETCH

## T9N, R61W, 6th P.M.

NOBLE ENERGY, INC.

Well location, KRIER GV26-62HN, located as shown in the SE 1/4 SE 1/4 of Section 26, T9N, R61W, 6th P.M., Weld County, Colorado.



### LEGEND:

- ▲ = SECTION CORNERS LOCATED.
- = TARGET BOTTOM HOLE
- = ABANDONED WELLS
- = SURFACE LOCATION

REVISED: 09-19-12 J.M.H.

UINTAH ENGINEERING & LAND SURVEYING  
85 SOUTH 200 EAST - VERNAL, UTAH 84078  
(435) 789-1017

SCALE 1" = 1000'	DATE SURVEYED: 05-30-12	DATE DRAWN: 07-10-12
PARTY LOREN SHANKS B.D.H.	REFERENCES G.L.O. PLAT	
WEATHER WARM	FILE NOBLE ENERGY, INC.	

NO WELLS WITHIN THIS SECTION