

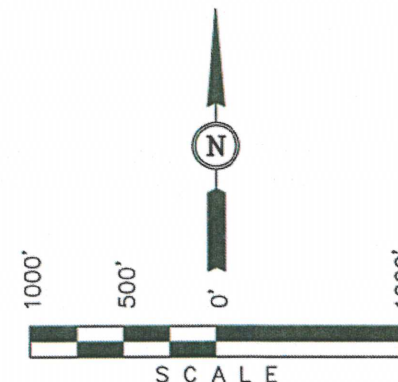
T9N, R61W, 6th P.M.

NOBLE ENERGY, INC.

Well location, KRIER GV26-62HN & KRIER PC
GV35-68HN located as shown in the SE 1/4 SE
1/4 of Section 26, T9N, R61W, 6th P.M., Weld
County, Colorado.

BASIS OF BEARINGS

BASIS OF BEARINGS IS A G.P.S. OBSERVATION.



LEGEND:

- = PROPOSED WELL HEAD.
 ▲ = SECTION CORNERS LOCATED.
 ○ = TARGET BOTTOM HOLE

REVISÉD: 09-19-12 J.M.H.

UINTAH ENGINEERING & LAND SURVEYING
85 SOUTH 200 EAST - VERNAL, UTAH 84078
(435) 789-1017

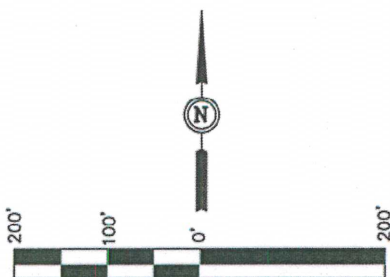
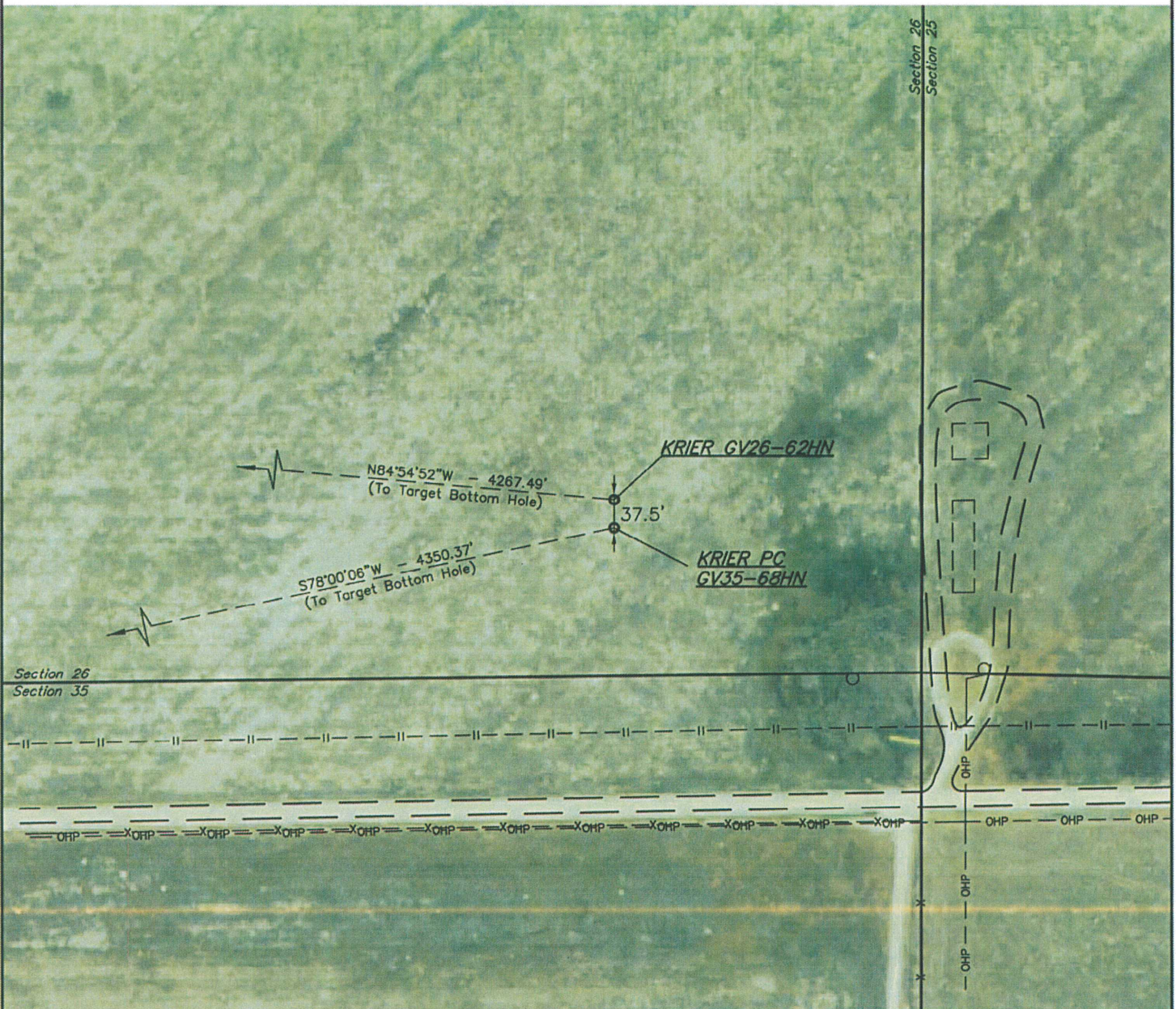
SCALE 1" = 1000'	DATE SURVEYED: 05-30-12	DATE DRAWN: 07-10-12
PARTY L.S. B.D.H.	REFERENCES G.L.O. PLAT	
WEATHER WARM	FILE NOBLE ENERGY, INC.	

NOBLE ENERGY, INC.

MULTI-WELL PLAN

KRIER GV26-62HN & KRIER PC GV35-68HN
SECTION 26, T9N, R61W, 6th P.M.

DATE: 07-10-12
DRAWN BY: B.D.H.
REV: 09-26-12 J.M.H.



PAD DETAILS:
WELL HEAD SPACING = 37.5'

UINTAH ENGINEERING & LAND SURVEYING
85 So. 200 East * Vernal, Utah 84078 * (435) 789-1017