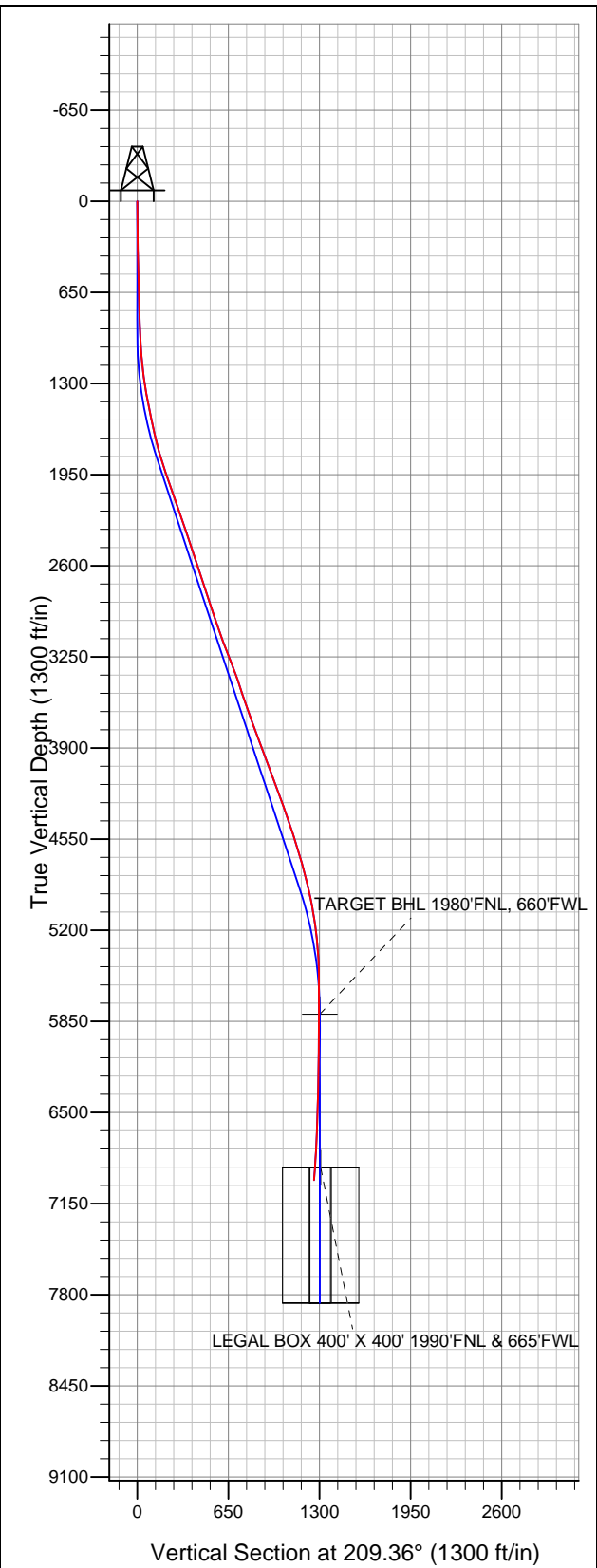


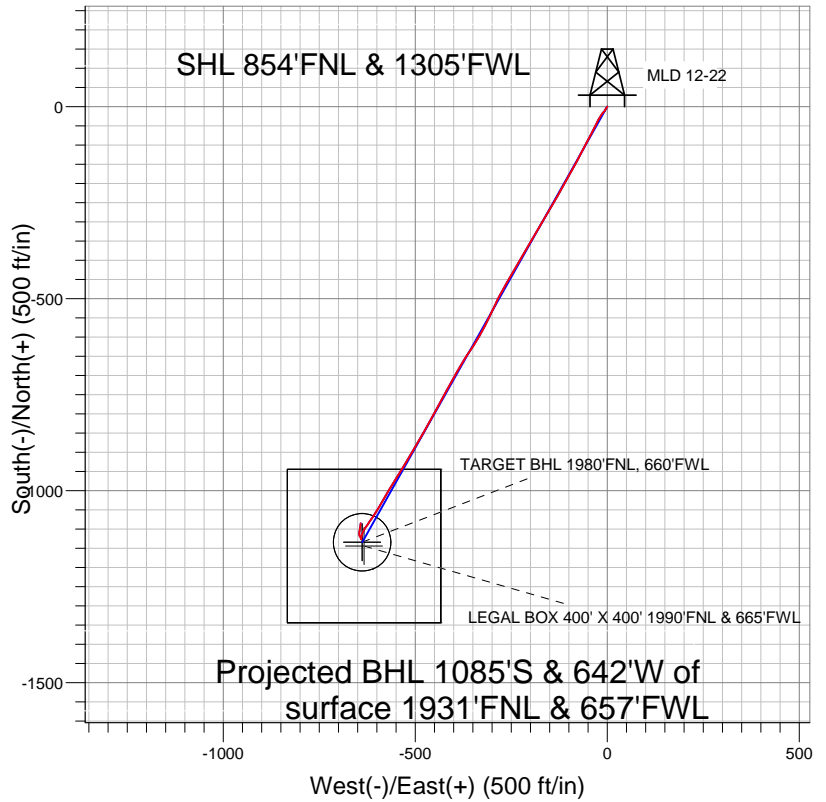


Well Name: MLD 12-22

Surface Location: MLD 5 Pad Sec.22-T4N-R68W
North American Datum 1983 US State Plane 1983 Colorado Northern Zone
Ground Elevation: 4877.0
+N/-S +E/-W Northing Easting Latitude Longitude Slot
0.0 0.0 1353937.82 3141082.66 40.303855 -104.994153
Original Well Elev WELL @ 4890.0ft (Original Well Elev)



Sundance Energy, Weld County, CO



LEGEND

- MLD 12-22, Wellbore #1, Plan #2 (11-13-12) R V0
- Wellbore #1
- Survey #1

Final Survey Plot

Projected Final Survey -
7180'MD & 6982'TVD @ 1261'VS
4.7 deg Inc 8.4 deg AZ

Project: SEC.22-T4N-R68W
Site: MLD 5 Pad Sec.22-T4N-R68W
Well: MLD 12-22
Plan: Wellbore #1



Sundance Energy, Weld County, CO

SEC.22-T4N-R68W

MLD 5 Pad Sec.22-T4N-R68W

MLD 12-22

Wellbore #1

Survey: Survey #1

Standard Survey Report

26 November, 2012

Company:	Sundance Energy, Weld County, CO	Local Co-ordinate Reference:	Well MLD 12-22
Project:	SEC.22-T4N-R68W	TVD Reference:	WELL @ 4890.0ft (Original Well Elev)
Site:	MLD 5 Pad Sec.22-T4N-R68W	MD Reference:	WELL @ 4890.0ft (Original Well Elev)
Well:	MLD 12-22	North Reference:	True
Wellbore:	Wellbore #1	Survey Calculation Method:	Minimum Curvature
Design:	Wellbore #1	Database:	Landmark

Survey

Measured Depth (ft)	Inclination (°)	Azimuth (°)	Vertical Depth (ft)	+N/-S (ft)	+E/-W (ft)	Vertical Section (ft)	Dogleg Rate (°/100ft)	Build Rate (°/100ft)	Turn Rate (°/100ft)
1,483.0	10.90	209.40	1,478.3	-72.6	-42.7	84.2	1.10	0.97	2.98
1,608.0	12.60	205.50	1,600.7	-95.2	-54.4	109.6	1.50	1.36	-3.12
1,733.0	13.90	208.30	1,722.4	-120.7	-67.4	138.3	1.16	1.04	2.24
1,858.0	17.10	210.10	1,842.8	-149.9	-83.7	171.7	2.59	2.56	1.44
1,982.0	19.80	207.80	1,960.4	-184.2	-102.7	210.9	2.25	2.18	-1.85
2,107.0	18.60	208.70	2,078.5	-220.4	-122.1	252.0	0.99	-0.96	0.72
2,232.0	19.30	210.90	2,196.7	-255.6	-142.3	292.6	0.80	0.56	1.76
2,357.0	19.30	210.60	2,314.7	-291.1	-163.4	333.9	0.08	0.00	-0.24
2,481.0	18.00	211.10	2,432.2	-325.2	-183.7	373.5	1.06	-1.05	0.40
2,606.0	18.70	210.60	2,550.8	-359.0	-203.9	412.9	0.57	0.56	-0.40
2,731.0	18.20	209.20	2,669.4	-393.3	-223.6	452.4	0.53	-0.40	-1.12
2,856.0	18.40	210.80	2,788.1	-427.3	-243.3	491.6	0.43	0.16	1.28
2,980.0	18.60	209.40	2,905.7	-461.3	-263.0	531.0	0.39	0.16	-1.13
3,105.0	18.20	208.00	3,024.3	-495.9	-281.9	570.4	0.48	-0.32	-1.12
3,230.0	21.00	204.40	3,142.0	-533.5	-300.4	612.3	2.44	2.24	-2.88
3,355.0	21.40	207.60	3,258.6	-574.1	-320.2	657.4	0.98	0.32	2.56
3,480.0	20.10	212.20	3,375.5	-612.5	-342.2	701.6	1.67	-1.04	3.68
3,604.0	18.10	213.80	3,492.6	-646.6	-364.3	742.1	1.67	-1.61	1.29
3,729.0	19.40	210.90	3,611.0	-680.5	-385.7	782.2	1.28	1.04	-2.32
3,854.0	20.30	207.20	3,728.6	-717.6	-406.3	824.7	1.24	0.72	-2.96
3,979.0	20.00	208.30	3,845.9	-755.7	-426.4	867.7	0.39	-0.24	0.88
4,103.0	20.40	209.90	3,962.3	-793.1	-447.2	910.5	0.55	0.32	1.29
4,228.0	20.70	209.70	4,079.3	-831.2	-469.0	954.4	0.25	0.24	-0.16
4,353.0	20.70	209.00	4,196.3	-869.7	-490.6	998.6	0.20	0.00	-0.56
4,478.0	19.90	211.10	4,313.5	-907.3	-512.3	1,041.9	0.87	-0.64	1.68
4,602.0	18.80	211.60	4,430.5	-942.4	-533.7	1,083.0	0.90	-0.89	0.40
4,727.0	17.90	211.30	4,549.1	-975.9	-554.3	1,122.3	0.72	-0.72	-0.24
4,852.0	16.30	211.10	4,668.6	-1,007.4	-573.3	1,159.1	1.28	-1.28	-0.16
4,977.0	14.50	209.90	4,789.1	-1,036.0	-590.2	1,192.2	1.46	-1.44	-0.96
5,101.0	12.70	213.20	4,909.6	-1,060.8	-605.4	1,221.4	1.58	-1.45	2.66
5,226.0	11.10	215.00	5,031.9	-1,082.2	-619.8	1,247.1	1.31	-1.28	1.44
5,351.0	7.80	212.90	5,155.2	-1,099.2	-631.3	1,267.5	2.65	-2.64	-1.68
5,476.0	5.90	199.00	5,279.3	-1,112.4	-638.0	1,282.3	2.01	-1.52	-11.12
5,600.0	3.30	190.20	5,402.9	-1,121.9	-640.7	1,291.9	2.17	-2.10	-7.10
5,725.0	0.60	186.90	5,527.9	-1,126.1	-641.4	1,295.9	2.16	-2.16	-2.64
5,850.0	0.40	74.90	5,652.8	-1,126.6	-641.1	1,296.2	0.67	-0.16	-89.60
5,997.1	0.09	302.15	5,800.0	-1,126.4	-640.7	1,295.9	0.32	-0.21	-90.22
TARGET BHL 1980'FNL, 660'FWL									
6,099.0	0.40	271.60	5,901.8	-1,126.4	-641.1	1,296.0	0.32	0.30	-30.00
6,224.0	1.10	14.10	6,026.8	-1,125.2	-641.3	1,295.1	1.00	0.56	82.00
6,349.0	1.00	350.70	6,151.8	-1,123.0	-641.1	1,293.1	0.35	-0.08	-18.72
6,474.0	2.30	305.50	6,276.8	-1,120.4	-643.4	1,291.9	1.40	1.04	-36.16
6,599.0	2.10	351.90	6,401.7	-1,116.7	-645.7	1,289.9	1.39	-0.16	37.12
6,723.0	3.00	0.90	6,525.6	-1,111.2	-646.0	1,285.2	0.79	0.73	7.26
6,848.0	2.20	7.00	6,650.4	-1,105.6	-645.6	1,280.1	0.68	-0.64	4.88
6,973.0	3.10	15.50	6,775.3	-1,099.9	-644.4	1,274.6	0.78	0.72	6.80
7,088.7	4.30	9.44	6,890.8	-1,092.6	-642.9	1,267.5	1.09	1.04	-5.24
LEGAL BOX 400' X 400' 1990'FNL & 665'FWL									
7,088.8	4.30	9.44	6,890.9	-1,092.6	-642.9	1,267.5	0.00	0.00	0.00
TARGET CIRCLE 1980'FNL & 660'FWL									
7,098.0	4.40	9.10	6,900.0	-1,091.9	-642.8	1,266.8	1.10	1.07	-3.73
7,134.0	4.70	8.40	6,935.9	-1,089.1	-642.4	1,264.2	0.85	0.83	-1.94
7,180.0	4.70	8.40	6,981.8	-1,085.4	-641.8	1,260.6	0.00	0.00	0.00

Company:	Sundance Energy, Weld County, CO	Local Co-ordinate Reference:	Well MLD 12-22
Project:	SEC.22-T4N-R68W	TVD Reference:	WELL @ 4890.0ft (Original Well Elev)
Site:	MLD 5 Pad Sec.22-T4N-R68W	MD Reference:	WELL @ 4890.0ft (Original Well Elev)
Well:	MLD 12-22	North Reference:	True
Wellbore:	Wellbore #1	Survey Calculation Method:	Minimum Curvature
Design:	Wellbore #1	Database:	Landmark

Checked By: _____ Approved By: _____ Date: _____