

NOBLE ENERGY, INC.

BASIS OF BEARINGS

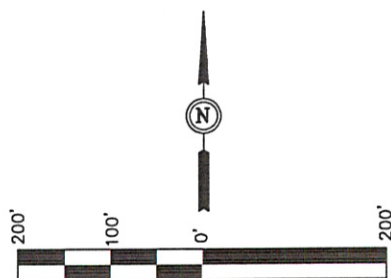
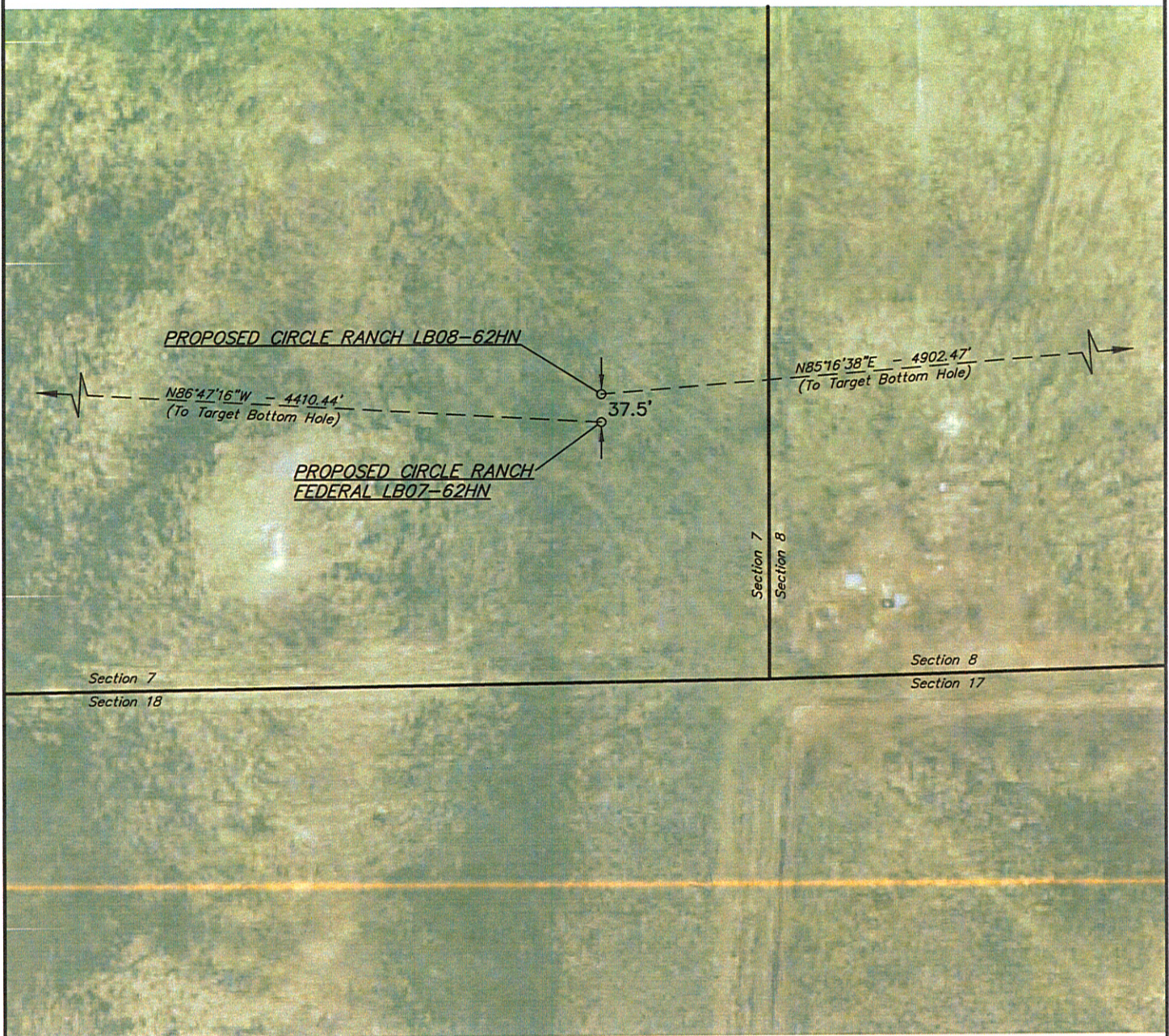
SCALE 1" = 2000'	DATE SURVEYED: 06-21-12	DATE DRAWN: 07-31-12
PARTY DARREN SHANKS C.T. S.R.L.	REFERENCES G.L.O. PLAT	
WEATHER WARM	FILE NOBLE ENERGY, INC.	

NOBLE ENERGY, INC.

MULTI-WELL PLAN

CIRCLE RANCH FEDERAL LB07-62HN &
CIRCLE RANCH LB08-62HN
SECTION 7, T9N, R60W, 6th P.M.

DATE: 09-10-12
DRAWN BY: S.R.L.
REVISED: 09-15-12



PAD DETAILS:
WELL HEAD SPACING = 37.5'

UINTAH ENGINEERING & LAND SURVEYING
85 So. 200 East * Vernal, Utah 84078 * (435) 789-1017