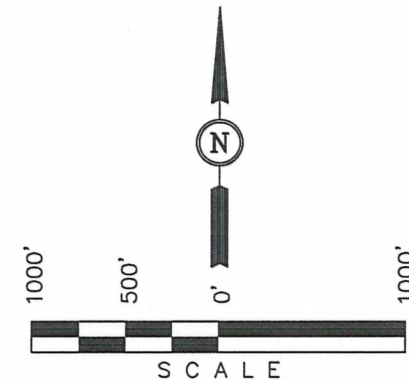


NOBLE ENERGY, INC.

BASIS OF ELEVATION

BASIS OF BEARINGS

BASIS OF BEARINGS IS A G.P.S. OBSERVATION.



CERTIFICATE

THIS IS TO CERTIFY THAT THE ABOVE PLAT WAS PREPARED FROM
FIELD NOTES OF ACTUAL SURVEYS MADE BY ME OR UNDER MY
SUPERVISION AND THAT THE SAME ARE TRUE AND CORRECT TO THE
BEST OF MY KNOWLEDGE AND BELIEF.

REGISTERED LAND SURVEYOR
REGISTRATION NO. 17492
STATE OF COLORADO
08-10-12

LEGEND:

▲ = SECTION CORNERS LOCATED.

FEATURE TABLE

PDOP = 1.5

NAD 83 (TARGET BOTTOM HOLE)	NAD 83 (SURFACE LOCATION)
LATITUDE = 40°45'29.34" (40.758150)	LATITUDE = 40°45'26.89" (40.757469)
LONGITUDE = 104°08'35.52" (104.143200)	LONGITUDE = 104°07'38.31" (104.127308)

UINTAH ENGINEERING & LAND SURVEYING

85 SOUTH 200 EAST - VERNAL, UTAH 84078

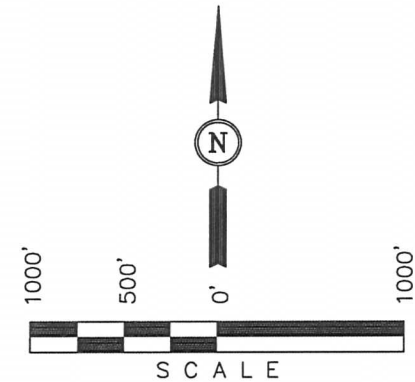
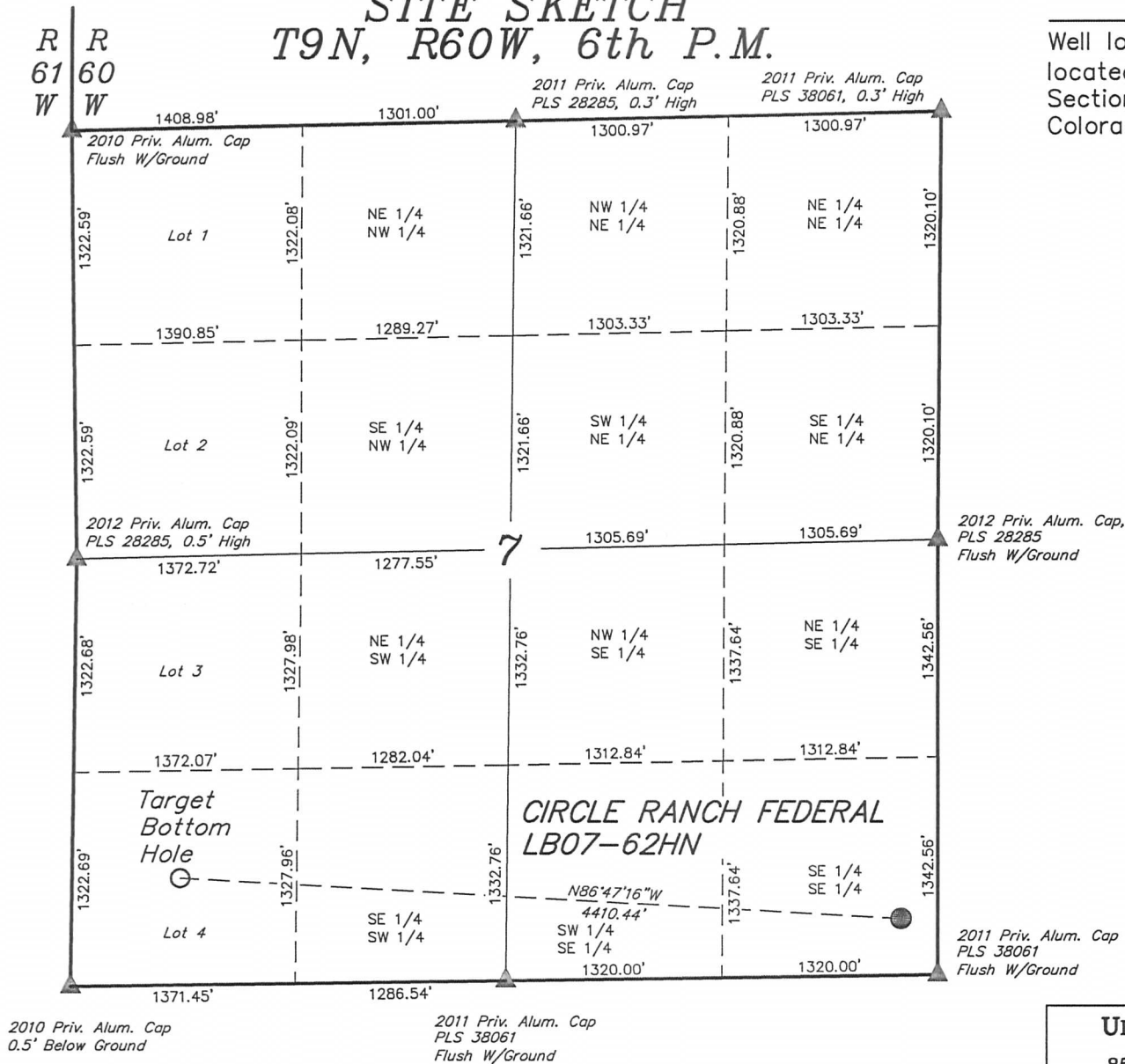
(435) 789-1017

SCALE 1" = 1000'	DATE SURVEYED: 06-21-12	DATE DRAWN: 07-31-12
PARTY DARREN SHANKS C.T. S.R.L.	REFERENCES G.L.O. PLAT	
WEATHER WARM	FILE NOBLE ENERGY, INC.	

SITE SKETCH T9N, R60W, 6th P.M.

NOBLE ENERGY, INC.

Well location, CIRCLE RANCH FEDERAL LB07-62HN, located as shown in the SE 1/4 SE 1/4 of Section 7, T9N, R60W, 6th P.M., Weld County, Colorado.



LEGEND:

- ▲ = SECTION CORNERS LOCATED.
- = PROPOSED WELL HEAD.
- = TARGET BOTTOM HOLE.

UINTAH ENGINEERING & LAND SURVEYING
85 SOUTH 200 EAST - VERNAL, UTAH 84078
(435) 789-1017

SCALE 1" = 1000'	DATE SURVEYED: 06-21-12	DATE DRAWN: 07-31-12
PARTY DARREN SHANKS C.T. S.R.L.	REFERENCES G.L.O. PLAT	
WEATHER WARM	FILE NOBLE ENERGY, INC.	