

**SYNERGY RESOURCES CORPORATION
20203 HIGHWAY 60
PLATTEVILLE, Colorado**

Avex 21-2D

Ensign 226

Post Job Summary **Cement Surface Casing**

Date Prepared: 12/19/2012
Version: 1

Service Supervisor: CLEMONS, WILLIAM

Submitted by: KENNEDY, HERRON

HALLIBURTON

Wellbore Geometry

Job Tubulars					MD	
Type	Description	Size in	ID in	Wt lbm/ft	Top ft	Bottom ft
Open Hole Section	Open Hole		12.250		0.00	610.00
Casing	Surface Casing	8.63	8.097	24.00	0.00	585.00

HALLIBURTON

Pumping Schedule

Stage /Plug #	Fluid #	Fluid Type	Fluid Name	Surface Density lbm/gal	Surface Volume	Downhole Volume
1	1	Spacer	Fresh Water Spacer	8.33	10.0 bbl	10.0 bbl
1	2	Cement Slurry	SwiftCem B2	13.40	175.0 sacks	175.0 sacks

Fluids Pumped

Stage/Plug # 1 Fluid 1: Fresh Water Spacer

Fluid Density: 8.33 lbm/gal
Fluid Volume: 10.00 bbl

Stage/Plug # 1 Fluid 2: SwiftCem B2
SWIFTCER (TM) SYSTEM

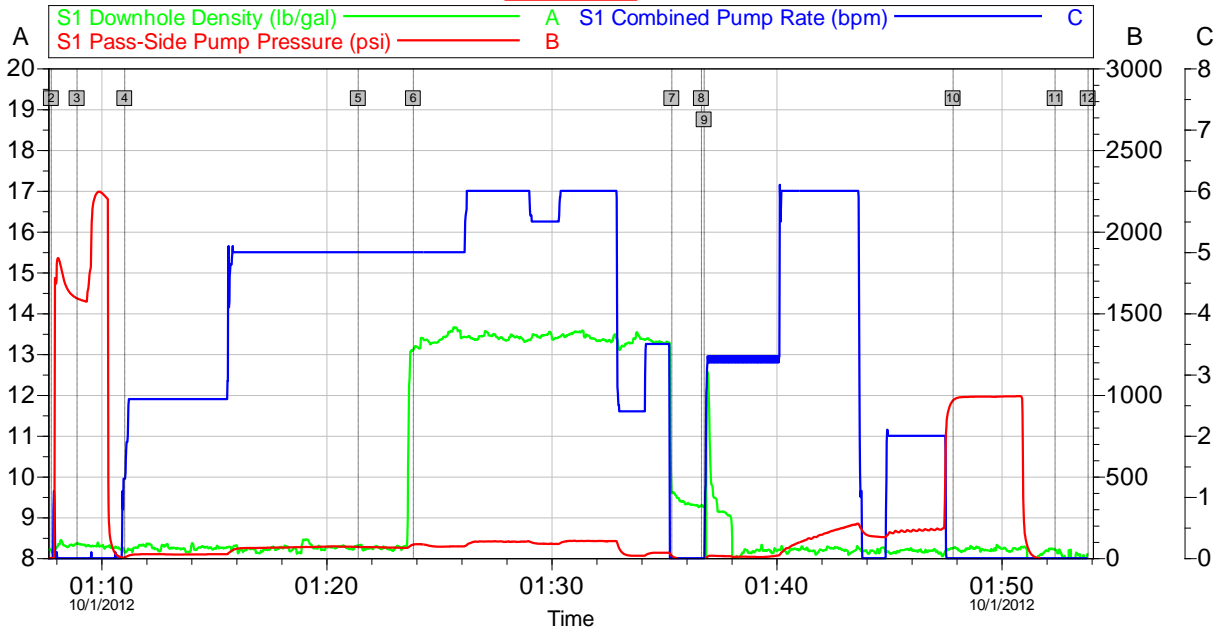
Fluid Weight: 13.40 lbm/gal
Slurry Yield: 1.84 ft³/sack
Total Mixing Fluid: 9.73 Gal
Surface Volume: 175.0 sacks
Sacks: 175.0 sacks
Calculated Fill: 650.00 ft
Calculated Top of Fluid: 0.00 ft

HALLIBURTON

Data Acquisition

SYNERGY RESOURCES CORP

21-2D SURFACE



Global Event Log																	
Intersection					Intersection					Intersection							
		SDD	SPPP	SCPR			SDD	SPPP	SCPR			SDD	SPPP	SCPR			
2	Start Job	01:07:46	8.200	2.000	0.000	3	Test Lines	01:08:55	8.370	1592	0.000	4	Pump Spacer 1	01:11:02	8.150	6.002	1.300
5	Pump Spacer 2	01:21:25	8.320	69.00	5.000	6	Pump Cement	01:23:52	13.12	84.00	5.000	7	Shutdown	01:35:21	9.610	15.00	0.000
8	Drop Top Plug	01:36:40	9.290	-5.000	0.000	9	Pump Displacement	01:36:47	9.250	-4.998	0.000	10	Bump Plug	01:47:51	8.250	967.0	0.000
11	End Job	01:52:23	8.210	-4.000	0.000	12	Ending Job	01:53:51	8.120	-5.000	0.000						

Customer: SYNERGY RESOURCES
Well Description: 21-2D

Job Date: 01-Oct-2012
JOB TYPE: SURFACE

Sales Order #: 9857682
SUPERVISOR: BILL CLEMONS

OptiCem v6.4.21
01-Oct-12 02:23

HALLIBURTON

Service Supervisor Reports

Job Log

Date/Time	Chart #	Activity Code	Pump Rate	Cum Vol	Pump	Pressure (psig)	Comments
09/30/2012 21:00		Call Out					CALLED OUT ON SYNERGY RESOURCES CORPORATION 21-2D SURFACE
09/30/2012 22:00		Pre-Convoy Safety Meeting					DISCUSSED ROUTE AND CONVOY ORDER AND HAZRDS POSSIBLY ENCOUNTERED DURING TRIP
09/30/2012 22:05		Crew Leave Yard					JOURNEY MANAGEMENT CALLED IN
09/30/2012 23:00		Arrive At Loc					ASSESSED LOCATION AND INDENTIFIED HAZARDS
09/30/2012 23:15		Pre-Rig Up Safety Meeting					DISCUSSED HAZARDS FOUND DURING LOCATION ASSESSMENT
10/01/2012 00:45		Pre-Job Safety Meeting					DISCUSSED FLOOR RIG-UP AND JOB PROCEDURE
10/01/2012 01:05		Rig-Up Completed					FLOOR RIGGED UP AND RAEDY TO START JOB
10/01/2012 01:07		Start Job	2	4		2.0	FILLED LINES WITH H2O
10/01/2012 01:08		Pressure Test				2200.0	PRESSURE TEST TO 2000 PSI PER CoMan
10/01/2012 01:11		Pump Spacer	5	46		69.0	PUMP H2O SPACER LAST 10 BBLS WITH DYE
10/01/2012 01:23		Pump Lead Cement	6	57		84.0	MIX & PUMP 175 SACKS OF SWIFCEM @ 13.4 PPG, 1.84 YIELD, 9.73 GAL/SK
10/01/2012 01:35		Shutdown					DROPPED TOP PLUG WITNESSED BY CoMan
10/01/2012 01:36		Pump Displacement	6	30		85.0	PUMPED H2O DISPLACEMENT
10/01/2012 01:43		Slow Rate	2	9		100.0	SLOWED TO 2 BPM
10/01/2012 01:47		Bump Plug				175.0	PRESSURED UP 500 PER CoMan
10/01/2012 01:48		Shutdown				900.0	HELP FOR PRESSURE TEST
10/01/2012 01:52		Check Floats					FLOATS HELD WITH 1 BBL BACK TO TRUCK
10/01/2012 01:53		End Job					PLUG BUMPED, FLOATS HELD, 7 LS OF CEMENT TO SURFACE
10/01/2012 02:00		Pre-Rig Down Safety Meeting					DISCUSSED RIG-DOWN HAZARDS
10/01/2012 02:05		Rig-Down Equipment					
10/01/2012 02:30		Rig-Down Completed					
10/01/2012 02:55		Pre-Convoy Safety Meeting					DISCUSSED ROUTE,CONVOY ORDER, AND POTENTIAL HAZARDS ENCOUNTERED DURING TRAVEL
10/01/2012 03:00		Crew Leave Location					JOURNEY MANAGEMENT CALLED INTO DISPATCH
10/01/2012 03:00		Job Complete					THANK YOU FROM HES AND CREW

The Road to Excellence Starts with Safety

Sold To #: 359915		Ship To #: 2953754		Quote #:		Sales Order #: 9857682	
Customer: SYNERGY RESOURCES CORPORATION				Customer Rep: Weitzel, Charlie			
Well Name: Avex			Well #: 21-2D		API/UWI #: 05-123-35224-00		
Field: WATTENBERG		City (SAP): JOHNSTOWN		County/Parish: Weld		State: Colorado	
Contractor: Ensign			Rig/Platform Name/Num: 226				
Job Purpose: Cement Surface Casing							
Well Type: Development Well				Job Type: Cement Surface Casing			
Sales Person: AARON, WESLEY				Srvc Supervisor: CLEMONS, WILLIAM		MBU ID Emp #: 407973	

Job Personnel

HES Emp Name	Exp Hrs	Emp #	HES Emp Name	Exp Hrs	Emp #	HES Emp Name	Exp Hrs	Emp #
CLEMONS, WILLIAM Edward	0.0	407973	HOLLOWAY, DUSTIN Craig	0.0	504032	WILEY, JAMES A	0.0	440080

Equipment

HES Unit #	Distance-1 way	HES Unit #	Distance-1 way	HES Unit #	Distance-1 way	HES Unit #	Distance-1 way
11142999	30 mile	11362287C	30 mile	11633846C	30 mile	11645065	30 mile

Job Hours

Date	On Location Hours	Operating Hours	Date	On Location Hours	Operating Hours	Date	On Location Hours	Operating Hours
TOTAL	Total is the sum of each column separately							

Job

Formation Name	Top	Bottom	Called Out	Date	Time	Time Zone
Formation Depth (MD)			On Location	30 - Sep - 2012	21:00	MST
Form Type		BHST	Job Started	30 - Sep - 2012	23:00	MST
Job depth MD	615. ft	Job Depth TVD	Job Completed	01 - Oct - 2012	01:00	MST
Water Depth		Wk Ht Above Floor	Departed Loc	01 - Oct - 2012	02:00	MST
Perforation Depth (MD)	From	To		01 - Oct - 2012	04:00	MST

Well Data

Description	New / Used	Max pressure psig	Size in	ID in	Weight lbm/ft	Thread	Grade	Top MD ft	Bottom MD ft	Top TVD ft	Bottom TVD ft
Open Hole				12.25				.	610.	.	.
Surface Casing	Mixed		8.625	8.097	24.			.	585.	.	.

Fluid Data

Stage/Plug #: 1

Fluid #	Stage Type	Fluid Name	Qty	Qty uom	Mixing Density lbm/gal	Yield ft ³ /sk	Mix Fluid Gal/sk	Rate bbl/min	Total Mix Fluid Gal/sk
1	Fresh Water Spacer		10.00	bbl	8.33	.0	.0	.0	
2	SwiftCem B2	SWIFTCem (TM) SYSTEM (452990)	175.0	sacks	13.4	1.84	9.73		9.73
	9.73 Gal	FRESH WATER							

The Information Stated Herein Is Correct

Customer Representative Signature

