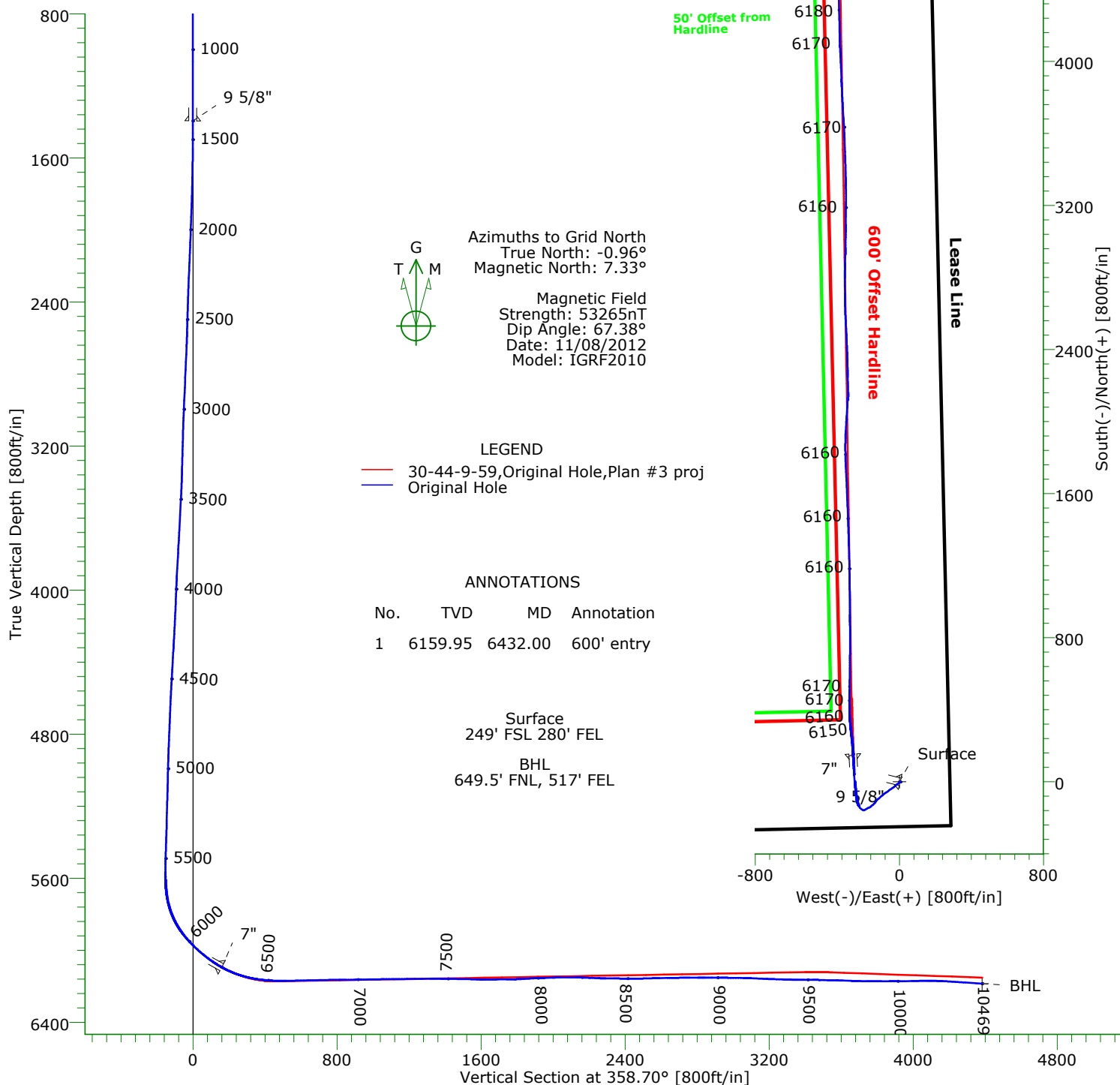




## CASING DETAILS

No.	TVD	MD	Name	Size
1	1395.99	1396.00	9 5/8"	9.625
2	6095.53	6230.00	7"	7.000



## TARGET DETAILS

Name	TVD	+N/-S	+E/-W	Northing	Easting	Latitude	Longitude	Shape
Surface	0.00	0.00	0.00	1506673.41	3412376.83	40°42'52.942N	104°00'44.631W	Point
BHL	6186.47	4376.79	-336.83	1511050.20	3412040.00	40°43'36.240N	104°00'48.051W	Point

# Precision Directional Services, Inc.

## Survey Report

<b>Company:</b> CARRIZO OIL & GAS, INC. <b>Field:</b> Niobrara CONZ'83 <b>Site:</b> Ptasnik 30-44-9-59 <b>Well:</b> 30-44-9-59 <b>Wellpath:</b> Original Hole	<b>Date:</b> 12/27/2012 <b>Co-ordinate(NE) Reference:</b> <b>Vertical (TVD) Reference:</b> <b>Section (VS) Reference:</b> <b>Survey Calculation Method:</b>	<b>Time:</b> 08:10:56 <b>Well:</b> 30-44-9-59, Grid North 4906'GL+17'KB 4923.0 <b>Well (0.00N,0.00E,358.70Azi)</b> <b>Minimum Curvature</b>	<b>Page:</b> 1 <b>Db:</b> Sybase
---	---	---	-------------------------------------

<b>Field:</b> Niobrara CONZ'83			
<b>Map System:</b> US State Plane Coordinate System 1983		<b>Map Zone:</b> Colorado, Northern Zone	
<b>Geo Datum:</b> GRS 1980		<b>Coordinate System:</b> Well Centre	
<b>Sys Datum:</b> Mean Sea Level		<b>Geomagnetic Model:</b> IGRF2010	

<b>Site:</b> Ptasnik 30-44-9-59 S:30, T9N:,R59W Weld County, CO			
<b>Site Position:</b>	<b>Northing:</b> 1506671.62 ft	<b>Latitude:</b> 40 42 52.948 N	
<b>From:</b> Map	<b>Easting:</b> 3412234.24 ft	<b>Longitude:</b> 104 0 46.483 W	
<b>Position Uncertainty:</b> 0.00 ft		<b>North Reference:</b> Grid	
<b>Ground Level:</b> 4906.00 ft		<b>Grid Convergence:</b> 0.96 deg	

<b>Well:</b> 30-44-9-59 surface adjusted 12-27-2012 post drill			
<b>Well Position:</b> +N/-S 1.79 ft		<b>Northing:</b> 1506673.41 ft	<b>Latitude:</b> 40 42 52.942 N
+E/-W 142.59 ft		<b>Easting :</b> 3412376.83 ft	<b>Longitude:</b> 104 0 44.631 W
<b>Position Uncertainty:</b> 0.00 ft			

<b>Wellpath:</b> Original Hole		<b>Drilled From:</b> Surface	
<b>Current Datum:</b> 4906'GL+17'KB		<b>Tie-on Depth:</b> 0.00 ft	
<b>Magnetic Data:</b> 11/08/2012		<b>Above System Datum:</b> Mean Sea Level	
<b>Field Strength:</b> 53265 nT		<b>Declination:</b> 8.29 deg	
<b>Vertical Section:</b> Depth From (TVD)		<b>Mag Dip Angle:</b> 67.38 deg	
ft	+N/-S ft	+E/-W ft	<b>Direction</b> deg
0.00	0.00	0.00	358.70

<b>Survey Program for Definitive Wellpath</b>				
<b>Date:</b> 12/27/2012		<b>Validated:</b> No		<b>Version:</b> 0
<b>Actual From</b> ft	<b>To</b> ft	<b>Survey</b>	<b>Toolcode</b>	<b>Tool Name</b>
1420.00	10376.00	Survey #1 (1420.00-10376.00)	MWD	Std MWD
10469.00	10469.00	Survey #2 (10469.00-10469.00)	Project	Projection

<b>Survey</b>										
MD ft	Incl deg	Azim deg	TVD ft	+N/-S ft	+E/-W ft	VS ft	DLS deg/100ft	Build deg/100ft	Turn deg/100ft	Tool/Comment
0.00	0.00	0.00	0.00	0.00	0.00	0.00	0.00	0.00	0.00	TIE LINE
1420.00	0.40	103.70	1419.99	-1.17	4.82	-1.28	0.03	0.03	0.00	MWD
1463.00	0.40	64.10	1462.99	-1.14	5.10	-1.26	0.63	0.00	-92.09	MWD
1548.00	0.20	55.70	1547.99	-0.93	5.49	-1.05	0.24	-0.24	-9.88	MWD
1633.00	0.90	216.30	1632.98	-1.39	5.21	-1.50	1.28	0.82	188.94	MWD
1717.00	2.40	234.80	1716.95	-2.93	3.39	-3.01	1.87	1.79	22.02	MWD
1802.00	3.30	238.80	1801.84	-5.22	-0.16	-5.22	1.08	1.06	4.71	MWD
1887.00	4.00	234.40	1886.67	-8.22	-4.66	-8.11	0.89	0.82	-5.18	MWD
1972.00	3.90	239.00	1971.47	-11.43	-9.55	-11.21	0.39	-0.12	5.41	MWD
2057.00	4.00	235.00	2056.26	-14.62	-14.46	-14.29	0.34	0.12	-4.71	MWD
2142.00	3.70	228.80	2141.07	-18.13	-18.95	-17.69	0.60	-0.35	-7.29	MWD
2226.00	3.40	226.90	2224.91	-21.62	-22.81	-21.09	0.38	-0.36	-2.26	MWD
2312.00	3.50	226.20	2310.76	-25.17	-26.57	-24.57	0.13	0.12	-0.81	MWD
2397.00	2.80	232.70	2395.63	-28.23	-30.09	-27.54	0.92	-0.82	7.65	MWD
2482.00	3.50	236.50	2480.50	-30.92	-33.91	-30.14	0.86	0.82	4.47	MWD
2566.00	3.00	241.60	2564.36	-33.38	-37.98	-32.51	0.69	-0.60	6.07	MWD
2651.00	4.40	234.30	2649.18	-36.34	-42.58	-35.36	1.73	1.65	-8.59	MWD
2736.00	4.30	233.90	2733.94	-40.12	-47.80	-39.03	0.12	-0.12	-0.47	MWD
2822.00	4.20	233.70	2819.70	-43.88	-52.95	-42.67	0.12	-0.12	-0.23	MWD
2907.00	4.10	230.60	2904.48	-47.66	-57.80	-46.33	0.29	-0.12	-3.65	MWD
2992.00	4.00	230.20	2989.27	-51.48	-62.43	-50.05	0.12	-0.12	-0.47	MWD
3076.00	3.50	232.70	3073.09	-54.91	-66.72	-53.38	0.63	-0.60	2.98	MWD

# Precision Directional Services, Inc.

## Survey Report

<b>Company:</b> CARRIZO OIL & GAS, INC. <b>Field:</b> Niobrara CONZ'83 <b>Site:</b> Ptasnik 30-44-9-59 <b>Well:</b> 30-44-9-59 <b>Wellpath:</b> Original Hole	<b>Date:</b> 12/27/2012 <b>Co-ordinate(NE) Reference:</b> Well: 30-44-9-59, Grid North <b>Vertical (TVD) Reference:</b> 4906'GL+17"KB 4923.0 <b>Section (VS) Reference:</b> Well (0.00N,0.00E,358.70Azi) <b>Survey Calculation Method:</b> Minimum Curvature	<b>Time:</b> 08:10:56 <b>Page:</b> 2 <b>Db:</b> Sybase
---	--	--

### Survey

MD ft	Incl deg	Azim deg	TVD ft	+N/-S ft	+E/-W ft	VS ft	DLS deg/100ft	Build deg/100ft	Turn deg/100ft	Tool/Comment
3161.00	3.00	241.60	3157.95	-57.54	-70.74	-55.92	0.83	-0.59	10.47	MWD
3246.00	3.30	238.10	3242.82	-59.89	-74.77	-58.18	0.42	0.35	-4.12	MWD
3332.00	2.60	238.00	3328.71	-62.23	-78.53	-60.44	0.81	-0.81	-0.12	MWD
3417.00	4.00	235.00	3413.57	-64.96	-82.59	-63.07	1.66	1.65	-3.53	MWD
3502.00	4.70	230.00	3498.32	-68.90	-87.69	-66.89	0.94	0.82	-5.88	MWD
3587.00	4.70	230.70	3583.03	-73.34	-93.05	-71.21	0.07	0.00	0.82	MWD
3672.00	4.70	231.10	3667.75	-77.73	-98.46	-75.48	0.04	0.00	0.47	MWD
3758.00	5.00	226.20	3753.44	-82.54	-103.90	-80.16	0.59	0.35	-5.70	MWD
3843.00	4.70	227.80	3838.14	-87.44	-109.16	-84.94	0.39	-0.35	1.88	MWD
3928.00	4.50	227.80	3922.86	-92.02	-114.21	-89.41	0.24	-0.24	0.00	MWD
4013.00	3.60	233.00	4007.65	-95.87	-118.81	-93.15	1.14	-1.06	6.12	MWD
4098.00	3.40	224.20	4092.49	-99.28	-122.70	-96.47	0.67	-0.24	-10.35	MWD
4182.00	3.70	219.70	4176.33	-103.15	-126.17	-100.26	0.49	0.36	-5.36	MWD
4267.00	3.60	212.10	4261.16	-107.52	-129.34	-104.56	0.58	-0.12	-8.94	MWD
4353.00	4.50	219.50	4346.94	-112.41	-132.92	-109.37	1.21	1.05	8.60	MWD
4437.00	4.70	219.70	4430.67	-117.60	-137.21	-114.46	0.24	0.24	0.24	MWD
4522.00	4.10	222.30	4515.42	-122.53	-141.48	-119.29	0.74	-0.71	3.06	MWD
4607.00	4.40	233.40	4600.19	-126.72	-146.14	-123.37	1.03	0.35	13.06	MWD
4692.00	4.00	231.50	4684.96	-130.51	-151.08	-127.05	0.50	-0.47	-2.24	MWD
4776.00	3.30	225.80	4768.79	-134.02	-155.11	-130.47	0.94	-0.83	-6.79	MWD
4862.00	3.60	227.80	4854.64	-137.56	-158.88	-133.92	0.38	0.35	2.33	MWD
4947.00	3.90	242.50	4939.45	-140.69	-163.42	-136.94	1.18	0.35	17.29	MWD
5032.00	3.40	252.20	5024.28	-142.79	-168.39	-138.94	0.93	-0.59	11.41	MWD
5117.00	4.00	243.60	5109.11	-144.88	-173.44	-140.91	0.96	0.71	-10.12	MWD
5202.00	3.20	241.80	5193.94	-147.32	-178.19	-143.24	0.95	-0.94	-2.12	MWD
5287.00	3.30	243.90	5278.80	-149.52	-182.48	-145.34	0.18	0.12	2.47	MWD
5373.00	4.10	238.80	5364.62	-152.20	-187.33	-147.91	1.00	0.93	-5.93	MWD
5457.00	3.30	237.80	5448.45	-155.04	-191.94	-150.65	0.96	-0.95	-1.19	MWD
5534.00	2.30	238.70	5525.35	-157.03	-195.14	-152.56	1.30	-1.30	1.17	MWD
5574.00	2.20	243.20	5565.32	-157.79	-196.51	-153.29	0.51	-0.25	11.25	MWD
5616.00	4.70	280.70	5607.25	-157.83	-198.92	-153.28	7.72	5.95	89.29	MWD
5659.00	9.00	295.10	5649.93	-156.08	-203.70	-151.42	10.69	10.00	33.49	MWD
5701.00	13.50	304.20	5691.12	-151.93	-210.73	-147.11	11.49	10.71	21.67	MWD
5744.00	16.40	317.60	5732.67	-144.62	-218.98	-139.61	10.45	6.74	31.16	MWD
5787.00	19.80	331.10	5773.56	-133.75	-226.60	-128.58	12.51	7.91	31.40	MWD
5829.00	23.90	341.80	5812.55	-119.43	-232.70	-114.12	13.57	9.76	25.48	MWD
5872.00	28.90	348.90	5851.06	-100.94	-237.43	-95.53	13.73	11.63	16.51	MWD
5914.00	34.80	352.90	5886.72	-79.07	-240.87	-73.59	14.91	14.05	9.52	MWD
5956.00	39.60	354.50	5920.17	-53.84	-243.63	-48.30	11.66	11.43	3.81	MWD
5999.00	43.10	355.40	5952.44	-25.54	-246.12	-19.95	8.26	8.14	2.09	MWD
6041.00	46.30	355.70	5982.29	3.91	-248.41	9.54	7.64	7.62	0.71	MWD
6084.00	49.20	355.70	6011.20	35.64	-250.80	41.32	6.74	6.74	0.00	MWD
6126.00	52.10	355.90	6037.83	68.03	-253.18	73.76	6.91	6.90	0.48	MWD
6169.00	55.30	356.60	6063.28	102.61	-255.44	108.37	7.56	7.44	1.63	MWD
6222.00	60.10	357.00	6091.59	147.32	-257.94	153.14	9.08	9.06	0.75	MWD
6265.00	64.70	355.70	6111.51	185.34	-260.37	191.20	11.03	10.70	-3.02	MWD
6308.00	69.10	354.50	6128.38	224.74	-263.75	230.66	10.55	10.23	-2.79	MWD
6350.00	73.50	353.30	6141.84	264.28	-267.99	270.29	10.82	10.48	-2.86	MWD
6391.00	77.30	354.30	6152.17	303.72	-272.27	309.82	9.56	9.27	2.44	MWD
6434.00	81.00	356.30	6160.27	345.80	-275.72	351.97	9.74	8.60	4.65	MWD
6477.00	84.20	358.20	6165.81	388.38	-277.76	394.59	8.64	7.44	4.42	MWD
6519.00	86.90	0.30	6169.07	430.25	-278.31	436.45	8.13	6.43	5.00	MWD
6561.00	89.30	1.00	6170.46	472.22	-277.84	478.40	5.95	5.71	1.67	MWD

# Precision Directional Services, Inc.

## Survey Report

<b>Company:</b> CARRIZO OIL & GAS, INC.	<b>Date:</b> 12/27/2012	<b>Time:</b> 08:10:56	<b>Page:</b> 3
<b>Field:</b> Niobrara CONZ'83	<b>Co-ordinate(NE) Reference:</b> Well: 30-44-9-59, Grid North		
<b>Site:</b> Ptasnik 30-44-9-59	<b>Vertical (TVD) Reference:</b> 4906'GL+17'KB 4923.0		
<b>Well:</b> 30-44-9-59	<b>Section (VS) Reference:</b> Well (0.00N,0.00E,358.70Azi)		
<b>Wellpath:</b> Original Hole	<b>Survey Calculation Method:</b> Minimum Curvature	<b>Db:</b> Sybase	

### Survey

MD ft	Incl deg	Azim deg	TVD ft	+N/-S ft	+E/-W ft	VS ft	DLS deg/100ft	Build deg/100ft	Turn deg/100ft	Tool/Comment
6602.00	91.10	1.20	6170.31	513.21	-277.05	519.36	4.42	4.39	0.49	MWD
6637.00	91.30	1.00	6169.58	548.19	-276.38	554.32	0.81	0.57	-0.57	MWD
6679.00	90.90	0.80	6168.78	590.18	-275.72	596.29	1.06	-0.95	-0.48	MWD
6722.00	91.20	0.50	6167.99	633.17	-275.23	639.25	0.99	0.70	-0.70	MWD
6765.00	91.30	0.30	6167.05	676.16	-274.93	682.22	0.52	0.23	-0.47	MWD
6807.00	91.40	0.70	6166.06	718.15	-274.56	724.19	0.98	0.24	0.95	MWD
6848.00	91.10	0.30	6165.17	759.14	-274.20	765.16	1.22	-0.73	-0.98	MWD
6891.00	90.70	0.10	6164.49	802.13	-274.05	808.14	1.04	-0.93	-0.47	MWD
6934.00	90.20	359.20	6164.15	845.13	-274.32	851.13	2.39	-1.16	-2.09	MWD
6976.00	90.10	359.40	6164.04	887.12	-274.83	893.13	0.53	-0.24	0.48	MWD
7018.00	91.50	359.90	6163.46	929.12	-275.09	935.12	3.54	3.33	1.19	MWD
7059.00	91.30	359.80	6162.45	970.11	-275.19	976.10	0.55	-0.49	-0.24	MWD
7102.00	90.90	359.60	6161.63	1013.10	-275.42	1019.08	1.04	-0.93	-0.47	MWD
7144.00	90.50	359.20	6161.12	1055.09	-275.86	1061.08	1.35	-0.95	-0.95	MWD
7187.00	90.30	359.40	6160.82	1098.09	-276.38	1104.07	0.66	-0.47	0.47	MWD
7229.00	90.60	359.10	6160.49	1140.08	-276.93	1146.07	1.01	0.71	-0.71	MWD
7272.00	90.70	358.90	6160.00	1183.07	-277.68	1189.07	0.52	0.23	-0.47	MWD
7315.00	90.70	358.70	6159.47	1226.06	-278.59	1232.06	0.47	0.00	-0.47	MWD
7357.00	90.70	358.40	6158.96	1268.04	-279.65	1274.06	0.71	0.00	-0.71	MWD
7400.00	90.60	358.40	6158.47	1311.02	-280.85	1317.06	0.23	-0.23	0.00	MWD
7443.00	89.30	358.50	6158.51	1354.01	-282.01	1360.06	3.03	-3.02	0.23	MWD
7484.00	89.10	357.80	6159.08	1394.98	-283.33	1401.05	1.78	-0.49	-1.71	MWD
7527.00	89.30	358.20	6159.68	1437.95	-284.84	1444.04	1.04	0.47	0.93	MWD
7569.00	89.10	357.80	6160.27	1479.92	-286.30	1486.04	1.06	-0.48	-0.95	MWD
7612.00	88.70	357.80	6161.09	1522.88	-287.95	1529.02	0.93	-0.93	0.00	MWD
7654.00	88.30	358.00	6162.19	1564.84	-289.49	1571.00	1.06	-0.95	0.48	MWD
7697.00	90.00	358.00	6162.83	1607.81	-290.99	1613.99	3.95	3.95	0.00	MWD
7739.00	90.10	357.50	6162.79	1649.77	-292.64	1655.99	1.21	0.24	-1.19	MWD
7782.00	90.40	357.00	6162.61	1692.72	-294.70	1698.97	1.36	0.70	-1.16	MWD
7825.00	90.40	357.30	6162.31	1735.67	-296.84	1741.96	0.70	0.00	0.70	MWD
7867.00	91.30	357.70	6161.68	1777.62	-298.67	1783.94	2.34	2.14	0.95	MWD
7910.00	93.40	359.20	6159.92	1820.57	-299.83	1826.90	6.00	4.88	3.49	MWD
7953.00	93.20	0.10	6157.44	1863.50	-300.10	1869.82	2.14	-0.47	2.09	MWD
7995.00	93.00	1.20	6155.17	1905.43	-299.62	1911.74	2.66	-0.48	2.62	MWD
8038.00	91.50	3.30	6153.49	1948.36	-297.93	1954.62	6.00	-3.49	4.88	MWD
8080.00	91.50	3.50	6152.39	1990.27	-295.44	1996.46	0.48	0.00	0.48	MWD
8123.00	90.20	3.80	6151.75	2033.18	-292.71	2039.30	3.10	-3.02	0.70	MWD
8166.00	90.20	3.60	6151.60	2076.09	-289.93	2082.13	0.47	0.00	-0.47	MWD
8208.00	90.00	3.30	6151.52	2118.01	-287.40	2123.99	0.86	-0.48	-0.71	MWD
8251.00	88.10	359.90	6152.24	2160.98	-286.20	2166.92	9.06	-4.42	-7.91	MWD
8293.00	87.40	359.40	6153.89	2202.95	-286.46	2208.88	2.05	-1.67	-1.19	MWD
8336.00	87.80	359.60	6155.69	2245.91	-286.84	2251.84	1.04	0.93	0.47	MWD
8378.00	89.80	358.50	6156.57	2287.89	-287.53	2293.83	5.43	4.76	-2.62	MWD
8420.00	89.50	358.40	6156.82	2329.88	-288.67	2335.83	0.75	-0.71	-0.24	MWD
8463.00	88.60	357.80	6157.54	2372.85	-290.09	2378.82	2.52	-2.09	-1.40	MWD
8505.00	89.80	358.00	6158.12	2414.81	-291.63	2420.81	2.90	2.86	0.48	MWD
8548.00	90.70	357.70	6157.93	2457.78	-293.24	2463.80	2.21	2.09	-0.70	MWD
8591.00	91.40	357.00	6157.15	2500.73	-295.23	2506.78	2.30	1.63	-1.63	MWD
8633.00	91.50	356.80	6156.08	2542.65	-297.50	2548.75	0.53	0.24	-0.48	MWD
8676.00	90.80	357.50	6155.22	2585.59	-299.64	2591.72	2.30	-1.63	1.63	MWD
8719.00	90.80	358.50	6154.62	2628.56	-301.14	2634.72	2.33	0.00	2.33	MWD
8761.00	91.30	358.90	6153.85	2670.54	-302.09	2676.71	1.52	1.19	0.95	MWD
8803.00	91.20	359.60	6152.93	2712.53	-302.64	2718.70	1.68	-0.24	1.67	MWD
8845.00	90.20	359.60	6152.42	2754.52	-302.94	2760.69	2.38	-2.38	0.00	MWD

# Precision Directional Services, Inc.

## Survey Report

<b>Company:</b> CARRIZO OIL & GAS, INC. <b>Field:</b> Niobrara CONZ'83 <b>Site:</b> Ptasnik 30-44-9-59 <b>Well:</b> 30-44-9-59 <b>Wellpath:</b> Original Hole	<b>Date:</b> 12/27/2012 <b>Co-ordinate(NE) Reference:</b> Well: 30-44-9-59, Grid North <b>Vertical (TVD) Reference:</b> 4906'GL+17'KB 4923.0 <b>Section (VS) Reference:</b> Well (0.00N,0.00E,358.70Azi) <b>Survey Calculation Method:</b> Minimum Curvature	<b>Page:</b> 4          <b>Db:</b> Sybase
---	--	---

### Survey

MD ft	Incl deg	Azim deg	TVD ft	+N/-S ft	+E/-W ft	VS ft	DLS deg/100ft	Build deg/100ft	Turn deg/100ft	Tool/Comment
8888.00	90.20	359.80	6152.27	2797.52	-303.16	2803.68	0.47	0.00	0.47	MWD
8931.00	89.00	1.40	6152.57	2840.52	-302.71	2846.65	4.65	-2.79	3.72	MWD
8973.00	89.80	1.90	6153.01	2882.50	-301.50	2888.59	2.25	1.90	1.19	MWD
9015.00	90.20	1.90	6153.01	2924.47	-300.11	2930.53	0.95	0.95	0.00	MWD
9057.00	88.90	0.50	6153.34	2966.46	-299.23	2972.49	4.55	-3.10	-3.33	MWD
9100.00	89.00	0.70	6154.13	3009.45	-298.78	3015.46	0.52	0.23	0.47	MWD
9143.00	89.20	0.50	6154.81	3052.44	-298.33	3058.43	0.66	0.47	-0.47	MWD
9185.00	87.80	0.30	6155.90	3094.43	-298.04	3100.39	3.37	-3.33	-0.48	MWD
9228.00	87.50	0.30	6157.67	3137.39	-297.81	3143.34	0.70	-0.70	0.00	MWD
9270.00	87.30	0.70	6159.57	3179.35	-297.45	3185.28	1.06	-0.48	0.95	MWD
9313.00	88.40	0.10	6161.19	3222.31	-297.15	3228.23	2.91	2.56	-1.40	MWD
9356.00	88.30	359.90	6162.42	3265.30	-297.15	3271.20	0.52	-0.23	-0.47	MWD
9398.00	88.20	359.20	6163.71	3307.27	-297.48	3313.17	1.68	-0.24	-1.67	MWD
9441.00	89.50	358.20	6164.57	3350.25	-298.45	3356.16	3.81	3.02	-2.33	MWD
9483.00	90.00	359.20	6164.75	3392.24	-299.40	3398.16	2.66	1.19	2.38	MWD
9526.00	89.70	358.90	6164.87	3435.23	-300.12	3441.16	0.99	-0.70	-0.70	MWD
9569.00	88.50	357.70	6165.54	3478.21	-301.39	3484.15	3.95	-2.79	-2.79	MWD
9611.00	88.40	357.80	6166.68	3520.16	-303.04	3526.13	0.34	-0.24	0.24	MWD
9654.00	89.00	357.80	6167.65	3563.12	-304.69	3569.11	1.40	1.40	0.00	MWD
9696.00	87.80	357.30	6168.83	3605.06	-306.49	3611.09	3.10	-2.86	-1.19	MWD
9739.00	87.80	357.00	6170.48	3647.98	-308.62	3654.04	0.70	0.00	-0.70	MWD
9782.00	88.90	356.40	6171.71	3690.89	-311.10	3697.00	2.91	2.56	-1.40	MWD
9824.00	89.60	356.40	6172.26	3732.80	-313.73	3738.96	1.67	1.67	0.00	MWD
9867.00	90.10	357.50	6172.38	3775.74	-316.02	3781.94	2.81	1.16	2.56	MWD
9909.00	89.30	356.80	6172.60	3817.69	-318.11	3823.92	2.53	-1.90	-1.67	MWD
9952.00	89.30	357.30	6173.12	3860.63	-320.32	3866.90	1.16	0.00	1.16	MWD
9994.00	91.30	358.00	6172.90	3902.59	-322.04	3908.89	5.05	4.76	1.67	MWD
10037.00	90.90	358.00	6172.08	3945.55	-323.54	3951.88	0.93	-0.93	0.00	MWD
10078.00	90.90	357.30	6171.43	3986.51	-325.23	3992.87	1.71	0.00	-1.71	MWD
10121.00	91.40	357.70	6170.57	4029.46	-327.10	4035.85	1.49	1.16	0.93	MWD
10163.00	90.20	357.00	6169.98	4071.41	-329.04	4077.83	3.31	-2.86	-1.67	MWD
10206.00	88.70	358.40	6170.40	4114.37	-330.77	4120.82	4.77	-3.49	3.26	MWD
10248.00	87.10	358.50	6171.93	4156.33	-331.90	4162.79	3.82	-3.81	0.24	MWD
10291.00	86.60	358.90	6174.30	4199.25	-332.88	4205.72	1.49	-1.16	0.93	MWD
10333.00	86.30	358.70	6176.90	4241.16	-333.75	4247.64	0.86	-0.71	-0.48	MWD
10376.00	85.90	358.70	6179.82	4284.05	-334.73	4290.54	0.93	-0.93	0.00	MWD
10469.00	85.90	358.70	6186.47	4376.79	-336.83	4383.31	0.00	0.00	0.00	PROJECTED to TD