





VICINITY MAP

BDU 25-1-199 PAD

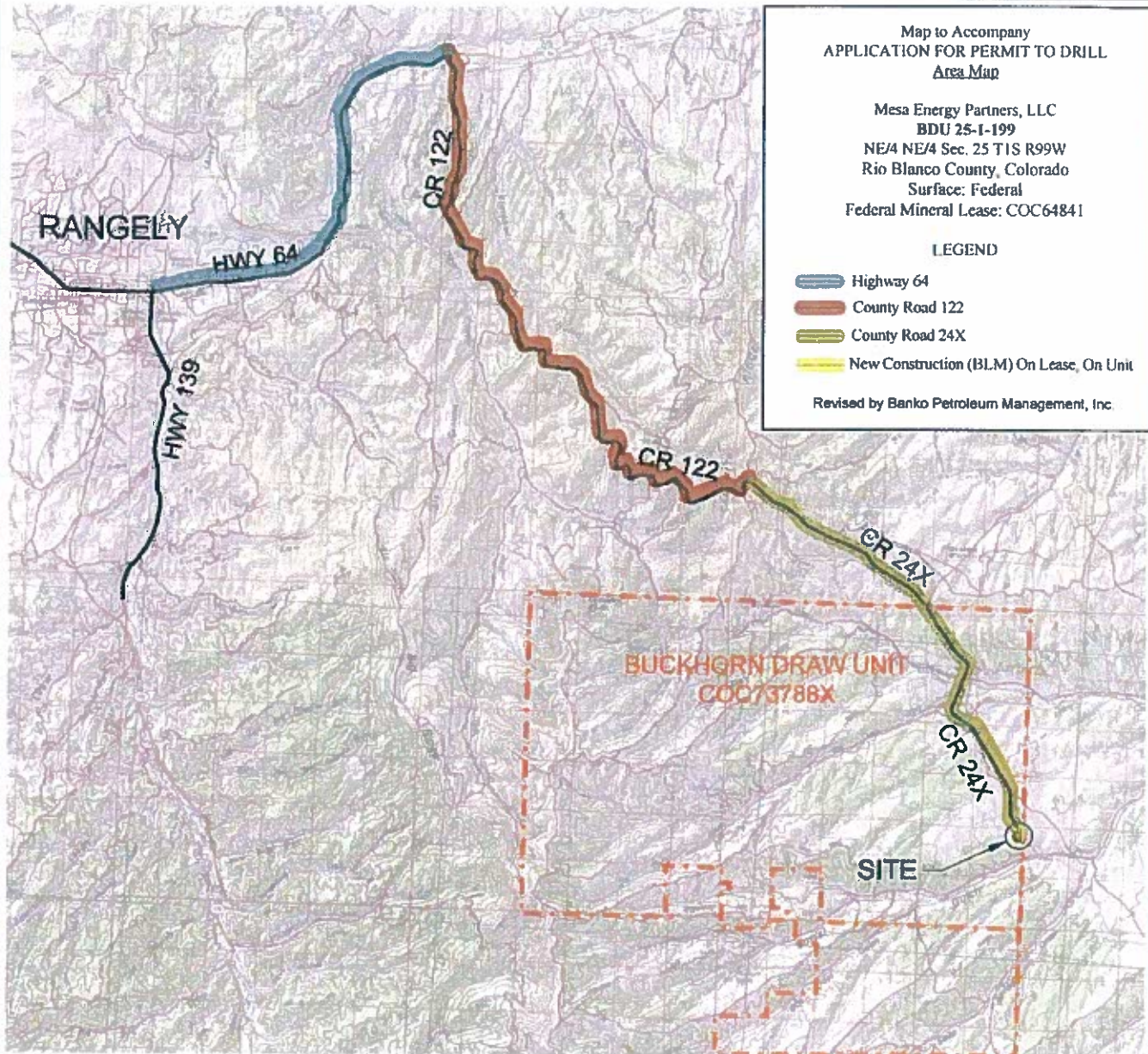
Map to Accompany
APPLICATION FOR PERMIT TO DRILL
Area Map

Mesa Energy Partners, LLC
BDU 25-1-199
NE/4 NE/4 Sec. 25 T1S R99W
Rio Blanco County, Colorado
Surface: Federal
Federal Mineral Lease: COC64841

LEGEND

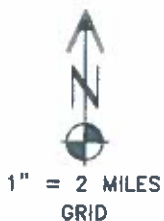
-  Highway 64
-  County Road 122
-  County Road 24X
-  New Construction (BLM) On Lease, On Unit

Revised by Banko Petroleum Management, Inc.



DRIVING DIRECTIONS:

- MP 0.0 - Intersection of Highway 64 & Highway 139; East on Highway 64
- MP 9.1 - Right on CR 122; South along CR 122
- MP 25.5 - Intersection CR 122 & CR 24X; Continue straight on CR 24X
- MP 33.3 - Right on access onto BDU 25-1-199 Pad



10 OF 12 6/23/10


LAND SURVEYING AND MAPPING
LAFAYETTE - WINTER PARK
Ph 303 686 0379 Fx 303 685 6320

MESA ENERGY PARTNERS, LLC
BDU 25-1-199

NE1/4 NE1/4 SEC. 25 T1S R99W
6th PM RIO BLANCO COUNTY COLORADO