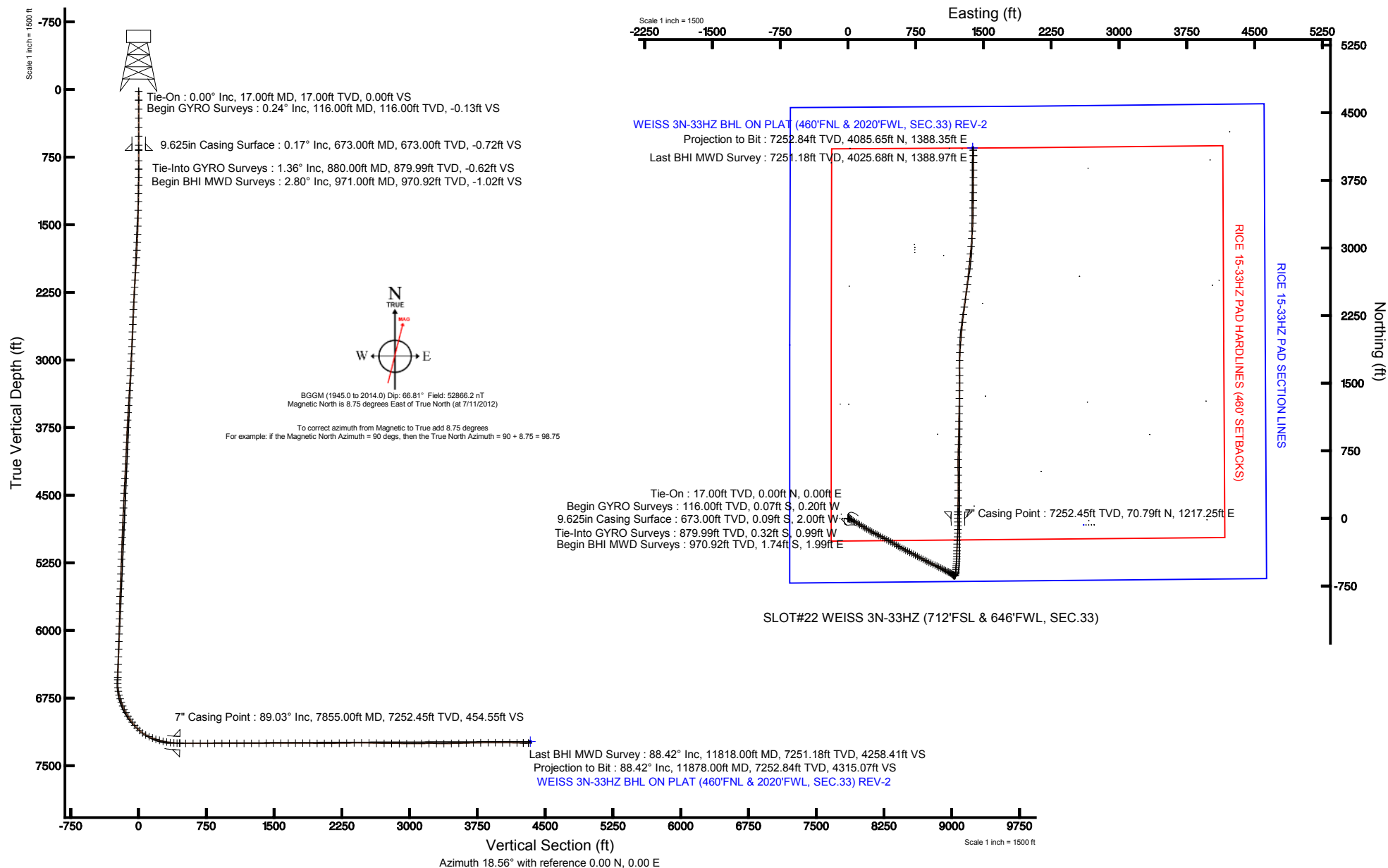


KERR-MCGEE OIL & GAS ONSHORE LP

Location: COLORADO Slot: SLOT#22 WEISS 3N-33HZ (712'FSL & 646'FWL, SEC.33)
 Field: WELD COUNTY (KERR MCGEE) Well: WEISS 3N-33HZ
 Facility: SEC.33-T3N-R66W Wellbore: WEISS 3N-33HZ PWB

Plot reference wellpath is WEISS 3N-33HZ (REV-B.0) PWP

True vertical depths are referenced to XTREME 6 (RKB)	Grid System: NAD83 / Lambert Colorado SP, Northern Zone (501), US feet
Measured depths are referenced to XTREME 6 (RKB)	North Reference: True north
XTREME 6 (RKB) to Mean Sea Level: 4931 feet	Scale: True distance
Mean Sea Level to Mud line (At Slot: SLOT#22 WEISS 3N-33HZ (712'FSL & 646'FWL, SEC.33): 0 feet	Depths are in feet
Coordinates are in feet referenced to Slot	Created by: wilsje02 on 8/8/2012





Actual Wellpath Report

WEISS 3N-33HZ AWP

Page 1 of 7



REFERENCE WELLPATH IDENTIFICATION

Operator	KERR-MCGEE OIL & GAS ONSHORE LP	Slot	SLOT#22 WEISS 3N-33HZ (712'FSL & 646'FWL, SEC.33)
Area	COLORADO	Well	WEISS 3N-33HZ
Field	WELD COUNTY (KERR MCGEE)	Wellbore	WEISS 3N-33HZ AWB
Facility	SEC.33-T3N-R66W		

REPORT SETUP INFORMATION

Projection System	NAD83 / Lambert Colorado SP, Northern Zone (501), US feet	Software System	WellArchitect® 3.0.2
North Reference	True	User	Wilsjef02
Scale	0.999958	Report Generated	8/8/2012 at 09:16:27
Convergence at slot	0.46° East	Database/Source file	WellArchitectDB/WEISS_3N-33HZ_AWB.xml

WELLPATH LOCATION

	Local coordinates		Grid coordinates		Geographic coordinates	
	North[ft]	East[ft]	Easting[US ft]	Northing[US ft]	Latitude	Longitude
Slot Location	74.51	-2605.49	3198583.99	1307813.04	40°10'34.169"N	104°47'21.541"W
Facility Reference Pt			3201189.88	1307759.68	40°10'33.434"N	104°46'47.975"W
Field Reference Pt			3197771.84	1268891.29	40°04'09.600"N	104°47'36.000"W

WELLPATH DATUM

Calculation method	Minimum curvature	XTREME 6 (RKB) to Facility Vertical Datum	4931.00ft
Horizontal Reference Pt	Slot	XTREME 6 (RKB) to Mean Sea Level	4931.00ft
Vertical Reference Pt	XTREME 6 (RKB)	XTREME 6 (RKB) to Mud Line at Slot (SLOT#22 WEISS 3N-33HZ (712'FSL & 646'FWL, SEC.33))	4931.00ft
MD Reference Pt	XTREME 6 (RKB)	Section Origin	N 0.00, E 0.00 ft
Field Vertical Reference	Mean Sea Level	Section Azimuth	18.77°



Actual Wellpath Report

WEISS 3N-33HZ AWP

Page 2 of 7



REFERENCE WELLPATH IDENTIFICATION			
Operator	KERR-MCGEE OIL & GAS ONSHORE LP	Slot	SLOT#22 WEISS 3N-33HZ (712'FSL & 646'FWL, SEC.33)
Area	COLORADO	Well	WEISS 3N-33HZ
Field	WELD COUNTY (KERR MCGEE)	Wellbore	WEISS 3N-33HZ AWB
Facility	SEC.33-T3N-R66W		

WELLPATH DATA (156 stations) † = interpolated/extrapolated station										
MD [ft]	Inclination [°]	Azimuth [°]	TVD [ft]	Vert Sect [ft]	North [ft]	East [ft]	Latitude	Longitude	DLS [°/100ft]	Comments
0.00†	0.000	251.150	0.00	0.00	0.00	0.00	40°10'34.169"N	104°47'21.541"W	0.00	
17.00	0.000	251.150	17.00	0.00	0.00	0.00	40°10'34.169"N	104°47'21.541"W	0.00	Tie-On
116.00	0.240	251.150	116.00	-0.13	-0.07	-0.20	40°10'34.168"N	104°47'21.544"W	0.24	Begin GYRO Surveys
216.00	0.160	235.330	216.00	-0.37	-0.21	-0.51	40°10'34.167"N	104°47'21.548"W	0.10	
316.00	0.190	299.430	316.00	-0.45	-0.21	-0.77	40°10'34.167"N	104°47'21.551"W	0.19	
416.00	0.410	280.790	416.00	-0.47	-0.06	-1.26	40°10'34.168"N	104°47'21.557"W	0.24	
516.00	0.080	279.150	516.00	-0.53	0.01	-1.68	40°10'34.169"N	104°47'21.563"W	0.33	
616.00	0.160	226.690	616.00	-0.66	-0.07	-1.86	40°10'34.168"N	104°47'21.565"W	0.13	
666.00	0.180	286.070	666.00	-0.73	-0.10	-1.98	40°10'34.168"N	104°47'21.567"W	0.34	
788.00	0.170	42.360	788.00	-0.57	0.09	-2.04	40°10'34.170"N	104°47'21.567"W	0.24	
880.00	1.360	118.130	879.99	-0.62	-0.32	-0.99	40°10'34.166"N	104°47'21.554"W	1.44	Tie-Into GYRO Surveys
971.00	2.800	114.100	970.92	-1.01	-1.74	1.99	40°10'34.152"N	104°47'21.515"W	1.59	Begin BHI MWD Surveys
1062.00	4.090	116.180	1061.76	-1.63	-4.08	6.93	40°10'34.129"N	104°47'21.452"W	1.42	
1153.00	5.030	114.920	1152.47	-2.48	-7.19	13.46	40°10'34.098"N	104°47'21.368"W	1.04	
1245.00	6.160	117.650	1244.03	-3.67	-11.18	21.49	40°10'34.058"N	104°47'21.264"W	1.26	
1337.00	7.650	117.310	1335.36	-5.34	-16.28	31.31	40°10'34.008"N	104°47'21.138"W	1.62	
1427.00	8.790	116.770	1424.43	-7.19	-22.13	42.77	40°10'33.950"N	104°47'20.990"W	1.27	
1519.00	10.750	117.320	1515.09	-9.45	-29.23	56.67	40°10'33.880"N	104°47'20.811"W	2.13	
1611.00	12.420	119.180	1605.22	-12.51	-38.00	72.93	40°10'33.794"N	104°47'20.601"W	1.86	
1702.00	13.670	119.870	1693.87	-16.35	-48.12	90.80	40°10'33.693"N	104°47'20.371"W	1.38	
1793.00	15.000	120.040	1782.03	-20.72	-59.37	110.32	40°10'33.582"N	104°47'20.120"W	1.46	
1879.00	14.760	119.970	1865.15	-25.03	-70.42	129.45	40°10'33.473"N	104°47'19.873"W	0.28	
1964.00	15.310	123.230	1947.24	-29.93	-81.98	148.21	40°10'33.359"N	104°47'19.632"W	1.19	
2049.00	14.970	121.900	2029.29	-35.23	-93.93	166.92	40°10'33.241"N	104°47'19.391"W	0.57	
2134.00	15.930	121.610	2111.22	-40.31	-105.84	186.18	40°10'33.123"N	104°47'19.143"W	1.13	
2219.00	15.220	120.270	2193.10	-45.13	-117.58	205.75	40°10'33.007"N	104°47'18.890"W	0.94	
2304.00	14.820	121.370	2275.19	-49.73	-128.86	224.67	40°10'32.896"N	104°47'18.647"W	0.58	
2389.00	15.200	119.340	2357.29	-54.14	-139.98	243.66	40°10'32.786"N	104°47'18.402"W	0.76	
2475.00	14.390	118.610	2440.44	-58.04	-150.63	262.87	40°10'32.681"N	104°47'18.155"W	0.97	
2560.00	15.090	117.610	2522.64	-61.55	-160.81	281.95	40°10'32.580"N	104°47'17.909"W	0.88	
2645.00	14.440	116.770	2604.83	-64.72	-170.71	301.21	40°10'32.482"N	104°47'17.661"W	0.81	
2731.00	15.030	116.060	2688.01	-67.63	-180.44	320.81	40°10'32.386"N	104°47'17.408"W	0.72	
2816.00	15.810	117.390	2769.95	-70.76	-190.61	340.99	40°10'32.285"N	104°47'17.148"W	1.01	
2901.00	17.450	118.460	2851.39	-74.65	-202.01	362.47	40°10'32.173"N	104°47'16.871"W	1.96	
2985.00	17.500	118.260	2931.51	-78.85	-213.99	384.67	40°10'32.054"N	104°47'16.585"W	0.09	
3071.00	17.520	118.430	3013.53	-83.15	-226.28	407.44	40°10'31.933"N	104°47'16.292"W	0.06	
3156.00	17.080	118.120	3094.68	-87.33	-238.25	429.70	40°10'31.815"N	104°47'16.005"W	0.53	
3241.00	16.600	117.760	3176.04	-91.26	-249.79	451.46	40°10'31.701"N	104°47'15.725"W	0.58	
3326.00	17.030	120.340	3257.40	-95.65	-261.73	472.95	40°10'31.583"N	104°47'15.448"W	1.01	
3412.00	16.150	120.760	3339.82	-100.66	-274.21	494.09	40°10'31.459"N	104°47'15.176"W	1.03	
3497.00	16.730	120.250	3421.35	-105.55	-286.42	514.82	40°10'31.339"N	104°47'14.909"W	0.70	
3582.00	16.050	119.680	3502.89	-110.21	-298.40	535.60	40°10'31.220"N	104°47'14.641"W	0.82	
3667.00	16.730	120.340	3584.44	-114.89	-310.40	556.36	40°10'31.102"N	104°47'14.374"W	0.83	
3753.00	15.880	120.250	3666.98	-119.72	-322.58	577.21	40°10'30.981"N	104°47'14.105"W	0.99	
3838.00	16.190	119.460	3748.67	-124.23	-334.27	597.57	40°10'30.866"N	104°47'13.843"W	0.45	



Actual Wellpath Report

WEISS 3N-33HZ AWP

Page 3 of 7



REFERENCE WELLPATH IDENTIFICATION

Operator	KERR-MCGEE OIL & GAS ONSHORE LP	Slot	SLOT#22 WEISS 3N-33HZ (712'FSL & 646'FWL, SEC.33)
Area	COLORADO	Well	WEISS 3N-33HZ
Field	WELD COUNTY (KERR MCGEE)	Wellbore	WEISS 3N-33HZ AWP
Facility	SEC.33-T3N-R66W		

WELLPATH DATA (156 stations)

MD [ft]	Inclination [°]	Azimuth [°]	TVD [ft]	Vert Sect [ft]	North [ft]	East [ft]	Latitude	Longitude	DLS [°/100ft]	Comments
3923.00	16.060	116.370	3830.33	-127.98	-345.32	618.43	40°10'30.756"N	104°47'13.574"W	1.02	
4008.00	16.440	117.290	3911.93	-131.32	-356.05	639.65	40°10'30.650"N	104°47'13.301"W	0.54	
4093.00	16.850	116.170	3993.37	-134.69	-367.00	661.40	40°10'30.542"N	104°47'13.020"W	0.61	
4176.00	16.740	116.750	4072.83	-137.90	-377.69	682.87	40°10'30.437"N	104°47'12.744"W	0.24	
4260.00	16.510	117.870	4153.32	-141.47	-388.71	704.22	40°10'30.328"N	104°47'12.469"W	0.47	
4345.00	16.480	118.660	4234.82	-145.45	-400.14	725.48	40°10'30.215"N	104°47'12.195"W	0.27	
4430.00	16.830	118.250	4316.25	-149.55	-411.75	746.89	40°10'30.100"N	104°47'11.919"W	0.43	
4515.00	15.790	119.600	4397.83	-153.75	-423.29	767.79	40°10'29.986"N	104°47'11.650"W	1.30	
4600.00	16.610	118.300	4479.46	-157.93	-434.76	788.54	40°10'29.873"N	104°47'11.383"W	1.05	
4686.00	16.470	117.170	4561.90	-161.75	-446.15	810.21	40°10'29.760"N	104°47'11.103"W	0.41	
4771.00	16.350	117.770	4643.44	-165.38	-457.23	831.52	40°10'29.651"N	104°47'10.829"W	0.24	
4854.00	16.860	116.760	4722.98	-168.88	-468.09	852.60	40°10'29.543"N	104°47'10.557"W	0.71	
4939.00	16.120	117.280	4804.48	-172.34	-479.05	874.10	40°10'29.435"N	104°47'10.280"W	0.89	
5024.00	16.570	116.300	4886.04	-175.68	-489.83	895.45	40°10'29.328"N	104°47'10.005"W	0.62	
5109.00	16.820	115.380	4967.46	-178.68	-500.47	917.43	40°10'29.223"N	104°47'09.722"W	0.43	
5194.00	17.660	114.960	5048.64	-181.49	-511.18	940.23	40°10'29.117"N	104°47'09.428"W	1.00	
5279.00	17.300	115.200	5129.72	-184.30	-522.00	963.35	40°10'29.010"N	104°47'09.131"W	0.43	
5363.00	16.660	115.500	5210.05	-187.11	-532.51	985.52	40°10'28.907"N	104°47'08.845"W	0.77	
5448.00	15.640	116.130	5291.70	-190.00	-542.80	1006.81	40°10'28.805"N	104°47'08.571"W	1.22	
5534.00	14.920	116.450	5374.66	-192.97	-552.83	1027.13	40°10'28.706"N	104°47'08.309"W	0.84	
5618.00	14.310	116.840	5455.94	-195.87	-562.34	1046.07	40°10'28.612"N	104°47'08.065"W	0.74	
5704.00	13.490	118.070	5539.42	-198.99	-571.86	1064.41	40°10'28.518"N	104°47'07.829"W	1.01	
5789.00	12.510	118.830	5622.24	-202.20	-580.96	1081.22	40°10'28.428"N	104°47'07.612"W	1.17	
5874.00	10.920	115.670	5705.47	-204.77	-588.89	1096.54	40°10'28.349"N	104°47'07.415"W	2.02	
5959.00	9.970	115.770	5789.06	-206.64	-595.58	1110.42	40°10'28.283"N	104°47'07.236"W	1.12	
6044.00	8.190	118.190	5872.99	-208.53	-601.64	1122.39	40°10'28.223"N	104°47'07.082"W	2.14	
6128.00	7.010	120.120	5956.25	-210.51	-607.03	1132.10	40°10'28.170"N	104°47'06.957"W	1.44	
6213.00	6.120	122.820	6040.69	-212.63	-612.09	1140.39	40°10'28.120"N	104°47'06.850"W	1.11	
6297.00	5.650	125.310	6124.25	-214.90	-616.91	1147.53	40°10'28.072"N	104°47'06.758"W	0.64	
6382.00	5.370	127.520	6208.86	-217.37	-621.75	1154.10	40°10'28.025"N	104°47'06.673"W	0.41	
6467.00	4.500	128.590	6293.54	-219.78	-626.25	1159.86	40°10'27.980"N	104°47'06.599"W	1.03	
6552.00	4.100	131.300	6378.30	-222.07	-630.34	1164.75	40°10'27.940"N	104°47'06.536"W	0.53	
6637.00	3.950	136.430	6463.09	-224.60	-634.46	1169.05	40°10'27.899"N	104°47'06.481"W	0.46	
6699.00	3.500	135.710	6524.96	-226.45	-637.37	1171.84	40°10'27.870"N	104°47'06.445"W	0.73	
6724.00	3.420	135.940	6549.92	-227.13	-638.45	1172.89	40°10'27.860"N	104°47'06.431"W	0.32	
6767.00	3.930	105.580	6592.83	-227.64	-639.77	1175.20	40°10'27.847"N	104°47'06.401"W	4.62	
6810.00	7.870	73.150	6635.61	-225.84	-639.31	1179.44	40°10'27.851"N	104°47'06.347"W	11.66	
6852.00	10.870	46.830	6677.06	-220.67	-635.76	1185.09	40°10'27.886"N	104°47'06.274"W	12.28	
6895.00	13.740	24.430	6719.09	-212.00	-628.33	1190.16	40°10'27.960"N	104°47'06.209"W	12.83	
6937.00	17.390	6.780	6759.57	-200.89	-617.55	1192.97	40°10'28.066"N	104°47'06.173"W	14.14	
6980.00	20.940	3.180	6800.18	-187.20	-603.49	1194.15	40°10'28.205"N	104°47'06.157"W	8.70	
7022.00	22.740	1.940	6839.16	-172.19	-587.89	1194.84	40°10'28.359"N	104°47'06.148"W	4.42	
7065.00	26.630	2.150	6878.23	-155.00	-569.94	1195.49	40°10'28.537"N	104°47'06.140"W	9.05	
7107.00	29.830	1.950	6915.23	-135.98	-550.09	1196.20	40°10'28.733"N	104°47'06.131"W	7.62	
7150.00	33.520	4.820	6951.82	-114.21	-527.56	1197.56	40°10'28.955"N	104°47'06.113"W	9.27	



Actual Wellpath Report

WEISS 3N-33HZ AWP

Page 4 of 7



REFERENCE WELLPATH IDENTIFICATION

Operator	KERR-MCGEE OIL & GAS ONSHORE LP	Slot	SLOT#22 WEISS 3N-33HZ (712'FSL & 646'FWL, SEC.33)
Area	COLORADO	Well	WEISS 3N-33HZ
Field	WELD COUNTY (KERR MCGEE)	Wellbore	WEISS 3N-33HZ AWB
Facility	SEC.33-T3N-R66W		

WELLPATH DATA (156 stations) † = interpolated/extrapolated station

MD [ft]	Inclination [°]	Azimuth [°]	TVD [ft]	Vert Sect [ft]	North [ft]	East [ft]	Latitude	Longitude	DLS [°/100ft]	Comments
7192.00	34.970	7.250	6986.54	-91.16	-504.06	1200.05	40°10'29.188"N	104°47'06.081"W	4.74	
7234.00	37.180	4.100	7020.48	-67.08	-479.46	1202.48	40°10'29.431"N	104°47'06.050"W	6.87	
7277.00	40.410	3.580	7053.99	-41.05	-452.58	1204.28	40°10'29.696"N	104°47'06.027"W	7.55	
7319.00	44.250	1.230	7085.04	-13.93	-424.33	1205.44	40°10'29.975"N	104°47'06.012"W	9.89	
7360.00	49.490	0.810	7113.06	14.56	-394.43	1205.97	40°10'30.271"N	104°47'06.005"W	12.80	
7403.00	54.910	1.280	7139.40	46.91	-360.47	1206.59	40°10'30.607"N	104°47'05.997"W	12.63	
7445.00	61.080	1.320	7161.65	80.87	-324.88	1207.40	40°10'30.958"N	104°47'05.986"W	14.69	
7488.00	66.680	2.280	7180.58	117.78	-286.31	1208.62	40°10'31.339"N	104°47'05.971"W	13.18	
7530.00	70.020	3.280	7196.07	155.30	-247.32	1210.52	40°10'31.725"N	104°47'05.946"W	8.25	
7573.00	73.000	3.520	7209.70	194.62	-206.62	1212.94	40°10'32.127"N	104°47'05.915"W	6.95	
7615.00	74.830	3.250	7221.34	233.53	-166.33	1215.32	40°10'32.525"N	104°47'05.884"W	4.40	
7658.00	77.000	1.080	7231.81	273.49	-124.66	1216.89	40°10'32.937"N	104°47'05.864"W	7.03	
7701.00	79.780	0.060	7240.46	313.50	-82.55	1217.31	40°10'33.353"N	104°47'05.859"W	6.87	
7743.00	83.450	359.170	7246.58	352.74	-41.01	1217.03	40°10'33.763"N	104°47'05.862"W	8.99	
7786.00	86.640	0.130	7250.30	393.21	1.83	1216.77	40°10'34.187"N	104°47'05.866"W	7.74	
7823.00	88.670	0.500	7251.81	428.28	38.79	1216.97	40°10'34.552"N	104°47'05.863"W	5.58	
7854.00	89.040	0.500	7252.43	457.71	69.79	1217.24	40°10'34.858"N	104°47'05.859"W	1.19	
7855.00†	89.032	0.507	7252.45	458.66	70.79	1217.25	40°10'34.868"N	104°47'05.859"W	1.05	7" Casing Point
7923.00	88.480	0.960	7253.92	523.31	138.76	1218.12	40°10'35.540"N	104°47'05.848"W	1.05	
8009.00	89.960	0.860	7255.09	605.15	224.74	1219.49	40°10'36.390"N	104°47'05.830"W	1.72	
8094.00	89.930	0.570	7255.18	685.97	309.74	1220.55	40°10'37.230"N	104°47'05.817"W	0.34	
8179.00	90.060	359.350	7255.18	766.43	394.73	1220.49	40°10'38.069"N	104°47'05.817"W	1.44	
8263.00	90.000	359.980	7255.14	845.80	478.73	1220.00	40°10'38.900"N	104°47'05.824"W	0.75	
8348.00	89.780	358.850	7255.30	926.00	563.73	1219.13	40°10'39.739"N	104°47'05.835"W	1.35	
8434.00	89.960	1.400	7255.50	1007.48	649.72	1219.32	40°10'40.589"N	104°47'05.832"W	2.97	
8519.00	89.870	1.030	7255.62	1088.52	734.70	1221.12	40°10'41.429"N	104°47'05.809"W	0.45	
8604.00	90.180	1.250	7255.59	1169.53	819.68	1222.81	40°10'42.269"N	104°47'05.787"W	0.45	
8689.00	90.360	1.650	7255.19	1250.67	904.65	1224.96	40°10'43.109"N	104°47'05.759"W	0.52	
8775.00	90.490	1.040	7254.55	1332.72	990.63	1226.98	40°10'43.958"N	104°47'05.733"W	0.73	
8860.00	90.490	0.820	7253.82	1413.63	1075.61	1228.36	40°10'44.798"N	104°47'05.716"W	0.26	
8945.00	90.580	1.270	7253.03	1494.60	1160.59	1229.91	40°10'45.638"N	104°47'05.696"W	0.54	
9031.00	90.670	1.210	7252.09	1576.60	1246.57	1231.77	40°10'46.487"N	104°47'05.672"W	0.13	
9116.00	89.810	0.830	7251.73	1657.55	1331.55	1233.28	40°10'47.327"N	104°47'05.652"W	1.11	
9201.00	89.810	0.560	7252.01	1738.36	1416.55	1234.31	40°10'48.167"N	104°47'05.639"W	0.32	
9286.00	89.690	0.050	7252.39	1818.98	1501.55	1234.77	40°10'49.007"N	104°47'05.633"W	0.62	
9370.00	89.350	359.800	7253.09	1898.48	1585.54	1234.66	40°10'49.837"N	104°47'05.634"W	0.50	
9454.00	89.290	359.530	7254.09	1977.84	1669.53	1234.17	40°10'50.667"N	104°47'05.640"W	0.33	
9538.00	90.180	2.010	7254.47	2057.73	1753.52	1235.29	40°10'51.497"N	104°47'05.626"W	3.14	
9623.00	90.280	3.650	7254.13	2139.45	1838.41	1239.49	40°10'52.336"N	104°47'05.572"W	1.93	
9708.00	90.770	4.650	7253.35	2221.70	1923.18	1245.64	40°10'53.174"N	104°47'05.492"W	1.31	
9793.00	91.010	5.150	7252.03	2304.21	2007.86	1252.90	40°10'54.010"N	104°47'05.399"W	0.65	
9878.00	90.920	5.120	7250.60	2386.80	2092.51	1260.51	40°10'54.847"N	104°47'05.301"W	0.11	
9963.00	90.150	6.390	7249.81	2469.61	2177.07	1269.03	40°10'55.683"N	104°47'05.191"W	1.75	
10048.00	88.370	6.560	7250.91	2552.66	2261.52	1278.62	40°10'56.517"N	104°47'05.067"W	2.10	
10132.00	88.400	7.580	7253.27	2634.88	2344.85	1288.95	40°10'57.341"N	104°47'04.934"W	1.21	



Actual Wellpath Report

WEISS 3N-33HZ AWP

Page 5 of 7



REFERENCE WELLPATH IDENTIFICATION

Operator	KERR-MCGEE OIL & GAS ONSHORE LP	Slot	SLOT#22 WEISS 3N-33HZ (712'FSL & 646'FWL, SEC.33)
Area	COLORADO	Well	WEISS 3N-33HZ
Field	WELD COUNTY (KERR MCGEE)	Wellbore	WEISS 3N-33HZ AWB
Facility	SEC.33-T3N-R66W		

WELLPATH DATA (156 stations)

MD [ft]	Inclination [°]	Azimuth [°]	TVD [ft]	Vert Sect [ft]	North [ft]	East [ft]	Latitude	Longitude	DLS [°/100ft]	Comments
10217.00	89.050	7.550	7255.17	2718.24	2429.09	1300.14	40°10'58.173"N	104°47'04.790"W	0.77	
10302.00	90.150	7.420	7255.76	2801.59	2513.36	1311.21	40°10'59.006"N	104°47'04.647"W	1.30	
10387.00	89.690	6.490	7255.88	2884.79	2597.73	1321.50	40°10'59.839"N	104°47'04.515"W	1.22	
10472.00	89.350	5.820	7256.59	2967.73	2682.24	1330.62	40°11'00.675"N	104°47'04.397"W	0.88	
10557.00	90.300	5.590	7256.85	3050.53	2766.82	1339.06	40°11'01.510"N	104°47'04.288"W	1.15	
10641.00	90.430	5.570	7256.31	3132.31	2850.42	1347.23	40°11'02.337"N	104°47'04.183"W	0.16	
10726.00	90.090	5.330	7255.93	3215.03	2935.03	1355.31	40°11'03.173"N	104°47'04.079"W	0.49	
10811.00	89.720	5.380	7256.07	3297.71	3019.66	1363.24	40°11'04.009"N	104°47'03.977"W	0.44	
10896.00	89.720	5.460	7256.49	3380.41	3104.28	1371.27	40°11'04.845"N	104°47'03.873"W	0.09	
10981.00	90.920	4.000	7256.01	3462.87	3188.99	1378.28	40°11'05.682"N	104°47'03.783"W	2.22	
11067.00	91.570	2.110	7254.14	3545.63	3274.84	1382.86	40°11'06.531"N	104°47'03.724"W	2.32	
11152.00	91.350	0.670	7251.98	3626.72	3359.78	1384.92	40°11'07.370"N	104°47'03.697"W	1.71	
11237.00	91.100	0.920	7250.16	3707.56	3444.76	1386.10	40°11'08.210"N	104°47'03.682"W	0.42	
11321.00	90.950	1.060	7248.66	3787.53	3528.73	1387.55	40°11'09.040"N	104°47'03.663"W	0.24	
11406.00	90.150	0.520	7247.84	3868.38	3613.72	1388.72	40°11'09.879"N	104°47'03.648"W	1.14	
11491.00	89.630	359.930	7248.00	3948.96	3698.72	1389.05	40°11'10.719"N	104°47'03.643"W	0.93	
11575.00	89.930	0.260	7248.33	4028.54	3782.71	1389.19	40°11'11.549"N	104°47'03.642"W	0.53	
11659.00	89.870	0.510	7248.47	4108.25	3866.71	1389.76	40°11'12.380"N	104°47'03.634"W	0.31	
11744.00	88.850	359.430	7249.42	4188.71	3951.70	1389.71	40°11'13.219"N	104°47'03.635"W	1.75	
11818.00	88.420	359.410	7251.18	4258.51	4025.68	1388.97	40°11'13.950"N	104°47'03.644"W	0.58	Last BHI MWD Survey
11878.00	88.420	359.410	7252.84	4315.10	4085.65	1388.35	40°11'14.543"N	104°47'03.652"W	0.00	Projection to Bit

HOLE & CASING SECTIONS - Ref Wellbore: WEISS 3N-33HZ AWB Ref Wellpath: WEISS 3N-33HZ AWP

String/Diameter	Start MD [ft]	End MD [ft]	Interval [ft]	Start TVD [ft]	End TVD [ft]	Start N/S [ft]	Start E/W [ft]	End N/S [ft]	End E/W [ft]
13.5in Open Hole	17.00	673.00	656.00	17.00	673.00	0.00	0.00	-0.09	-2.00
9.625in Casing Surface	17.00	673.00	656.00	17.00	673.00	0.00	0.00	-0.09	-2.00
8.75in Open Hole	673.00	7866.00	7193.00	673.00	7252.64	-0.09	-2.00	81.78	1217.36
7in Casing Intermediate	17.00	7855.00	7838.00	17.00	7252.45	0.00	0.00	70.79	1217.25
6.125in Open Hole	7855.00	11878.00	4023.00	7252.45	7252.84	70.79	1217.25	4085.65	1388.35



Actual Wellpath Report

WEISS 3N-33HZ AWP

Page 6 of 7



REFERENCE WELLPATH IDENTIFICATION			
Operator	KERR-MCGEE OIL & GAS ONSHORE LP	Slot	SLOT#22 WEISS 3N-33HZ (712'FSL & 646'FWL, SEC.33)
Area	COLORADO	Well	WEISS 3N-33HZ
Field	WELD COUNTY (KERR MCGEE)	Wellbore	WEISS 3N-33HZ AWB
Facility	SEC.33-T3N-R66W		

TARGETS									
Name	MD [ft]	TVD [ft]	North [ft]	East [ft]	Grid East [US ft]	Grid North [US ft]	Latitude	Longitude	Shape
RICE 15-33HZ PAD SECTION LINES		-27.00	-74.24	2605.50	3201189.88	1307759.68	40°10'33.434"N	104°46'47.975"W	polygon
RICE 15-33HZ PAD HARDLINES (460' SETBACKS)		7151.00	-74.24	2605.50	3201189.88	1307759.68	40°10'33.434"N	104°46'47.975"W	polygon
WEISS 3N-33HZ BHL ON PLAT (460'FNL & 2020'FWL, SEC.33) REV-2		7236.00	4110.74	1380.22	3199931.16	1311934.52	40°11'14.791"N	104°47'03.757"W	point
WEISS 3N-33HZ BHL ON PLAT (460'FNL & 2020'FWL, SEC.33) REV-1		7240.00	4110.74	1380.22	3199931.16	1311934.52	40°11'14.791"N	104°47'03.757"W	point

WELLPATH COMPOSITION - Ref Wellbore: WEISS 3N-33HZ AWB Ref Wellpath: WEISS 3N-33HZ AWP				
Start MD [ft]	End MD [ft]	Positional Uncertainty Model	Log Name/Comment	Wellbore
17.00	880.00	Generic gyro - continuous (Standard)	GYRODATA SURVEYS <116-880>	WEISS 3N-33HZ AWB
880.00	7823.00	NaviTrak (Standard)	BHI MWD SURVEYS 8 3/4" HOLE <971-7823>	WEISS 3N-33HZ AWB
7823.00	11818.00	OnTrak (Standard)	BHI MWD SURVEYS 6 1/8" HOLE <7854-11818>	WEISS 3N-33HZ AWB
11818.00	11878.00	Blind Drilling (std)	Projection to bit	WEISS 3N-33HZ AWB



Actual Wellpath Report

WEISS 3N-33HZ AWP

Page 7 of 7



REFERENCE WELLPATH IDENTIFICATION			
Operator	KERR-MCGEE OIL & GAS ONSHORE LP	Slot	SLOT#22 WEISS 3N-33HZ (712'FSL & 646'FWL, SEC.33)
Area	COLORADO	Well	WEISS 3N-33HZ
Field	WELD COUNTY (KERR MCGEE)	Wellbore	WEISS 3N-33HZ AWB
Facility	SEC.33-T3N-R66W		

WELLPATH COMMENTS				
MD [ft]	Inclination [°]	Azimuth [°]	TVD [ft]	Comment
17.00	0.000	251.150	17.00	Tie-On
116.00	0.240	251.150	116.00	Begin GYRO Surveys
880.00	1.360	118.130	879.99	Tie-Into GYRO Surveys
971.00	2.800	114.100	970.92	Begin BHI MWD Surveys
7855.00	89.032	0.507	7252.45	7" Casing Point
11818.00	88.420	359.410	7251.18	Last BHI MWD Survey
11878.00	88.420	359.410	7252.84	Projection to Bit