

HALLIBURTON

WPX ENERGY ROCKY MOUNTAIN LLC-EBUS

**BCU 43-36-199
SULPHUR CREEK
Rio Blanco County , Colorado**

Cement Multiple Stages
08-Jul-2012

Post Job Report

The Road to Excellence Starts with Safety

Sold To #: 300721	Ship To #: 2934788	Quote #:	Sales Order #: 9610248
Customer: WPX ENERGY ROCKY MOUNTAIN LLC-EBUS	Customer Rep: Brunk, Andrew		
Well Name: BCU	Well #: 43-36-199	API/UWI #: 05-103-11849	
Field: SULPHUR CREEK	City (SAP): MEEKER	County/Parish: Rio Blanco	State: Colorado
Lat: N 40.015 deg. OR N 40 deg. 0 min. 52.438 secs.	Long: E 108.442 deg. OR E 108 deg. 26 min. 29.922 secs.		
Contractor: CYCLONE 29	Rig/Platform Name/Num: CYCLONE 29		
Job Purpose: Cement Multiple Stages			
Well Type: Development Well	Job Type: Cement Multiple Stages		
Sales Person: SCOTT, KYLE	Srv Supervisor: SLAUGHTER, JESSE	MBU ID Emp #: 454315	

Job Personnel

HES Emp Name	Exp Hrs	Emp #	HES Emp Name	Exp Hrs	Emp #	HES Emp Name	Exp Hrs	Emp #
BURKE, BRENDAN Patrick	9.5	487782	GOWEN, WESLEY M	9.5	496205	KUKUS, CARLTON Dean	9.5	458577
LYNGSTAD, FREDRICK D	9.5	403742	SLAUGHTER, JESSE Dean	9.5	454315			

Equipment

HES Unit #	Distance-1 way	HES Unit #	Distance-1 way	HES Unit #	Distance-1 way	HES Unit #	Distance-1 way
10533645	30 mile	10783493	30 mile	10822007	30 mile	10876398	30 mile
10938673	30 mile	10988978	30 mile	11139328	30 mile	11259881	30 mile
11542767	30 mile	11808835	30 mile	4902	30 mile	4905	30 mile

Job Hours

Date	On Location Hours	Operating Hours	Date	On Location Hours	Operating Hours	Date	On Location Hours	Operating Hours
7-8-2012	9.5	6						

TOTAL Total is the sum of each column separately

Job

Formation Name	Top	Bottom	Called Out	Date	Time	Time Zone
Formation Depth (MD)			On Location	07 - Jul - 2012	19:00	MST
Form Type		BHST	Job Started	08 - Jul - 2012	02:30	MST
Job depth MD	3262. ft	Job Depth TVD	Job Completed	08 - Jul - 2012	06:41	MST
Water Depth		Wk Ht Above Floor	Departed Loc	08 - Jul - 2012	10:02	GMT
Perforation Depth (MD)	From	To			12:00	MST

Well Data

Description	New / Used	Max pressure psig	Size in	ID in	Weight lbm/ft	Thread	Grade	Top MD ft	Bottom MD ft	Top TVD ft	Bottom TVD ft
-------------	------------	-------------------	---------	-------	---------------	--------	-------	-----------	--------------	------------	---------------

Sales/Rental/3rd Party (HES)

Description	Qty	Qty uom	Depth	Supplier
PORT. DATA ACQUIS. W/OPTICEM RT W/HES	1	EA		
R/A DENSOMETER W/CHART RECORDER,/JOB,ZI	1	JOB		
ADC (AUTO DENSITY CTRL) SYS, /JOB,ZI	1	JOB		
PLUG,CMTG,TOP,9 5/8,HWE,8.16 MIN/9.06 MA	1	EA		

Tools and Accessories

Type	Size	Qty	Make	Depth	Type	Size	Qty	Make	Depth	Type	Size	Qty	Make
Guide Shoe					Packer					Top Plug			
Float Shoe					Bridge Plug					Bottom Plug			
Float Collar					Retainer					SSR plug set	9.625	1	HES
Insert Float										Plug Container	9.625	1	HES
Stage Tool	9.625	1		1248.1						Centralizers			

Miscellaneous Materials

Gelling Agt	Conc	Surfactant	Conc	Acid Type	Qty	Conc	%
Treatment Fld	Conc	Inhibitor	Conc	Sand Type	Size	Qty	

Fluid Data

Stage/Plug #: 1									
Fluid #	Stage Type	Fluid Name	Qty	Qty uom	Mixing Density lbm/gal	Yield ft ³ /sk	Mix Fluid Gal/sk	Rate bbl/min	Total Mix Fluid Gal/sk
1	Fresh Water Spacer	FRESH WATER	20.00	bbl	8.33	.0	.0	4	
2	1st Stage Lead Cement	VERSACEM (TM) SYSTEM (452010)	545.0	sacks	12.8	1.77	9.34	6	9.34
	0.25 lbm	POLY-E-FLAKE (101216940)							
	0.25 %	HR-5, 50 LB SK (100005050)							
	0.125 lbm	TUF FIBER 594, 15 LB BOX (101350514)							
	9.34 Gal	FRESH WATER							
3	1st Stage Tail Cement	VERSACEM (TM) SYSTEM (452010)	165.0	sacks	12.8	1.96	10.95	6	10.95
	0.25 lbm	POLY-E-FLAKE (101216940)							
	10.95 Gal	FRESH WATER							
4	Displacement	FRESH WATER	252.2	bbl	8.33	.0	.0	8	
5	Fresh Water Spacer	FRESH WATER	20.00	bbl	8.33	.0	.0	4	
6	2nd Stage Tail Cement	VERSACEM (TM) SYSTEM (452010)	645.0	sacks	12.8	1.96	10.95	6	10.95
	0.25 lbm	POLY-E-FLAKE (101216940)							
	10.95 Gal	FRESH WATER							
7	Displacement	FRESH WATER	96.5	bbl	8.33	.0	.0	8	
Calculated Values		Pressures		Volumes					
Displacement	252.2	Shut In: Instant		Lost Returns	NO	Cement Slurry	455	Pad	
Top Of Cement	SURFACE	5 Min		Cement Returns	56	Actual Displacement	252.2	Treatment	
Frac Gradient		15 Min		Spacers	40	Load and Breakdown		Total Job	845
Rates									
Circulating	7	Mixing	6	Displacement	8	Avg. Job	7		
Cement Left In Pipe	Amount	0 ft	Reason	Shoe Joint					
Frac Ring # 1 @	ID	Frac ring # 2 @	ID	Frac Ring # 3 @	ID	Frac Ring # 4 @	ID		
The Information Stated Herein Is Correct				Customer Representative Signature					

The Road to Excellence Starts with Safety

Sold To #: 300721	Ship To #: 2934788	Quote #:	Sales Order #: 9610248
Customer: WPX ENERGY ROCKY MOUNTAIN LLC-EBUS	Customer Rep: Brunk, Andrew		
Well Name: BCU	Well #: 43-36-199	API/UWI #: 05-103-11849	
Field: SULPHUR CREEK	City (SAP): MEEKER	County/Parish: Rio Blanco	State: Colorado
Legal Description:			
Lat: N 40.015 deg. OR N 40 deg. 0 min. 52.438 secs.		Long: E 108.442 deg. OR E 108 deg. 26 min. 29.922 secs.	
Contractor: CYCLONE 29	Rig/Platform Name/Num: CYCLONE 29		
Job Purpose: Cement Multiple Stages	Ticket Amount:		
Well Type: Development Well	Job Type: Cement Multiple Stages		
Sales Person: SCOTT, KYLE	Srvs Supervisor: SLAUGHTER, JESSE	MBU ID Emp #: 454315	

Activity Description	Date/Time	Cht #	Rate bbl/ min	Volume bbl		Pressure psig		Comments
				Stage	Total	Tubing	Casing	
Call Out	07/07/2012 19:00							TD 3305 FT, TP 3293.88 FT, SHOE 26.30 FT, MSC TOOL SET AT 1248.1 FT, CSG 9 5/8 IN 36 LB/FT, HOLE 14 7/8 IN DRILLED TO 1300 FT 13 1/2 IN TO TD, MUD WT 8.6 PPG
Pre-Convoy Safety Meeting	07/07/2012 22:20							WITH ALL HES PERSONNEL
Crew Leave Yard	07/07/2012 22:30							
Arrive At Loc	07/08/2012 02:30							RIG WAS RUNNING CASING UPON HES ARRIVAL
Assessment Of Location Safety Meeting	07/08/2012 04:30							WITH ALL HES PERSONNEL
Other	07/08/2012 04:40							SPOT EQUIPMENT
Pre-Rig Up Safety Meeting	07/08/2012 04:50							WITH ALL HES PERSONNEL
Rig-Up Equipment	07/08/2012 05:00							MSC TOOL AND PLUG SET PROVIDED BY WEATHERFORD, NO WEATHERFORD HAND ON SITE HES RAN PLUG SET
Pre-Job Safety Meeting	07/08/2012 06:30							WITH ALL PERSONNEL ON LOCATION
Start Job	07/08/2012 06:41							STAGE 1
Other	07/08/2012 06:41		2	2			115.0	FILL LINES WITH FRESH WATER
Activity Description	Date/Time	Cht	Rate bbl/ min	Volume bbl		Pressure psig		Comments

Sold To #: 300721

Ship To #: 2934788

Quote #:

Sales Order #:

9610248

SUMMIT Version: 7.3.0030

Friday, December 28, 2012 02:24:00

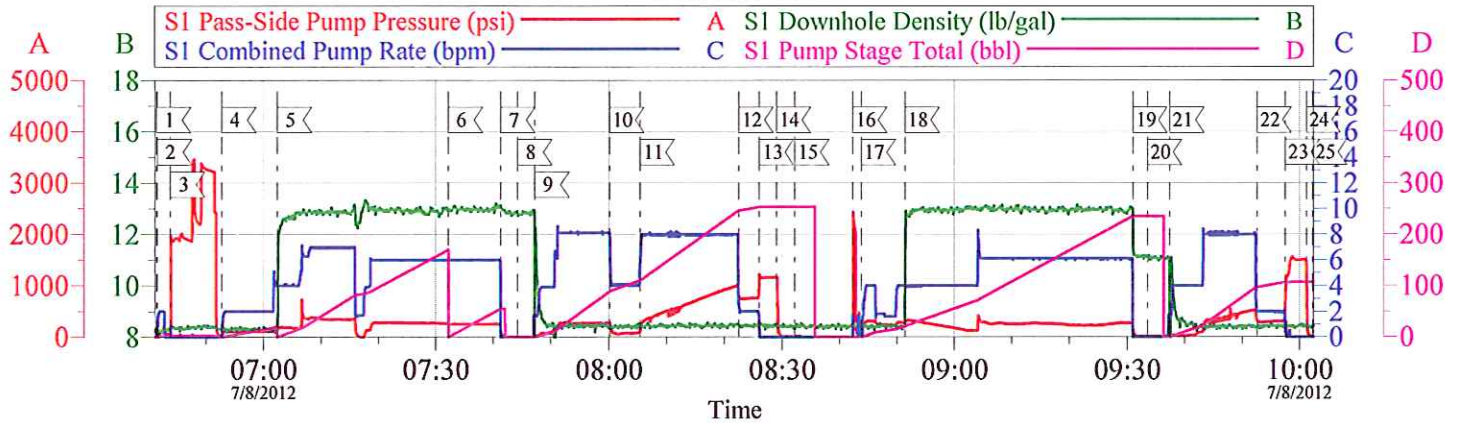
		#		Stage	Total	Tubing	Casing	
Test Lines	07/08/2012 06:43							TESTED LINES TO 3447 PSI PRESSURE HOLDING
Pump Spacer	07/08/2012 06:52		4	20			157.0	FRESH WATER
Pump Lead Cement	07/08/2012 07:02		6	171.8			257.0	545 SKS AT 12.8 PPG, 1.77 FT3/SK, 9.34 GAL/SK. HES PUT 45 LB TUFF FIBER IN FIRST 100 BBL CEMENT AS PER COMPANY REP
Pump Tail Cement	07/08/2012 07:32		6	57.6			269.0	165 SKS AT 12.8 PPG, 1.96 FT3/SK, 10.95 GAL/SK
Shutdown	07/08/2012 07:41							
Drop Plug	07/08/2012 07:44							DROP WIPER DART. PLUG LAUNCHED
Pump Displacement	07/08/2012 07:47		8	86			270.0	FRESH WATER
Slow Rate	07/08/2012 08:00		4	106			82.0	SLOWED RATE AT86 BBL GONE FOR WIPER DART TO PASS THROUGH MSC TOOL
Resume	07/08/2012 08:05		8	116			746.0	RESUMED RATE AT 116 BBL GONE ONCE ESTABLISHED PLUG WAS THROUGH
Slow Rate	07/08/2012 08:22		2	242.6			746.0	SLOWED RATE 10 BBL PRIOR TO CALCULATED DISPLACEMENT
Bump Plug	07/08/2012 08:26		2		252.6		1155. 0	PLUG BUMPED
Check Floats	07/08/2012 08:29							FLOATS HOLDING. HES RETURNED 1 BBL H2O TO PUMP. PRIOR TO BUMPING PLUG HES RETURNED TRACE AMOUNT CEMENT TO SURFACE
Drop Opening Device For Multiple Stage Cementer	07/08/2012 08:32							DROP BOMB WAIT 10 MINUTES
Open Multiple Stage Cementer	07/08/2012 08:42						700.0	MSC TOOL PRESSURED UP TO 700 PSI. ONCE HES OPENED TOOL STARTED TO PUMP THE SECOND STAGE AS PER COMPANY REP

Cementing Job Log

Activity Description	Date/Time	Cht #	Rate bbl/min	Volume bbl		Pressure psig		Comments
				Stage	Total	Tubing	Casing	
Pump Spacer	07/08/2012 08:43		4	20			280.0	FRESH WATER
Pump Tail Cement	07/08/2012 08:51		6	225.2			234.0	645 SKS AT 12.8 PPG, 1.96 FT3/SK, 10.95 GAL/SK. HES PUT 30 LB TUFF FIBER IN LAST 100 BBL OF CEMENT AS PER COMPANY REP
Shutdown	07/08/2012 09:31							
Drop Plug	07/08/2012 09:33							DROP MSC TOOL CLOSING DEVICE. PLUG LAUNCHED
Pump Displacement	07/08/2012 09:37		8	86.5			512.0	FRESH WATER
Slow Rate	07/08/2012 09:52		2	10			311.0	SLOW RATE PRIOR TO CALCULATED DISPLACEMENT
Bump Plug	07/08/2012 09:57		2		96.5		1500.0	PLUG BUMPED
Close Multiple Stage Cementer	07/08/2012 09:57							MSC TOOL CLOSED AT 1200 PSI
Release Casing Pressure	07/08/2012 10:01							RELEASED CASING PRESSURE HES RETURNED 1 BBL H2O TO PUMP
End Job	07/08/2012 10:02							PIPE WAS STATIC DURING JOB, GOOD CIRCULATION THROUGHOUT JOB. HES RETURNED 56 BBL CEMENT TO SURFACE
Pre-Rig Down Safety Meeting	07/08/2012 10:10							WITH ALL HES PERSONNEL
Rig-Down Equipment	07/08/2012 10:20							
Pre-Convoy Safety Meeting	07/08/2012 11:50							WITH ALL HES PERSONNEL
Crew Leave Location	07/08/2012 12:00							
Comment	07/08/2012 12:01							THANK YOU FOR USING HALLIBURTON CEMENT DEPARTMENT JESSE SLAUGHTER AND CREW

WPX BCU 43-36-199

9 5/8 2-STAGE



Local Event Log

1 START JOB	06:41:26	2 PRIME LINES	06:41:35
3 TEST LINES	06:43:51	4 PUMP H2O SPACER	06:52:47
5 PUMP LEAD CEMENT	07:02:26	6 PUMP TAIL CEMENT	07:32:13
7 SHUTDOWN	07:41:18	8 DROP WIPER DART	07:44:15
9 PUMP DISPLACEMENT	07:47:13	10 SLOW RATE TO PASS THROUGH TOOL	08:00:08
11 RESUME RATE	08:05:25	12 SLOW RATE	08:22:32
13 BUMP PLUG	08:26:06	14 CHECK FLOATS	08:29:03
15 DROP OPENING DEVICE	08:32:15	16 OPEN TOOL	08:42:20
17 PUMP SPACER	08:43:48	18 PUMP TAIL CEMENT	08:51:26
19 SHUTDOWN	09:31:00	20 DROP MSC CLOSING DEVICE	09:33:32
21 PUMP DISPLACEMENT	09:37:24	22 SLOW RATE	09:52:37
23 CLOSE TOOL	09:57:33	24 CHECK TOOL	10:01:13
25 END JOB	10:02:19		

Customer: WPX
Well Description: BCU 43-36-199
Customer Rep: TED RAGSDALE

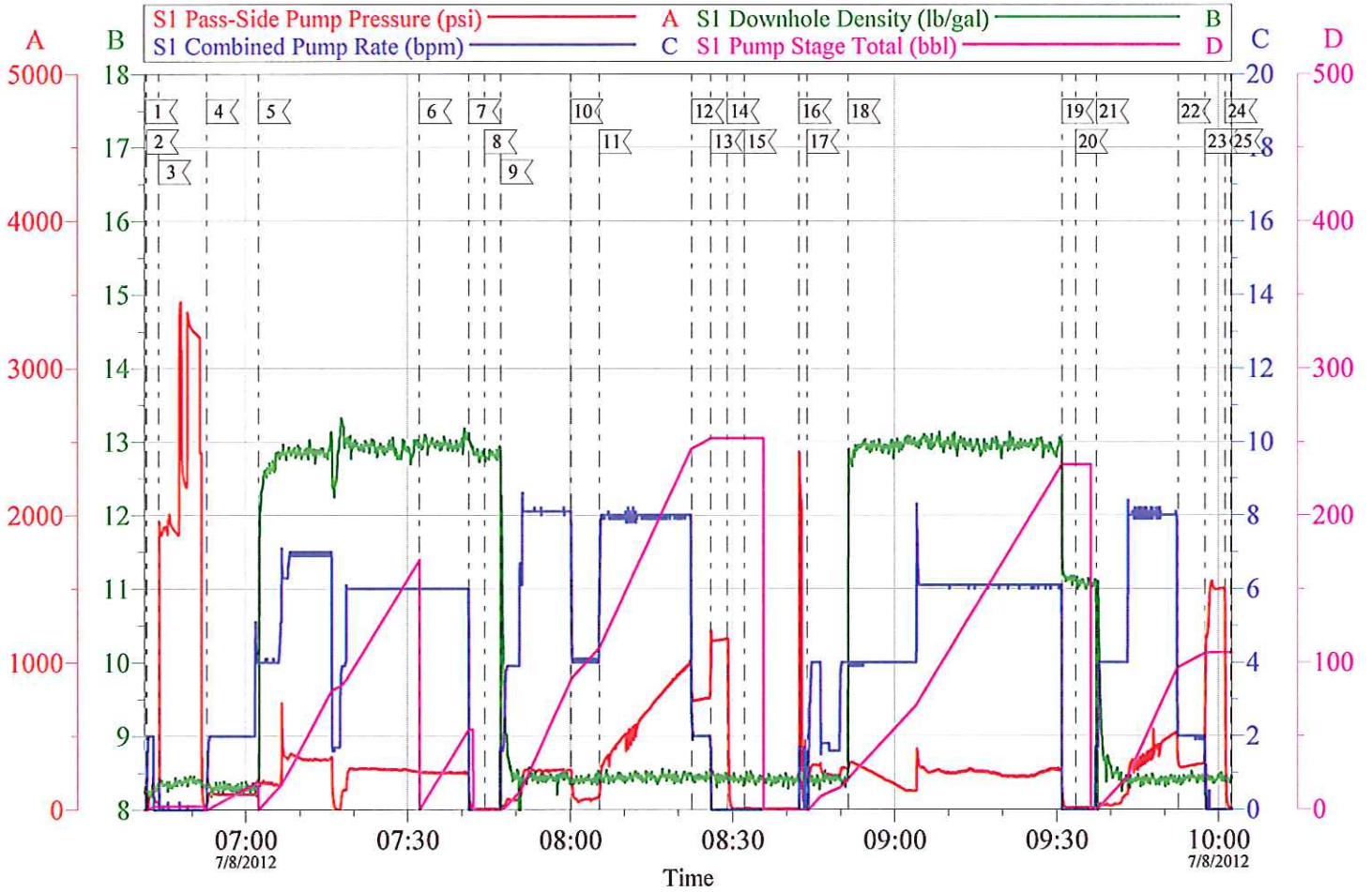
Job Date: 08-Jul-2012
Job Type: 2 STAGE
Cement Supervisor: JESSE SLAUGHTER

Sales Order #: 9610248
ADC Used: YES
Elite #1: WESLEY GOWEN

OptiCem v6.4.10
08-Jul-12 10:10

WPX BCU 43-36-199

9 5/8 2-STAGE



Customer: WPX	Job Date: 08-Jul-2012	Sales Order #: 9610248
Well Description: BCU 43-36-199	Job Type: 2 STAGE	ADC Used: YES
Customer Rep: TED RAGSDALE	Cement Supervisor: JESSE SLAUGHTER	Elite #1: WESLEY GOWEN

OptiCem v6.4.10
08-Jul-12 10:16