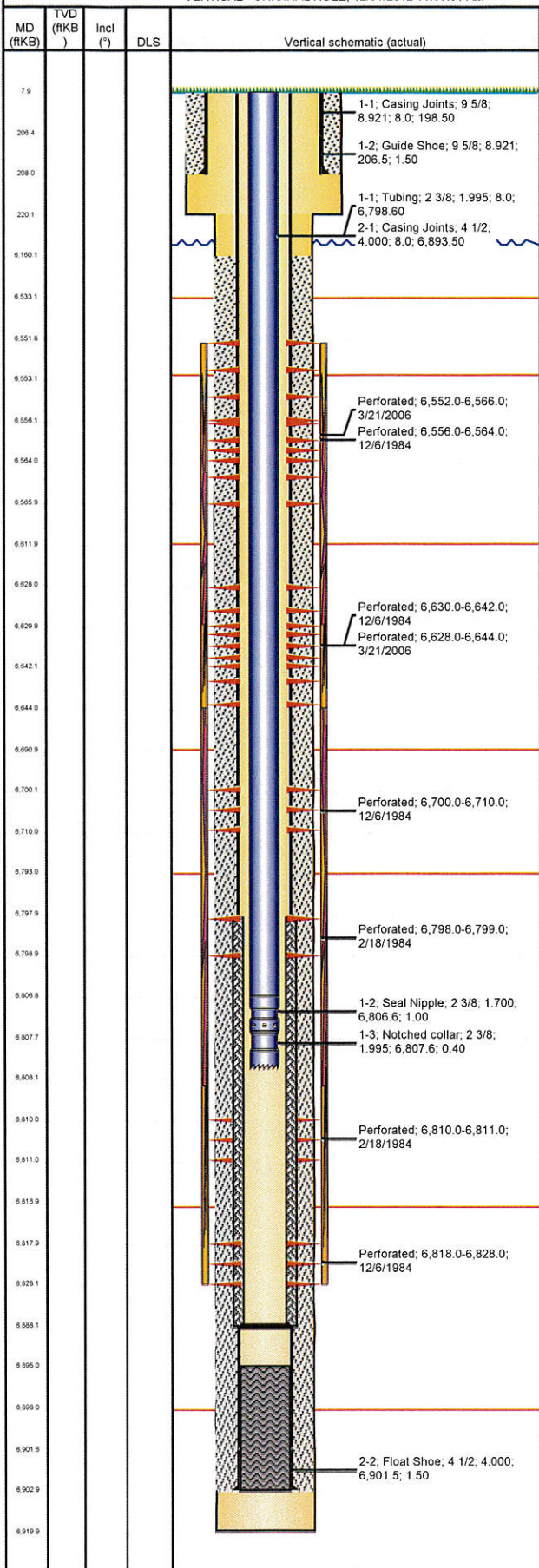


Well Name: CLEMONS 13-15

VERTICAL - ORIGINAL HOLE, 12/31/2012 11:53:31 AM



Logs

Well Header

| | | | |
|--|------------------------------|------------------------|-------------------------|
| API 05-123-11032 | Business Unit WATTENBERG | District 15 | Well Config VERTICAL |
| Original KB Elevation (ft) 4,674.00 | KB - GL / MSL (ftKB) 8.00 | Spud Date 2/25/1983 | P & A Date |

Comment

frac'd into by State 16-914 3/03

Directions To Well

WCR 44 & WCR 55, N .5, E .2 INTO

Congressional Location

| Quarter 1 | Quarter 2 | Quarter 3 | Quarter 4 | Section | Township | Twntshp N... | Range | Rng E/W Dir |
|-----------|-----------|-----------|-----------|---------|----------|--------------|-------|-------------|
| | | | SW | 15 | 4 | N | 64 | W |

Bottom Hole Location

| | | | |
|---------------------------|------------------|-------------------------|------------------|
| North-South Distance (ft) | From N or S Line | East-West Distance (ft) | From E or W Line |
|---------------------------|------------------|-------------------------|------------------|

Plug Back Total Depths

| Date | Depth (ftKB) | Method | Com |
|-----------|--------------|----------------|---------------------|
| 12/6/1984 | 6,895.0 | CASED HOLE LOG | DEPTH LOGGER ON CBL |
| 4/21/2006 | 6,888.0 | TAG | C/O & LAND TBG |

Wellbore Sections

| Section Des | Size (in) | Act Top (ftKB) | Act Btm (ftKB) |
|-------------|-----------|----------------|----------------|
| SURFACE | 12 1/4 | 8.0 | 220.0 |
| PRODUCTION | 7 7/8 | 220.0 | 6,920.0 |

Zone Statuses

| Zone Name | Status Date | Status | Job |
|-----------|-------------|--------|---|
| NIOBRARA | 12/21/1984 | PR | DRILLING/COMPLETION - ORIGINAL, 2/25/1983 00:00 |
| NIOBRARA | 4/25/2006 | PR | RE-FRAC, 3/17/2006 00:00 |
| CODELL | 12/21/1984 | PR | DRILLING/COMPLETION - ORIGINAL, 2/25/1983 00:00 |

Casing Strings

Surface, 208.0ftKB

| Casing Description | Run Date | OD (in) | Wt/Len (lb/ft) | Grade | Top (ftKB) | Set Depth... |
|--------------------|-----------|---------|----------------|-------|------------|--------------|
| Surface | 2/25/1983 | 9 5/8 | 36.00 | ? | 8.0 | 208.0 |

Production, 6,903.0ftKB

| Casing Description | Run Date | OD (in) | Wt/Len (lb/ft) | Grade | Top (ftKB) | Set Depth... |
|--------------------|----------|---------|----------------|-------|------------|--------------|
| Production | 3/8/1983 | 4 1/2 | 11.60 | N-80 | 8.0 | 6,903.0 |

Cement

| Description | Top Depth (ftKB) | Bottom Depth (ftKB) |
|--------------------------|------------------|---------------------|
| SURFACE CASING CEMENT | 8.0 | 208.0 |
| PRODUCTION CASING CEMENT | 6,160.0 | 6,903.0 |
| REMEDIAL CEMENT SQUEEZE | 6,798.0 | 6,888.0 |

Tubing Components

| Item Des | OD (in) | Wt (lb/ft) | Grade | Jts | Len (ft) | Btm (ftKB) | Btm (TVD) (ftKB) |
|----------------|---------|------------|-------|-----|----------|------------|------------------|
| Tubing | 2 3/8 | 4.70 | J-55 | 214 | 6,798.60 | 6,806.6 | |
| Seal Nipple | 2 3/8 | | | 1 | 1.00 | 6,807.6 | |
| Notched collar | 2 3/8 | | | 1 | 0.40 | 6,808.0 | |

Perforation Data

| Zone | Bnch/St g | Entered Shot Total | Top (ftKB) | Btm (ftKB) | Date |
|-------------------------|-----------|--------------------|------------|------------|-----------|
| NIOBRARA, ORIGINAL HOLE | A | 84 | 6,552.00 | 6,566.00 | 3/21/2006 |
| NIOBRARA, ORIGINAL HOLE | A | 2 | 6,556.00 | 6,564.00 | 12/6/1984 |
| NIOBRARA, ORIGINAL HOLE | B | 96 | 6,628.00 | 6,644.00 | 3/21/2006 |
| NIOBRARA, ORIGINAL HOLE | B | 4 | 6,630.00 | 6,642.00 | 12/6/1984 |
| NIOBRARA, ORIGINAL HOLE | C | 2 | 6,700.00 | 6,710.00 | 12/6/1984 |
| | | | 6,798.00 | 6,799.00 | 2/18/1984 |
| | | | 6,810.00 | 6,811.00 | 2/18/1984 |
| CODELL, ORIGINAL HOLE | | 4 | 6,818.00 | 6,828.00 | 12/6/1984 |

Stimulations & Treatments

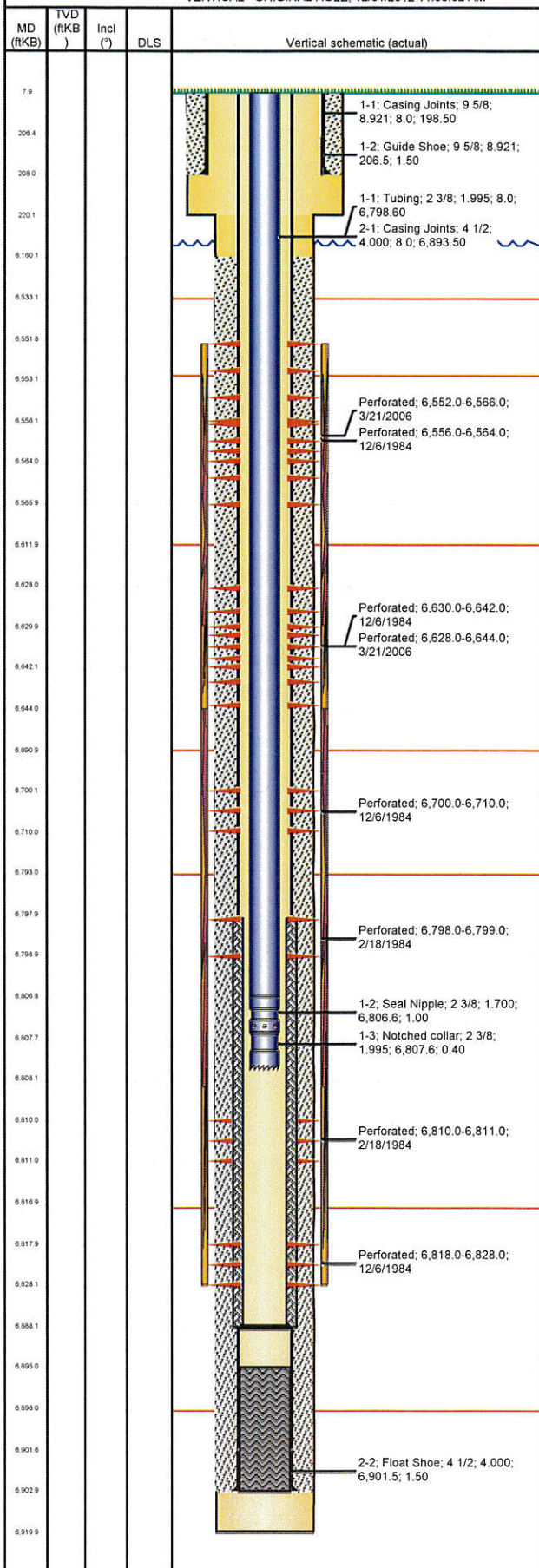
| Date | Zone | Primary Job Type |
|------------------|--------------------------------|--------------------------------|
| 12/19/1984 | NIOBRARA-CODELL, ORIGINAL HOLE | DRILLING/COMPLETION - ORIGINAL |
| Technical Result | Tech Result Details | Tech Result Note |

Comment

C/N FRAC'D LIMITED ENTRY

Well Name: CLEMONS 13-15

VERTICAL - ORIGINAL HOLE, 12/31/2012 11:53:32 AM



Stimulations & Treatments

| | | | |
|------------------|-------------------------|---------------------|------------------|
| Date | Zone | Primary Job Type | |
| 4/6/2006 | NIOBRARA, ORIGINAL HOLE | RE-FRAC | |
| Technical Result | | Tech Result Details | Tech Result Note |
| Comment | | | |
| REFRAC NIOBRARA | | | |
| Other In Hole | | | |
| Run Date | Des | OD (in) | Top (ftKB) |
| | | | |
| Logs | | | |
| Date | Type | Top (ftKB) | Btm (ftKB) |
| 3/6/1983 | COMPENSATED DENSITY | 3,496.0 | 6,914.0 |
| 3/6/1983 | CYBERLOOK | 3,496.0 | 6,914.0 |
| 3/6/1983 | INDUCTION | 207.0 | 6,914.0 |
| 12/6/1984 | CEMENT BOND | 6,600.0 | 6,888.0 |
| 3/20/2006 | CBL/CCL/GR | 5,815.0 | 6,215.0 |
| 3/20/2006 | GAMMA RAY | 5,816.0 | 6,225.0 |
| 3/21/2006 | GAMMA RAY | 5,800.0 | 6,678.0 |
| 3/17/2011 | GYRO | 10.0 | 6,800.0 |