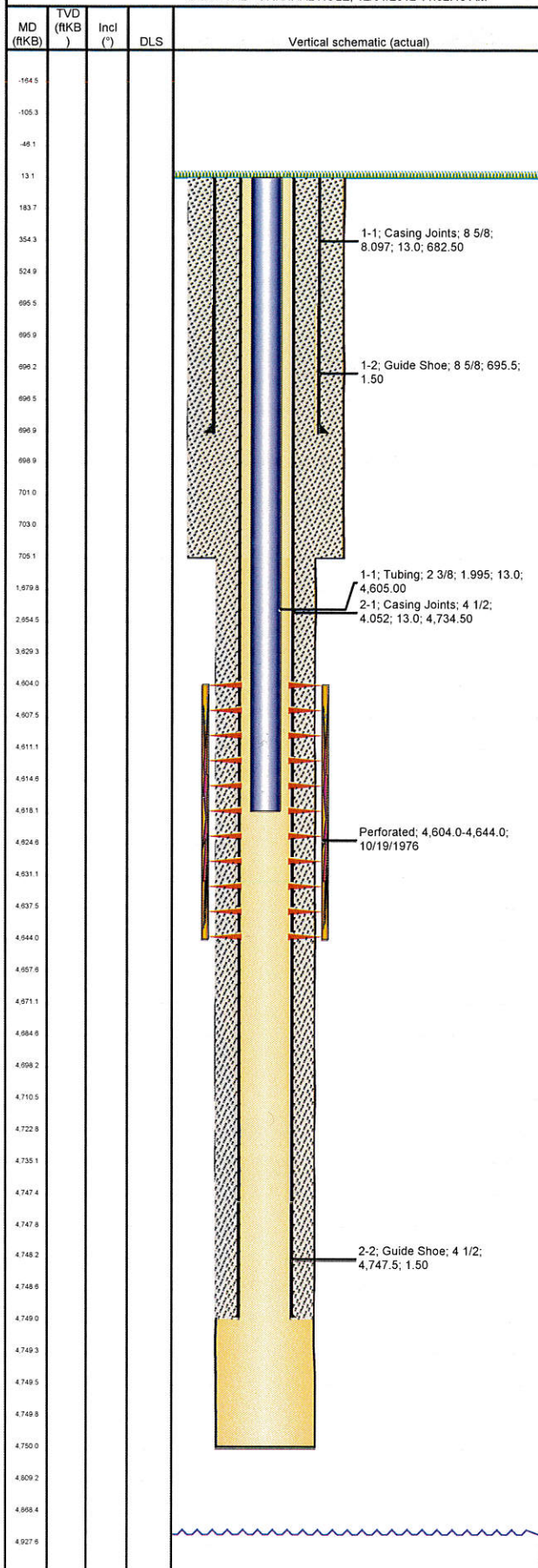




# Wellbore Schematic Input Report

Well Name: SHIVERS 04

VERTICAL - ORIGINAL HOLE, 12/31/2012 11:52:48 AM



## Well Header

API	Business Unit	District	Well Config
05-123-08775	WATTENBERG	15	VERTICAL
Original KB Elevation (ft)	KB - GL / MSL (ftKB)	Spud Date	P & A Date
4,908.00	13.00	10/1/1976	
Comment			
NO CBL RUN TOC IS ESTIMATED. MINIMAL INFO IN WELL FILE ON SPECIFICS TO WORK DONE			
Directions To Well			

## Congressional Location

Quarter 1	Quarter 2	Quarter 3	Quarter 4	Section	Township	Twship N...	Range	Rng E/W Dir
		SW	NE	29	2	N	66	W

## Bottom Hole Location

North-South Distance (ft)	From N or S Line	East-West Distance (ft)	From E or W Line

## Plug Back Total Depths

Date	Depth (ftKB)	Method	Com
	4,698.0		

## Wellbore Sections

Section Des	Size (in)	Act Top (ftKB)	Act Btm (ftKB)
SURFACE	12 1/4	13.0	705.0
PRODUCTION	7 7/8	705.0	4,750.0

## Zone Statuses

Zone Name	Status Date	Status	Job
SUSSEX	10/21/1976	PR	DRILLING/COMPLETION - ORIGINAL, 10/1/1976 00:00
SUSSEX	6/1/1978	PR	RE-FRAC, 4/3/1978 00:00
SUSSEX	6/12/1996	TA	
SUSSEX	9/1/1997	PR	

## Casing Strings

### Surface, 697.0ftKB

Casing Description	Run Date	OD (in)	Wt/Len (l...)	Grade	Top (ftKB)	Set Depth...
Surface	10/3/1976	8 5/8	24.00	?	13.0	697.0

### Production, 4,749.0ftKB

Casing Description	Run Date	OD (in)	Wt/Len (l...)	Grade	Top (ftKB)	Set Depth...
Production	10/12/1976	4 1/2	10.50	K-55	13.0	4,749.0

## Cement

Description	Top Depth (ftKB)	Bottom Depth (ftKB)
SURFACE CASING CEMENT	13.0	697.0
PRODUCTION CASING CEMENT	13.0	4,749.0

## Tubing Components

Item Des	OD (in)	Wt (lb/ft)	Grade	Jts	Len (ft)	Btm (ftKB)	Btm (TVD) (ftKB)
Tubing	2 3/8	4.70	?	143	4,605.00	4,618.0	

## Perforation Data

Zone	Bnch/St g	Entered Shot Total	Top (ftKB)	Btm (ftKB)	Date
SUSSEX, ORIGINAL HOLE		40	4,604.00	4,644.00	10/19/1976

## Stimulations & Treatments

Date	Zone	Primary Job Type
10/2/1976	SUSSEX, ORIGINAL HOLE	DRILLING/COMPLETION - ORIGINAL
Technical Result		
Tech Result Details		
Tech Result Note		

Comment  
NO FRAC DETAILS PULLED FROM COMLETION REPORT

Date	Zone	Primary Job Type
4/5/1978	SUSSEX, ORIGINAL HOLE	RE-FRAC
Technical Result		
Tech Result Details		
Tech Result Note		

Comment  
MINIMAL INFO. NO MENTION OF HOW MUCH WATER & ACID USED.

## Other In Hole

Run Date	Des	OD (in)	Top (ftKB)	Btm (ftKB)

## Logs

Date	Type	Top (ftKB)	Btm (ftKB)
10/11/1976	COMPENSATED DENSITY	3,900.0	4,730.0
10/11/1976	INDUCTION	697.0	4,736.0
10/18/1976	RADIOACTIVITY LOG	4,400.0	4,698.0