



Lat40°, Inc. 1635 Foxtrail Drive, Suite 325 Loveland, CO 970-776-3321

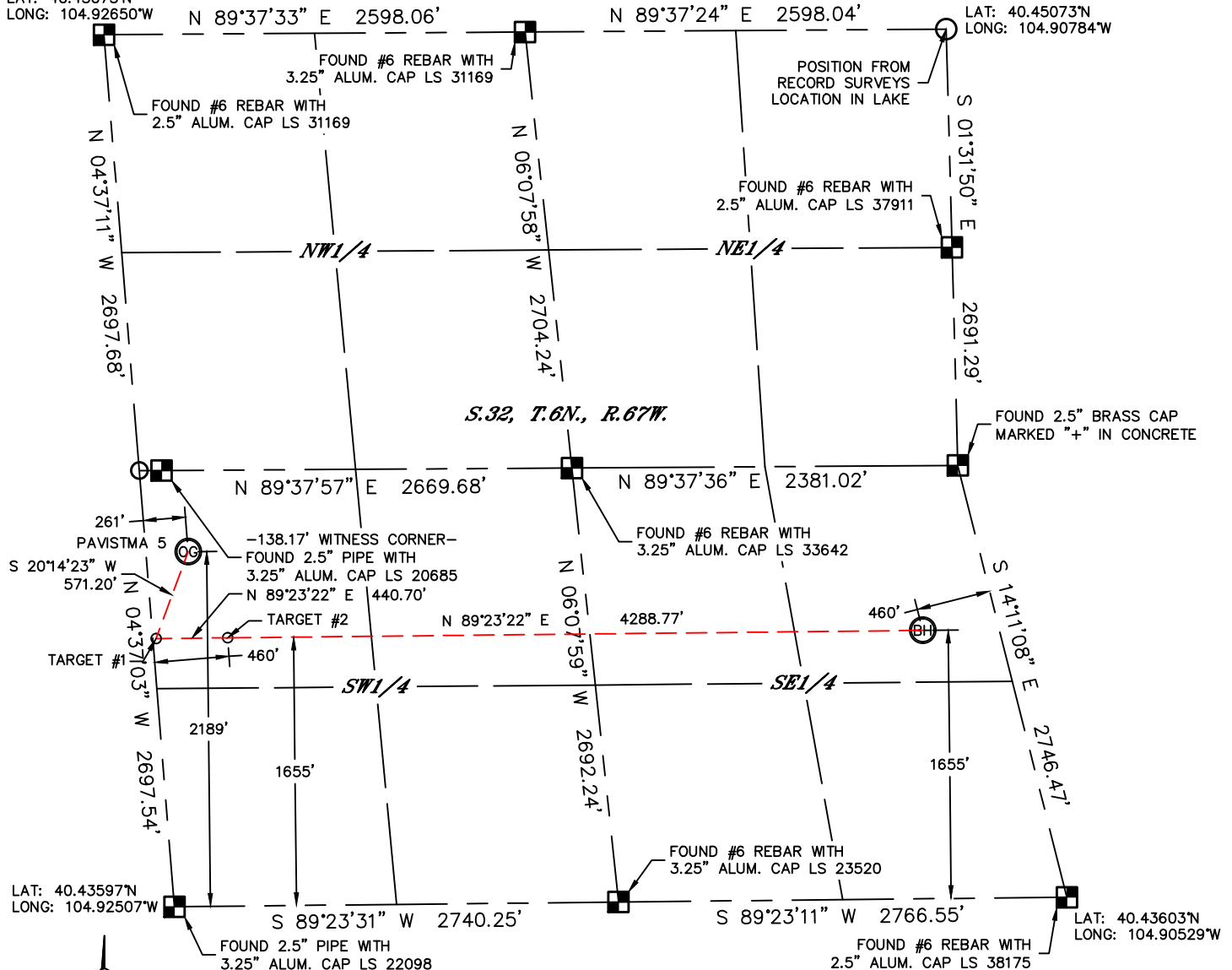
# WELL LOCATION CERTIFICATE

SECTION: 32  
TOWNSHIP: 6N  
RANGE: 67W

THIS MAP DOES NOT REPRESENT A BOUNDARY SURVEY

LAT: 40.45073°N  
LONG: 104.92650°W

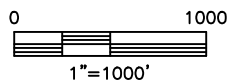
LAT: 40.45073°N  
LONG: 104.90784°W



In accordance with a request from Michael Cuba with TEKTON ENERGY, LLC

Lat40°, Inc. has determined the surface location of the PAVISTMA 5 #1-5-32-090-4-NH to be 2189' from the SOUTH line and 261' from the WEST line and the bottom hole to be 1655' from the SOUTH line and 460' from the EAST line as measured at right angles from the section lines of Section 32, Township 6 North, Range 67 West of the Sixth Principal Meridian, County of Weld, State of Colorado.

I hereby state that this Well Location Certificate was prepared by me, or under my direct supervision, that the fieldwork was completed on 11/14/2012, for and on behalf of TEKTON ENERGY, LLC That this is not a Land Survey Plat or an Improvement Survey Plat, and that it is not to be relied upon for establishment of fence, building, or other future improvement lines.



## NOTE:

- 1) Bearings shown are Grid Bearings of the Colorado State Plane Coordinate System, North Zone, North American Datum 1983/2007. The lineal dimensions as contained herein are based upon the "U.S. Survey Foot."
- 2) Ground elevations are based on an observed GPS elevation (NAVD 1988 DATUM).
- 3) IMPROVEMENTS: See LOCATION DRAWING for all visible improvements within 400' of disturbed area.
- 4) SURFACE USE: EX. WELL PAD / CROPLAND
- 5) INSTRUMENT OPERATOR: BRIAN ROTTINGHAUS

## NOTE

According to Colorado law, you must commence any legal action based upon any defect in this W.L.C. within three years after you discover such defect. In no event, may any action based upon any defect in this survey be commenced more than ten years after the date of the certificate shown hereon. (13-80-105 C.R.S.)

## LEGEND

- = ALIQUOT MONUMENT AS DESCRIBED
- = CALCULATED POSITION

## SURFACE LOCATION

LAT: 40.44197°N  
LONG: 104.92471°W  
PDOP: 1.8  
ELEV: 4953'  
1/4, 1/4: NW1/4SW1/4  
NEAREST PROPERTY LINE: 261' W

## TARGET #1

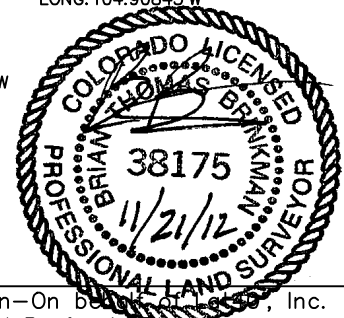
LAT: 40.44051°N  
LONG: 104.92544°W

## TARGET #2

LAT: 40.44051°N  
LONG: 104.92385°W

## BOTTOM HOLE

LAT: 40.44056°N  
LONG: 104.90845°W



Brian T. Brinkman—On behalf of Lat40°, Inc.  
Colorado Licensed Professional  
Land Surveyor No. 38175

DATE: 11/20/2012  
PROJECT#: 2011316