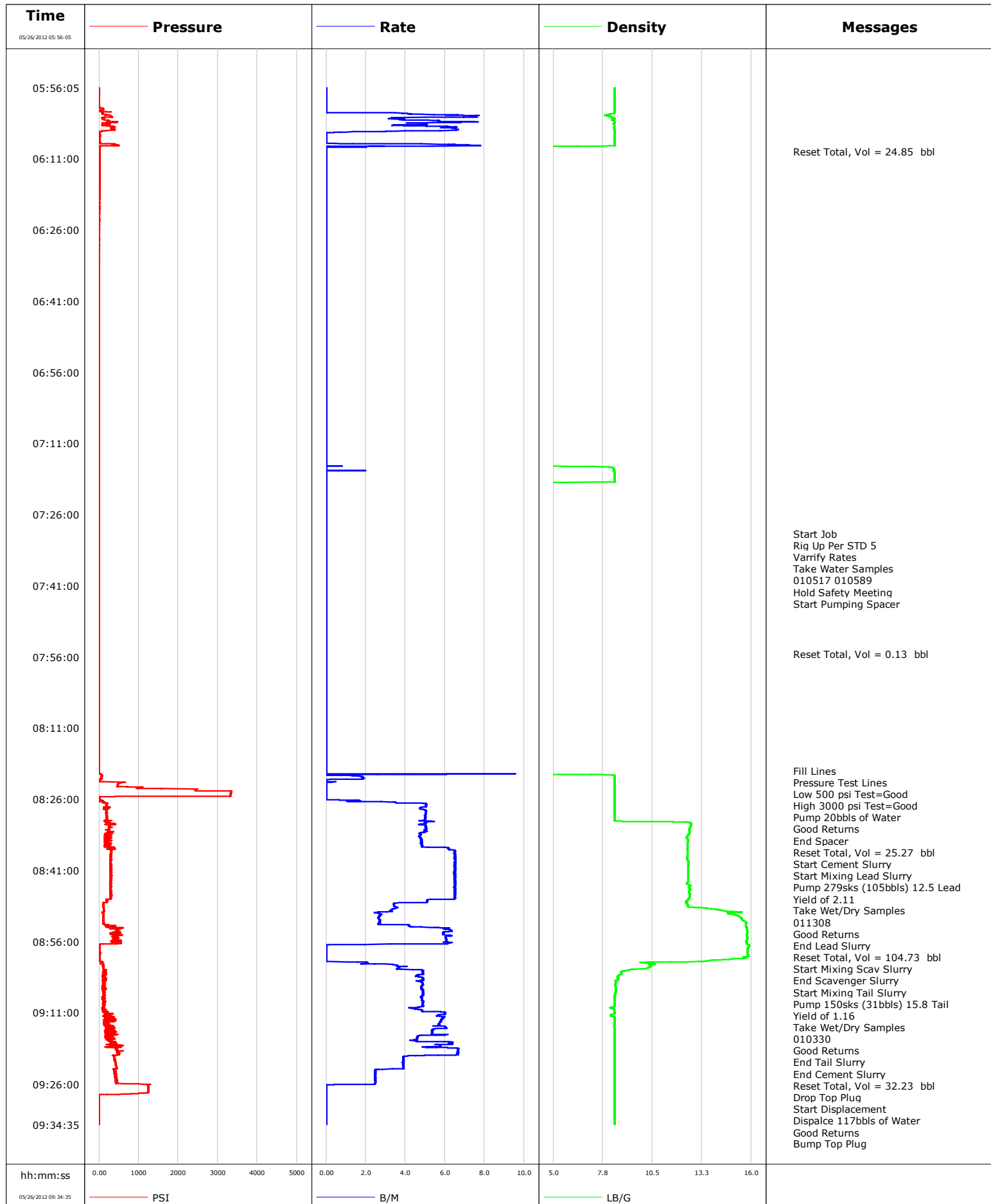
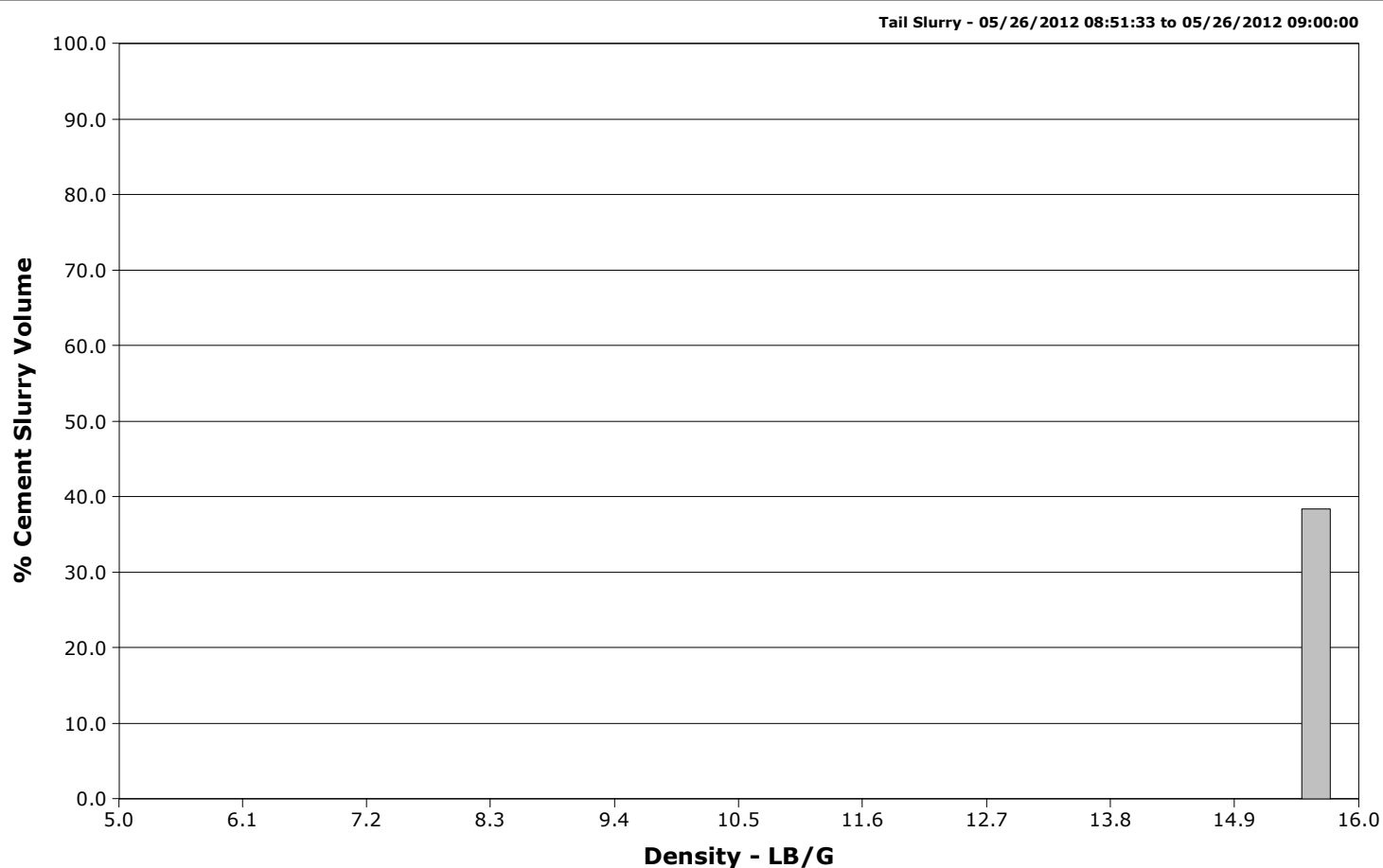
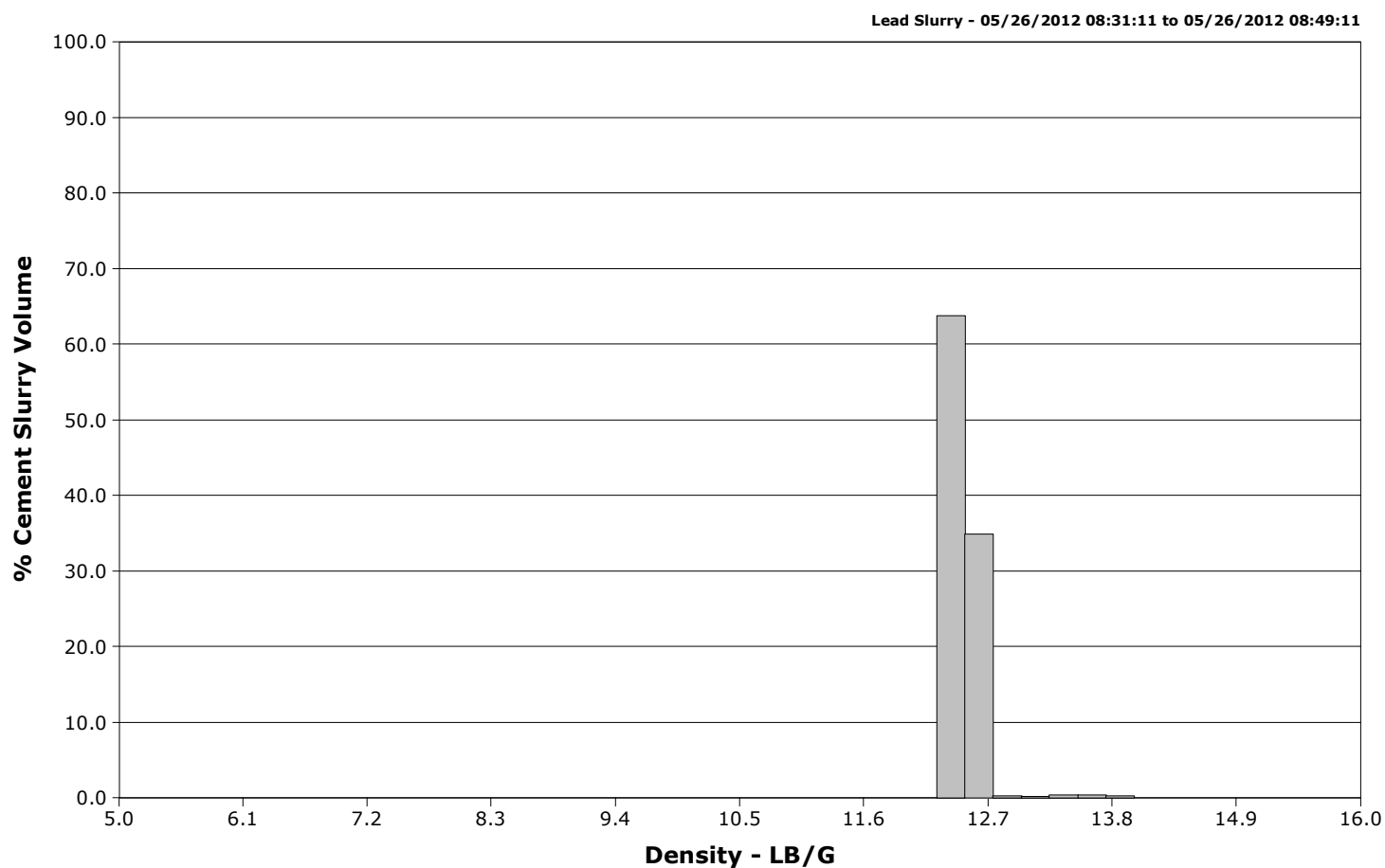


Well	MCU 22-11A	Client	ENCANA
Field	MAMM CREEK	SIR No.	777473
Engineer	Dant Ryan	Job Type	9 5/8 SURFACE
Country	United States	Job Date	05-26-2012



Well MCU 22-11A
Field MAMM CREEK
Engineer Dant Ryan
Country United States

Client ENCANA
SIR No. 777473
Job Type 9 5/8 SURFACE
Job Date 05-26-2012



				Customer ENCANA				Job Number 777473										
Well MCU 22-11A 22-11A				Location (legal) N22W				Schlumberger Location Grand Junction				Job Start May/26/2012						
Field MAMM CREEK			Formation Name/Type Shale			Deviation deg		Bit Size 12.3 in		Well MD 1567.0 ft		Well TVD 1567.0 ft						
County GARFIELD			State/Province COLORADO			BHP psi		BHST 93 degF		BHCT 82 degF		Pore Press. Gradient lb/gal						
Well Master 0631370432			API/UWI															
Rig Name NABORS M-15		Drilled For Gas		Service Via Land		Casing/Liner												
						Depth, ft		Size, in		Weight, lb/ft		Grade		Thread				
Offshore Zone		Well Class New		Well Type Development		60.0		16.0		65.0		N/A		N/A				
						1567.0		9.6		36.0		K55		8RD				
Drilling Fluid Type Bentonite			Max. Density 10.00 lb/gal		Plastic Viscosity 15.000 cP		Tubing/Drill Pipe											
							T/D		Depth, ft		Size, in		Weight, lb/ft		Grade		Thread	
Service Line Cementing		Job Type 9 5/8 SURFACE																
Max. Allowed Tub. Press psi		Max. Allowed Ann. Press psi			WH Connection Single Cement head			Perforations/Open Hole										
								Top, ft		Bottom, ft		shot/ft		No. of Shots		Total Interval ft		
Service Instructions Cement 9 5/8 Surface casing Pump 20bbbs of Water Pump 279sks (105bbbs) of 12.5 Lead Yield of 2.11 Pump 150sks (31bbbs) of 15.8 Tail Yield of 1.16 Displace 118bbbs of Water								ft		ft								
								ft		ft						Diameter in		
								ft		ft								
		Treat Down Casing				Displacement 118.0 bbl				Packer Type				Packer Depth ft				
Tubing Vol. bbl				Casing Vol. 121.0 bbl				Annular Vol. 92.0 bbl				Openhole Vol. 218.0 bbl						
Casing/Tubing Secured <input checked="" type="checkbox"/>			1 Hole Vol. Circulated prior to Cement <input checked="" type="checkbox"/>			Casing Tools				Squeeze Job								
Lift Pressure 775 psi						Shoe Type Float				Squeeze Type								
Pipe Rotated <input type="checkbox"/>			Pipe Reciprocated <input type="checkbox"/>			Shoe Depth 1567.0 ft				Tool Type								
No. Centralizers			Top Plugs 1		Bottom Plugs		Stage Tool Type				Tool Depth ft							
Cement Head Type Single						Stage Tool Depth ft				Tail Pipe Size in								
Job Scheduled For May/26/2012 00:00			Arrived on Location May/26/2012 00:00			Leave Location May/26/2012 11:00			Collar Type Float				Tail Pipe Depth ft					
									Collar Depth 1525.0 ft				Sqz. Total Vol. bbl					
Date	Time 24-hr clock	Treating Pressure PSI	Flow Rate B/M	Density LB/G	Volume BBL	Message												
05/26/2012	05:56:05	-0	0.0	8.42	0.0	Started Acquisition												
05/26/2012	05:57:45	-0	0.0	8.41	0.0													
05/26/2012	05:59:25	-1	0.0	8.41	0.0													
05/26/2012	06:01:05	36	0.0	8.41	0.0													
05/26/2012	06:02:45	105	3.9	8.26	0.0													
05/26/2012	06:04:25	398	6.6	8.38	0.0													
05/26/2012	06:06:05	26	0.0	8.41	0.0													
05/26/2012	06:07:45	18	0.0	8.41	0.0													
05/26/2012	06:09:25	1	0.0	-0.00	0.0	Reset Total, Vol = 24.85 bbl												
05/26/2012	06:11:05	1	0.0	-0.00	0.0													
05/26/2012	06:12:45	1	0.0	-0.00	0.0													
05/26/2012	06:14:25	0	0.0	-0.00	0.0													
05/26/2012	06:16:05	0	0.0	-0.00	0.0													
05/26/2012	06:17:45	1	0.0	-0.00	0.0													
05/26/2012	06:19:25	-0	0.0	-0.00	0.0													
05/26/2012	06:21:05	1	0.0	-0.00	0.0													
05/26/2012	06:22:45	0	0.0	-0.00	0.0													
05/26/2012	06:24:25	-0	0.0	-0.00	0.0													
05/26/2012	06:26:05	-0	0.0	-0.00	0.0													
05/26/2012	06:27:45	0	0.0	-0.00	0.0													
05/26/2012	06:29:25	-1	0.0	-0.00	0.0													

Well			Field		Job Start	Customer	Job Number
MCU 22-11A 22-11A			MAMM CREEK		May/26/2012	ENCANA	777473
Date	Time 24-hr clock	Treating Pressure PSI	Flow Rate B/M	Density LB/G	Volume BBL	Message	
05/26/2012	06:32:45	-1	0.0	-0.00	0.0		
05/26/2012	06:34:25	-0	0.0	-0.00	0.0		
05/26/2012	06:36:05	-0	0.0	-0.00	0.0		
05/26/2012	06:37:45	-0	0.0	-0.00	0.0		
05/26/2012	06:39:25	-1	0.0	-0.00	0.0		
05/26/2012	06:41:05	-1	0.0	-0.00	0.0		
05/26/2012	06:42:45	-1	0.0	-0.00	0.0		
05/26/2012	06:44:25	-0	0.0	-0.00	0.0		
05/26/2012	06:46:05	-0	0.0	-0.00	0.0		
05/26/2012	06:47:45	-1	0.0	-0.00	0.0		
05/26/2012	06:49:25	-1	0.0	-0.00	0.0		
05/26/2012	06:51:05	-1	0.0	-0.00	0.0		
05/26/2012	06:52:45	-1	0.0	-0.00	0.0		
05/26/2012	06:54:25	-1	0.0	-0.00	0.0		
05/26/2012	06:56:05	-1	0.0	-0.00	0.0		
05/26/2012	06:57:45	-1	0.0	-0.00	0.0		
05/26/2012	06:59:25	-1	0.0	-0.00	0.0		
05/26/2012	07:01:05	-1	0.0	-0.00	0.0		
05/26/2012	07:02:45	-1	0.0	-0.00	0.0		
05/26/2012	07:04:25	-1	0.0	-0.00	0.0		
05/26/2012	07:06:05	-1	0.0	-0.00	0.0		
05/26/2012	07:07:45	-1	0.0	-0.00	0.0		
05/26/2012	07:09:25	-1	0.0	-0.00	0.0		
05/26/2012	07:11:05	-1	0.0	-0.00	0.0		
05/26/2012	07:12:45	-1	0.0	-0.00	0.0		
05/26/2012	07:14:25	-1	0.0	-0.00	0.0		
05/26/2012	07:16:05	-5	0.0	8.20	0.0		
05/26/2012	07:17:45	-5	0.0	8.41	0.0		
05/26/2012	07:19:25	-5	0.0	0.22	0.0		
05/26/2012	07:21:05	-5	0.0	-0.00	0.0		
05/26/2012	07:22:45	-5	0.0	-0.00	0.0		
05/26/2012	07:24:25	-5	0.0	-0.00	0.0		
05/26/2012	07:26:05	-5	0.0	-0.00	0.0		
05/26/2012	07:27:45	-5	0.0	-0.00	0.0		
05/26/2012	07:29:25	-4	0.0	-0.00	0.0		
05/26/2012	07:30:00	-5	0.0	-0.00	0.0	Start Job	
05/26/2012	07:31:05	-5	0.0	-0.00	0.0		
05/26/2012	07:32:45	-5	0.0	-0.00	0.0		
05/26/2012	07:34:25	-5	0.0	-0.00	0.0		
05/26/2012	07:36:05	-5	0.0	-0.00	0.0		
05/26/2012	07:37:45	-5	0.0	-0.00	0.0		
05/26/2012	07:39:25	-5	0.0	-0.00	0.0		
05/26/2012	07:41:05	-3	0.0	-0.00	0.0		
05/26/2012	07:42:45	-3	0.0	-0.00	0.0		
05/26/2012	07:44:25	-3	0.0	-0.00	0.0		
05/26/2012	07:46:05	-4	0.0	-0.00	0.0		
05/26/2012	07:47:45	-4	0.0	-0.00	0.0		
05/26/2012	07:49:25	-4	0.0	-0.00	0.0		
05/26/2012	07:51:05	-3	0.0	-0.00	0.0		
05/26/2012	07:52:45	-4	0.0	-0.00	0.0		
05/26/2012	07:54:25	-3	0.0	-0.00	0.0		
05/26/2012	07:55:19	-4	0.0	-0.00	0.0	Reset Total, Vol = 0.13 bbl	
05/26/2012	07:56:05	-4	0.0	0.19	0.0		
05/26/2012	07:57:45	-4	0.0	0.01	0.0		

Well			Field		Job Start		Customer		Job Number	
MCU 22-11A 22-11A			MAMM CREEK		May/26/2012		ENCANA		777473	
Date	Time 24-hr clock	Treating Pressure PSI		Flow Rate B/M	Density LB/G		Volume BBL		Message	
05/26/2012	08:01:05	-4		0.0	0.01		0.0			
05/26/2012	08:02:45	-4		0.0	0.01		0.0			
05/26/2012	08:04:25	-4		0.0	0.03		0.0			
05/26/2012	08:06:05	-4		0.0	0.03		0.0			
05/26/2012	08:07:45	-4		0.0	0.04		0.0			
05/26/2012	08:09:25	-4		0.0	0.04		0.0			
05/26/2012	08:11:05	-4		0.0	0.06		0.0			
05/26/2012	08:12:45	-4		0.0	0.06		0.0			
05/26/2012	08:14:25	-4		0.0	0.07		0.0			
05/26/2012	08:16:05	-4		0.0	0.08		0.0			
05/26/2012	08:17:45	-4		0.0	0.10		0.0			
05/26/2012	08:19:25	-4		0.0	0.10		0.0			
05/26/2012	08:20:00	-4		0.0	0.10		0.0		Fill Lines	
05/26/2012	08:21:00	75		0.0	8.36		0.0		Pressure Test Lines	
05/26/2012	08:21:05	82		1.4	8.40		0.0			
05/26/2012	08:22:45	485		0.0	8.41		0.0			
05/26/2012	08:24:00	2442		0.0	8.41		0.0		High 3000 psi Test=Good	
05/26/2012	08:24:25	3331		0.0	8.41		0.0			
05/26/2012	08:26:00	15		0.0	8.41		0.0		Pump 20bbls of Water	
05/26/2012	08:26:05	15		0.0	8.41		0.0			
05/26/2012	08:27:45	257		4.8	8.41		0.0			
05/26/2012	08:28:00	203		4.7	8.41		0.0		Good Returns	
05/26/2012	08:29:25	185		5.0	8.41		0.0			
05/26/2012	08:31:05	262		5.0	12.64		0.0			
05/26/2012	08:31:10	251		4.9	12.65		0.0		End Spacer	
05/26/2012	08:31:11	259		4.9	12.65		0.0		Reset Total, Vol = 25.27 bbl	
05/26/2012	08:32:11	250		5.1	12.57		0.0		Pump 279sks (105bbls) 12.5 Lead	
05/26/2012	08:32:45	252		5.1	12.56		0.0			
05/26/2012	08:33:11	338		4.7	12.55		0.0		011308	
05/26/2012	08:34:25	136		4.8	12.45		0.0			
05/26/2012	08:36:05	143		4.8	12.44		0.0			
05/26/2012	08:37:45	317		6.5	12.45		0.0			
05/26/2012	08:39:25	287		6.5	12.52		0.0			
05/26/2012	08:41:05	291		6.5	12.49		0.0			
05/26/2012	08:42:45	311		6.5	12.48		0.0			
05/26/2012	08:44:25	292		6.5	12.59		0.0			
05/26/2012	08:46:05	287		6.5	12.59		0.0			
05/26/2012	08:47:45	203		5.1	12.41		0.0			
05/26/2012	08:49:11	115		3.4	13.89		0.0		End Lead Slurry	
05/26/2012	08:49:25	117		3.3	14.33		0.0			
05/26/2012	08:49:33	120		3.2	14.48		0.0		Reset Total, Vol = 104.73 bbl	
05/26/2012	08:51:05	104		2.6	15.45		0.0			
05/26/2012	08:51:33	106		2.7	15.51		0.0		End Scavenger Slurry	
05/26/2012	08:52:45	413		4.2	15.69		0.0			
05/26/2012	08:53:33	485		6.3	15.75		0.0		Good Returns	
05/26/2012	08:54:25	334		5.9	15.75		0.0			
05/26/2012	08:56:05	508		6.1	15.73		0.0			
05/26/2012	08:57:45	5		0.0	15.80		0.0			
05/26/2012	08:59:25	11		0.0	15.66		0.0			
05/26/2012	09:00:00	17		0.0	13.77		0.0		End Tail Slurry	
05/26/2012	09:00:23	68		2.0	10.28		0.0		Reset Total, Vol = 32.23 bbl	
05/26/2012	09:00:24	91		2.1	9.97		0.0		Drop Top Plug	
05/26/2012	09:01:00	97		3.5	10.38		0.0		Start Displacement	
05/26/2012	09:01:01	100		3.5	10.42		0.0		Dispalce 117bbls of Water	

Well			Field		Job Start	Customer		Job Number
MCU 22-11A 22-11A			MAMM CREEK		May/26/2012	ENCANA		777473
Date	Time 24-hr clock	Treating Pressure PSI	Flow Rate B/M	Density LB/G	Volume BBL	Message		
05/26/2012	09:02:45	100	4.9	8.78	0.0			
05/26/2012	09:04:25	121	4.8	8.50	0.0			
05/26/2012	09:05:00	112	4.9	8.44	0.0	Good Returns		
05/26/2012	09:06:05	102	4.8	8.46	0.0			
05/26/2012	09:07:45	84	4.8	8.39	0.0			
05/26/2012	09:09:25	99	4.8	8.42	0.0			
05/26/2012	09:11:05	174	6.0	8.40	0.0			
05/26/2012	09:12:45	407	5.8	8.41	0.0			
05/26/2012	09:14:25	314	5.5	8.41	0.0			
05/26/2012	09:16:05	176	4.6	8.41	0.0			
05/26/2012	09:17:45	194	5.6	8.41	0.0			
05/26/2012	09:19:25	480	6.7	8.41	0.0			
05/26/2012	09:21:05	393	3.9	8.41	0.0			
05/26/2012	09:22:45	439	3.9	8.41	0.0			
05/26/2012	09:24:25	405	2.5	8.41	0.0			
05/26/2012	09:26:05	981	2.5	8.41	0.0			
05/26/2012	09:27:45	1234	0.0	8.41	0.0			
05/26/2012	09:29:25	-6	0.0	8.41	0.0			
05/26/2012	09:31:05	-6	0.0	8.41	0.0			
05/26/2012	09:32:45	-6	0.0	8.41	0.0			
05/26/2012	09:33:00	-6	0.0	8.41	0.0	Bump Top Plug		
05/26/2012	09:34:00	-6	0.0	8.41	0.0	1/2bbl Back		

Post Job Summary

Average Pump Rates, bbl/min					Volume of Fluid Injected, bbl			
Slurry 4.7	N2	Mud	Maximum Rate 6.5	Total Slurry 140.0	Mud 0.0	Spacer 21.9	N2 0	
Treating Pressure Summary, psi					Breakdown Fluid			
Maximum 3410	Final 7	Average 359	Bump Plug to 1200	Breakdown 0	Type	Volume bbl	Density lb/gal	
Avg. N2 Percent %		Designed Slurry Volume 136.0 bbl		Displacement 117.0 bbl	Mix Water Temp 60 degF	Cement Circulated to Surface? <input checked="" type="checkbox"/>	Volume 45.0 bbl	
						Washed Thru Perfs <input type="checkbox"/>	To ft	
Customer or Authorized Representative TERRY DUNN			Schlumberger Supervisor Dant Ryan			Circulation Lost <input type="checkbox"/>	Job Completed <input checked="" type="checkbox"/>	
						-	-	