

The Road to Excellence Starts with Safety

Sold To #: 300721	Ship To #: 9000033	Quote #:	Sales Order #: 9000033
Customer: WILLIAMS PRODUCTION RMT INC - EBUS	Customer Rep: Hudson, Matt		
Well Name: RWF	Well #: 321-32	API/UWI #: 05-045-21061	
Field: Rulison	City (SAP):	County/Parish: Garfield	State: Colorado
Lat: N 39.486 deg. OR N 39 deg. 29 min. 8.711 secs.	Long: W 107.916 deg. OR W -108 deg. 5 min. 3.48 secs.		
Contractor: CYCLONE 17	Rig/Platform Name/Num: CYCLONE 17		
Job Purpose: Cement Surface Casing			
Well Type: Development Well	Job Type: Cement Surface Casing		
Sales Person: KOHL, KYLE	Srv Supervisor: SLAUGHTER, JESSE	MBU ID Emp #: 454315	

Job Personnel

HES Emp Name	Exp Hrs	Emp #	HES Emp Name	Exp Hrs	Emp #	HES Emp Name	Exp Hrs	Emp #
DOUT, JACOB J	6.5	430298	REEVES, BRANDON W	6.5	287883	SLAUGHTER, JESSE Dean	6.5	454315
WOLFE, JON P	6.5	485217						

Equipment

HES Unit #	Distance-1 way	HES Unit #	Distance-1 way	HES Unit #	Distance-1 way	HES Unit #	Distance-1 way
11021972	60 mile	11027039	60 mile	11560046	60 mile	11562538	60 mile
11583931	60 mile						

Job Hours

Date	On Location Hours	Operating Hours	Date	On Location Hours	Operating Hours	Date	On Location Hours	Operating Hours
11-18-2011	5	2	11-19-2011	1				

TOTAL Total is the sum of each column separately

Job

Job Times

Formation Name							Date	Time	Time Zone
Formation Depth (MD)	Top			Bottom		Called Out	18 - Nov - 2011	15:30	MST
Form Type			BHST			On Location	18 - Nov - 2011	19:00	MST
Job depth MD	1150. ft		Job Depth TVD	1150. ft		Job Started	18 - Nov - 2011	23:18	MST
Water Depth			Wk Ht Above Floor	6. ft		Job Completed	19 - Nov - 2011	00:17	MST
Perforation Depth (MD)	From			To		Departed Loc	19 - Nov - 2011	01:30	MST

Well Data

Description	New / Used	Max pressure psig	Size in	ID in	Weight lbm/ft	Thread	Grade	Top MD ft	Bottom MD ft	Top TVD ft	Bottom TVD ft
OPEN HOLE				13.5				.	1165.		
SURFACE CASING	Unknown		9.625	9.001	32.3			.	1150.		

Sales/Rental/3rd Party (HES)

Description	Qty	Qty uom	Depth	Supplier
PLUG,CMTG,TOP,9 5/8,HWE,8.16 MIN/9.06 MA	1	EA		

Tools and Accessories

Type	Size	Qty	Make	Depth	Type	Size	Qty	Make	Depth	Type	Size	Qty	Make
Guide Shoe					Packer					Top Plug	9.625	1	HES
Float Shoe					Bridge Plug					Bottom Plug			
Float Collar					Retainer					SSR plug set			
Insert Float										Plug Container	9.625	1	HES
Stage Tool										Centralizers			

Miscellaneous Materials

Gelling Agt	Conc	Surfactant	Conc	Acid Type	Qty	Conc	%
Treatment Fld	Conc	Inhibitor	Conc	Sand Type	Size	Qty	

Fluid Data

Stage/Plug #: 1

Fluid #	Stage Type	Fluid Name	Qty	Qty uom	Mixing Density lbm/gal	Yield ft ³ /sk	Mix Fluid Gal/sk	Rate bbl/min	Total Mix Fluid Gal/sk
1	Water Spacer	FRESH WATER	20.00	bbl	8.33	.0	.0	4	
2	Lead Cement	VERSACEM (TM) SYSTEM (452010)	160.0	sacks	12.3	2.38	13.75	8	13.75
	13.75 Gal	FRESH WATER							
3	Tail Cement	VERSACEM (TM) SYSTEM (452010)	160.0	sacks	12.8	2.11	11.75	8	11.75
	11.75 Gal	FRESH WATER							
4	Displacement Fluid	FRESH WATER	87.00	bbl	8.33	.0	.0	10	
Calculated Values		Pressures		Volumes					
Displacement	87	Shut In: Instant		Lost Returns	NO	Cement Slurry	127.9	Pad	
Top Of Cement	SURFACE	5 Min		Cement Returns	36	Actual Displacement	87	Treatment	
Frac Gradient		15 Min		Spacers	20	Load and Breakdown		Total Job	235
Rates									
Circulating		Mixing	8	Displacement	10	Avg. Job	9		
Cement Left In Pipe	Amount	43.4 ft	Reason	Shoe Joint					
Frac Ring # 1 @	ID	Frac ring # 2 @	ID	Frac Ring # 3 @	ID	Frac Ring # 4 @	ID		
The Information Stated Herein Is Correct				Customer Representative Signature					

The Road to Excellence Starts with Safety

Sold To #: 300721	Ship To #: 9000033	Quote #:	Sales Order #: 9000033
Customer: WILLIAMS PRODUCTION RMT INC - EBUS	Customer Rep: Hudson, Matt		
Well Name: RWF	Well #: 321-32	API/UWI #: 05-045-21061	
Field: Rulison	City (SAP):	County/Parish: Garfield	State: Colorado
Legal Description:			
Lat: N 39.486 deg. OR N 39 deg. 29 min. 8.711 secs.		Long: W 107.916 deg. OR W -108 deg. 5 min. 3.48 secs.	
Contractor: CYCLONE 17	Rig/Platform Name/Num: CYCLONE 17		
Job Purpose: Cement Surface Casing	Ticket Amount:		
Well Type: Development Well	Job Type: Cement Surface Casing		
Sales Person: KOHL, KYLE	Srv Supervisor: SLAUGHTER, JESSE	MBU ID Emp #: 454315	

Activity Description	Date/Time	Cht #	Rate bbl/min	Volume bbl		Pressure psig		Comments
				Stage	Total	Tubing	Casing	
Call Out	11/18/2011 15:30							TD 1165 FT, TP 1150 FT, SHOE 43.49 FT, CSG 9 5/8 IN 32.2 LB/FT, HOLE 13 1/2 IN, MUD WT 10.3 PPG
Pre-Convoy Safety Meeting	11/18/2011 16:50							WITH ALL HES PERSONNEL
Crew Leave Yard	11/18/2011 17:00							
Arrive At Loc	11/18/2011 19:00							RIG WAS RUNNING CASING UPON HES ARRIVAL
Assessment Of Location Safety Meeting	11/18/2011 21:30							WITH ALL HES PERSONNEL
Other	11/18/2011 21:40							SPOT EQUIPMENT
Pre-Rig Up Safety Meeting	11/18/2011 21:50							WITH ALL HES PERSONNEL
Rig-Up Equipment	11/18/2011 22:00							
Pre-Job Safety Meeting	11/18/2011 23:00							WITH ALL PERSONNEL ON LOCATION
Start Job	11/18/2011 23:18							
Other	11/18/2011 23:18		2	2			37.0	FILL LINES WITH FRESH WATER
Test Lines	11/18/2011 23:20							TESTED LINES TO 3550 PSI PRESSURE HOLDING
Pump Spacer 1	11/18/2011 23:29		4	20			120.0	FRESH WATER
Pump Lead Cement	11/18/2011 23:37		8	67.8			348.0	160 SKS AT 12.3 PPG, 2.38 FT3/SK, 13.75 GAL/SK
Activity Description	Date/Time	Cht	Rate bbl/min	Volume bbl		Pressure psig		Comments

Sold To #: 300721

Ship To #: 9000033

Quote #:

Sales Order #:

9000033

SUMMIT Version: 7.2.27

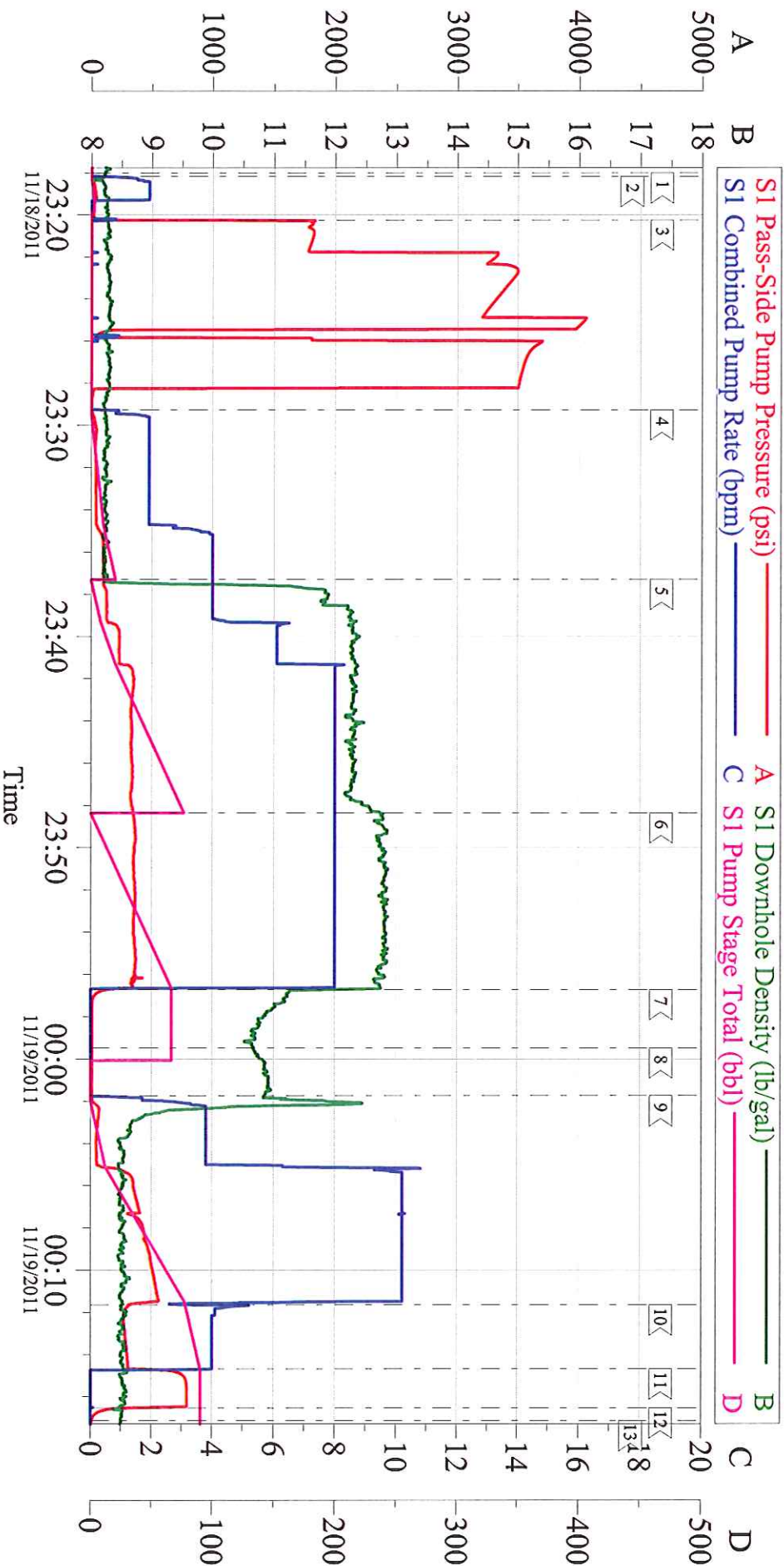
Tuesday, November 22, 2011 04:43:00

Cementing Job Log

		#		Stage	Total	Tubing	Casing	
Pump Tail Cement	11/18/2011 23:48		8	60.1			390.0	160 SKS AT 12.8 PPG, 2.11 FT3/SK, 11.75 GAL/SK
Shutdown	11/18/2011 23:56							
Drop Top Plug	11/18/2011 23:59							PLUG LAUNCHED
Pump Displacement	11/19/2011 00:01		10	77			580.0	FRESH WATER
Slow Rate	11/19/2011 00:11		4	10			350.0	SLOW RATE 10 BBLS PRIOR TO CALCULATED DISPLACEMENT
Bump Plug	11/19/2011 00:14		4		87		800.0	PLUG BUMPED
Check Floats	11/19/2011 00:16							FLOATS HOLDING. HES RETURNED 1/2 BBL H2O TO PUMP
End Job	11/19/2011 00:17							PIPE WAS STATIC DURING JOB, GOOD CIRCULATION THROUGHOUT JOB, HES RETURNED 36 BBL OF CEMENT TO SURFACE
Pre-Rig Down Safety Meeting	11/19/2011 00:25							WITH ALL HES PERSONNEL
Rig-Down Equipment	11/19/2011 00:30							
Pre-Convoy Safety Meeting	11/19/2011 01:25							WITH ALL HES PERSONNEL
Crew Leave Location	11/19/2011 01:30							
Comment	11/19/2011 01:31							THANK YOU FOR USING HALLIBURTON CEMENT DEPARTMENT. JESSE SLAUGHTER AND CREW.

WILLIAMS- RWF 321-32

9 5/8 SURFACE



Local Event Log

1	START JOB	11/18/2011 23:18:00	2	PRIME LINES	11/18/2011 23:18:10	3	TEST LINES	11/18/2011 23:20:15
4	PUMP H2O SPACER	11/18/2011 23:29:16	5	PUMP LEAD CEMENT	11/18/2011 23:37:18	6	PUMP TAIL CEMENT	11/18/2011 23:48:21
7	SHUTDOWN	11/18/2011 23:56:42	8	DROP TOP PLUG	11/18/2011 23:59:28	9	PUMP DISPLACEMENT	11/19/2011 00:01:45
10	SLOW RATE	11/19/2011 00:11:40	11	BUMP PLUG	11/19/2011 00:14:42	12	CHECK FLOATS	11/19/2011 00:16:33
13	END JOB	11/19/2011 00:17:09						

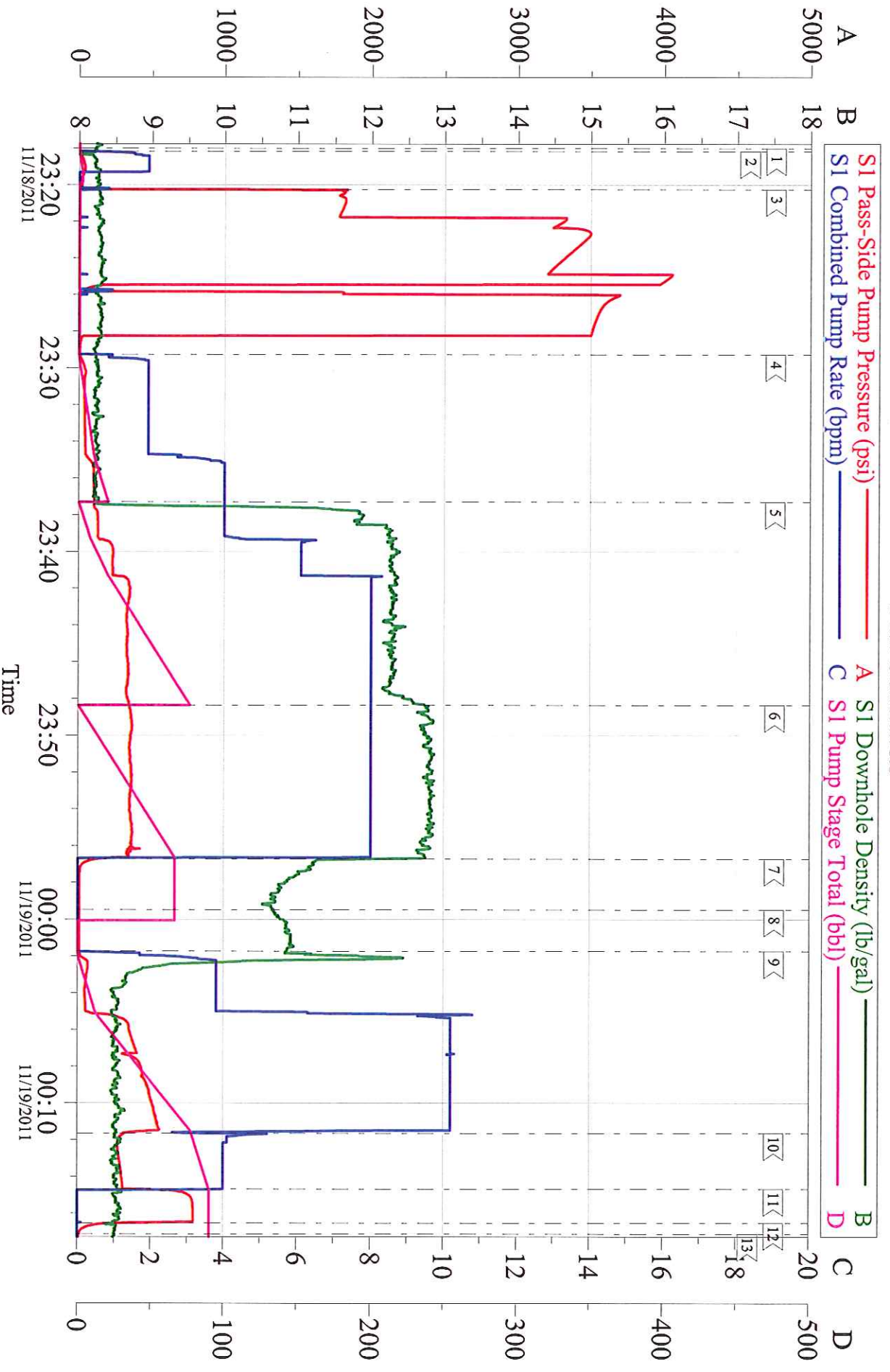
Customer: WILLIAMS
Well Description: RWF 321-32
Customer Rep: MATT HUTSON

Job Date: 18-Nov-2011
Job Type: SURFACE
Cement Supervisor: JESSE SLAUGHTER

Sales Order #: 9000033
ADC Used: YES
Elite #: JACOB DOUT

WILLIAMS- RWF 321-32

9 5/8 SURFACE



Customer: WILLIAMS
Well Description: RWF 321-32
Customer Rep: MATT HUTSON

Job Date: 18-Nov-2011
Job Type: SURFACE
Cement Supervisor: JESSE SLAUGHTER

Sales Order #: 9000033
ADC Used: YES
Elite #: JACOB DOUT

OptiCem v6.4.10
19-Nov-11 00:26