

BILL BARRETT CORP

WELD COUNTY, COLORADO

Anschutz Windmill 06-25H

Anschutz Windmill 06-25H

Wellbore #1

Plan: Design #1

Standard Planning Report

13 December, 2012



Bill Barrett Corporation

SITE DETAILS: Anschutz Windmill 06-25H
Briggsdale

Site Latitude: 40° 22' 38.381 N
Site Longitude: 104° 16' 13.030 W

COMPANY DETAILS: BILL BARRETT CORP

Calculation Method: Minimum Curvature
Error System: ISCWSA
Scan Method: Closest Approach 3D
Error Surface: Elliptical Conic
Warning Method: Error Ratio

Positional Uncertainty: 0.0
Convergence: 0.79
Local North: True

WELL DETAILS: Anschutz Windmill 06-25H

Ground Level: 4537.0
Northing: 1382676.58 Easting: 3342591.64 Latitude: 40° 22' 38.381 N Longitude: 104° 16' 13.030 W Slot

WELLBORE TARGET DETAILS (LAT/LONG)

Name	TVD	+N/-S	+E/-W	Latitude	Longitude	Shape
Anschutz Windmill 06-25H LP	6085.0	-68.8	-247.7	40° 22' 37.700 N	104° 16' 16.230 W	Point
Anschutz Windmill 06-25H PBHL	6085.0	-4188.7	-225.1	40° 21' 56.988 N	104° 16' 15.938 W	Point

SECTION DETAILS

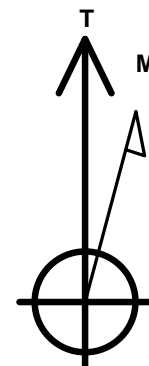
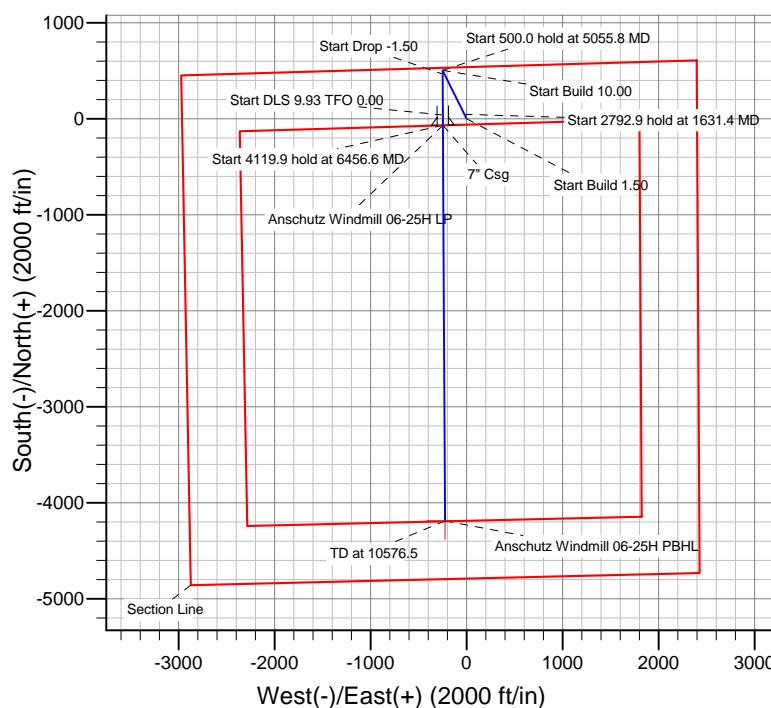
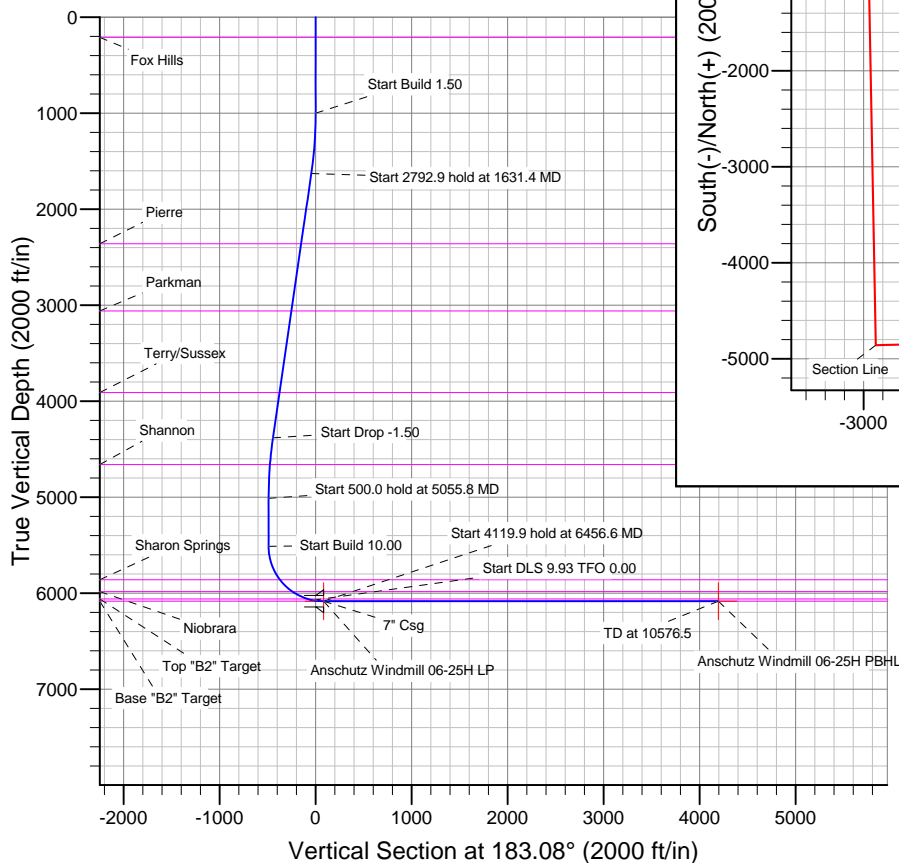
Sec	MD	Inc	Azi	TVD	+N/-S	+E/-W	DLeg	TFace	VSec	Target
1	0.0	0.00	0.00	0.0	0.0	0.0	0.00	0.00	0.0	
2	1000.0	0.00	0.00	1000.0	0.0	0.0	0.00	0.00	0.0	
3	1631.4	9.47	333.58	1628.6	46.6	-23.2	1.50	333.58	-45.3	
4	4424.4	9.47	333.58	4383.4	458.2	-227.7	0.00	0.00	-445.4	
5	5055.8	0.00	0.00	5012.0	504.9	-250.8	1.50	180.00	-490.7	
6	5555.8	0.00	0.00	5512.0	504.9	-250.8	0.00	0.00	-490.7	
7	6346.4	79.06	179.69	6074.5	40.7	-248.3	10.00	179.69	-27.3	Anschutz Windmill 06-25H LP
8	6456.6	90.00	179.69	6085.0	-68.8	-247.7	9.93	0.00	82.0	Anschutz Windmill 06-25H PBHL
9	10576.5	90.00	179.69	6085.0	-4188.7	-225.1	0.00	0.00	4194.7	

FORMATION TOP DETAILS

TVDPath	MDPath	Formation
210.0	210.0	Fox Hills
2360.0	2373.0	Pierre
3060.0	3082.7	Parkman
3910.0	3944.4	Terry/Sussex
4660.0	4703.3	Shannon
5860.0	5929.8	Sharon Springs
5985.0	6112.3	Niobrara
6060.0	6286.2	Top "B2" Target
6085.0	6453.3	Base "B2" Target

CASING DETAILS

TVD	MD	Name	Size
6085.0	6456.6	7" Csg	7



Azimuths to True North
Magnetic North: 8.39°

Magnetic Field
Strength: 53015.9snT
Dip Angle: 67.06°
Date: 12/13/2012
Model: IGRF2010

Bill Barrett Corp

Planning Report

Database:	Compass	Local Co-ordinate Reference:	Well Anschutz Windmill 06-25H
Company:	BILL BARRETT CORP	TVD Reference:	KB @ 4560.0ft (Original Well Elev)
Project:	WELD COUNTY, COLORADO	MD Reference:	KB @ 4560.0ft (Original Well Elev)
Site:	Anschutz Windmill 06-25H	North Reference:	True
Well:	Anschutz Windmill 06-25H	Survey Calculation Method:	Minimum Curvature
Wellbore:	Wellbore #1		
Design:	Design #1		

Project	WELD COUNTY, COLORADO		
Map System:	US State Plane 1983	System Datum:	Mean Sea Level
Geo Datum:	North American Datum 1983		
Map Zone:	Colorado Northern Zone		

Site		Anschutz Windmill 06-25H			
Site Position:		Northing:	1,382,676.59 ft	Latitude:	40° 22' 38.381 N
From:	Lat/Long	Easting:	3,342,591.64 ft	Longitude:	104° 16' 13.030 W
Position Uncertainty:	0.0 ft	Slot Radius:	"	Grid Convergence:	0.79 °

Well	Anschutz Windmill 06-25H					
Well Position	+N/-S	0.0 ft	Northing:	1,382,676.58 ft	Latitude:	40° 22' 38.381 N
	+E/-W	0.0 ft	Easting:	3,342,591.64 ft	Longitude:	104° 16' 13.030 W
Position Uncertainty		0.0 ft	Wellhead Elevation:	ft	Ground Level:	4,537.0 ft

Wellbore	Wellbore #1				
Magnetics	Model Name	Sample Date	Declination (°)	Dip Angle (°)	Field Strength (nT)
	IGRF2010	12/13/2012	8.39	67.06	53,016

Design	Design #1			
Audit Notes:				
Version:	Phase:	PLAN	Tie On Depth:	0.0
Vertical Section:	Depth From (TVD) (ft)	+N/-S (ft)	+E/-W (ft)	Direction (°)
	0.0	0.0	0.0	183.08

Plan Sections										
Measured Depth (ft)	Inclination (°)	Azimuth (°)	Vertical Depth (ft)	+N/-S (ft)	+E/-W (ft)	Dogleg Rate (°/100ft)	Build Rate (°/100ft)	Turn Rate (°/100ft)	TFO (°)	Target
0.0	0.00	0.00	0.0	0.0	0.0	0.00	0.00	0.00	0.00	
1,000.0	0.00	0.00	1,000.0	0.0	0.0	0.00	0.00	0.00	0.00	
1,631.4	9.47	333.58	1,628.6	46.6	-23.2	1.50	1.50	0.00	333.58	
4,424.4	9.47	333.58	4,383.4	458.2	-227.7	0.00	0.00	0.00	0.00	
5,055.8	0.00	0.00	5,012.0	504.9	-250.8	1.50	-1.50	0.00	180.00	
5,555.8	0.00	0.00	5,512.0	504.9	-250.8	0.00	0.00	0.00	0.00	
6,346.4	79.06	179.69	6,074.5	40.7	-248.3	10.00	10.00	0.00	179.69	
6,456.6	90.00	179.69	6,085.0	-68.8	-247.7	9.93	9.93	0.00	0.00	Anschutz Windmill 06
10,576.5	90.00	179.69	6,085.0	-4,188.7	-225.1	0.00	0.00	0.00	0.00	Anschutz Windmill 06

Bill Barrett Corp

Planning Report

Database:	Compass	Local Co-ordinate Reference:	Well Anschutz Windmill 06-25H
Company:	BILL BARRETT CORP	TVD Reference:	KB @ 4560.0ft (Original Well Elev)
Project:	WELD COUNTY, COLORADO	MD Reference:	KB @ 4560.0ft (Original Well Elev)
Site:	Anschutz Windmill 06-25H	North Reference:	True
Well:	Anschutz Windmill 06-25H	Survey Calculation Method:	Minimum Curvature
Wellbore:	Wellbore #1		
Design:	Design #1		

Planned Survey									
Measured Depth (ft)	Inclination (°)	Azimuth (°)	Vertical Depth (ft)	+N/-S (ft)	+E/-W (ft)	Vertical Section (ft)	Dogleg Rate (°/100ft)	Build Rate (°/100ft)	Turn Rate (°/100ft)
0.0	0.00	0.00	0.0	0.0	0.0	0.0	0.00	0.00	0.00
100.0	0.00	0.00	100.0	0.0	0.0	0.0	0.00	0.00	0.00
200.0	0.00	0.00	200.0	0.0	0.0	0.0	0.00	0.00	0.00
210.0	0.00	0.00	210.0	0.0	0.0	0.0	0.00	0.00	0.00
Fox Hills									
300.0	0.00	0.00	300.0	0.0	0.0	0.0	0.00	0.00	0.00
400.0	0.00	0.00	400.0	0.0	0.0	0.0	0.00	0.00	0.00
500.0	0.00	0.00	500.0	0.0	0.0	0.0	0.00	0.00	0.00
600.0	0.00	0.00	600.0	0.0	0.0	0.0	0.00	0.00	0.00
700.0	0.00	0.00	700.0	0.0	0.0	0.0	0.00	0.00	0.00
800.0	0.00	0.00	800.0	0.0	0.0	0.0	0.00	0.00	0.00
900.0	0.00	0.00	900.0	0.0	0.0	0.0	0.00	0.00	0.00
1,000.0	0.00	0.00	1,000.0	0.0	0.0	0.0	0.00	0.00	0.00
1,100.0	1.50	333.58	1,100.0	1.2	-0.6	-1.1	1.50	1.50	0.00
1,200.0	3.00	333.58	1,199.9	4.7	-2.3	-4.6	1.50	1.50	0.00
1,300.0	4.50	333.58	1,299.7	10.5	-5.2	-10.2	1.50	1.50	0.00
1,400.0	6.00	333.58	1,399.3	18.7	-9.3	-18.2	1.50	1.50	0.00
1,500.0	7.50	333.58	1,498.6	29.3	-14.5	-28.4	1.50	1.50	0.00
1,600.0	9.00	333.58	1,597.5	42.1	-20.9	-40.9	1.50	1.50	0.00
1,631.4	9.47	333.58	1,628.6	46.6	-23.2	-45.3	1.50	1.50	0.00
1,700.0	9.47	333.58	1,696.2	56.7	-28.2	-55.1	0.00	0.00	0.00
1,800.0	9.47	333.58	1,794.8	71.5	-35.5	-69.5	0.00	0.00	0.00
1,900.0	9.47	333.58	1,893.5	86.2	-42.8	-83.8	0.00	0.00	0.00
2,000.0	9.47	333.58	1,992.1	101.0	-50.2	-98.1	0.00	0.00	0.00
2,100.0	9.47	333.58	2,090.7	115.7	-57.5	-112.4	0.00	0.00	0.00
2,200.0	9.47	333.58	2,189.4	130.4	-64.8	-126.8	0.00	0.00	0.00
2,300.0	9.47	333.58	2,288.0	145.2	-72.1	-141.1	0.00	0.00	0.00
2,373.0	9.47	333.58	2,360.0	155.9	-77.5	-151.5	0.00	0.00	0.00
Pierre									
2,400.0	9.47	333.58	2,386.7	159.9	-79.4	-155.4	0.00	0.00	0.00
2,500.0	9.47	333.58	2,485.3	174.6	-86.8	-169.7	0.00	0.00	0.00
2,600.0	9.47	333.58	2,583.9	189.4	-94.1	-184.1	0.00	0.00	0.00
2,700.0	9.47	333.58	2,682.6	204.1	-101.4	-198.4	0.00	0.00	0.00
2,800.0	9.47	333.58	2,781.2	218.9	-108.7	-212.7	0.00	0.00	0.00
2,900.0	9.47	333.58	2,879.8	233.6	-116.0	-227.0	0.00	0.00	0.00
3,000.0	9.47	333.58	2,978.5	248.3	-123.4	-241.3	0.00	0.00	0.00
3,082.7	9.47	333.58	3,060.0	260.5	-129.4	-253.2	0.00	0.00	0.00
Parkman									
3,100.0	9.47	333.58	3,077.1	263.1	-130.7	-255.7	0.00	0.00	0.00
3,200.0	9.47	333.58	3,175.7	277.8	-138.0	-270.0	0.00	0.00	0.00
3,300.0	9.47	333.58	3,274.4	292.5	-145.3	-284.3	0.00	0.00	0.00
3,400.0	9.47	333.58	3,373.0	307.3	-152.7	-298.6	0.00	0.00	0.00
3,500.0	9.47	333.58	3,471.7	322.0	-160.0	-313.0	0.00	0.00	0.00
3,600.0	9.47	333.58	3,570.3	336.7	-167.3	-327.3	0.00	0.00	0.00
3,700.0	9.47	333.58	3,668.9	351.5	-174.6	-341.6	0.00	0.00	0.00
3,800.0	9.47	333.58	3,767.6	366.2	-181.9	-355.9	0.00	0.00	0.00
3,900.0	9.47	333.58	3,866.2	381.0	-189.3	-370.3	0.00	0.00	0.00
3,944.4	9.47	333.58	3,910.0	387.5	-192.5	-376.6	0.00	0.00	0.00
Terry/Sussex									
4,000.0	9.47	333.58	3,964.8	395.7	-196.6	-384.6	0.00	0.00	0.00
4,100.0	9.47	333.58	4,063.5	410.4	-203.9	-398.9	0.00	0.00	0.00
4,200.0	9.47	333.58	4,162.1	425.2	-211.2	-413.2	0.00	0.00	0.00
4,300.0	9.47	333.58	4,260.7	439.9	-218.5	-427.5	0.00	0.00	0.00
4,400.0	9.47	333.58	4,359.4	454.6	-225.9	-441.9	0.00	0.00	0.00

Bill Barrett Corp

Planning Report

Database:	Compass	Local Co-ordinate Reference:	Well Anschutz Windmill 06-25H
Company:	BILL BARRETT CORP	TVD Reference:	KB @ 4560.0ft (Original Well Elev)
Project:	WELD COUNTY, COLORADO	MD Reference:	KB @ 4560.0ft (Original Well Elev)
Site:	Anschutz Windmill 06-25H	North Reference:	True
Well:	Anschutz Windmill 06-25H	Survey Calculation Method:	Minimum Curvature
Wellbore:	Wellbore #1		
Design:	Design #1		

Planned Survey									
Measured Depth (ft)	Inclination (°)	Azimuth (°)	Vertical Depth (ft)	+N/-S (ft)	+E/-W (ft)	Vertical Section (ft)	Dogleg Rate (°/100ft)	Build Rate (°/100ft)	Turn Rate (°/100ft)
4,424.4	9.47	333.58	4,383.4	458.2	-227.7	-445.4	0.00	0.00	0.00
4,500.0	8.34	333.58	4,458.1	468.7	-232.9	-455.6	1.50	-1.50	0.00
4,600.0	6.84	333.58	4,557.3	480.5	-238.7	-467.0	1.50	-1.50	0.00
4,700.0	5.34	333.58	4,656.7	490.0	-243.5	-476.3	1.50	-1.50	0.00
4,703.3	5.29	333.58	4,660.0	490.3	-243.6	-476.5	1.50	-1.50	0.00
Shannon									
4,800.0	3.84	333.58	4,756.4	497.2	-247.0	-483.2	1.50	-1.50	0.00
4,900.0	2.34	333.58	4,856.2	502.0	-249.4	-487.9	1.50	-1.50	0.00
5,000.0	0.84	333.58	4,956.2	504.5	-250.6	-490.3	1.50	-1.50	0.00
5,055.8	0.00	0.00	5,012.0	504.9	-250.8	-490.7	1.50	-1.50	0.00
5,100.0	0.00	0.00	5,056.2	504.9	-250.8	-490.7	0.00	0.00	0.00
5,200.0	0.00	0.00	5,156.2	504.9	-250.8	-490.7	0.00	0.00	0.00
5,300.0	0.00	0.00	5,256.2	504.9	-250.8	-490.7	0.00	0.00	0.00
5,400.0	0.00	0.00	5,356.2	504.9	-250.8	-490.7	0.00	0.00	0.00
5,500.0	0.00	0.00	5,456.2	504.9	-250.8	-490.7	0.00	0.00	0.00
5,555.8	0.00	0.00	5,512.0	504.9	-250.8	-490.7	0.00	0.00	0.00
5,600.0	4.42	179.69	5,556.1	503.2	-250.8	-489.0	10.00	10.00	0.00
5,700.0	14.42	179.69	5,654.7	486.8	-250.7	-472.7	10.00	10.00	0.00
5,800.0	24.42	179.69	5,748.9	453.6	-250.5	-439.5	10.00	10.00	0.00
5,900.0	34.42	179.69	5,835.8	404.6	-250.3	-390.6	10.00	10.00	0.00
5,929.8	37.40	179.69	5,860.0	387.1	-250.2	-373.1	10.00	10.00	0.00
Sharon Springs									
6,000.0	44.42	179.69	5,913.0	341.1	-249.9	-327.2	10.00	10.00	0.00
6,100.0	54.42	179.69	5,978.0	265.3	-249.5	-251.5	10.00	10.00	0.00
6,112.3	55.65	179.69	5,985.0	255.2	-249.5	-241.5	10.00	10.00	0.00
Niobrara									
6,200.0	64.42	179.69	6,028.8	179.3	-249.0	-165.7	10.00	10.00	0.00
6,286.2	73.04	179.69	6,060.0	99.1	-248.6	-85.6	10.00	10.00	0.00
Top "B2" Target									
6,300.0	74.42	179.69	6,063.9	85.8	-248.5	-72.4	10.00	10.00	0.00
6,346.4	79.06	179.69	6,074.5	40.7	-248.3	-27.3	10.00	10.00	0.00
6,400.0	84.38	179.69	6,082.2	-12.4	-248.0	25.7	9.93	9.93	0.00
6,453.3	89.35	179.69	6,085.0	-65.6	-247.7	78.8	9.31	9.31	0.00
Base "B2" Target									
6,456.6	90.00	179.69	6,085.0	-68.8	-247.7	82.0	19.72	19.72	0.00
7" Csg - Anschutz Windmill 06-25H LP									
6,500.0	90.00	179.69	6,085.0	-112.3	-247.4	125.4	0.01	0.01	0.00
6,600.0	90.00	179.69	6,085.0	-212.3	-246.9	225.2	0.00	0.00	0.00
6,700.0	90.00	179.69	6,085.0	-312.3	-246.3	325.0	0.00	0.00	0.00
6,800.0	90.00	179.69	6,085.0	-412.3	-245.8	424.9	0.00	0.00	0.00
6,900.0	90.00	179.69	6,085.0	-512.3	-245.3	524.7	0.00	0.00	0.00
7,000.0	90.00	179.69	6,085.0	-612.3	-244.7	624.5	0.00	0.00	0.00
7,100.0	90.00	179.69	6,085.0	-712.3	-244.2	724.3	0.00	0.00	0.00
7,200.0	90.00	179.69	6,085.0	-812.3	-243.6	824.2	0.00	0.00	0.00
7,300.0	90.00	179.69	6,085.0	-912.3	-243.1	924.0	0.00	0.00	0.00
7,400.0	90.00	179.69	6,085.0	-1,012.3	-242.5	1,023.8	0.00	0.00	0.00
7,500.0	90.00	179.69	6,085.0	-1,112.3	-242.0	1,123.6	0.00	0.00	0.00
7,600.0	90.00	179.69	6,085.0	-1,212.3	-241.4	1,223.5	0.00	0.00	0.00
7,700.0	90.00	179.69	6,085.0	-1,312.3	-240.9	1,323.3	0.00	0.00	0.00
7,800.0	90.00	179.69	6,085.0	-1,412.2	-240.3	1,423.1	0.00	0.00	0.00
7,900.0	90.00	179.69	6,085.0	-1,512.2	-239.8	1,522.9	0.00	0.00	0.00
8,000.0	90.00	179.69	6,085.0	-1,612.2	-239.2	1,622.8	0.00	0.00	0.00
8,100.0	90.00	179.69	6,085.0	-1,712.2	-238.7	1,722.6	0.00	0.00	0.00

Bill Barrett Corp

Planning Report

Database:	Compass	Local Co-ordinate Reference:	Well Anschutz Windmill 06-25H
Company:	BILL BARRETT CORP	TVD Reference:	KB @ 4560.0ft (Original Well Elev)
Project:	WELD COUNTY, COLORADO	MD Reference:	KB @ 4560.0ft (Original Well Elev)
Site:	Anschutz Windmill 06-25H	North Reference:	True
Well:	Anschutz Windmill 06-25H	Survey Calculation Method:	Minimum Curvature
Wellbore:	Wellbore #1		
Design:	Design #1		

Planned Survey										
Measured Depth (ft)	Inclination (°)	Azimuth (°)	Vertical Depth (ft)	+N/-S (ft)	+E/-W (ft)	Vertical Section (ft)	Dogleg Rate (°/100ft)	Build Rate (°/100ft)	Turn Rate (°/100ft)	
8,200.0	90.00	179.69	6,085.0	-1,812.2	-238.1	1,822.4	0.00	0.00	0.00	
8,300.0	90.00	179.69	6,085.0	-1,912.2	-237.6	1,922.2	0.00	0.00	0.00	
8,400.0	90.00	179.69	6,085.0	-2,012.2	-237.0	2,022.1	0.00	0.00	0.00	
8,500.0	90.00	179.69	6,085.0	-2,112.2	-236.5	2,121.9	0.00	0.00	0.00	
8,600.0	90.00	179.69	6,085.0	-2,212.2	-235.9	2,221.7	0.00	0.00	0.00	
8,700.0	90.00	179.69	6,085.0	-2,312.2	-235.4	2,321.5	0.00	0.00	0.00	
8,800.0	90.00	179.69	6,085.0	-2,412.2	-234.8	2,421.4	0.00	0.00	0.00	
8,900.0	90.00	179.69	6,085.0	-2,512.2	-234.3	2,521.2	0.00	0.00	0.00	
9,000.0	90.00	179.69	6,085.0	-2,612.2	-233.8	2,621.0	0.00	0.00	0.00	
9,100.0	90.00	179.69	6,085.0	-2,712.2	-233.2	2,720.8	0.00	0.00	0.00	
9,200.0	90.00	179.69	6,085.0	-2,812.2	-232.7	2,820.7	0.00	0.00	0.00	
9,300.0	90.00	179.69	6,085.0	-2,912.2	-232.1	2,920.5	0.00	0.00	0.00	
9,400.0	90.00	179.69	6,085.0	-3,012.2	-231.6	3,020.3	0.00	0.00	0.00	
9,500.0	90.00	179.69	6,085.0	-3,112.2	-231.0	3,120.1	0.00	0.00	0.00	
9,600.0	90.00	179.69	6,085.0	-3,212.2	-230.5	3,220.0	0.00	0.00	0.00	
9,700.0	90.00	179.69	6,085.0	-3,312.2	-229.9	3,319.8	0.00	0.00	0.00	
9,800.0	90.00	179.69	6,085.0	-3,412.2	-229.4	3,419.6	0.00	0.00	0.00	
9,900.0	90.00	179.69	6,085.0	-3,512.2	-228.8	3,519.4	0.00	0.00	0.00	
10,000.0	90.00	179.69	6,085.0	-3,612.2	-228.3	3,619.3	0.00	0.00	0.00	
10,100.0	90.00	179.69	6,085.0	-3,712.2	-227.7	3,719.1	0.00	0.00	0.00	
10,200.0	90.00	179.69	6,085.0	-3,812.2	-227.2	3,818.9	0.00	0.00	0.00	
10,300.0	90.00	179.69	6,085.0	-3,912.2	-226.6	3,918.7	0.00	0.00	0.00	
10,400.0	90.00	179.69	6,085.0	-4,012.2	-226.1	4,018.6	0.00	0.00	0.00	
10,500.0	90.00	179.69	6,085.0	-4,112.2	-225.5	4,118.4	0.00	0.00	0.00	
10,576.5	90.00	179.69	6,085.0	-4,188.7	-225.1	4,194.7	0.00	0.00	0.00	
Anschutz Windmill 06-25H PBHL										

Casing Points					
Measured Depth (ft)	Vertical Depth (ft)	Name	Casing Diameter (")	Hole Diameter (")	
6,456.6	6,085.0	7" Csg	7	8-3/4	

Formations						
Measured Depth (ft)	Vertical Depth (ft)	Name	Lithology	Dip (°)	Dip Direction (°)	
210.0	210.0	Fox Hills		0.00		
2,373.0	2,360.0	Pierre		0.00		
3,082.7	3,060.0	Parkman		0.00		
3,944.4	3,910.0	Terry/Sussex		0.00		
4,703.3	4,660.0	Shannon		0.00		
5,929.8	5,860.0	Sharon Springs		0.00		
6,112.3	5,985.0	Niobrara		0.00		
6,286.2	6,060.0	Top "B2" Target		0.00		
6,453.3	6,085.0	Base "B2" Target		0.00		